

# STERN-WILLIAMS CUSTOM MOP SINK OR SHOWER FLOOR ORDER FORM

Rep Agency: \_\_\_\_\_

Date: \_\_\_\_\_

Distributor: \_\_\_\_\_

Print Name: \_\_\_\_\_

Job Name: \_\_\_\_\_

Quantity (# of total units): \_\_\_\_\_

## 1. Select the style of floor or sink by checking the associated box

(To see our different styles, refer to our website: <https://sternwilliams.com>)

### SHOWER FLOORS

- ☐ SUSSEX NEO-CORNER
- ☐ SUSSEX SQUARE/RECTANGULAR
- ☐ TRIESTE NEO-CORNER
- ☐ TRIESTE SQUARE/RECTANGULAR
- ☐ SUSSEX BACK OUTLET
- ☐ TRIESTE BACK OUTLET
- ☐ PARIAN ROLL-IN TYPE
- ☐ PARIAN RAMP TYPE
- ☐ PENTELIC ROLL-IN TYPE
- ☐ PENTELIC RAMP TYPE
- ☐ SERPENTINE ROLL-IN MODEL
- ☐ SERPENTINE WHEELCHAIR
- ☐ SERPENTINE NEO-CORNER\*
- ☐ SERPENTINE SQUARE/RECTANGULAR\*
- ☐ SERPENTINE DOUBLE DRAIN\*
- ☐ SERPENTINE BACK OUTLET DRAIN\*

### MOP SERVICE SINKS

- ☐ CRESCENT
- ☐ THE CORLOW
- ☐ CORNARO
- ☐ THE HILOW
- ☐ SERVICEPTOR SQUARE/RECTANGULAR
- ☐ MTB SQUARE/RECTANGULAR
- ☐ ELFIN NEO-CORNER
- ☐ ELFIN SQUARE/RECTANGULAR

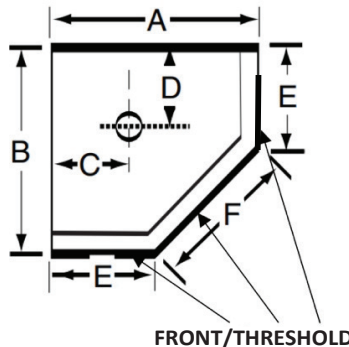
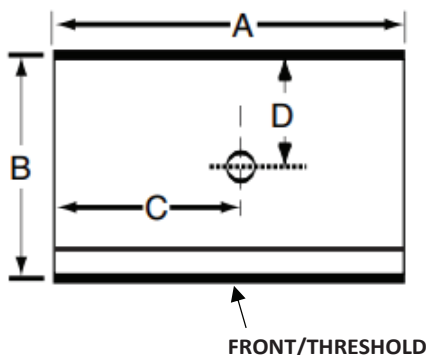
## 2. Choose the desired # of tiling flanges, stainless-steel caps, and rabbets.

Tiling Flanges: \_\_\_\_\_ (if less than 3 please mark locations below)

Stainless-steel Caps: \_\_\_\_\_ (if less than 3 please mark locations below)

\*Rabbets: Y\_\_\_\_/N\_\_\_\_ (Available only in \* styles)

## 3. Choose the desired dimensions for floor/sink dimensions and drain location.



Must have at least 6" in between any sink/floor outer edge and center of drain

A	B	C	D	E	F
64	38	12	19		

### Additional Notes:

*Note: All custom orders are final sale, non refundable or returnable.*

*Important: Custom shower floors are not ADA compliant.*