

SUBMITTAL REVIEW

Project No.:
24-050

Submittal Review No.:
SX-022

Project:
BMO University Plaza

Submittal Review Title:
HVAC

Attention:
Mauro Di Tacchio
OnSite Construction

Date:
12/11/2024

Pages
73 (incl cover)

Distribution:
Chanchal Banwait
OnSite Construction

REF. No.	Item	Status
SX-022	HVAC	Reviewed as noted

Comments:

1.0	Please refer to submittal for KMAI comments (purple).
2.0	Refer to comments by TMP mechanical consultants.
2.0	OnSite to coordinate all trades.

Issued by Kearns Mancini Architects Inc.

Joshua Asiedu, Architectural Designer
name and title of person signing



signature

12/11/2024

date



SHOP DRAWING REVIEW

200 KING ST. W., SUITE 310, TORONTO, ON CANADA M5H 3T4
E tmp@tmptoronto.com | P 416-499-8000

THE MITCHELL PARTNERSHIP INC. CONSULTING ENGINEERS			
Reviewed by:		Ryne Sternberg	
In:		Out:	29 November 2024
Reviewed:		<input type="checkbox"/>	
Reviewed With Comments:		<input checked="" type="checkbox"/>	
Not Acceptable, Resubmit		<input type="checkbox"/>	
Reviewed for General Arrangement only and subject to any revisions shown. Material, workmanship, dimensions, field clearances & design shall be in accordance with the requirements of the Contract Documents.			

PROJECT:	BMO Branch – Windsor – University Mall
PROJECT NUMBER:	24-1035-000
SHOP DRAWING NAME:	HVAC (VAV, Transfer Fans, Duct heater, Fire Damper)
SUPPLIER/MANUFACTURER:	EH Price
SUBMITTAL NO:	01

1.0 GENERAL COMMENTS:

- 1.1 Coordinate and verify with mechanical contractor.
 - .1 Duct connections, arrangements and sizes
 - .2 Unit Dimensions relative to site conditions
 - .3 Quantities
- 1.2 Coordinate and verify all finishes with architect.
- 1.3 Coordinate all electrical requirements with electrical contractor and consultant



Submittal

Submittal Number: 020

Revision Number: 00

Due Date: Nov 13, 2024

O.N. Site Construction Inc.
2861 Sherwood Heights Drive
Unit 40
Oakville, ON L6J 7K1

Job Details:

2680 Tecumseh Road West
Windsor, ON N9B 3P9
15160
M1-201

Submit To:

Joshua Asiedu
BMO

416 536 5666 x213

Project: 24/037 - BMO 2680 Tecumseh Road West - University Mall
Vendor: Con-Sult Mechanical Inc.

Reference #	Item #	Description/Manufacturer	Qty	Item Spec - Drawing Ref
	01	HVAC Shop Drawings - Consult Mechanical		M1-201

Comments:

KEARNS MANCINI ARCHITECTS INC

REVIEWED

REVIEWED AS NOTED

REVISE AND RESUBMIT

NOT REVIEWED

Date: Dec. 11, 2024

Submittal No.: SX-22 (71 pgs tot)

Reviewed by: JA

This review by KEARNS MANCINI ARCHITECTS INC is for the sole purpose of ascertaining conformance with the general design concept for architectural features only, and does not in any way constitute review of the design of engineering elements which form part of the contract documents prepared by others. This review shall not mean that KEARNS MANCINI ARCHITECTS INC approves the detailed design inherent in the shop drawings, responsibility for which shall remain with the Contractor submitting same, and such review shall not relieve the Contractor of the responsibility for meeting all requirements of the contract documents. The Contractor is responsible for the dimensions to be confirmed and correlated at the job site, for information that pertains solely to fabrication processes or to techniques of construction and installation, and for coordination of work of all trades.

THIS STAMP APPLIES TO
THIS AND FOLLOWING 70
PAGES.

GC TO COORDINATE ALL
TRADES

SITE VERIFY ALL
DIMENSIONS

O.N. Site Construction INC.

Shop Drawing Review

REVIEWED

REVIEWED AS NOTED

REVISE & RESUBMIT

REJECTED.

Nov 08, 2024

Date Reviewed:

Chanchal Banwait

Reviewed By:

This review is for the sole purpose of ascertaining conformance with the general design concept. It does not imply approval of the detail design inherent in the shop drawings, responsibility for which shall remain with this sub-contractor, nor shall such review relieve this sub-contractor of their responsibility for errors or omissions in the shop drawings or of their responsibility for meeting all requirements of the contract documents.

Responsibility for confirmation and co-relation of job site dimensions, for information pertaining solely to fabrication procedures or to techniques of construction or installation, shall remain with this contractor.



54 Audia Court, Unit 2
Concord, ON L4K 3N5
(905)-738-1400

Submittal 24-275-002

PROJECT NAME	PROJECT ADDRESS	DATE SUBMITTED
BMO 2680 TECUMSEH WINDSOR 24-275	2680 Tecumseh Rd W, Windsor, ON N9B 3P9	Nov 8, 2024

TO	FROM
Chanchal Banwait	PAUL LEDDY
COMPANY	COMPANY
O.N. SITE CONSTRUCTION INC.	Consult Mechanical Inc.
EMAIL	EMAIL
Chanchal@onsiteconstruction.ca	paul.l@consultmechanical.com
ADDRESS	ADDRESS
2861 Sherwood Heights Dr Unit 40 Oakville, ON L6J 7K1	54 Audia Court, Unit 2 Concord, ON L4K 3N5

Title

EH Price Duct Heaters

Description

Price Model DF C100H Electric Duct Heaters

Package Items

SPEC	SUBSECTION	ITEM	TYPE
M0-001Heating Coil Schedule	M0-001		Shop Drawings



E.H Price Plant
638 Raleigh Street,
Winnipeg, Manitoba, Canada, R2K 3Z9
Tel 1-204-669-4420, Fax 1-204-661-7888
Visit us at <http://www.price-hvac.com>



Duct Heater Approval Drawing

Heater(s) selected:5/5

Created 08 Nov, 2024
Last Modified 08 Nov, 2024
Project Number 243130024
Project Name TECUMSEH - CONSULT
Reference Number
Customer CONSULT MECHANICAL
Engineer
Submitted By Amanda Stennett
Company E.H. Price Toronto

Rev.0
Canada

Duct Heaters			Dimensions (in)						CFM	FPM	Electrical Data					Stages			Drawings	Thermostats
Item	Qty	Model (See Legend)	Heater			Control Box					P (kW)	VAC-Ph	I (A)	Ctrl V	Signal	Qty	kW	A		
			W	H	D	A	B	C												
1	Tag(s): VAV-1, VAV-7														MOD 0-10V	1X	1.50	4.16	M243130024-A E243130024-A	TRO5404 STC8-13
	2	DF CI00H	12.00	8.00	6.00	8.50	10.00	15.00	200	300	1.50	208-3	4.16	24						
	Elec. opts.:CA-DS-AC-MC-TR-CF-HEC-EAS-SSR-CGC-AUX(1) Mech. opts.:N1-BLE																			
2	Tag(s): VAV-3														MOD 0-10V	1X	4.00	11.10	M243130024-B E243130024-B	TRO5404 STC8-13
	1	DF CI00H	14.00	12.50	5.00	8.50	12.50	13.00	368	303	4.00	208-3	11.10	24						
	Elec. opts.:CA-DS-AC-MC-TR-CF-HEC-EAS-SSR-CGC-AUX(1) Mech. opts.:N1-BLE-VAV-BFT-BFB																			
3	Tag(s):														MOD 0-10V	1X	5.00	13.88	M243130024-B E243130024-B	TRO5404 STC8-13
	1	DF CI00H	12.00	10.00	6.00	8.50	10.00	16.00	251	302	5.00	208-3	13.88	24						
	Elec. opts.:CA-DS-AC-MC-TR-CF-HEC-EAS-SSR-CGC-AUX(1) Mech. opts.:N1-BLE-VAV-BFT-BFB																			
4	Tag(s): TF-2														MOD 0-10V	1X	10.20	28.31	M243130024-A E243130024-A	TRO5404 STC8-13
	1	DF CI00H	18.88	9.25	7.00	8.50	11.25	17.00	367	303	10.20	208-3	28.31	24						
	Elec. opts.:CA-DS-AC-MC-TR-CF-HEC-EAS-SSR-CGC-AUX(1) Mech. opts.:N1-BLE																			

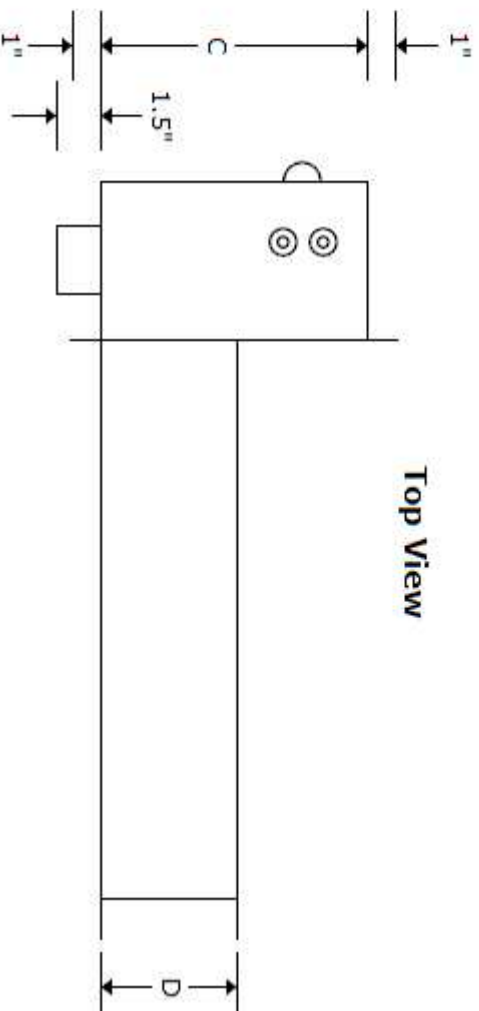
Model Legend

D	F	C	I	O	O	H	B
C	Open Coil						
T	Tubular						
F	Finned Tube						
I	Insert						
F	Flange						
O	NO Left screen						
1	Left screen						

AC	Automatic thermal cutout
AUX	Auxiliary Switch
BFB	Control box Flush Bottom
BFT	Control box Flush Top
BLE	Control box with Left ext.
CA	Magnetic contactor
CF	Control fuse
CGC	Coil Grade C (60% Nickel/16% Chrome/24% Iron)
DS	Disconnect switch
EAS	Electronic Airflow Sensors

Components & Options Legend

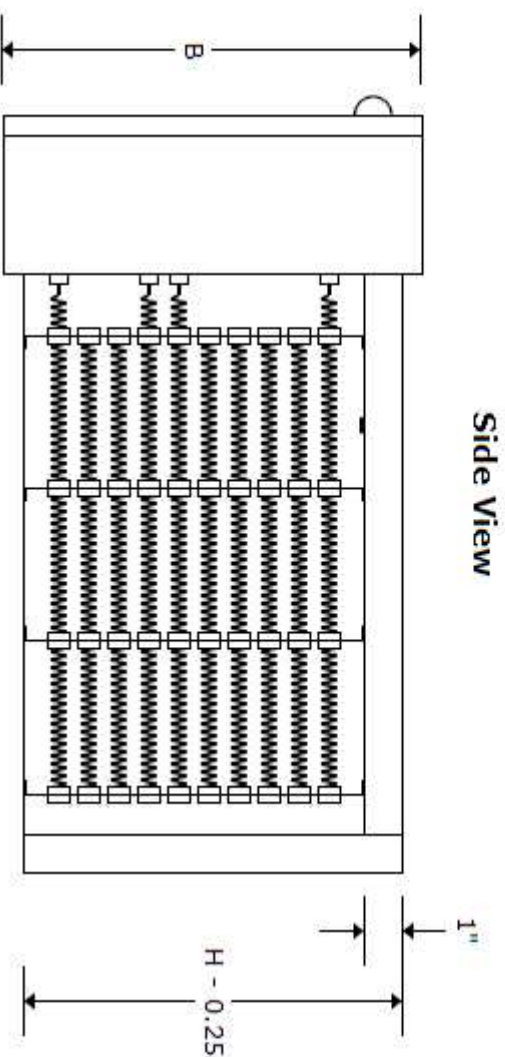
HEC	Neptronic controller
MC	Manual thermal cutout
N1	Control Panel NEMA 1
SSR	Solid-State Relay (TRIAC)
TR	Transformer
VAV	Control box adapted to VAV



Top View

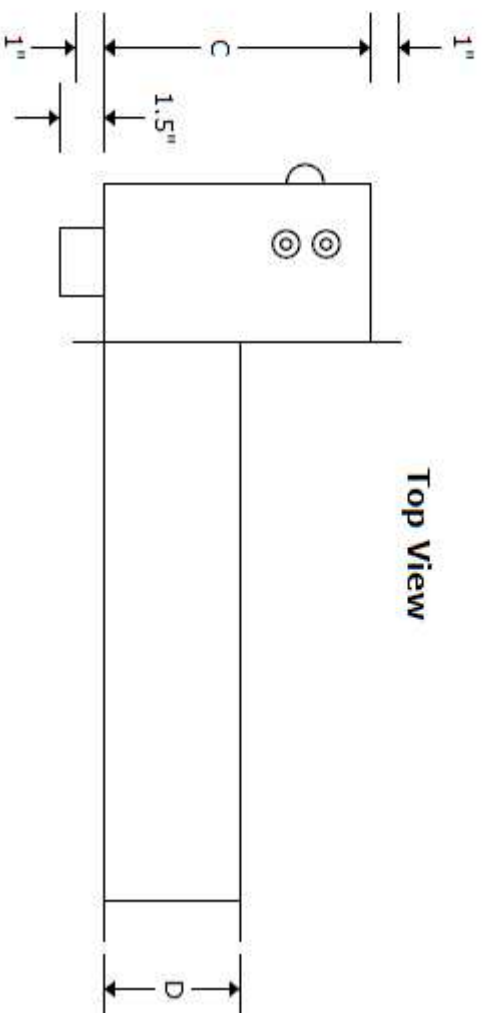
Notes

Nema 1
Horizontal Flow



Side View

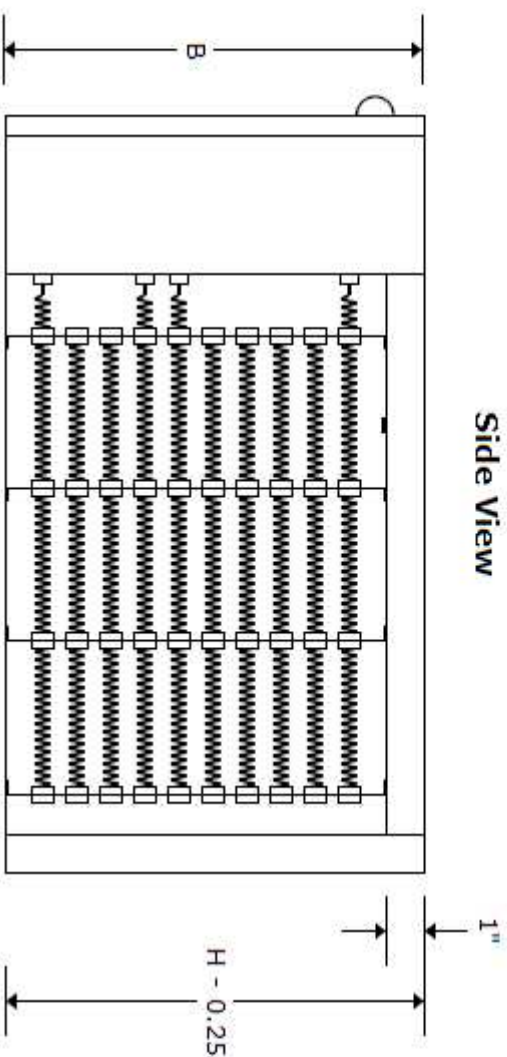




Top View

Notes

Nema 1
Horizontal Flow



Side View





54 Audia Court, Unit 2
Concord, ON L4K 3N5
(905)-738-1400

Submittal 24-275-003

PROJECT NAME	PROJECT ADDRESS	DATE SUBMITTED
BMO 2680 TECUMSEH WINDSOR 24-275	2680 Tecumseh Rd W, Windsor, ON N9B 3P9	Nov 8, 2024

TO	FROM
Chanchal Banwait	PAUL LEDDY
COMPANY	COMPANY
O.N. SITE CONSTRUCTION INC.	Consult Mechanical Inc.
EMAIL	EMAIL
Chanchal@onsiteconstruction.ca	paul.l@consultmechanical.com
ADDRESS	ADDRESS
2861 Sherwood Heights Dr Unit 40 Oakville, ON L6J 7K1	54 Audia Court, Unit 2 Concord, ON L4K 3N5

Title

EH Price Fire Dampers

Description

EH Price Model FDD-C Fire Dampers

Package Items

SPEC	SUBSECTION	ITEM	TYPE
M0-001	M0-001		Shop Drawings



Submittals

Job Name: TECUMSEH

Date Printed: 11/8/2024

Spec Section: 15 - HVAC

Contact: 571 Chrislea Rd., Unit 3
Woodbridge, ON L4L 8A2



All-In-One
Detailed Submittal Schedule

#	Qty	Model	Width, Height	Design	Mtg Pos	Fire Rating	Temp	Sleeve Length
11	1	FDD	8.00, 0.00	RC	H	1.5HR	165	0.00
RC - Round Inlet H - Horizontal 1.5HR - 1.5 Hour 165 - 165 Degrees								
12	1	FDD	6.00, 6.00	A	H	1.5HR	165	0.00
A - Blades In Airstream H - Horizontal 1.5HR - 1.5 Hour 165 - 165 Degrees								

The list provided above is for reference purpose only. Contractor to provide a full release list confirming quantity, tag, size, style, orientation of all fire dampers prior to release.

Dynamic Fire Damper, Horizontal and Vertical

Model

Dynamic Fire Damper **FDD-C**

Standard Construction:

Frame: Roll Formed Galvanized Steel with Safety Edge.

Blades: Roll Formed Galvanized Steel, Curtain-Type

Springs: Stainless Steel.

Fusible Link: U.L. Listed 165°F.

1½ & 3 Hr. Vertical:

Min. Size: 5"w x 3"h (127mm x 76mm) or 5" (127) round

Max. Single Section: 35"w x 32"h (889mm x 813mm)

Max. Size:

71"w X 32"h (1803mm x 813mm)

1½ & 3 Hr. Horizontal:

Min. Size: 5"w x 3"h (152mm x 102mm) or 5" (127) round

Max. Single Sect.: 23"w x 20"h (584mm x 508mm)

Max. Size: 35"w X 32"h (889mm x 813mm)

Optional Construction:

- ☐ For factory supplied sleeve see submittal for FDD-C c/w sleeve.
- ☐ 3 Hour Rating
- ☐ 212°F fusible link (vertical only, 23"x20" (584mm x 508mm) max size)

Notes: Dampers are furnished approximately ¼" (6mm) smaller than given duct dimensions.

UL/ULC Approved For Use in Static and Dynamic Systems.

Models:

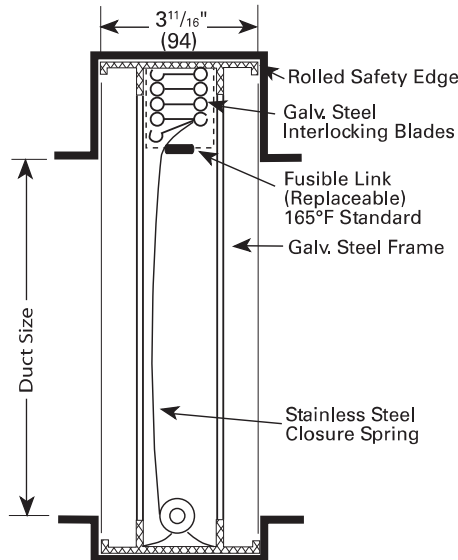
- ☐ FDD-RC - round inlet
- ☐ FDD-SRC - square/rectangular inlet
- ☐ FDD-OVC - oval inlet

Manufacturer's Recommendations

All moving parts of the damper must be inspected and cycled at intervals not greater than every six months and in accordance with the latest edition of NFPA 90A, 92A, local codes and the actuator manufacturer. In addition, fuse links shall be removed and inspected for corrosion. Dry lubricants are recommended.

Specifications are correct at time of printing. However, as part of our 'continuous improvement program,' we reserve the right to make further improvements without notice.

FDD-C-V

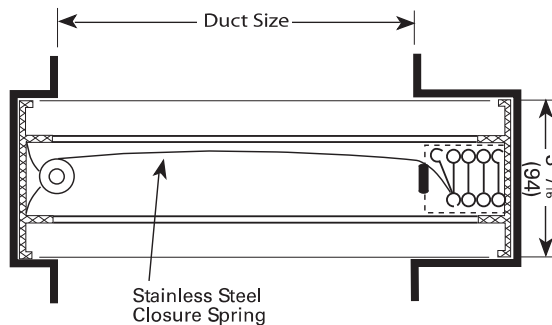


DESIGNED AND TESTED IN ACCORDANCE WITH UL-555 AND ULC-S112. MEETS ALL NFPA-90A REQUIREMENTS FOR FIRE DAMPERS.

LISTED AND LABELLED BY :



FDD-C-H



PROJECT: TECUMSEH

PRICE[®]

ENGINEER:

CUSTOMER:

Feb / 14

SUBMITTAL DATE: 11/8/2024

SPEC. SYMBOL:

245018

■ **Model FDD-C**
1½, 3 Hour Rated
"C" Style

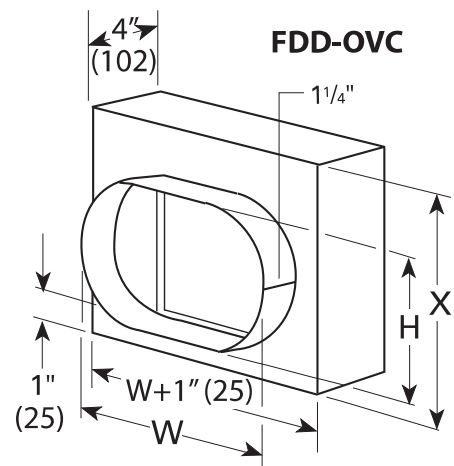
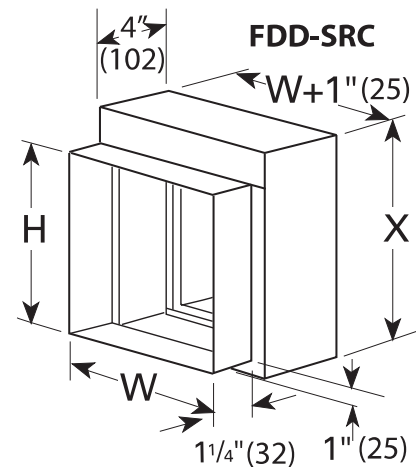
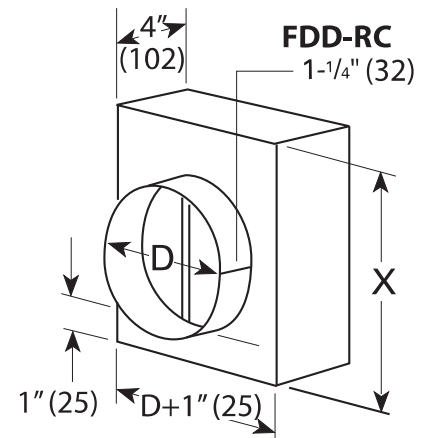
price®

Dynamic Fire Damper, Horizontal and Vertical

SIZE CHART

Duct Height	Type C Damper Height
Inches	Inches
3	6
4	7
5	8
6	9
7	10
8	11
9	12
10	13
11	14
12	15
13	16
14	17
15	18
16	19
17	20
18	21
19	22
20	23
21	25
22	26
23	27
24	28
25	29
26	30
27	31
28	32
29	33
30	34
31	35
32	36

X = DAMPER HEIGHT



W = Width (Duct)
H = Height (Duct)
X = Variable (See Size Chart)

Dynamic Fire Damper, Horizontal and Vertical

Model

Dynamic Fire Damper **FDD-A**

Standard Construction:

Frame: Roll Formed Galvanized Steel with Safety Edge.

Blades: Roll Formed Galvanized Steel, Curtain-Type

Springs: Stainless Steel.

Fusible Link: U.L. Listed 165°F.

1½ & 3 Hr. Vertical Mount:

Min. Size: 6"w x 6"h (152 mm x 152 mm)

Max. Single Section: 36"w x 36"h (914 mm x 914 mm)

Max. Size: 72"w x 36"h (1829 mm x 914 mm)

1½ & 3 Hr. Horizontal Mount:

Min. Size: 6"w x 6"h (152 mm x 152 mm)

Max. Single Section: 24"w x 24"h (610 mm x 610 mm)

Max. Size: 36"w x 36"h (914 mm x 914 mm)

Optional Construction:

- ☐ For factory supplied sleeve see submittal for FDD-A c/w sleeve
- ☐ 212°F fusible link (vertical only, 24"x24" (610mm x 610mm) max size)

Notes: Dampers are furnished approximately ¼" (6mm) smaller than given duct dimensions.

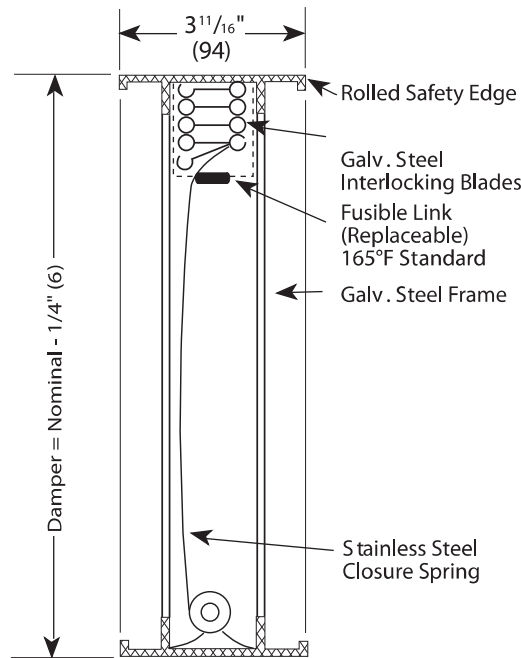
UL/ULC Approved For Use in Dynamic and Static Systems.

Manufacturer's Recommendations

All moving parts of the damper must be inspected and cycled at intervals not greater than every six months and in accordance with the latest edition of NFPA 90A, 92A, local codes and the actuator manufacturer. In addition, fuse links shall be removed and inspected for corrosion. Dry lubricants are recommended.

Specifications are correct at time of printing. However, as part of our 'continuous improvement program,' we reserve the right to make further improvements without notice.

FDD-VA

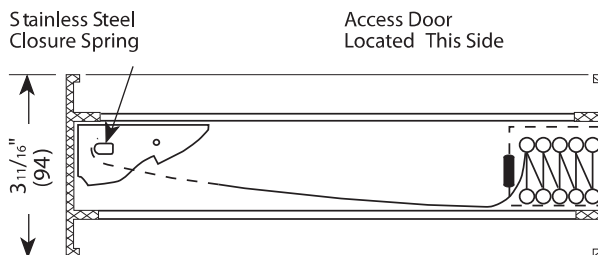


DESIGNED AND TESTED IN
ACCORDANCE WITH UL-555 AND
ULC-S112. MEETS ALL NFPA-90A
REQUIREMENTS FOR FIRE DAMPERS.

LISTED AND LABELLED BY :



FDD-HA



PROJECT: TECUMSEH

PRICE[®]

ENGINEER:

CUSTOMER:

Jul / 06

SUBMITTAL DATE: 11/8/2024

SPEC. SYMBOL:

245009



54 Audia Court, Unit 2
Concord, ON L4K 3N5
(905)-738-1400

Submittal 24-275-005

PROJECT NAME	PROJECT ADDRESS	DATE SUBMITTED
BMO 2680 TECUMSEH WINDSOR 24-275	2680 Tecumseh Rd W, Windsor, ON N9B 3P9	Nov 8, 2024

TO	FROM
Chanchal Banwait	PAUL LEDDY
COMPANY	COMPANY
O.N. SITE CONSTRUCTION INC.	Consult Mechanical Inc.
EMAIL	EMAIL
Chanchal@onsiteconstruction.ca	paul.l@consultmechanical.com
ADDRESS	ADDRESS
2861 Sherwood Heights Dr Unit 40 Oakville, ON L6J 7K1	54 Audia Court, Unit 2 Concord, ON L4K 3N5

Title

Greenheck Fans

Description

Tag TF-1 Greenheck Model SP-A250
Tag TF-2 Greenheck Model SP-A1050
Tag TF-3 Greenheck Model SP-A250
Tag EF-1 Greenheck Model GB-099-4
Tag EF-2 Greenheck Model GB-097-6

Package Items

SPEC	SUBSECTION	ITEM	TYPE
M0-001	M0-001	Fan Schedule	Shop Drawings

SUBMITTAL

Job Name: **TECUMSEH CONSULT**

Engineer: *

Elevation: (ft) 568

Date: 11/08/2024

Submitted By: Amanda Stennett

Email: astennett@ehpricesales.com

Phone: (905)660-0066

E H PRICE LIMITED

571 CHRISLEA ROAD UNIT 3

WOODBIDGE, ON L4L 8A2

CA

Phone: (905)669-8988

Fax: (905)660-9121

Email Address: astennett@ehpricesales.com



P.O. Box 410 Schofield, WI 54476 (715) 359-6171 FAX (715) 355-2399 www.greenheck.com

Model: SP-A250

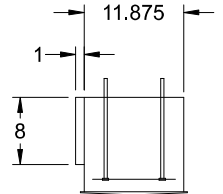
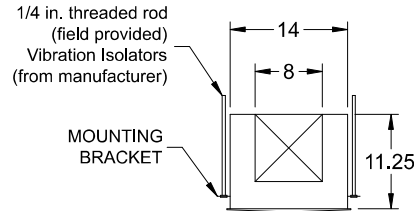
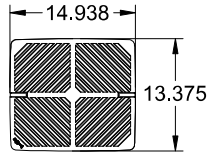
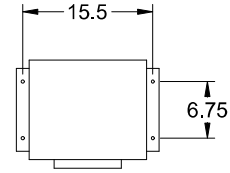
Ceiling Exhaust Fan

Standard Construction Features:

- Corrosion resistant galvanized steel scroll and housing - Sound absorbing insulation - White designer non-yellowing grille - Rectangular outlet duct collar with integral spring loaded backdraft damper - Double inlet forward curved wheel - Plug type disconnect - Adjustable mounting brackets - Field rotatable discharge

Selected Options & Accessories:

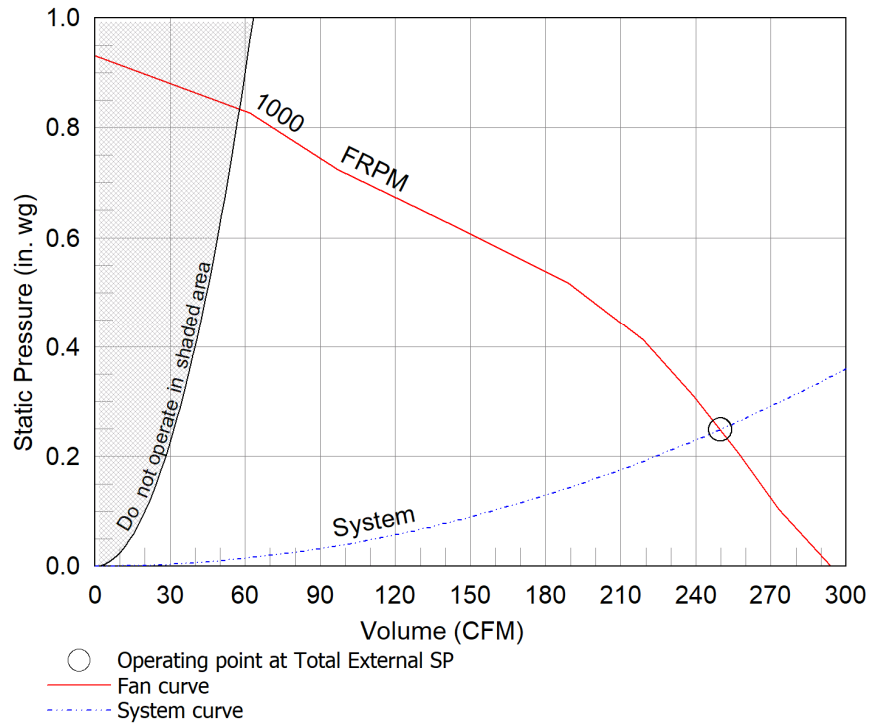
Motor rated for continuous use
Motor with Thermal Overload
Motor with CSA Approval
Motor with 40 Degree C Ambient Temperature
UL/cUL 507 Listed - Electric Fan
Solid State Speed Control, 6 Amp, Shipped Loose
Isolation Kit, (PN: VI KIT-SP/CSP), Shipped Loose
Adjustable easy installation mounting bracket
Energy Star Certified
Standard Grille
Polypropylene Wheel Material
Can Be Used to Comply with: ASHRAE 62.2, California Title 24, and Washington State Energy Code



Dimensional	
Quantity	1
Weight w/o Acc's (lb)	24
Weight w/ Acc's (lb)	26

Performance	
Requested Volume (CFM)	250
Actual Volume (CFM)	250
Total External SP (in. wg)	0.249
Fan RPM	1000
* FLA (A)	0.56
Elevation (ft)	568
Airstream Temp.(F)	70
Air Density (lb/ft3)	0.073
Sones	2.5

Motor	
Motor Mounted	Yes
** Input Watts (W)	83
Voltage/Cycle/Phase	115/60/1
Enclosure	ODP



Notes:

All dimensions shown are in units of in.
*FLA is approximate and will vary slightly with the motor.
Sones - calculated using AMCA 301 at 5 ft
** Wattage is approximate and may vary between motors.

Sound Power by Octave Band

Sound Data	62.5	125	250	500	1000	2000	4000	8000	LwA	dBA	Sones
Inlet	62	57	61	54	51	43	36	28	57	42	2.5



Model: SP-A1050

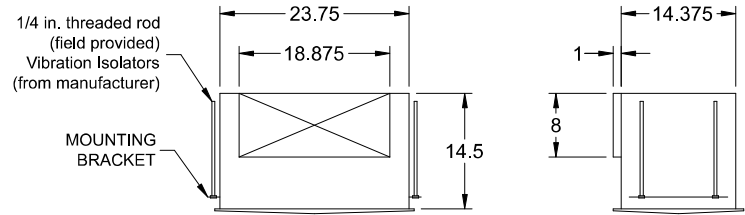
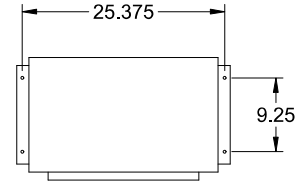
Ceiling Exhaust Fan

Standard Construction Features:

- Galvanized steel housing - Sound absorbing insulation - White coated aluminum grille - Outlet duct collar with integral spring loaded backdraft damper - Dual forward curved wheels - Plug type disconnect - Adjustable mounting brackets - Square duct connection - Dual galvanized steel scroll design - Field rotatable discharge

Selected Options & Accessories:

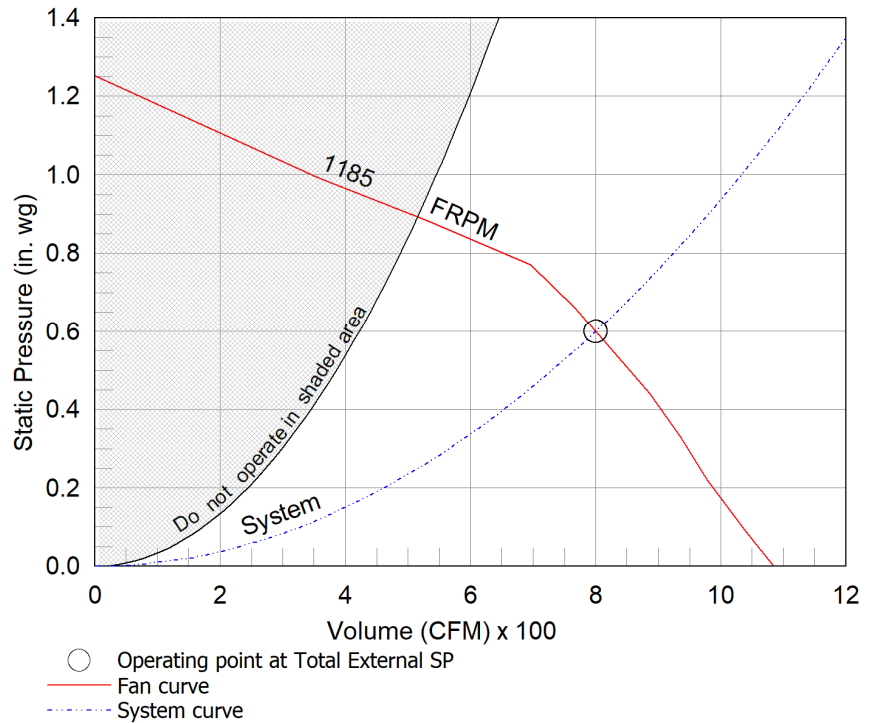
Motor rated for continuous use
Motor with Thermal Overload
Motor with CSA Approval
Motor with 40 Degree C Ambient Temperature
UL/cUL 507 Listed - Electric Fan
Solid State Speed Control, 10 Amp, Shipped Loose
Isolation Kit, (PN: VI KIT-SP/CSP), Shipped Loose
Adjustable easy installation mounting bracket
Aluminum Grille with White Enamel Finish
Polypropylene Wheel Material



Dimensional	
Quantity	1
Weight w/o Acc's (lb)	56
Weight w/ Acc's (lb)	58

Performance	
Requested Volume (CFM)	800
Actual Volume (CFM)	800
Total External SP (in. wg)	0.6
Fan RPM	1185
* FLA (A)	5.0
Elevation (ft)	568
Airstream Temp.(F)	70
Air Density (lb/ft3)	0.073
Sones	6.5

Motor	
Motor Mounted	Yes
** Input Watts (W)	438
Voltage/Cycle/Phase	115/60/1
Enclosure	ODP



Notes:

All dimensions shown are in units of in.
*FLA is approximate and will vary slightly with the motor.
Sones - calculated using AMCA 301 at 5 ft
** Wattage is shown at free air.
** Wattage is approximate and may vary between motors.

Sound Power by Octave Band

Sound Data	62.5	125	250	500	1000	2000	4000	8000	LwA	dBA	Sones
Inlet	70	70	66	65	63	59	54	47	68	53	6.5



Model: SP-A250

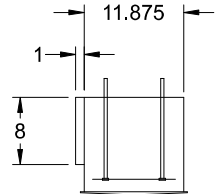
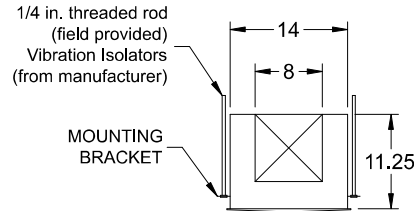
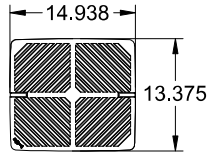
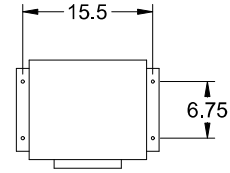
Ceiling Exhaust Fan

Standard Construction Features:

- Corrosion resistant galvanized steel scroll and housing - Sound absorbing insulation - White designer non-yellowing grille - Rectangular outlet duct collar with integral spring loaded backdraft damper - Double inlet forward curved wheel - Plug type disconnect - Adjustable mounting brackets - Field rotatable discharge

Selected Options & Accessories:

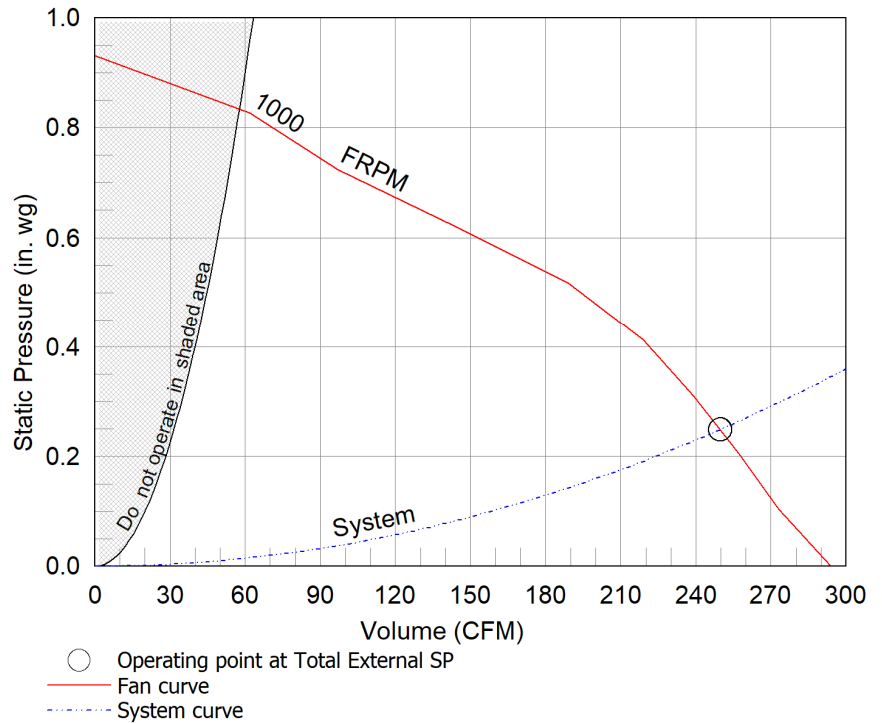
Motor rated for continuous use
Motor with Thermal Overload
Motor with CSA Approval
Motor with 40 Degree C Ambient Temperature
UL/cUL 507 Listed - Electric Fan
Solid State Speed Control, 6 Amp, Shipped Loose
Isolation Kit, (PN: VI KIT-SP/CSP), Shipped Loose
Adjustable easy installation mounting bracket
Energy Star Certified
Standard Grille
Polypropylene Wheel Material
Can Be Used to Comply with: ASHRAE 62.2, California Title 24, and Washington State Energy Code



Dimensional	
Quantity	1
Weight w/o Acc's (lb)	24
Weight w/ Acc's (lb)	26

Performance	
Requested Volume (CFM)	250
Actual Volume (CFM)	250
Total External SP (in. wg)	0.249
Fan RPM	1000
* FLA (A)	0.56
Elevation (ft)	568
Airstream Temp.(F)	70
Air Density (lb/ft3)	0.073
Sones	2.5

Motor	
Motor Mounted	Yes
** Input Watts (W)	83
Voltage/Cycle/Phase	115/60/1
Enclosure	ODP



Notes:

All dimensions shown are in units of in.
*FLA is approximate and will vary slightly with the motor.
Sones - calculated using AMCA 301 at 5 ft
** Wattage is approximate and may vary between motors.

Sound Power by Octave Band

Sound Data	62.5	125	250	500	1000	2000	4000	8000	LwA	dBA	Sones
Inlet	62	57	61	54	51	43	36	28	57	42	2.5



Model: GB-099-4

Belt Drive Centrifugal Roof Exhaust Fan

Dimensional	
Quantity	1
Weight w/o Acc's (lb)	53
Weight w/ Acc's (lb)	60
Weight w/ Acc's and Curb (lb)	88
Max T Motor Frame Size	56
Standard Curb Cap Size (in.)	19 x 19
Optional Damper (in.)	12 x 12
Roof Opening (in.)	15.5 x 15.5

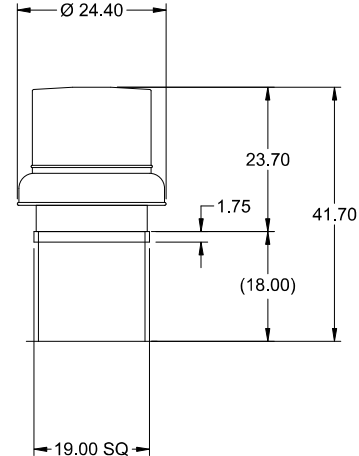
Performance	
Requested Volume (CFM)	400
Actual Volume (CFM)	400
Total External SP (in. wg)	0.5
Fan RPM	1124
Operating Power (hp)	0.09
Elevation (ft)	568
Airstream Temp.(F)	70
Air Density (lb/ft3)	0.073
Drive Loss (%)	26.3
Tip Speed (ft/min)	3,292
Static Eff. (%)	48

Misc Fan Data	
Fan Energy Index (FEI)	-
Outlet Velocity (ft/min)	417

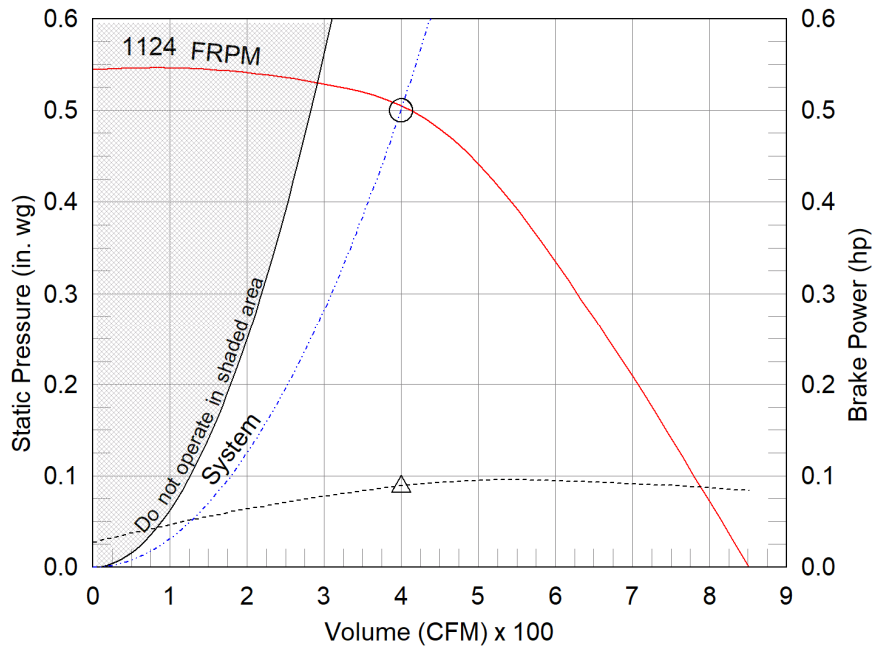
Motor	
Motor Included	Yes
Size (hp)	1/4
Voltage/Cycle/Phase	115/60/1
Enclosure	ODP
Motor RPM	1725
Efficiency Rating	Standard
Windings	1
NEC FLA* (Amps)	5.8
Min. Circuit Ampacity (MCA)	7.25
Max. Overcurrent Protection (MOP)	15
Short Circuit Current Rtg (SCCR)	5 kA

Sound Power by Octave Band

Sound Data	62.5	125	250	500	1000	2000	4000	8000	LwA	dBA	Sones
Inlet	70	69	68	61	55	54	48	43	64	53	6.6



OVERALL HEIGHT MAY BE GREATER DEPENDING ON MOTOR, ADAPTER, AND/OR HINGE BASE.



- △ Operating Bhp point
- Operating point at Total External SP
- Fan curve
- - - System curve
- - - Brake horsepower curve

Notes:

All dimensions shown are in units of in.
*NEC FLA, MCA and MOP are for reference only – based on tables 430.248 or 430.25 of National Electric Code 2020. Actual motor FLA may vary, for sizing thermal overload, consult factory. MCA and MOP values shown only account for the motor, not accessories (damper actuator, field supplied VFD, etc).
LwA - A weighted sound power level, based on ANSI S1.4 dBA - A weighted sound pressure level, based on 11.5 dB attenuation per Octave band at 5 ft - dBA levels are not licensed by AMCA International
Sones - calculated using ANSI/AMCA 301 at 5 ft



Model: GB-099-4

Belt Drive Centrifugal Roof Exhaust Fan

Standard Construction Features:

- Aluminum housing - Backward inclined aluminum wheel - Curb cap with prepunched mounting holes - Motor and drives isolated on shock mounts - Birdscreen - Ball bearing motors - Adjustable motor pulley - Adjustable motor plate - Fan shaft mounted in ball bearing pillow blocks - Bearings meet or exceed temperature rating of fan - Static resistant belts - Corrosion resistant fasteners - Sizes 141 and larger have internal lifting lugs.

Selected Options & Accessories:

Motor with CSA Approval
Standard Curb Cap Size - 19 Square
UL/cUL 705 Listed - "Power Ventilators"
Switch, NEMA-1, Toggle,
Junction Box Mounted & Wired in weather-protected motor compartment
Foam Curb Seal (Factory Applied)
Birdscreen: Galvanized, nom. 84% Free Area
Conduit Chase Qty 1
Unit Warranty: 1 Yr (Standard)
Damper Shipped Loose, BD-100-PB-12X12, Gravity Operated, Not Coated,
Nominal Size

Selected Sub Marks

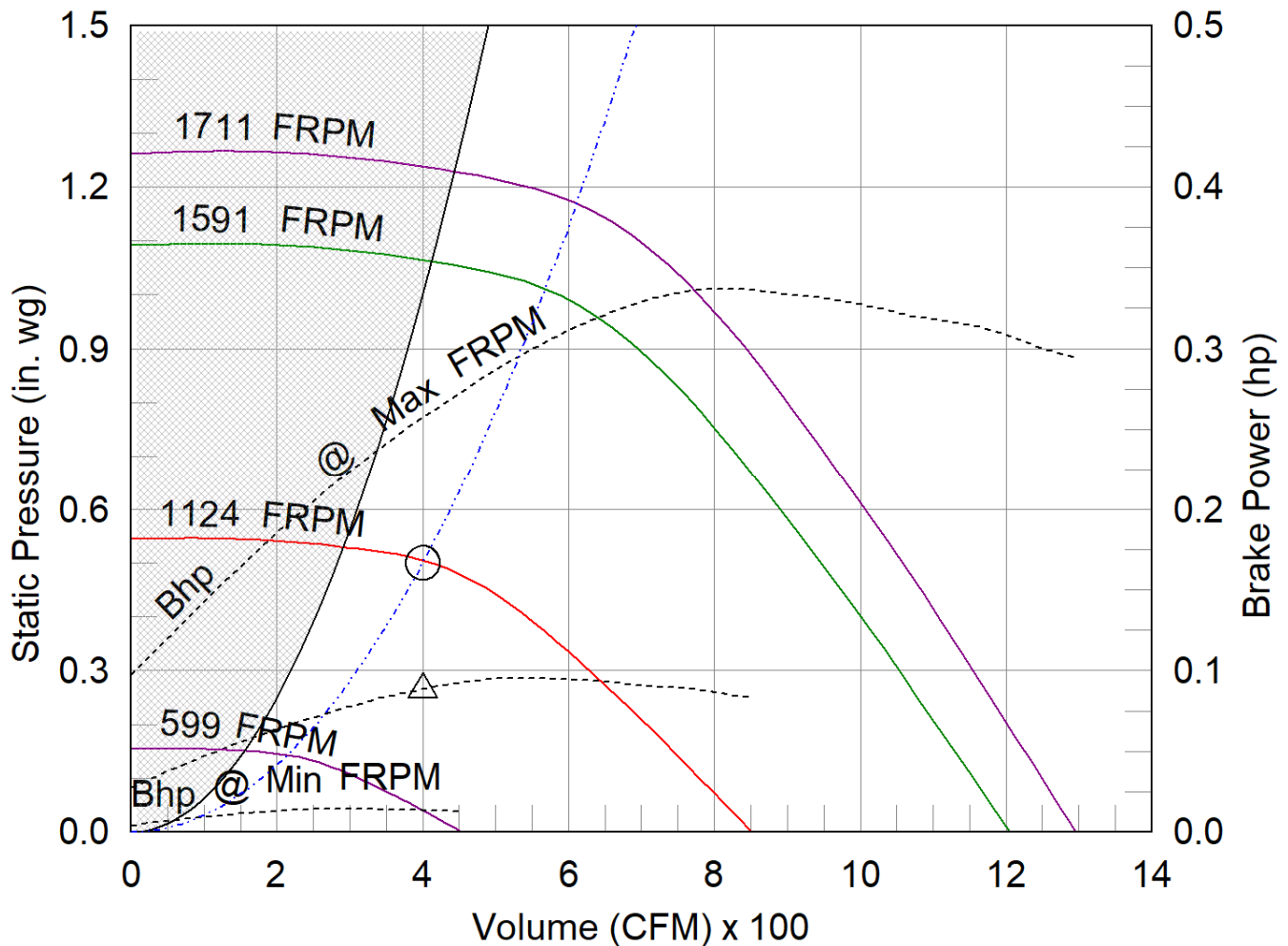
See individual submittals for full details
GPI-19-G18

GB-099-4

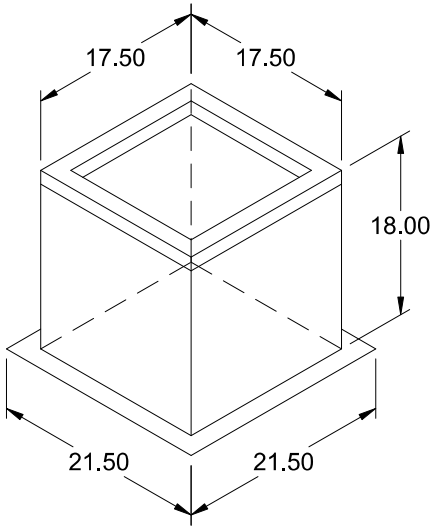
Min/Max Fan Curve

Performance

Requested Volume (CFM)	Actual Volume (CFM)	Total External SP (in. wg)	Fan RPM	Operating Power (hp)
400	400	0.5	1124	0.09



- △ Operating Bhp point
- Operating point at Total External SP
- Construction Limit
- Motor/System Limit
- Fan curve
- Min FRPM
- System curve
- Brake horsepower curve



Model: GPI

Roof Curb

Standard Construction Features:

- Roof Curb fits between the building roof and the fan mounted directly to the roof support structure - Constructed of either 18 ga galvanized steel or 0.064 in. aluminum - Straight Sided without a cant - 2 in. mounting flange - 3 lb density insulation - Height - Available from 12 in. to 42 in. as specified in 0.5 in. increments. Notes: - The maximum roof opening dimension should not be greater than the "Actual" top outside dimension minus 2 in.. - The minimum roof opening dimension should be at least 2.5 in. more than the damper dimension or recommended duct size. - The Roof Opening Dimension may or may not be the same as the Structural Opening Dimension. - Damper Tray is optional and must be specified. Tray size is same as damper size. - Security bars are optional and must be specified. Frames and gridwork are all 12 ga steel.

General

Tag	Qty	Model	Sizing Method	Undersizing (in.)	Weight (lb)	Shipped Assembled	Union Label
	1	GPI-19	Nominal	1.5	27	Yes	No Preference

Dimensions

Curb Height (in.)	Nominal Outside Width (in.)	Nominal Outside Length (in.)	Actual Outside Width (in.)	Actual Outside Length (in.)	Actual Inside Width (in.)	Actual Inside Length (in.)	Hinge Base Width* (in.)	Hinge Base Length* (in.)
18	19	19	17.5	17.5	14	14	18	18

*May not be applicable

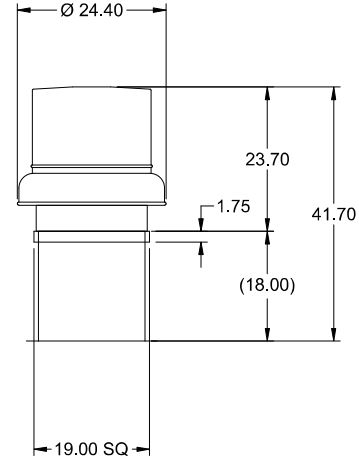
Accessories

Material	Security Bars	Liner	Insulation (in.)	Insulation R Value
Galvanized	No	No	1	R4.3

Model: GB-097-6

Belt Drive Centrifugal Roof Exhaust Fan

Dimensional	
Quantity	1
Weight w/o Acc's (lb)	52
Weight w/ Acc's (lb)	59
Weight w/ Acc's and Curb (lb)	87
Max T Motor Frame Size	56
Standard Curb Cap Size (in.)	19 x 19
Optional Damper (in.)	12 x 12
Roof Opening (in.)	15.5 x 15.5

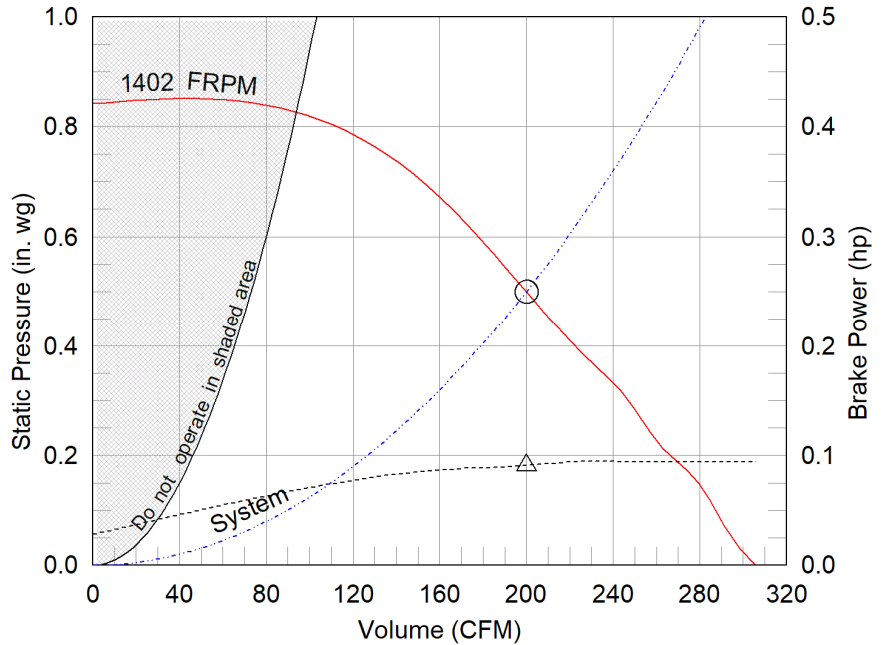


Performance	
Requested Volume (CFM)	200
Actual Volume (CFM)	200
Total External SP (in. wg)	0.5
Fan RPM	1402
Operating Power (hp)	0.09
Elevation (ft)	568
Airstream Temp.(F)	70
Air Density (lb/ft3)	0.073
Drive Loss (%)	25.6
Tip Speed (ft/min)	4,108
Static Eff. (%)	23

Misc Fan Data	
Fan Energy Index (FEI)	-
Outlet Velocity (ft/min)	208

Motor	
Motor Included	Yes
Size (hp)	1/6
Voltage/Cycle/Phase	115/60/1
Enclosure	ODP
Motor RPM	1725
Efficiency Rating	Standard
Windings	1
NEC FLA* (Amps)	4.4
Min. Circuit Ampacity (MCA)	5.5
Max. Overcurrent Protection (MOP)	15
Short Circuit Current Rtg (SCCR)	5 kA

OVERALL HEIGHT MAY BE GREATER DEPENDING ON MOTOR, ADAPTER, AND/OR HINGE BASE.



- △ Operating Bhp point
- Operating point at Total External SP
- Fan curve
- - - System curve
- ... Brake horsepower curve

Notes:

All dimensions shown are in units of in.
*NEC FLA, MCA and MOP are for reference only – based on tables 430.248 or 430.25 of National Electric Code 2020. Actual motor FLA may vary, for sizing thermal overload, consult factory. MCA and MOP values shown only account for the motor, not accessories (damper actuator, field supplied VFD, etc).
LwA - A weighted sound power level, based on ANSI S1.4 dBA - A weighted sound pressure level, based on 11.5 dB attenuation per Octave band at 5 ft - dBA levels are not licensed by AMCA International
Sones - calculated using ANSI/AMCA 301 at 5 ft

Sound Power by Octave Band

Sound Data	62.5	125	250	500	1000	2000	4000	8000	LwA	dBA	Sones
Inlet	73	71	71	60	57	49	46	41	65	54	7.0



Model: GB-097-6

Belt Drive Centrifugal Roof Exhaust Fan

Standard Construction Features:

- Aluminum housing - Backward inclined aluminum wheel - Curb cap with prepunched mounting holes - Motor and drives isolated on shock mounts - Birdscreen - Ball bearing motors - Adjustable motor pulley - Adjustable motor plate - Fan shaft mounted in ball bearing pillow blocks - Bearings meet or exceed temperature rating of fan - Static resistant belts - Corrosion resistant fasteners - Sizes 141 and larger have internal lifting lugs.

Selected Options & Accessories:

Motor with CSA Approval
Standard Curb Cap Size - 19 Square
UL/cUL 705 Listed - "Power Ventilators"
Switch, NEMA-1, Toggle,
Junction Box Mounted & Wired in weather-protected motor compartment
Foam Curb Seal (Factory Applied)
Birdscreen: Galvanized, nom. 84% Free Area
Conduit Chase Qty 1
Unit Warranty: 1 Yr (Standard)
Damper Shipped Loose, BD-100-PB-12X12, Gravity Operated, Not Coated,
Nominal Size

Selected Sub Marks

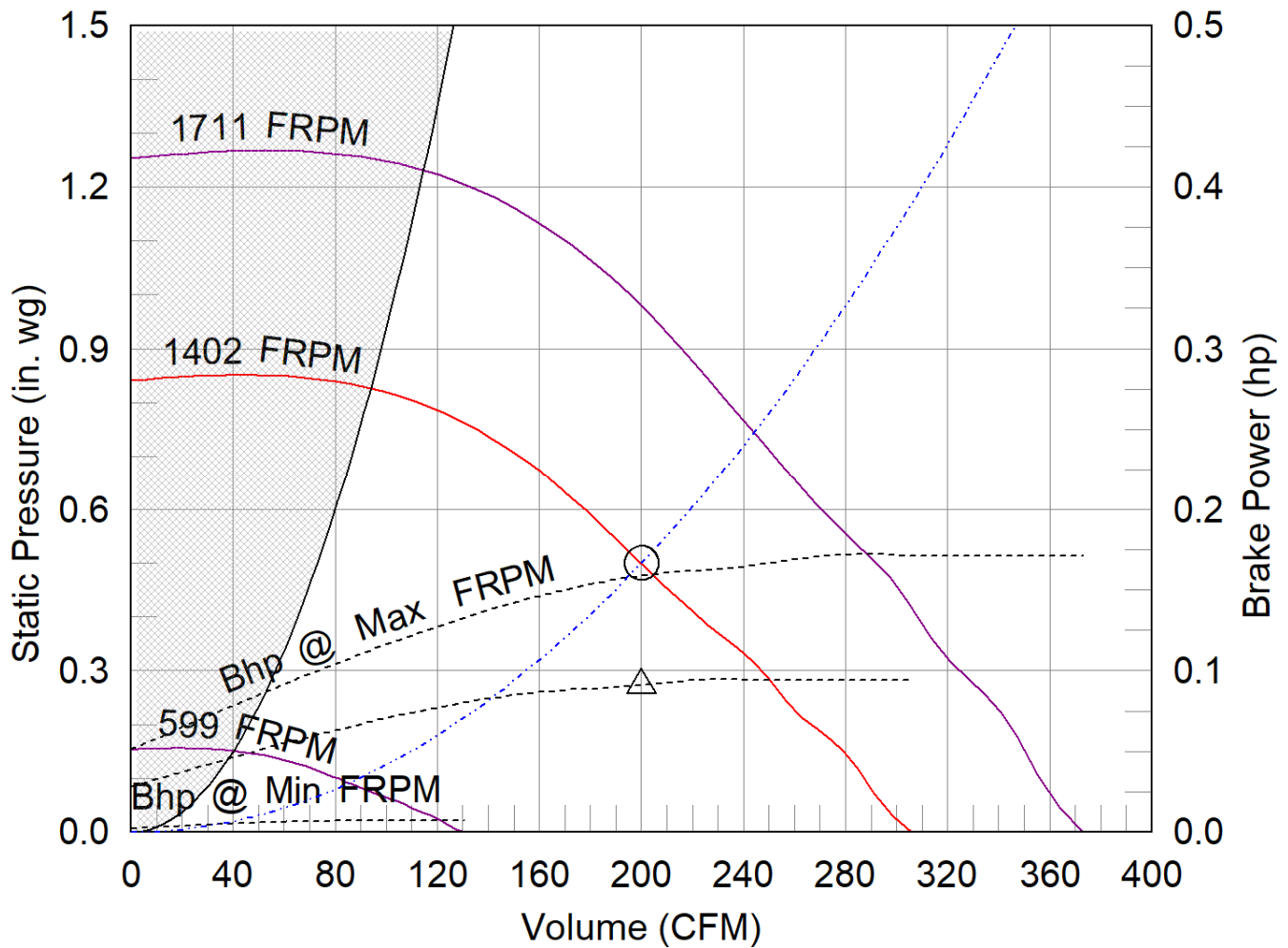
See individual submittals for full details
GPI-19-G18

GB-097-6

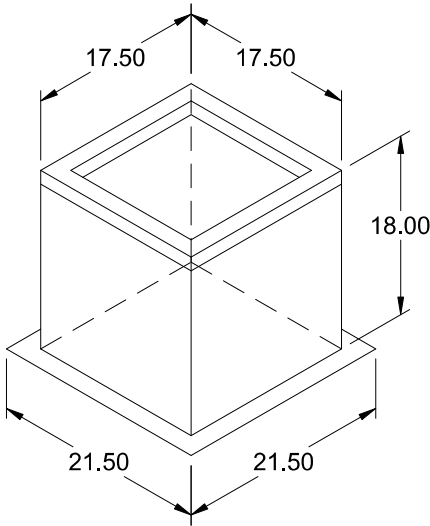
Min/Max Fan Curve

Performance

Requested Volume (CFM)	Actual Volume (CFM)	Total External SP (in. wg)	Fan RPM	Operating Power (hp)
200	200	0.5	1402	0.09



- △ Operating Bhp point
- Operating point at Total External SP
- Construction Limit
- Fan curve
- Min FRPM
- System curve
- Brake horsepower curve



Model: GPI

Roof Curb

Standard Construction Features:

- Roof Curb fits between the building roof and the fan mounted directly to the roof support structure - Constructed of either 18 ga galvanized steel or 0.064 in. aluminum - Straight Sided without a cant - 2 in. mounting flange - 3 lb density insulation - Height - Available from 12 in. to 42 in. as specified in 0.5 in. increments. Notes: - The maximum roof opening dimension should not be greater than the "Actual" top outside dimension minus 2 in.. - The minimum roof opening dimension should be at least 2.5 in. more than the damper dimension or recommended duct size. - The Roof Opening Dimension may or may not be the same as the Structural Opening Dimension. - Damper Tray is optional and must be specified. Tray size is same as damper size. - Security bars are optional and must be specified. Frames and gridwork are all 12 ga steel.

General

Tag	Qty	Model	Sizing Method	Undersizing (in.)	Weight (lb)	Shipped Assembled	Union Label
	1	GPI-19	Nominal	1.5	27	Yes	No Preference

Dimensions

Curb Height (in.)	Nominal Outside Width (in.)	Nominal Outside Length (in.)	Actual Outside Width (in.)	Actual Outside Length (in.)	Actual Inside Width (in.)	Actual Inside Length (in.)	Hinge Base Width* (in.)	Hinge Base Length* (in.)
18	19	19	17.5	17.5	14	14	18	18

*May not be applicable

Accessories

Material	Security Bars	Liner	Insulation (in.)	Insulation R Value
Galvanized	No	No	1	R4.3



54 Audia Court, Unit 2
Concord, ON L4K 3N5
(905)-738-1400

Submittal 24-275-006

PROJECT NAME	PROJECT ADDRESS	DATE SUBMITTED
BMO 2680 TECUMSEH WINDSOR 24-275	2680 Tecumseh Rd W, Windsor, ON N9B 3P9	Nov 8, 2024

TO	FROM
Chanchal Banwait	PAUL LEDDY
COMPANY	COMPANY
O.N. SITE CONSTRUCTION INC.	Consult Mechanical Inc.
EMAIL	EMAIL
Chanchal@onsiteconstruction.ca	paul.l@consultmechanical.com
ADDRESS	ADDRESS
2861 Sherwood Heights Dr Unit 40 Oakville, ON L6J 7K1	54 Audia Court, Unit 2 Concord, ON L4K 3N5

Title

EH Price Grilles Registers and Diffusers

Description

Tag Type A EH Price Model SPD
Tag Type A1 EH Price Model SPD
Tag Type B EH Price Model 80
Tag Type C EH Price Model RCD
Tag Type D EH Price Model LPD

Package Items

SPEC	SUBSECTION	ITEM	TYPE
M0-001	M0-001	Air Terminal Schedule	Shop Drawings



Grilles/Registers/Diffusers Submittals

Job Name: TECUMSEH

Date Printed: 11/8/2024

Spec Section: 15 - HVAC

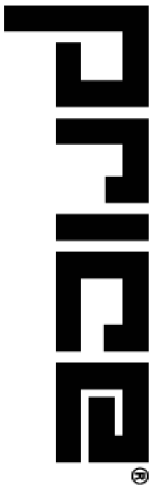
Contact: 571 Chrislea Rd., Unit 3
Woodbridge, ON L4L 8A2



All-In-One
Detailed Submittal Schedule
Grilles/Registers/Diffusers

#	Qty	Model	Tag	Unit Sz.	Inlet Sz.	Border	Pattern	Face Sz.	Damper	Accessories
4	20	80	B	23.000, 11.000		NF				LI
NF - 3/4" (19) Narrow Flat Frame LI - T-Bar Lay-In										
1	18	SPD	A	8	8	3P		24, 24		
3P - T-Bar Panel Lay-In for 15/16" Flat Tee										
2	9	SPD	A	6	6	3P		24, 24		
3P - T-Bar Panel Lay-In for 15/16" Flat Tee										
3	1	SPD	A1	6	6	3P		12, 12		
3P - T-Bar Panel Lay-In for 15/16" Flat Tee										
5	2	80	B	8.000, 8.000		F				SW
F - 1 1/4" (32) Flat Frame SW - Sidewall Application										
6	4	80	B	6.000, 6.000		F				SW
F - 1 1/4" (32) Flat Frame SW - Sidewall Application										
7	6	80	B	10.000, 10.000		F				SW
F - 1 1/4" (32) Flat Frame SW - Sidewall Application										
8	1	80	B	12.000, 12.000		F				SW
F - 1 1/4" (32) Flat Frame SW - Sidewall Application										
9	1	RCD	C	12	12				8	
8 - Full Flow Damper Duct Mounted Sizes 6-15										
10	2	LBP	D	72.000, 4.000		1000	15A			
1000 - 1" Border 15A - 0 degree deflection - 1/4" on center spacing										

The list provided above is for reference purpose only. Contractor to review all items,...make any notes and / or changes to this list and e-mail it back to me when ready to release. Once I receive this list back from you,...I will release into production EXACTLY as detailed and in IMPERIAL unless you note otherwise.

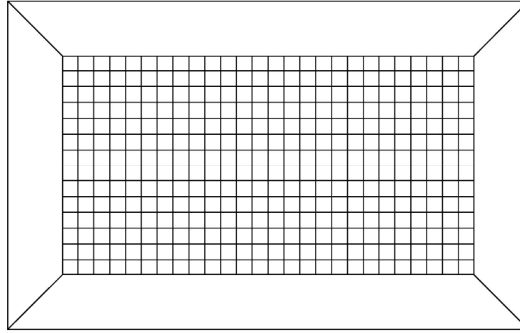


Performance Notes

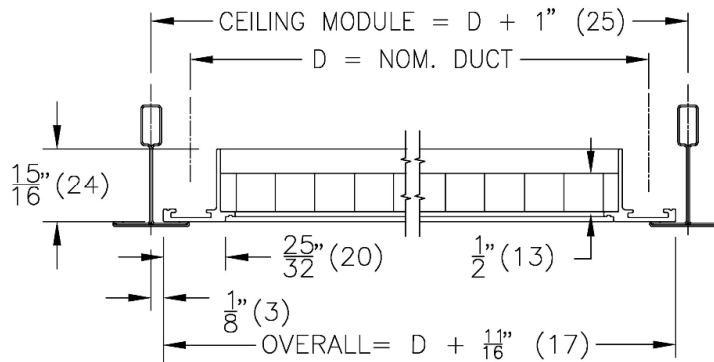
Date Printed: 11/8/2024

1. Tested in accordance with ASHRAE Standard 70-2006 "Method of Testing for Rating the Performance of Air Outlets and Inlets".
2. Throw data is based on the temperature differential (Dt), in degrees Fahrenheit ($^{\circ}F$), between supply air temperature and room temperature.
3. Throw values, in feet (ft), are provided at terminal air velocities of 150 fpm, 100 fpm, and 50 fpm for supply applications.
4. The NC, sound pressure level, is based on a room absorption of 10dB re 10^{-12} Watts in each octave band.
5. Blanks (--) indicate an NC level below 15.
6. Air flow is in cubic feet per minute (cfm).
7. Static pressure (Ps), velocity pressure (Pv), and total pressure (Pt) are in inches of water (in. w.g.).

80 Egg Crate Grille – 1/2" x 1/2" x 1/2" Core



Border: NF
3/4" (19) Narrow Flat Frame



Material:

- Grille - Aluminum construction

Finish:

- B12 - Standard White

Notes:

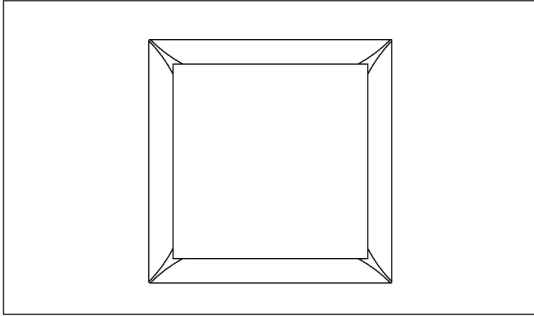
- 1/2" x 1/2" x 1/2" aluminum grid core
- Maximum duct size without mullion = 48" x 24" (1219mm x 610mm)
- Maximum duct size with mullion = 96" x 48" (2438mm x 1219mm)
- Units with mullion supplied in one-piece frame construction
- Units over 96" x 48" (2438mm x 1219mm) supplied in sections c/w Duct Mounting Channel
- NF frame minimum duct size = 6" x 3" (152mm x 76mm)
- Factory tolerance $\pm 1/32"$ (1mm)

PROJECT: TECUMSEH
ENGINEER:
DESCRIPTION: Egg Crate Grille, 1/2" X 1/2" X 1/2"
80//I23.000/11.000//LI/NF/////24/12//O/////B12

SUBMITTAL NO: 259683-E
CUSTOMER:

SUBMITTAL DATE: 11/8/2024

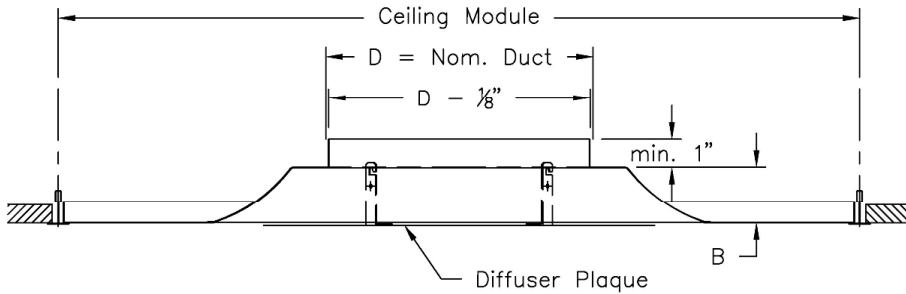
SPD Square Plaque Diffuser



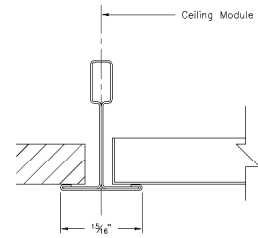
Duct Diameter: 8"
Backpan Height (B): 2 1/2"
Ceiling Module: 48" x 24"
Diffuser Face Size: 24" x 24"

Border: 3P

T-Bar Panel Lay-In for 15/16" Flat Tee



Frame Detail:



Notes:

- 360° radial horizontal air pattern
- Removable face panel
- Integral hanger loops
- Factory tolerance +/- 1/32"

Material:

- Diffuser: Steel

Finish:

- B12 - Standard White



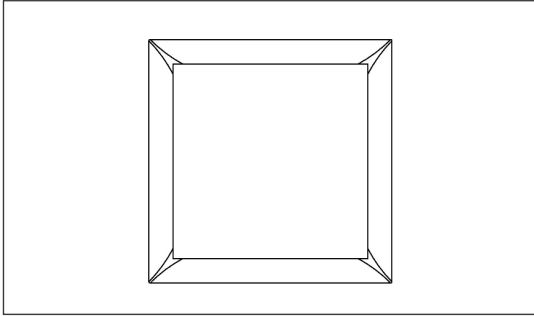
Scan for link to additional product information

PROJECT: TECUMSEH
ENGINEER:
DESCRIPTION: Square Plaque Diffuser
SPD-1-2//1/8//24/24/3P/48x24/////B12

SUBMITTAL NO: 258503-F
CUSTOMER:

SUBMITTAL DATE: 11/8/2024

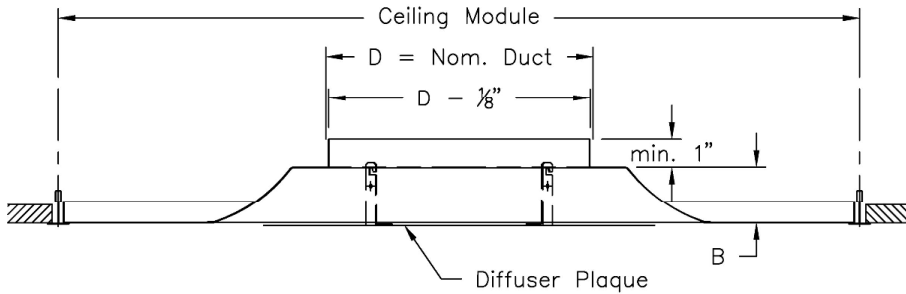
SPD Square Plaque Diffuser



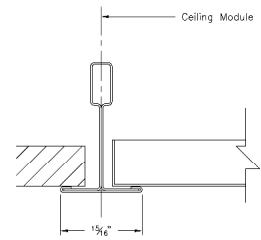
Duct Diameter: 6"
Backpan Height (B): 2 1/2"
Ceiling Module: 48" x 24"
Diffuser Face Size: 24" x 24"

Border: 3P

T-Bar Panel Lay-In for 15/16" Flat Tee



Frame Detail:



Notes:

- 360° radial horizontal air pattern
- Removable face panel
- Integral hanger loops
- Factory tolerance +/- 1/32"



Scan for link to additional product information

Material:

- Diffuser: Steel

Finish:

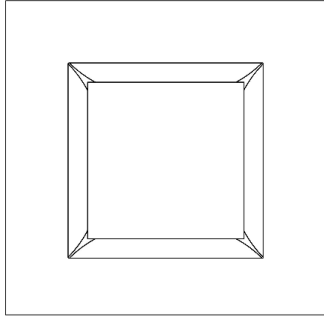
- B12 - Standard White

PROJECT: TECUMSEH
ENGINEER:
DESCRIPTION: Square Plaque Diffuser
SPD-1-2//1/6//24/24/3P/48x24/////B12

SUBMITTAL NO: 258503-F
CUSTOMER:

SUBMITTAL DATE: 11/8/2024

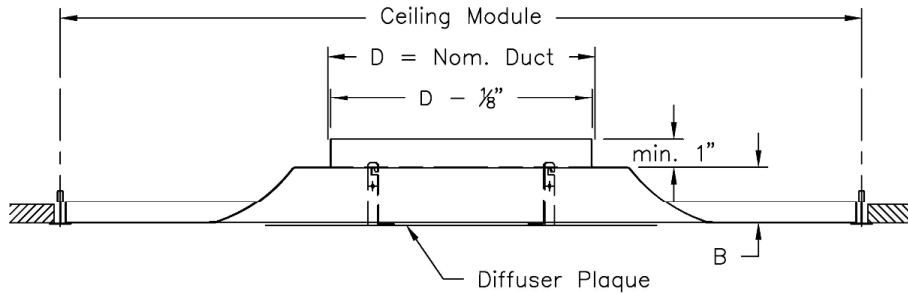
SPD Square Plaque Diffuser



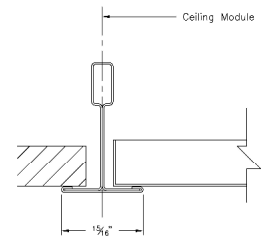
Duct Diameter: 6"
Backpan Height (B): 1 1/8"
Ceiling Module: 24" x 24"
Diffuser Face Size: 12" x 12"

Border: 3P

T-Bar Panel Lay-In for 15/16" Flat Tee



Frame Detail:



Notes:

- 360° radial horizontal air pattern
- Removable face panel
- Integral hanger loops
- Factory tolerance +/- 1/32"

Material:

- Diffuser: Steel

Finish:

- B12 - Standard White



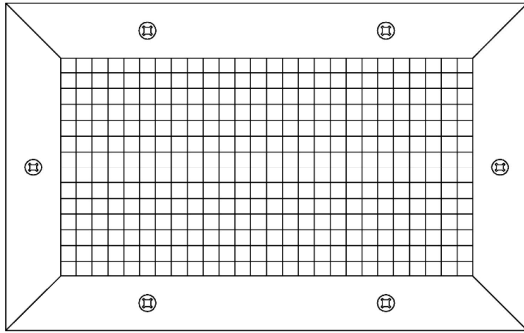
Scan for link to additional product information

PROJECT: TECUMSEH
ENGINEER:
DESCRIPTION: Square Plaque Diffuser
SPD-1-2//1/6//12/12/3P/24x24/////B12

SUBMITTAL NO: 258503-F
CUSTOMER:

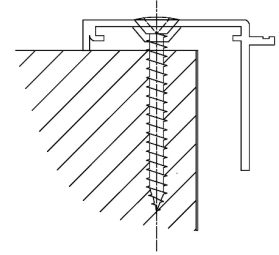
SUBMITTAL DATE: 11/8/2024

80 Egg Crate Grille – 1/2" x 1/2" x 1/2" Core



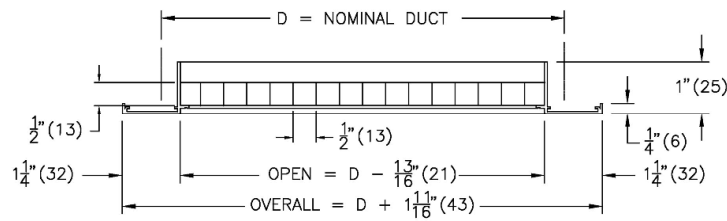
Fastening: A

Countersunk Screw Holes



Border: F

1 1/4" (32) Flat Frame



Material:

- Grille - Aluminum construction

Finish:

- B12 - Standard White

Notes:

- 1/2" x 1/2" x 1/2" aluminum grid core
- Minimum duct size = 6" x 4" (152mm x 102mm)
- Maximum duct size without mullion = 48" x 24" (1219mm x 610mm)
- Maximum duct size with mullion = 96" x 48" (2438mm x 1219mm)
- Units with mullion supplied in one-piece frame construction
- Units over 96" x 48" (2438mm x 1219mm) supplied in sections c/w Duct Mounting Channel
- Factory tolerance $\pm 1/32"$ (1mm)

PROJECT: TECUMSEH

ENGINEER:

DESCRIPTION: Egg Crate Grille, 1/2" X 1/2" X 1/2"

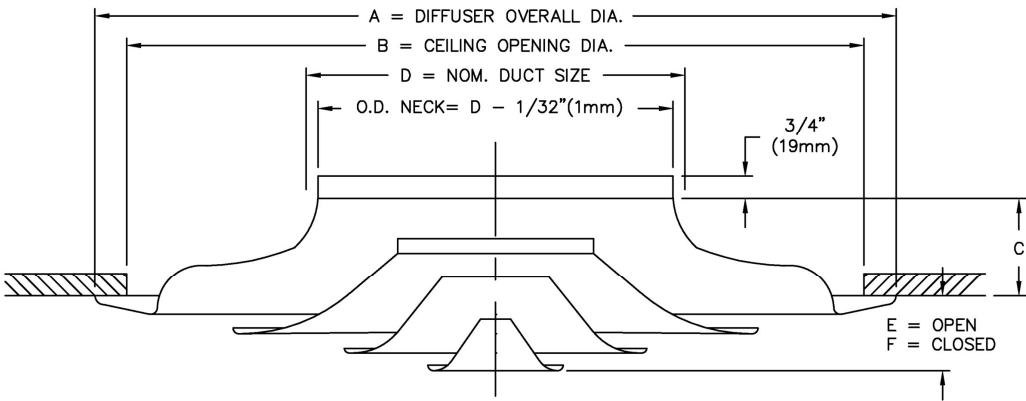
80//1/8.000,6.000,10.000,12.000/8.000,6.000,10.000,12.000//SW/F////////A////////B12

SUBMITTAL NO: 259683-E

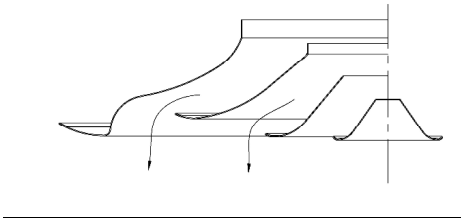
CUSTOMER:

SUBMITTAL DATE: 11/8/2024

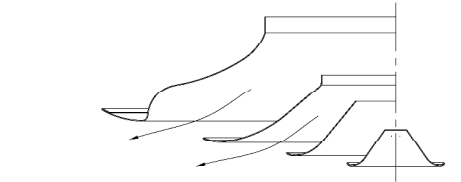
RCD Steel Round Cone Diffuser, 3 Position Adjustable



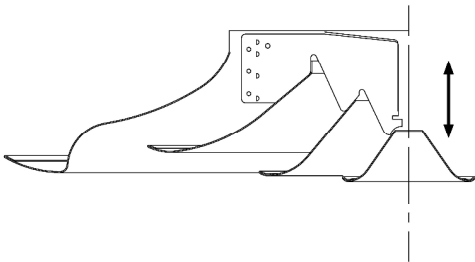
Vertical Airflow



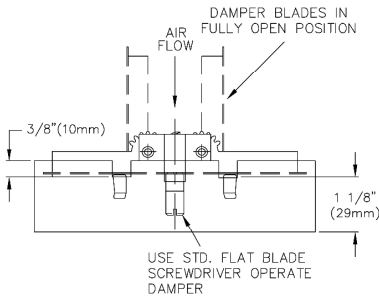
Horizontal Airflow



Detail View:



Damper:



Notes:

- Horizontal to vertical pattern adjustments, three position
- Tool free removal of inner cone
- Damper: VCR8 - Full Flow Damper Duct Mounted (Size 6"-14")
- Factory Tolerance: ± 1/32" (1 mm)

Material:

- Heavy Gauge Spun Steel

Finish:

- B12: Standard White



Scan for link to additional product information and installation instructions

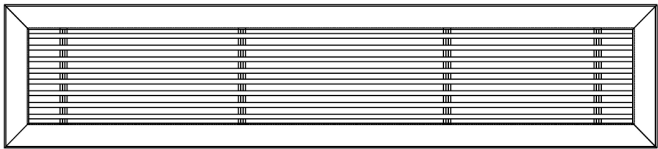
PROJECT: TECUMSEH
ENGINEER:
DESCRIPTION: Round Cone Diff-Ceiling W/3 Position Adjstmnt,Stl
RCD//1/12/////8///B12

SUBMITTAL NO: 260677-A
CUSTOMER:

SUBMITTAL DATE: 11/8/2024

LBP

Linear Bar Grille (Pressed Core)



End Conditions:

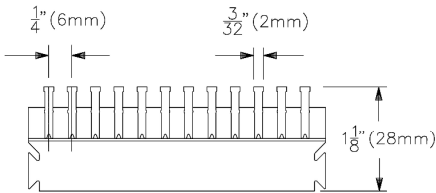
XX Both Mitred Ends

Finish:

B12 Standard White

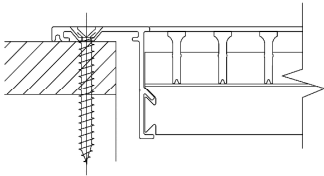
Core

15A 0 Degree Deflection - 3/32" Bars - 1/4" On Center Spacing



Fastening

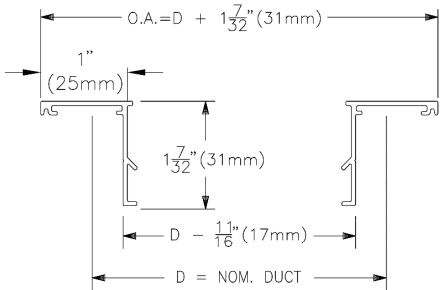
A Countersunk Screw holes



- For ceiling, wall, and sill application.
- 1000 & 1250 frames only.

Border

1000 1" (25) Border



Notes

- Aluminum construction.
- Core bars are parallel to the long dimension.
- Core bars are fixed.
- Maximum section length = 72" (1829mm). Sections can be joined for a continuous appearance.
- Units wider than 24" (610mm) are supplied in multiple sections with mounting channels.
- Not suitable for floor applications.
- Factory tolerance: ± 1/32 (1mm) per grille section.

PROJECT: TECUMSEH
ENGINEER:
DESCRIPTION: Linear Bar Grille (Pressed Core)
LBP-1-1//I/I/72.000/4.000/15A/1000//L//A/XX///B12

SUBMITTAL NO: 258151-D
CUSTOMER:

SUBMITTAL DATE: 11/8/2024



54 Audia Court, Unit 2
Concord, ON L4K 3N5
(905)-738-1400

Submittal 24-275-007

PROJECT NAME	PROJECT ADDRESS	DATE SUBMITTED
BMO 2680 TECUMSEH WINDSOR 24-275	2680 Tecumseh Rd W, Windsor, ON N9B 3P9	Nov 8, 2024

TO	FROM
Chanchal Banwait	PAUL LEDDY
COMPANY	COMPANY
O.N. SITE CONSTRUCTION INC.	Consult Mechanical Inc.
EMAIL	EMAIL
Chanchal@onsiteconstruction.ca	paul.l@consultmechanical.com
ADDRESS	ADDRESS
2861 Sherwood Heights Dr Unit 40 Oakville, ON L6J 7K1	54 Audia Court, Unit 2 Concord, ON L4K 3N5

Title

EH Price VAV's

Description

VAV Boxes 1 through 12 EH Price Model SDV

Package Items

SPEC	SUBSECTION ITEM	TYPE
M0-001	M0-001 Variable Air Volume Box Schedule	Shop Drawings



Terminals Submittals

Job Name: TECUMSEH

Date Printed: 11/8/2024

Spec Section: 15 - HVAC

Contact: 571 Chrislea Rd., Unit 3
Woodbridge, ON L4L 8A2



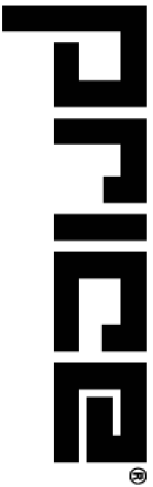
All-In-One
Detailed Submittal Schedule
Terminals

Tag	VAV-8	VAV-1	VAV-2	VAV-3
#	20	13	14	15
Qty	1	1	1	1
Model	SDV	SDV	SDV	SDV
Size 1	6	6	5	9
Max Primary (CFM)	550	550	500	1400
Min Primary (CFM)	65	65	60	160
Heat Min (CFM)	65	65	60	160
T Liner	FG50	FG50	FG50	FG50
Sequence	2000	2000	2000	2000
Aux/Fan/Mix (CFM)	0	0	0	0
Acc. 1	ATTSP	ATTSP	ATTSP	ATTSP
Acc. 2	CRH	CRH	CRH	CRH

The list provided above is for reference purpose only. Contractor to confirm quantity, size, tag, control and coil handing (if applicable) of all VAV / FPB boxes prior to release. All controls will be by others.

Tag	VAV-4	VAV-5	VAV-6	VAV-7
#	16	17	18	19
Qty	1	1	1	1
Model	SDV	SDV	SDV	SDV
Size 1	8	5	14	6
Max Primary (CFM)	1100	500	3700	550
Min Primary (CFM)	125	60	430	65
Heat Min (CFM)	125	60	430	65
T Liner	FG50	FG50	FG50	FG50
Sequence	2000	2000	2000	2000
Aux/Fan/Mix (CFM)	0	0	0	0
Acc. 1	ATTSP	ATTSP	ATTSP	ATTSP
Acc. 2	CRH	CRH	CRH	CRH

Tag	VAV-9	VAV-10	VAV-11	VAV-12
#	21	22	23	24
Qty	1	1	1	1
Model	SDV	SDV	SDV	SDV
Size 1	5	8	7	4
Max Primary (CFM)	500	1100	800	400
Min Primary (CFM)	60	125	95	60
Heat Min (CFM)	60	125	95	60
T Liner	FG50	FG50	FG50	FG50
Sequence	2000	2000	2000	2000
Aux/Fan/Mix (CFM)	0	0	0	0
Acc. 1	ATTSP	ATTSP	ATTSP	ATTSP
Acc. 2	CRH	CRH	CRH	CRH

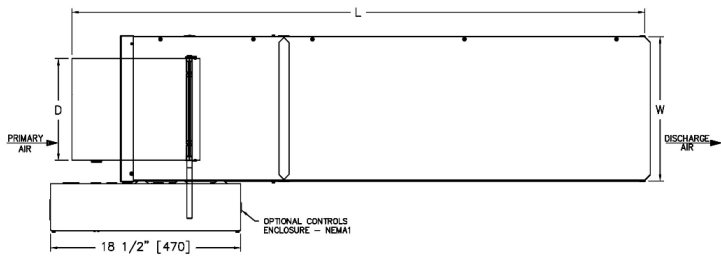


Performance Notes

Date Printed: 11/8/2024

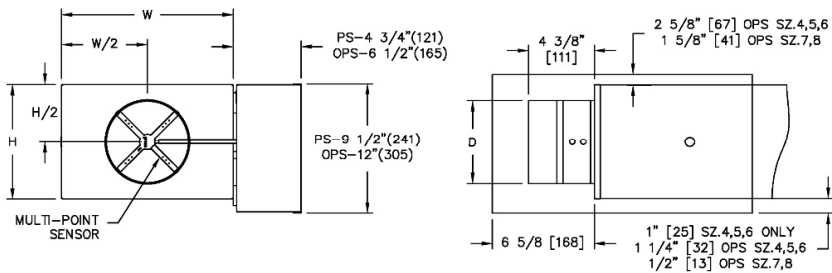
1. Dashes (--) indicate NC values less than 20.
2. Sound power levels are given in decibels (dB).
3. Dashes (--) indicate sound power levels below 36-29-26-22-19-17 for each octave band; values below these sound power levels are considered below significance per AHRI 880.
4. Minimum operating pressure is the minimum static pressure required to operate the terminal item assembly at maximum primary flow with a wide open damper.
5. Airflow is given in cubic feet per minute (cfm).
6. Air pressure drop is given in inches water gauge (in. w.g.), and water pressure drop is given in feet of water gauge (ft. w.g.).

SDV Single Duct w/ 3ft Attenuator



Unit Size	Casing Size	Inlet	Casing		Length
		D	W	H	L
6	6	5 7/8	12	8	55 1/8

Controls Type



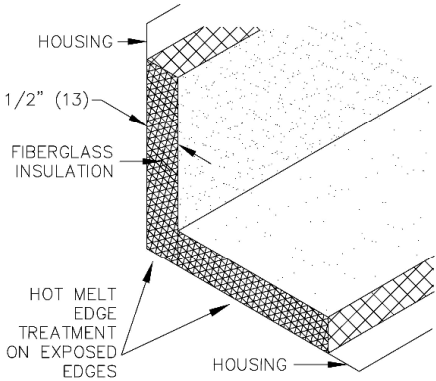
- Multi-point, center averaging airflow sensor.
- Controls enclosure will be supplied as illustrated on right hand side.
- Controls are supplied by controls contractor and field installed.
- PS - NEMA 1 controls enclosure included.
- Standard NEMA 1 controls enclosure mounting position.
- Pressure independent

Notes

- 22 Gauge zinc coated steel housing. Mechanically sealed, leak resistant construction.
- Rectangular discharge opening with slip and drive cleat duct connection.
- Assembly ETL certified to UL50.
- Units not to be used for temporary heat or ventilation during construction.
- Damper blade constructed of two layers of galvanized steel with a sandwiched peripheral gasket.
- 1/2" (13) diameter zinc coated damper shaft with position indicator.

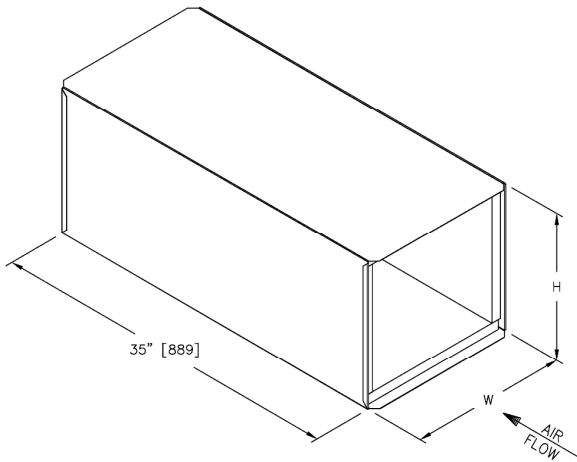
Insulation: FG50

- Internal Insulation – Fiberglass 1/2" (13mm) thick, 1.75 lb/cu.ft density, meets requirements of NFPA90A and UL 181.
- R-Value=2.1



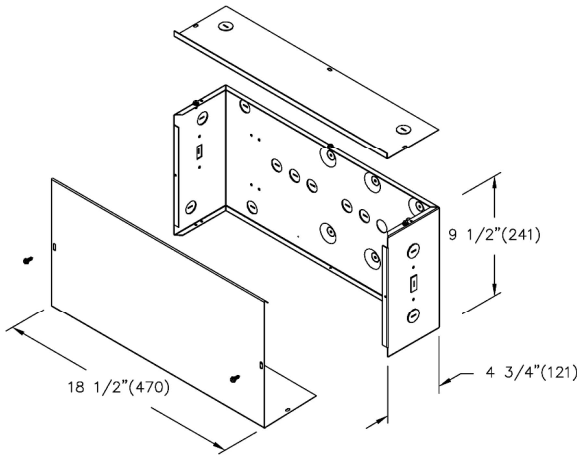
Attenuator: ATTSP

3FT Separate



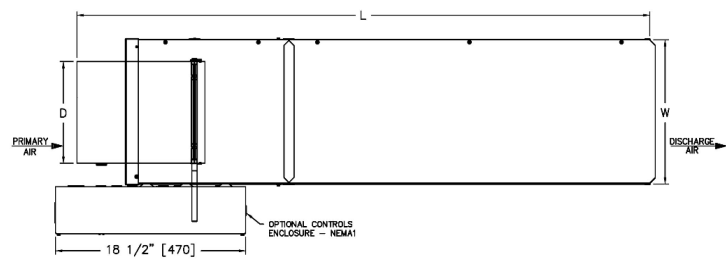
Unit Size	W	H
6	12	8

Protective Shroud



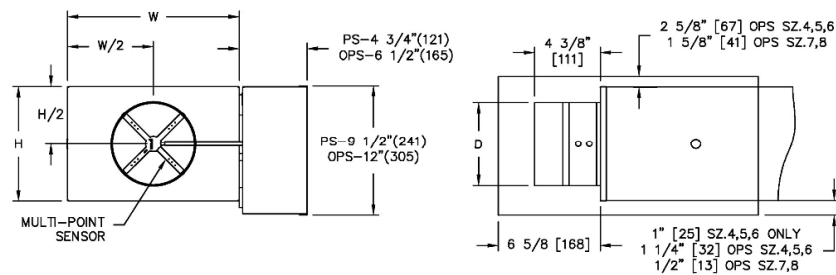
PROJECT: TECUMSEH	SUBMITTAL NO: 275707	SUBMITTAL DATE: 11/8/2024
ENGINEER:	CUSTOMER:	
DESCRIPTION: Single Duct Variable Volume		
SDV-2-1//I/6/CRH/SP300/FLD/FG50///ATTSP//CFM/22GA/PS/STD////////0.00////////0.0////////65/550/65/550/0/////////2000		

SDV Single Duct w/ 3ft Attenuator



Unit Size	Casing Size	Inlet	Casing		Length
		D	W	H	L
6	6	5 7/8	12	8	55 1/8

Controls Type



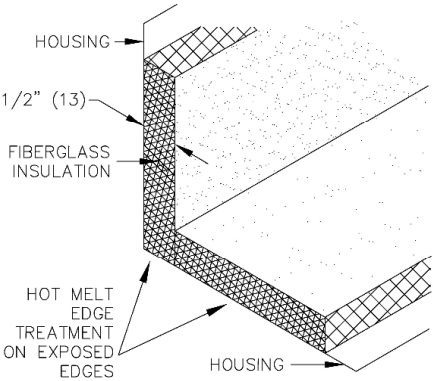
- Multi-point, center averaging airflow sensor.
- Controls enclosure will be supplied as illustrated on right hand side.
- Controls are supplied by controls contractor and field installed.
- PS - NEMA 1 controls enclosure included.
- Standard NEMA 1 controls enclosure mounting position.
- Pressure independent

Notes

- 22 Gauge zinc coated steel housing. Mechanically sealed, leak resistant construction.
- Rectangular discharge opening with slip and drive cleat duct connection.
- Assembly ETL certified to UL50.
- Units not to be used for temporary heat or ventilation during construction.
- Damper blade constructed of two layers of galvanized steel with a sandwiched peripheral gasket.
- 1/2" (13) diameter zinc coated damper shaft with position indicator.

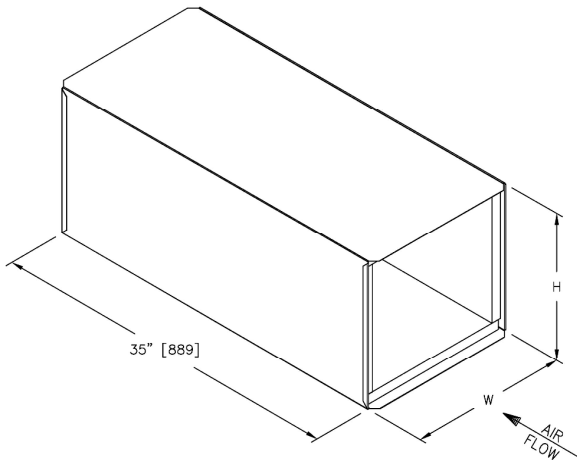
Insulation: FG50

- Internal Insulation – Fiberglass 1/2" (13mm) thick, 1.75 lb/cu.ft density, meets requirements of NFPA90A and UL 181.
- R-Value=2.1



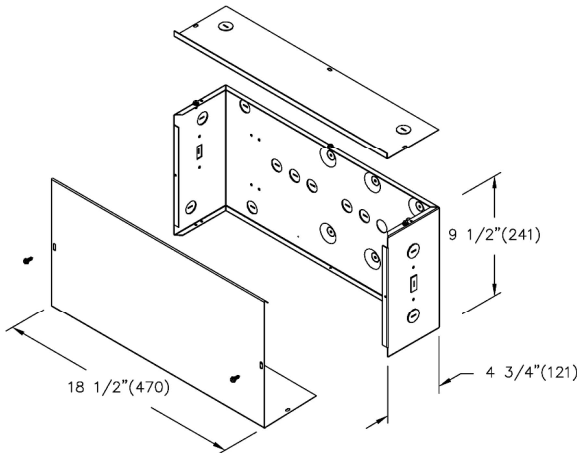
Attenuator: ATTSP

3FT Separate

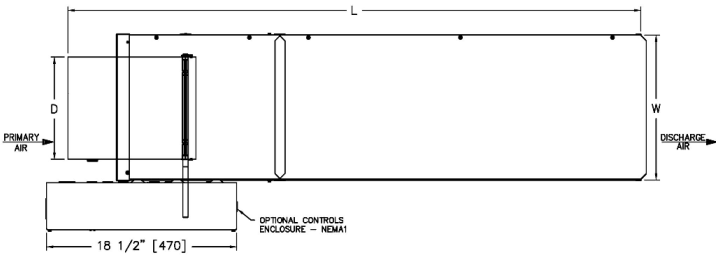


Unit Size	W	H
6	12	8

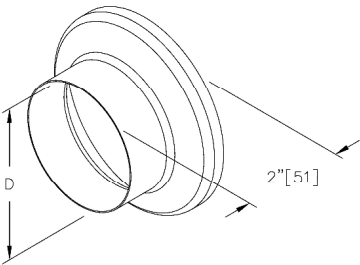
Protective Shroud



SDV Single Duct w/ 3ft Attenuator



Inlet Diameter Reducer Detail

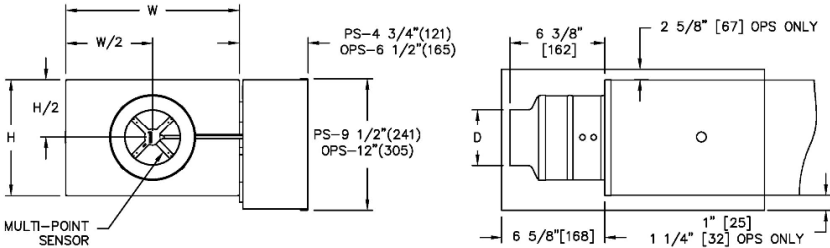


Size 4 and 5 have a 6" diameter duct with inlet reducer as shown

Inlet Reducer Dimensions	
Unit Size	D
5	4 7/8

Unit Size	Casing Size	Inlet	Casing		Length
		D	W	H	L
5	6	4 7/8	12	8	57 1/8

Controls Type



- Multi-point, center averaging airflow sensor.
- Controls enclosure will be supplied as illustrated on right hand side.
- Controls are supplied by controls contractor and field installed.
- PS - NEMA 1 controls enclosure included.
- Standard NEMA 1 controls enclosure mounting position.
- Pressure independent

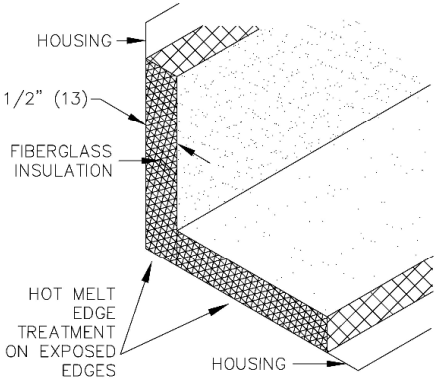
Notes

- 22 Gauge zinc coated steel housing. Mechanically sealed, leak resistant construction.
- Rectangular discharge opening with slip and drive cleat duct connection.
- Assembly ETL certified to UL50.
- Units not to be used for temporary heat or ventilation during construction.
- Damper blade constructed of two layers of galvanized steel with a sandwiched peripheral gasket.
- 1/2" (13) diameter zinc coated damper shaft with position indicator.



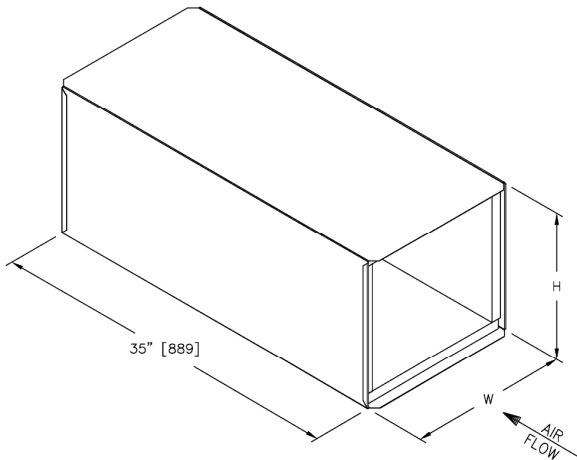
Insulation: FG50

- Internal Insulation – Fiberglass 1/2" (13mm) thick, 1.75 lb/cu.ft density, meets requirements of NFPA90A and UL 181.
- R-Value=2.1



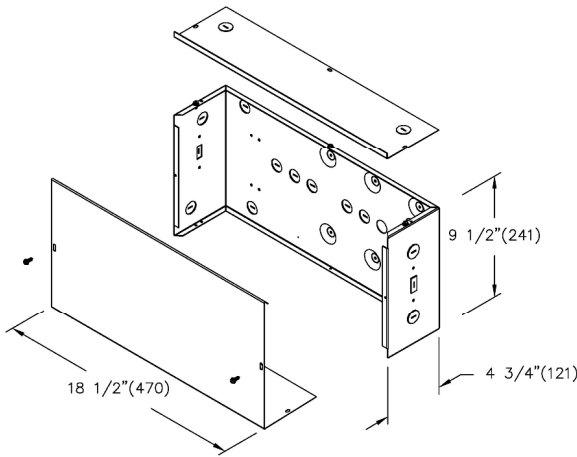
Attenuator: ATTSP

3FT Separate



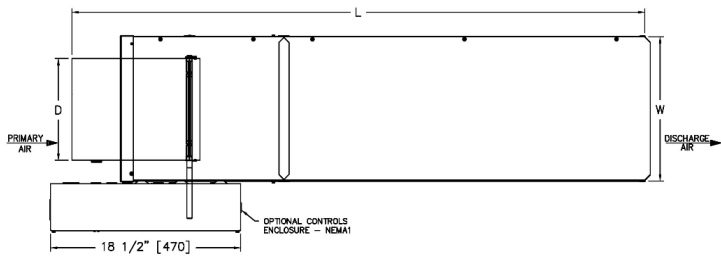
Unit Size	W	H
5	12	8

Protective Shroud



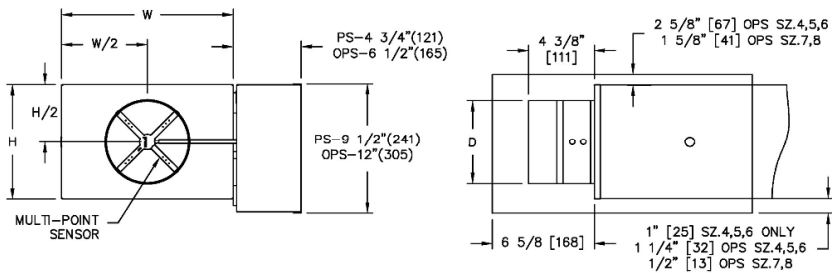
PROJECT: TECUMSEH	SUBMITTAL NO: 275707	SUBMITTAL DATE: 11/8/2024
ENGINEER:	CUSTOMER:	
DESCRIPTION: Single Duct Variable Volume		
SDV-2-1//1/5/CRH/SP300/FLD/FG50///ATTSP//CFM/22GA/PS/STD////////0.00////////0.0////////60/500/60/500/0////////2000		

SDV Single Duct w/ 3ft Attenuator



Unit Size	Casing Size	Inlet	Casing		Length
		D	W	H	L
9	10	8 7/8	14	12 1/2	55 1/8

Controls Type



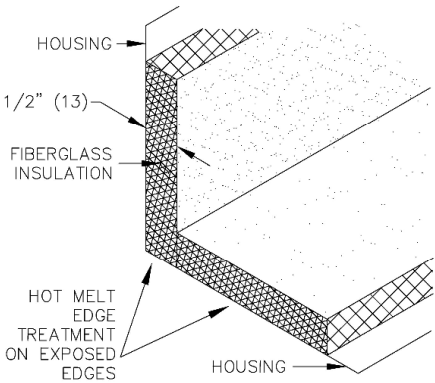
- Multi-point, center averaging airflow sensor.
- Controls enclosure will be supplied as illustrated on right hand side.
- Controls are supplied by controls contractor and field installed.
- PS - NEMA 1 controls enclosure included.
- Standard NEMA 1 controls enclosure mounting position.
- Pressure independent

Notes

- 22 Gauge zinc coated steel housing. Mechanically sealed, leak resistant construction.
- Rectangular discharge opening with slip and drive cleat duct connection.
- Assembly ETL certified to UL50.
- Units not to be used for temporary heat or ventilation during construction.
- Damper blade constructed of two layers of galvanized steel with a sandwiched peripheral gasket.
- 1/2" (13) diameter zinc coated damper shaft with position indicator.

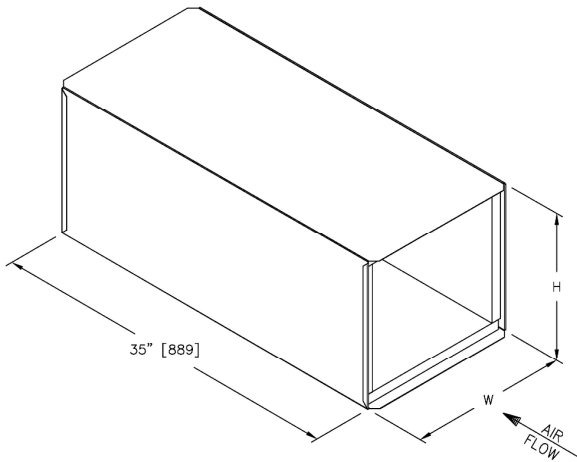
Insulation: FG50

- Internal Insulation – Fiberglass 1/2" (13mm) thick, 1.75 lb/cu.ft density, meets requirements of NFPA90A and UL 181.
- R-Value=2.1



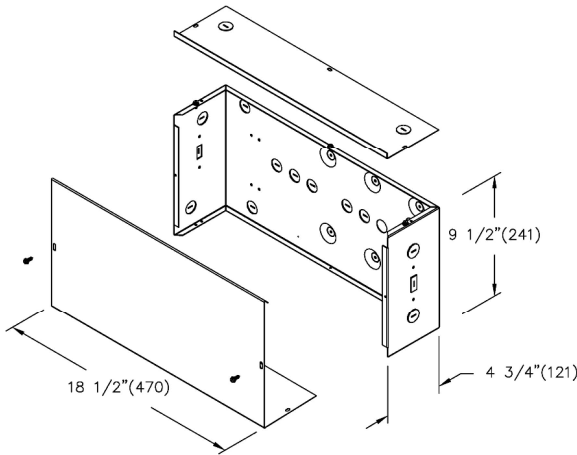
Attenuator: ATTSP

3FT Separate

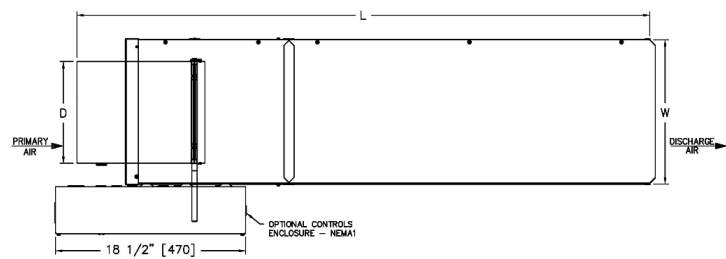


Unit Size	W	H
9	14	12 1/2

Protective Shroud

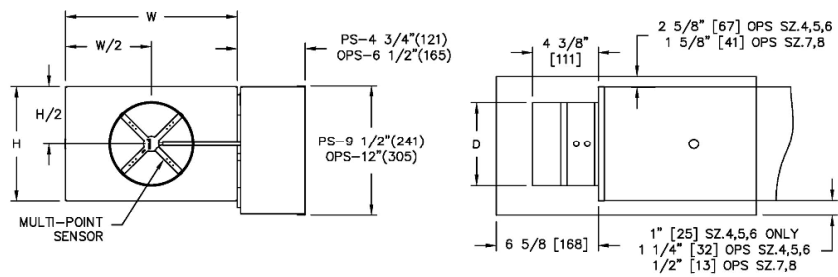


SDV Single Duct w/ 3ft Attenuator



Unit Size	Casing Size	Inlet	Casing		Length
		D	W	H	L
8	8	7 7/8	12	10	55 1/8

Controls Type



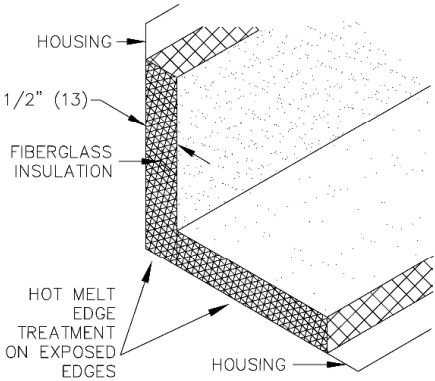
- Multi-point, center averaging airflow sensor.
- Controls enclosure will be supplied as illustrated on right hand side.
- Controls are supplied by controls contractor and field installed.
- PS - NEMA 1 controls enclosure included.
- Standard NEMA 1 controls enclosure mounting position.
- Pressure independent

Notes

- 22 Gauge zinc coated steel housing. Mechanically sealed, leak resistant construction.
- Rectangular discharge opening with slip and drive cleat duct connection.
- Assembly ETL certified to UL50.
- Units not to be used for temporary heat or ventilation during construction.
- Damper blade constructed of two layers of galvanized steel with a sandwiched peripheral gasket.
- 1/2" (13) diameter zinc coated damper shaft with position indicator.

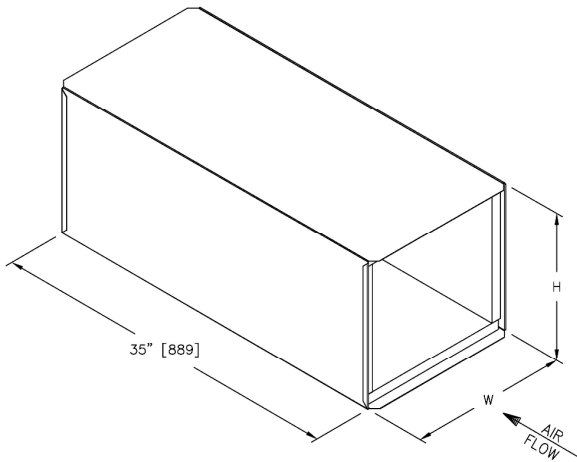
Insulation: FG50

- Internal Insulation – Fiberglass 1/2" (13mm) thick, 1.75 lb/cu.ft density, meets requirements of NFPA90A and UL 181.
- R-Value=2.1



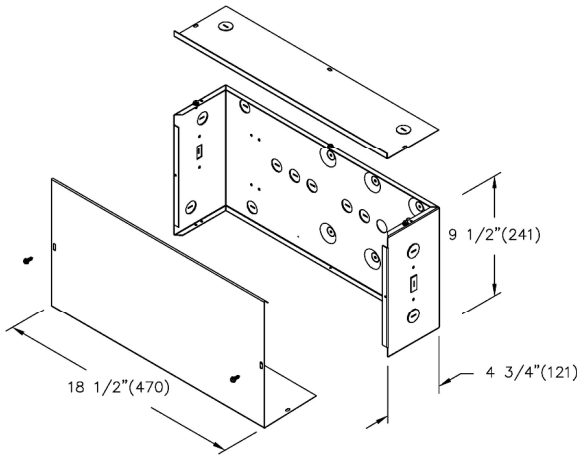
Attenuator: ATTSP

3FT Separate

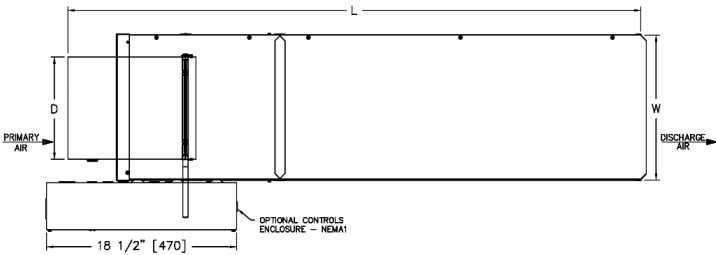


Unit Size	W	H
8	12	10

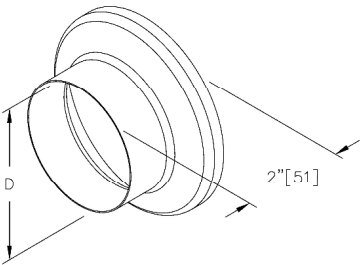
Protective Shroud



SDV Single Duct w/ 3ft Attenuator



Inlet Diameter Reducer Detail

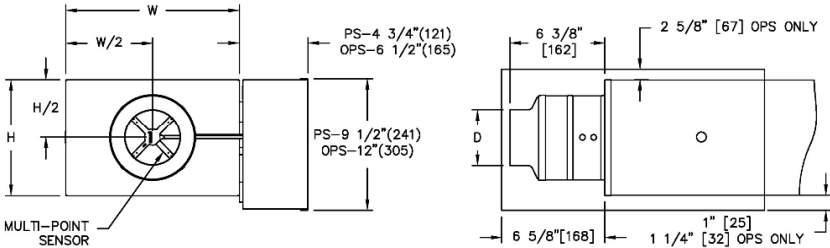


Size 4 and 5 have a 6" diameter duct with inlet reducer as shown

Inlet Reducer Dimensions	
Unit Size	D
5	4 7/8

Unit Size	Casing Size	Inlet	Casing		Length
		D	W	H	L
5	6	4 7/8	12	8	57 1/8

Controls Type



- Multi-point, center averaging airflow sensor.
- Controls enclosure will be supplied as illustrated on right hand side.
- Controls are supplied by controls contractor and field installed.
- PS - NEMA 1 controls enclosure included.
- Standard NEMA 1 controls enclosure mounting position.
- Pressure independent

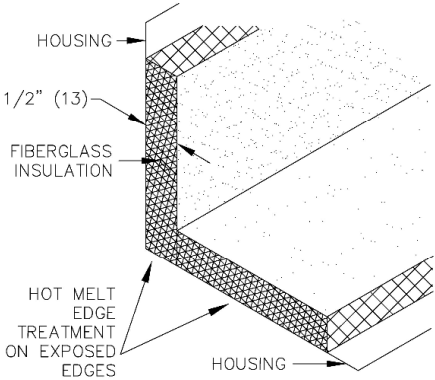
Notes

- 22 Gauge zinc coated steel housing. Mechanically sealed, leak resistant construction.
- Rectangular discharge opening with slip and drive cleat duct connection.
- Assembly ETL certified to UL50.
- Units not to be used for temporary heat or ventilation during construction.
- Damper blade constructed of two layers of galvanized steel with a sandwiched peripheral gasket.
- 1/2" (13) diameter zinc coated damper shaft with position indicator.



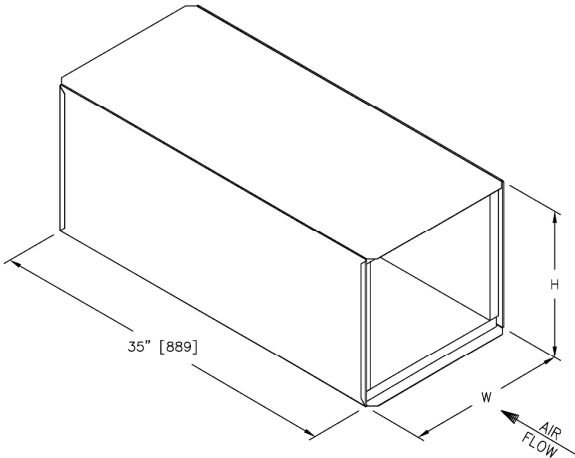
Insulation: FG50

- Internal Insulation – Fiberglass 1/2" (13mm) thick, 1.75 lb/cu.ft density, meets requirements of NFPA90A and UL 181.
- R-Value=2.1



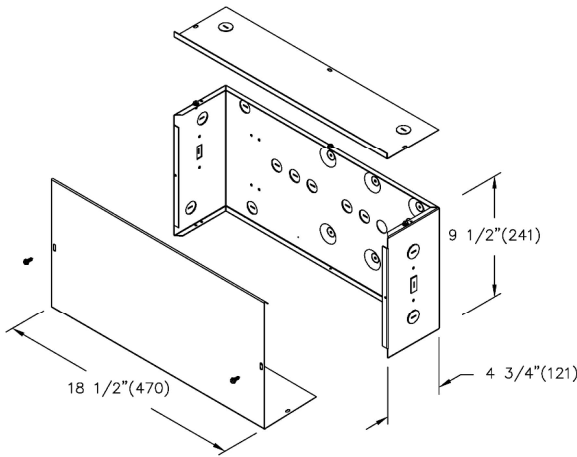
Attenuator: ATTSP

3FT Separate



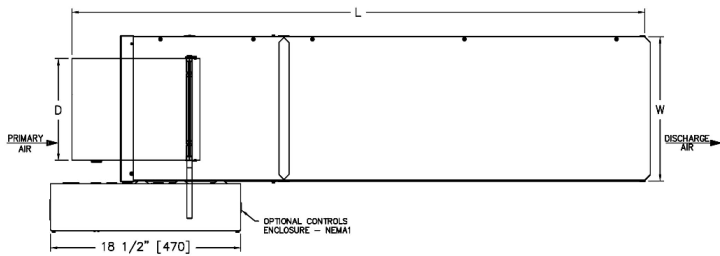
Unit Size	W	H
5	12	8

Protective Shroud



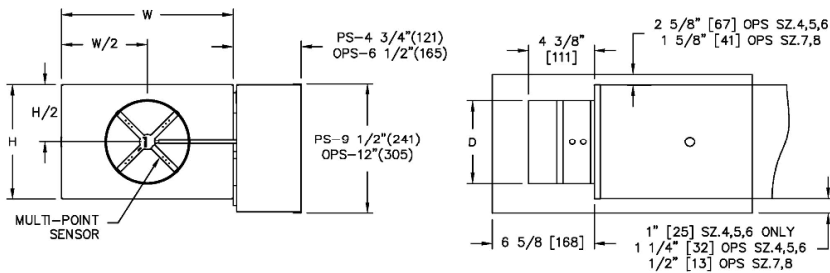
PROJECT: TECUMSEH	SUBMITTAL NO: 275707	SUBMITTAL DATE: 11/8/2024
ENGINEER:	CUSTOMER:	
DESCRIPTION: Single Duct Variable Volume		
SDV-2-1//1/5/CRH/SP300/FLD/FG50///ATTSP//CFM/22GA/PS/STD////////0.00////////0.0////////60/500/60/500/0////////2000		

SDV Single Duct w/ 3ft Attenuator



Unit Size	Casing Size	Inlet	Casing		Length
		D	W	H	L
14	14	13 7/8	20	17 1/2	55 1/8

Controls Type



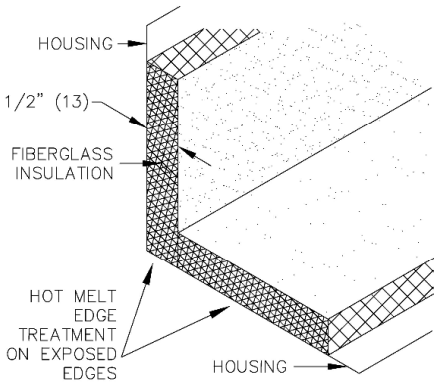
- Multi-point, center averaging airflow sensor.
- Controls enclosure will be supplied as illustrated on right hand side.
- Controls are supplied by controls contractor and field installed.
- PS - NEMA 1 controls enclosure included.
- Standard NEMA 1 controls enclosure mounting position.
- Pressure independent

Notes

- 22 Gauge zinc coated steel housing. Mechanically sealed, leak resistant construction.
- Rectangular discharge opening with slip and drive cleat duct connection.
- Assembly ETL certified to UL50.
- Units not to be used for temporary heat or ventilation during construction.
- Damper blade constructed of two layers of galvanized steel with a sandwiched peripheral gasket.
- 1/2" (13) diameter zinc coated damper shaft with position indicator.

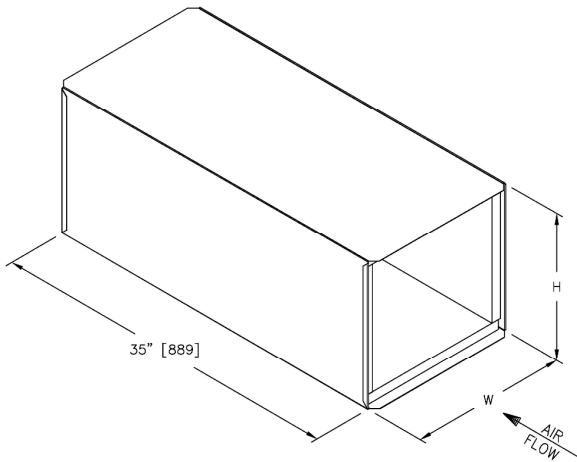
Insulation: FG50

- Internal Insulation – Fiberglass 1/2" (13mm) thick, 1.75 lb/cu.ft density, meets requirements of NFPA90A and UL 181.
- R-Value=2.1



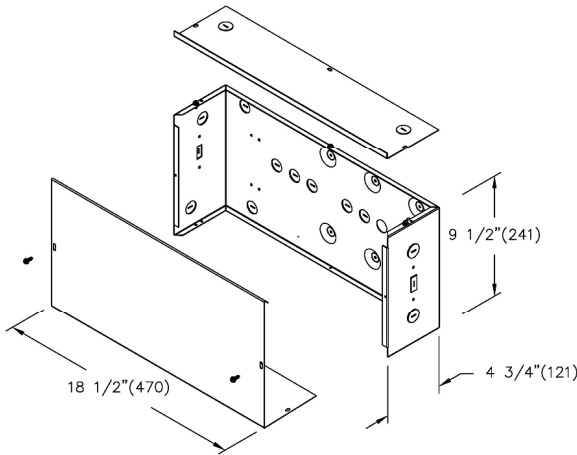
Attenuator: ATTSP

3FT Separate

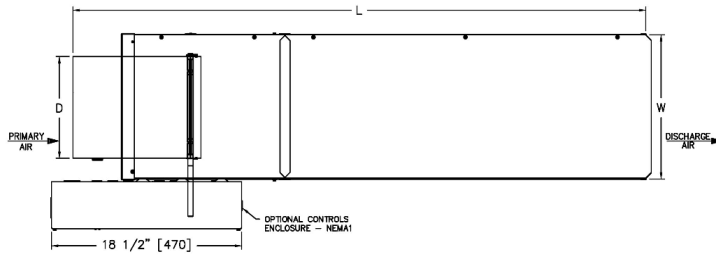


Unit Size	W	H
14	20	17 1/2

Protective Shroud

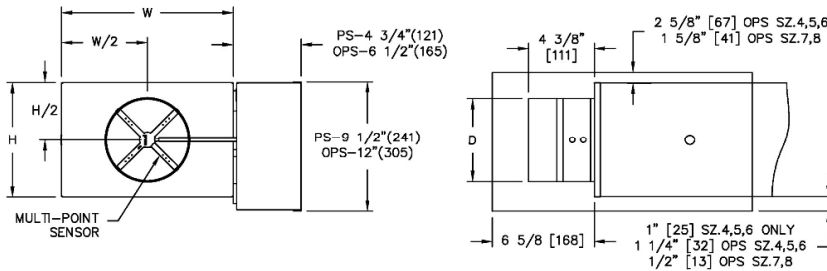


SDV Single Duct w/ 3ft Attenuator



Unit Size	Casing Size	Inlet	Casing		Length
		D	W	H	L
6	6	5 7/8	12	8	55 1/8

Controls Type



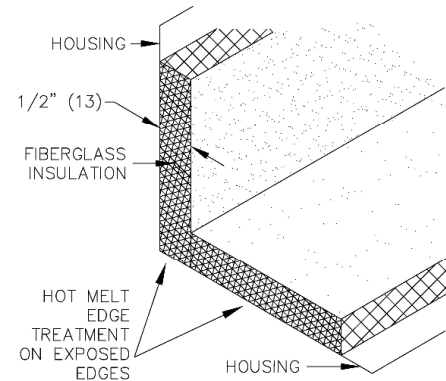
- Multi-point, center averaging airflow sensor.
- Controls enclosure will be supplied as illustrated on right hand side.
- Controls are supplied by controls contractor and field installed.
- PS - NEMA 1 controls enclosure included.
- Standard NEMA 1 controls enclosure mounting position.
- Pressure independent

Notes

- 22 Gauge zinc coated steel housing. Mechanically sealed, leak resistant construction.
- Rectangular discharge opening with slip and drive cleat duct connection.
- Assembly ETL certified to UL50.
- Units not to be used for temporary heat or ventilation during construction.
- Damper blade constructed of two layers of galvanized steel with a sandwiched peripheral gasket.
- 1/2" (13) diameter zinc coated damper shaft with position indicator.

Insulation: FG50

- Internal Insulation – Fiberglass 1/2" (13mm) thick, 1.75 lb/cu.ft density, meets requirements of NFPA90A and UL 181.
- R-Value=2.1



PROJECT: TECUMSEH

ENGINEER:

DESCRIPTION: Single Duct Variable Volume

SDV-2-1//I/6/CRH/SP300/FLD/FG50///ATTSP//CFM/22GA/PS/STD////////0.00////////0.0////////65/550/65/550/0////////2000

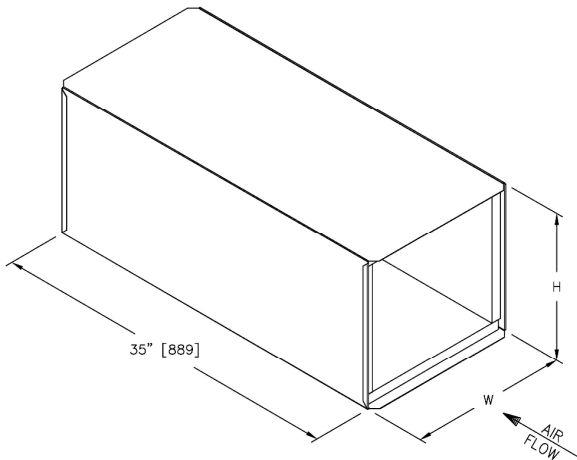
SUBMITTAL NO: 275707

CUSTOMER:

SUBMITTAL DATE: 11/8/2024

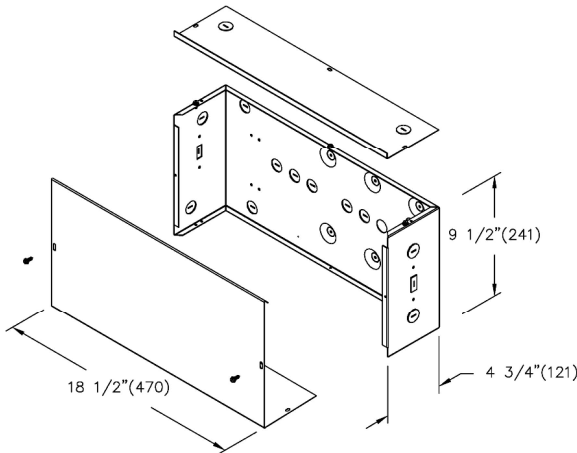
Attenuator: ATTSP

3FT Separate

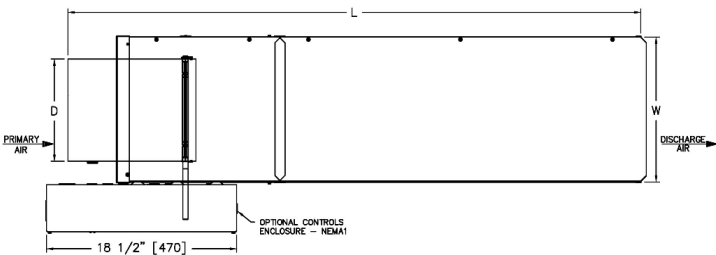


Unit Size	W	H
6	12	8

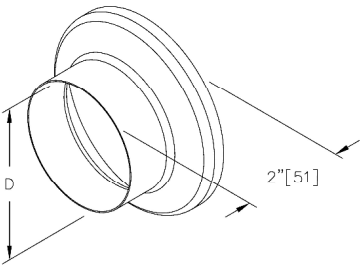
Protective Shroud



SDV Single Duct w/ 3ft Attenuator



Inlet Diameter Reducer Detail

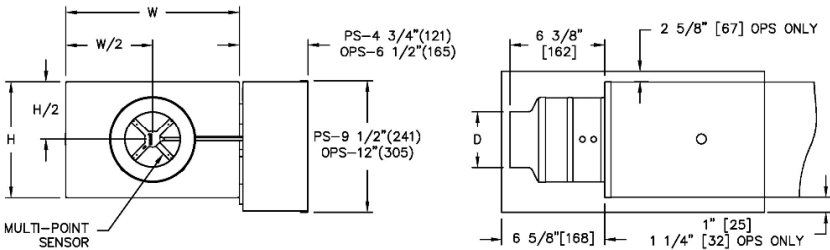


Size 4 and 5 have a 6" diameter duct with inlet reducer as shown

Inlet Reducer Dimensions	
Unit Size	D
5	4 7/8

Unit Size	Casing Size	Inlet	Casing		Length
		D	W	H	L
5	6	4 7/8	12	8	57 1/8

Controls Type



- Multi-point, center averaging airflow sensor.
- Controls enclosure will be supplied as illustrated on right hand side.
- Controls are supplied by controls contractor and field installed.
- PS - NEMA 1 controls enclosure included.
- Standard NEMA 1 controls enclosure mounting position.
- Pressure independent

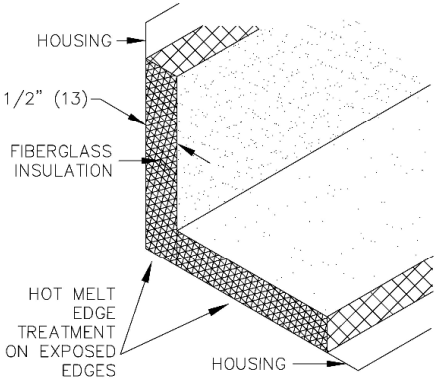
Notes

- 22 Gauge zinc coated steel housing. Mechanically sealed, leak resistant construction.
- Rectangular discharge opening with slip and drive cleat duct connection.
- Assembly ETL certified to UL50.
- Units not to be used for temporary heat or ventilation during construction.
- Damper blade constructed of two layers of galvanized steel with a sandwiched peripheral gasket.
- 1/2" (13) diameter zinc coated damper shaft with position indicator.



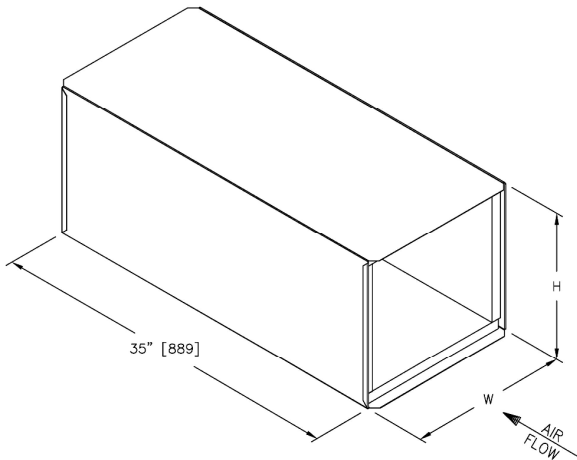
Insulation: FG50

- Internal Insulation – Fiberglass 1/2" (13mm) thick, 1.75 lb/cu.ft density, meets requirements of NFPA90A and UL 181.
- R-Value=2.1



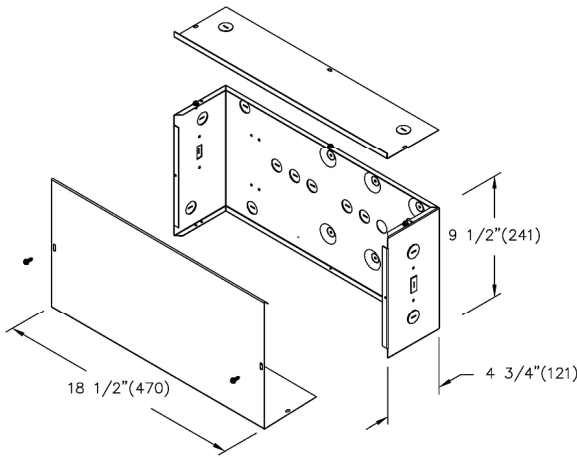
Attenuator: ATTSP

3FT Separate



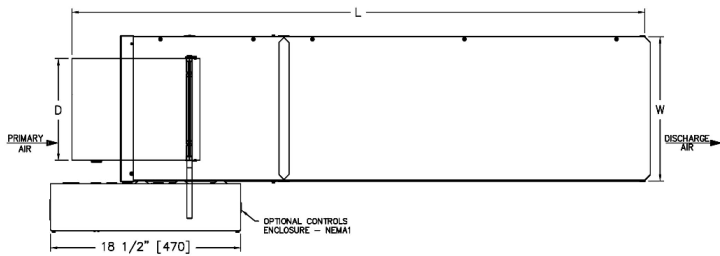
Unit Size	W	H
5	12	8

Protective Shroud



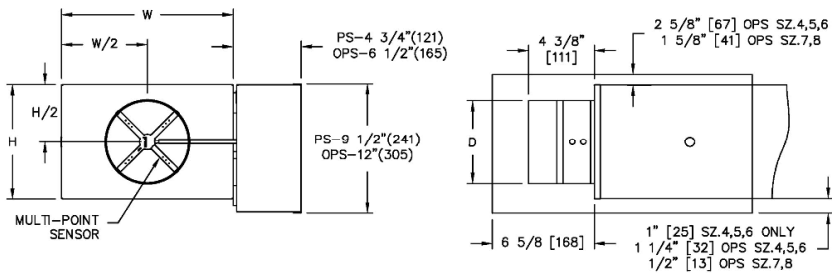
PROJECT: TECUMSEH	SUBMITTAL NO: 275707	SUBMITTAL DATE: 11/8/2024
ENGINEER:	CUSTOMER:	
DESCRIPTION: Single Duct Variable Volume		
SDV-2-1//1/5/CRH/SP300/FLD/FG50///ATTSP//CFM/22GA/PS/STD////////0.00////////0.0////////60/500/60/500/0////////2000		

SDV Single Duct w/ 3ft Attenuator



Unit Size	Casing Size	Inlet	Casing		Length
		D	W	H	L
8	8	7 7/8	12	10	55 1/8

Controls Type



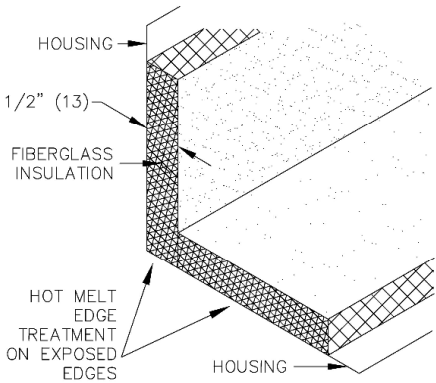
- Multi-point, center averaging airflow sensor.
- Controls enclosure will be supplied as illustrated on right hand side.
- Controls are supplied by controls contractor and field installed.
- PS - NEMA 1 controls enclosure included.
- Standard NEMA 1 controls enclosure mounting position.
- Pressure independent

Notes

- 22 Gauge zinc coated steel housing. Mechanically sealed, leak resistant construction.
- Rectangular discharge opening with slip and drive cleat duct connection.
- Assembly ETL certified to UL50.
- Units not to be used for temporary heat or ventilation during construction.
- Damper blade constructed of two layers of galvanized steel with a sandwiched peripheral gasket.
- 1/2" (13) diameter zinc coated damper shaft with position indicator.

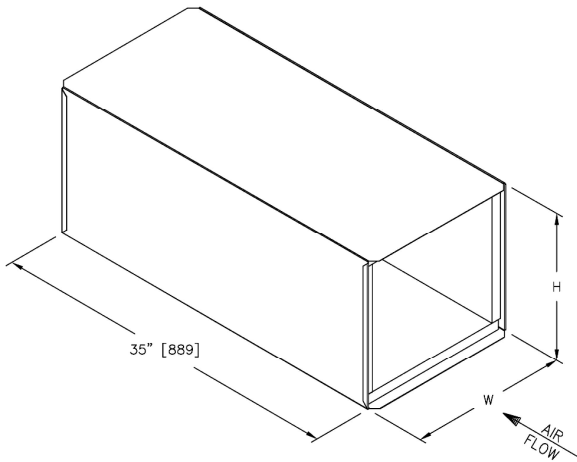
Insulation: FG50

- Internal Insulation – Fiberglass 1/2" (13mm) thick, 1.75 lb/cu.ft density, meets requirements of NFPA90A and UL 181.
- R-Value=2.1



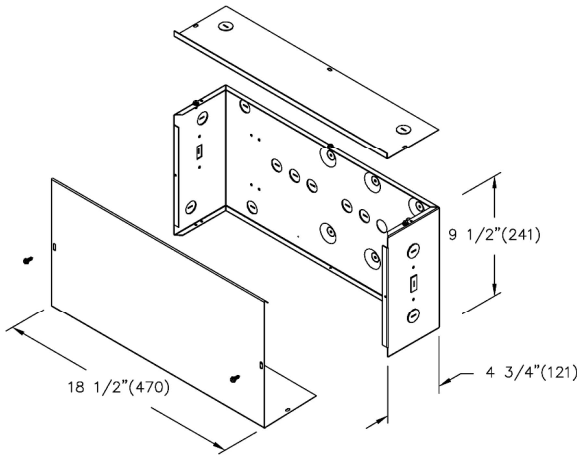
Attenuator: ATTSP

3FT Separate

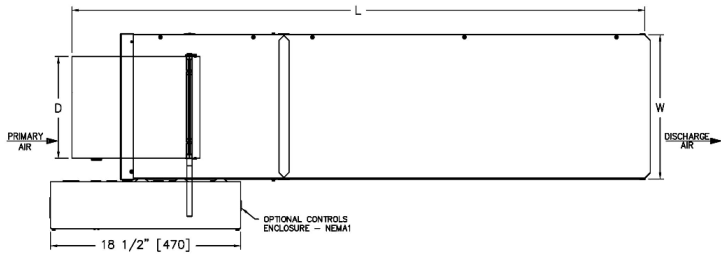


Unit Size	W	H
8	12	10

Protective Shroud

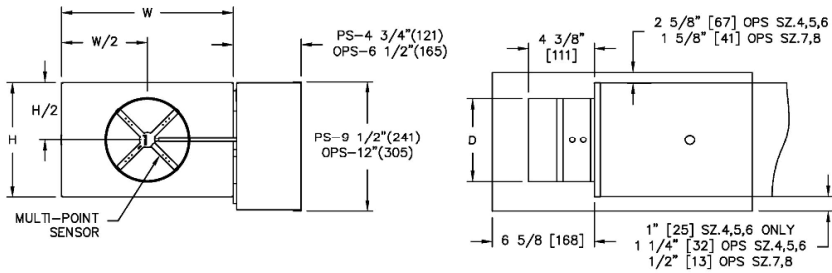


SDV Single Duct w/ 3ft Attenuator



Unit Size	Casing Size	Inlet	Casing		Length
		D	W	H	L
7	8	6 7/8	12	10	55 1/8

Controls Type



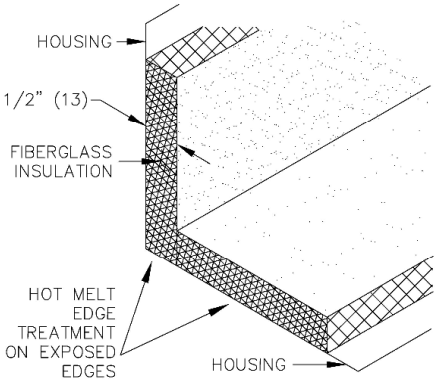
- Multi-point, center averaging airflow sensor.
- Controls enclosure will be supplied as illustrated on right hand side.
- Controls are supplied by controls contractor and field installed.
- PS - NEMA 1 controls enclosure included.
- Standard NEMA 1 controls enclosure mounting position.
- Pressure independent

Notes

- 22 Gauge zinc coated steel housing. Mechanically sealed, leak resistant construction.
- Rectangular discharge opening with slip and drive cleat duct connection.
- Assembly ETL certified to UL50.
- Units not to be used for temporary heat or ventilation during construction.
- Damper blade constructed of two layers of galvanized steel with a sandwiched peripheral gasket.
- 1/2" (13) diameter zinc coated damper shaft with position indicator.

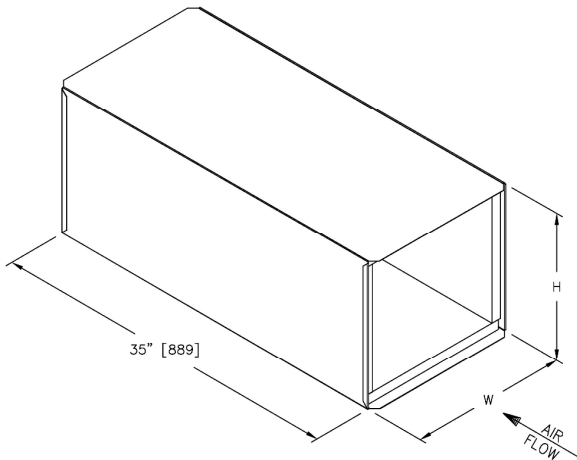
Insulation: FG50

- Internal Insulation – Fiberglass 1/2" (13mm) thick, 1.75 lb/cu.ft density, meets requirements of NFPA90A and UL 181.
- R-Value=2.1



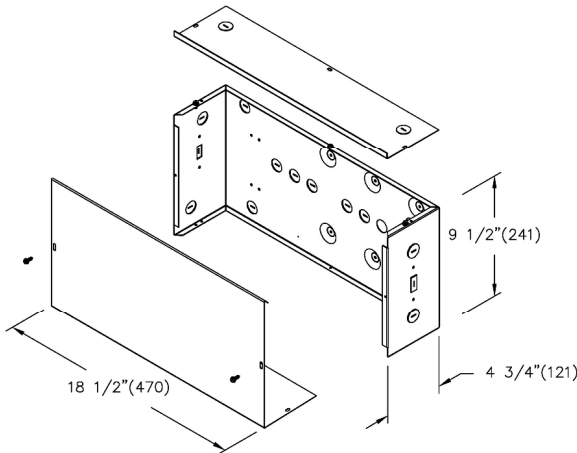
Attenuator: ATTSP

3FT Separate

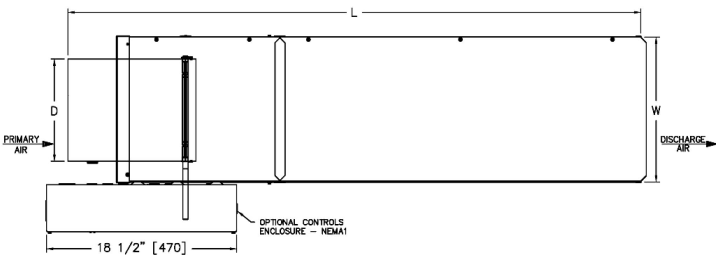


Unit Size	W	H
7	12	10

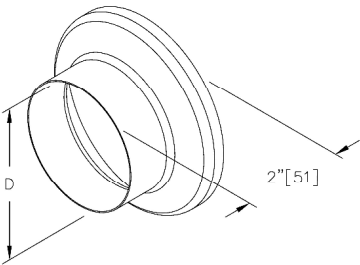
Protective Shroud



SDV Single Duct w/ 3ft Attenuator



Inlet Diameter Reducer Detail

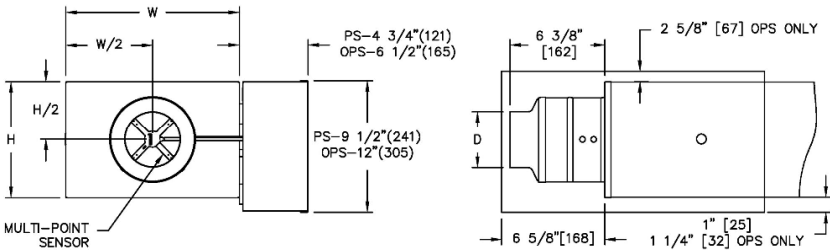


Size 4 and 5 have a 6" diameter duct with inlet reducer as shown

Inlet Reducer Dimensions	
Unit Size	D
4	3 7/8

Unit Size	Casing Size	Inlet	Casing		Length
		D	W	H	L
4	6	3 7/8	12	8	57 1/8

Controls Type



- Multi-point, center averaging airflow sensor.
- Controls enclosure will be supplied as illustrated on right hand side.
- Controls are supplied by controls contractor and field installed.
- PS - NEMA 1 controls enclosure included.
- Standard NEMA 1 controls enclosure mounting position.
- Pressure independent

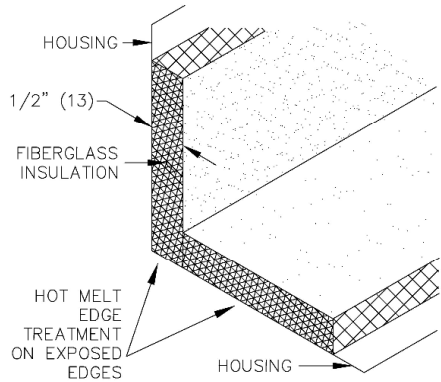
Notes

- 22 Gauge zinc coated steel housing. Mechanically sealed, leak resistant construction.
- Rectangular discharge opening with slip and drive cleat duct connection.
- Assembly ETL certified to UL50.
- Units not to be used for temporary heat or ventilation during construction.
- Damper blade constructed of two layers of galvanized steel with a sandwiched peripheral gasket.
- 1/2" (13) diameter zinc coated damper shaft with position indicator.



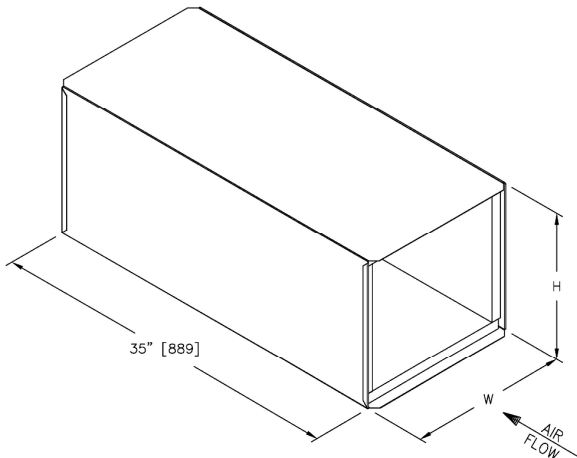
Insulation: FG50

- Internal Insulation – Fiberglass 1/2" (13mm) thick, 1.75 lb/cu.ft density, meets requirements of NFPA90A and UL 181.
- R-Value=2.1



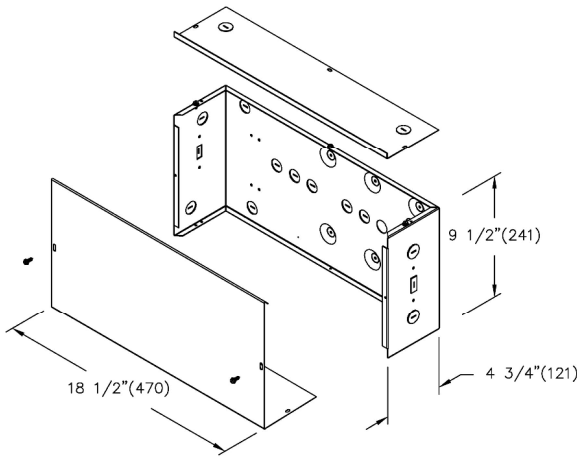
Attenuator: ATTSP

3FT Separate



Unit Size	W	H
4	12	8

Protective Shroud



PROJECT: TECUMSEH	SUBMITTAL NO: 275707	SUBMITTAL DATE: 11/8/2024
ENGINEER:	CUSTOMER:	
DESCRIPTION: Single Duct Variable Volume		
SDV-2-1//1/4/CRH/SP300/FLD/FG50///ATTSP//CFM/22GA/PS/STD////////0.00////////0.0////////60/400/60/400/0////////2000		