

384 Adelaide Street West, Suite 100
Toronto, ON M5V 1R7

t: 416 862 8800

1050 West Pender Street, Suite 2010
Vancouver, BC V6E 3S7

t: 604 674 0866

1776 Broadway, Suite 2200
New York, NY 10019

t: 212 710 4329

www.dsai.ca
info@dsai.ca

To:	Rafat General Contractor Inc.	Submittal No:	017R1
	8850 George Bolton Parkway	Project No:	201014
	Caledon, ON L7E 2Y4	File No:	4-6-22
Attention:	Pino Antelope, Bashar Mikha	Date:	January-17-24

Project: **Chris Gibson Recreation Centre**

The Architect's review is for the sole purpose of ascertaining conformance with the general design concept and for general arrangement. This review shall not mean approval of the detail design inherent in the shop drawings, responsibility for which shall remain with the Contractor and such review shall not relieve the Contractor of his responsibility for errors or omissions in the shop drawings or of his responsibility for meeting all requirements of the Contract Documents. The Contractor is responsible for all dimensions to be confirmed and correlated at the job site, for information that pertains solely to the fabrication processes, quantities or to techniques of construction and installation and for co-ordination with related work.

Contractor Package #	Spec Section	Description	Reviewed by	Status
017R1	22 40 00	Plumbing Fixtures Package 1	DSA	RN

Status Legend: **R** – Reviewed **RN** – Reviewed As Noted **RR** – Revise and Resubmit **N** – Not Reviewed

Comments: Reviewed for Architectural intent and colour selections. Refer to Mechanical Consultant's review comments throughout Submittal.

Per: Patrick Johnson



RAFAT

8850 GEORGE BOLTON PARKWAY, CALEDON, ONTARIO L7E 2Y4

**Shop Drawings
Transmittal No:**

Project Name:	Renovation of Chris Gibson Recreation Centre Drive	Project No.	T2023-125
		DATE:	
		Submittal Required Return Date:	
Submittal No:			

Title:	
---------------	--

To:	Patrick Johnson Contract Administrator Halima Namugga Admin Project Coordinator 384 Adelaide Street West, Suite 100 Toronto, Ontario, Canada M5V 1R7 PJohnson@dsai.ca
------------	---


Checked by:	Hasan Zaidi (Rafat General Contractor Inc/Corebuild)	To Be Reviewed By the Following Consultants	
--------------------	---	--	--

Submitted for:	REVIEW
-----------------------	--------

Consultants Response	
---------------------------------	--

Plumbing fixture package
re-submitted to address the
comments on the shop drawings
plumbing fixture 1 (Transmittal
No# 17). Rafat

RAFAT	
SUBMITTAL REVIEW	
For general compliance with the design concept and contract documents. Subcontractor is solely responsible for jobsite correlation and correctness of all ratings, usings, type, style, dimensions, finish, quantities and satisfactory fitting to other work and equipment. This review does not change the intent of the contract document.	
<input checked="" type="checkbox"/> Reviewed	Per:
<input type="checkbox"/> Make Corrections	HasanZaidi
<input type="checkbox"/> Resubmit	Date:
<input type="checkbox"/> Rejected	18-Dec-2023

SUBMITTAL REVIEW	
INTROBA 380 Wellington Street West Toronto, ON M5V 1E3	
	
<input type="checkbox"/> REVIEWED	
<input checked="" type="checkbox"/> REVIEWED AS NOTED	
<input type="checkbox"/> REJECTED - REVISE AND RESUBMIT	
<input type="checkbox"/> NOT REVIEWED	
CHECKED BY: ILITTLE	
DISCIPLINE: M&E	
DATE: 1/2/2024	
REVIEWED FOR GENERAL DESIGN AND COMPLIANCE WITH CONTRACT DOCUMENTS. DIMENSIONS AND SUITABILITY FOR SITE CONDITIONS ARE THE RESPONSIBILITY OF THE CONTRACTOR. THIS REVIEW OF THE DRAWING SHALL NOT RELIEVE THE CONTRACTOR FROM COMPLYING WITH THE CONDITIONS OF THE CONTRACT DOCUMENTS.	

IRB Comments:
- Refer to comments below on shop drawing.
- Architect to confirm finishes.



200 Tesma Way,
Concord, ON, L4K 5C2
(905) 738-1400

Submittal Package 23-214 - 018

Dec 15, 2023

PROJECT NAME

23-214 CHRIS GIBSON REC CENTRE

PROJECT NUMBER

23-214

PROJECT ADDRESS

125 McLaughlin Rd N, Brampton, ON, L6X 1N9

DUE DATE

Dec 29, 2023

To

NAME

Hassan Zaid

COMPANY

RAFAT GENERAL CON-
TRACTOR INC.

EMAIL

hzaidi@corebuildconstruction.com

ADDRESS

8850 GEORGE BOLTON PKWY,
BOLTON, ON, L7E 2Y4

From

NAME

JOSHUA STEPHENSON

COMPANY

Consult Mechanical

EMAIL

josh.s@consultmechanical.com

ADDRESS

200 Tesma Way, Vaughan, ON, L4K 5C2

Subject

REVISED PLUMBING 1

Notes

PLUMBING REVISION 1

- Clean out (new submission item)
- KS-1 revised
- LAV 4 revised
- UR-1 revised

Please note that Introba's comment for WC-1, WC-2 & WC-3 was to resubmit a single flush, 4.0 litre per flush, WaterSense certified flushvalve. Sloan makes a ECOS 8111 with 4.2lpf but it is battery powered only. Please advise on what model flushvalve consultant requests

Package Items

Spec	Subsection	Description	IRB: Acceptable manufacturer options to Meet LEED requirements.	Type
Mechanical	Plumbing	LAV-4, REVISION 1		Shop Drawings
Mechanical	Plumbing	KS-1, REVISION 1		Shop Drawings
Mechanical	Plumbing	UR-1, REVISION 1		Shop Drawings
Mechanical	Plumbing	Clean out		Shop Drawings

Brand Name	Model Name	Model Number	Product Type	Flush Volume (lpf)	WaterSense Certified
American Standard	AFWALL	3351101.XXX	Flushometer Valve	3.8	Yes
American Standard	MADERA	3451001.XXX	Flushometer Valve	3.8	Yes
American Standard	MADERA	3461001.XXX	Flushometer Valve	3.8	Yes
F.V.-Area Andina S.A	Fluxometro para Inodoro 1 GPF (3,8 lt/descarga)	E365.22.4 CR	Flushometer Valve	3.8	Yes
Kohler	Mach	K-80TM00K10	Flushometer Valve	3.8	Yes
Kohler	Mach Tripoint	K-10TD00K10	Flushometer Valve	3.8	Yes
Kohler	Mach Tripoint	K-10TH00K10	Flushometer Valve	3.8	Yes
Kohler	Mach Wave	K-40TD00K10	Flushometer Valve	3.8	Yes
Kohler	Mach Wave	K-40TH00K10	Flushometer Valve	3.8	Yes
Toto	EcoPower	TET1UA*****	Flushometer Valve	3.8	Yes

Toto	EcoPower	TET1UB*****	Flushometer Valve	3.8	Yes
Toto	EcoPower	TET2UA*****	Flushometer Valve	3.8	Yes
Toto	EcoPower	TET2UAX***	Flushometer Valve	3.8	Yes
Toto	EcoPower	TET2UB*****	Flushometer Valve	3.8	Yes
Toto	EcoPower	TET3UA*****	Flushometer Valve	3.8	Yes
Toto	EcoPower	TET3UAX***	Flushometer Valve	3.8	Yes
Toto	EcoPower	TET3UB*****	Flushometer Valve	3.8	Yes
Toto	EcoPower	TET6UA*****	Flushometer Valve	3.8	Yes
Toto	EcoPower	TET6UAX***	Flushometer Valve	3.8	Yes
Toto	EcoPower	TET6UB*****	Flushometer Valve	3.8	Yes



200 Tesma Way,
Concord, ON, L4K 5C2
(905) 738-1400

Submittal Item Information

Dec 15, 2023

Spec Section

Mechanical

Sub Section

Plumbing

Type

Shop Drawings

Description

Clean out

Notes

Round, Nickel Bronze Top

Engineering Specification

Job Name _____

Contractor _____

Job Location _____

Approval _____

Engineer _____

Contractor's P.O. No. _____

Approval _____

Representative _____

Tag _____

CO-200-R

Floor Cleanout with Round Top

Specification

Watts CO-200-R epoxy coated cast iron floor cleanout with 5"(127) round adjustable gasketed nickel bronze top, removable gas tight gasketed brass cleanout plug, and no hub (standard) outlet.

Pipe Sizing (Select One)		
Suffix	Description	
2	2"(51) Pipe Size	<input type="checkbox"/>
3	3"(76) Pipe Size	<input type="checkbox"/>
4	4"(102) Pipe Size	<input type="checkbox"/>

Outlet Type (Select One)		
Suffix	Description	
NH	No Hub (MJ)	<input type="checkbox"/>
P	Push On	<input type="checkbox"/>
X	Inside Caulk	<input type="checkbox"/>

Options (Select One)		
Suffix	Description	
-C	Membrane Clamp	<input type="checkbox"/>
-6	Vandal Proof	<input checked="" type="checkbox"/>
-13	Galvanized Body	<input type="checkbox"/>
-CF	Carpet Clamping Flange	<input type="checkbox"/>
-SO	Side Outlet	<input type="checkbox"/>

Optional Body Material (NH Only)		
Suffix	Description	
-60	PVC Body w/Poly Plug	<input type="checkbox"/>
-61	ABS Body w/Poly Plug	<input checked="" type="checkbox"/>

Load Rating
MD

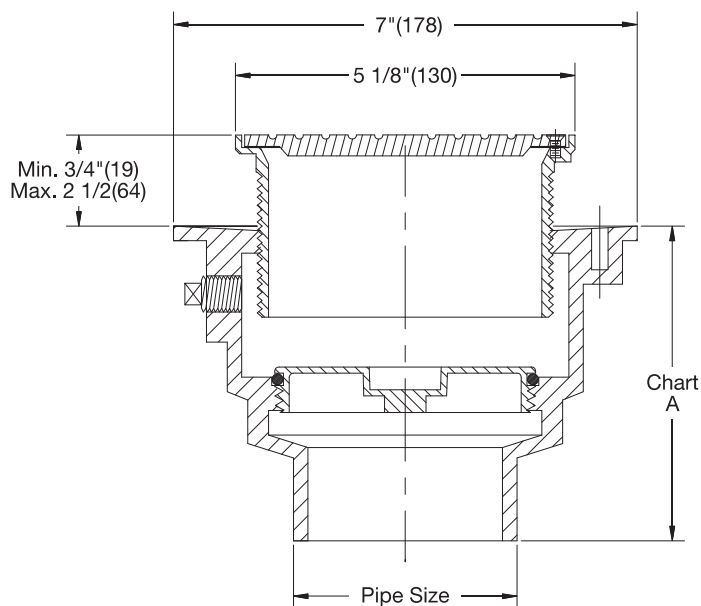


Chart A

Pipe Size	NH	Push-On	PVC/ABS
2"(51)	4 3/4"(121)	5 1/2"(140)	4"(102)
3"(76)	4 3/4"(121)	5 1/2"(140)	4"(102)
4"(102)	4 3/4"(121)	5 1/2"(140)	4"(102)

NOTICE

The load classifications are in accordance with the American National Standards ASME A112.36.2M-91(R2012) ASME Ratings are as follows:
MD - Safe Live Load 2000-4999 lbs. (900-2250 kg)
The above categories are given as a guide only.
Please consult factory.

NOTICE

The information contained herein is not intended to replace the full product installation and safety information available or the experience of a trained product installer. You are required to thoroughly read all installation instructions and product safety information before beginning the installation of this product.

Watts product specifications in U.S. customary units and metric are approximate and are provided for reference only. For precise measurements, please contact Watts Technical Service. Watts reserves the right to change or modify product design, construction, specifications, or materials without prior notice and without incurring any obligation to make such changes and modifications on Watts products previously or subsequently sold.



USA: T: (800) 338-2581 • F: (828) 248-3929 • Watts.com

Canada: T: (888) 208-8927 • F: (905) 481-2316 • Watts.ca

Latin America: T: (52) 55-4122-0138 • Watts.com

ES-WD-CO-200-R 2205

© 2022 Watts



200 Tesma Way,
Concord, ON, L4K 5C2
(905) 738-1400

Submittal Item Information

Dec 15, 2023

Spec Section

Mechanical

Sub Section

Plumbing

Type

Shop Drawings

Description

UR-1, REVISION 1



Maybrook®
Universal Urinal
 VITREOUS CHINA

Maybrook® Universal Washuot Urinal

- Vitreous china
- Ultra High Efficiency, Low Consumption. Operates in the range of 0.125 gpf to 1.0 gpf (0.5 Lpf to 3.8 Lpf)
- Flushing rim
- Washout flush action
- Integral strainer
- 3/4" inlet spud
- Outlet spud with 1-1/2" tubing tailpiece
- Wall hanger
- Fixture only
- Meets ANSI flush requirements at 0.125 to 1.0 gpf

✓ **6581.001 Top spud**

Nominal Dimensions:

324 x 324 x 457mm
 (12-3/4" x 12-3/4" x 18")

Recommended working pressure – between
 20 psi at valve when flushing and 80 psi static

Compliance Certifications -

Meets or Exceeds the Following Specifications:

- ASME A112.19.2/CSA B45.1 for Vitreous China Fixtures



SEE REVERSE FOR ROUGHING-IN DIMENSIONS

To Be Specified:

✓ ☒ **Color:** ☐ White

☐ Flush Valve:

1.0 gpf Flush Valve: Sensor-Operated:

- ☐ American Standard Selectronic® #6063.101.002 DC Power (Top Spud)
- ☐ American Standard Selectronic® #6062.101.002 AC Power (Back Spud)

1.0 gpf Flush Valve: Manual-Operated:

- ☐ American Standard # 6045.101.002

0.5 gpf Flush Valve: Sensor-Operated:

- ☐ American Standard Selectronic® #6063.051.002 DC Power (Top Spud)
- ☐ American Standard Selectronic® #6062.051.002 AC Power (Back Spud)

0.5 gpf Flush Valve: Manual-Operated:

- ☐ American Standard #6045.051.002

0.125 gpf Flush Valve: Sensor-Operated:

- ☐ American Standard Selectronic® #6063.013.002 DC Power (Top Spud)
- ☐ American Standard Selectronic® #6062.013.002 AC Power (Back Spud)

0.125 gpf Flush Valve: Manual-Operated:

- ☐ American Standard #6045.013.002

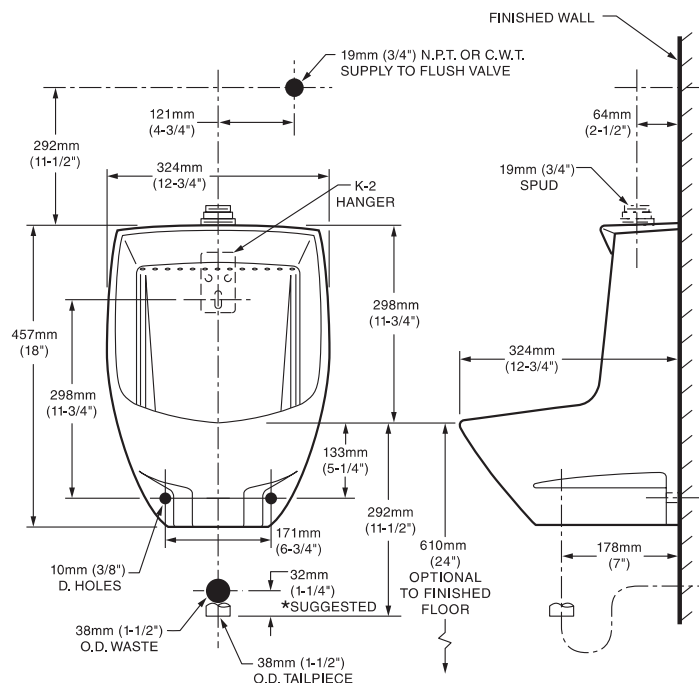
☐ "P" Trap:



When used with
 0.125 gpf
 urinal flush valve

When used with
 0.125 or 0.5 gpf
 urinal flush valve

6581.001 TOP SPUD

**NOTES:**

* DIMENSIONS SHOWN FOR LOCATION OF "P" TRAP IS SUGGESTED.
 "P" TRAP AND FLUSH VALVE NOT INCLUDED AND MUST BE ORDERED SEPARATELY.
 PROVIDE SUITABLE REINFORCEMENT FOR ALL WALL SUPPORTS.

IMPORTANT: Dimensions of fixtures are nominal and may vary within the range of tolerances established by ANSI Standard A112.19.2. These measurements are subject to change or cancellation. No responsibility is assumed for use of superseded or voided pages.

CODE NUMBER

3370440

DESCRIPTION

0.125 gpf, Dual-Filtered Bypass, Polished Chrome Finish, 0.75 Flush Connection, Fixture Connection Top Spud, Single Flush, 3/4" Control Stop, Electrical Override, Hardwired, Infrared, ECOS® Exposed Sensor Hardwired Urinal Flushometer.

DETAILS

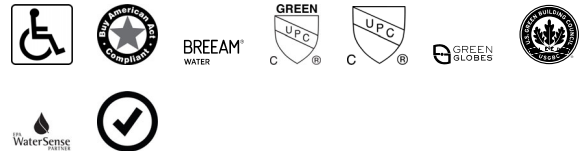
- Flush Volume: 0.125 gpf (0.5 Lpf)
- Finish: Polished Chrome (CP)
- Power Type: Hardwired
- Valve: Diaphragm
- Bypass: Dual-Filtered Bypass
- Valve Body Material: Semi-red Brass
- Fixture Type: Urinal
- Fixture Connection: Top Spud
- Rough-In Dimension: 11 1/2" (292mm)
- Spud Coupling: 3/4" (19mm)
- Supply Pipe: 3/4" (19mm)
- Override: Electrical
- Control Stop: 3/4"
- Flush Connection: 0.75

FEATURES

- Includes 18" electrical cable
- Sweat solder adapter with cover tube and cast wall flange with set screw
- Stop Seat and Vacuum Breaker Molded from PERMEX® Rubber Compound for Chloramine resistance
- Infrared Sensor with Multiple-focused, Lobular Sensing Fields for high and low target detection
- Fixed Metering Bypass and No External Volume Adjustment to Ensure Water Conservation
- Flex Tube Diaphragm designed for improved life and reduced maintenance
- Engineered Metal Cover with replaceable Lens Window
- Line Powered with 6 VAC Step Down Transformer
- 3/4" I.P.S. Screwdriver Bak-Chek® Angle Stop
- Free Spinning, Vandal Resistant Stop Cap
- ADA Compliant Sloan® ECOS® Electronic Infrared Sensor for automatic "No Hands" operation
- Courtesy Flush® Override Button
- Accessories (Sold Separately) EL-386 Transformer Plug-In (120 VAC/6 VAC)

EL-451 Transformer Box-Mount (120 VAC/6 VAC 25VA)

See Accessories Section and Sloan ECOS® accessories section of the Sloan catalog for details on these and other Sloan ECOS® flushometer variations.

**COMPLIANCES & CERTIFICATIONS**

(ADA Compliant, BAA Compliant, BREEAM Water Credit, cUPC Green Certified, cUPC Certified, Green Globes Water Credit, LEED V4 Water Efficiency Credit, WaterSense Listed, Satisfies LEED Credits)

RECOMMENDED SPECIFICATION

Valve Body, Cover, Tailpiece and Control Stop shall be in conformance with ASTM Alloy Classification for Semi- Red Brass. Valve shall be in compliance with the applicable sections of ASSE 1037 and ANSI/ASME 112.19.2.

ELECTRICAL SPECIFICATIONS

- Arming Delay: 8 seconds
- Flush Delay: 1s
- Sensor Range: 15"-30" (381-762mm)
- Solenoid Operator: 6 VAC
- Transformers (specify separately):
 - EL-386 (Up to 1 flushometer)
 - EL-451 (up to 6 flushometers)

VALVE OPERATING PRESSURE (FLOWING)

15-80 PSI (103-552 kPa). Specific fixtures may require greater minimum flowing pressure - consult manufacturer requirements.

DOWNLOADS

- [ECOS Single Flush HW Flushometer and Retrofit](#)
- [ECOS HW Repair and Maintenance Guide](#)
- [Control Stop Repair and Maintenance Guide](#)
- [Flush Connections Flanges Repair and Maintenance Guide](#)
- [Tail Piece Repair and Maintenance Guide](#)
- [Additional Downloads](#)

Sloan 10500 Seymour Ave, Franklin Park, IL 60131

Phone: 800.982.5839 • Fax: 800.447.8329 • sloan.com

NOTES

All information contained within this document subject to change without notice.

Looking for other variations of the ECOS 186 HW product? [View the general spec sheet with all options.](#)

[Find a compatible urinal](#) for this flushometer.

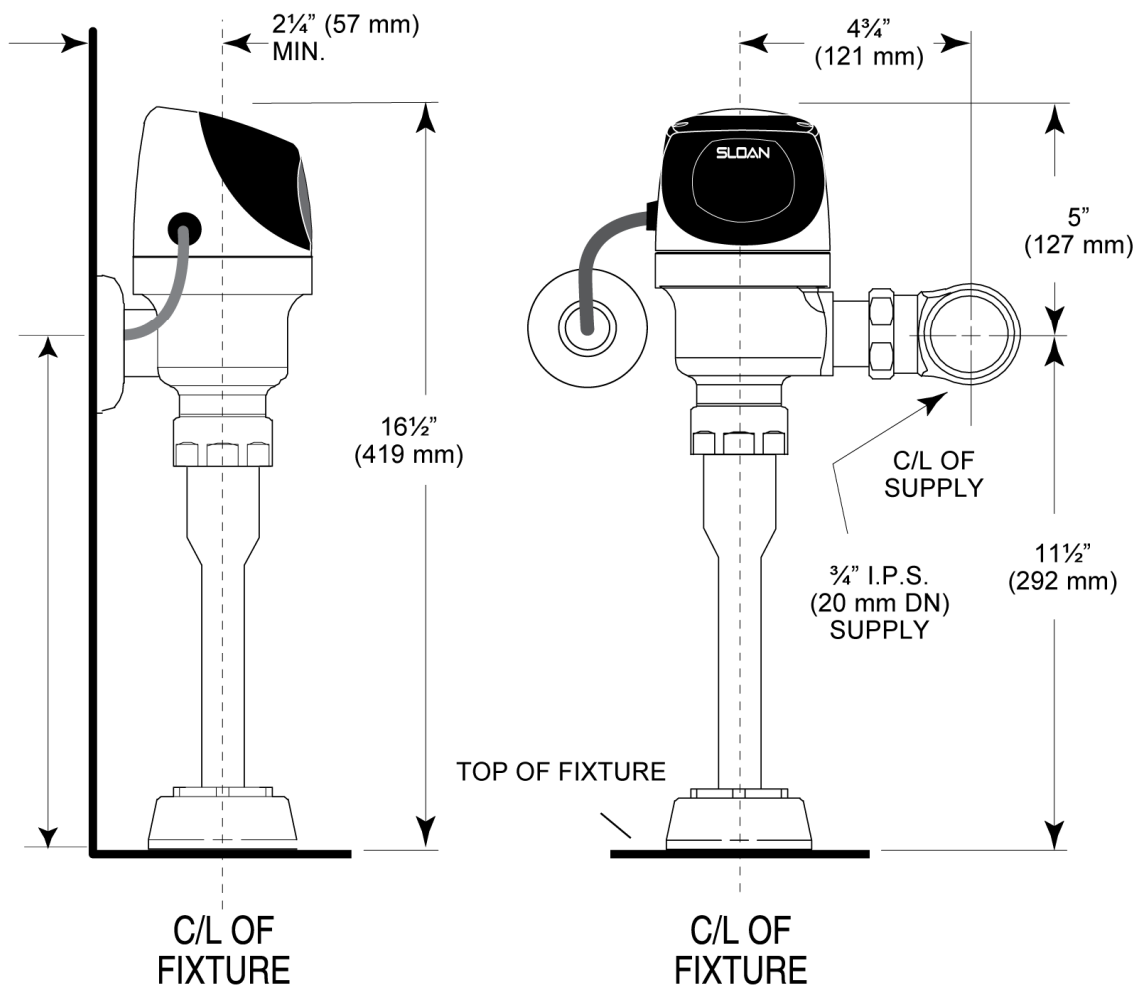
[Find a compatible water closet](#) for this flushometer.

WaterSense compliant when used with a WaterSense compliant fixture

WARRANTY

[View Warranty Information](#)

ROUGH-IN



Sloan 10500 Seymour Ave, Franklin Park, IL 60131

Phone: 800.982.5839 • Fax: 800.447.8329 • sloan.com



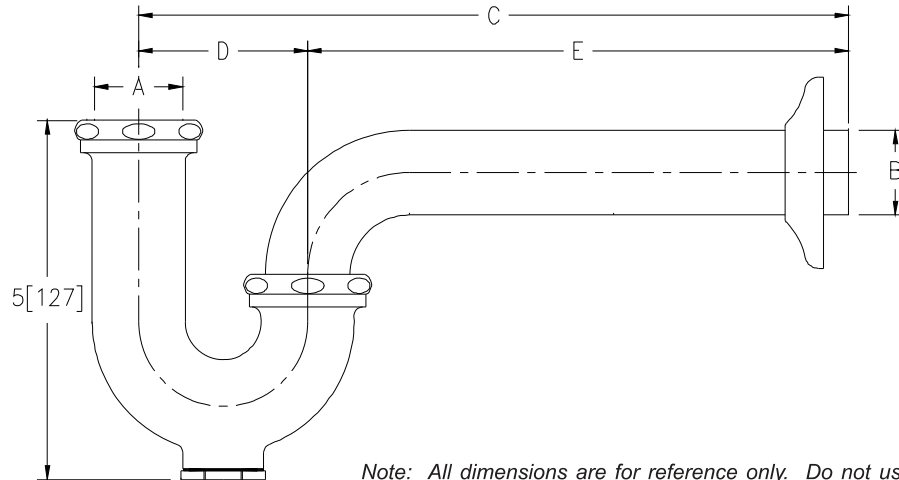
SEMI-CAST P-TRAPS WITH WALL BEND

Z8700-PC TO Z8708-PC

TAG



Engineering Specification: Zurn Z8700-PC to Z8708-PC. – Chrome-plated cast brass (copper alloy) body P-trap with cleanout, tubular brass wall bend as specified, die-cast nuts, and shallow escutcheon with compression inlet.



Note: All dimensions are for reference only. Do not use for pre-plumbing.

PRODUCT NUMBER	A INLET in[mm]	B OUTLET in[mm]	GAUGE	DIMENSIONS			MASTER CARTON	WEIGHT CARTON [lbs]
				C in[mm]	D in[mm]	E in[mm]		
✓ Z8700-PC	1 1/4[32]	1 1/4[32]	17	10[254]	2 1/2[64]	7 1/2[191]	12	24
Z8700-8-PC	1 1/4[32]	1 1/4[32]	17	11[279]	2 1/2[64]	8 1/2[216]	12	24
Z8700-15-PC	1 1/4[32]	1 1/4[32]	17	15[381]	2 1/2[64]	12 1/2[318]	18	40
Z8701-PC	1 1/4[32]	1 1/2[38]	17	10 1/2[267]	3[76]	7 1/2[191]	12	24
Z8701-9-PC	1 1/4[32]	1 1/2[38]	17	12[305]	3[76]	9[229]	12	24
Z8701-15-PC	1 1/4[32]	1 1/2[38]	17	15[381]	3[76]	12[305]	18	42
Z8702-PC*	1 1/2[38]	1 1/2[38]	17	10 1/2[267]	3[76]	7 1/2[191]	12	24
Z8702-9-PC*	1 1/2[38]	1 1/2[38]	17	12[305]	3[76]	9[229]	12	24
Z8702-15-PC*	1 1/2[38]	1 1/2[38]	17	15[381]	3[76]	12[305]	18	42
Z8703B-PC**	1 1/2[38]	2[51]	17	12 1/2[318]	3 1/2[89]	9[229]	6	18
Z8704B-PC**	2[51]	2[51]	17	12 1/2[318]	3 1/2[89]	9[229]	6	18
Z8706-PC	1 1/4[32]	1 1/4[32]	20	10[254]	2 1/2[64]	7 1/2[191]	12	24
Z8707-PC	1 1/4[32]	1 1/2[38]	20	10 1/2[267]	3[76]	7 1/2[191]	12	24
Z8708-PC*	1 1/2[38]	1 1/2[38]	20	10 1/2[267]	3[76]	7 1/2[191]	12	24

OPTIONAL ACCESSORIES

Suffix	Description
✓ -B	Brass Nuts
___ -BX	Box Escutcheon
___ -CE	Cast Brass Escutcheon with Setscrew
✓ -D	Deep Escutcheon (Note = not available for Z8703B-PC and Z8704B-PC)
___ -J	Metal to Metal Ground Joint Connection
___ -WC	Waste Connections - Compression
___ -15	15[381] C Dim. 1 1/4[32] and 1 1/2[38] Only
___ -18	18[457] C Dim. 1 1/4[32] and 1 1/2[38] Only

* COMES WITH OPTIONAL 1-1/2" x 1-1/4" REDUCTION POLY-WASHER FOR INLET

** SHIPPED WITH BRASS NUTS UNLESS OTHERWISE SPECIFIED

ZURN INDUSTRIES, LLC ♦ COMMERCIAL BRASS OPERATION ♦ 2640 SOUTH WORK STREET ♦ FALCONER NY 14733

Phone: 1-800-997-3876 ♦ Fax: 1-919-775-3541 ♦ www.zurn.com

In Canada: ZURN INDUSTRIES LIMITED ♦ 3544 Nashua Drive ♦ Mississauga, Ontario L4V1L2 ♦ Phone: 905/405-8272 Fax: 905/405-1292

SLOAN®

OPTIMA ACCESSORIES

Optima® Systems Transformers

Description

Sloan offers a wide range of 24 VAC step down transformers for use with Sloan Optima® flushometers and faucets. All Sloan transformers are Class II, UL Listed.

Optima® Flushometers

When using Sloan Optima® "ES-S" flushometers, the transformer must be specified and ordered separately. The following two (2) transformers are recommended:

☐ **EL-154** (Box Mount) 120 VAC Input/24 VAC Output, 50/60 Hz, 50 VA

☐ **EL-342** (Box Mount) 240 VAC Input/24 VAC Output, 50/60 Hz, 50 VA

☒ **EL-451** (Box Mount) 120 VAC Input/6 VAC Output, 50/60 Hz, 25 VA

☐ **EL-208** (Foot Mount) 120 VAC Input/24 VAC Output, 50/60 Hz, 100 VA

☐ **EL-386** (Plug-in) 120 VAC Input/6 VAC Output, 50/60 Hz, 1/2 Amp

One EL-154 or EL-342 transformer will power up to ten (10) OPTIMA "ES-S" water closet or urinal (any combination) flushometers.

Optima® Faucets

When using Sloan Optima® ETF or ESF Series faucets, the transformer must be specified and ordered separately. Sloan Optima® ETF Series faucets are typically supplied with a transformer. Transformers supplied with ETF Series faucets:

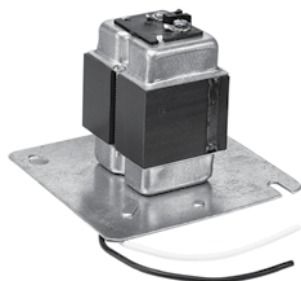
☐ **ETF-233** (Plug-in) 120 VAC Input/24 VAC Output, 50/60 Hz, 35 VA

☐ **ETF-416** (Plug-in - for Canada) 120 VAC Input/24 VAC Output, 50/60 Hz, 35 VA

☐ **EL-248-40** (Box/Foot Mount) 120 VAC Input/24 VAC Output, 50/60 Hz, 40 VA

Some Optima® faucet installations can be powered by a single transformer, provided the transformer is properly sized. Allow a minimum of 15 VA of current rating for each faucet or solenoid valve being used. Specify and order the transformer separately. To order an "ETF" Series faucet less the transformer, specify the "LT" Variation.

For assistance in determining Transformer needs,
contact Sloan at: 1-800-982-5839.



EL-154



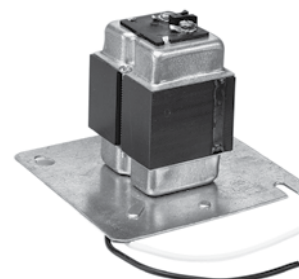
EL-208



EL-451



ETF-233
(in Canada use ETF-416)



EL-342



EL-248-40
(3 installation options)



EL-386

This space for Architect/Engineer approval

Job Name _____ Date _____

Model Specified _____ Quantity _____

Variations Specified _____

Customer/Wholesaler _____

Contractor _____

Architect _____



200 Tesma Way,
Concord, ON, L4K 5C2
(905) 738-1400

Submittal Item Information

Dec 15, 2023

Spec Section

Mechanical

Sub Section

Plumbing

Type

Shop Drawings

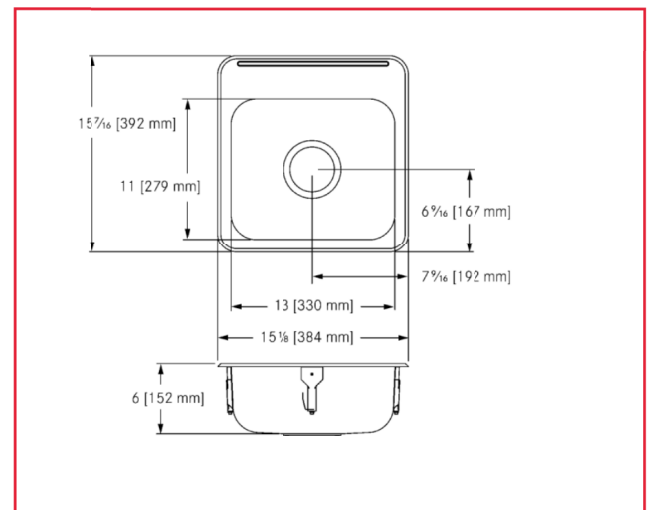
Description

KS-1, REVISION 1

ALBS1306P-1 Single, with ledge, 18 gauge

MODEL RANGE: COMMERCIAL SINKS | **ALBS1306P-1**

Commercial sinks | Topmount sinks



Single compartment, self rimming topmount sink with faucet ledge. 18 gauge (1.2 mm), type 304 (CNS 18/10) stainless steel. Exposed surfaces are #4 satin finished. Undercoated to reduce condensation and resonance. Includes waste fitting, factory applied rim seal, cutout template, and factory installed EZ TORQUE™ fasteners. Certified to ASME A112.19.3-2008 / CSA B45.4-08.

Wheelchair accessible: meets ADA (Americans with disabilities act guidelines) and ANSI A117.1 (Accessible and usable buildings and facilities). Check local codes to ensure compliance.

Centre waste location. Includes 3 1/2" (89 mm) crumb cup strainer with 1 1/2" (DN38) brass tailpiece.

Model Options:

ALBS1306P-1/1, 1 faucet hole, 1 1/2" diameter

ALBS1306P-1/2, 2 faucet holes, 1 1/2" diameter, 4" centres

ALBS1306P-1, Custom (non-returnable)

15 7/16 x 15 1/8" Overall. 11 x 13 x 6" Bowl. (FB x LR x D).

392 x 384 mm Overall. 279 x 330 x 152 mm Bowl. (FB x LR x D).

Technical data

Bowl height	6 inch
Bowl width	11 "
Bowl depth	13 "
Overall depth	15 7/16 "
Overall width	15 1/8 "
Material	Stainless steel
Material code	1.4301 Chrome Nickel steel V2A
Tailor made	No
Tap ledge	Yes
Type of mounting	Inset mounting
Waste hole position	Center
Bowl finish	Satin finish
Number of bowls	1.00000
Overflow	No
Type of waste kit	CRUMP-CUP
Type of basin	Single compartment

PROJECT INFORMATION

Item Location

Project Number

Quote Number

Notes

ENGINEER'S APPROVAL



7500.175 Shown

MODEL NUMBER:*



7500.175 Centerset Lavatory

0.5 gpm Pressure Compensating Vandal-Resistant Multi-Laminar Spray. Rigid/swivel gooseneck spout. Vandal-Resistant Wrist Blade handles. Less drain and pop-up hole.



7502.175 Centerset Lavatory

0.5 gpm Pressure Compensating Vandal-Resistant Multi-Laminar Spray. Rigid/swivel gooseneck spout. Vandal-Resistant Wrist Blade handles. Grid strainer drain.



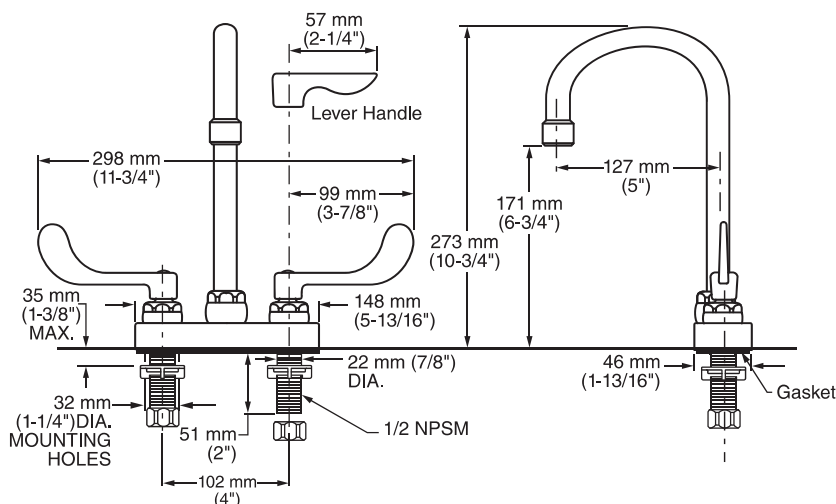
7500.145 Centerset Lavatory

0.5 gpm Pressure Compensating Vandal-Resistant Multi-Laminar Spray. Rigid/swivel gooseneck spout. Vandal-Resistant Lever handles. Less drain and pop-up hole.



7502.145 Centerset Lavatory

0.5 gpm Pressure Compensating Vandal-Resistant Multi-Laminar Spray. Rigid/swivel gooseneck spout. Vandal-Resistant Lever handles. Grid strainer drain.



GENERAL DESCRIPTION:

Durable cast brass construction. 1/2" male threaded inlet shanks with shank nuts and brass coupling nuts. 1/4 turn ceramic disc valve cartridges. Field-convertible rigid/swivel gooseneck spout. Choice of Vandal-Resistant Wrist Blade or Lever handles with blue & red color indexes. All brass drain body with 1 1/4" (32mm) tailpiece (on applicable models). 0.5 gpm/1.9L/min. maximum flow rate.

PRODUCT FEATURES:

Pressure Compensating Multi-Laminar Spray:

Provides a constant water flow of 0.5 gpm throughout the pressure range. No mix of air and water.

Solid Brass Construction: Durable - Excellent in high use applications. Ideal for prolonged contact with water.

Ceramic Disc Valve Cartridge: Assures a lifetime of drip-free performance.

Field-Convertible Rigid/Swivel Spout: Easily adjusted in the field.

Lead-Free: Faucet contains $\leq 0.25\%$ total lead content by weighted average.

SUGGESTED SPECIFICATION:

4" centerset lavatory faucet shall be cast brass construction with shank nuts and brass coupling nuts. Shall feature water-conserving vandal-resistant 0.5 gpm/1.9L/min. pressure compensating multi-laminar spray. Vandal-Resistant handles. Shall also feature 1/4 turn washerless ceramic disc valve cartridges. Fitting shall be American Standard Model # 750_1_5.002.



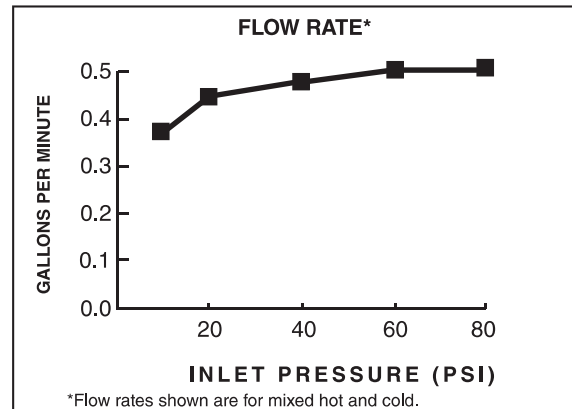
KS-1

MONTERREY® 0.5 GPM
TWO-HANDLE CENTERSET LAVATORY FAUCET
RIGID/SWIVEL GOOSENECK SPOUT WITH 5" REACH

CODES AND STANDARDS

These products meet or exceed the following codes and standards:

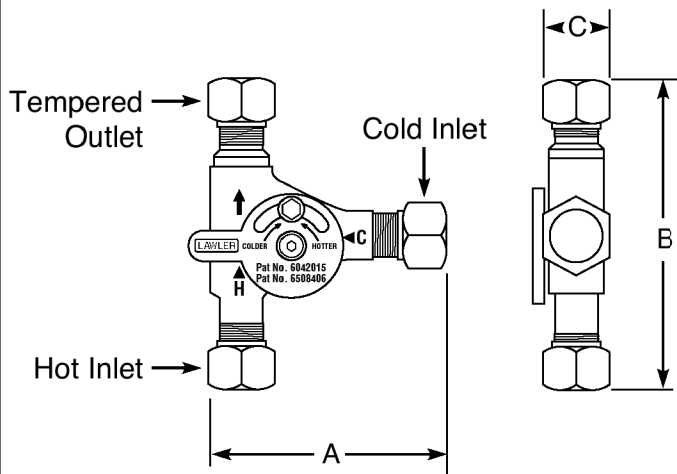
ANSI A117.1
ASME A112.18.1
CSA B 125
NSF 372



Product Number	Description	Finish
		Polished Chrome
		002
7500.175	Centerset Lavatory with rigid/swivel gooseneck spout. 0.5 gpm/1.9L/min pressure compensating vandal-resistant multi-laminar spray. Vandal-Resistant Wrist Blade Handles. Less drain and pop-up hole.	✓
7502.175	Centerset Lavatory with rigid/swivel gooseneck spout. 0.5 gpm/1.9L/min pressure compensating vandal-resistant multi-laminar spray. Vandal-Resistant Wrist Blade Handles. Grid strainer drain.	
7500.145	Centerset Lavatory with rigid/swivel gooseneck spout. 0.5 gpm/1.9L/min pressure compensating vandal-resistant multi-laminar spray. Vandal-Resistant Lever Handles. Less drain and pop-up hole.	
7502.145	Centerset Lavatory with rigid/swivel gooseneck spout. 0.5 gpm/1.9L/min pressure compensating vandal-resistant multi-laminar spray. Vandal-Resistant Lever Handles. Grid strainer drain.	

 **MEETS THE AMERICANS WITH DISABILITIES ACT GUIDELINES**
AND ANSI A117.1 REQUIREMENTS FOR ACCESSIBLE AND
USABLE BUILDING FACILITIES-CHECK LOCAL CODES

ENG. NO. 86800-B
 PAT. NO. 6,042,015.
 PAT. NO. 6,508,406.
 PAT. NO. 7,175,100.



Mechanical Mixing Valve with Thermostatic Limit Stop

Model TMM - 1070 Lead Free Unit No. 87500 ($\frac{3}{8}$ "



Inlets & Outlet are $\frac{3}{8}$ " compression fittings

Checks included within inlets

ASSE 1070 Approved

The point of use mixing valve shall be a mechanical mixing valve with a high temperature limit stop with automatic reset. The mixing valve shall have compression fittings and a means to adjust outlet temperature. Valve construction will include a bronze body and integral back flow checks. The mixing valve shall be Lawler model TMM-1070.

Specifications

- Hot water supply temperature: 140°F max.
- Water supply pressure (static): 125 psi max.
- **Flow rate @ 45 psl: 2.1 gal/minute min.**
- **Shut off temperature: 118°F +/-3°F.**
- **Min. operating pressure: 5 psl.**
- **Integral rubber duck-bill back-flow checks.**
- **Pressure must be equal between supplies.**

Benefits

- **Automatically shuts down flow of water when temperature reaches 120°F.**
- **Protects against scalding and chilling.**
- **Offers choice of temperature settings from full cold through 115°F.**
- **Easy Installation.**
- **Backed by Lawler's One Year Warranty.**

Engineer Approval ☐



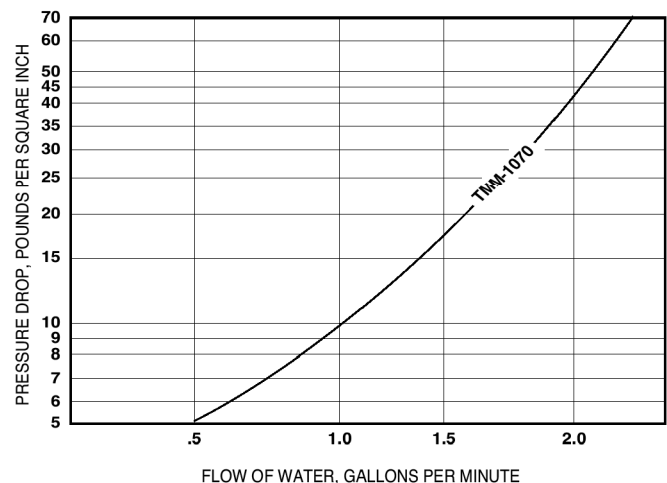
MANUFACTURING CO., INC.

5330 East 25th Street
 Indianapolis, Indiana 46218
 Phone (317) 261-1212
 Fax (317) 261-1208

DIMENSIONS:

Valve Number	A	B	C
TMM-1070	2 $\frac{1}{8}$ "	3 $\frac{5}{16}$ "	$\frac{7}{8}$ "

FLOW CAPACITIES SINGLE STAGE - MODEL TMM-1070



CAPACITIES - MODEL TMM-1070

Pressure Drop PSI	5	10	20	40
Valve Number	Capacity			
TMM-1070-GPM	.5	1	1.6	1.9
TMM-1070-LPM	1.8	3.7	6	7

Temperature Adjustment

The temperature adjusting dial is located on the cold inlet. Turning the dial clockwise will lower the outlet temperature, turning the dial counter-clockwise will raise it. The valve cannot be adjusted above its shut-off temperature of 120°F.

Note: For ASSE 1070 applications.

Design and specification subject to change without notice.



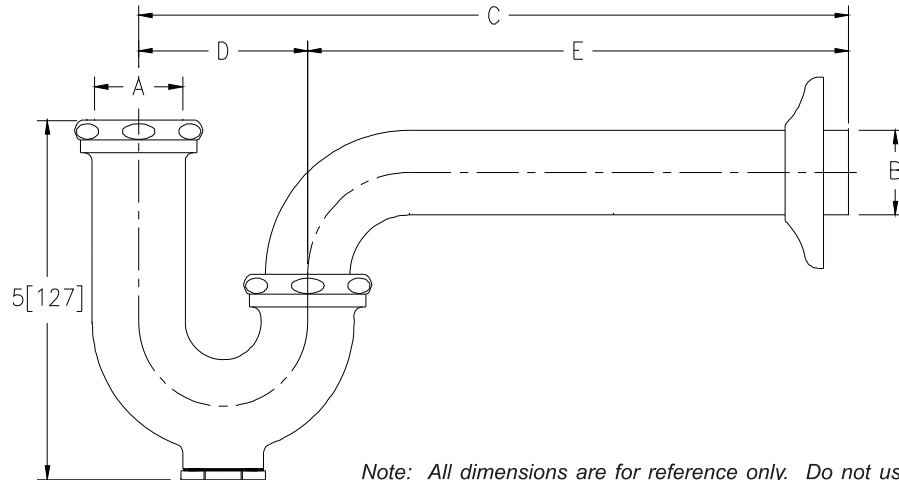
SEMI-CAST P-TRAPS WITH WALL BEND

Z8700-PC TO Z8708-PC

TAG



Engineering Specification: Zurn Z8700-PC to Z8708-PC. – Chrome-plated cast brass (copper alloy) body P-trap with cleanout, tubular brass wall bend as specified, die-cast nuts, and shallow escutcheon with compression inlet.



Note: All dimensions are for reference only. Do not use for pre-plumbing.

PRODUCT NUMBER	A INLET in[mm]	B OUTLET in[mm]	GAUGE	DIMENSIONS			MASTER CARTON	WEIGHT CARTON [lbs]
				C in[mm]	D in[mm]	E in[mm]		
Z8700-PC	1 1/4[32]	1 1/4[32]	17	10[254]	2 1/2[64]	7 1/2[191]	12	24
Z8700-8-PC	1 1/4[32]	1 1/4[32]	17	11[279]	2 1/2[64]	8 1/2[216]	12	24
Z8700-15-PC	1 1/4[32]	1 1/4[32]	17	15[381]	2 1/2[64]	12 1/2[318]	18	40
Z8701-PC	1 1/4[32]	1 1/2[38]	17	10 1/2[267]	3[76]	7 1/2[191]	12	24
Z8701-9-PC	1 1/4[32]	1 1/2[38]	17	12[305]	3[76]	9[229]	12	24
Z8701-15-PC	1 1/4[32]	1 1/2[38]	17	15[381]	3[76]	12[305]	18	42
Z8702-PC*	1 1/2[38]	1 1/2[38]	17	10 1/2[267]	3[76]	7 1/2[191]	12	24
Z8702-9-PC*	1 1/2[38]	1 1/2[38]	17	12[305]	3[76]	9[229]	12	24
Z8702-15-PC*	1 1/2[38]	1 1/2[38]	17	15[381]	3[76]	12[305]	18	42
Z8703B-PC**	1 1/2[38]	2[51]	17	12 1/2[318]	3 1/2[89]	9[229]	6	18
Z8704B-PC**	2[51]	2[51]	17	12 1/2[318]	3 1/2[89]	9[229]	6	18
Z8706-PC	1 1/4[32]	1 1/4[32]	20	10[254]	2 1/2[64]	7 1/2[191]	12	24
Z8707-PC	1 1/4[32]	1 1/2[38]	20	10 1/2[267]	3[76]	7 1/2[191]	12	24
Z8708-PC*	1 1/2[38]	1 1/2[38]	20	10 1/2[267]	3[76]	7 1/2[191]	12	24

OPTIONAL ACCESSORIES

Suffix	Description
✓ -B	Brass Nuts
___ -BX	Box Escutcheon
___ -CE	Cast Brass Escutcheon with Setscrew
✓ -D	Deep Escutcheon (Note = not available for Z8703B-PC and Z8704B-PC)
___ -J	Metal to Metal Ground Joint Connection
___ -WC	Waste Connections - Compression
___ -15	15[381] C Dim. 1 1/4[32] and 1 1/2[38] Only
___ -18	18[457] C Dim. 1 1/4[32] and 1 1/2[38] Only

* COMES WITH OPTIONAL 1-1/2" x 1-1/4" REDUCTION POLY-WASHER FOR INLET

** SHIPPED WITH BRASS NUTS UNLESS OTHERWISE SPECIFIED

ZURN INDUSTRIES, LLC ♦ COMMERCIAL BRASS OPERATION ♦ 2640 SOUTH WORK STREET ♦ FALCONER NY 14733

Phone: 1-800-997-3876 ♦ Fax: 1-919-775-3541 ♦ www.zurn.com

In Canada: ZURN INDUSTRIES LIMITED ♦ 3544 Nashua Drive ♦ Mississauga, Ontario L4V1L2 ♦ Phone: 905/405-8272 Fax: 905/405-1292



200 Tesma Way,
Concord, ON, L4K 5C2
(905) 738-1400

Submittal Item Information

Dec 15, 2023

Spec Section

Mechanical

Sub Section

Plumbing

Type

Shop Drawings

Description

LAV-4, REVISION 1

WALL HUNG BASIN

WHB2221-8

Wall Hung Basin. Designed for either new installation or for replacement / retrofit onto select vitreous china wall carriers. Center back waste location. 18 gauge (1.2 mm) type 304 (CNS18/10) stainless steel. Exposed surfaces are #4 satin finished. Radius coved bowl corners. Grid strainer and one piece wall hanger bracket included. The edge is formed as an anti spill rim. Certified to ASME A112.19.3-2008 / CSA B45.4-08. Available with optional shroud (WHB2221-RS) to cover the trap and water supplies. A third piece may be ordered for full under enclosure (WHB2221-UC). Model complies with ADA (Americans with disabilities act guidelines), ANSI A117.1 (Accessible and usable buildings and facilities), and CSA B651-04 (Accessible design for the built environment). Check local codes to ensure compliance.

with overflow

MODEL OPTIONS

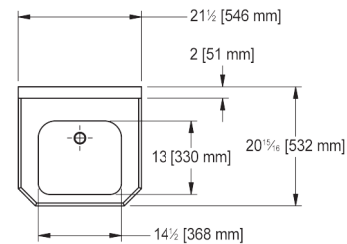
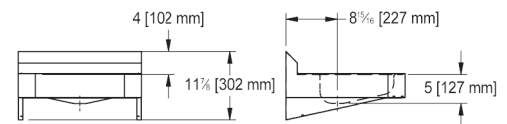
WHB2221-8/1, 1 hole 1 1/2" (38mm) diameter

WHB2221-8/3, 3 hole 1 1/4" (32mm) diameter, 4" (102mm) centreset

WHB2221-8, Custom (non-returnable), specify hole drilling

TECHNICAL DATA

Gross weight	7 kg
Waste size	DN 32
Faucet ledge	yes
Back splash	yes
Undercoated	yes
Waste hole position	centre back
Back splash height	4" (102 mm)
Faucet hole position	middle
Overflow	yes
Certificates and approvals	pre-consumer recycled 31%, post-consumer-recycled 56%, LEED MR credit 4: recycled content (1-2 points), wheelchair compliant, cUPC approval



Franke Commercial Systems
ws-info.ca@franke.com
www.franke-commercial.com

2014-02-26, Franke CS

Manual Sink Faucets 802-VE39VP317ABCP

Product Type

Deck-mounted manual faucet with 4" centers

Features & Specifications

- Handles include color-coded index
- 4" fixed centers
- Vandal Proof Pressure compensating Econo-Flo non-aerating outlet 0.35 GPM
- Vandal Proof 4" wristblade handle
- Quatern™ compression operating cartridge, right-hand
- Quatern™ compression operating cartridge, left-hand
- ECAST® design provides durable cast brass construction with total lead content equal to or less than 0.25% by weighted average
- Complies with the requirements of the Buy American Act of 1933.





Performance Specification

- Rated Operating Pressure: 20-125 PSI
- Rated Operating Temperature: 40-140°F

Warranty

- 5-Year Limited Cartridge Warranty
- Lifetime Limited Faucet Warranty
- 1-Year Limited Finish Warranty

Codes & Standards

-  ADA ANSI/ICC A117.1
-  ASME A112.18.1/CSA B125.1
- Complies with CALGreen requirements
-  NSF/ANSI 372 Low Lead Content
-  NSF/ANSI/CAN 61: Q ≤ 1

Job Name _____

Item Number _____

Section/Tag _____

Model Specified _____

Architect _____

Engineer _____

Contractor _____

[] Submitted as Shown [] Submitted with Variations

Date _____

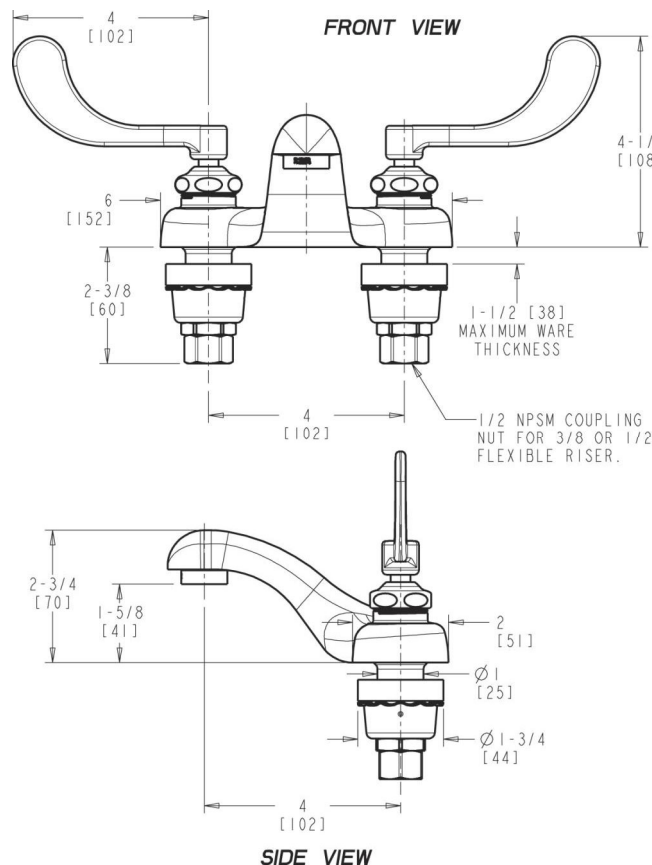


ECAST

ECAST products are intended for installation where state laws and local codes mandate lead content levels or in any location where lead content is a concern.

Architect/Engineer Specification

Chicago Faucets No. 802-VE39VP317ABCP, Sink Faucet for hot and cold water, deck-mounted with 4" fixed centers, chrome plated. 0.35 GPM (1.3 L/min) vandal-proof, pressure compensating, non-aerating, Econo-Flow outlet. 4" metal, vandal-proof, wristblade handles with sixteen-point, tapered broach and secured blue and red index buttons. Quatern™ rebuildable compression cartridge, opens and closes 90°, closes with water pressure, features square, tapered stem. 1/2" NPSM supply inlets and coupling nut for 3/8" or 1/2" flexible riser. ECAST® construction with less than 0.25% lead content by weighted average. CALGreen compliant. This product meets ADA ANSI/ICC A117.1 requirements and is tested and certified to industry standards: ASME A112.18.1/CSA B125.1, Certified to NSF/ANSI 61, Section 9, California Health and Safety Code 116875 (AB1953-2006), Vermont Bill S.152, NSF/ANSI 372 Low Lead Content, and California Green Building Standards Code (CALGreen).



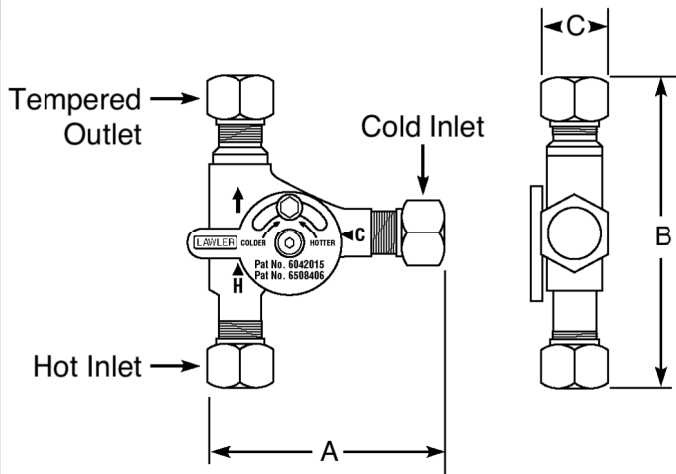
Operation and Maintenance

Installation should be in accordance with local plumbing codes. Flush all pipes thoroughly before installation. After installation, remove spout outlet or flow control and flush faucet thoroughly to clear any debris. Care should be taken when cleaning the product. Do not use abrasive cleaners, chemicals or solvents as they can result in surface damage. Use mild soap and warm water for cleaning and protecting the life of Chicago Faucet products. For specific operation and maintenance refer to the installation instructions and repair parts documents that are located at www.chicagofaucets.com.

Chicago Faucets, member of the Geberit Group, is the leading brand of commercial faucets and fittings in the United States, offering a complete range of products for schools, laboratories, hospitals, office buildings, food service, airports and sport facilities. Call 1.800.TECTRUE or 1.847.803.5000 Option 1 for installation or other technical assistance.



ENG. NO. 86800-B
 PAT. NO. 6,042,015.
 PAT. NO. 6,508,406.
 PAT. NO. 7,175,100.



Mechanical Mixing Valve with Thermostatic Limit Stop

Model TMM - 1070 Lead Free Unit No. 87500 (3/8")



Inlets & Outlet are 3/8" compression fittings

Checks included within inlets

ASSE 1070 Approved

The point of use mixing valve shall be a mechanical mixing valve with a high temperature limit stop with automatic reset. The mixing valve shall have compression fittings and a means to adjust outlet temperature. Valve construction will include a bronze body and integral back flow checks. The mixing valve shall be Lawler model TMM-1070.

Specifications

- Hot water supply temperature: 140°F max.
- Water supply pressure (static): 125 psi max.
- Flow rate @ 45 psi: 2.1 gal/minute min.
- Shut off temperature: 118°F +/-3°F.
- Min. operating pressure: 5 psi.
- Integral rubber duck-bill back-flow checks.
- Pressure must be equal between supplies.

Benefits

- Automatically shuts down flow of water when temperature reaches 120°F.
- Protects against scalding and chilling.
- Offers choice of temperature settings from full cold through 115°F.
- Easy installation.
- Backed by Lawler's One Year Warranty.

Engineer Approval ☐



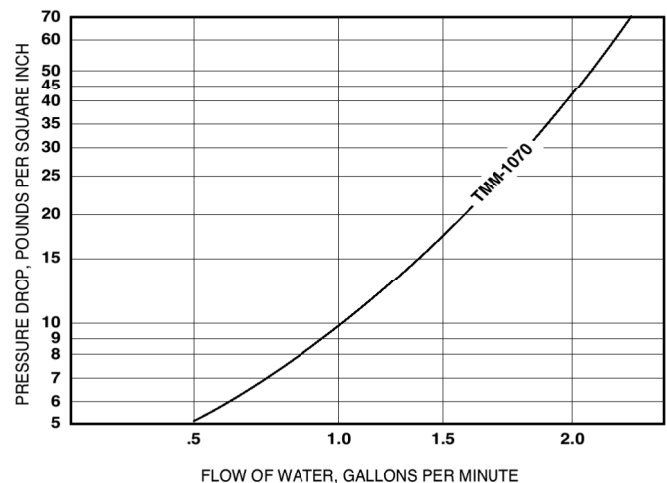
MANUFACTURING CO., INC.

5330 East 25th Street
 Indianapolis, Indiana 46218
 Phone (317) 261-1212
 Fax (317) 261-1208

DIMENSIONS:

Valve Number	A	B	C
TMM-1070	2 1/8"	3 5/16"	7/8"

FLOW CAPACITIES SINGLE STAGE - MODEL TMM-1070



CAPACITIES - MODEL TMM-1070

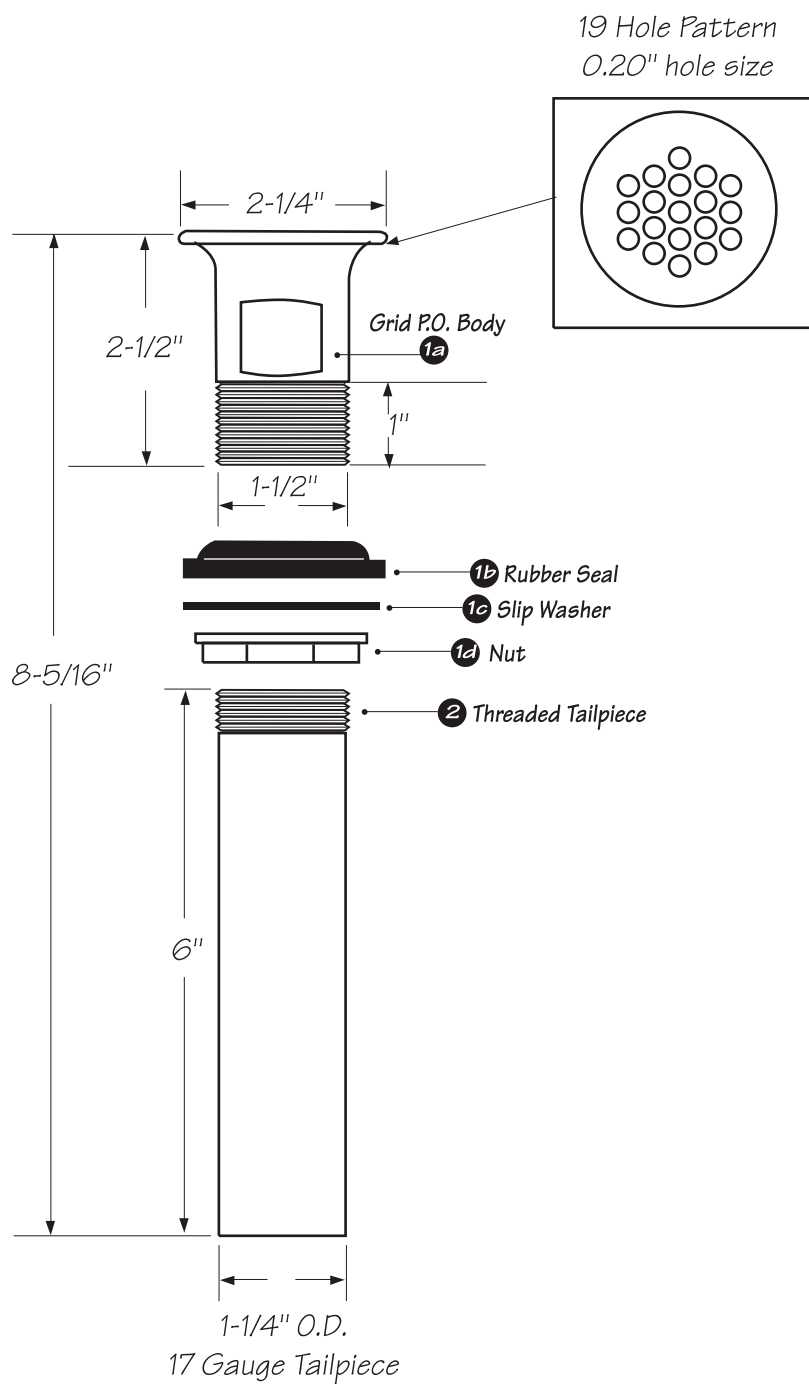
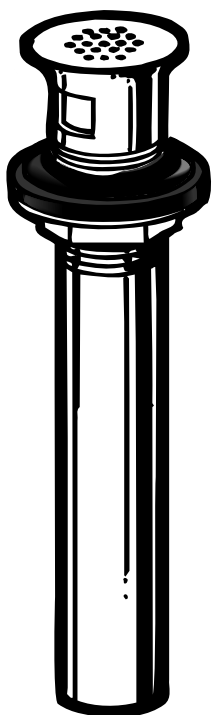
Pressure Drop PSI	5	10	20	40
Valve Number	Capacity			
TMM-1070-GPM	.5	1	1.6	1.9
TMM-1070-LPM	1.8	3.7	6	7

Temperature Adjustment

The temperature adjusting dial is located on the cold inlet. Turning the dial clockwise will lower the outlet temperature, turning the dial counter-clockwise will raise it. The valve cannot be adjusted above its shut-off temperature of 120°F.

Note: For ASSE 1070 applications.

Design and specification subject to change without notice.



1	370	Grid P.O. Body Assembly	<div>OS&B</div> <div>OAKVILLE STAMPING & BENDING</div>		
			Date: March 31/00	Approved by:	Drawn by: S.Black
2	4831-6	17 Gauge Tailpiece	Scale: not to scale		Revision: 01
			Product: P.O. Plug		Number: 3700



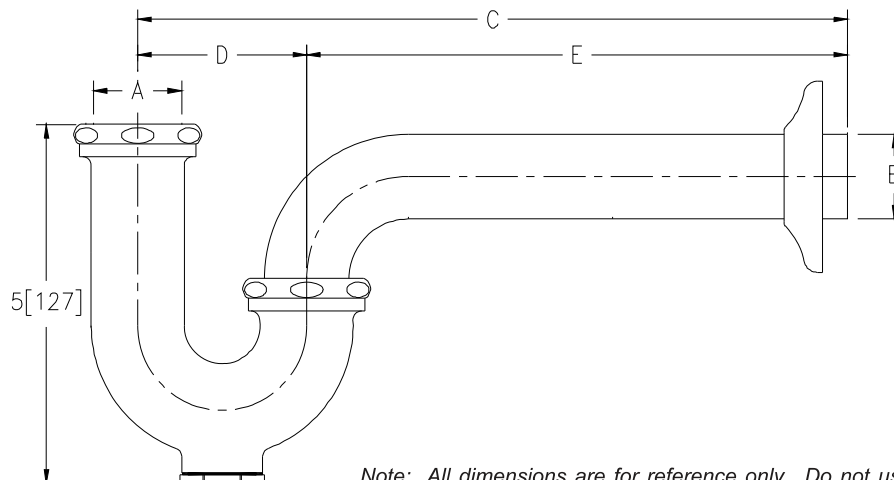
SEMI-CAST P-TRAPS WITH WALL BEND

Z8700-PC TO Z8708-PC

TAG



Engineering Specification: Zurn Z8700-PC to Z8708-PC. – Chrome-plated cast brass (copper alloy) body P-trap with cleanout, tubular brass wall bend as specified, die-cast nuts, and shallow escutcheon with compression inlet.



Note: All dimensions are for reference only. Do not use for pre-plumbing.

PRODUCT NUMBER	A INLET in[mm]	B OUTLET in[mm]	GAUGE	DIMENSIONS			MASTER CARTON	WEIGHT CARTON [lbs]
				C in[mm]	D in[mm]	E in[mm]		
✓ Z8700-PC	1 1/4[32]	1 1/4[32]	17	10[254]	2 1/2[64]	7 1/2[191]	12	24
Z8700-8-PC	1 1/4[32]	1 1/4[32]	17	11[279]	2 1/2[64]	8 1/2[216]	12	24
Z8700-15-PC	1 1/4[32]	1 1/4[32]	17	15[381]	2 1/2[64]	12 1/2[318]	18	40
Z8701-PC	1 1/4[32]	1 1/2[38]	17	10 1/2[267]	3[76]	7 1/2[191]	12	24
Z8701-9-PC	1 1/4[32]	1 1/2[38]	17	12[305]	3[76]	9[229]	12	24
Z8701-15-PC	1 1/4[32]	1 1/2[38]	17	15[381]	3[76]	12[305]	18	42
Z8702-PC*	1 1/2[38]	1 1/2[38]	17	10 1/2[267]	3[76]	7 1/2[191]	12	24
Z8702-9-PC*	1 1/2[38]	1 1/2[38]	17	12[305]	3[76]	9[229]	12	24
Z8702-15-PC*	1 1/2[38]	1 1/2[38]	17	15[381]	3[76]	12[305]	18	42
Z8703B-PC**	1 1/2[38]	2[51]	17	12 1/2[318]	3 1/2[89]	9[229]	6	18
Z8704B-PC**	2[51]	2[51]	17	12 1/2[318]	3 1/2[89]	9[229]	6	18
Z8706-PC	1 1/4[32]	1 1/4[32]	20	10[254]	2 1/2[64]	7 1/2[191]	12	24
Z8707-PC	1 1/4[32]	1 1/2[38]	20	10 1/2[267]	3[76]	7 1/2[191]	12	24
Z8708-PC*	1 1/2[38]	1 1/2[38]	20	10 1/2[267]	3[76]	7 1/2[191]	12	24

OPTIONAL ACCESSORIES

Suffix	Description
✓ -B	Brass Nuts
___ -BX	Box Escutcheon
___ -CE	Cast Brass Escutcheon with Setscrew
✓ -D	Deep Escutcheon (Note = not available for Z8703B-PC and Z8704B-PC)
___ -J	Metal to Metal Ground Joint Connection
___ -WC	Waste Connections - Compression
___ -15	15[381] C Dim. 1 1/4[32] and 1 1/2[38] Only
___ -18	18[457] C Dim. 1 1/4[32] and 1 1/2[38] Only

* COMES WITH OPTIONAL 1-1/2" x 1-1/4" REDUCTION POLY-WASHER FOR INLET

** SHIPPED WITH BRASS NUTS UNLESS OTHERWISE SPECIFIED

ZURN INDUSTRIES, LLC ♦ COMMERCIAL BRASS OPERATION ♦ 2640 SOUTH WORK STREET ♦ FALCONER NY 14733

Phone: 1-800-997-3876 ♦ Fax: 1-919-775-3541 ♦ www.zurn.com

In Canada: ZURN INDUSTRIES LIMITED ♦ 3544 Nashua Drive ♦ Mississauga, Ontario L4V1L2 ♦ Phone: 905/405-8272 Fax: 905/405-1292