

KEY PLAN

1.	ISSUED FOR CONSTRUCTION	02/04/2024	L.T.
No.	Revision	Date	By

Drawing Notes

- All drawings, plans, models, designs, specifications and other documents prepared by Read Jones Christoffersen Ltd. ("RJCL") and used in connection with this project are instruments of service for the work shown in them (the "Work") and as such are and remain the property of RJCL whether the Work is executed or not, and RJCL reserves the copyright in them and in the Work executed from them, and they shall not be used for any other work or project.
- These drawings are "design drawings" only. They may not be suitable for use as shop drawings. Use of these drawings as base drawings for "shop drawings" is not permitted unless written permission containing certain conditions and limitations is obtained from RJCL. The work "as constructed" may vary from what is shown on these drawings.
- Use of these drawings is limited to that identified in the Revision column. Do not construct from these drawings unless marked "Issued for Construction" by RJCL in the Revision column, and then only for the parts noted. The drawings shall not be used for "pricing", "costing", or "tender" unless so indicated in the Revision column. "Pricing" or "Costing" drawings are not complete and any prices based on such drawings must allow for this.



Project Name
2299 Dundas Street West
Toronto, Ontario

**SHELTERS PROGRAM -
SHELTER RENOVATION**

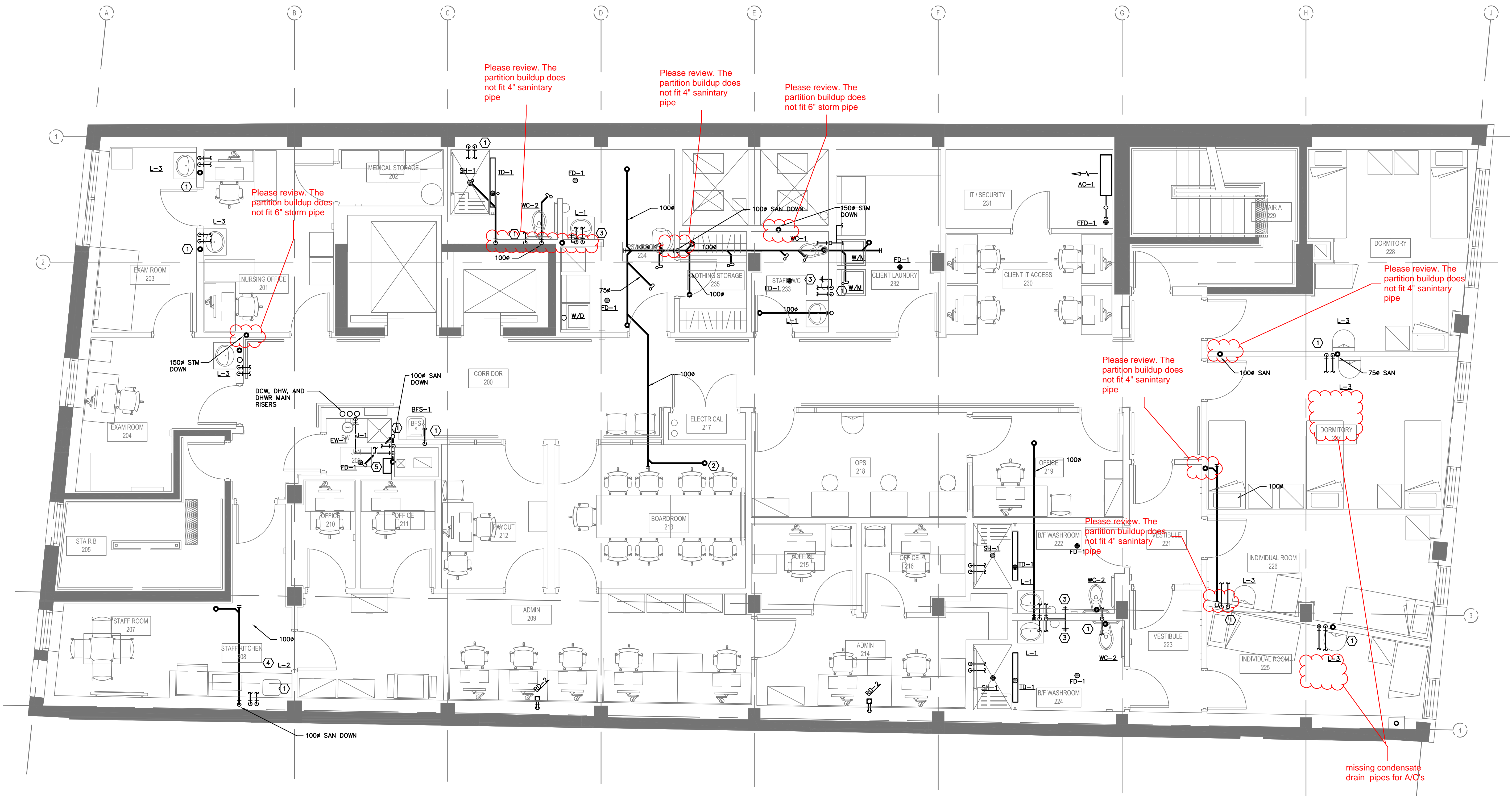
Sheet Title

SECOND FLOOR PLUMBING

Drawn By **LT** Scale **1:50**
Designed By **LT** Date **JUNE 2019**
Project Number **2019-0035**

Sheet Number Revision

M-103



DRAWING NOTES

- PLUMBING FIXTURE SERVED FROM BELOW. (TYPICAL)
- SANITARY DRAIN FROM ABOVE. (TYPICAL)
- PROVIDE SECURED HOSE BIB CONNECTION UNDER WASHROOM LAVATORY. (TYPICAL)
- SINK IN STAFF CAFETERIA SHALL BE COMPLETE WITH GLASS FILLER FILTER PACKAGE, PROVIDE WATER LINE CONNECTION FOR FRIDGE AND DISHWASHER
- ELECTRONIC TRAP PRIMER