



54 Audia Court, Unit 2
Concord, ON L4K 3N5
(905)-738-1400

Submittal 22-001-017

PROJECT NAME	PROJECT ADDRESS	DATE SUBMITTED
ENBRIDGE BLDG B 22-001	405 Eastern Ave, Toronto, ON, M4M 1B7	May 29, 2025

TO	FROM
Ananth Manigandan	INZAMAN KHAN
COMPANY	COMPANY
ROCHON BUILDING CORPORATION	Consult Mechanical Inc.
EMAIL	EMAIL
AManigandan@rochonbuildingcorp.com	inzaman@consultmechanical.com
ADDRESS	ADDRESS
74 INDUSTY STREET TORONTO, ON M6M 4L7	54 Audia Court, Unit 2 Concord, ON L4K 3N5

Title

Revised flush valves for WC-1,2 / U-1 as per PC-108

Description

WC-1,2 : Delta commercial 81T201HWA-48
U-1 : Delta commercial 81T231HWA05

Package Items

SPEC	SUBSECTION	ITEM	TYPE
------	------------	------	------




Electronic Flush Valves & Retrofit Kits

Hard wire FLUSH VALVE for 1-1/2" top spud WATER CLOSET with H2Optics® SENSOR ON VALVE - maximum 11-1/2" height (c/l of inlet to base of outlet)

Model No: 81T201HWA-48

COMPLIES WITH:

- IAPMO listed to ASSE 1037/ ASME A112.1037/ CSA B125.37
-  Indicates compliance to ICC / ANSI A117.1
- Patented
- EPA WaterSense Listed
- (Contact Delta Representative for State and/or Local Approvals)



SPECIFICATION:

- Polished chrome plated vandal resistant metal cover with top mounted sensor operated H2Optics® electronics
- Right or left-hand supply installation
- ADA compliant, automatic operation hardwire powered infrared sensor
- Scratch resistant replaceable lens window
- Supplied with an advanced infrared sensor activated flush system that uses precise user distance measurements along with a bowl length setting to activate the correct flush for each usage
- Hardwire adaptor 24VAC to 6VDC converter (supplied)
- Vandal resistant copper tube conduit
- Optional 24 hour automatic flush factory set to off
- Set-up sensor range adjustment indicator lights
- 24 VAC input, 6 second arming delay
- Electronic operated non-hold-open metal override button with 5 second lockout
- (110 to 24 VAC Transformer not included. See selection below for additional part number.)
- Quiet action, TECK® exposed diaphragm flush valve
- Chloramine resistant diaphragm
- Forged brass diaphragm retainer
- Renewable seat
- Polished chrome plated body
- 1" FIP/Copper sweat inlet adaptor, angle check stop with protecting cap
- Adjustable 121mm (4-3/4") plus or minus 11mm (7/16") inlet/valve outlet centers
- Vacuum breaker
- Cover tube, stainless steel wall flange, spud flange, concealed spud nut, and 292mm (11-1/2") outlet tube
- Factory Set to 4.8L (1.27 Gal.) - NOT FIELD ADJUSTABLE

OPERATION:

- **Recommended water supply:**
Minimum flowing pressure – 25 psi (172 kPa)
Minimum flow rate – 25 gpm (95 L/min)

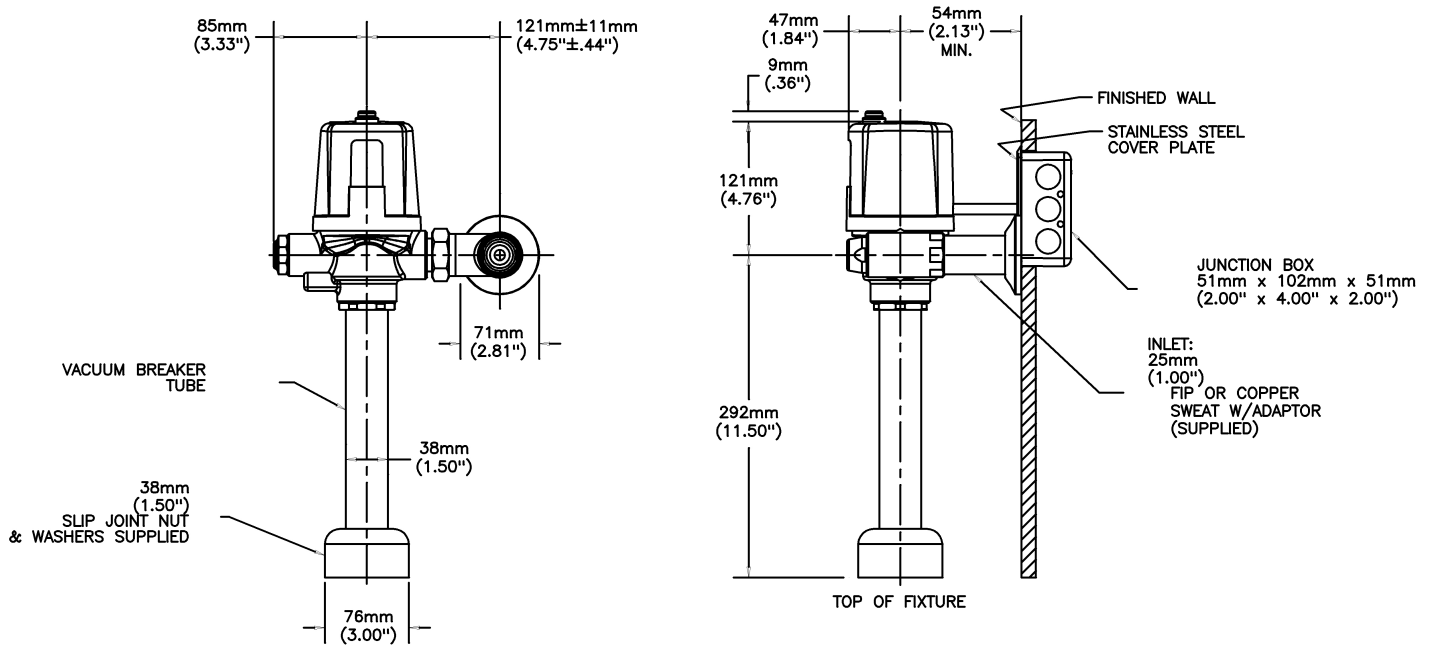
(Dimensional drawing on following page)

Delta reserves the right (1) to make changes to specifications and materials, and (2) to change or discontinue models, both without notice or obligation. Dimensions are for reference. Measurement may vary plus or minus 6mm(0.25"). Mounting locations are suggested only. Check with local codes for requirements in your area. This spec was produced April 14, 2021.

Delta Faucet Company - 55 East 111th St. - Indianapolis, Indiana, USA 46280 - (317) 848-1812
Delta Faucet Canada - 395 Matheson Blvd E - Mississauga, Ontario, Canada L4Z 2H2 - (905) 712-3030

Model No: 81T201HWA-48

Teck® flushometer valves are designed to operate at any supply pressure between 20 psi and 125 psi in accordance with ASSE 1037/ASME A112.1037/ CSA B125.37. The Teck® flush valve delivers the industry's highest peak flows to enhance bowl scrubbing. At high water pressures, splash out, noise or reduced life of plumbing components may be observed with a few models of water closet or urinal fixtures. To minimize or eliminate these effects, select a different model of water closet or urinal from the same or another manufacturer, or install a pressure reducing valve. If the installation does not allow for either of these options, the control stop adjusting screw may be used to reduce pressure to the valve.



Delta reserves the right (1) to make changes to specifications and materials, and (2) to change or discontinue models, both without notice or obligation. Dimensions are for reference. Measurement may vary plus or minus 6mm(0.25"). Mounting locations are suggested only. Check with local codes for requirements in your area. This spec was produced April 14, 2021.

Delta Faucet Company - 55 East 111th St. - Indianapolis, Indiana, USA 46280 - (317) 848-1812
 Delta Faucet Canada - 395 Matheson Blvd E - Mississauga, Ontario, Canada L4Z 2H2 - (905) 712-3030




Electronic Flush Valves & Retrofit Kits

Hard wire flush valve for 3/4" top spud flushing URINAL with H2Optics® SENSOR ON VALVE - maximum 13" height (c/l of inlet to top of urinal)

Model No: 81T231HWA-05

COMPLIES WITH:

- IAPMO listed to ASSE 1037/ ASME A112.1037/ CSA B125.37
-  Indicates compliance to ICC / ANSI A117.1
- Patented
- EPA WaterSense Listed
- (Contact Delta Representative for State and/or Local Approvals)



SPECIFICATION:

- Polished chrome plated vandal resistant metal cover with top mounted sensor operated H2Optics® electronics
- Right or left-hand supply installation
- ADA compliant, automatic operation hardwire powered infrared sensor
- Scratch resistant replaceable lens window
- Infrared sensor range adjustment of 203mm - 610mm (8"- 24"), factory set at 16" (±2")
- Hardwire Adaptor 24VAC to 6VDC converter (supplied)
- Vandal resistant copper tube conduit
- Optional 24 hour automatic flush factory set to off
- Set-up sensor range adjustment indicator lights
- 24 VAC input, 6 second arming delay
- Electronic operated non-hold-open metal override button with 5 second lockout
- (110 to 24 VAC Transformer not included. See selection below for additional part number.)
- Quiet action, TECK® exposed diaphragm flush valve
- Chloramine resistant diaphragm
- Brass diaphragm retainer
- Renewable seat
- Polished chrome plated body.
- Vacuum breaker
- Cover tube, stainless steel wall flange, spud flange, spud nut, and 330mm (13") outlet tube
- Factory Set to 0.5L (0.125 Gal.) - NOT FIELD ADJUSTABLE

OPERATION:

- **Recommended water supply:**
Minimum flowing pressure – 25 psi (172 kPa)
Minimum flow rate – 8 gpm (30 L/min)

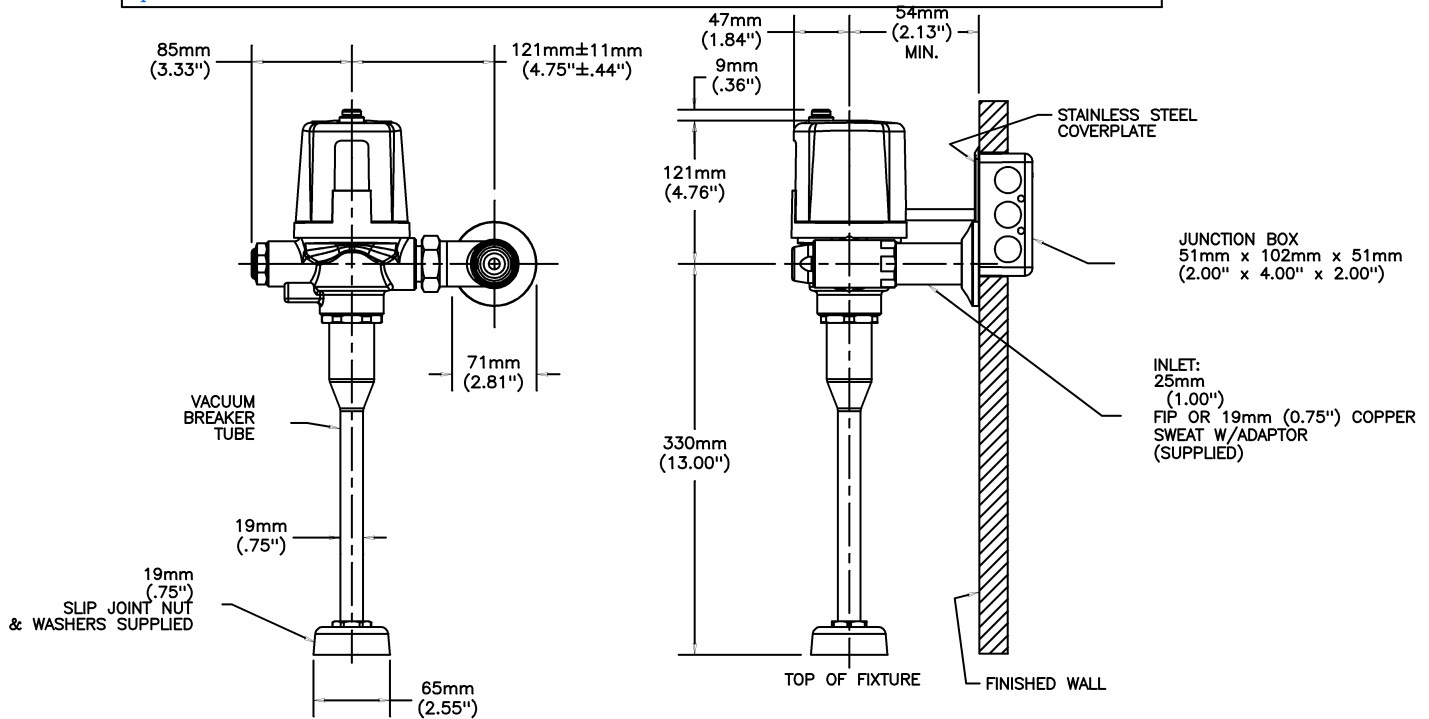
(Dimensional drawing on following page)

Delta reserves the right (1) to make changes to specifications and materials, and (2) to change or discontinue models, both without notice or obligation. Dimensions are for reference. Measurement may vary plus or minus 6mm(0.25"). Mounting locations are suggested only. Check with local codes for requirements in your area. This spec was produced April 29, 2021.

Delta Faucet Company - 55 East 111th St. - Indianapolis, Indiana, USA 46280 - (317) 848-1812
Delta Faucet Canada - 395 Matheson Blvd E - Mississauga, Ontario, Canada L4Z 2H2 - (905) 712-3030

Model No: 81T231HWA-05

Teck® flushometer valves are designed to operate at any supply pressure between 20 psi and 125 psi in accordance with ASSE 1037/ASME A112.1037/ CSA B125.37. The Teck® flush valve delivers the industry's highest peak flows to enhance bowl scrubbing. At high water pressures, splash out, noise or reduced life of plumbing components may be observed with a few models of water closet or urinal fixtures. To minimize or eliminate these effects, select a different model of water closet or urinal from the same or another manufacturer, or install a pressure reducing valve. If the installation does not allow for either of these options, the control stop adjusting screw may be used to reduce pressure to the valve.



Delta reserves the right (1) to make changes to specifications and materials, and (2) to change or discontinue models, both without notice or obligation. Dimensions are for reference. Measurement may vary plus or minus 6mm(0.25"). Mounting locations are suggested only. Check with local codes for requirements in your area. This spec was produced April 29, 2021.

Delta Faucet Company - 55 East 111th St. - Indianapolis, Indiana, USA 46280 - (317) 848-1812
Delta Faucet Canada - 395 Matheson Blvd E - Mississauga, Ontario, Canada L4Z 2H2 - (905) 712-3030

PROPOSED CHANGE # 000108

To: Rochon Building Corporation
74 Industry Street
York Ontario M6M 4L7

Project No.: 2019-0248-10
Project: ENB_STN-B
Project Address: 405 Eastern Avenue
Toronto Ontario M4M 1B7
Contract: Work Release to Master Construction Agreement
Client Reference Number: 2019-0248-10
Owner (Name & Address): Enbridge Gas Distribution Inc.
500 Consumers Road
North York Ontario M2J 1P8

Unless shown to the contrary, this is not your authority to proceed with the change. All changes shown which affect the Contract Amount shall only proceed under the authority of a CHANGE ORDER. Change Orders will only be issued as the work is authorized by the owner. Pursuant to the Contract, promptly submit itemized changes for the items listed that affect the Contract Amount. These itemized changes shall be in detail accompanied by appropriate backup and the value of each item of the change given separately. Do not proceed with the change without a *Change Order* or *Change Directive* authorizing a change in the *Work*.

DESCRIPTION

Title: WaterSense Label Flush Valves for LEED

Please provide a quotation to supply and install the following:

1. In lieu of scheduled flush valves for urinal U-1, provide Delta commercial 81T231HWA05 for WaterSense approval.
2. In lieu of scheduled flush valves for water closet WC-1 & WC-2, provide Delta commercial 81T201HWA-48 for WaterSense approval.

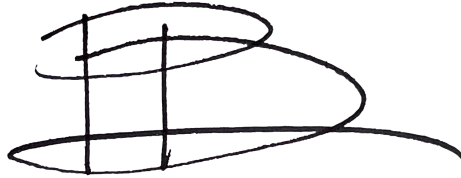
Reason for Proposed Change : Mechanical Engineer Coordination

Attachments

[Consultant Recommendation \(M000018\) WaterSense Label Flush Valves for LEED](#)

PROPOSED CHANGE # 000108

WALTERFEDY



Patrick Dormer

Title: Contract Administrator, Architecture
Contract Administrator

26-Aug-2024

Date

Consultant Recommendation
No. M000018

WALTERFEDY

WalterFedy
675 Queen Street South
Suite 111
Kitchener, ON, N2M1A1
Canada

Title:	WaterSense Label Flush Valves for LEED	Date:	2024-Aug-23 14:44
Project No.:	2019-0248-10	Status:	Closed
Project:	ENB_STN-B		

The Consultant Recommendation's clarifications or changes described below are only to be included into the Contract Documents once attached with an authorized SI, PC or CO cover sheet. Independently, this Consultant Recommendation has no contractual value.

Attachments

[Change \(000108\) WaterSense Label Flush Valves for LEED](#)

Description

1. In lieu of scheduled flush valves for urinal U-1, provide Delta commercial 81T231HWA05 for WaterSense approval.
2. In lieu of scheduled flush valves for water closet WC-1 & WC-2, provide Delta commercial 81T201HWA-48 for WaterSense approval.

Reason

Mechanical Engineering Coordination.



Nick Bertoia

Per: WalterFedy