

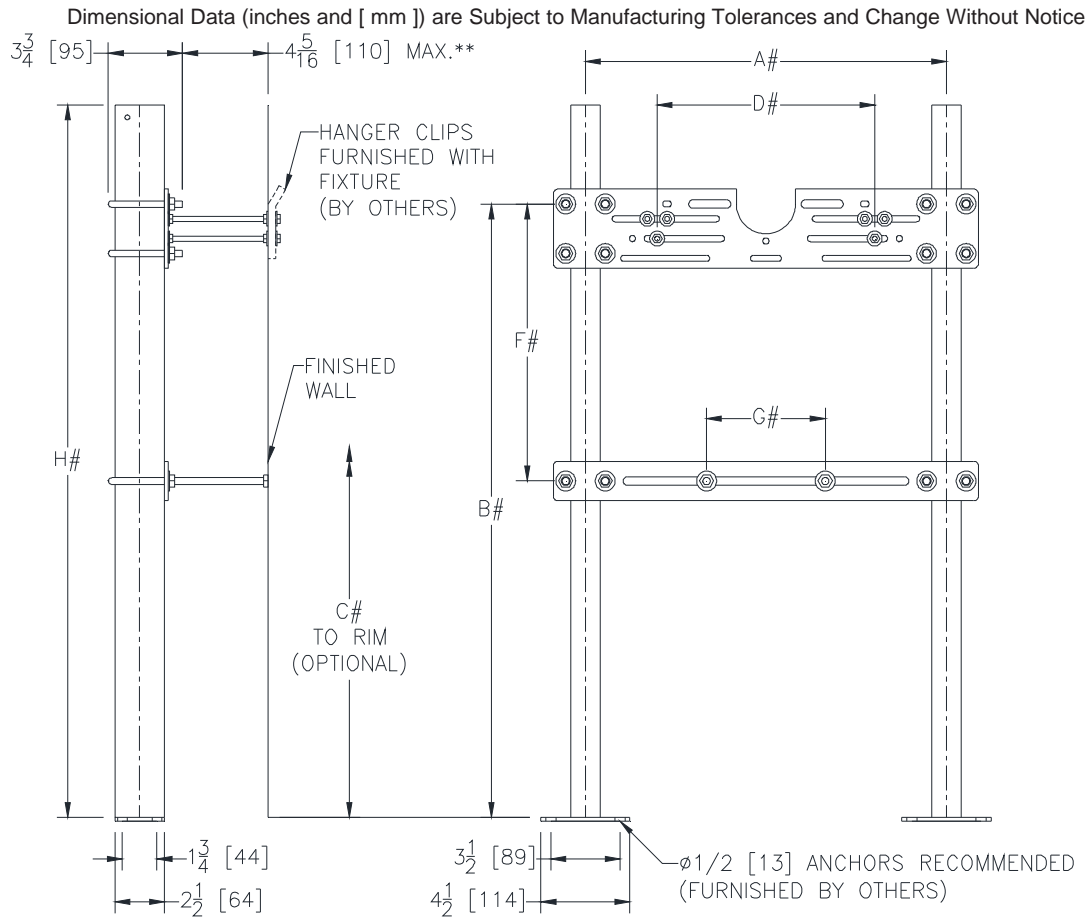


Martinrea Bldg.
99 Golf Course Line

BP13749 - ZURN Drains SDP



PREPARED BY: CARDINAL SALES

**Z1222** ← **UR-1****PLATE TYPE SYSTEM
WITH BEARING PLATE****SPECIFICATION SHEET****TAG** _____

**WITH STANDARD STUD LENGTH OF 6 [152]

REFER TO ROUGH-IN GUIDE OF SPECIFIC FIXTURE FOR DIMENSION

Product No.	Approx. Wt. Lbs. [kg]
Z1222	30 [14]

ENGINEERING SPECIFICATION: ZURN Z1222

Wall urinal support system complete with Dura-Coated carbon structural steel rectangular tubing uprights, conforming to ASTM A500 Grade C, with welded base feet having slotted floor anchor holes. Lower bearing plate is vertically adjustable with slot to accommodate bearing jack placement. Upper universal hanger plate is pre-notched for back spud inlet and is designed for various hardware positions and fixtures. Includes mounting fasteners and hardware. Carrier system exceeds load and deflection requirements as outlined in ASME Standard A112.6.1M.

OPTIONS (Check/specify appropriate options)**PREFIXES**___ **Z** **Dura-Coated System with Universal Plate*****SUFFIXES**

___ -EZ Easy to Install Assembly (Uprights, bearing plate, and hanger plate are factory assembled)
___ -UA Urinal Adapter
___ -58 Flush Valve Supply Support

* Regularly furnished unless otherwise specified.

Zurn Industries, LLC | Specification Drainage Operation
1801 Pittsburgh Avenue, Erie, PA U.S.A. 16502 · Ph. 855-663-9876, Fax 814-454-7929
In Canada | **Zurn Industries Limited**
3544 Nashua Drive, Mississauga, Ontario L4V 1L2 · Ph. 905-405-8272, Fax 905-405-1292
www.zurn.com

Rev. G
Date: 09/27/2017
C.N. No. 137976
Prod. | Dwg. No. Z1222



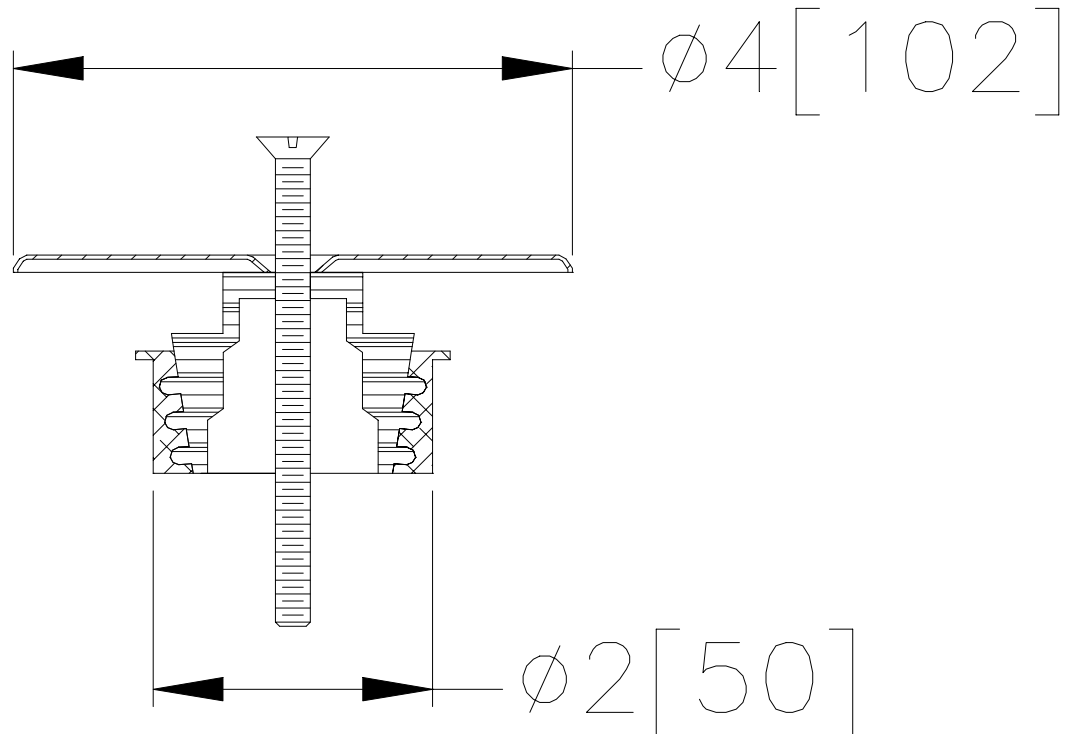
Z-1666-1 ← **UR-1**
URINAL CLEANOUT

SPECIFICATION SHEET

TAG _____



Dimensional Data (inches and [mm]) are Subject to Manufacturing Tolerances and Change Without Notice



Pipe Size Inches / [mm]	Approx. Wt. Lbs. / [kg]
1-1/2 - 2 [38 - 51]	2 [1]

ENGINEERING SPECIFICATION: ZURN Z-1666-1 Urinal Cleanout with 4" [102mm] diameter stainless steel access cover and centre securing screw.

OPTIONS (Check/specify appropriate options)

SUFFIXES

___	-VP	Vandal-Proof Screws
___	-7	7" [178mm] Stainless Steel Access Cover
___	-9	9" [229mm] Stainless Steel Access Cover

*REGULARLY FURNISHED UNLESS OTHERWISE SPECIFIED

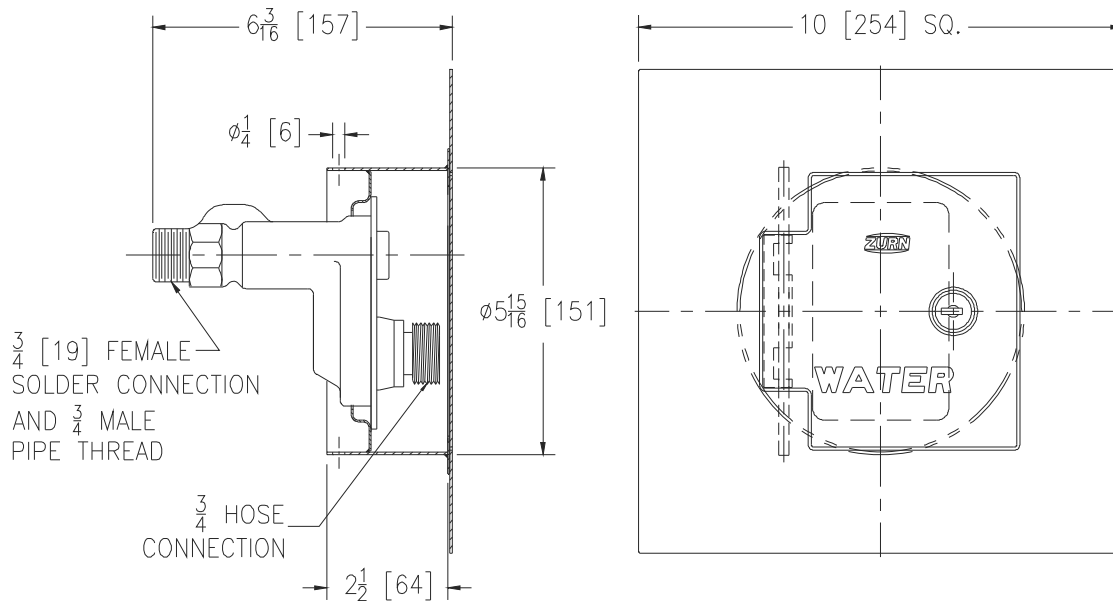
REV. **DATE: 11/15/99** **C.N. NO. 83366**

DWG. NO. 63654 **PRODUCT NO. Z-1666-1**

**Z1332XL-EZ** ← **HB-1****ECOLOTROL CERAMIC DISC WALL HYDRANT**
Encased, Anti-Siphon, Automatic Draining, Moderate Climate**SPECIFICATION SHEET**

TAG _____

Dimensional Data (inches and [mm]) are Subject to Manufacturing Tolerances and Change Without Notice



Wall Thickness in [mm]	Approx. Wt. lbs [kg]
8 [203]	4 [2]

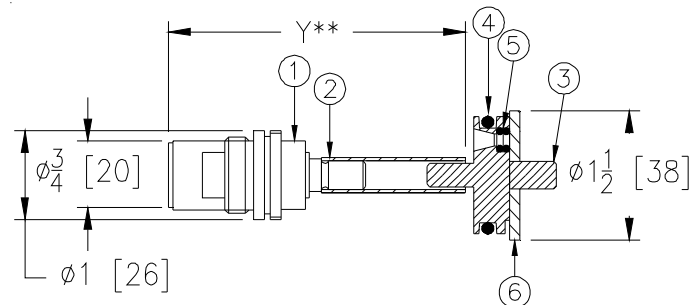
PATENTED

PAT. NO. 7,395,834

ENGINEERING SPECIFICATION: ZURN Z1332XL-EZ

Encased, Ecolotrol™, lead-free, anti-siphon, moderate climate / interior wall hydrant for flush installation in 6" [152mm] diameter cored hole concrete wall. Hydrant features integral backflow preventer with anti-siphon technology, all-bronze interior components with 1/2 turn long-life ceramic disc cartridge, combination 3/4" [19mm] female solder and 3/4" male pipe thread inlet connection, and 3/4" male hose connection. Hydrant furnished with type 304 stainless steel housing with large flange and locking hinged cover stamped "WATER" and includes operating key.

Zurn "XL" Lead-Free compliant products are a line of durable plumbing products designed and manufactured to comply with state laws and local codes that mandate maximum allowable lead content levels. Zurn "XL" products are manufactured in accordance to the Federal SWDA section 1417.

**OPTIONS** (Check/specify appropriate options)**SUFFIXES**

___ -CL	Cylinder Lock
___ -RK	Hydrant Parts Repair Kit (HYD-RK-Z1321XL/33XL)
___ -RT12	Ceramic Cartridge Removal Tool (up to 12 [305] wall)
___ -8	8 [203] Diameter Cored Hole

Internal Components

Item	Name	Quan.
1	Ceramic Cartridge	1
2	Operating Tube	1
3	Operating Coupling	1
4	O-Ring	1
5	O-Ring	1
6	Retaining Washer	1

* Regularly furnished unless otherwise specified.

** When ordering replacement cartridge assembly Specify Y dim.

Zurn Industries, LLC | Specification Drainage Operation
1801 Pittsburgh Avenue, Erie, PA U.S.A. 16502 · Ph. 855-663-9876, Fax 814-454-7929
In Canada | **Zurn Industries Limited**
3544 Nashua Drive, Mississauga, Ontario L4V 1L2 · Ph. 905-405-8272, Fax 905-405-1292
www.zurn.com

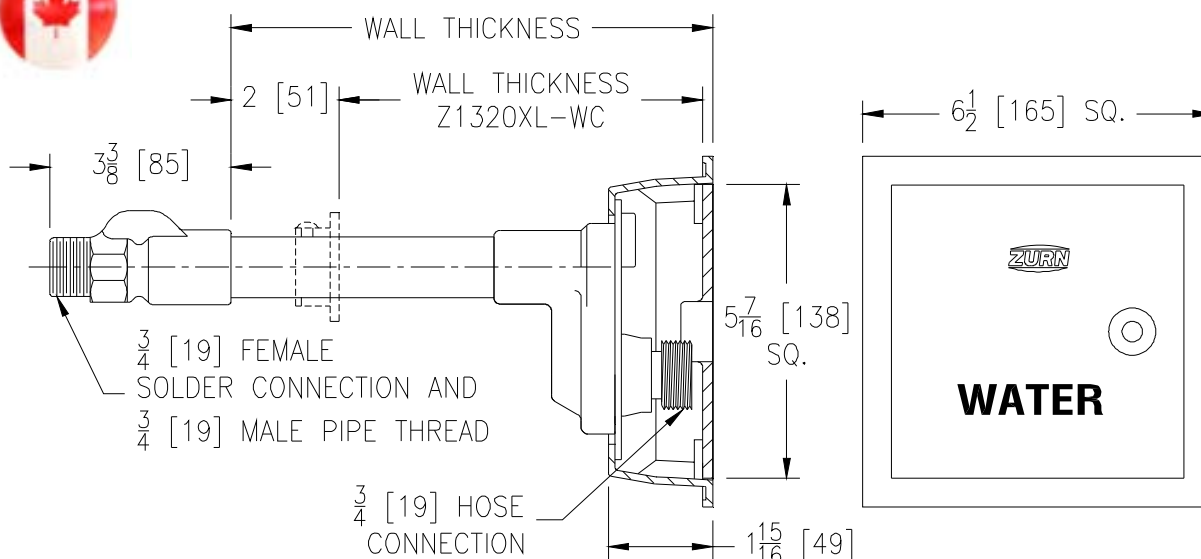
Rev. B
Date: 09/28/2017
C.N. No. 138011
Prod. | Dwg. No. Z1332XL-EZ

**Z1320XL** ← NFHB-1**ECOLOtrol CERAMIC DISC
WALL HYDRANT****Encased, Non-Freeze, Anti-Siphon, Automatic Draining**

SPECIFICATION SHEET

TAG _____

Dimensional Data (inches and [mm]) are Subject to Manufacturing Tolerances and Change Without Notice



Wall Thickness in [mm]	Approx. Wt. lbs [kg]
6, 8 [152, 203]	8 [4]
10, 12, 14 [254, 305, 356]	9 [4]
16, 18 [406, 457]	10 [5]
20, 22, 24 [508, 559, 610]	11 [5]
26, 30 [660, 762]	13 [6]

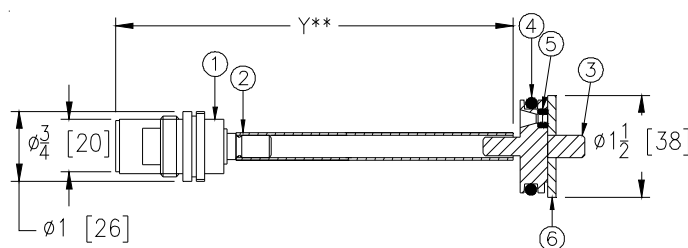
ENGINEERING SPECIFICATION: ZURN Z1320XL

Encased, Ecolotrol™, lead-free, non-freeze automatic draining wall hydrant for flush installation. Hydrant features integral backflow preventer with anti-siphon technology, copper casing, all-bronze interior components with 1/2 turn long-life ceramic disc cartridge, combination 3/4" [19] female solder and 3/4" [19] male pipe thread inlet connection, and 3/4" [19] male hose connection. Hydrant furnished with nickel bronze housing with locking hinged cover stamped "WATER" and includes operating key.

Zurn "XL" Lead-Free compliant products are a line of durable plumbing products designed and manufactured to comply with state laws and local codes that mandate maximum allowable lead content levels. Zurn "XL" products are manufactured in accordance to the Federal SWDA section 1417.

OPTIONS (Check/specify appropriate options)**SUFFIXES**

___ -CL	Cylinder Lock
___ -PB	Polished Bronze Face
___ -RK	Hydrant Parts Repair Kit (HYD-RK-Z1321XL-33XL)
___ -RT12	Ceramic Cartridge Removal Tool (Up to 12 [305] Wall)
___ -RT24	Ceramic Cartridge Removal Tool (Up to 24 [610] Wall)
___ -RT36	Ceramic Cartridge Removal Tool (Up to 36 [915] Wall)
___ -WC	Wall Clamp
___ -34EL	3/4 [19] 90° Solder Inlet Elbow
___ -34FIP	3/4 [19] IP Straight Female Inlet Adapter

**Internal Components**

Item	Name	Quan.
1	Ceramic Cartridge	1
2	Operating Tube	1
3	Operating Coupling	1
4	O-Ring	1
5	O-Ring	1
6	Retaining Washer	1

* Regularly furnished unless otherwise specified.

** When ordering replacement cartridge assembly Specify Y dim.

Zurn Industries, LLC | Specification Drainage Operation
1801 Pittsburgh Avenue, Erie, PA U.S.A. 16502 · Ph. 855-663-9876, Fax 814-454-7929
In Canada | Zurn Industries Limited
3544 Nashua Drive, Mississauga, Ontario L4V 1L2 · Ph. 905-405-8272, Fax 905-405-1292
www.zurn.com

Rev. A
Date: 8/2815
C.N. No. 133098
Prod. | Dwg. No. Z1320XL

Z1320XL ← **NFHB-1**

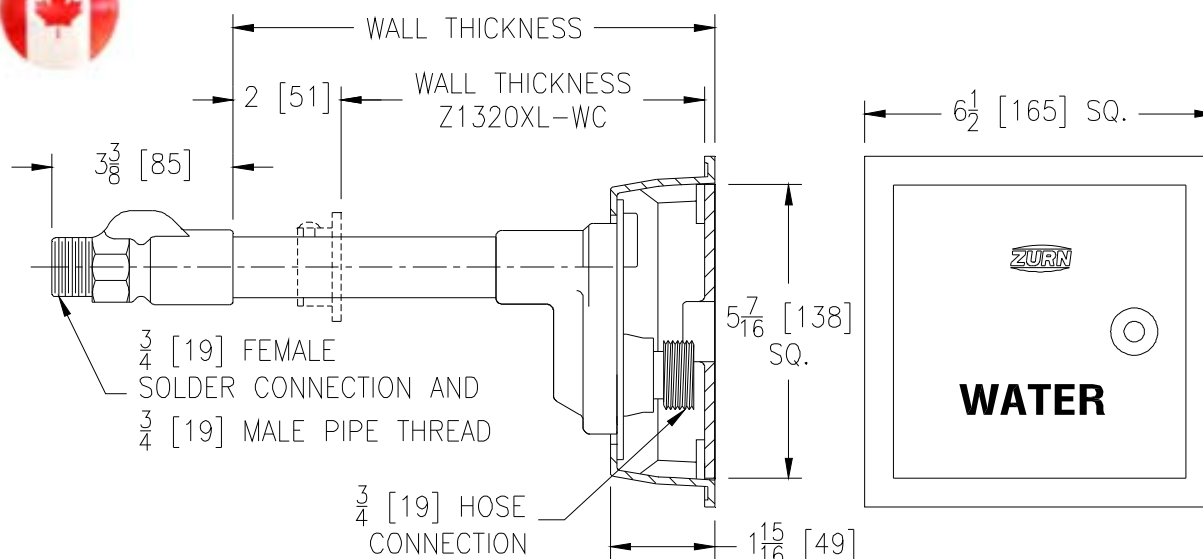
ECOTROL CERAMIC DISC WALL HYDRANT

Encased, Non-Freeze, Anti-Siphon, Automatic Draining

SPECIFICATION SHEET

TAG

Dimensional Data (inches and [mm]) are Subject to Manufacturing Tolerances and Change Without Notice



Wall Thickness in [mm]	Approx. Wt. lbs [kg]
6, 8 [152, 203]	8 [4]
10, 12, 14 [254, 305, 356]	9 [4]
16, 18 [406, 457]	10 [5]
20, 22, 24 [508, 559, 610]	11 [5]
26, 30 [660, 762]	13 [6]

ENGINEERING SPECIFICATION: ZURN Z1320XL

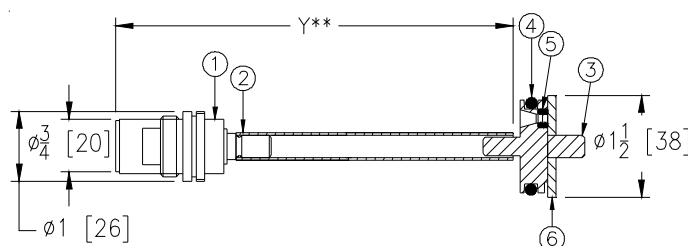
Encased, Ecolotrol™, lead-free, non-freeze automatic draining wall hydrant for flush installation. Hydrant features integral backflow preventer with anti-siphon technology, copper casing, all-bronze interior components with 1/2 turn long-life ceramic disc cartridge, combination 3/4" [19] female solder and 3/4" [19] male pipe thread inlet connection, and 3/4" [19] male hose connection. Hydrant furnished with nickel bronze housing with locking hinged cover stamped "WATER" and includes operating key.

Zurn "XL" Lead-Free compliant products are a line of durable plumbing products designed and manufactured to comply with state laws and local codes that mandate maximum allowable lead content levels. Zurn "XL" products are manufactured in accordance to the Federal SWDA section 1417.

OPTIONS (Check/specify appropriate options)

SUFFIXES

_____	-CL	Cylinder Lock
_____	-PB	Polished Bronze Face
_____	-RK	Hydrant Parts Repair Kit (HYD-RK-Z1321XL-33XL)
_____	-RT12	Ceramic Cartridge Removal Tool (Up to 12 [305] Wall)
_____	-RT24	Ceramic Cartridge Removal Tool (Up to 24 [610] Wall)
_____	-RT36	Ceramic Cartridge Removal Tool (Up to 36 [915] Wall)
_____	-WC	Wall Clamp
_____	-34EL	3/4 [19] 90° Solder Inlet Elbow
_____	-34FIP	3/4 [19] IP Straight Female Inlet Adapter



Internal Components

Item	Name	Quan.
1	Ceramic Cartridge	1
2	Operating Tube	1
3	Operating Coupling	1
4	O-Ring	1
5	O-Ring	1
6	Retaining Washer	1

* Regularly furnished unless otherwise specified.

** When ordering replacement cartridge assembly Specify Y dim.

Zurn Industries, LLC | Specification Drainage Operation
1801 Pittsburgh Avenue, Erie, PA U.S.A. 16502 · Ph. 855-663-9876, Fax 814-454-7929
In Canada | **Zurn Industries Limited**
3544 Nashua Drive, Mississauga, Ontario L4V 1L2 · Ph. 905-405-8272, Fax 905-405-1292
www.zurn.com

Rev. A
Date: 8/2815
C.N. No. 133098
Prod. | Dwg. No. Z1320XL

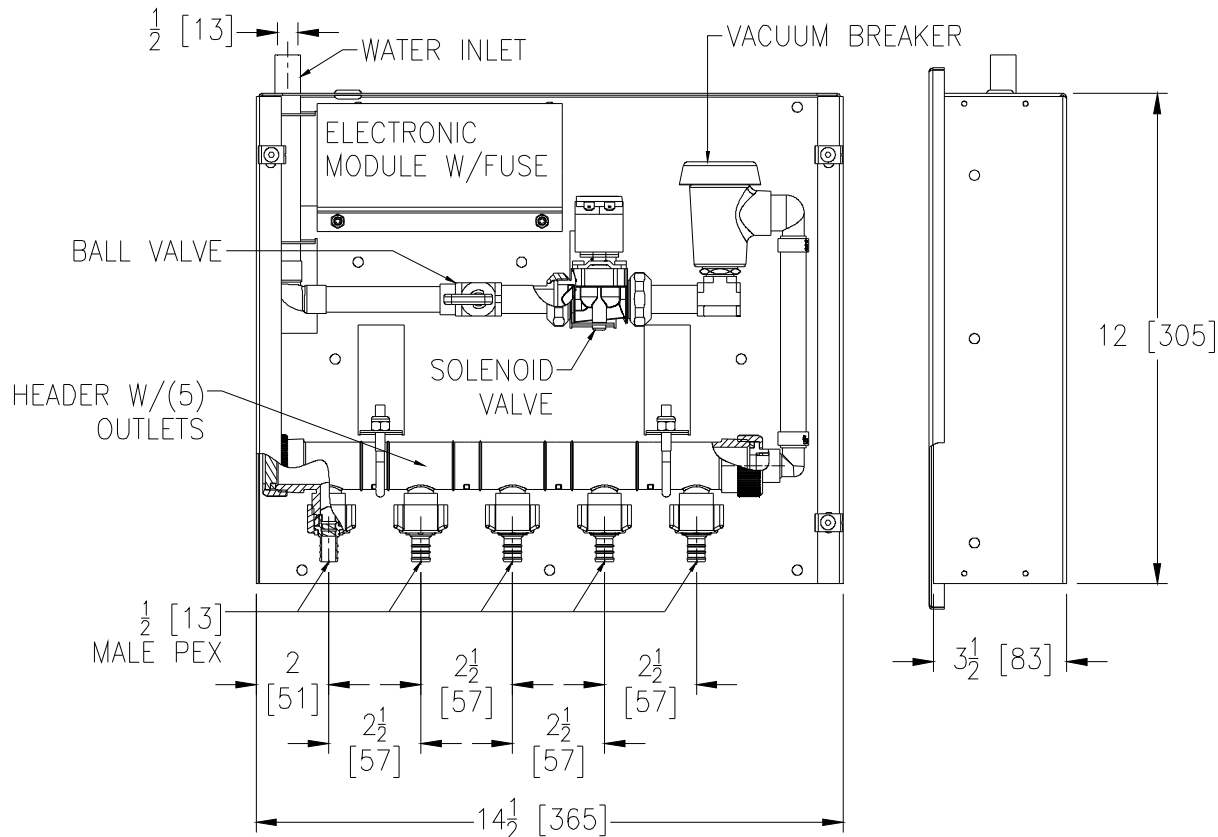


Z1020XL TSP ELECTRONIC TRAP PRIMER

SPECIFICATION SHEET

TAG _____

Dimensional Data (inches and [mm]) are Subject to Manufacturing Tolerances and Change Without Notice



Approx. Wt. Lbs. [kg]
12 [5]

ENGINEERING SPECIFICATION: ZURN Z1020XL

Factory programmed, 5-port, Lead-Free Electronic Trap Primer providing a six second water injection to traps every twenty-four hours*. Trap primer features a galvanized steel combination surface or recessed housing and cover, 1/2 [13] solder copper inlet connection, brass ball-type stop valve, slow closing 24 VAC solenoid valve with integral strainer, 120 - 24 VAC transformer, brass atmospheric vacuum breaker, PEX waterway, and anti-scaling multi-port manifold with five 1/2 [13] Male PEX outlet connections.

Zurn "XL" Lead-Free compliant products are a line of durable plumbing products designed and manufactured to comply with state laws and local codes that mandate maximum allowable lead content levels. Zurn "XL" products are manufactured in accordance to the Federal SWDA section 1417.

OPTIONS (Check/specify appropriate options)**SUFFIXES**

- ___ -CW Copper Waterway (with 1/2 [13] Female I.P.S. Connection)
- ___ -DU4 Additional Distribution Units with Copper Waterway (Specify Quantity)
(Contact Zurn for Sizing Specifications)
- ___ -VP Vandal-Proof Secured Cover with Vandal-Proof Driver
- ___ -10 Ten Outlets

Min. Pressure: 3 psi
Working Pressure: 20 to 100 psig
Default Settings:
-Frequency: 24 hours
-Injection Time: 6 seconds.
-Volume: 2 oz. min. per port

* Regularly furnished unless otherwise specified. Alternate flow settings available upon request.

Zurn Industries, LLC | Specification Drainage Operation
1801 Pittsburgh Avenue, Erie, PA U.S.A. 16502 · Ph. 855-663-9876, Fax 814-454-7929
In Canada | Zurn Industries Limited
3544 Nashua Drive, Mississauga, Ontario L4V 1L2 · Ph. 905-405-8272, Fax 905-405-1292
www.zurn.com

Rev. -
Date: 5/5/15
C.N. No. 132620
Prod. | Dwg. No. Z1020XL



Z887-24-HD

23-1/4 [591] WIDE REVEAL X 24-5/8 [625] LONG
CATCH BASIN WITH HEAVY DUTY FRAME

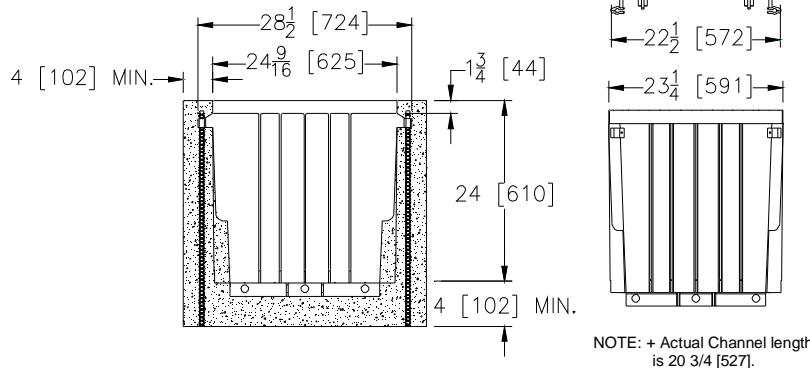
AD-1

SPECIFICATION SHEET

TAG _____

Dimensional Data (inches and [mm]) are Subject to Manufacturing Tolerances and Change Without Notice

SPECIFYING ENGINEER IS
RESPONSIBLE FOR CONCRETE
ENCASEMENT AND
REINFORCING BASED UPON
APPLICATION AND LOCAL CODES



ENGINEERING SPECIFICATION Zurn Z887-24-HD Catch Basin shall be 23-1/4 [591] wide reveal x 24-5/8 [625] long and 24 [610] deep. Catch basin shall be made of 0% water absorbent High Density Polyethylene (HDPE). Shall mechanically lock into the concrete surround. Basin shall weigh less than 20.0 lbs. [9.1 kg]. Catch basin shall have rebar clips standard to secure basin in its final location. Shall be provided with standard DGC grates that lock down to frame. Zurn 22-1/4 [565] wide reveal Ductile Iron Slotted Grate conforming to ASTM specification A536-84, Grade 80-55-06. Ductile Iron grate is rated class C per the DIN EN1433 top load classifications. Supplied in 24 [608] nominal lengths with 11/16 [17] wide slots, and 2-1/2 [64] bearing depth. Grate has an open area of 164.00 sq. in per ft. The 1/4 [6] thick Heavy-Duty Frame Assembly conforms to either ASTM specification A36 or A536-84, with 4 - 4 [102] long concrete anchors per basin. The frame is supplied with a powder coated finish. All welds must be performed by a certified welder per ASTM standard AWS D1.1. Frames Shall be produced in the U.S.A.

PREFIX OPTIONS (Check/specify appropriate options)

___ **Z** High Density Polyethylene (HDPE) Catch Basin with Heavy-Duty Frame*

SUFFIX OPTIONS (Check/specify appropriate options)

Adapters

___ -E3/U3	3 [76] No-Hub End/Bottom Outlet Adapter	___ -IA	Inlet Adapter (Z886)
___ -E4/U4	4 [102] No-Hub End/Bottom Outlet Adapter	___ -IA	Inlet Adapter (Z882)
___ -E6/U6	6 [152] No-Hub End/Bottom Outlet Adapter		

Grate Options (Load Classifications are per DIN EN1433)

___ -BDC	Black Acid Resistant Epoxy Coated Ductile Grate – Class C
___ -BDF	Black Acid Resistant Ductile Grate – Class F
___ -DGC	Ductile Iron Slotted Grate – Class C *
___ -DGF	Ductile Iron Slotted Grate – Class F
___ -GDC	Galvanized Ductile Slotted Grate – Class C
___ -GDF	Galvanized Ductile Grate – Class F
___ -GG	Fiberglass Grate - Class A

MADE in the U.S.A. (Load Classifications are per DIN EN1433)

___ -FG	Galvanized Steel Slotted Grate - Class A
___ -FS	Stainless Steel Slotted Grate - Class A
___ -PG	Galvanized Perforated Grate - Class A
___ -PS	Stainless Steel Perforated Grate - Class A
___ -RFG	Reinforced Galvanized Steel Slotted Grate - Class B
___ -RFS	Reinforced Stainless Steel Slotted Grate - Class B
___ -RPG	Reinforced Galvanized Perforated Grate - Class B
___ -RPS	Reinforced Stainless Steel Perforated Grate - Class B
___ -RPGR	Reinforced Stainless Steel Perforated Reverse Punch Anti-slip ADA Grate - Class B
___ -RPSR	Reinforced Stainless Steel Perforated Reverse Punch Anti-slip ADA Grate - Class B

Miscellaneous Options

___ -EXT	12 [305] Body Extension
___ -Y	Sediment Bucket
___ -CBF	Black Acid Resistant Coated Frame
___ -GFA	Galvanized Extra-Heavy-Duty Frame with Anchor Studs
___ -SF	Type 304 Stainless Steel Top Frame

* Regularly furnished unless otherwise specified.



Z887-24-HD CB-1

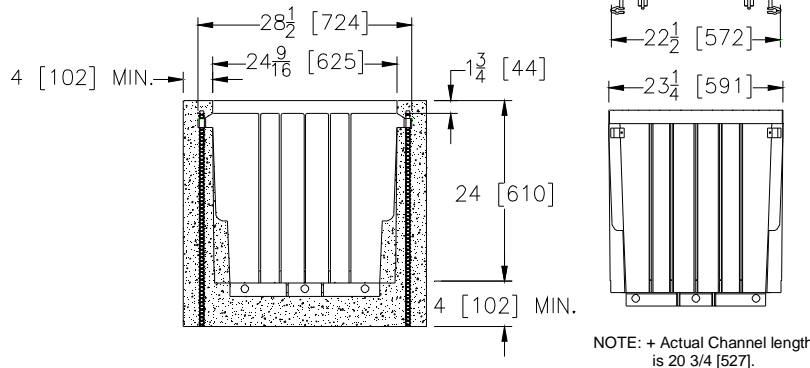
23-1/4 [591] WIDE REVEAL X 24-5/8 [625] LONG
CATCH BASIN WITH HEAVY DUTY FRAME

SPECIFICATION SHEET

TAG _____

Dimensional Data (inches and [mm]) are Subject to Manufacturing Tolerances and Change Without Notice

SPECIFYING ENGINEER IS
RESPONSIBLE FOR CONCRETE
ENCASEMENT AND
REINFORCING BASED UPON
APPLICATION AND LOCAL CODES



ENGINEERING SPECIFICATION Zurn Z887-24-HD Catch Basin shall be 23-1/4 [591] wide reveal x 24-5/8 [625] long and 24 [610] deep. Catch basin shall be made of 0% water absorbent High Density Polyethylene (HDPE). Shall mechanically lock into the concrete surround. Basin shall weigh less than 20.0 lbs. [9.1 kg]. Catch basin shall have rebar clips standard to secure basin in its final location. Shall be provided with standard DGC grates that lock down to frame. Zurn 22-1/4 [565] wide reveal Ductile Iron Slotted Grate conforming to ASTM specification A536-84, Grade 80-55-06. Ductile Iron grate is rated class C per the DIN EN1433 top load classifications. Supplied in 24 [608] nominal lengths with 11/16 [17] wide slots, and 2-1/2 [64] bearing depth. Grate has an open area of 164.00 sq. in per ft. The 1/4 [6] thick Heavy-Duty Frame Assembly conforms to either ASTM specification A36 or A536-84, with 4 - 4 [102] long concrete anchors per basin. The frame is supplied with a powder coated finish. All welds must be performed by a certified welder per ASTM standard AWS D1.1. Frames Shall be produced in the U.S.A.

PREFIX OPTIONS (Check/specify appropriate options)

___ **Z** High Density Polyethylene (HDPE) Catch Basin with Heavy-Duty Frame*

SUFFIX OPTIONS (Check/specify appropriate options)

Adapters

___ -E3/U3	3 [76] No-Hub End/Bottom Outlet Adapter	___ -IA	Inlet Adapter (Z886)
___ -E4/U4	4 [102] No-Hub End/Bottom Outlet Adapter	___ -IA	Inlet Adapter (Z882)
___ -E6/U6	6 [152] No-Hub End/Bottom Outlet Adapter		

Grate Options (Load Classifications are per DIN EN1433)

___ -BDC	Black Acid Resistant Epoxy Coated Ductile Grate – Class C
___ -BDF	Black Acid Resistant Ductile Grate – Class F
___ -DGC	Ductile Iron Slotted Grate – Class C *
___ -DGF	Ductile Iron Slotted Grate – Class F
___ -GDC	Galvanized Ductile Slotted Grate – Class C
___ -GDF	Galvanized Ductile Grate – Class F
___ -GG	Fiberglass Grate - Class A

Miscellaneous Options

___ -EXT	12 [305] Body Extension
___ -Y	Sediment Bucket
___ -CBF	Black Acid Resistant Coated Frame
___ -GFA	Galvanized Extra-Heavy-Duty Frame with Anchor Studs
___ -SF	Type 304 Stainless Steel Top Frame

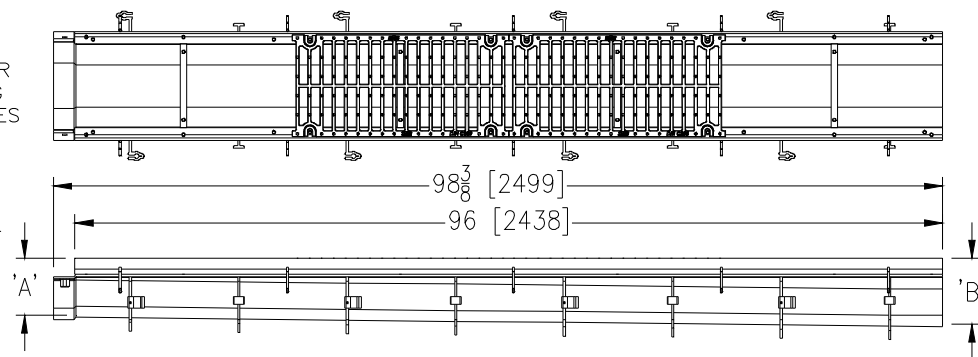
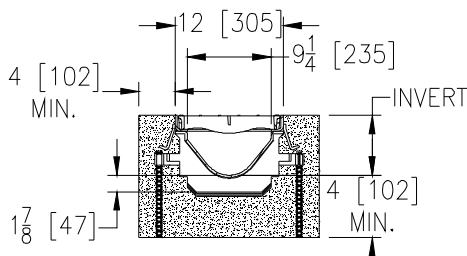
MADE in the U.S.A. (Load Classifications are per DIN EN1433)

___ -FG	Galvanized Steel Slotted Grate - Class A
___ -FS	Stainless Steel Slotted Grate - Class A
___ -PG	Galvanized Perforated Grate - Class A
___ -PS	Stainless Steel Perforated Grate - Class A
___ -RFG	Reinforced Galvanized Steel Slotted Grate - Class B
___ -RFS	Reinforced Stainless Steel Slotted Grate - Class B
___ -RPG	Reinforced Galvanized Perforated Grate - Class B
___ -RPS	Reinforced Stainless Steel Perforated Grate - Class B
___ -RPGR	Reinforced Stainless Steel Perforated Reverse Punch Anti-slip ADA Grate - Class B
___ -RPSR	Reinforced Stainless Steel Perforated Reverse Punch Anti-slip ADA Grate - Class B

* Regularly furnished unless otherwise specified.

**Z882-HDF** ← **TD-1****SPECIFICATION SHEET****12 [305] WIDE REVEAL TRENCH DRAIN SYSTEM
WITH STEEL FRAME****TAG** _____

Dimensional Data (inches and [mm]) are Subject to Manufacturing Tolerances and Change Without Notice

SPECIFYING ENGINEER IS RESPONSIBLE FOR
CONCRETE ENCASEMENT AND REINFORCING
BASED UPON APPLICATION AND LOCAL CODES**Note:** + Actual Channel length is 98 3/8 [2499] to allow for overlap.

ENGINEERING SPECIFICATION: Zurn Z882-HDG Channels shall be 96 [2438] long, 12 [305] wide reveal and have a 9-1/4 [235] throat. Modular channel sections shall be made of 0% water absorbent High Density Polyethylene (HDPE). Shall have a positive mechanical connection between channel sections that will not separate during the installation and shall mechanically lock into the concrete surround every 12 [305]. Channels shall weigh less than 5.05 lbs. [2.29kg] per linear foot, have a smooth, 3 [76] radiused self cleaning bottom with a Manning's coefficient of 0.009 and 1.04% or neutral 0% built in slope. Channels shall have all grates locked down. Shall have rebar clips standard to secure trench in its final location. Shall be provided with the standard GDC grate that locks down to the frame. Zurn 12 [305] wide reveal Galvanized Ductile Iron Slotted Grate. Ductile Iron conforms to ASTM specification A536-84, Grade 80-55-06. Galvanized Ductile Iron grate is rated class C per the DIN EN1433 top load classifications. Supplied in 24 [608] nominal lengths with 13/16[21] wide slots, and 1-1/2 [38] bearing depth. Grate has an open area of 57.50 sq. in. per ft. [121708 sq. mm per meter]. The 1/4 [6] thick Galvanized Carbon Steel Frame Assembly conforms to ASTM specification A36 and Galvanizing conforms to ASTM specification A123 with 10 - 4 [102] long concrete anchors per 96 [2438]. Grate lockdown bars are integral to the frame. All welds must be performed by a certified welder per ASTM standard AWS D1.1. Frames Shall be produced in the USA.

PREFIX OPTIONS (Check/specify appropriate options)

___ **Z** Eight-foot High Density Polyethylene (HDPE) Channel, Heavy-Duty Frame with Anchor Studs.*

SUFFIX OPTIONS (Check/specify appropriate options)**Outlet Adapters Add/Each**

___ **-E1** Closed End Cap ___ **-U4** 4 [102] No-Hub Bottom Outlet
___ **-E4** 4 [102] No-Hub End Outlet ___ **-U6** 6 [152] No-Hub Bottom Outlet
___ **-E6** 6 [152] No-Hub End Outlet ___ **-U8** 8 [203] No-Hub Bottom Outlet
___ **-E8** 8 [203] No-Hub End Outlet

Grate Options (Load Classifications are per DIN EN1433)

___ **-BDC** Black Acid Resistant Epoxy Coated Ductile Grate - Class C
___ **-BDE** Black Acid Resistant Epoxy Coated Ductile Grate - Class E
___ **-DC** Ductile Iron Solid Cover - Class C
___ **-DGC** Ductile Iron Slotted Grate - Class C
___ **-DGE** Ductile Iron Slotted Grate - Class E
___ **-DGF** Ductile Iron Slotted Grate - Class F
___ **-GDC** Galvanized Ductile Slotted Grate - Class C *
___ **-GDE** Galvanized Ductile Slotted Grate - Class E
___ **-GDF** Galvanized Ductile Slotted Grate - Class F
___ **-GHPD** Galvanized Heel-Proof Ductile Grate - Class B
___ **-GHPDE** Galvanized Heel-Proof Ductile Slotted Grate - Class E
___ **-HPD** Heel-Proof Ductile Slotted Grate - Class B
___ **-HPDE** Heel-Proof Ductile Slotted Grate - Class E

Trench No.	'A' Shallow Inv.	'B' Deep Inv.	Flow		
			(cfs)	(gpm)	(lps)
8201	6.25 [159]	7.25 [184]	1.241	557	35
8202	7.25 [184]	8.25 [210]	1.725	774	49
8203	8.25 [210]	9.25 [235]	2.226	999	63
8203N	9.25 [235]	9.25 [235]	-	-	-
8204	9.25 [235]	10.25 [260]	2.745	1232	78
8205	10.25 [260]	11.25 [286]	3.271	1468	93
8206	11.25 [286]	12.25 [311]	3.808	1709	108
8206N	12.25 [311]	12.25 [311]	-	-	-
8207	12.25 [311]	13.25 [337]	4.347	1951	123
8208	13.25 [337]	14.25 [362]	4.893	2196	139
8209	14.25 [362]	15.25 [387]	5.443	2443	155
8209N	15.25 [387]	15.25 [387]	-	-	-
8210	15.25 [387]	16.25 [413]	5.996	2691	170
8211	16.25 [413]	17.25 [438]	6.551	2940	186
8212	17.25 [438]	18.25 [464]	7.106	3189	202

Miscellaneous Options (cont.)

___ **-GFA** Galvanized Frame Assembly
___ **-JC** Joint Connector
___ **-SW** Sidewall Extensions - 11 [279] High
___ **-SW2** Double Sidewall Extensions - 22 [559] High
___ **-VP** Vandal-Proof Lockdown

MADE in the U.S.A.

___ **-ADA-USA** Meets Americans with Disabilities Act Requirements - Class C
___ **-BG** Galvanized Steel Bar Grate - Class D
___ **-DGC-USA** Ductile Iron Slotted Grate - Class C
___ **-DGE-USA** Ductile Iron Slotted Grate - Class E
___ **-FG** Fabricated Galvanized Steel Slotted Grate - Class A
___ **-GADA-USA** Galvanized Ductile ADA Slotted Grate - Class C
___ **-GDC-USA** Galvanized Ductile Slotted Grate - Class C
___ **-GDE-USA** Galvanized Ductile Slotted Grate - Class E
___ **-GG** Fiberglass Grate - Class A
___ **-PG** Perforated Galvanized Steel Grate - Class A
___ **-RFG** Reinforced Galvanized Slotted Grate - Class B
___ **-RPG** Reinforced Galvanized Perforated Grate - Class B

Miscellaneous Options

___ **-DB** Bottom Dome Strainer

*REGULARLY FURNISHED UNLESS OTHERWISE SPECIFIED

REV. C DATE: 7/15/11 C.N. NO. 121593**DWG. NO. 301769 PRODUCT NO. Z882-HDG**

ZURN INDUSTRIES, LLC ♦ SPECIFICATION DRAINAGE OPERATION ♦ 1801 Pittsburgh Ave. ♦ Erie, PA 16514

Phone: 814/455-0921 ♦ Fax: 814/454-7929 ♦ World Wide Web: www.zurn.com

In Canada: ZURN INDUSTRIES LIMITED ♦ 3544 Nashua Drive ♦ Mississauga, Ontario L4V1L2 ♦ Phone: 905/405-8272 Fax: 905/405-1292



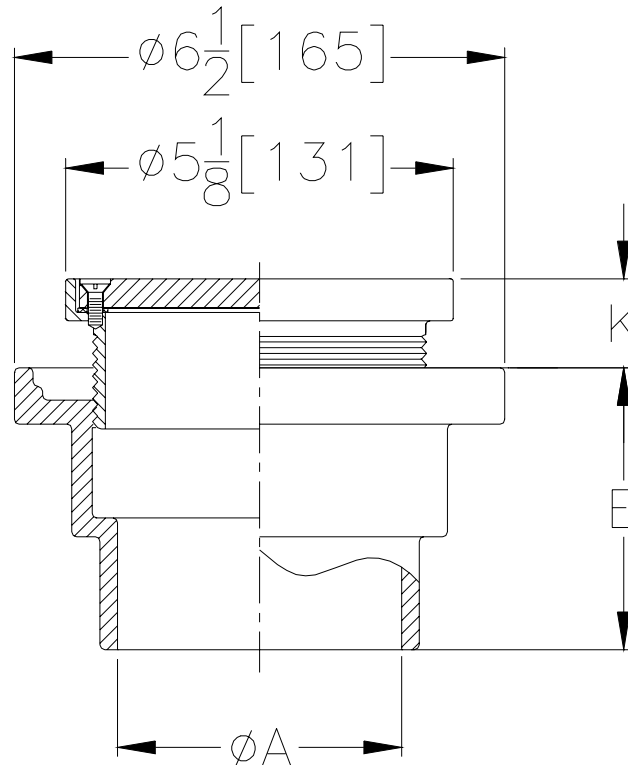
ZXN-1612 CO
**ADJUSTABLE ROUND HEAVY-DUTY
NICKEL BRONZE CLEANOUT**

SPECIFICATION SHEET

TAG _____



Dimensional Data (inches and [mm]) are Subject to Manufacturing Tolerances and Change Without Notice



Pipe Size Inches / [mm]	Approx. Wt. Lbs. / [kg]	K	
		Min.	Max.
2-3-4 [51-76-102]	8 [4]	1/2 [13]	1-3/8 [35]

ENGINEERING SPECIFICATION: ZURN ZXN-1612 Adjustable Floor Cleanout, Dura-Coated cast iron body with neoprene body sleeve, polished nickel bronze adjustable head and gasketed, secured, scoriated heavy-duty cover with stainless steel screws.

OPTIONS (Check/specify appropriate options)

PIPE SIZE

2,3,4 [51,76,102]

(Specify size/type) **OUTLET**

_____ **NH** **No-Hub**

E BODY HT. DIM.

3-3/4" [95mm]

PREFIXES

_____ **ZX-** Heavy-Duty Cast Iron Top

SUFFIXES

_____ **-CM** Carpet Marker
_____ **-G** Galvanized
_____ **-SP** Seal Plug
_____ **-VP** Vandal-Proof Screws
_____ **-1600** Wide Flange Body

REV. A DATE: 06/16/05 C.N. NO. 89834

DWG. NO. 63650 PRODUCT NO. ZXN-1612

*REGULARLY FURNISHED UNLESS OTHERWISE SPECIFIED



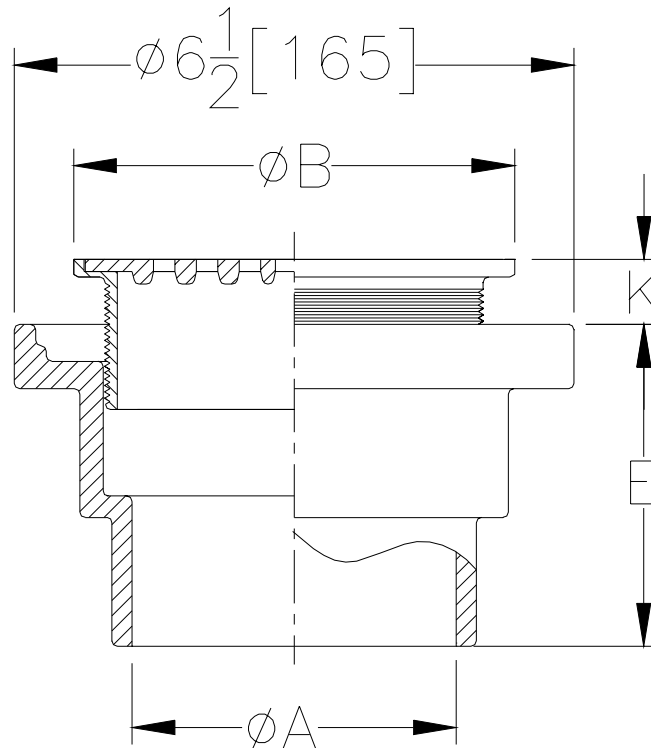
ZXN-211-A FD-1
**BODY ASSEMBLY
WITH "TYPE A" STRAINER**

SPECIFICATION SHEET

TAG _____



Dimensional Data (inches and [mm]) are Subject to Manufacturing Tolerances and Change Without Notice



Str. Desig.	Dimensions In Inches / [mm]				Approx. Wt. Lbs. / [kg]	Strainer Open Area Sq. In. / [sq cm]
	A Pipe Size	B Str. Dia.	K			
			Min.	Max.		
-A5	2 - 3 - 4 [51 - 76 - 102]	5 [127]	1/4 [6]	1-1/4 [32]	8 [4]	7 [45]
-A6	2 - 3 - 4 [51 - 76 - 102]	6 [152]	3/4 [19]	1-5/8 [41]	9 [4]	11 [71]

ENGINEERING SPECIFICATION: ZURN ZXN-211-A Floor and Shower Drain, Dura-Coated cast iron body with bottom outlet, adjustable "Type A" heavy-duty polished nickel bronze round strainer.

OPTIONS (Check/specify appropriate options)

PIPE SIZE

2,3,4 [50,75,100]

(Specify size/type) **OUTLET**

_____ **NH** No-Hub

E BODY HT. DIM.

3 3/4 [95]

SUFFIXES

_____ -G Galvanized Cast Iron
_____ -P 1/2" [13] Trap Primer Connection
_____ -VP Vandal-Proof Secured Top
_____ -X Squeezin Backwater Valve
_____ -Y Sediment Bucket
_____ -210 8" [203] Wide Flange Body

*REGULARLY FURNISHED UNLESS OTHERWISE SPECIFIED

REV. DATE: 11/15/99 C.N. NO. 83320

DWG. NO. 63608 PRODUCT NO. ZXN-211-A



Z-556 ← FFD-1

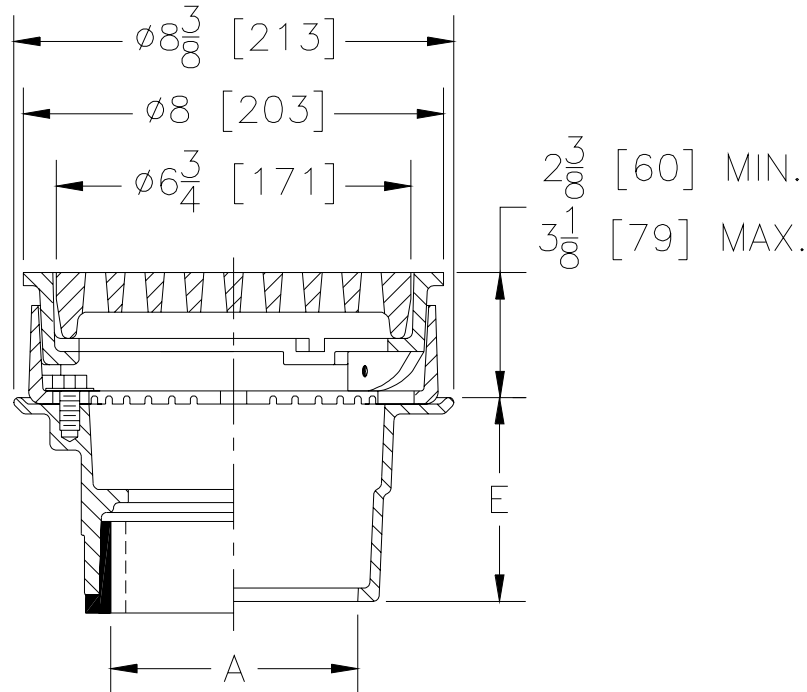
SPECIFICATION SHEET

8" [203mm]

ADJUSTABLE HEAVY-DUTY DRAIN TAG _____



Dimensional Data (inches and [mm]) are Subject to Manufacturing Tolerances and Change Without Notice



A Pipe Size Inches / [mm]	Approx. Wt. Lbs. / [kg]	Grate Open Area Sq. In. / [sq cm]
2-3-4-6 [51-76-102-152]	19 [9]	11 [71]

ENGINEERING SPECIFICATION: ZURN Z-556 8" [203mm] diameter heavy-duty floor drain, Dura-Coated cast iron bottom outlet body, seepage pan and combination membrane flashing clamp and frame for heavy-duty anti-tilt cast iron grate.

OPTIONS (Check/specify appropriate options)**PIPE SIZE**

2,3,4 [50,75,100]
2,3,4 [50,75,100]
2,3,4,6 [50,75,100,152]
2,3,4 [50,75,100]
2,3,4 [50,75,100]

(Specify size/type) **OUTLET**

_____ IC Inside Caulk
_____ IG Inside Gasket
_____ IP Threaded
_____ **NH No-Hub**
_____ NL Neo-Loc

E BODY HT. DIM.

3 7/8 [98]
3 7/8 [98]
2 5/8 [67]
3 7/8 [98]
4 5/8 [117]

PREFIXES

_____ **Z-** D.C.C.I. Body with Grate*
_____ **ZN-** D.C.C.I. Body with Polished Nickel Bronze Top*

*Add 3/16" [5mm] to Min./Max. Dimension

SUFFIXES

_____ **-AR** Acid-Resisting Epoxy Coated Cast Iron
_____ **-FO** 3-1/2" x 9" [89 x 229] Funnel
_____ **-FS** Floating Slab
_____ **-G** Galvanized
_____ **-P** 1/2" [13mm] Trap Primer Connection

_____ **-VP** Vandal-Proof Secured Top
_____ **-X** Squeeze Backwater Valve
_____ **-Y** **Sediment Bucket**
_____ **-6NH** 6" [152mm] No-Hub Outlet (IP w/ Z-1040)
_____ **-90** 90° Threaded Side Outlet Body (IP or NH only)

*REGULARLY FURNISHED UNLESS OTHERWISE SPECIFIED

REV. A DATE: 2/14/00 C.N. NO. 84101

DWG. NO. 65047 PRODUCT NO. Z-556

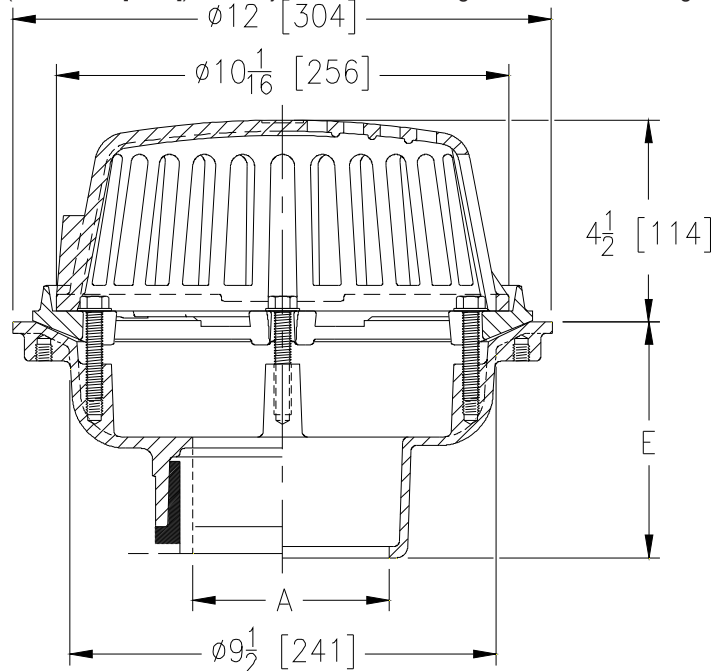


Z121 ← **RD-1**
12 [305] DIAMETER ROOF DRAIN
LOW SILHOUETTE DOME

SPECIFICATION SHEET

TAG _____

Dimensional Data (inches and [mm]) are Subject to Manufacturing Tolerances and Change Without Notice



A Pipe Size In.[mm]	Approx. Wt. Lbs. [kg]	Dome Open Area Sq. In. [cm ²]
2,3,4,6 [51,76,102,152]	22 [10]	78 [503]

ENGINEERING SPECIFICATION: ZURN Z121

12" [305mm] Diameter roof drain. Dura-Coated cast iron body with combination membrane flashing clamp/gravel guard and low silhouette Poly-Dome.

OPTIONS (Check/specify appropriate options)

PIPE SIZE

2, 3, 4, 6 [51, 76, 102, 152]
2, 3, 4, 6 [51, 76, 102, 152]
2, 3, 4, 6 [51, 76, 102, 152]
2, 3, 4 [51, 76, 102]

(Specify size/type) **OUTLET**

_____ IC Inside Caulk
_____ IP Threaded
_____ **NH** **No-Hub**
_____ NL Neo-Loc

E BODY HT. DIM.

5-1/4 [133]
3-3/4 [95]
5-1/4 [133]
4-5/8 [117]

PREFIXES

_____ **Z** D.C.C.I. Body with Poly-Dome (4-1/4 [108] Dome Height)*
_____ ZA D.C.C.I. Body with Aluminum Dome (6-9/16 [167] Dome Height)
_____ ZC D.C.C.I. Body with Low Silhouette Cast Iron Dome

SUFFIXES

_____ -AR Acid Resistant Epoxy Coated Finish
_____ -C Underdeck Clamp
_____ -DB Deep Sump Body (IC Only)
_____ **-DP** **Top-Set® Roof Deck Plate**
(Replaces both the -C and -R)
_____ -E 2 [51] High Static Extension (Specify Height)
_____ -EB Top-Set® Adjustable Extension Assembly
_____ -FG Flush Grate
_____ -G Galvanized Cast Iron
_____ -R Roof Sump Receiver
_____ -SC Secondary Clamping Collar
_____ -SS Stainless Steel Mesh Screen Over Dome
_____ -TC Neo-Loc Test Cap Gasket
(2, 3, 4 [51, 76, 102] NL Bottom Outlet Only)

_____ -VP Vandal-Proof Secured Top
_____ -XJ Vertical Expansion Joint (See Z190)
_____ **-84** **Stainless Steel Perforated Gravel Guard**
_____ -85 Stainless Steel Perforated Extension
_____ -89 2 [51] High External Water Dam
_____ -90 90° Threaded Side Outlet Body
(2, 3, 4 [51, 76, 102]) (Previously Z124)

* Regularly furnished unless otherwise specified.