

SHOP DRAWING PACKAGE

Prepared for
CONSULT MECHANICAL

MARTINREA PLANT EXPANSION - 99 GOLF COURSE LINE

AUG 22, 2024

**Z5110****20" x 17" Countertop Lavatory**

LAV-1

TAG _____

Architectural/Engineering Specification:

20" x 17" vitreous china, self-rimming, countertop lavatory

Product Features:

- 20" [508 mm] x 17" [432 mm]
- Vitreous china
- Faucet holes for single, 4" or 8" centers
- Self-rimming front overflow design
- Waste: 1-1/4" O.D.
- Depth: 6-5/8"
- Shipping Weight: 22 lbs.

Suffix Options:

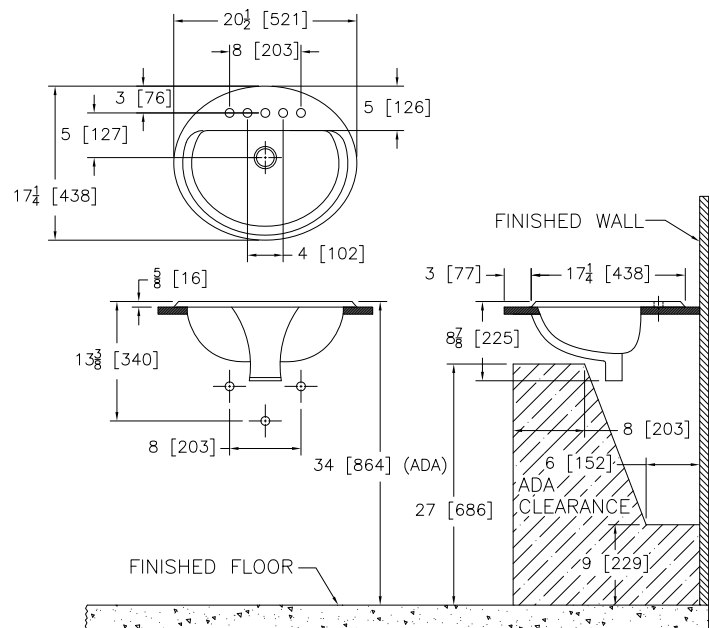
- LS Left Side Soap Hole (Z5111 only)
- RS Right Side Soap Hole (Z5111 only)

Recommended Trim:

- Z8743-PC Grid Strainer
- Z8700 Series P-Trap
- Z8800 Series Top with Flexible Supplies
- Z8946-1-NT ADA Trap, Stop, and Supply Protectors

Optional Trim:

- Z8746-PC ADA Grid Strainer
- Z8946-3-NT ADA Trap, Stop, and Supply Protectors for Offset Grid Strainer

**Configurations:****Z5111****Lavatory with single faucet hole****Z5114****Lavatory with 4" center faucet holes****Z5118****Lavatory with 8" center faucet holes**

See Zurn One Systems for suggested packages.

Architectural/Engineering Approval

The information contained in this document is subject to change without notice.
Please contact Zurn for most up to date information.

Compliance and Certification:

- ADA Compliant

**Rough-in/Overview dimensions for Z5110 Series****Z5111 Lavatory with single hole faucet****Z5114 Lavatory with 4" center faucet holes****Z5118 Lavatory with 8" center faucet holes**

Meets the American Disabilities Guidelines and ANSI A117.1 requirements when installed 34" [864mm] from finished floor. Fixture dimensions meet ASME A112.19.2/CSA B45.1 requirements. In Canada - Consult local codes and standards.



Z6950-XL-S

Aqua-FIT® Battery Powered Faucet



Patented and Patent Pending

Flow Control Options

- ☐ **E*** 1.5 gpm/ 5.7 Lpm Vandal-Resistant Aerator
- ☒ **F** 0.5 gpm/1.9 Lpm Vandal-Resistant Non-Aerated
- ☐ **J*** 1.5 gpm/ 5.7 Lpm Vandal-Resistant Laminar Flow
- ☐ **K*** 1.0 gpm/ 3.8 Lpm Vandal-Resistant Laminar Flow
- ☐ **L*** 1.0 gpm/ 3.8 Lpm Vandal-Resistant Aerator
- ☐ **M** 0.35 gpm/1.3 Lpm Vandal-Resistant Non-Aerated
- ☐ **N** 0.5 gpm/ 1.9 Lpm Vandal-Resistant Laminar Flow

Power Supply Choices (Sold Separately)

- ☐ **-ACA** 6 VDC Plug-In Power Converter
- ☐ **-HW6** Hardwired Power Converter
- ☐ **-LL** "10 Year Battery" - Long Life

Optional Power Supply Accessories

- ☐ **-CWB** Connector Wire for Hardwire Install
- ☐ **-MJ** Mini Junction Box

NOTE: For Hardwire applications furnish P6000-HW6 power converter. Order P6000-HW6 power converter separately.
The P6000-HW6 and P6000-MJ will power up to 8 sensor faucets.

Architectural/Engineering Approval

The information contained in this document is subject to change without notice.
 Please contact Zurn for most up to date information.

ZURN INDUSTRIES, LLC. ♦ COMMERCIAL BRASS OPERATION
 5900 ELWIN BUCHANAN DRIVE ♦ SANFORD NC 27330
 PHONE: 1-800-997-3876 ♦ FAX: 919-775-3541
 WWW.ZURN.COM
 IN CANADA: ZURN INDUSTRIES LIMITED
 7900 GOREWAY DRIVE UNIT 10 ♦ BRAMPTON, ONTARIO L6T5W6
 PHONE: 905-405-8272 FAX: 905-405-1292

Aqua-FIT® is a trademark of Zurn Industries, LLC.

Engineering Specification

ADA compliant, battery powered, chrome plated sensor faucet for retrofit and new construction.

- Customizable Settings
 - Time-out
 - Line Purge
 - Sensor Range
 - Metering Mode
- Occupant Detection
 - Infrared convergence-type proximity sensor
 - Thirty Second Time out feature
- Spout module
 - Chrome Plated Cast Brass
- Also Includes
 - In-line filter
 - 4 "AA" batteries
 - Inlet for a 1/2"[13] ball riser

Accessories

- ☐ **-5S** 5 sec. Timeout
- ☐ **-10S** 10 sec. Timeout
- ☐ **-15S** 15 sec. Timeout
- ☐ **-60S** 60 sec. Timeout
- ☐ **-ADM** Above Deck Mixer
- ☐ **-CP4** Cover Plate 4"[102] Centers
- ☐ **-CP8** Cover Plate 8"[203] Centers
- ☐ **-H4** Wrist Blade Handle for ADM
- ☐ **-LP12** Line Purge 2 min/12 hr
- ☐ **-LP24** Line Purge 2 min/24 hr
- ☐ **-LP48** Line Purge 2 min/48 hr
- ☐ **-MT** Mixing Tee
- ☐ **-MV** Temperature Mixing Valve
- ☐ **-SH** Supply Hoses for Mixing Valve
- ☐ **-SSH** Single Supply Hose
- ☐ **-TMV** Thermostatic Mixing Valve for Multiple Faucets
- ☐ **-TMV-1** Thermostatic Mixing Valve for Single Faucets
- ☐ **-** Other

* This product should be used with a WaterSense labeled counterpart with a compatible flush volume to ensure that the entire system meets the requirements for water efficiency and performance.

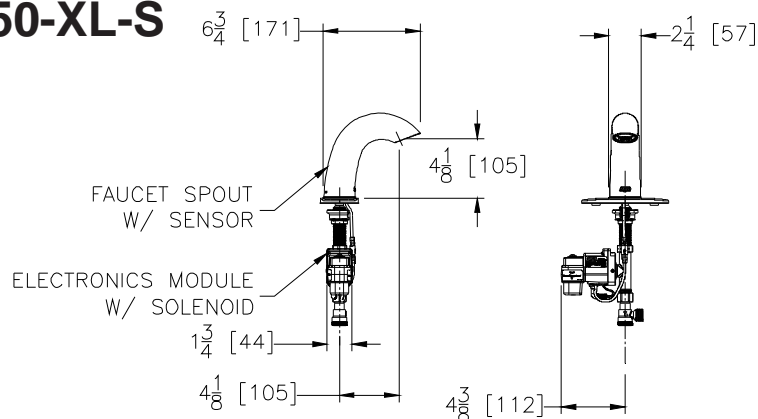
Zurn Lead Free products (-XL) is the line of durable, high quality brass faucets and fixtures that are designed and manufactured to comply with Section 1417 of the Safe Drinking Water Act (SDWA) which mandates the weighted average lead content of no more than 0.25% of the wetted surface.



TYPICAL Z6950-XL-S

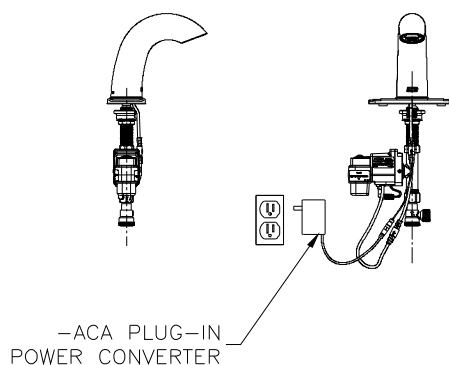
AquaSense Battery Powered Faucet

NOTE: Recommended through hole diameter to properly mount the spout/shank is 1-1/8" to 1-1/4".

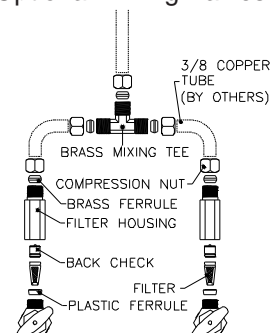


TYPICAL Z6950-XL-S-ACA

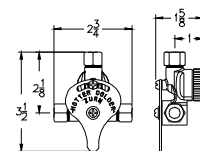
AquaSense Plug-In Powered Faucet



Optional Mixing Valves



P6900-MT
Mixing Tee



P6900-MV
Temperature Mixing Valve

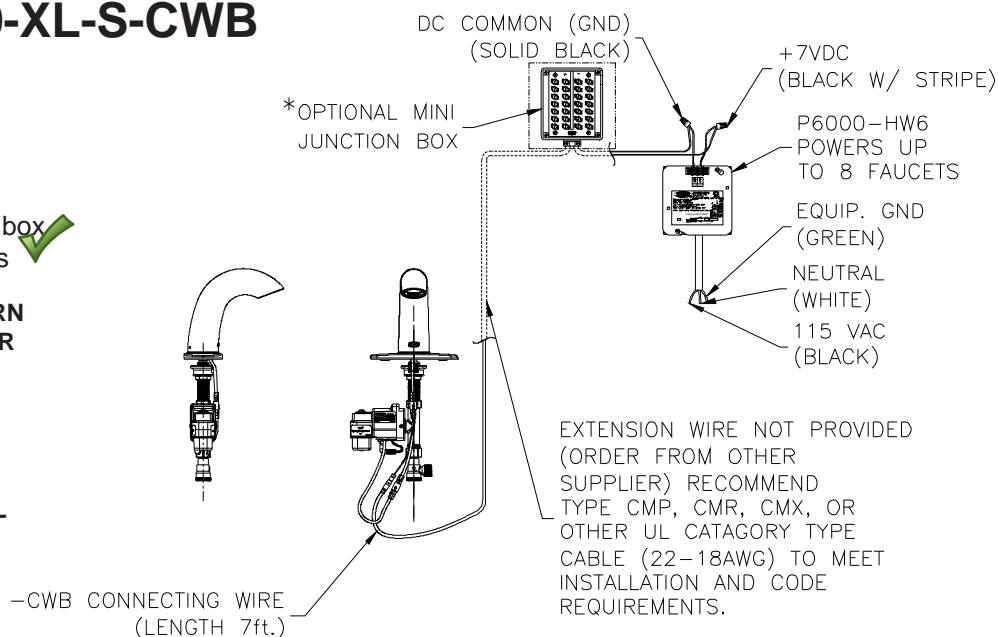
TYPICAL Z6950-XL-S-CWB

AquaSense Hardwire Powered Faucet

Optional:

* Optional -MJ mini junction box for connecting up to 8 faucets

NOTE: MUST USE EITHER ZURN P6000-HW6 HARDWIRE POWER CONVERTER OR ZURN P6000-ACA PLUG-IN POWER CONVERTER TO ENSURE PROPER OPERATION. USING A POWER CONVERTER OTHER THAN ZURN MAY RESULT IN OPERATION MALFUNCTION OR UNIT FAILURE.



THERMOSTATIC MIXING VALVE

ECO-MIX™

MODEL 170-LF

LEAD FREE THERMOSTATIC POINT OF USE MIXING VALVE

MODEL 3/8" inlets, 3/8" outlet,
compression connections

MATERIALS:

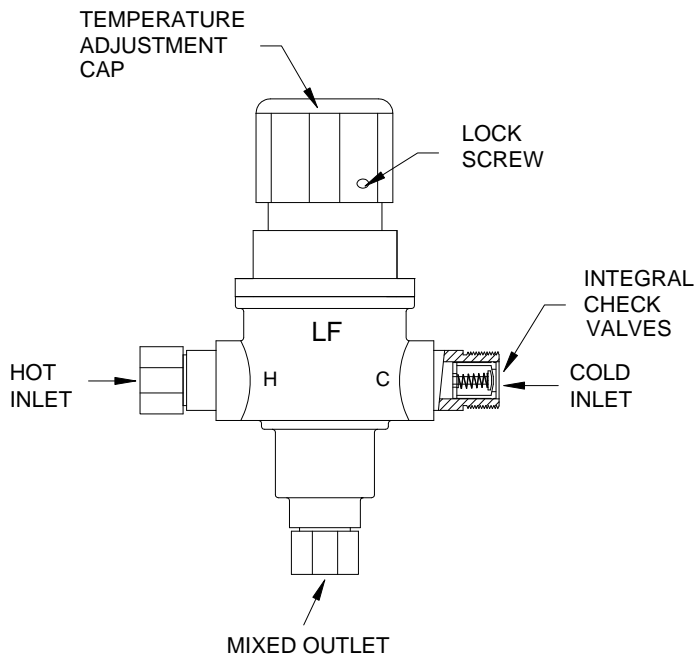
- Lead Free Bronze body
- Locked temperature adjustment cap (vandal resistant)
- Copper encapsulated thermostat assembly with polymer thermoplastic shuttle
- Stainless steel springs
- Buna-N O-rings
- Integral check valves on hot and cold inlets
- Compression fittings on inlets and outlet

PRESSURE-TEMPERATURE:

- Minimum Flow: 0.25 GPM (.95 l/min)
- Maximum Pressure: 125 PSI (8.6 BAR)
- Maximum Hot Water temperature: 200°F (93°C)
- Approach Temperature 5°F (2.8°C) above set point.
- Temperature adjustment range, 90-140°F (32-60°C) **

OPTIONS:

- ___ BP- Cold water By-Pass (shipped loose)
- ___ CP- Chrome Plated
- ___ BRKT- Mounting Bracket (shipped loose)



MINIMUM FLOW	PRESSURE DROP						PSI
	5	10	20	30	40	50	
	.35	.70	1.4	2.1	2.8	3.4	BAR
0.25	1.7	2.3	3.0	3.6	4.4	5.0	GPM
0.95	6.4	8.7	11.4	14	17	19	l/min



WARNING: This product can expose you to chemicals including lead, which is known to the State of California to cause cancer. For more information, go to www.P65Warnings.Ca.gov

****NOTE:** For temperatures outside of this valve's stated range, please see our line of bi-metal valves.

Engineer's Approval	Job # _____
	Arch/Eng. _____
	Contractor _____

ASSE 1070 CERTIFIED

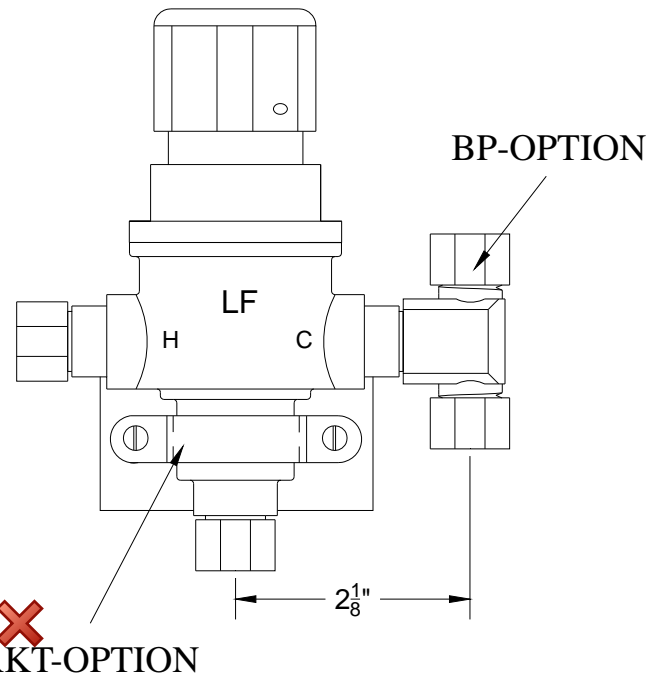
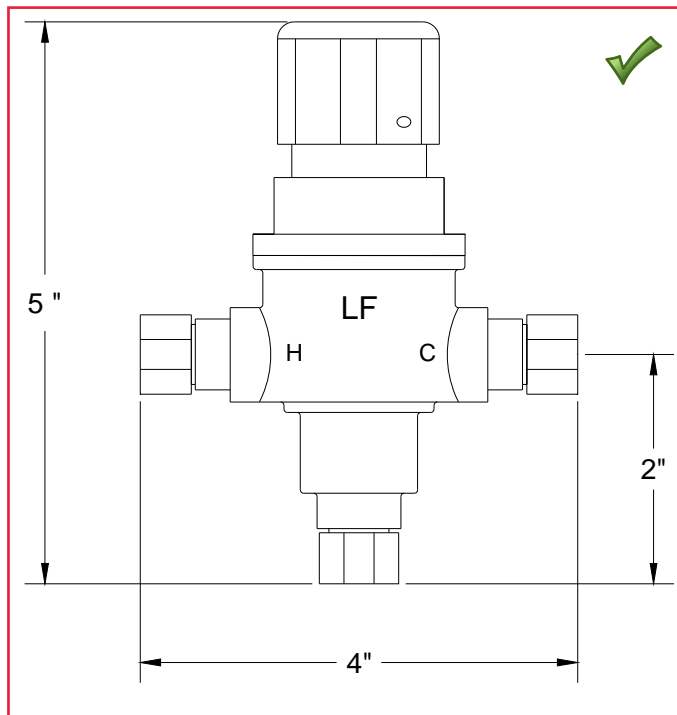


This product is certified to meet Low Lead requirements of wetted surface area containing less than 0.25% lead by weight

* 0.25 GPM minimum flow certified to ASSE 1070

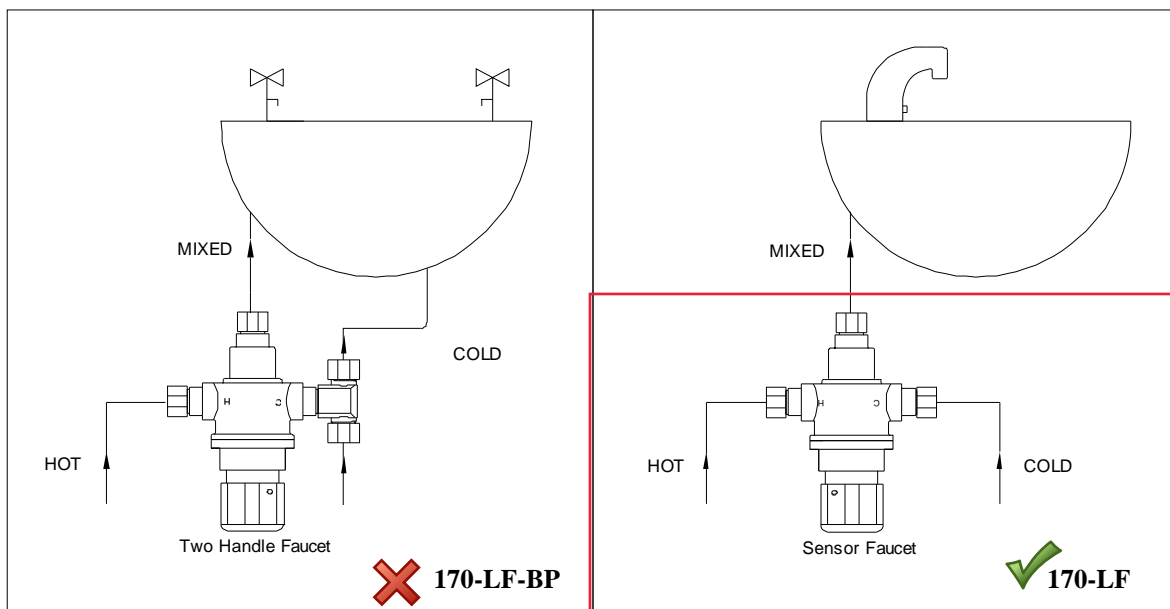


1360 Elmwood Avenue, Cranston, RI 02910 USA
Phone: 401.461.1200 Fax: 401.941.5310
Email: info@leonardvalve.com
Web Site: <http://www.leonardvalve.com>



APPLICATION

The Model 170-LF is a high performance Temperature Actuated Mixing Valve used to supply single outlets. Can be used to supply one sensor faucet or one two handle manual faucet.



Note: Leonard Valve Company reserves the right of product, or design modifications without notice or obligation.

LEONARD
WATER TEMPERATURE CONTROLS

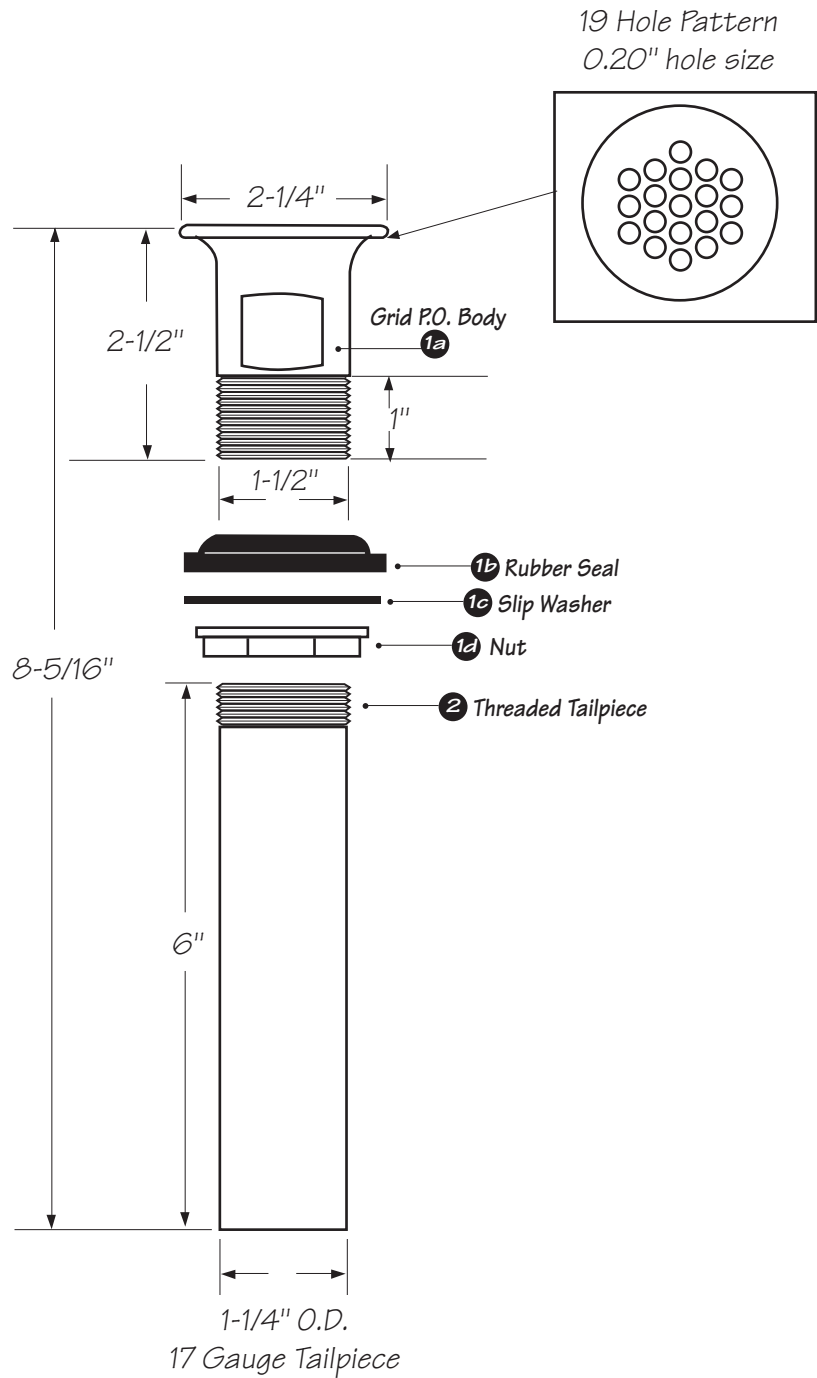
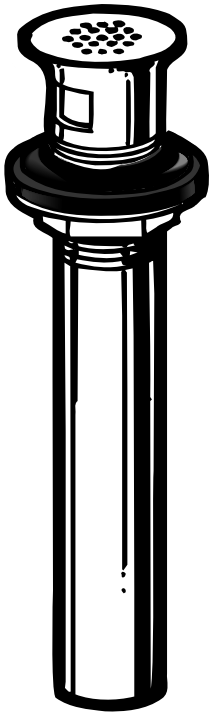
1360 Elmwood Avenue, Cranston, RI 02910 USA

Phone: 401.461.1200 Fax: 401.941.5310

Email: info@leonardvalve.com

Web Site: <http://www.leonardvalve.com>

© 2018 Leonard Valve Company
Printed in USA



1	370	Grid P.O. Body Assembly	<div>OS&B</div> <div>OAKVILLE STAMPING & BENDING</div>		
			Date: March 31/00	Approved by:	Drawn by: S.Black
2	4831-6	17 Gauge Tailpiece	Scale: not to scale		Revision: 01
			Product: P.O. Plug		Number: 3700



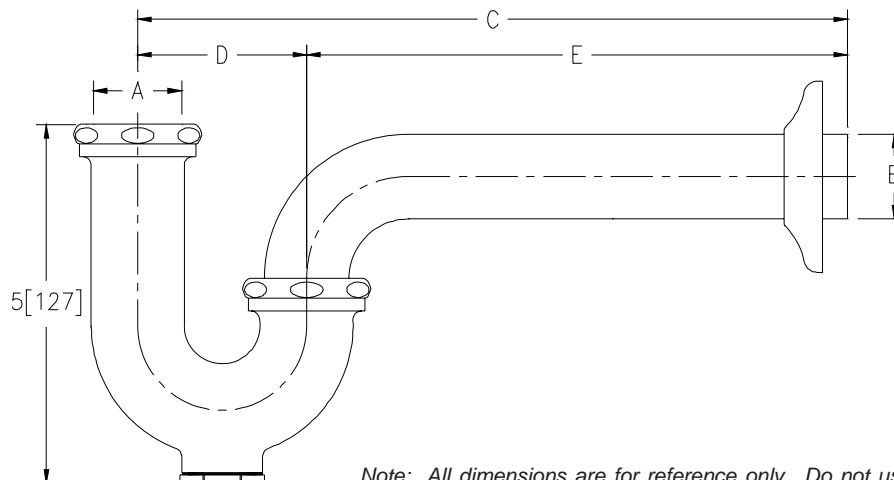
SEMI-CAST P-TRAPS WITH WALL BEND

Z8700-PC TO Z8708-PC

TAG



Engineering Specification: Zurn Z8700-PC to Z8708-PC. – Chrome-plated cast brass (copper alloy) body P-trap with cleanout, tubular brass wall bend as specified, die-cast nuts, and shallow escutcheon with compression inlet.



Note: All dimensions are for reference only. Do not use for pre-plumbing.

PRODUCT NUMBER	A INLET in[mm]	B OUTLET in[mm]	GAUGE	DIMENSIONS			MASTER CARTON	WEIGHT CARTON [lbs]
				C in[mm]	D in[mm]	E in[mm]		
Z8700-PC	1 1/4[32]	1 1/4[32]	17	10[254]	2 1/2[64]	7 1/2[191]	12	24
Z8700-8-PC	1 1/4[32]	1 1/4[32]	17	11[279]	2 1/2[64]	8 1/2[216]	12	24
Z8700-15-PC	1 1/4[32]	1 1/4[32]	17	15[381]	2 1/2[64]	12 1/2[318]	18	40
Z8701-PC	1 1/4[32]	1 1/2[38]	17	10 1/2[267]	3[76]	7 1/2[191]	12	24
Z8701-9-PC	1 1/4[32]	1 1/2[38]	17	12[305]	3[76]	9[229]	12	24
Z8701-15-PC	1 1/4[32]	1 1/2[38]	17	15[381]	3[76]	12[305]	18	42
Z8702-PC*	1 1/2[38]	1 1/2[38]	17	10 1/2[267]	3[76]	7 1/2[191]	12	24
Z8702-9-PC*	1 1/2[38]	1 1/2[38]	17	12[305]	3[76]	9[229]	12	24
Z8702-15-PC*	1 1/2[38]	1 1/2[38]	17	15[381]	3[76]	12[305]	18	42
Z8703B-PC**	1 1/2[38]	2[51]	17	12 1/2[318]	3 1/2[89]	9[229]	6	18
Z8704B-PC**	2[51]	2[51]	17	12 1/2[318]	3 1/2[89]	9[229]	6	18
Z8706-PC	1 1/4[32]	1 1/4[32]	20	10[254]	2 1/2[64]	7 1/2[191]	12	24
Z8707-PC	1 1/4[32]	1 1/2[38]	20	10 1/2[267]	3[76]	7 1/2[191]	12	24
Z8708-PC*	1 1/2[38]	1 1/2[38]	20	10 1/2[267]	3[76]	7 1/2[191]	12	24

OPTIONAL ACCESSORIES

Suffix	Description
___ -B	Brass Nuts
___ -BX	Box Escutcheon
___ -CE	Cast Brass Escutcheon with Setscrew
___ -D	Deep Escutcheon (Note = not available for Z8703B-PC and Z8704B-PC)
___ -J	Metal to Metal Ground Joint Connection
___ -WC	Waste Connections - Compression
___ -15	15[381] C Dim. 1 1/4[32] and 1 1/2[38] Only
___ -18	18[457] C Dim. 1 1/4[32] and 1 1/2[38] Only

* COMES WITH OPTIONAL 1-1/2" x 1-1/4" REDUCTION POLY-WASHER FOR INLET

** SHIPPED WITH BRASS NUTS UNLESS OTHERWISE SPECIFIED

ZURN INDUSTRIES, LLC ♦ COMMERCIAL BRASS OPERATION ♦ 2640 SOUTH WORK STREET ♦ FALCONER NY 14733

Phone: 1-800-997-3876 ♦ Fax: 1-919-775-3541 ♦ www.zurn.com

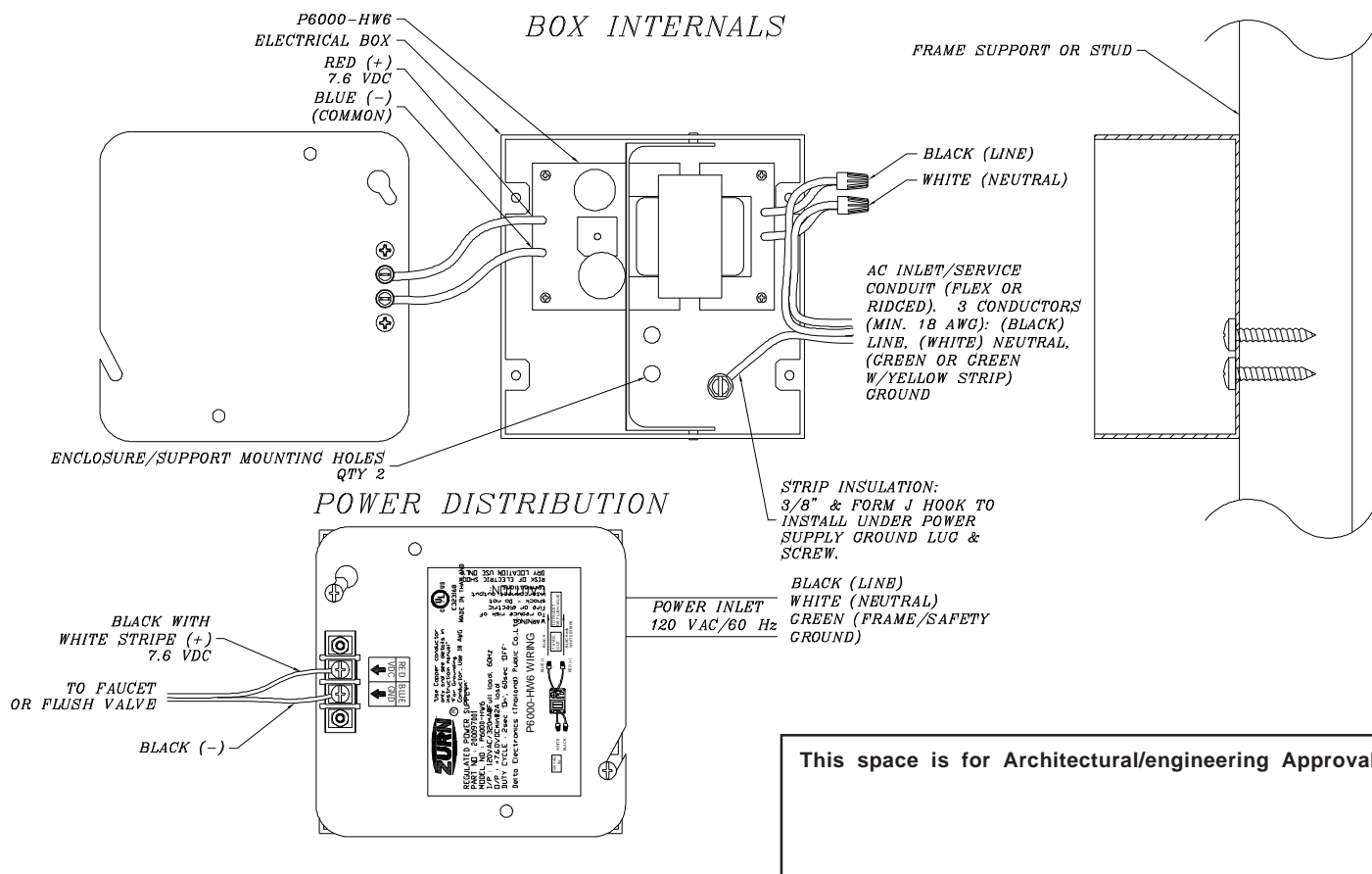
In Canada: ZURN INDUSTRIES LIMITED ♦ 3544 Nashua Drive ♦ Mississauga, Ontario L4V1L2 ♦ Phone: 905/405-8272 Fax: 905/405-1292



P6000-HW6

7.6 VDC Hardwired Power Converter for Flush Valves and Faucets

(This UL Listed model replaces former UL Recognized unit)



ENGINEERING SPECIFICATION: ZURN P6000-HW6 Power Converter - The Hardwired Power Converter is a 7.6 VDC regulated, 2.0A power supply that will operate up to: (8) ZEMS Sensors/Actuators, (8) ZESS Sensors/Solenoids, (8) 6VDC sensor faucets, or (8) Pint Urinal valves. The P6000-HW6 shown above is integrated into a 4-11/16" x 4-11/16" electrical box. The 120VAC input connections are terminated within the 4-11/16" square electrical box. The 7.6 VDC output terminals are externally mounted to the cover plate.

Notes:

1. Current P6000-HW6 product (indicated in photo) part number 200097001 replaces discontinued part number 81022001 and installation methods differ.
2. New configuration product, as shown, is shipped integrated within a 4-11/16" x 2-1/8" enclosure.
3. Mounting hardware (AC inlet conduit/cable clamp and enclosure-frame mounting screws) are NOT provided.
4. Low voltage output terminals are now external to the enclosure.

Typical Rough-In: 120 VAC is routed in conduit to the P6900-HW6 and the AC inlet connections are terminated within the assembly. The low voltage DC output connections are terminated externally and depending upon the installation area, appropriate cable/conductor insulation must be selected to meet local codes (conduit not required for the low voltage output conductor paths).

ZURN INDUSTRIES, LLC. ♦ COMMERCIAL BRASS OPERATION ♦ 5900 ELWIN BUCHANAN DRIVE ♦ SANFORD NC 27330

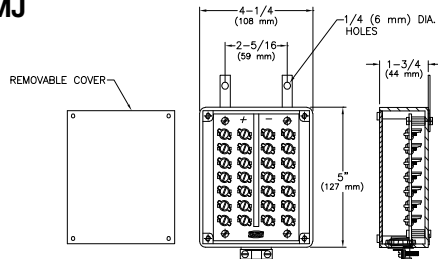
Phone: 1-800-997-3876 ♦ Fax: 919-775-3541 ♦ World Wide Web: www.zurn.com

In Canada: ZURN INDUSTRIES LIMITED ♦ 3544 Nashua Drive ♦ Mississauga, Ontario L4V1L2 ♦ Phone: 905-405-8272 Fax: 905-405-1292



Sensor Product Accessories For Sensor-Operated Faucets

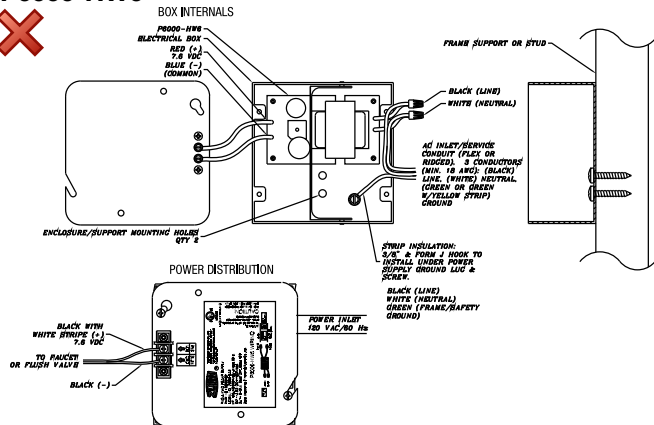
P6000-MJ



ENGINEERING SPECIFICATION: ZURN P6000-MJ –

The Mini Junction Box is a 4-1/4" x 5" x 1-3/4" [108 mm x 127 mm x 44 mm] electrical enclosure designed to connect up to 8 Zurn sensor urinals/closets. The unit includes a high impact plastic enclosure with polarity marked terminal board, high impact plastic cover panel, wall mounting tabs, integral strain relief, and illustrative wiring diagram.

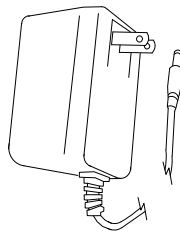
P6000-HW6



ENGINEERING SPECIFICATION: Zurn P6000-HW6

Hardwired Power Converter – Hardwired power converter to power up to 8 Zurn sensor urinal/closet flush valves or up to 8 hardwired Zurn sensor faucets. The P6000-HW6 is integrated within a 4-11/16" x 4-11/16" x 2-1/8" electrical and the low voltage connections are performed at the terminal block mounted externally on the box cover.

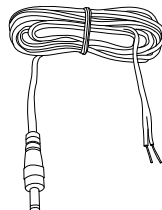
P6900-ACA



ENGINEERING SPECIFICATION: Z6900-ACA Plug-In

Power Converter – Plug-in Power Converter is designed to provide 6VDC power for one Zurn 6VDC sensor faucet. Power converter plugs into 120VAC outlet (supplied by others) located conveniently to faucets. Electrical characteristics: Input: 120VAC, 60Hz, 10w; Output: 6VDC, 800mA

P6900-CWB



ENGINEERING SPECIFICATION: Zurn P6900-CWB Connecting Wire –

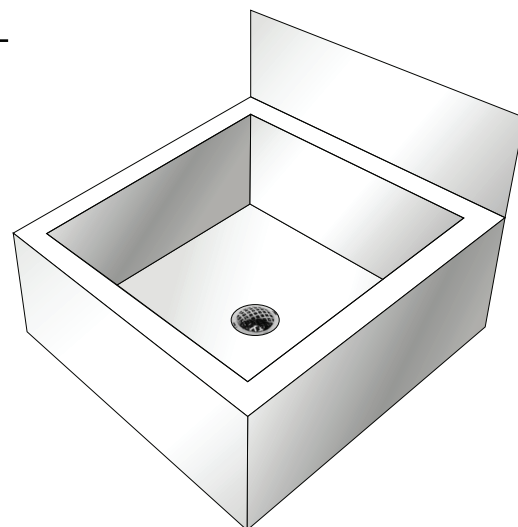
Connecting wire to convert/connect battery-operated sensor faucet to P6000-HW6 power converter. The connecting wire is 84" long with one end bare to connect to power converter and the opposite end has an RCA connector to plug into electronics module of the faucet.

DESCRIPTION

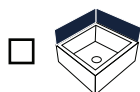
Stainless steel mop basin, type 304, 16 gauge, 610 x 610 x 254/406 mm (24 x 24 x 10 /16 in), #4 finish internal surfaces, rim and backsplash panel, against the wall installation, full skirt on 3 sides, 152 mm (6 in) high integrated backsplash, center drain, preslopped, interior square corners, 38 mm (1 1/2 in) flattened rim. DN 76 mm (3 in) stainless steel dome strainer/lint basket with locking nut, neoprene gasket for push-on connections.

Meets standards : ASME A 112.19.3 / CSA 845.4-08 (R2013)

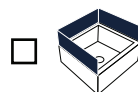
Stainless steel dome strainer/lint basket with locking nut, neoprene gasket for push-on connections for DN 3".



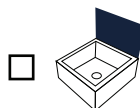
OPTIONS



Suffixe **-C** :
2 Panels and skirt for corner installation.



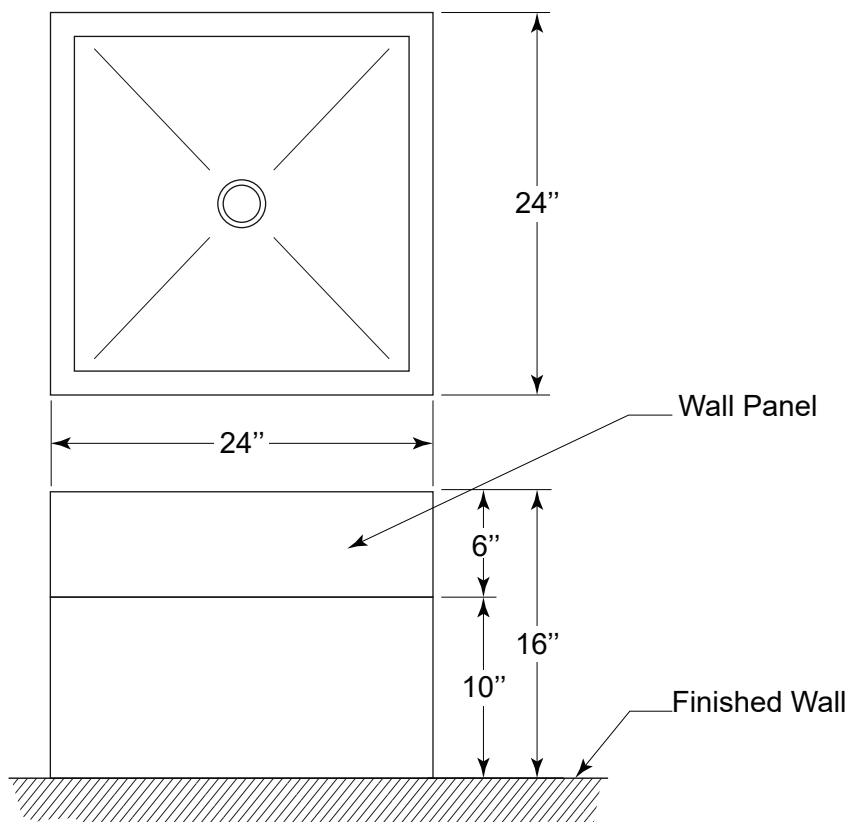
Suffixe **-PM3** :
Wall and skirt panels on all 3 sides



Suffixe **-PMEXT** :
Extended Wall panel (max. 36").



Suffixe **-316** :
Type 316 (for installation in corrosive locations)



**Z843M1-XL****Sink Faucet**

MS-1

TAG _____

Architectural/Engineering Specification:

Polished chrome-plated cast brass 8" sink faucet with quarter turn ceramic disc cartridges, 3/8" short swivel inlets providing adjustable centers from 7-1/4" to 8-3/4", integral service stops and a 6" centerline cast brass spout with chemical resistant atmospheric vacuum breaker, 3/4" hose threaded outlet, pail hook and adjustable wall brace. Unit is furnished with 2-1/2" vandal-resistant color-coded brass lever handles. Vacuum breaker is certified to the uniform plumbing code®, ASSE 1001- 2002 and CSA b64-01. (note: atmospheric vacuum breaker not intended for continuous pressure applications.)

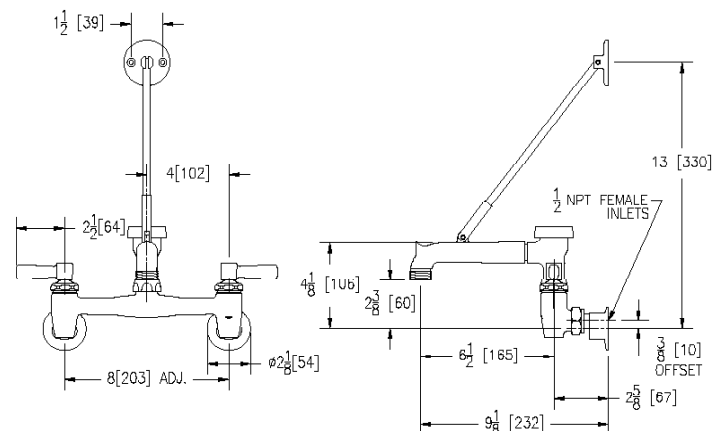
Zurn Lead Free products (-XL) is the line of durable, high quality brass faucets and fixtures that are designed and manufactured to comply with Section 1417 of the Safe Drinking Water Act (SDWA) which mandates the weighted average lead content of no more than 0.25% of the wetted surface.

Product Features:

- 6" Vacuum Breaker Spout with 3/4" Threaded Outlet, Brace and Pail Hook
- 2-1/2" Vandal Resistant Color Coded Lever Handles
- Ceramic Disc Cartridge
- Low-Lead Compliant
- Chrome-plated Cast Brass Body

Suffix Options:

- | | |
|-------------|--|
| -CS | Check Stop |
| -LSI | 2-1/2" [64mm] Long Swivel Inlets with Integral Stops |
| -WHK | Wall Hook |
| -5H | 5' [152cm] Vinyl Hose |



Rough-in/Overview dimensions

Compliance and Certification:

- Low-Lead Compliant
- ADA Compliant
- ASSE 1001- 2002
- CSA b64-01



XL LEAD FREE

ADA DESIGNED

C

US

ZURN INDUSTRIES, LLC 511 W. Freshwater Way, Milwaukee, WI U.S.A. 53204 · Ph. 1-855-ONE-ZURN, Fax 919-775-3541

In Canada: ZURN INDUSTRIES LIMITED 7900 Goreway Drive, Unit 10, Brampton, Ontario L6T 5W6, Ph. 905-405-8272, Fax 905-405-1292

Rev. A

Date: 1/08/2020

C.N. No. NEW

Prod. | Dwg. No. SS Z843M1-XL

1026682

Architectural/Engineering Approval

The information contained in this document is subject to change without notice.
Please contact Zurn for most up to date information.

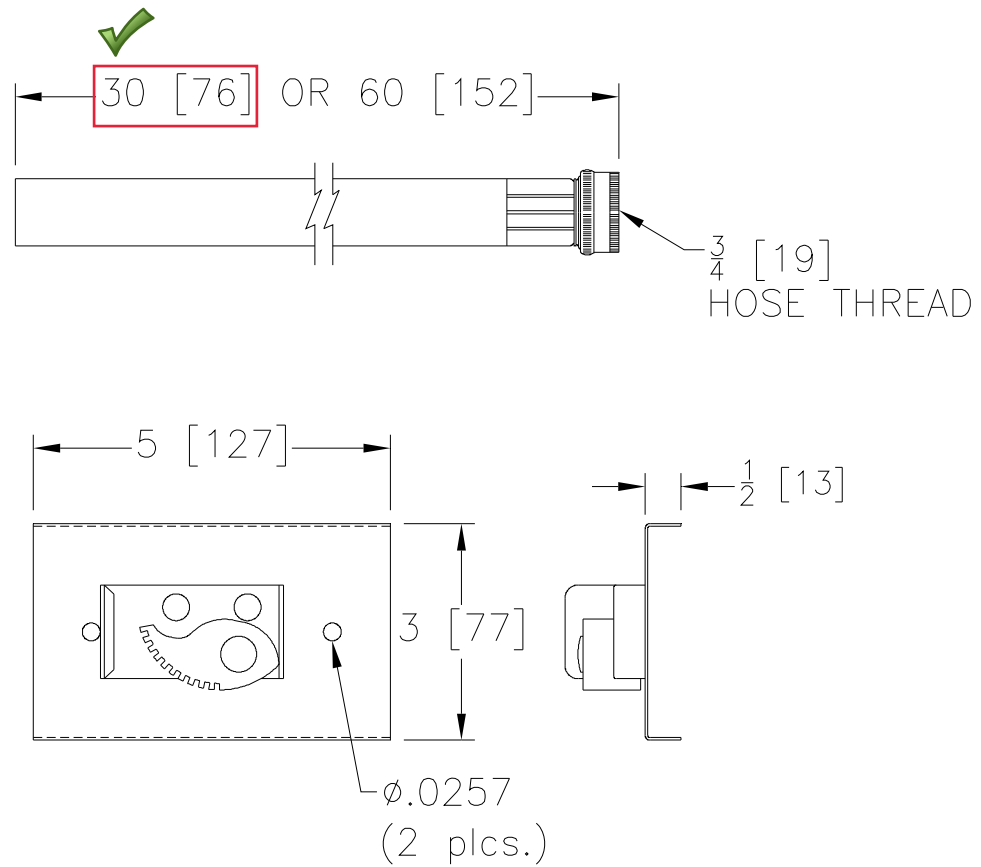
Meets the American Disabilities Guidelines and ANSI A117.1 requirements when installed according to these requirements.

In Canada - Consult local codes and standards.



US 1.855.ONE.ZURN CANADA 1.905.405.8272 ZURN.COM

Dimensional Data (inches and [mm]) are Subject to Manufacturing Tolerances and Change Without Notice



ENGINEERING SPECIFICATION: Zurn Light Commercial Z1996-HH

Mop Basin Hose and Hose Bracket. Heavy-Duty 5/8 [16], 30 [76] -long cloth-reinforced flexible rubber hose with 3/4 [19] brass coupling at one end. Bracket is 5 [127] long x 3 [76] wide, 20-gage type 304 stainless steel with rubber grip. Hose also available in 60 [152] length.



Z5655-BWL1

HET Elongated Floor Mounted
EcoVantage® Flush Valve Toilet System

TAG _____



Z5655 Series Elongated

Recommended Trim:

- ☐ **Z5955SS-EL** Elongated, standard white, open front toilet seat less cover with stainless steel check hinge.
- ☐ **Z5972-COMB** Closet bolt/wax ring kit

*Note: To ensure system performance:
Minimum Running Water Pressure = 25 psi*



This product should be used with a WaterSense labeled counterpart with a compatible flush volume to ensure that the entire system meets the requirements for water efficiency and performance.

*These dimensions and specifications are subject to change without notice.
Fixture dimensions meet ANSI/ASME standard A112.19.2 and CAN/CSA B45 requirements.*

Z5655 HET Series

- Zurn High Efficiency Toilets and paired performance flush valve systems are designed to exceed industry standards while using as little as 1.1 gallons of water per flush.
- Universal high efficiency toilet can be specified with 1.1 gpf [4.2 lpf], 1.28 gpf [4.8 lpf], 1.6 gpf [6.0 lpf] or dual flush valves.
- Vitreous china
- Elongated front rim
- 2-1/8" fully glazed trapway
- High efficiency siphon jet flush action
- Shipping Weight: 55 lbs.

Engineering Specification

☐ Z5655-BWL1

EcoVantage High Efficiency Toilet System
Vitreous China, 1.1 gpf [4.16 lpf] or greater high efficiency, floor mounted, bottom outlet toilet with siphon jet flushing action and elongated front rim with 1-1/2" top spud. This bowl is designed to perform to industry standards with as little as 1.1 gallons per flush.

*Replaces Zurn Z5655

☐ Z5656-BWL1

EcoVantage High Efficiency Toilet System
Vitreous China, 1.1 gpf [4.16 lpf] or greater high efficiency, floor mounted, bottom outlet toilet with siphon jet flushing action and elongated front rim with integral bedpan lugs, and 1-1/2" top spud. This bowl is designed to perform to industry standards with as little as 1.1 gallons per flush.

*Replaces Zurn Z5656

See Zurn One Systems for suggested packages.

Architectural/Engineering Approval

ZURN INDUSTRIES, LLC. ♦ COMMERCIAL BRASS OPERATION ♦ 5900 ELWIN BUCHANAN DRIVE ♦ SANFORD NC 27330

Phone: 1-800-997-3876 ♦ Fax: 919-775-3541 ♦ World Wide Web: www.zurn.com

In Canada: ZURN INDUSTRIES LIMITED ♦ 7900 Goreway Drive Unit 10 ♦ Brampton, Ontario L6T5W6 ♦ Phone: 905-405-8272 Fax: 905-405-1292



WC-1

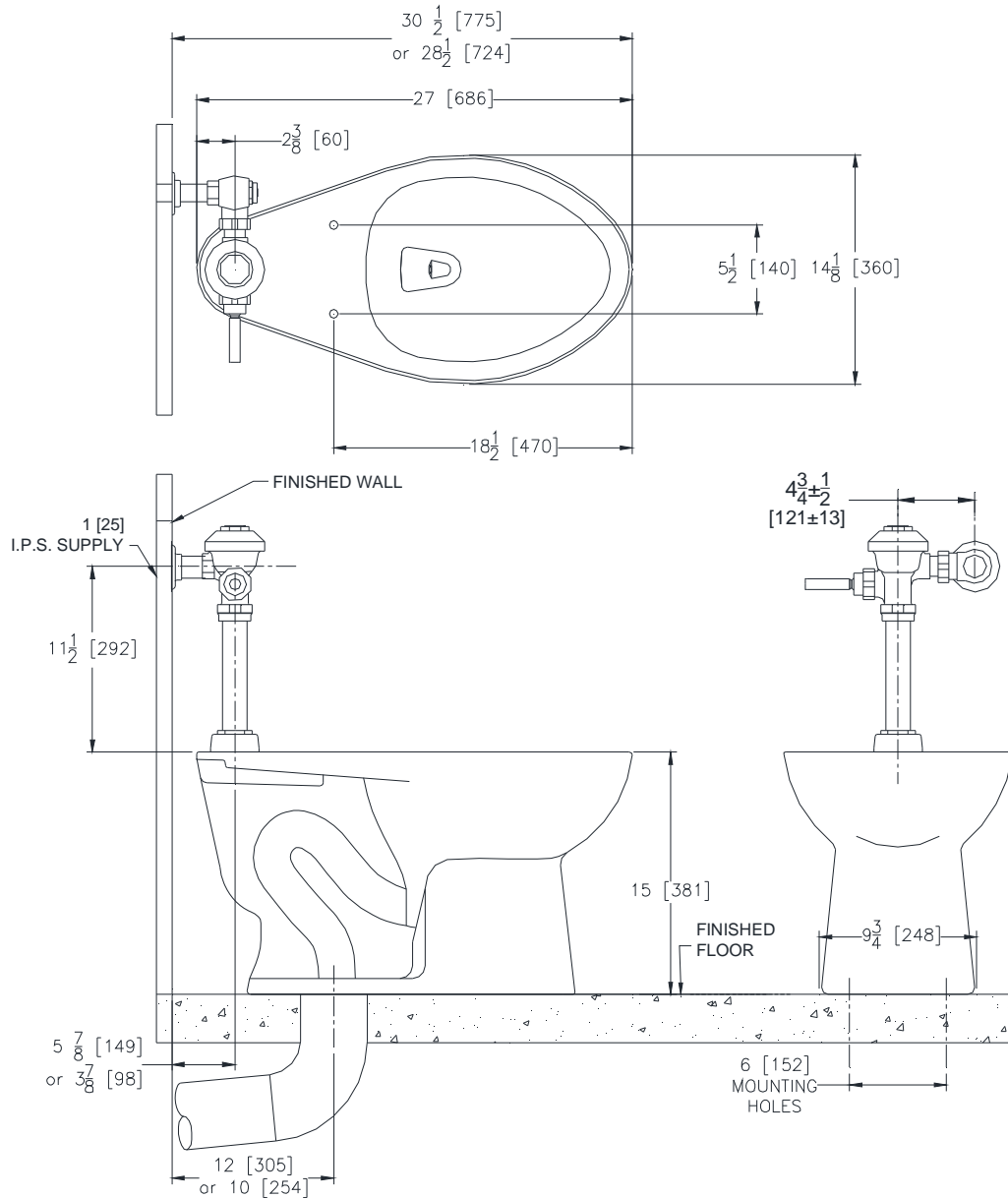
Z5655-BWL1

HET Elongated Floor Mounted
EcoVantage® Flush Valve Toilet System

TAG _____

Rough-in dimensions for Z5655 Series

- Z5655 with top spud, shown with Z6000AV-HET manual valve



These dimensions and specifications are subject to change without notice.

Fixture dimensions meet ANSI/ASME standard A112.19.2 and CAN/CSA B45 requirements.

ZURN INDUSTRIES, LLC. ♦ COMMERCIAL BRASS OPERATION ♦ 5900 ELWIN BUCHANAN DRIVE ♦ SANFORD NC 27330

Phone: 1-800-997-3876 ♦ Fax: 919-775-3541 ♦ World Wide Web: www.zurn.com

In Canada: **ZURN INDUSTRIES LIMITED ♦ 7900 Goreway Drive Unit 10 ♦ Brampton, Ontario L6T5W6 ♦ Phone: 905-405-8272 Fax: 905-405-1292**

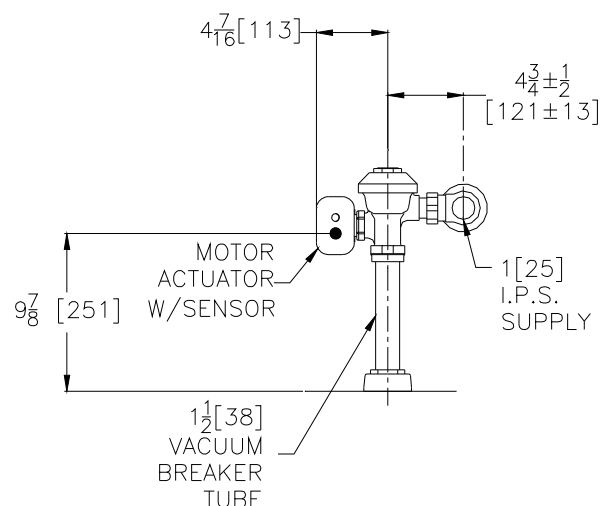
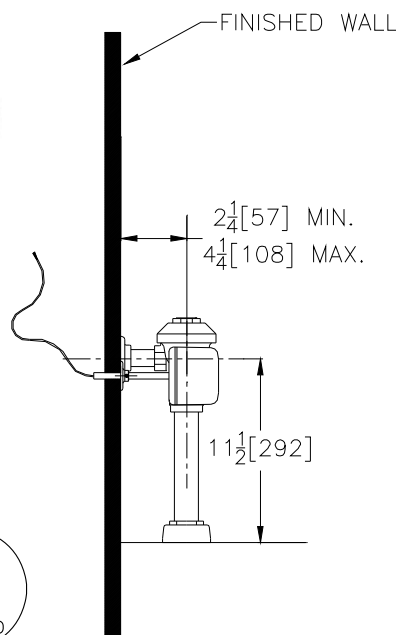


AquaSense® AV Model

TAG _____

Exposed ZEMS6000AV-HET-IS Model

1.28 GPF Hardwired Automatic Sensor Flush Valve For Water Closets



Suffix Options (Check/Specify Appropriate Options)

_____ -YJ	Split Ring Pipe Support
_____ -YK	Solid Ring Pipe Support
_____ -YO	Bumper on Angle Stop
_____	Other

Accessories (Order separate as specified)

P6000-PC6	Plug-in Power Converter (Up to 8 valves)
P6000-MJ	Mini Junction Box
P6000-HW6	Hardwire Power Converter (Up to 8 valves)

NOTE: MUST USE EITHER ZURN P6000-HW6 HARDWIRE POWER CONVERTER OR ZURN P6000-PC6 PLUG-IN POWER CONVERTER TO ENSURE PROPER OPERATION. USING A POWER CONVERTER OTHER THAN ZURN MAY RESULT IN OPERATION MALFUNCTION OR UNIT FAILURE.

This space is for Architectural/Engineering Approval

The information contained in this document is subject to change without notice.
Please contact Zurn for most up to date information.

ZURN INDUSTRIES, LLC. ♦ COMMERCIAL BRASS OPERATION ♦ 5900 ELWIN BUCHANAN DRIVE ♦ SANFORD NC 27330

Phone: 1-800-997-3876 ♦ Fax: 919-775-3541 ♦ World Wide Web: www.zurn.com

In Canada: ZURN INDUSTRIES LIMITED ♦ 3544 Nashua Drive ♦ Mississauga, Ontario L4V1L2 ♦ Phone: 905-405-8272 Fax: 905-405-1292

AquaVantage® is a registered trademark of Zurn Industries, LLC.
AquaSense® is a registered trademark of Zurn Industries, LLC.

Rev. B
Dwg. No. 200111

Date: 10/2/09
Product No. ZEMS6000AV-HET-IS



Z5950

**Commercial Heavy Duty
Toilet Seat**

WC-1

TAG _____

Select your seat and check all options that apply

Engineering Specification:

Z5955SS-EL Elongated, standard white, open front toilet seat, less cover, with stainless steel check hinge.

- AM ZurnSHIELD™ protection
- AMFR ZurnSHIELD™/Fire Retardant
- BK Black
- STS Self-sustaining stainless steel check hinge

Z5956SS-EL Elongated, extra heavy duty, premium white, open front toilet seat, less cover, with stainless steel check hinge.

- ADA 2" Lift
- AM ZurnSHIELD™ protection
- BK Black
- STS Self-sustaining stainless steel check hinge

Z5956SS-EL Elongated, extra heavy duty, premium white, open front toilet seat, less cover, with stainless steel check hinge.

- ADA 2" Lift
- AM ZurnSHIELD™ protection
- BK Black
- STS Self-sustaining stainless steel check hinge

Z5957SS White, open front toilet seat, with cover and stainless steel check hinge.

- AM ZurnSHIELD™ protection
- AMFR ZurnSHIELD™/Fire Retardant
- BK Black
- EL Elongated
- RD Round
- STS Self-sustaining stainless steel check hinge

Z5958SS White, closed front toilet seat, with cover and stainless steel check hinge.

- AMFR ZurnSHIELD™/Fire Retardant
- EL Elongated
- RD Round
- STS Self-sustaining stainless steel check hinge

Z5959SS-JUV White, ZurnSHIELD™ open front child's toilet seat, less cover, with stainless steel check hinge.

Product Features:

- Injection molded for rugged, heavy duty use.
- Highly resistant to cleansers and strong chemicals
- Stainless steel check hinge
- Integrally molded bumpers for lasting durability

*ZurnSHIELD™ protects the seat by inhibiting the growth of stain and odor causing mold mildew and bacteria, thus reducing the amount of time, chemicals and water to clean the seat.



Z5955SS-EL shown above



Z5956SS-EL shown above



Z5957SS shown above

Z5958SS --

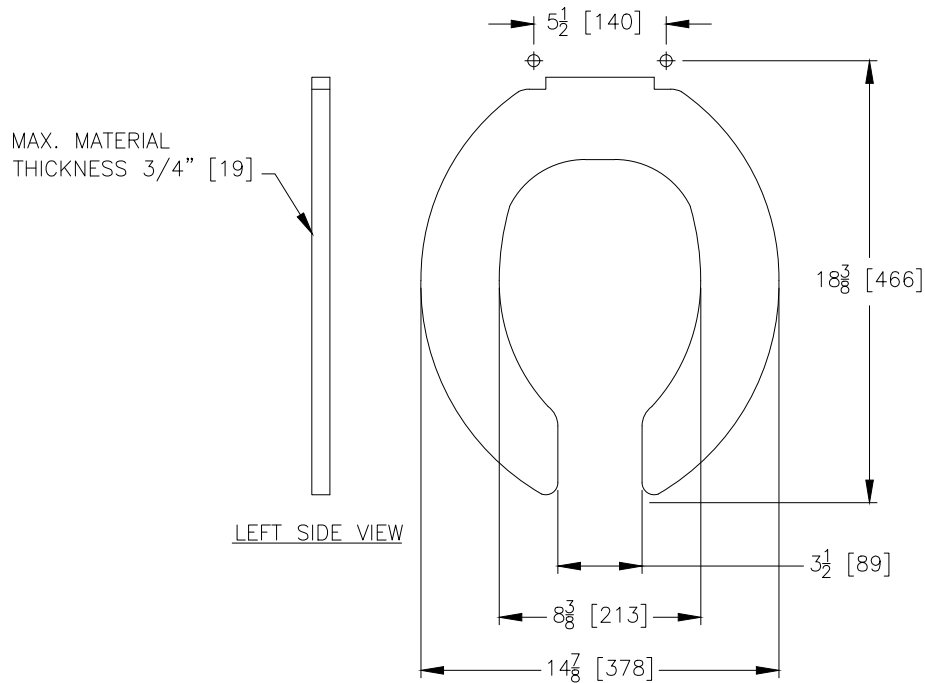


Z5959SS-JUV shown above

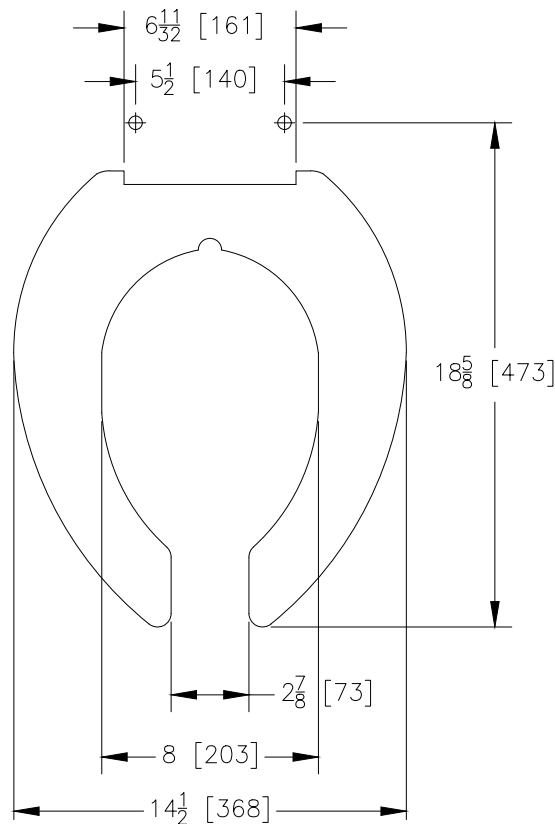
Architectural/Engineering Approval

The information contained in this document is subject to change without notice.
Please contact Zurn for most up to date information.

Rough-in dimensions/Overview dimensions



Z5955SS-EL shown above



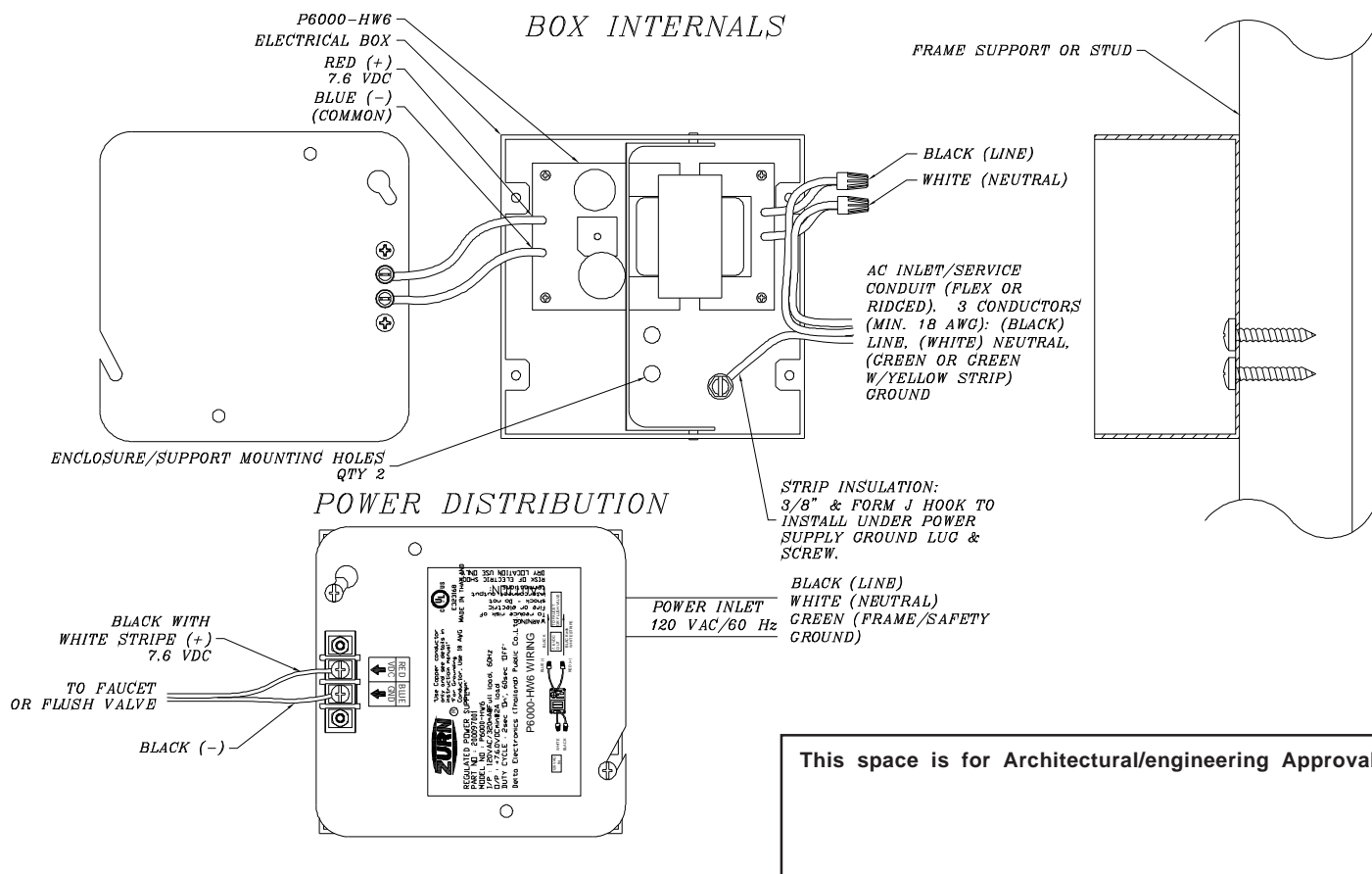
Z5956SS-EL shown above



P6000-HW6

7.6 VDC Hardwired Power Converter for Flush Valves and Faucets

(This UL Listed model replaces former UL Recognized unit)



ENGINEERING SPECIFICATION: ZURN P6000-HW6 Power Converter - The Hardwired Power Converter is a 7.6 VDC regulated, 2.0A power supply that will operate up to: (8) ZEMS Sensors/Actuators, (8) ZESS Sensors/Solenoids, (8) 6VDC sensor faucets, or (8) Pint Urinal valves. The P6000-HW6 shown above is integrated into a 4-11/16" x 4-11/16" electrical box. The 120VAC input connections are terminated within the 4-11/16" square electrical box. The 7.6 VDC output terminals are externally mounted to the cover plate.

Notes:

1. Current P6000-HW6 product (indicated in photo) part number 200097001 replaces discontinued part number 81022001 and installation methods differ.
2. New configuration product, as shown, is shipped integrated within a 4-11/16" x 2-1/8" enclosure.
3. Mounting hardware (AC inlet conduit/cable clamp and enclosure-frame mounting screws) are NOT provided.
4. Low voltage output terminals are now external to the enclosure.

Typical Rough-In: 120 VAC is routed in conduit to the P6900-HW6 and the AC inlet connections are terminated within the assembly. The low voltage DC output connections are terminated externally and depending upon the installation area, appropriate cable/conductor insulation must be selected to meet local codes (conduit not required for the low voltage output conductor paths).

ZURN INDUSTRIES, LLC. ♦ COMMERCIAL BRASS OPERATION ♦ 5900 ELWIN BUCHANAN DRIVE ♦ SANFORD NC 27330

Phone: 1-800-997-3876 ♦ Fax: 919-775-3541 ♦ World Wide Web: www.zurn.com

In Canada: ZURN INDUSTRIES LIMITED ♦ 3544 Nashua Drive ♦ Mississauga, Ontario L4V1L2 ♦ Phone: 905-405-8272 Fax: 905-405-1292



Z5665-BWL1

HET Elongated Floor Mounted, ADA Height
EcoVantage® Flush Valve Toilet System

TAG _____



Z5665 Series Elongated

Recommended Trim:

- ☐ **Z5955SS-EL** Elongated, standard white, open front toilet seat less cover with stainless steel check hinge.
- ☐ **Z5972-COMB** Closet bolt/wax ring kit

*Note: To ensure system performance:
Minimum Running Water Pressure = 25 psi*



This product should be used with a WaterSense labeled counterpart with a compatible flush volume to ensure that the entire system meets the requirements for water efficiency and performance.

*These dimensions and specifications are subject to change without notice.
Fixture dimensions meet ANSI/ASME standard A112.19.2 and CAN/CSA B45 requirements.
Meets the American Disabilities Guidelines and ANSI A117.1 requirements when installed per code.*



Z5665 HET Series

- Zurn High Efficiency Toilets and paired performance flush valve systems are designed to exceed industry standards while using as little as 1.1 gallons of water per flush.
- Universal high efficiency toilet can be specified with 1.1 gpf [4.2 lpf], 1.28 gpf [4.8 lpf], 1.6 gpf [6.0 lpf] or dual flush valves.
- 1.1 gpf offer 31% savings over 1.6 gpf system
- Vitreous china
- ADA height
- Elongated front rim
- 2 1/8" fully glazed trapway
- High efficiency siphon jet flush action
- Shipping Weight: 57 lbs.

Engineering Specification

☐ Z5665-BWL1

EcoVantage High Efficiency Toilet System

Vitreous China, 1.1 gpf [4.16 lpf] or greater high efficiency, ADA, floor mounted, bottom outlet toilet with siphon jet flushing action and elongated front rim with 1-1/2" top spud. This bowl is designed to perform to industry standards with as little as 1.1 gallons per flush.

*Replaces Zurn Z5665

☐ Z5666-BWL1

EcoVantage High Efficiency Toilet System

Vitreous China, 1.1 gpf [4.16 lpf] or greater high efficiency, ADA, floor mounted, bottom outlet toilet with siphon jet flushing action and elongated front rim with integral bedpan lugs, and 1-1/2" top spud. This bowl is designed to perform to industry standards with as little as 1.1 gallons per flush.

*Replaces Zurn Z5666

See Zurn One Systems for suggested packages.

Architectural/Engineering Approval

ZURN INDUSTRIES, LLC. ♦ COMMERCIAL BRASS OPERATION ♦ 5900 ELWIN BUCHANAN DRIVE ♦ SANFORD NC 27330

Phone: 1-800-997-3876 ♦ Fax: 919-775-3541 ♦ World Wide Web: www.zurn.com

In Canada: ZURN INDUSTRIES LIMITED ♦ 7900 Goreway Drive Unit 10 ♦ Brampton, Ontario L6T5W6 ♦ Phone: 905-405-8272 Fax: 905-405-1292



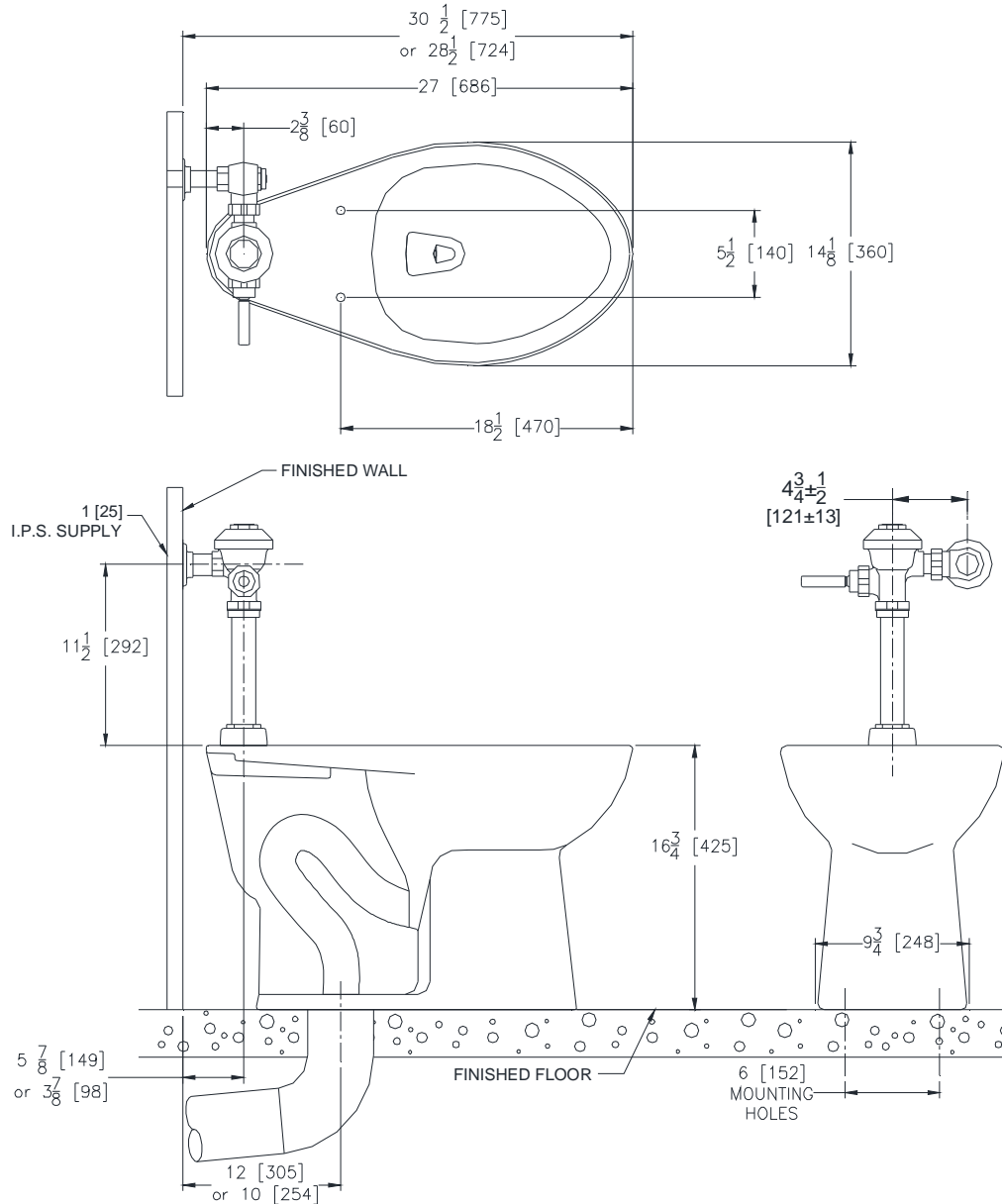
Z5665-BWL1

HET Elongated Floor Mounted, ADA Height
EcoVantage® Flush Valve Toilet System

TAG _____

Rough-in dimensions for Z5665 Series

- Z5665 with top spud, shown with Z6000AV-HET valve



These dimensions and specifications are subject to change without notice.

Fixture dimensions meet ANSI/ASME standard A112.19.2 and CAN/CSA B45 requirements.

Meets the American Disabilities Guidelines and ANSI A117.1 requirements when installed per code.



ZURN INDUSTRIES, LLC. ♦ COMMERCIAL BRASS OPERATION ♦ 5900 ELWIN BUCHANAN DRIVE ♦ SANFORD NC 27330

Phone: 1-800-997-3876 ♦ Fax: 919-775-3541 ♦ World Wide Web: www.zurn.com

In Canada: ZURN INDUSTRIES LIMITED ♦ 7900 Goreway Drive Unit 10 ♦ Brampton, Ontario L6T5W6 ♦ Phone: 905-405-8272 Fax: 905-405-1292



ZEMS6000AV

Exposed Flush Valve for Water Closets

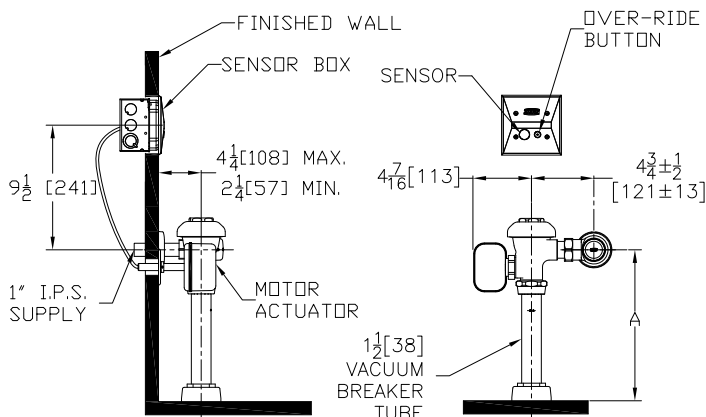
TAG _____

Architectural/Engineering Specification:

Exposed, quiet diaphragm-type, chrome plated flushometer valve with a polished exterior. Complete with Zurn's AquaVantage® TPE, chloramine resistant, dual seal diaphragm with a clog resistant, triple filtered by-pass. The valve incorporates a 6VDC motor actuator, an automatic sensor with capacitive sensing push button override, high impact resistant polycarbonate housing and chrome plated plastic cover with manual override push button and 10 degree angled sensor.

Product Features:

- Proprietary Dezincification resistant low lead brass alloy
- Control Stop has internal siphon-guard protection and vandal resistant stop cap, Sweat solder kit, wall flange with set screw.
- High back pressure Vacuum Breaker with one piece hex coupling nut
- Chloramine resistant Internal seals
- Adjustable tailpiece
- Spud coupling and flange for top spud connection



Rough-in/Overview dimensions

Accessories (Order separate as specified)

- P6900-ACA-BA 7.6VDC Plug-In ACA Power Supply
Powers up to 4 valves
- P6000-HW6 7.6VDC Hardwired Power Converter
Powers up to 8 valves
- P6000-MJ Mini Junction Box

Compliance and Certification:

- ADA Compliant
- WaterSense Compliant



ZURN INDUSTRIES, LLC 511 W. Freshwater Way, Milwaukee, WI U.S.A. 53204 · Ph. 1-855-ONE-ZURN, Fax 919-775-3541

In Canada: ZURN INDUSTRIES LIMITED 7900 Goreway Drive, Unit 10, Brampton, Ontario L6T 5W6, Ph. 905-405-8272, Fax 905-405-1292

Rev. A

Date: 07/23/19

C.N. No. NEW

Prod. | Dwg. No. SS ZEMS6000AV

1026682



Flow Options:

	Flush Volume	WaterSense Compliant
✓ -ONE*	1.1 gpf	✓
✓ -HET*	1.28 gpf	✓
-WS1	1.6 gpf	
-Standard	3.5 gpf	

Suffix Options:

- ✓ **-FM12** Floor Mount 12" Rough In
- ✓ **-MOB** Manual Over-ride Button (Front of Body)
- YJ** Split Ring Pipe Support
- YK** Solid Ring Pipe Support
- YO** Bumper on Angle Stop

Valve Height Options:

	Product No.	A
	ZEMS6000AV	11 1/2" [292]
✓	ZEMS6000AV-1	16" [406]
	ZEMS6000AV-2	24" [610]

* Not available with triple filter by-pass

Architectural/Engineering Approval

The information contained in this document is subject to change without notice.
Please contact Zurn for most up to date information.

This product should be used with a WaterSense labeled counterpart with a compatible flow volume to ensure that the entire system meets the requirements for water efficiency and performance.



US 1.855.ONE.ZURN CANADA 1.905.405.8272 ZURN.COM



Z5950

**Commercial Heavy Duty
Toilet Seat**

WC-2

TAG _____

Select your seat and check all options that apply

Engineering Specification:

Z5955SS-EL Elongated, standard white, open front toilet seat, less cover, with stainless steel check hinge.

- AM ZurnSHIELD™ protection
- AMFR ZurnSHIELD™/Fire Retardant
- BK Black
- STS Self-sustaining stainless steel check hinge

Z5956SS-EL Elongated, extra heavy duty, premium white, open front toilet seat, less cover, with stainless steel check hinge.

- ADA 2" Lift
- AM ZurnSHIELD™ protection
- BK Black
- STS Self-sustaining stainless steel check hinge

Z5956SS-EL Elongated, extra heavy duty, premium white, open front toilet seat, less cover, with stainless steel check hinge.

- ADA 2" Lift
- AM ZurnSHIELD™ protection
- BK Black
- STS Self-sustaining stainless steel check hinge

Z5957SS White, open front toilet seat, with cover and stainless steel check hinge.

- AM ZurnSHIELD™ protection
- AMFR ZurnSHIELD™/Fire Retardant
- BK Black
- EL Elongated
- RD Round
- STS Self-sustaining stainless steel check hinge

Z5958SS White, closed front toilet seat, with cover and stainless steel check hinge.

- AMFR ZurnSHIELD™/Fire Retardant
- EL Elongated
- RD Round
- STS Self-sustaining stainless steel check hinge

Z5959SS-JUV White, ZurnSHIELD™ open front child's toilet seat, less cover, with stainless steel check hinge.

Product Features:

- Injection molded for rugged, heavy duty use.
- Highly resistant to cleansers and strong chemicals
- Stainless steel check hinge
- Integrally molded bumpers for lasting durability

*ZurnSHIELD™ protects the seat by inhibiting the growth of stain and odor causing mold mildew and bacteria, thus reducing the amount of time, chemicals and water to clean the seat.



Z5955SS-EL shown above



Z5956SS-EL shown above



Z5957SS shown above

Z5958SS --

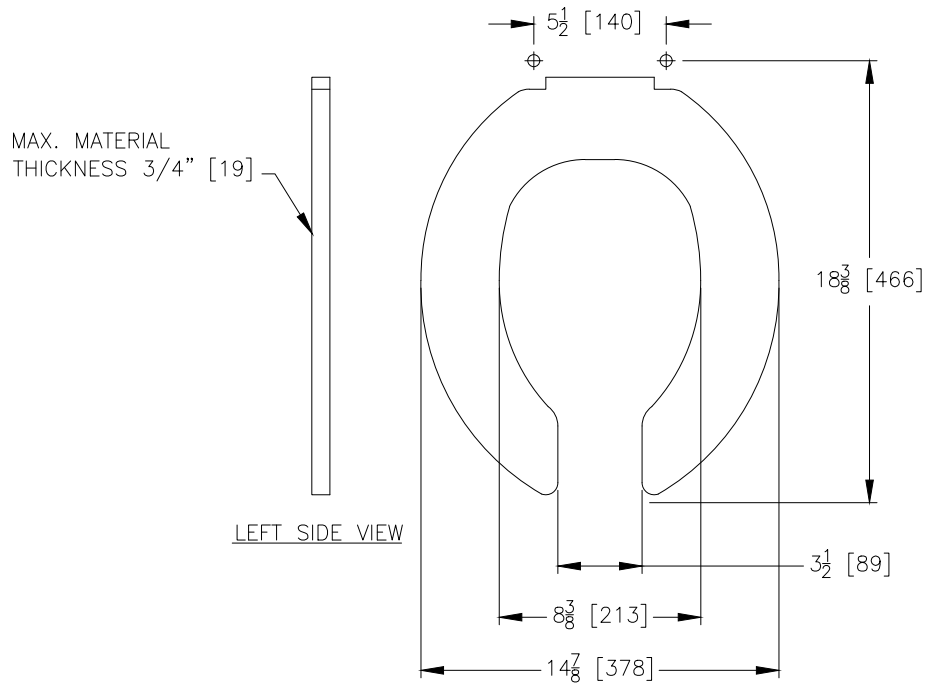


Z5959SS-JUV shown above

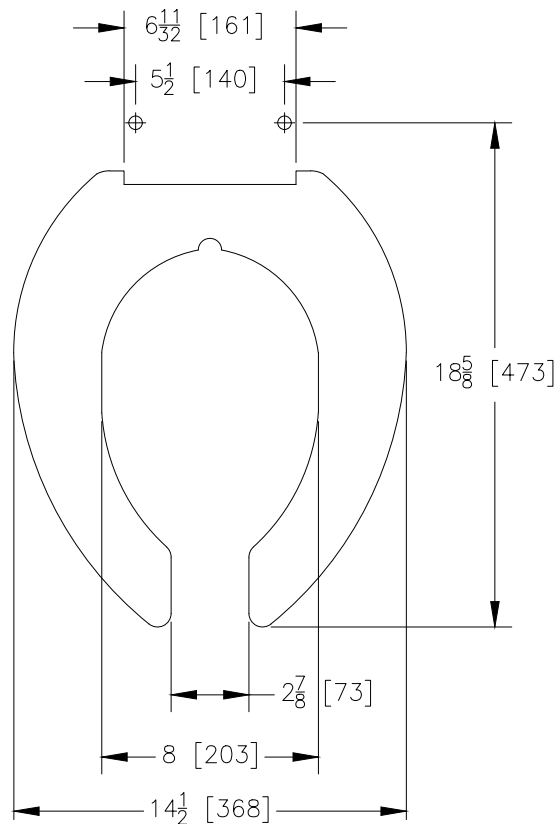
Architectural/Engineering Approval

The information contained in this document is subject to change without notice.
Please contact Zurn for most up to date information.

Rough-in dimensions/Overview dimensions



Z5955SS-EL shown above



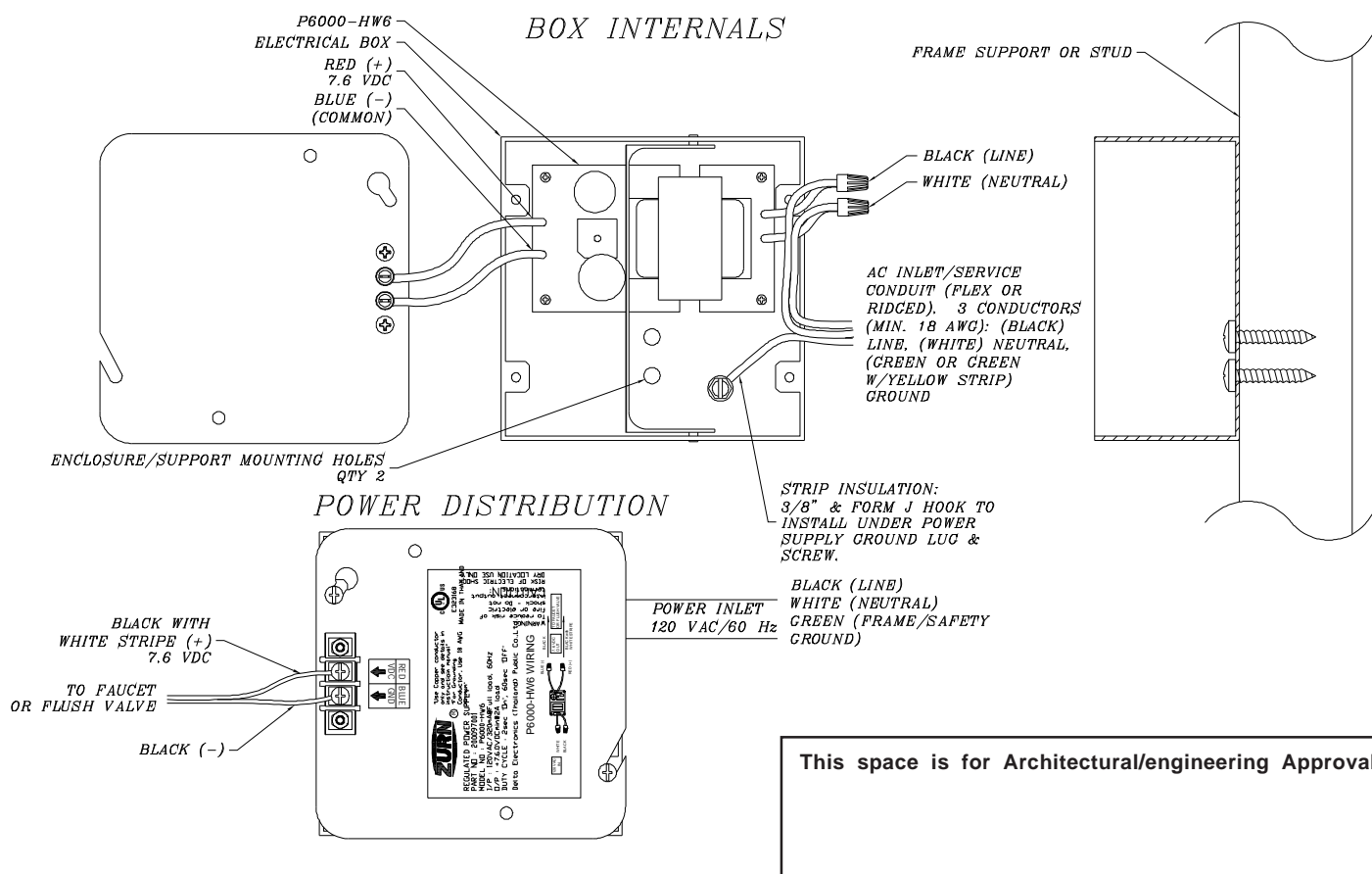
Z5956SS-EL shown above



P6000-HW6

7.6 VDC Hardwired Power Converter for Flush Valves and Faucets

(This UL Listed model replaces former UL Recognized unit)



ENGINEERING SPECIFICATION: ZURN P6000-HW6 Power Converter - The Hardwired Power Converter is a 7.6 VDC regulated, 2.0A power supply that will operate up to: (8) ZEMS Sensors/Actuators, (8) ZESS Sensors/Solenoids, (8) 6VDC sensor faucets, or (8) Pint Urinal valves. The P6000-HW6 shown above is integrated into a 4-11/16" x 4-11/16" electrical box. The 120VAC input connections are terminated within the 4-11/16" square electrical box. The 7.6 VDC output terminals are externally mounted to the cover plate.

Notes:

1. Current P6000-HW6 product (indicated in photo) part number 200097001 replaces discontinued part number 81022001 and installation methods differ.
2. New configuration product, as shown, is shipped integrated within a 4-11/16" x 2-1/8" enclosure.
3. Mounting hardware (AC inlet conduit/cable clamp and enclosure-frame mounting screws) are NOT provided.
4. Low voltage output terminals are now external to the enclosure.

Typical Rough-In: 120 VAC is routed in conduit to the P6900-HW6 and the AC inlet connections are terminated within the assembly. The low voltage DC output connections are terminated externally and depending upon the installation area, appropriate cable/conductor insulation must be selected to meet local codes (conduit not required for the low voltage output conductor paths).

ZURN INDUSTRIES, LLC. ♦ COMMERCIAL BRASS OPERATION ♦ 5900 ELWIN BUCHANAN DRIVE ♦ SANFORD NC 27330

Phone: 1-800-997-3876 ♦ Fax: 919-775-3541 ♦ World Wide Web: www.zurn.com

In Canada: ZURN INDUSTRIES LIMITED ♦ 3544 Nashua Drive ♦ Mississauga, Ontario L4V1L2 ♦ Phone: 905-405-8272 Fax: 905-405-1292



Z5755-U

TAG _____

Omni-Flo™ Top Spud Urinal 0.125 gpf to 1.0 gpf



Z5755 Series

Recommended Trim:

- ☐ **ZTR6203-ULF-LL**
Sensor Long Life Battery Operated Urinal
Flush Valve. 0.125 gpf [0.5 Lpf]
- ☐ **ZTR6203-EWS-LL**
Sensor Long Life Battery Operated Urinal
Flush Valve. 0.5 gpf [1.9 Lpf]
- ☐ **ZTR6203-WS1-LL**
Sensor Long Life Battery Operated Urinal
Flush Valve. 1.0 gpf [3.8 Lpf]

These dimensions and specifications are subject to change without notice.

Fixture dimensions meet ANSI/ASME standard A112.19.2 and CAN/CSA B45 requirements.

Meets the American Disabilities Guidelines and ANSI A117.1 requirements when urinal is installed 432mm (17") from finished floor.



ZURN INDUSTRIES, LLC. ♦ COMMERCIAL BRASS OPERATION
5900 ELWIN BUCHANAN DRIVE ♦ SANFORD NC 27330
Phone: 1-800-997-3876 ♦ Fax: 919-775-3541
www.zurn.com
In Canada: ZURN INDUSTRIES LIMITED
3544 Nashua Drive ♦ Mississauga, Ontario L4V1L2
Phone: 905-405-8272 Fax: 905-405-1292

EcoVantage® is a registered trademark of Zurn Industries, LLC.

Z5755 Urinal Series

- Zurn Ultra Low Consumption Urinal designed for optimal performance when paired with Zurn flush valve to save water while exceeding industry performance standards
- Based on flush valve it can flush 0.125 gpf [0.5 Lpf] to 1.0 gpf [3.8 Lpf]
- Vitreous china
- Asymmetric backwall resulting in reduced splash back
- Patent Pending
- High efficiency washdown flushing action
- Oversized footprint to make retrofit easy
- 3/4" top spud
- 2" I.P.S. outlet flange and rubber gasket with integral trap
- 14" extended rim for handicap compliance when installed at proper height
- Vandal resistant outlet strainer included

Engineering Specification:

✓ Z5755 EcoVantage® Urinal

0.125 gpf [0.5 Lpf] to 1.0 gpf [3.8 Lpf] vitreous china, wall hung, integral trap, washdown urinal complete with 3/4" top spud connection, concealed universal retrofit wall bracket, 2" outlet connection and vandal resistant outlet strainer.

Architectural/Engineering Approval

See Zurn One Systems for suggested packages.

The information contained in this document is subject to change without notice.
Please contact Zurn for most up to date information.

Rev. B
Dwg. No. 312163

Date: 7/18/2014
Product No. Z5755-U

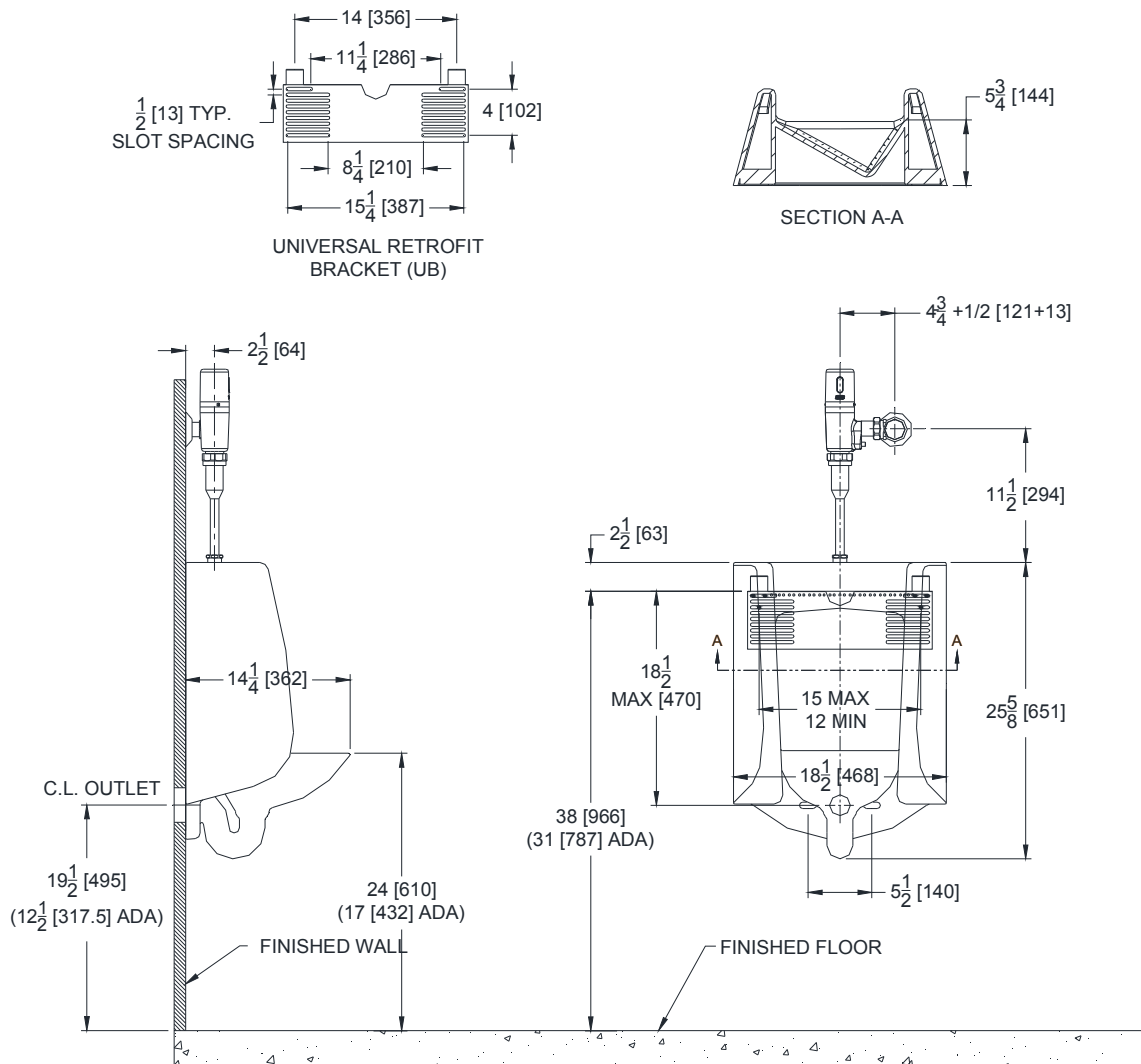


Z5755-U

TAG _____

Omni-Flo™ Top Spud Urinal 0.125 gpf to 1.0 gpf

Rough-in dimensions for Z5755-U Series



These dimensions and specifications are subject to change without notice.

Fixture dimensions meet ANSI/ASME standard A112.19.2 and CAN/CSA B45 requirements.

Meets the American Disabilities Guidelines and ANSI A117.1 requirements when urinal is installed 432mm (17") from finished floor.



ZURN INDUSTRIES, LLC. ♦ COMMERCIAL BRASS OPERATION
5900 ELWIN BUCHANAN DRIVE ♦ SANFORD NC 27330
Phone: 1-800-997-3876 ♦ Fax: 919-775-3541
www.zurn.com
In Canada: ZURN INDUSTRIES LIMITED
3544 Nashua Drive ♦ Mississauga, Ontario L4V1L2
Phone: 905-405-8272 Fax: 905-405-1292

EcoVantage® is a registered trademark of Zurn Industries, LLC.

Rev. B
Dwg. No. 312163

Date: 7/18/2014
Product No. Z5755-U

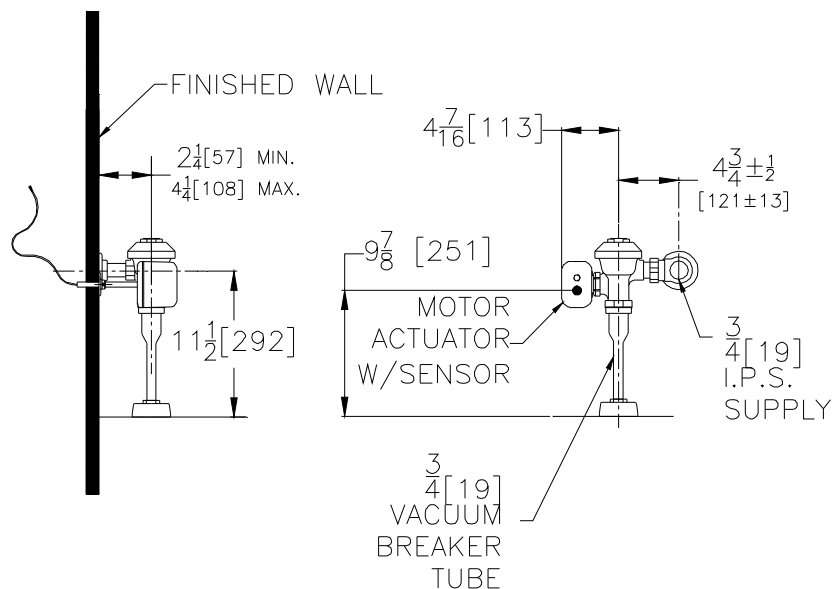
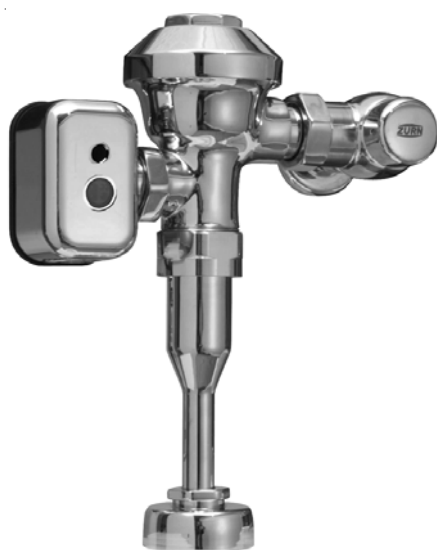


AquaSense® AV Model

TAG _____

ZEMS6003AV-ULF-IS

0.125 GPF Sensor Operated Hardwired High Efficiency Flush Valve
for Ultra Low Flow 3/4" Urinals



Suffix Options (Check/Specify Appropriate Options)

- ☐ -VP Vandal Resistant Stop Screw
- ☐ -YJ Split Ring Pipe Support
- ☐ -YK Solid Ring Pipe Support
- ☐ -_____ Other

Accessories (Order separate as specified)

- P6000-MJ** Mini Junction Box
- P6000-HW6** Hardwire Power Converter
(8 valves maximum)
- P6900-ACA-BA** Regulated AC Supply
(6 valves maximum)

Architectural/Engineering Approval

The information contained in this document is subject to change without notice.

NOTE: MUST USE EITHER ZURN P6000-HW6 HARDWIRE POWER CONVERTER OR P6900-ACA-BA REGULATED PLUG-IN POWER CONVERTER TO ENSURE PROPER OPERATION. USING A POWER CONVERTER OTHER THAN ZURN MAY RESULT IN OPERATION MALFUNCTION OR UNIT FAILURE.

ENGINEERING SPECIFICATION: ZURN ZEMS6003AV-ULF-IS AquaSense® 'AV' Exposed Hardwired Automatic Sensor Flush Valve For 3/4" Urinals- Exposed, quiet diaphragm-type, chrome plated, .125 GPF flushometer valve with a polished exterior. Complete with Zurn's AquaVantage® TPE, chloramine resistant, dual seal diaphragm with a clog resistant, filtered by-pass. The valve incorporates a motorized actuator, an integral infrared convergence-type proximity sensor and a manual push-button override into an all-metal, polished chrome plated housing. The valve is complete with high back pressure vacuum breaker, one piece hex coupling nut, adjustable tailpiece, spud coupling and flange for top spud connection. Control stop has internal siphon-guard protection, vandal resistant stop cap, sweat solder kit, and a cast wall flange with set screw. Internal seals are made of chloramine resistant materials.



* This product should be used with a WaterSense labeled counterpart with a compatible flush volume to ensure that the entire system meets the requirements for water efficiency and performance.

ZURN INDUSTRIES, LLC. ♦ COMMERCIAL BRASS OPERATION ♦ 5900 ELWIN BUCHANAN DRIVE ♦ SANFORD NC 27330

Phone: 1-800-997-3876 ♦ Fax: 919-775-3541 ♦ World Wide Web: www.zurn.com

In Canada: ZURN INDUSTRIES LIMITED ♦ 7900 Goreway Drive Unit 10 ♦ Brampton, Ontario L6T5W6 ♦ Phone: 905-405-8272 Fax: 905-405-1292

AquaVantage® is a registered trademark of Zurn Industries, LLC.
AquaSense® is a registered trademark of Zurn Industries, LLC.

Rev. D
Dwg. No. 200301

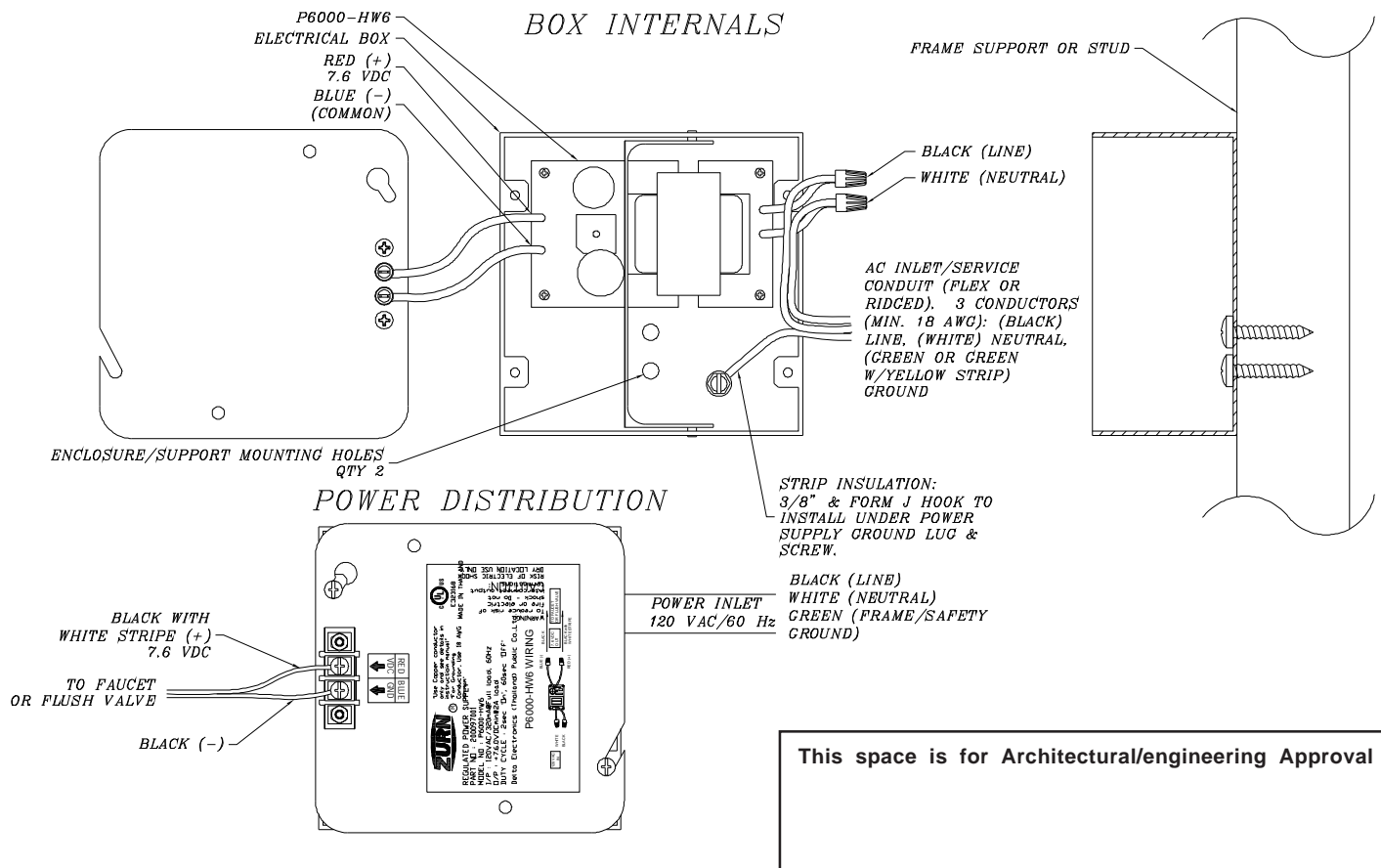
Date: 4/28/2017
Product No. ZEMS6003AV-ULF-IS



P6000-HW6

7.6 VDC Hardwired Power Converter for Flush Valves and Faucets

(This UL Listed model replaces former UL Recognized unit)



ENGINEERING SPECIFICATION: ZURN P6000-HW6 Power Converter - The Hardwired Power Converter is a 7.6 VDC regulated, 2.0A power supply that will operate up to: (8) ZEMS Sensors/Actuators, (8) ZESS Sensors/Solenoids, (8) 6VDC sensor faucets, or (8) Pint Urinal valves. The P6000-HW6 shown above is integrated into a 4-11/16" x 4-11/16" electrical box. The 120VAC input connections are terminated within the 4-11/16" square electrical box. The 7.6 VDC output terminals are externally mounted to the cover plate.

Notes:

1. Current P6000-HW6 product (indicated in photo) part number 200097001 replaces discontinued part number 81022001 and installation methods differ.
2. New configuration product, as shown, is shipped integrated within a 4-11/16" x 2-1/8" enclosure.
3. Mounting hardware (AC inlet conduit/cable clamp and enclosure-frame mounting screws) are NOT provided.
4. Low voltage output terminals are now external to the enclosure.

Typical Rough-In: 120 VAC is routed in conduit to the P6900-HW6 and the AC inlet connections are terminated within the assembly. The low voltage DC output connections are terminated externally and depending upon the installation area, appropriate cable/conductor insulation must be selected to meet local codes (conduit not required for the low voltage output conductor paths).

ZURN INDUSTRIES, LLC. ♦ COMMERCIAL BRASS OPERATION ♦ 5900 ELWIN BUCHANAN DRIVE ♦ SANFORD NC 27330

Phone: 1-800-997-3876 ♦ Fax: 919-775-3541 ♦ World Wide Web: www.zurn.com

In Canada: ZURN INDUSTRIES LIMITED ♦ 3544 Nashua Drive ♦ Mississauga, Ontario L4V1L2 ♦ Phone: 905-405-8272 Fax: 905-405-1292



THERM-X-TROL®

Thermal Expansion Tanks: ST Series Non-ASME

150 PSIG Working Pressure

Construction

Shell	Steel
Diaphragm	Heavy Duty Butyl NSF/ANSI 61
Liner	Antimicrobial Polypropylene
System Connection	Stainless Steel
Finish	Urethane Topcoat
Water Circulator	Turbulator®
Air Valve	Projection Welded with InSight® Indicator Cap (In-Line Models Only)
Factory Precharge	In-line Models 50 PSIG (3.5 bar) Stand Models 40 PSIG (2.8 bar)

Application

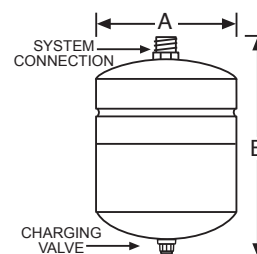
- For use in closed, potable hot water systems to control pressure buildup.
- Accepts expanded water as temperature rises to prevent relief valve discharge and system damage.
- Stand models designed for large residential and light commercial applications.
- Multiple units can be installed to accommodate larger systems.
- In-line models feature patent-pending InSight® Indicator Cap that changes color to indicate tank service.

Performance

Maximum Operating Temperature	200°F (93°C)
Maximum Working Pressure	150 PSIG (10.3 bar)
Warranty	ST-5 through ST-12: 7-Year Limited ST-25V through ST-210V: 1-Year Limited

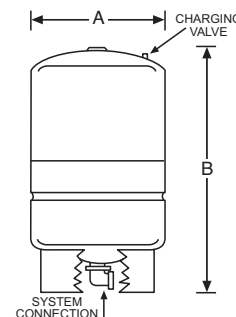
In-Line Models

Model Number	Tank Volume		Max. Acceptance Factor	A Tank Diameter		B Tank Height		System Connection (NPTM)	Shipping Weight	
	Gal	Lit		In	mm	In	mm	In	Lbs	Kg
ST-5	2.0	8	.45	8	203	13	330	¾	5	2.3
ST-12	4.4	17	.73	11	279	15	381	¾	9	4.1



Stand Models

Model Number	Tank Volume		Max. Acceptance Factor	A Tank Diameter		B Tank Height		System Connection (NPTF)	Shipping Weight	
	Gal	Lit		In	mm	In	mm	In	Lbs	Kg
ST-25V	10.3	39	1.00	15	381	19	483	¾	23	10
ST-30V	14.0	53	0.81	15	381	24	610	¾	25	11
ST-42V	20.0	76	0.57	15	381	32	813	¾	33	15
ST-60V	34.0	129	1.00	22	559	30	762	1¼	61	28
ST-80V	44.0	167	0.77	22	559	36	914	1¼	69	31
ST-180V	62.0	235	0.55	22	559	47	1194	1¼	92	42
ST-200V	81.0	307	0.44	22	559	56	1422	1¼	103	47
ST-210V	86.0	326	0.54	26	660	47	1194	1¼	123	56



All dimensions and weights are approximate.

Job Name _____	Notes _____
Engineer _____	_____
Contractor _____	_____
P.O. No. _____	_____
Sales Rep. _____	_____
Model No. _____	_____



Certified to NSF/ANSI/CAN 61



C MODELS ST-5 THROUGH ST-25V





THERM-X-TROL®

Thermal Expansion Tanks: Diaphragm ST-C Series ASME

150 PSIG Working Pressure

Construction

Shell	ST-5C, ST-12C, ST-20VC: Deep Drawn Steel ST-30VC through ST-210VC: Steel Head & Shell
Diaphragm	Heavy Duty Buty NSF/ANSI 61
Liner	Antimicrobial Polypropylene w/Anti-Legionella Protection
System Connection	Stainless Steel
Finish	Red Oxide Primer
Water Circulator	Turbulator™ (Deep Drawn Models)
Air Valve	Schrader Valve w/ EPDM Seat
Factory Precharge	55 PSIG (3.8 bar)

Performance

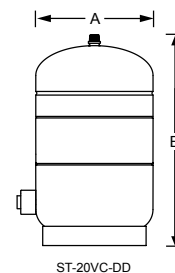
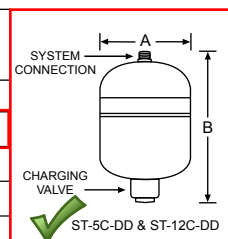
Maximum Operating Temperature	200°F (93°C)
Maximum Working Pressure	150 PSIG (10.3 bar)
Warranty	1-Year

Application

- For use in closed, domestic hot water systems to control pressure buildup.
- Fixed diaphragm construction.
- Designed and constructed per ASME Code Section VIII, Division 1.
- Tested to JIS Z 2801 for reduction of Legionella, Staphylococcus and E. coli.
- Follows ASHRAE 188 Anti-Legionella guidelines.
- All models available with optional sight glass.
- Seismic restraints available on stand models only.
- Deep drawn models are lighter, stronger and more compact than traditional head and shell construction.

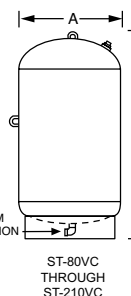
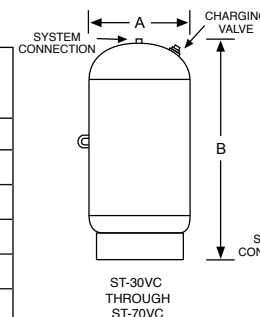
Deep Drawn In-Line & Stand Models

Model Number	Tank Volume		Max. Accept. Factor	A Tank Diameter		B Tank Height		System Conn. (NPTM)	Shipping Weight	
	Gal	Lit		In	mm	In	mm		Lbs	Kg
ST-5C-DD	2.0	8	.45	8	203	14	356	3/4	10	5
ST-12C-DD	6.4	24	.50	12	305	18	457	3/4	26	12
ST-20VC-DD	8.6	33	.37	12	305	22	559	3/4	36	16
ST-30VC-DD	16.5	63	.68	15	381	25	636	3/4	48	22
ST-42VC-DD	23.0	88	.49	15	381	33	838	3/4	68	31



Head & Shell Stand Models

Model Number	Tank Volume		Max. Accept. Factor	A Tank Diameter		B Tank Height		System Conn. (NPTF)	Shipping Weight	
	Gal	Lit		In	mm	In	mm		Lbs	Kg
ST-60VC	25.0	95	.44	16	406	32	813	3/4	85	39
ST-70VC	34.0	129	.32	16	406	45	1143	3/4	99	45
ST-80VC	53.0	201	.66	24	610	37	940	1 1/4	224	102
ST-120VC	68.0	257	.51	24	610	44	1118	1 1/4	266	121
ST-180VC	77.0	291	.45	24	610	49	1245	1 1/4	285	129
ST-210VC	90.0	341	.39	24	610	57	1448	1 1/4	319	145



All dimensions and weights are approximate.

188

AntiLegionella.

Job Name _____	Notes _____
Engineer _____	_____
Contractor _____	_____
P.O. No. _____	_____
Sales Rep. _____	_____
Model No. _____	_____





EXTROL®

Hydronic Expansion Tanks: Horizontal AX Series ASME

125 PSIG Working Pressure

Construction

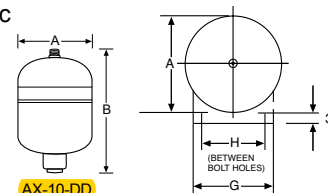
Shell	ASME Approved Steel
Diaphragm	Heavy Duty Butyl/EPDM
System Connection	NPTF ¹ Malleable Iron Center NPTM ² Steel Pipe, Top Offset
Finish	Red Oxide Primer
Air Valve	Schrader Valve w/EPDM Seats
Factory Precharge	12 PSIG (.8 bar)

Performance

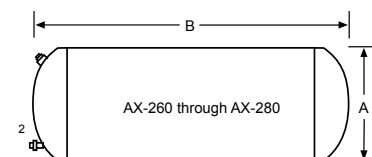
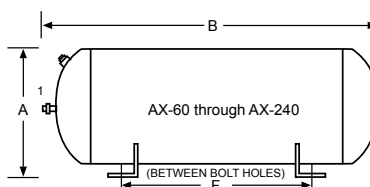
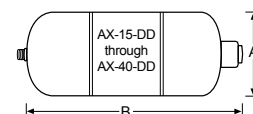
Maximum Operating Temperature	240°F (115°C)
Maximum Working Pressure	125 PSIG (8.6 bar)
Warranty	1-Year

Application

- For use in closed, non-potable hydronic heating and chilled water systems.
- Designed to meet all ASME Code Section VIII, Division 1 standards.
- Available with optional sight glass and seismic restraints (saddles).
- Suitable in propylene glycol applications with mixtures up to 50%.
- Deep drawn models are lighter, stronger and more compact than traditional head and shell construction.



AX-10-DD



Deep Drawn Horizontal ASME Models

Model Number	Tank Volume		Max. Accept. Volume		A Tank Diameter		B Tank Length		Sys. Conn	Restrains (Saddles) for Horizontal Mounting						Ship Wt. with Restrains (Saddles)		Shipping Weight	
	Gal	Lit	Gal	Lit	In	mm	In	mm		F		G		H		Lbs	Kg	Lbs	Kg
AX-10-DD	6.4	24.2	3.2	12.1	12	305	18	457	1/4"	N/A	N/A	N/A	N/A	N/A	N/A	N/A	N/A	9	4
AX-15-DD	8.6	33.0	3.2	12.1	12	305	22	559	3/4"	N/A	N/A	N/A	N/A	N/A	N/A	N/A	N/A	22	10
AX-20-DD	16.5	63.0	11.3	43.0	15	381	25	636	3/4"	N/A	N/A	N/A	N/A	N/A	N/A	N/A	N/A	44	20
AX-40-DD	23.0	88.0	11.3	43.0	15	381	33	838	3/4"	N/A	N/A	N/A	N/A	N/A	N/A	N/A	N/A	64	29

Head & Shell Horizontal ASME Models

Model Number	Tank Volume		Max. Accept. Volume		A Tank Diameter		B Tank Length		Sys. Conn	Restrains (Saddles) for Horizontal Mounting						Ship Wt. with Restrains (Saddles)		Shipping Weight	
	Gal	Lit	Gal	Lit	In	mm	In	mm		F		G		H		Lbs	Kg	Lbs	Kg
AX-60	33.6	127.2	11.3	42.8	16	356	43	1073	1/2"	36%	918	14	356	12	305	116	53	96	44
AX-80	44.4	168.1	22.6	85.5	24	610	29	725	1"	16%	429	20	508	18	457	173	78	153	69
AX-100	55.7	211.8	22.6	85.5	24	610	33	840	1"	21%	546	20	508	18	457	194	88	174	79
AX-120	68.0	257.4	34.0	128.7	24	610	41	1051	1"	29%	749	20	508	18	457	235	107	204	93
AX-144	77.0	291.5	34.0	128.7	24	610	46	1170	1"	34%	873	20	508	18	457	246	112	218	99
AX-180	90.0	340.7	34.0	128.7	24	610	54	1357	1"	41%	1060	20	508	18	457	248	113	232	105
AX-200	110.0	416.4	34.0	128.7	24	610	64	1624	1"	52%	1327	20	508	18	457	306	139	269	122
AX-240	132.0	500.0	46.0	174.0	30	762	51	1295	1"	35	889	24	610	22	559	428	194	401	182
AX-260	159.0	600.0	56.0	212.0	30	762	62	1581	1 1/4"	44%	1124	24	610	22	559	480	218	455	206
AX-280	211.0	800.0	84.0	318.0	30	762	80	2032	1 1/4"	62	1575	24	610	22	559	660	299	580	263

All dimensions and weights are approximate.

*AX-10 is the only model that can be suspended from the pipes.

Job Name _____

Notes _____

Engineer _____

Contractor _____

P.O. No. _____

Sales Rep. _____

Model No. _____



DURA-POWER™

Designed for use as a recovery heater having its own storage tank. Available in upright standard models (DEN) and lowboy models (DEL).

GLASSLINED TANK

- Thirteen sizes; 6 thru 119 gallon capacity. Tank interior is coated with glass specially designed by A. O. Smith for water heater use.

ELEMENTS

- Zinc plated copper sheaths for longer life. Medium watt density means lower surface temperature to minimize scale build-up and more surface to heat water. Element sizes from 1.5 to 6 KW. Maximum input 12 KW (see chart).

STANDARD VOLTAGES

- 120, 277 single phase and 208, 240 and 480V unbalanced three-phase delta; easily converted to single-phase at terminal block (except 208V with 5500 watt elements). Single element heaters, single-phase only.

TERMINAL BLOCK

- Factory-installed. Just bring the service to heater and connect to block. Terminal block not supplied on 120V & 277V models. (No junction box on DEL6-20)

CONTROLS

- Temperature control (adjustable through a range of 110° to 170°F on single element and 120° to 181°F on dual element) and manual reset high temperature cutoff per element.

CSA CERTIFIED AND ASME RATED T&P RELIEF VALVE

SIMPLIFIED CIRCUITRY, COLOUR CODED FOR EASE OF SERVICE

ANODE ROD FOR MAXIMUM CORROSION PROTECTION

CABINET HAS BONDERIZED UNDERCOAT WITH BAKED ENAMEL FINISH

DRAIN VALVE (EXCLUDES DEL 6-20)

UL APPROVED FIELD CONVERSION PROGRAM

COMPLIANCE

- Meets the standby loss requirements of NRCAN and current edition of ASHRAE/IES 90.1.

LIMITED WARRANTY OUTLINE

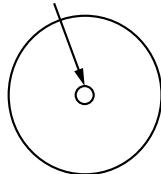
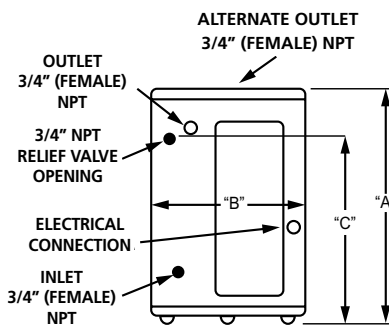
- If the tank should leak any time during the first three years, under the terms of the warranty, A. O. Smith will furnish a replacement heater; installation, labour, handling and local delivery extra. THIS OUTLINE IS NOT A WARRANTY. For complete information consult the written warranty or A. O. Smith.





Commercial Electric Water Heaters

HOT WATER OUTLET DEL-6

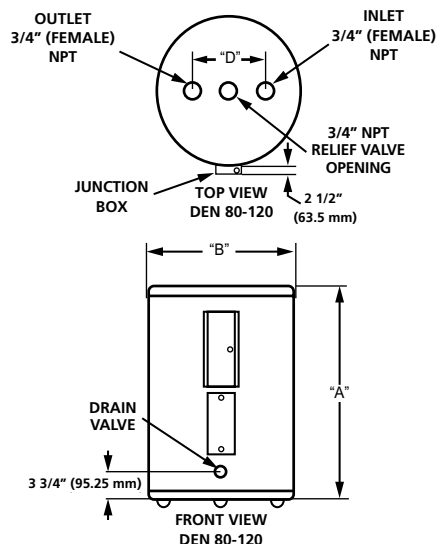
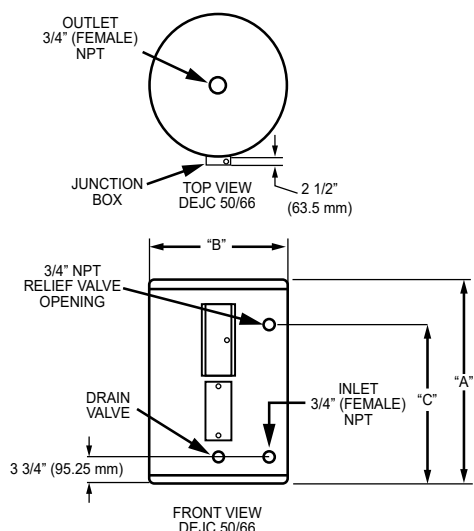
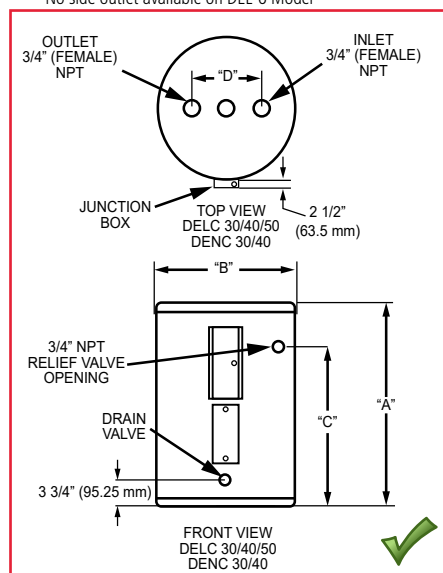
Top View
DEL 6/10/15/20FRONT VIEW
DEL 6/10/15/20

*(NO SIDE OUTLET AVAILABLE FOR DEL-6 MODELS)

ROUGH-IN DIMENSIONS

MODEL NUMBER	NO. OF ELEMENTS	TANK CAPACITY		STANDBY LOSS WATTS	A		B		C		D		SHIPPING WEIGHT	
		USG	L		IN	MM	IN	MM	IN	MM	IN	MM	LB	KG
DEL-6	1	6	23	N/A	15-1/2	394	14-1/4	362	11	279	N/A	N/A	35	16
DEL-10	1	10	37	N/A	18-1/4	464	18	457	12-1/2	318	N/A	N/A	54	25
DEL-15	1	13	49	49	26	660	18	457	20-1/2	521	N/A	N/A	58	26
DEL-20	1	19	74	54	22-1/4	565	21-3/4	552	15-3/8	391	N/A	N/A	73	33

* No side outlet available on DEL-6 Model



ROUGH-IN DIMENSIONS

MODEL NUMBER	NO. OF ELEMENTS	TANK CAPACITY		STANDBY LOSS WATTS	A		B		C		D		SHIPPING WEIGHT	
		USG	L		IN	MM	IN	MM	IN	MM	IN	MM	LB	KG
DELC-30	2	27	103	46	31-5/8	803	24	610	21-15/16	557	8	203	120	54
DELC-40	2	36	138	53	33-7/8	860	26	660	23-7/8	606	8	203	115	52
DELC-50	2	50	190	63	36	914	26-1/2	673	26-1/8	664	8	203	175	79
DENC-30	2	29	109	47	39-7/8	1013	22	559	30-7/16	773	8	203	100	45
DENC-40	2	38	145	54	49-7/8	1267	20-1/2	521	40-3/4	1035	8	203	103	47
DEJC-50	2	49	184	77	48-1/4	1226	22	559	40-5/16	1024	Side Inlets	-	127	58
DEJC-66	2	63	237	87	60-1/2	1537	22	559	52-3/4	1340	Side Inlets	-	150	68
DEN-80	2	75	284	86	59-3/8	1508	24	610	N/A	N/A	8	203	211	96
DEN-120	2	113	428	146	62-7/16	1586	29-3/8	746	N/A	N/A	8	203	326	148

ELEMENT AVAILABILITY CHART (LIGHT-DUTY COMMERCIAL ELECTRIC)

MODELS & ELEMENTS	VOLTAGE	WIRING	KW INPUT AVAILABLE									
6-GALLON MODELS SINGLE-ELEMENT	120V	-	1.5	2	2.5	3						
	208V	-	1.5	2	2.5	3						
	240V	-	1.5	2	2.5	3						
	277V	-	1.5	2	2.5	3						
	480V	-		2	2.5	3						
10-GALLON THROUGH 20-GALLON MODELS SINGLE-ELEMENT	120V	-	1.5	2	2.5	3						
	208V	-	1.5	2	2.5	3	3.5	4	4.5	5	5.5	6
	240V	-	1.5	2	2.5	3	3.5	4	4.5	5	5.5	6
	277V	-	1.5	2	2.5	3		4	4.5	5		6
	480V	-		2	2.5	3		4	4.5	5	5.5	6
30-GALLON THROUGH 120-GALLON MODELS DOUBLE-ELEMENT	120V	Interlock	1.5	2	2.5	3						
		Simultaneous	3	4	5	†						
	208V	Interlock	1.5	2	2.5	3	3.5	4	4.5	5	5.5	6
		Simultaneous	3	4	5	6	7	8	9	10**	11**	†
	240V	Interlock	1.5	2	2.5	3	3.5	4	4.5	5	5.5	6
		Simultaneous	3	4	5	6	7	8	9	10	11	12**
	277V	Interlock	1.5	2	2.5	3		4	4.5	5		6
		Simultaneous	3	4	5	6		8	9	10		12
	480V	Interlock		2	2.5	3		4	4.5	5	5.5	6
		Simultaneous		4	5	6		8	9	10	11	12

6 gallon model not available above 3kW
 6/10/15/20 gallon models all A6 circuit (2 wire) only
 † Exceeds maximum amp draw.
 ** Simultaneous only in 3ph

ELECTRIC CHARACTERISTICS

ELECTRIC CHARACTERISTICS													
NON SIMULTANEOUS AND SINGLE ELEMENT OPERATION 6 - 120 GALLON					SIMULTANEOUS DUAL ELEMENT OPERATION (SINGLE PHASE CONNECTION) 30 - 120 GALLON					SIMULTANEOUS DUAL ELEMENT OPERATION (UNBALANCED THREE PHASE CONNECTION) 30 - 120 GALLON			
ELEMENT WATTAGE	FULL LOAD CURRENT IN AMPERES (TERMINALS - L1, L2)				ELEMENT WATTAGE	FULL LOAD CURRENT IN AMPERES (TERMINALS - L1, L2)				ELEMENT WATTAGE	FULL LOAD CURRENT IN AMPERES (TERMINALS - L2 / TERMINAL L1 & L3)		
Upper/Lower	120V	208V	240V	480V	Upper/Lower	120V	208V	240V	480V	Upper/Lower	208V	240V	480V
1500	12.5	7.2	6.3	3.2	1500/1500	25.0	14.4	12.5	6.3	1500/1500	12.4/7.2	10.8/6.3	5.4/3.2
2000	16.7	9.6	8.3	4.2	2000/2000	33.4	19.2	16.6	8.3	2000/2000	16.6/9.6	14.4/8.3	7.2/4.2
2500	20.8	12.0	10.4	5.2	2500/2500	41.6	24	20.8	10.4	2500/2500	20.8/12.0	18.0/10.4	9.0/5.2
3000/3000	25.0	14.4	12.5	6.3	3000/3000	N/A	28.8	25	12.5	3000/3000	25.0/14.4	21.6/12.5	10.8/6.3
4000/4000	N/A	19.2	16.7	8.3	4000/4000	N/A	38.4	33.3	16.6	4000/4000	33.3/19.2	28.8/16.7	14.4/8.3
4500/4500	N/A	21.6	18.8	9.4	4500/4500	N/A	43.2	37.5	18.75	4500/4500	37.4/21.6	32.4/18.8	16.2/9.4
5000/5000	N/A	24.0	20.8	10.4	5000/5000	N/A	N/A	41.6	20.8	5000/5000	41.6/24.0	36.0/20.8	18.0/10.4
6000/6000	N/A	28.8	25.0	12.5	6000/6000	N/A	N/A	N/A	25	6000/6000	N/A	43.3/25.0	21.6/12.5



Commercial Electric Water Heaters

RECOVERY CAPACITIES

ELEMENT WATTAGE (UPPER/ LOWER)	INPUT	U. S. GALLONS/HR AND LITRES/HR AT TEMPERATURE RISE INDICATED											
		F°	36	40	54	60	72	80	90	100	108	120	126
	KW	C°	20	22.2	30	33.3	40	44.4	50	55.5	60	66.6	70
NON-SIMULTANEOUS OPERATION													
/1500	1.5	GPH	17	15	11	10	8	8	7	6	6	5	5
		LPH	64	58	43	38	32	29	26	23	21	19	18
/2000	2	GPH	23	20	15	14	11	10	9	8	8	7	6
		LPH	85	77	57	51	43	38	34	31	28	26	24
/2500	2.5	GPH	28	25	19	17	14	13	11	10	9	8	8
		LPH	107	96	71	64	53	48	43	38	36	32	30
3000/3000	3	GPH	34	30	23	20	17	15	14	12	11	10	10
		LPH	128	115	85	77	64	58	51	46	43	38	37
3500/3500	3.5	GPH	40	36	26	24	2	18	16	14	13	12	11
		LPH	151	136	98	90	75	68	60	52	49	45	41
4000/4000	4	GPH	45	41	30	27	23	20	18	16	15	14	13
		LPH	170	153	114	102	85	77	68	61	57	51	49
4500/4500	4.5	GPH	51	46	34	30	25	23	20	18	17	15	14
		LPH	192	173	128	115	96	86	77	69	64	58	55
5000/5000	5	GPH	56	51	38	34	28	25	23	20	19	17	16
		LPH	213	192	142	128	107	96	85	77	71	64	61
5500/5500	5.5	GPH	63	56	42	37	31	28	25	22	21	18	18
		LPH	238	211	158	140	117	105	94	83	79	68	68
6000/6000	6	GPH	68	61	45	41	34	30	27	24	23	20	19
		LPH	256	230	170	153	128	115	102	92	85	77	73
SIMULTANEOUS OPERATION													
3000/3000	6	GPH	68	61	45	41	34	30	27	24	23	20	19
		LPH	256	230	170	153	128	115	102	92	85	77	73
3500/3500	7	GPH	80	72	53	48	40	36	32	28	26	24	22
		LPH	302	272	200	181	151	136	121	105	98	90	83
4000/4000	8	GPH	90	81	60	54	45	41	36	32	30	27	26
		LPH	341	307	227	205	170	153	136	123	114	102	97
4500/4500	9	GPH	101	91	68	61	51	46	41	36	34	30	29
		LPH	384	345	256	230	192	173	153	138	128	115	110
5000/5000	10	GPH	113	101	75	68	56	51	45	41	38	34	32
		LPH	426	384	284	256	213	192	170	153	142	128	122
5500/5500	11	GPH	126	113	84	75	63	56	50	45	42	37	36
		LPH	476	427	317	283	238	211	189	170	158	140	136
6000/6000	12	GPH	135	122	90	81	68	61	54	49	45	41	39
		LPH	511	460	341	307	256	230	205	184	170	153	146

Recovery capacities at 100° F rise equal: for non-simultaneous element operation = 4.1 gal. x kW of one element; for simultaneous element operation = 4.1 gal. x 2/3 kW of both elements.
For other rises multiply element kW as previously explained by 410 and divide by temperature rise. Full load current for single phase = total watts/voltage.

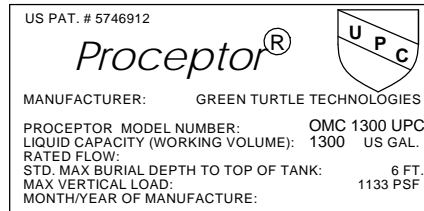
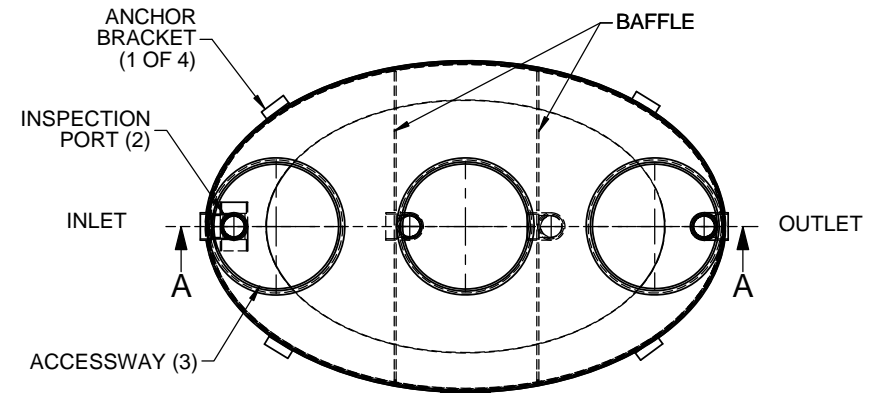
SPECIFICATION

The water heaters(s) shall be Dura-Power™ Model(s) No. _____ as manufactured by A. O. SMITH or an approved equal. Heater(s) shall be rated at _____ kW, _____ volts, _____-phase, 60 cycle AC, and listed by Underwriters' Laboratories. Models shall meet the standby loss requirements of NRCan and current edition of ASHRAE/IES 90.1. Tank(s) shall be _____ gallon capacity. Heater(s) shall have 150 psi working pressure and be equipped with extruded high density anode rod. All internal surfaces of the heater(s) exposed to water shall be glasslined with an alkaline borosilicate composition that has been fused-to-steel by firing at a temperature range of 1400°F to 1600°F. Electric heating elements shall be medium watt density with zinc plated copper sheath. Each element shall be controlled by an individually mounted thermostat and high temperature cutoff switch. The outer jacket shall be of backed enamel finish and shall enclose the tank with foam insulation. Electrical junction box with heavy duty terminal block shall be provided (except on 120V & 277V {no junction box on DEL-6 thru 20}). The drain valve shall be located in the front for ease of servicing. Heater tank shall have a three year limited warranty as outlined in the written warranty. Fully illustrated instruction manual to be included.

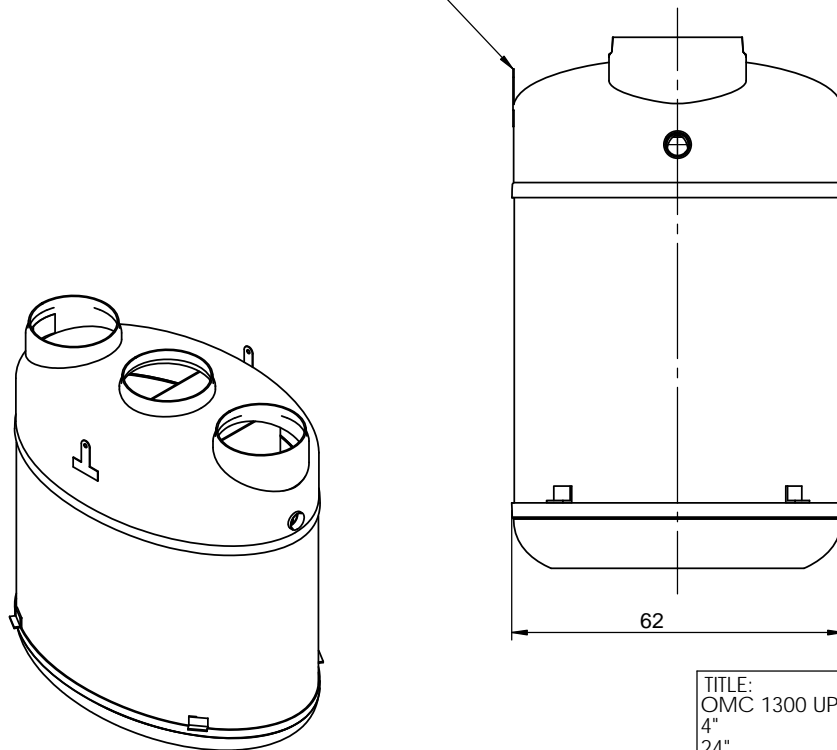
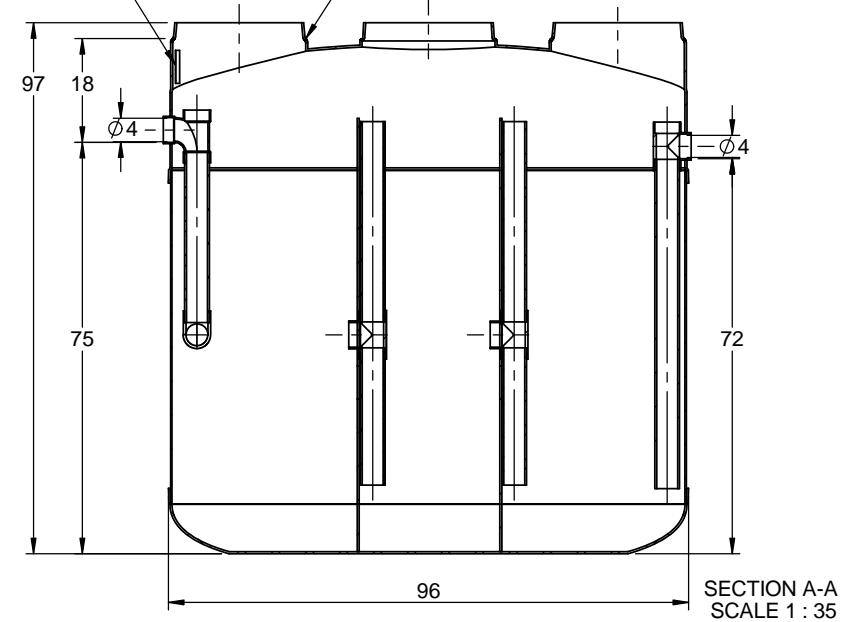
For Technical Information call 888-599-2837. A. O. Smith Enterprises Ltd. reserves the right to make product changes or improvements without prior notice.

NOTES:

1. FOR GRAVITY APPLICATIONS ONLY.
2. ALL PROCEPTOR UNITS ARE MANUFACTURED WITH FIBERGLASS REINFORCED PLASTICS. PHYSICAL CHARACTERISTICS AND THICKNESS: POLYESTER RESIN AND E GLASS
3. ALL PROCEPTOR UNITS ARE TO BE INSTALLED IN ACCORDANCE WITH THE MANUFACTURERS INSTALLATION INSTRUCTION.
4. STANDARD PIPING IS SCH. 40 PVC.
5. GMC/OMC 500 - 3000 UNITS COME STANDARD WITH 4" INLET AND OUTLET (OTHER PIPE SIZE OPTIONS AVAILABLE ON REQUEST).
6. EXTENSION COLLAR TO BE ORDERED TO MEET FINISHED GRADE, CUT ON SITE FOR FINAL ADJUSTMENT AND CAULKED WITH SIKAFLEX BY CONTRACTOR FOR WATERTIGHT SEAL.
7. COVERS AVAILABLE FOR H2O TRAFFIC LOADING.
8. PEDESTRIAN LOADING OR ABOVE GROUND INSTALLATION.
9. CONSULT GREEN TURTLE FOR OTHER SIZES.
10. 30 YEAR WARRANTY AGAINST LEAKS, AND STRUCTURAL FAILURE.
10. U.S. PATENT #5,746,912; CDN PATENT #2,195,822

**DETAIL "A"**

STEEL LIFTING LUGS

DETAIL "A"
LABEL INSIDE
AND OUTSIDEEXTENSION
COLLAR SEAT

MANUFACTURED IN COMPLIANCE WITH
IAPMO PS 80-2008

TITLE: PROCEPTOR		REV	DATE	DRAWN
OMC 1300 UPC GALLON INTERCEPTOR		1	6/15/04	F. CHANDLER
4" INLET & OUTLET		2	9/15/05	
24" ACCESSWAYS		3	DEC. 27, 2006	L. SIMKINS
PROJECT: WO:		4	SEPTEMBER 15, 2009	L. SIMKINS
		5	NOVEMBER 17, 2009	L. SIMKINS
		6	APRIL 5, 2012	L. SIMKINS
		7	FEBRUARY 14, 2013	S. MANGAT
AVAILABLE OPTIONS (CHECKED IF REQUESTED)		8	JULY 17, 2015	
OIL/GREASE SENSOR ALARM		9		
SUCTION PIPE FOR INDOOR INSTALLATION		10		
COALESCER (FOR OIL ONLY) 10ppm TREATMENT				
DOUBLE WALL CONSTRUCTION				
		DRAWN BY: F. CHANDLER		
		DATE DRAWN: 6/15/04		

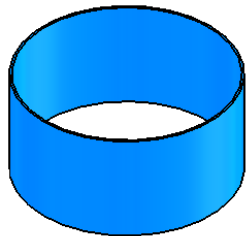
Proceptor®
by greenturtle®

US 877 428 8187 CAN 877 966 9444
www.greenturtletech.com

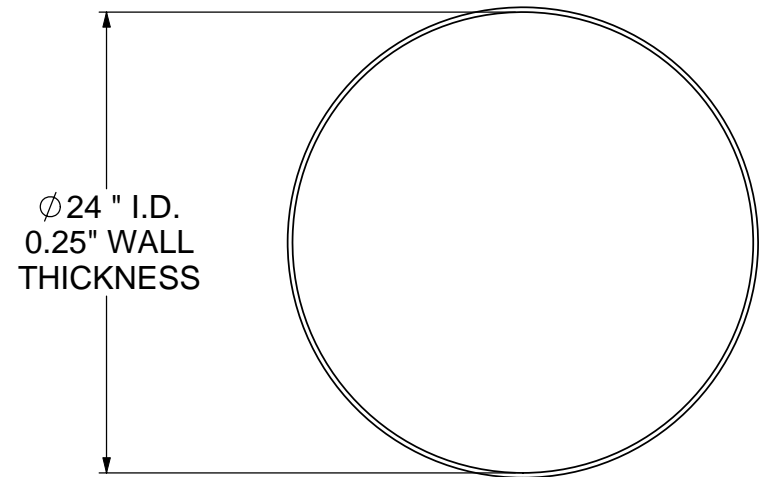
SIZE	DWG. NO.	REV.
A	OMC 1300	8
SCALE: 1:35	DO NOT SCALE DRAWING	SHEET 1 OF 1

FIBERGLASS EXTENSION COLLAR

- Designed to mate to Green Turtle Tanks to connect underground tank access to grade level.
- Fiberglass Reinforced Plastic extension collar shall have a 588 mm (24 in.) inner diameter, a minimum wall thickness of 6.35mm (0.25 in)
- FRP shall comply with the applicable material requirements of CSA B66 and shall be tested for corrosion resistance by exposure to adverse conditions in accordance with ASTM C 581
- FRP shall be capable of withstanding liquid temperatures of 70°C (160 °F) without deforming
- Minimum weight is 18.8 kg/linear meter (12.7 lbs per linear foot).
- When fiberglass access frame and cover used, collar to be factory sealed to fiberglass frame.
- When cast iron cover used, cast iron frame slip fits over collar, but to be positioned not to weight bear on collar. A watertight seal between frame and collar is recommended.
- To be bonded to the FRP interceptor during installation using Sikaflex 255 FC or 221. Sikaflex has been tested to provide an exceptional FRP to FRP seal. Use of substitute bonding material or non-FRP materials for the extension collar may jeopardize this seal, potentially resulting in water infiltration or waste exfiltration from the system.
- Order extension collar with tank. For quantity calculation, see Drawing "Collar Height". Quantity based on invert elevation below grade. Trim on site to fit.
- Use as a single continuous length for structural integrity. Green Turtle does not recommend joining two pieces of 24" dia extension.
- 0.92 m. dia size (3 ft.) EC3 also available for 2.37 m dia. (92") tanks. EC3 recommended for Proceptor units with coalescers or tanks requiring frequent access. EC3 requires a 0.92 m dia. (36") tank neck with a 0.92 m x .59 m (36"x 24") reducer to mate to FC FRP B or FCH G4 frame and cover at grade.

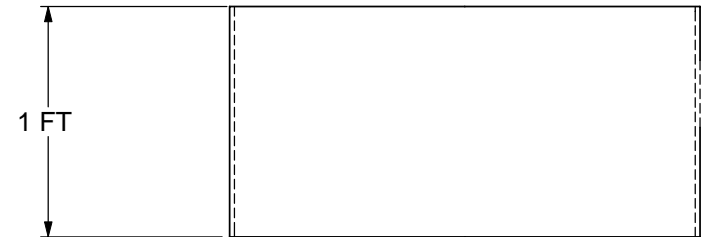


ISOMETRIC VIEW



TOP VIEW

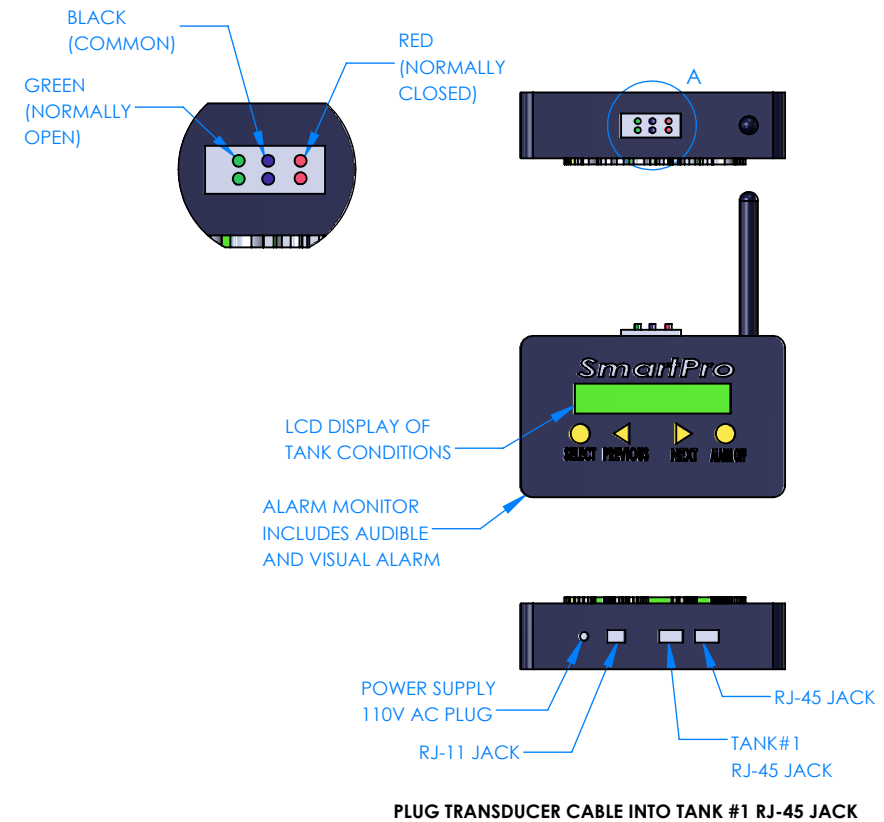
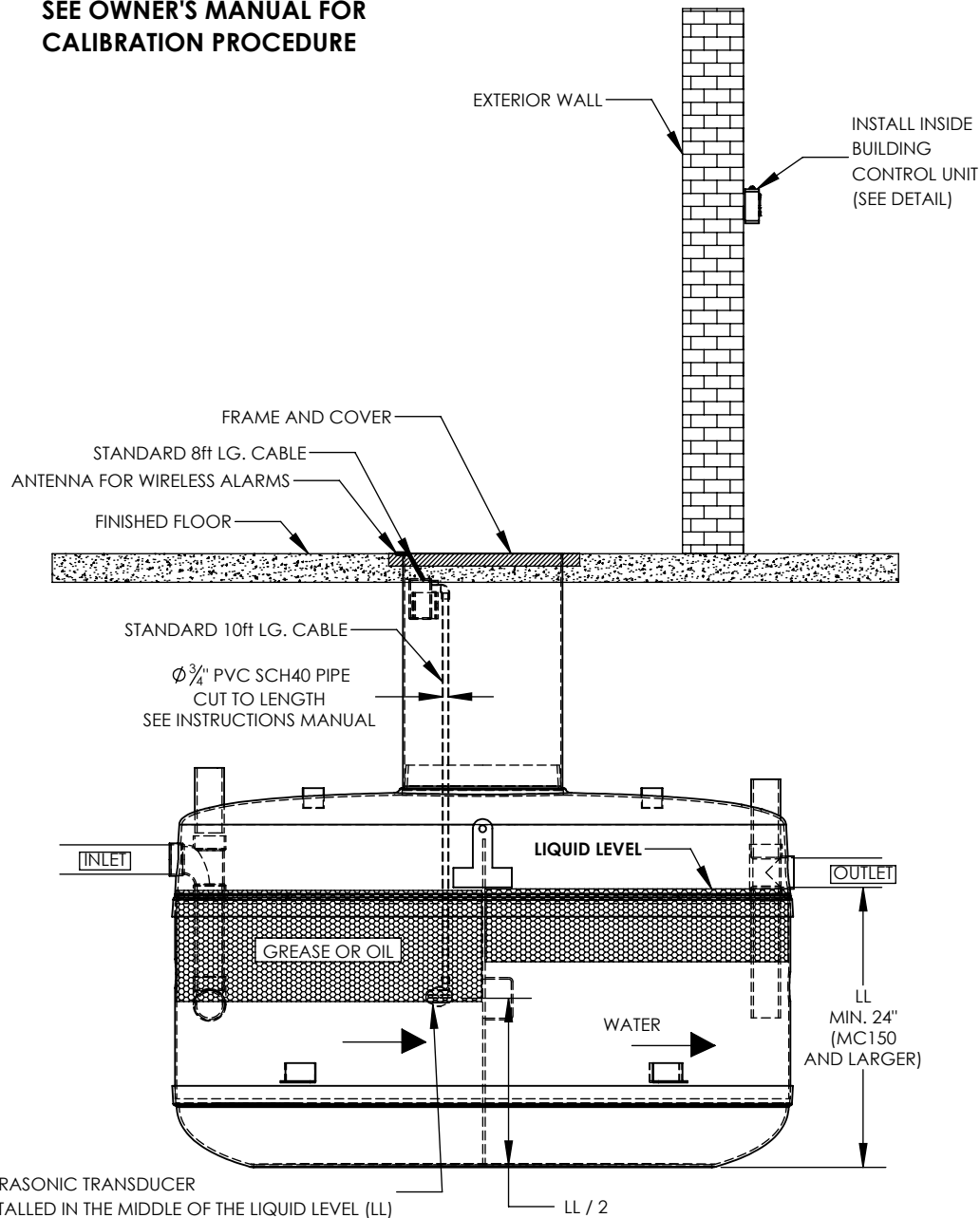
UNIT OF
MEASURE



SIDE VIEW

TITLE: 2 FT. DIA. FIBERGLASS REINFORCED PLASTIC EXTENSION COLLAR		REV	DATE	DRAWN	<div>greenturtle[®]</div> <div>US 877 428 8187 CAN 877 966 9444</div> <div>www.greenturtletech.com</div>			
		1	SEPTEMBER 3, 2008	L. SIMKINS				
		2	OCTOBER 24, 2008	L. SIMKINS				
		3	SEPTEMBER 17, 2010	L. SIMKINS				
		4						
PROJECT: WO:		5						
		6						
		7						
		8						
		9						
		10			SIZE	DWG. NO.		REV.
		DRAWN BY: LISA SIMKINS			A	EC2		3
		DRAWN DATE: OCTOBER 28, 2005			SCALE:varies		DO NOT SCALE DRAWING	SHEET 1 OF 1

SEE OWNER'S MANUAL FOR
CALIBRATION PROCEDURE



PLUG TRANSDUCER CABLE INTO TANK #1 RJ-45 JACK

ULTRASONIC TRANSDUCER
INSTALLED IN THE MIDDLE OF THE LIQUID LEVEL (LL)

ALARM IS SHOWN TO BE INSTALLED
ON INLET SIDE OF TANK

1. TANKS INSTALLED IN SERIES (EX. GMC 2000(2)) WILL HAVE ALARM INSTALLED IN THE FIRST TANK OUTLET SIDE
2. SINGLE TANKS (WITH BAFFLE) WILL HAVE ALARM INSTALLED ON THE INLET SIDE (BOTH INLET AND OUTLET INSTALLATION IS ALLOWED BUT GT RECOMMENDS INLET)

SKU 4630

INTERNAL PART #G4-4641

DWG. TITLE:
SMARTPRO WIRELESS
ALARM G4 INLET SIDE
INSTALLATION

PROJECT:

SIZE
A

DRAWING NOT TO SCALE

Proceptor®
ZURN®

DWG #: 21-5529-S

REV. 0