



54 Audia Court, Unit 2  
Concord, ON L4K 3N5  
(905)-738-1400

## Submittal 24-256-019

PROJECT NAME	PROJECT ADDRESS	DATE SUBMITTED
NESHAMA HOSPICE	24-256 3 Cadillac Avenue North York, ON M3H 1R9	Jan 10, 2025

TO	FROM
Taranjeet Singh	INZAMAN KHAN
COMPANY	COMPANY
1568796 ONTARIO INC. C/A RENOKREW	Consult Mechanical Inc.
EMAIL	EMAIL
taranjeet@renokrew.com	inzaman@consultmechanical.com
ADDRESS	ADDRESS
43 LEPAGE COURT TORONTO, ON M3J 1Z9	54 Audia Court, Unit 2 Concord, ON L4K 3N5

---

### Title

Digital Mixing Center

---

### Description

THE BRAIN® MODEL DMC50

---

### Package Items

SPEC	SUBSECTION	ITEM	TYPE
------	------------	------	------

# THE BRAIN® MODEL DMC50

## DIGITAL MIXING CENTER

The Digital Mixing Center (DMC) is designed to be the primary water temperature controller in a recirculating hot water system. DMC50 features a digital recirculation valve (The Brain®).

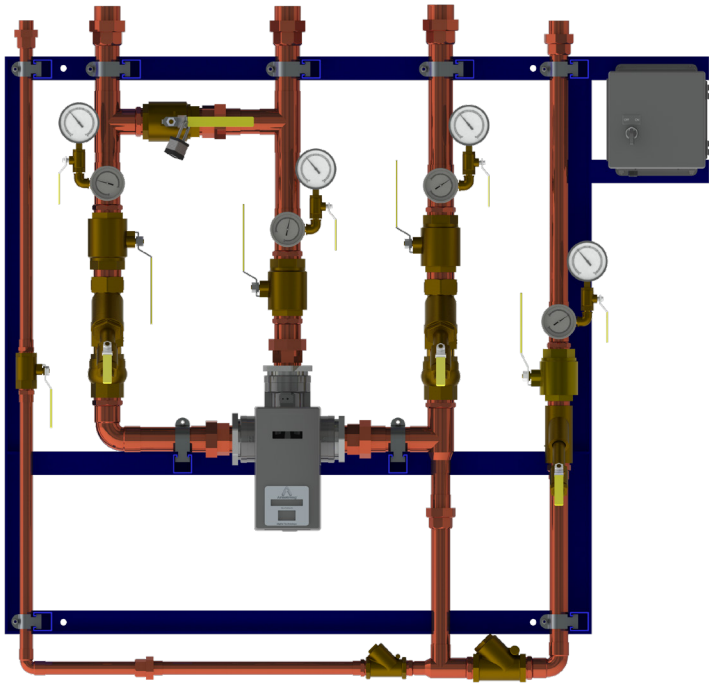
Engineered exclusively for continuously recirculated hot water systems, DMC50 improves system performance and safety by delivering a consistent preset temperature to the points of use.

Innovative digital technology resists “temperature creep” during periods of zero system demand which eliminates the requirement for manual throttling valves, supplementary RTD or a temperature actuated switch to control the pump.

Energy efficient, low temperature loss systems can be implemented by the ability of DMC50 to operate with a system return differential of just 1° F below set point.

User safety and overall system health is maintained by a series of programmable temperature alerts, onboard operational self-diagnostics, and a thermal disinfection option.

DMC50 is a complete pre-piped assembly inclusive of isolation valves, check valves, strainers, thermometers, and pressure gauges, and is provided with five connection points for simplified installation.



The Brain® Digital Mixing Center DMC50

DMC50 Performance Chart: Pressure Drop (in PSIG) to Flow Rate (in GPM)							
DRV50	Pressure Drop (PSIG)				Minimum System Draw-Off	Minimum Flow Rate	C <sub>v</sub>
	5	10	15	20			
GPM	94	133	163	188	0 GPM	10 GPM	42

DMC50 Performance Chart: Pressure Drop (in BARG) to Flow Rate (in LPM)							
DRV50	Pressure Drop (BARG)				Minimum System Draw-Off	Minimum Flow Rate	K <sub>v</sub>
	0.3	0.7	1.0	1.4			
LPM	355.8	503.5	617	711.1	0 LPM	38 LPM	36.33

Designs, materials, weights, and performance ratings are approximate and subject to change without notice. Visit [armstronginternational.com](http://armstronginternational.com) for the most up-to-date information.

# THE BRAIN® MODEL DMC50

## TECHNICAL SPECIFICATIONS

General		
Protection	NEMA 3S, IPX4	
Ambient Temperature	Minimum Ambient Temperature: 35°F (2°C)	Maximum Ambient Temperature: 122°F (50°C)
Ambient Humidity	95% Non-Condensing	
Installation Environment	Suitable for indoor use only	
Materials	Valve: Stainless Steel, Electronics Module: PC / ABS	
Safety	Seven fail-safe cold triggers supported by integral self-diagnostics and a programmable over-temp limit	
Connections		
DRV Connections	2" NPT	
Hot & Cold Water Inlet Connections	2" SWT	
Mixed Water Outlet Connections	2" SWT	
Recirc. Mixed Return Connection	1-1/2" SWT	
Return to Heater Connection	1" SWT	
Pressures		
Inlet Supply Pressures	Max. Pressure (DRV): 200 psi / 1379 kPA = 13.8 bar	Minimum Pressure: 20 psi / 138 kPA = 1.5 bar
	Max. Pressure (Manifold): 150 psi / 1034 kPA = 10.3 bar	
Supply Pressure Differential	Nominally equal	
Temperatures		
Hot Water Supply Temperature	Maximum Inlet Hot Supply Temperature: 185°F (85°C)	Minimum Inlet Hot Supply Temperature: 5°F (2°C) above DRV set point
Cold Water Supply Temperature	Minimum Inlet Cold Supply Temperature: 35.6°F (2°C)	
Min. Recirculation Temperature Loss	1°F ( ≤ 1°C)	
Min. Continuous Recirculation Flow	10 GPM (38 LPM)	
Recirculation Circuit		
Minimum Distance to First Outlet	25 ft (7.6 m)	
Electrical		
Power Supply	120 - 240V AC - 50/60 Hz	
Supply Fuse / Circuit Breaker	Grounding required (Switched Type 3 Amp - no plug; 15 Amp Grounding-type receptacle - plug)	
Battery	Qty (2) CR - P2 6V	
Configurable Settings		
Set Point Range	81°F to 158°F (27°C to 70°C)	
High Temperature Alert	Minimum of 2°F (1°C) above DRV set point	
High Temperature Error	5°F (2°C) above DRV set point	
Thermal Disinfection Temperature	Programmable range of 158°F to 185°F (70°C to 85°C)	
Thermal Disinfection Set-Up	Disinfection Duration: ≤ 100 minutes	Disinfection Cool Down Duration: ≤ 30 hours
Units of Measure	Degrees Fahrenheit ( °F ) or Degrees Celsius ( °C )	

*Continued on next page*

Designs, materials, weights, and performance ratings are approximate and subject to change without notice. Visit [armstronginternational.com](http://armstronginternational.com) for the most up-to-date information.



# THE BRAIN® MODEL DMC50

## TECHNICAL SPECIFICATIONS

Connectivity	
Modbus RTU	RS-485 port for connection to building automation systems (BAS) operating on Modbus RTU protocol
SAGE® Module	RS-485 port for connection to SAGE® module with Modbus TCP, BACnet TCP/IP, BACnet MSTP, or LonWorks protocessor <i>Note: Protocessors for other BAS protocols may be available upon request</i>
SAGE® Subscription	Real-time monitoring, recording, and documentation dashboard for Armstrong Hot Water Systems
Standards and Approvals	
ASSE 1017	Certified & Listed
CSA B125.3-11	Compliant
UL	Listed
CE	Listed

Designs, materials, weights, and performance ratings are approximate and subject to change without notice. Visit [armstronginternational.com](http://armstronginternational.com) for the most up-to-date information.



# THE BRAIN® MODEL DMC50

## WRITTEN SPECIFICATIONS

**Category:** The Brain®

**Type:** Digital Mixing Center

**Model:** Model DMC50

### Part 1 - GENERAL

#### 1.0 Digital Mixing Center

- 1.1 One (1) Digital Recirculation Valve (DRV) shall be supplied pre-piped and pressure-tested as a lead-free Digital Mixing Center (DMC) complete with hot water inlet, cold water inlet, mixed water outlet, recirculation return inlet, and return to heater connections.
- 1.2 DMC50 shall comprise of (1) DRV50 pre-wired to an electrical panel, isolation valves, strainers, check valves, thermometers, and pressure gauges assembled on Type L copper with hot water bypass securely mounted on a carbon steel frame with industrial grade enamel paint.

#### 2.0 Digital Recirculation Valve

- 2.1 DRV shall have four thermistors integral of the mixing valve body that measure the cold water and recirculation return inlet, hot water inlet, mixed water outlet, and over-temp safety measures.
- 2.2 DRV mixing valve body shall be of 316L stainless steel, mixing valve proportioner of 316L stainless steel, and a NEMA 3S electronics enclosure.
- 2.3 DRV50 shall have 2" inlet and outlet connections that will deliver 133 gpm @ 10 psid.
- 2.4 DRV shall be capable of + / - 2°F control during high, low, or extended periods of zero demand on the system, with a continuous recirculation of >10 gpm. Temperature control shall be achieved without aquastat-like control of the recirculation pump.
- 2.5 DRV setpoint shall be configured by the factory to customer specification. DRV shall be field adjustable.

#### 3.0 DRV50 shall have the following operational specifications:

- 3.1 + / - 2°F (1°C) water temperature control
- 3.2 1°F minimum mixed water outlet to recirculated return inlet differential (system temperature loss)
- 3.3 Minimum continuous recirculation of 10 gpm
- 3.4 Automatic shutoff of hot water upon cold water inlet supply failure
- 3.5 Automatic shutoff of hot water flow in the event of a power failure
- 3.6 Programmable setpoint range of 81°F - 158°F (27°C - 70°C)
- 3.7 Programmable thermal disinfection mode
- 3.8 Programmable 1st level hi/lo temperature alert display
- 3.9 Programmable temperature error level for safety shutdown

#### 4.0 DRV50 shall have the following connectivity specifications:

- 4.1 Modbus RS-485 port for connection to building automation system (BAS) operating on Modbus RTU protocol
- 4.2 RS-485 port for connection to SAGE® module with Modbus TCP, BACnet TCP/IP, BACnet MSTP, or LonWorks processor

*Note: Processors for other BAS protocols available upon request*

#### 5.0 DRV shall be certified to ASSE 1017, UL listed, and conform to CSA B125.

#### 6.0 Warranty

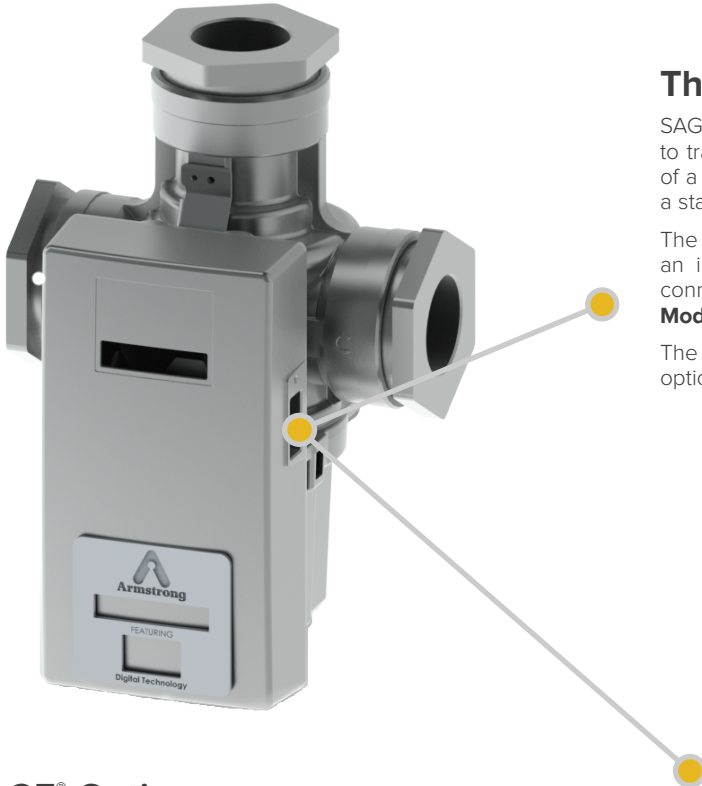
- 6.1 DRV shall have a 5-year warranty on all components, with the exception of batteries and O-rings.
- 6.2 Pre-piped DMC components shall have a 2-year warranty from date of installation, but not longer than 27 months from date of shipment.

Designs, materials, weights, and performance ratings are approximate and subject to change without notice. Visit [armstronginternational.com](http://armstronginternational.com) for the most up-to-date information.



# THE BRAIN® MODEL DMC50

## CONNECTIVITY



### The Brain® and SAGE®

SAGE® works seamlessly with The Brain® as it analyzes data to track behavior and performance as an integral component of a hot water system operation protocol which complies with a standard of care.

The Brain® and every derivative assembly is supplied with an integral RS-485 serial port. This port provides a direct connection to Building Automation Systems that operate on a **Modbus RTU** protocol.

The RS-485 port is also deployed for direct connection to an optionally supplied Building System (BS) Module.

### SAGE® Options

**SAGE® for Building Automation Systems (BAS)** – BS Module available with BAS specific ProtoCessor cards for connection to systems which operate on **Modbus TCP**, **BACnet™ TCP/IP**, **BACnet™ MSTP**, or **LonWorks™** protocols.

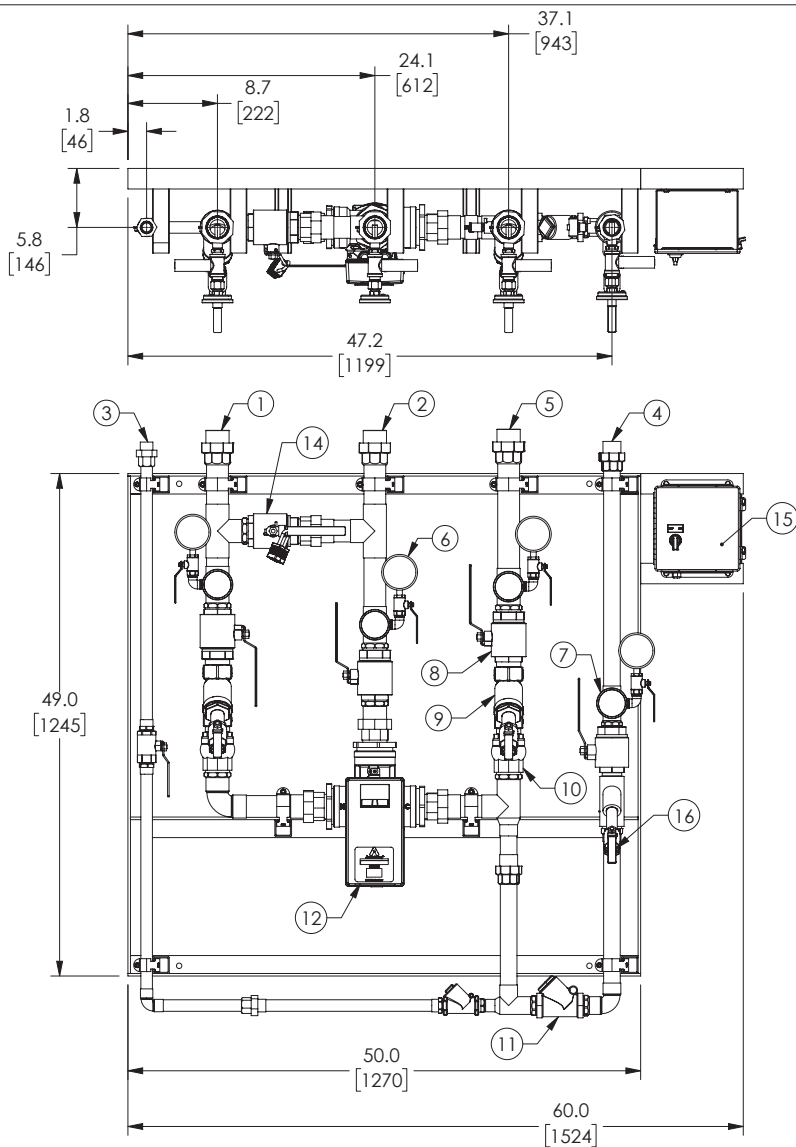
**SAGE® for Mobile Connectivity** - Featuring smart hot water system dashboard monitoring, secure remote programming, multi-location view, temperature and system diagnostic alerts, with unlimited digital documentation and automated report generation.

Mobile connectivity may be enabled by a customer activated no-term subscription.



### Optional Building System (BS) Module

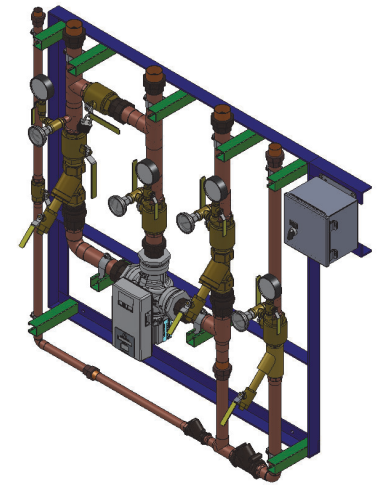
Adding a suffix “BS” to The Brain® DRV (example: DRV25BS) will automatically add SAGE®, the supplemental hardware and software required to maximize the connectivity features of Armstrong digital technology.



## APPROVAL

BY: \_\_\_\_\_ DATE: \_\_\_\_\_

- ☐ APPROVED, PROCEED WITH FABRICATION
- ☐ APPROVED AS NOTED, PROCEED WITH FABRICATION IN ACCORDANCE WITH COMMENTS
- ☐ DISAPPROVED, DO NOT FABRICATE



PROJECT NAME :

TAG :

ITEM NO.	DESCRIPTION	QTY	CONNECTION
1	HOT WATER INLET	1	2" SWT
2	MIXED WATER OUTLET	1	2" SWT
3	RETURN TO HEATER	1	1" SWT
4	RECIRC RETURN INLET	1	1-1/2" SWT
5	COLD WATER INLET	1	2" SWT
6	PRESSURE GAUGE	4	
7	THERMOMETER	4	
8	BALL VALVE	3	
9	STRAINER	2	
10	SPRING CHECK VALVE	2	
11	SWING CHECK VALVE	2	
12	DRV50	1	2" NPT
13	BLOW DOWN	2	1" NPT
14	SERVICE BY-PASS(NORMALLY CLOSED)	1	
15	ELECTRICAL PANEL	1	110VAC @ 0.7A
16	BLOW DOWN	1	3/4" NPT

ITEM		MATERIAL	
PIPING		COPPER TYPE "L"	
		<b>ARMSTRONG INTERNATIONAL</b> Copyright © 2010 ARMSTRONG INTERNATIONAL, INC. <b>DMC50 2 SWT 2 SWT 1-1/2 SWT CPR</b>	
		NAME DATE Jega Theesan 03/13/2015 MATERIAL SHEET 1 OF 1 CN56575 REVJ DWG. SALES	

NOTE(S):

- ALL DIMENSIONS +/- 0.5[13] UNLESS OTHERWISE SHOWN.
- COMPLETE ASSEMBLY LEAD FREE COMPLIANT - THE WETTED SURFACE OF THIS PRODUCT CONTACTED BY CONSUMABLE WATER CONTAINS LESS THAN ONE QUARTER OF ONE PERCENT (0.25%) OF LEAD BY WEIGHT.
- PACKAGE INCLUDES ALL REQUIRED INLET CHECK VALVES AND STRAINERS ON DOMESTIC SIDE.
- DRV AND ELECTRIC PANEL ARE PRE-WIRED TO PROVIDE A SINGLE ELECTRICAL LANDING POINT AT THE PANEL.
- REFERENCE ARMSTRONG PART NO. D40811

DO NOT SCALE DRAWING TOLERANCES UNLESS OTHERWISE SPECIFIED	
DIMENSIONING ENGLISH (mm)	
FRACTIONAL ± 1/64	
ANGULAR: ± 2	
DECIMAL	IN. MM
.XXX ± .0005	.010
.XX ± .005	.010
.X ± .015	.010
	.3