

**SHOP
DRAWING
REVIEW**

<input type="checkbox"/>
<input type="checkbox"/>
<input checked="" type="checkbox"/>
<input type="checkbox"/>

NOT REVIEWED
REVIEWED
REVIEWED AS NOTED
REVISE AND RESUBMIT

This review by Hilditch Architect Inc. is for the sole purpose of ascertaining conformance with the general design concept features only, and does not in any way constitute review of the design of engineering elements which form part of the Contract Documents prepared by others. This review shall not mean that Hilditch Architect Inc. approves the design detail inherent in the shop drawings, responsibility for which shall remain with the Contractor submitting same, and such review shall not relieve the Contractor of his responsibility for errors or omissions in the shop drawings or of his responsibility for meeting all requirements of the Contract Documents. The Contractor is responsible for dimensions to be confirmed and correlated at the job site, for information that pertains solely to fabrication processes or to techniques of construction and installation and for co-ordination of the work of all trades.

Hilditch Architect Inc.

By: Sasha Stairs

Project No: 1809

Date Rec'd:

Date Rev'd: 2024.12.03

GC/CM: 2024.12.02

Consultant: 2024.12.02

HAJ; reviewed for architectural only; 17 pages total:

1. Refer to Sustainglobe comments.
2. BF shower trench drain 'SH-1' to be submitted along with waterproofing system (shower kit).
3. Drain bodies to be set in concrete for proper drain support and to ensure no leakage from flange weepholes.
4. Drain types to be coordinated with flooring finish.

Submittal No. 24


Drains and Carriers

Project Name:
Neshama Hospice

Owner:
Neshama

Prime Consultant:
Hilditch Architect Inc

General Contractor: Renokrew

SHOP DRAWING <hr/> SUBMITTAL REVIEW	JOB NAME	Neshama Hospice
	JOB #	24-130
	DATE	Dec 02, 2024
REVIEWED	<p>This review is for general conformance of plans and specifications only. Approvals are subject to subcontractors performance within the confines of the contract documents. Review of dimensions will not serve to relieve the subcontractor of contractual responsibility for any deviation from the contract requirements.</p> <div>RENOKREW TORONTO OTTAWA</div> <p>CHECKED BY:</p> <p>REVIEWED BY:</p> <p>TOTAL PAGES: 17</p>	
REJECTED		
REVIEW & RESUBMIT		
REVIEW AS NOTED		
	SPECIFICATION	
	Div. 22	
	<input checked="" type="checkbox"/> SHOP DRAWING	
	<input type="checkbox"/> PRODUCT DATA	
	<input type="checkbox"/> DOCUMENTATION	
	<input type="checkbox"/> LETTER	

<i>SustainGlobe Ltd.</i>	
THIS DRAWING REVIEWED SOLELY FOR GENERAL CONFORMITY WITH DESIGN CONCEPTS. QUANTITIES, DETAILS, DIMENSIONS AND DESIGNS INHERENT IN THE SHOP DRAWINGS ARE THE CONTRACTOR'S RESPONSIBILITY TO VERIFY DATA WITH FIELD DIMENSIONS. CONTRACTOR IS SOLELY RESPONSIBLE FOR DESIGN OF MANUFACTURED ITEMS, FABRICATION PROCESSES AND TECHNIQUES OF CONSTRUCTION AND INSTALLATION OF EQUIPMENT.	
DATE RECEIVED: December 2, 2024	<input checked="" type="checkbox"/> MECHANICAL <input type="checkbox"/> ELECTRICAL <input type="checkbox"/> OTHERS
THIS DRAWING IS: <input type="checkbox"/> REVIEWED <input checked="" type="checkbox"/> REVIEWED AS NOTED <input type="checkbox"/> REVIEWED AND TO BE RESUBMIT	BY: EC DATE: December 2, 2024 PROJ. NO.: 18031



54 Audia Court, Unit 2
Concord, ON L4K 3N5
(905)-738-1400

Submittal 24-256-013

PROJECT NAME	PROJECT ADDRESS	DATE SUBMITTED
NESHAMA HOSPICE	24-256 3 Cadillac Avenue North York, ON M3H 1R9	Dec 2, 2024
TO	FROM	
Taranjeet Singh	PAUL LEDDY	
COMPANY	COMPANY	
1568796 ONTARIO INC. C/A RENOKREW	Consult Mechanical Inc.	
EMAIL	EMAIL	
taranjeet@renokrew.com	paul.l@consultmechanical.com	
ADDRESS	ADDRESS	
43 LEPAGE COURT TORONTO, ON M3J 1Z9	54 Audia Court, Unit 2 Concord, ON L4K 3N5	

Title

Drains and Carriers

Description

Tag FFD Manufacturer Zurn Model Z-556
Tag HD Manufacturer Zurn Model Z-211-S
Tag FD Manufacturer Zurn Model Z-211-B
Tag PD Manufacturer Zurn Model Z187
Tag BWV Manufacturer Zurn Model Z1090
Tag CO Manufacturer Zurn Model Z1445
Tag FCO Manufacturer Zurn Model ZZN-1612
Tag WHA Manufacturer Zurn Model Z1700
Tag WC-1 BF Carrier Manufacturer Zurn Model Z1201-N_4
Tag L1/L2 Carrier Manufacturer Zurn Model Z1231
Tag L3 Carrier Manufacturer Zurn Model Z1221

Package Items

SPEC	SUBSECTION	ITEM	TYPE
M20 Specifications	M20	Specifications	Shop Drawings



Neshama Hospice
3 Cadillac Ave.

BP13838 - ZURN Drains SDP



PREPARED BY: CARDINAL SALES

**Z-556**

FFD

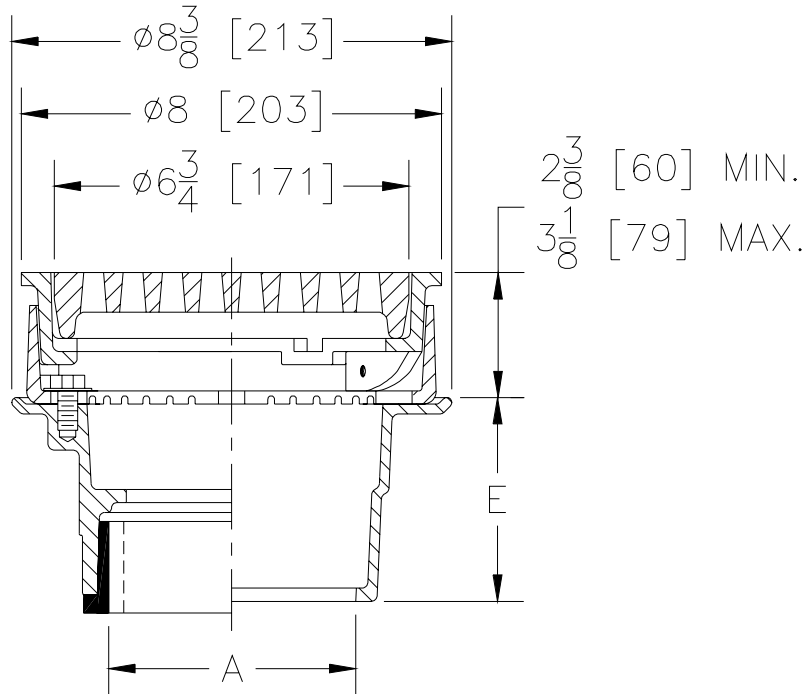
SPECIFICATION SHEET

8" [203mm]**ADJUSTABLE HEAVY-DUTY DRAIN**

TAG _____



Dimensional Data (inches and [mm]) are Subject to Manufacturing Tolerances and Change Without Notice



A Pipe Size Inches / [mm]	Approx. Wt. Lbs. / [kg]	Grate Open Area Sq. In. / [sq cm]
2-3-4-6 [51-76-102-152]	19 [9]	11 [71]

ENGINEERING SPECIFICATION: ZURN Z-556 8" [203mm] diameter heavy-duty floor drain, Dura-Coated cast iron bottom outlet body, seepage pan and combination membrane flashing clamp and frame for heavy-duty anti-tilt cast iron grate.

OPTIONS (Check/specify appropriate options)**PIPE SIZE**

2,3,4 [50,75,100]
2,3,4 [50,75,100]
2,3,4,6 [50,75,100,152]
2,3,4 [50,75,100]
2,3,4 [50,75,100]

(Specify size/type) **OUTLET**

_____ IC Inside Caulk
_____ IG Inside Gasket
_____ IP Threaded
_____ **NH No-Hub**
_____ NL Neo-Loc

E BODY HT. DIM.

3 7/8 [98]
3 7/8 [98]
2 5/8 [67]
3 7/8 [98]
4 5/8 [117]

PREFIXES

_____ **Z-** D.C.C.I. Body with Grate*
_____ **ZN-** **D.C.C.I. Body with Polished Nickel Bronze Top***

*Add 3/16" [5mm] to Min./Max. Dimension

SUFFIXES

_____ -AR Acid-Resisting Epoxy Coated Cast Iron
_____ -F0 3-1/2" x 9" [89 x 229] Funnel
_____ -FS Floating Slab
_____ -G Galvanized
_____ **-P 1/2" [13mm] Trap Primer Connection**

_____ -VP Vandal-Proof Secured Top
_____ -X Squeezin Backwater Valve
_____ **-Y Sediment Bucket**
_____ -6NH 6" [152mm] No-Hub Outlet (IP w/ Z-1040)
_____ -90 90° Threaded Side Outlet Body (IP or NH only)

*REGULARLY FURNISHED UNLESS OTHERWISE SPECIFIED

REV. A DATE: 2/14/00 C.N. NO. 84101**DWG. NO. 65047 PRODUCT NO. Z-556**

**Z-414-1**

FFD

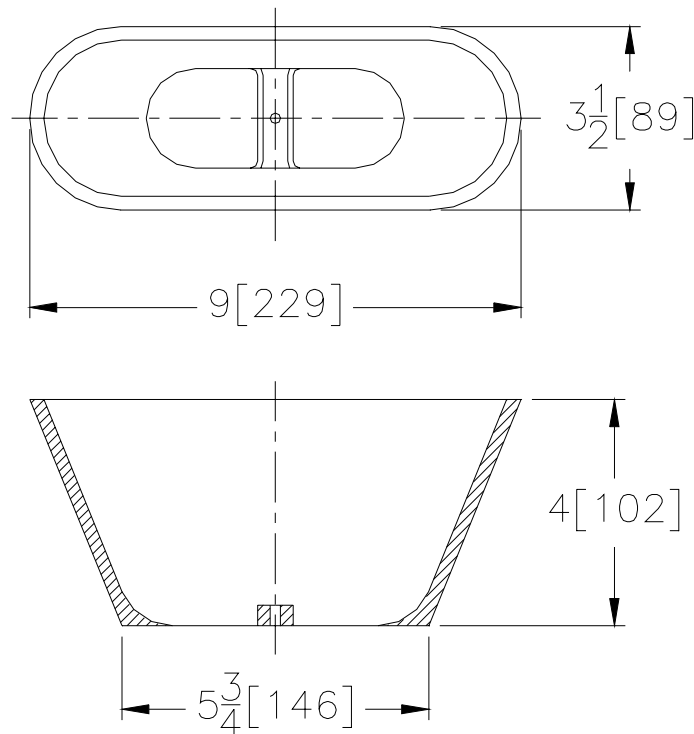
SPECIFICATION SHEET

3-1/2" [89] x 9" [229] OVAL FUNNEL

TAG _____



Dimensional Data (inches and [mm]) are Subject to Manufacturing Tolerances and Change Without Notice



Open Area Inches / [mm]	Approx. Weight Lbs. / [kg]
3-1/2 x 9 [89 x 229]	5 [2]

ENGINEERING SPECIFICATION: ZURN Z-414-1 3-1/2" [89] x 9" [229] Oval Funnel. 3-1/2" [89] x 9" [229] diameter funnel converting assembly, Dura-Coated cast iron (or nickel bronze), with necessary fasteners to secure funnel to strainer. (Available on 6" [152] diameter or larger size drain tops only.

OPTIONS (Check/specify appropriate options)**PREFIXES**

___ Z- Cast Iron Top
___ **ZN-** Polished Nickel Bronze Top

SUFFIXES

___ -G Galvanized

*REGULARLY FURNISHED UNLESS OTHERWISE SPECIFIED

REV. DATE: 10/15/99 C.N. NO. 83345

DWG. NO. 63633 PRODUCT NO. Z-414-1



Z-211-S HUB DRAIN

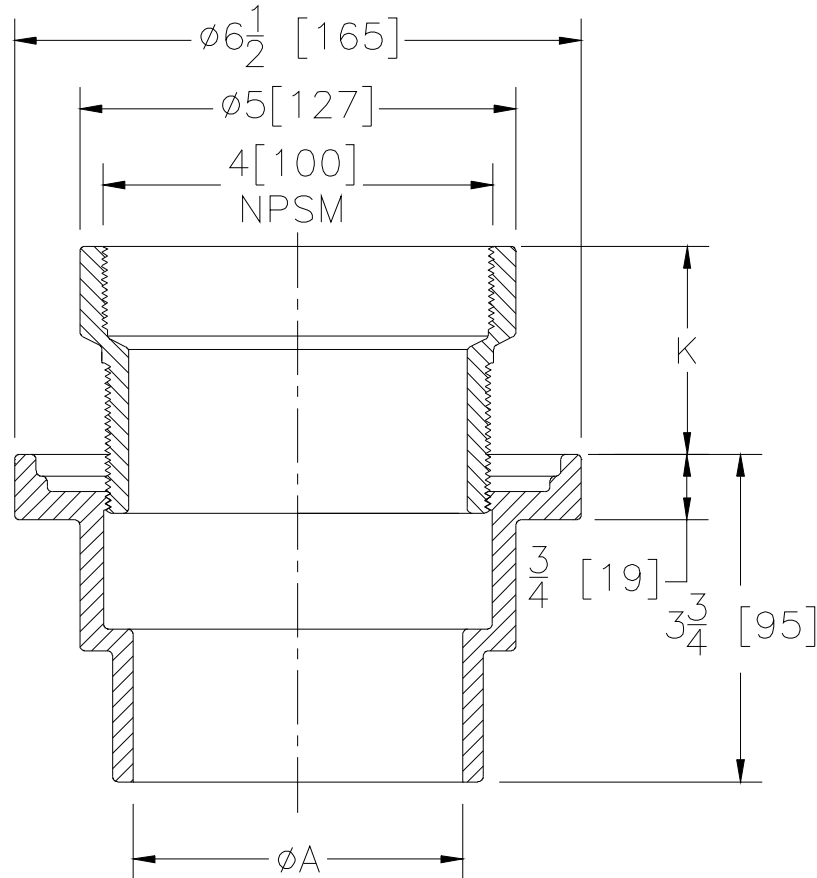
HD

SPECIFICATION SHEET

TAG _____



Dimensional Data (inches and [mm]) are Subject to Manufacturing Tolerances and Change Without Notice



A Pipe Size Inches / [mm]	Body Height Inches / [mm]	Approx. Wt. Lbs. / [kg]
2 - 3 - 4 [51 - 76 - 102]	3-3/4 [95]	4 [2]

ENGINEERING SPECIFICATION: ZURN Z-211-S Hub Drain, Dura-Coated cast iron body with bottom outlet.**OPTIONS** (Check/specify appropriate options)**PIPE SIZE**

2,3,4 [50,75,100]

(Specify size/type) **OUTLET**_____ **NH** **No-Hub****E BODY HT. DIM.****3 3/4 [95]****PREFIXES**_____ **ZN-** **Polished Nickel Bronze Top****SUFFIXES**

_____ **-G** Galvanized Cast Iron
_____ **-P** **1/2" [13mm] Trap Primer Connection**
_____ **-X** Squeezin Backwater Valve
_____ **-Y** Sediment Bucket
_____ **-210** 8" [203mm] Wide Flange Body

REV. B **DATE: 06/23/10** **C.N. NO. 89874****DWG. NO. 63869** **PRODUCT NO. Z-211-S**

*REGULARLY FURNISHED UNLESS OTHERWISE SPECIFIED



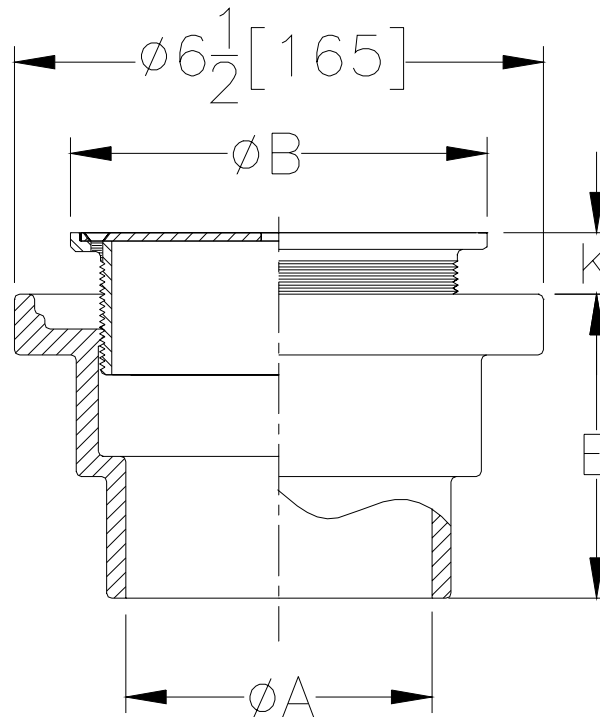
ZN-211-B ← **FD**
BODY ASSEMBLY
WITH "TYPE B" STRAINER

SPECIFICATION SHEET

TAG _____



Dimensional Data (inches and [mm]) are Subject to Manufacturing Tolerances and Change Without Notice



Str. Desig.	Dimensions In Inches / [mm]				Approx. Wt. Lbs. / [kg]	Strainer Open Area Sq. In. / [sq cm]
	A Pipe Size	B Str. Dia.	K			
			Min.	Max.		
-B5	2 - 3 - 4 [51 - 76 - 102]	5 [127]	1/4 [6]	1-1/4 [32]	7 [3]	8 [52]
-B6	2 - 3 - 4 [51 - 76 - 102]	6 [152]	1/4 [6]	1-1/4 [32]	7 [3]	9 [58]
-B7	2 - 3 - 4 [51 - 76 - 102]	7 [178]	1/4 [6]	1-1/4 [32]	8 [4]	12 [77]
-B8	2 - 3 - 4 [51 - 76 - 102]	8 [203]	1/4 [6]	1-1/4 [32]	9 [4]	18 [116]

ENGINEERING SPECIFICATION: ZURN ZN-211-B Floor and Shower Drain, Dura-Coated cast iron body with bottom outlet, adjustable "Type B" polished nickel bronze round strainer.

OPTIONS (Check/specify appropriate options)

PIPE SIZE

2,3,4 [50,75,100]

(Specify size/type) **OUTLET**

_____ **NH** **No-Hub**

E BODY HT. DIM.

3 3/4 [95]

SUFFIXES

_____	-G	Galvanized Cast Iron
_____	-P	1/2" [13] Trap Primer Connection
_____	-VP	Vandal-Proof Secured Top
_____	-X	Squeezin Backwater Valve
_____	-Y	Sediment Bucket
_____	-210	8" [203] Wide Flange Body
_____	-210-WD	8" [203] Wood Deck Drain

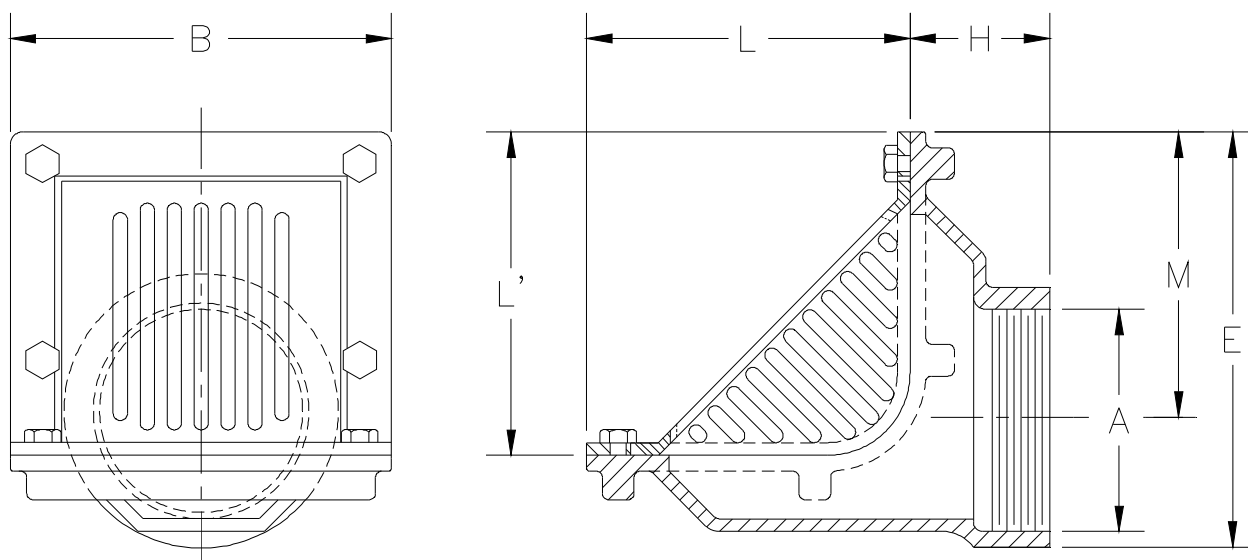
*REGULARLY FURNISHED UNLESS OTHERWISE SPECIFIED

REV. _____ **DATE:** 11/15/99 **C.N. NO.** 83322

DWG. NO. 63610 **PRODUCT NO.** ZN-211-B

**Z187** ← **PD****6-3/8 X 7-1/2 [162 X 191] OR 8-3/8 X 12-1/2 [213 X 318]**
OBLIQUE SCUPPER DRAIN**SPECIFICATION SHEET****TAG** _____

Dimensional Data (inches and [mm]) are Subject to Manufacturing Tolerances and Change Without Notice



A-Pipe Size In [mm]	Dimensions In Inches [mm]					Approx. Wt. Lbs. [kg]	Grate Open Area Sq. In. [cm ²]
	B	H	L	L'	M		
2 [51]					6-11/16 [170]	22 [10]	
3 [76]	7-1/2 [191]	2-3/4 [70]	6-3/8 [162]	6-3/8 [162]	6-5/32 [156]	20 [9]	31 [200]
4 [102]					5-5/8 [143]	20 [9]	
6 [152]	12-1/2 [318]	3-1/2 [89]	8-3/8 [213]	8-3/8 [213]	7-3/8 [200]	32 [15]	72 [465]
8 [203]	12-1/2 [318]	3-1/2 [89]	8-3/8 [213]	8-3/8 [213]	6-3/8 [187]	33 [15]	72 [465]

ENGINEERING SPECIFICATION: ZURN Z187

6-3/8" x 7-1/2" [162 mm x 191 mm] or 8-3/8" x 12-1/2" [213 mm x 318 mm] Scupper drain, Dura-Coated cast iron body with reversible back or bottom outlet, oblique aluminum grate with 90° combination frame and membrane flashing clamp.

OPTIONS (Check/specify appropriate options)**PIPE SIZE**

2, 3, 4 [51, 76, 102]
6, 8 [152, 203]

(Specify size/type) **OUTLET**

____ IP Threaded
____ IP Threaded

'E' BODY HT. DIM.

8-3/16 [208]
11 [279]

PREFIXES

____ **Z** D.C.C.I. Body with Grate*
____ **ZN** D.C.C.I. Body with Polished Nickel Bronze Grate

SUFFIXES

____ **-BS** Bronze Mesh Screen Over Grate
____ **-FG** Flush Grate
____ **-G** Galvanized Cast Iron
____ **-VP** Vandal Proof Secured Top

* Regularly furnished unless otherwise specified.

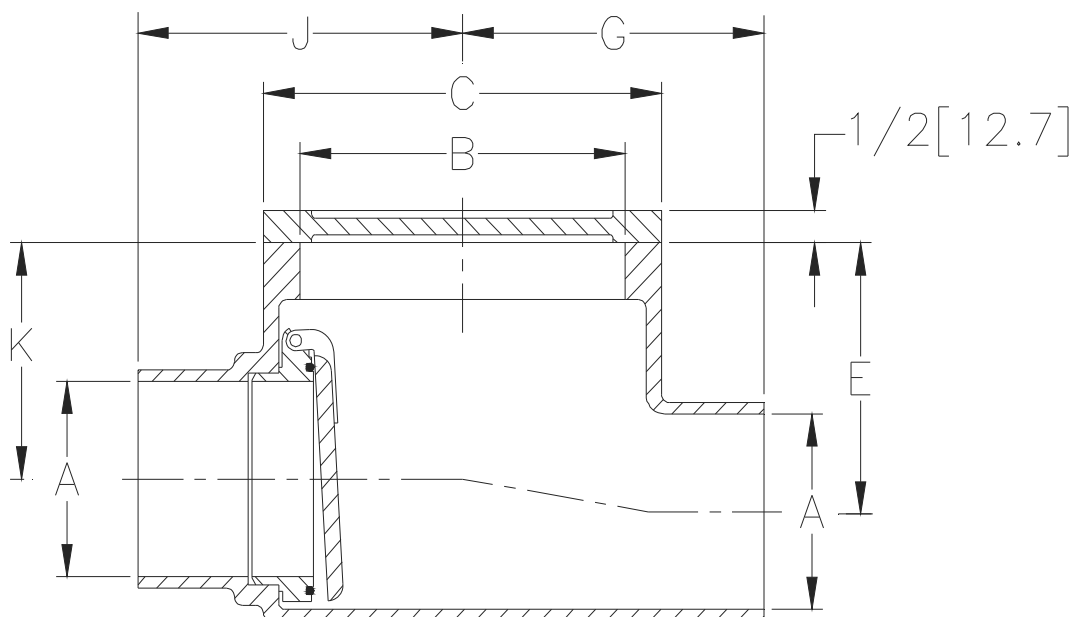


Z1090 ← **BWV**
BACKWATER VALVE, FLAPPER TYPE

SPECIFICATION SHEET

TAG _____

Dimensional Data (inches and [mm]) are Subject to Manufacturing Tolerances and Change Without Notice



Dimensions In Inches [mm]							Approx. Wt. Lbs. Kg.
A Pipe Size	B	C	E	G	J	K	
2 [51]	5-1/4 [133]	6-1/2 [165]	4-5/8 [117]	4-7/8 [124]	5-1/4 [133]	3-5/8 [92]	16 [7]
3 [76]			4-1/8 [105]				17 [8]
4 [102]	6-3/8 [162]	7-1/2 [190]	4-3/4 [121]	6 [152]	6 [152]	4-1/4 [108]	22 [10]
6 [162]	8-1/4 [210]	9-1/2 [241]	7-1/2 [191]	6-5/8 [168]	7-7/16 [189]	6 [152]	34 [15]

*Inlet sizes up to 4" [102] utilize a flapper that hangs normally closed. Sizes greater than 4" [102] utilize a bronze flapper that hangs 1/4" [6] normally open.

ENGINEERING SPECIFICATION: ZURN Z1090

Backwater Valve, Dura-Coated cast iron body with No-Hub inlet and outlet, gasketed bolted cover, automatic PVC (3" [76mm] and 4" [102mm] sizes only) flapper type backwater valve with O-ring.

CONNECTIONS (Check/specify appropriate options)

PIPE SIZE

2,3,4,6 [51,76,102, 152]

(Specify size) **CONNECTION**

____ **NH** **No-Hub**

PREFIXES

____ **Z** **D.C.C.I. Body***

SUFFIXES

____ **-BP** **Bronze Threaded Plug Cover**
____ **-BV** **Bronze Flapper Valve (3 and 4 [76 and 102] Size)**
____ **-G** **Galvanized Cast Iron**

SG:
PROVIDE FLOOR
DOOR FOR
ACCESS.

* Regularly furnished unless otherwise specified.



Z1445

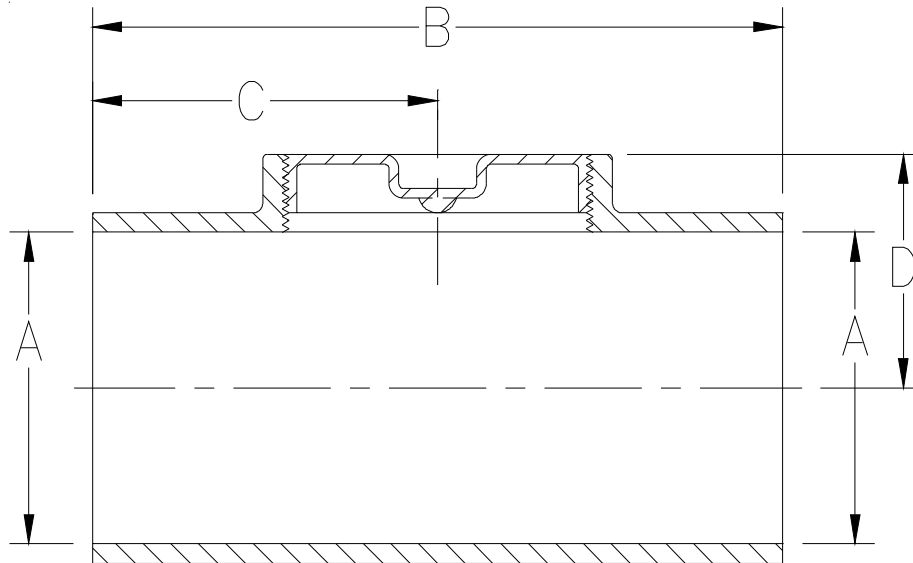
CLEANOUT TEE

CO

SPECIFICATION SHEET

TAG _____

Dimensional Data (inches and [mm]) are Subject to Manufacturing Tolerances and Change Without Notice



Dimensions in In [mm]				Approx. Wt. Lbs. [kg]
A- Pipe Size	NH			
	B	C	D	
2 [51]	6-3/8 [162]	3-3/16 [81]	1-3/4 [44]	8 [4]
3 [76]	7-3/4 [197]	3-7/8 [98]	2-1/2 [64]	15 [7]
4 [102]	8-7/8 [225]	4-7/16 [113]	3 [76]	16 [7]
6 [152]	12-1/2[318]	6-1/4 [159]	4-5/16 [110]	35 [16]
8 [203]	17 [432]	8-1/2 [216]	6-3/8 [162]	49 [22]

ENGINEERING SPECIFICATION: ZURN Z1445
Cleanout Tee. Dura-Coated cast iron body with gas and watertight ABS tapered thread plug.

OPTIONS (Check/specify appropriate options)

PIPE SIZE

2,3,4,6,8 [51,76,102,152,203]

(Specify size/type) **OUTLET**

_____ **NH** **No-Hub**

PREFIXES

_____ **Z** **Dura-Coated Cast Iron***

SUFFIXES

_____ **-BP** **Bronze Plug**
_____ **-G** **Galvanized Cast Iron**

* Regularly furnished unless otherwise specified.

Zurn Industries, LLC | Specification Drainage Operation
1801 Pittsburgh Avenue, Erie, PA U.S.A. 16502 · Ph. 855-663-9876, Fax 814-454-7929
In Canada | **Zurn Industries Limited**
3544 Nashua Drive, Mississauga, Ontario L4V 1L2 · Ph. 905-405-8272, Fax 905-405-1292
www.zurn.com

Rev. E
Date: 09/28/2017
C.N. No. 138042
Prod. | Dwg. No. Z1445



ZXN-1612 **ADJUSTABLE ROUND HEAVY-DUTY**
NICKEL BRONZE CLEANOUT

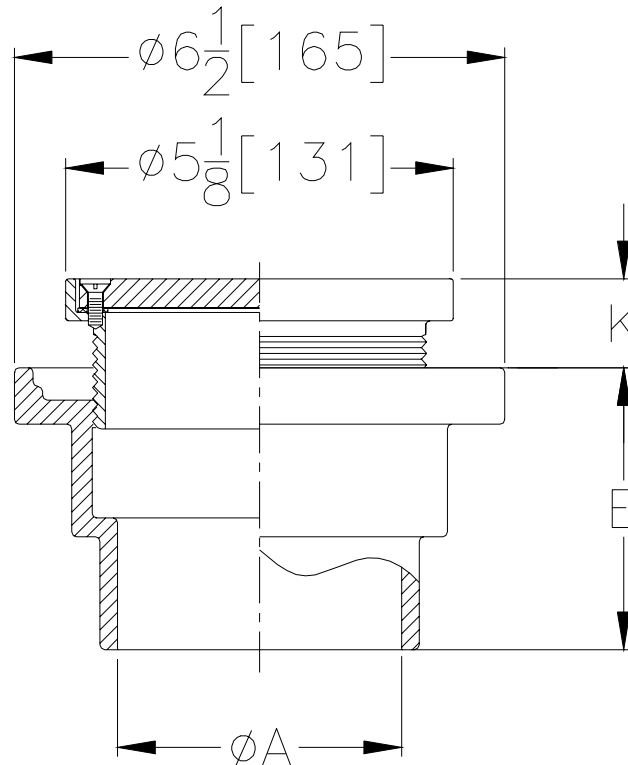
FCO

SPECIFICATION SHEET

TAG _____



Dimensional Data (inches and [mm]) are Subject to Manufacturing Tolerances and Change Without Notice



Pipe Size Inches / [mm]	Approx. Wt. Lbs. / [kg]	K	
		Min.	Max.
2-3-4 [51-76-102]	8 [4]	1/2 [13]	1-3/8 [35]

ENGINEERING SPECIFICATION: ZURN ZXN-1612 Adjustable Floor Cleanout, Dura-Coated cast iron body with neoprene body sleeve, polished nickel bronze adjustable head and gasketed, secured, scoriated heavy-duty cover with stainless steel screws.

OPTIONS (Check/specify appropriate options)

PIPE SIZE

2,3,4 [51,76,102]

(Specify size/type) **OUTLET**

_____ **NH** **No-Hub**

E BODY HT. DIM.

3-3/4" [95mm]

PREFIXES

_____ **ZX-** Heavy-Duty Cast Iron Top

SUFFIXES

_____ -CM Carpet Marker
_____ -G Galvanized
_____ -SP Seal Plug
_____ -VP Vandal-Proof Screws
_____ -1600 Wide Flange Body

REV. A **DATE: 06/16/05** **C.N. NO. 89834**

DWG. NO. 63650 **PRODUCT NO. ZXN-1612**

*REGULARLY FURNISHED UNLESS OTHERWISE SPECIFIED



Z1700 ← WHA

SHOKTROL WATER HAMMER ARRESTORS

SPECIFICATION SHEET

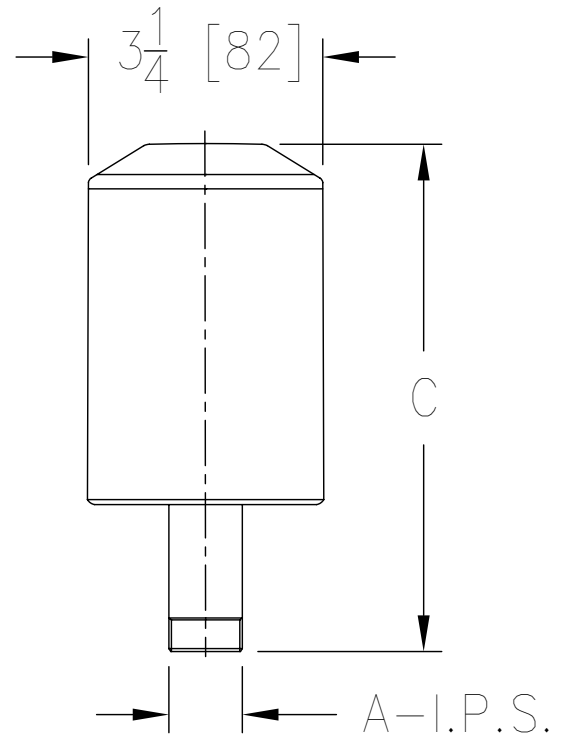
TAG _____

Design and Dimensional Data (inches and [mm]) are Subject to Manufacturing Tolerances and Change Without Notice

Size	'A' In. [mm]	'C' In. [mm]	Approx. Wt. Lbs. [kg]	Fixture Unit Capacity
100	3/4 [19]	3-1/4 [82]	15/16 [.425]	1-11
200	1 [25]	4-1/16 [103]	1-5/32 [.525]	12-32
300	1 [25]	4-3/8 [111]	1-5/16 [.6]	33-60
400	1 [25]	5-1/4 [133]	1-9/16 [.7]	61-113
500	1 [25]	7-1/32 [178]	2-3/16 [1.0]	114-154
600	1 [25]	7-1/32 [178]	2-3/16 [1.0]	155-330

Pressure and Temperature Requirements:

Maximum Working Pressure: 125 psi [862 Kpa]
Maximum Static Pressure: 250 psi [1724 Kpa]
Operating Temperature Range: 33°F to 300 °F [1°C to 149°C]

**ENGINEERING SPECIFICATION: ZURN Z1700**

Shoktrol Water Hammer Arrestors are regularly furnished in all stainless steel construction. Pipe threads are accurately machined to assure tight connection. 3/4" [19mm] male I.P.S. inlet is standard for the 100 size units, while 1" [25mm] male I.P.S. inlet is standard for sizes 200 thru 600.

All sizes of Zurn Z1700 Shoktrol Water Hammer Arrestors comply with the following specifications:

PDI WH-201
ASSE 1010

Where required in piping systems, properly sized water hammer arrestors shall be ZURN Z1700 (specify size) with nesting type bellows contained within a casing having sufficient displacement volume to dissipate the calculated kinetic energy generated, in the piping system. Both casing and bellows constructed of Type 304 stainless steel.

* Regularly furnished unless otherwise specified

⚠ WARNING: Cancer and Reproductive Harm - www.P65Warnings.ca.gov

⚠ ADVERTENCIA: Cáncer y daño reproductivo - www.P65Warnings.ca.gov

⚠ AVERTISSEMENT: Cancer et effets néfastes sur la reproduction - www.P65Warnings.ca.gov

Zurn Industries, LLC | Specification Drainage Operation
1801 Pittsburgh Avenue, Erie, PA 16502, Ph. 855.663.9876

In Canada | Zurn Industries Limited
7900 Goreway Drive, Unit 10, Brampton, Ontario L6T 5W6, Ph. 877.892.5216

www.zurn.com

Rev. F
Date: 03/08/2023
C.N. No. 145154
Patent: Zurn.com/patents
Prod. | Dwg. No. Z1700

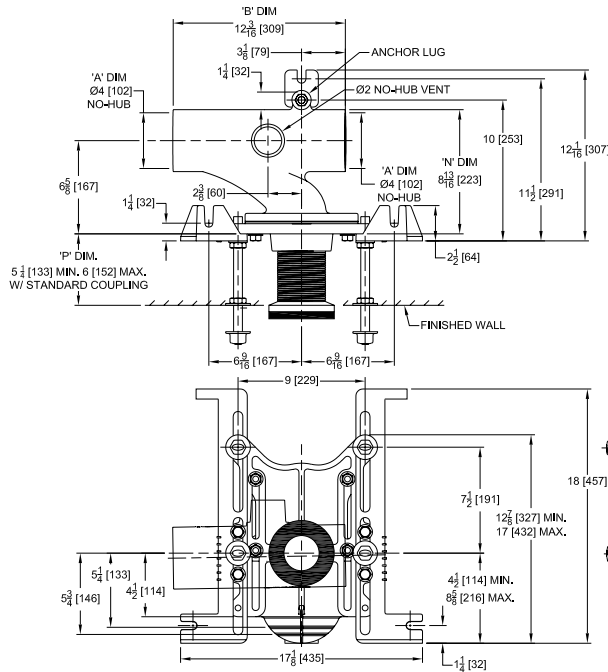


Z1201-N_4 ← **WC-1 BF**
EZCARRY® ADJUSTABLE HORIZONTAL HIGH PERFORMANCE
SIPHON JET NO-HUB WATER CLOSET CARRIER SYSTEM

SPECIFICATION SHEET

TAG _____

Design and Dimensional Data (inches and [mm]) are Subject to Manufacturing Tolerances and Change Without Notice



Product Number	Approx. Wt lbs [kg]
Z1201-NL4	58 [26]
Z1201-NR4	

Note:

1. Z coupling, Min. 'P' Dim Obtainable=2 [51]. EZ-Set™ Coupling, Min. 'P' Dim. Obtainable=4-1/4 [108] or 2-1/16 [52] for 12 [305] NPT.
2. Feet bolted to floor using min. 1/2 [13] dia. anchors.
3. Rear anchor foot required for secure installation.

Z1201-NR4 Illustrated

ENGINEERING SPECIFICATION: ZURN Z1201-N_4

EZCarry® horizontal siphon jet water closet carrier system with high performance waterway and 4" [102mm] no-hub connections. System includes Dura-Coated cast iron main fitting with hydro-mechanically optimized sweep and extended 2" [51mm] vent, adjustable faceplate, QuickFit™ faceplate gasket, floor mounted pre-fab slotted foot supports with top anchoring pre-fab support base, heavy-duty 1/2" [13mm] rear anchor tie down, fixture bolts, trim, stud protectors, bonded "Neo-Seal" gasket, and corrosion resistant, adjustable 3" [76mm] dia. X 6" [152mm] coupling with integral test cap designed to increase flow velocity and line carry. EZCarry® system complies with the requirements of ASME A112.6.1M up to a 500 lbs [227 kg] static load rating.

OPTIONS (Check/specify appropriate options)

___ **Z1201-NL4** 4 [102] No-Hub Left Hand Inlet with Flow to Right
___ **Z1201-NR4** 4 [102] No-Hub Right Hand Inlet with Flow to Left

PREFIXES

___ **Z** D.C.C.I. System with Zurn ZZ Adjustable Coupling*
___ **ZQ** D.C.C.I. System with NPT Faceplate, Non-Adjustable Coupling

SUFFIXES

___ -A Auxiliary Support Assembly (For 'P' Dim. Greater than 18 [457])	___ -G Galvanized Cast Iron
___ -CC Corrosion Resistant Cast Iron Coupling (2-1/4 [57] to 12 [305])	___ -JC 2 [51] Auxiliary Inlet with 1/8 Bend
___ -CE EZ-Set™ Coupling (NPSM 6 [152], 12 [305] or custom) (NPT 12 [305] or custom)	___ -M Auxiliary Foot Support (for 'P' Dim. 7 thru 18 [178 thru 457])
___ -CL Custom Length Standard Coupling with Integral Test Cap (Specify Length 4, 8, 10, 12 [102, 203, 254, 305])	___ -RYK17 One Piece Unistrut Pre-Fab Foot
___ -CS 2-1/4 [57] Polymer Coupling with Integral Test Cap	___ -VP Vandal-Proof Trim
___ -F Floor Mounted, Back Outlet Fixture Support	___ -X2 2 [51] Carrier Foot Extension Assembly
	___ -X3 3 [76] Carrier Foot Extension Assembly
	___ -45 Finishing Frame for Siphon Jet System
	___ -50 Flush Valve Supply Support for Water Closets

* Regularly furnished unless otherwise specified.

⚠ **WARNING:** Cancer and Reproductive Harm - www.P65Warnings.ca.gov

⚠ **ADVERTENCIA:** Cáncer y daño reproductivo - www.P65Warnings.ca.gov

⚠ **AVERTISSEMENT:** Cancer et effets néfastes sur la reproduction - www.P65Warnings.ca.gov

Zurn Industries, LLC | Specification Drainage Operation
1801 Pittsburgh Avenue, Erie, PA USA 16502, Ph. 855.663.9876

In Canada | Zurn Industries Limited
7900 Goreway Drive, Unit 10, Brampton, Ontario L6T 5W6, Ph. 877.892.5216

www.zurn.com

Rev. N
Date: 06/12/24
C.N. No. 146025
Patent zurn.com/patents
Prod. | Dwg. No. Z1201-N_4

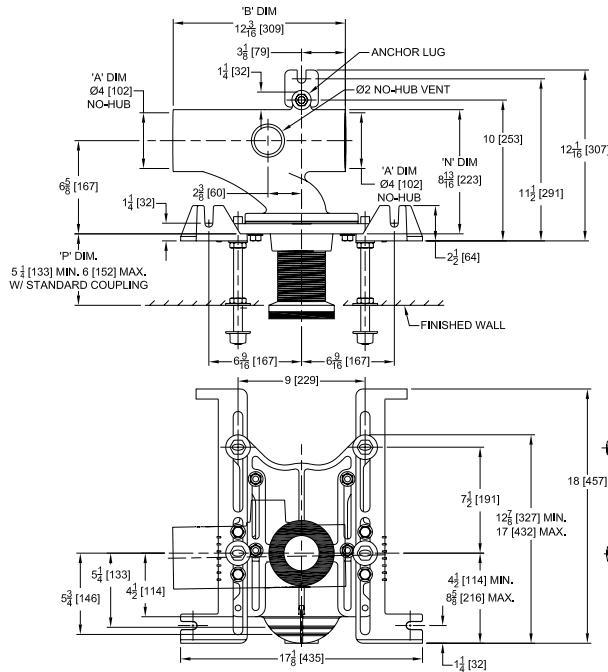
Page 1 of 1

**Z1201-N_4****WC-1 BF****EZCARRY® ADJUSTABLE HORIZONTAL HIGH PERFORMANCE
SIPHON JET NO-HUB WATER CLOSET CARRIER SYSTEM**

SPECIFICATION SHEET

TAG _____

Design and Dimensional Data (inches and [mm]) are Subject to Manufacturing Tolerances and Change Without Notice



Product Number	Approx. Wt lbs [kg]
Z1201-NL4	58 [26]
Z1201-NR4	

Note:

1. Z coupling, Min. 'P' Dim Obtainable=2 [51]. EZ-Set™ Coupling, Min. 'P' Dim. Obtainable=4-1/4 [108] or 2-1/16 [52] for 12 [305] NPT.
2. Feet bolted to floor using min. 1/2 [13] dia. anchors.
3. Rear anchor foot required for secure installation.

Z1201-NR4 Illustrated**ENGINEERING SPECIFICATION: ZURN Z1201-N_4**

EZCarry® horizontal siphon jet water closet carrier system with high performance waterway and 4" [102mm] no-hub connections. System includes Dura-Coated cast iron main fitting with hydro-mechanically optimized sweep and extended 2" [51mm] vent, adjustable faceplate, QuickFit™ faceplate gasket, floor mounted pre-fab slotted foot supports with top anchoring pre-fab support base, heavy-duty 1/2" [13mm] rear anchor tie down, fixture bolts, trim, stud protectors, bonded "Neo-Seal" gasket, and corrosion resistant, adjustable 3" [76mm] dia. X 6" [152mm] coupling with integral test cap designed to increase flow velocity and line carry. EZCarry® system complies with the requirements of ASME A112.6.1M up to a 500 lbs [227 kg] static load rating.

OPTIONS (Check/specify appropriate options)

- ____ Z1201-NL4 4 [102] No-Hub Left Hand Inlet with Flow to Right
____ Z1201-NR4 4 [102] No-Hub Right Hand Inlet with Flow to Left

PREFIXES

- ____ Z D.C.C.I. System with Zurn ZZ Adjustable Coupling*
____ ZQ D.C.C.I. System with NPT Faceplate, Non-Adjustable Coupling

SUFFIXES

- | | |
|--|--|
| ____ -A Auxiliary Support Assembly
(For 'P' Dim. Greater than 18 [457]) | ____ -G Galvanized Cast Iron |
| ____ -CC Corrosion Resistant Cast Iron Coupling
(2-1/4 [57] to 12 [305]) | ____ -JC 2 [51] Auxiliary Inlet with 1/8 Bend |
| ____ -CE EZ-Set™ Coupling (NPSM 6 [152], 12 [305] or custom)
(NPT 12 [305] or custom) | ____ -M Auxiliary Foot Support
(for 'P' Dim. 7 thru 18 [178 thru 457]) |
| ____ -CL Custom Length Standard Coupling with Integral Test Cap
(Specify Length 4, 8, 10, 12 [102, 203, 254, 305]) | ____ -RYK17 One Piece Unistrut Pre-Fab Foot |
| ____ -CS 2-1/4 [57] Polymer Coupling with Integral Test Cap | ____ -VP Vandal-Proof Trim |
| ____ -F Floor Mounted, Back Outlet Fixture Support | ____ -X2 2 [51] Carrier Foot Extension Assembly |
| | ____ -X3 3 [76] Carrier Foot Extension Assembly |
| | ____ -45 Finishing Frame for Siphon Jet System |
| | ____ -50 Flush Valve Supply Support for Water Closets |

* Regularly furnished unless otherwise specified.

⚠ **WARNING:** Cancer and Reproductive Harm - www.P65Warnings.ca.gov⚠ **ADVERTENCIA:** Cáncer y daño reproductivo - www.P65Warnings.ca.gov⚠ **AVERTISSEMENT:** Cancer et effets néfastes sur la reproduction - www.P65Warnings.ca.gov

Zurn Industries, LLC | Specification Drainage Operation
1801 Pittsburgh Avenue, Erie, PA USA 16502, Ph. 855.663.9876

In Canada | Zurn Industries Limited
7900 Goreway Drive, Unit 10, Brampton, Ontario L6T 5W6, Ph. 877.892.5216

www.zurn.com

Rev. N
Date: 06/12/24
C.N. No. 146025
Patent zurn.com/patents
Prod. | Dwg. No. Z1201-N_4

Page 1 of 1

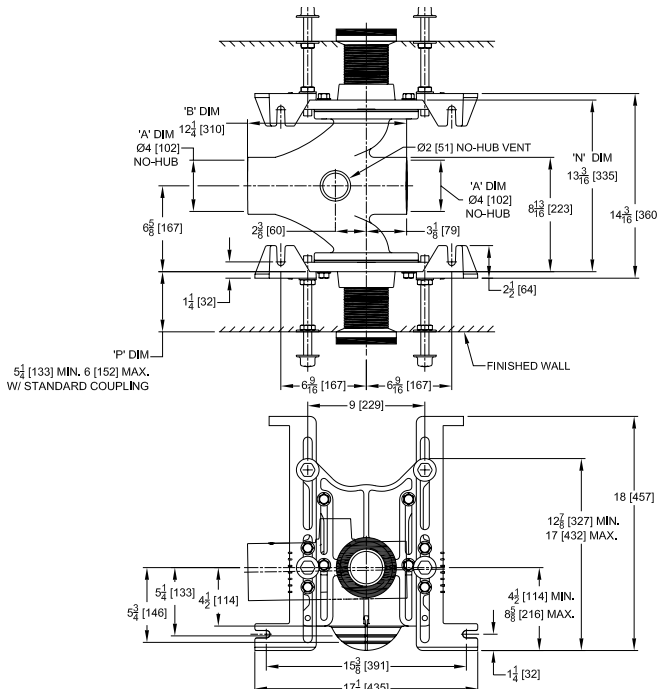


Z1201-ND4 WC-1 BF
EZCARRY® ADJUSTABLE HORIZONTAL HIGH PERFORMANCE
BACK-TO-BACK SIPHON JET NO-HUB WATER CLOSET CARRIER
SYSTEM

SPECIFICATION SHEET

TAG _____

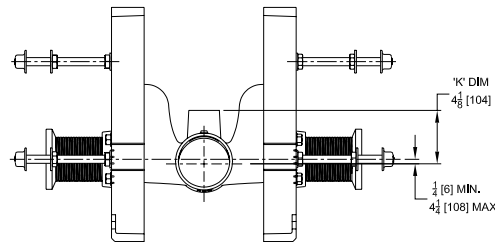
Design and Dimensional Data (inches and [mm]) are Subject to Manufacturing Tolerances and Change Without Notice



Product Number	Approx. Wt. lbs [kg]
Z1201-ND4	104 [47]

Note:

1. Z coupling, Min. 'P' Dim. Obtainable=2 [51].EZ-Set™ Coupling, Min. 'P' Dim. Obtainable=4-1/4 [108] or 2-1/16 [52] for 12 [305] NPT.
2. Feet bolted to floor using min. 1/2 [13] dia. anchors.



Z1201-ND4 Illustrated

ENGINEERING SPECIFICATION: ZURN Z1201-ND4

EZCarry® horizontal siphon jet water closet carrier system with high performance waterway and 4" [102mm] no-hub connections. System includes Dura-Coated cast iron double main fitting with hydro-mechanically optimized sweep and extended 2" [51mm] vent, adjustable faceplates, QuickFit™ faceplate gaskets, floor mounted pre-fab slotted foot supports with top anchoring pre-fab support base, fixture bolts, trim, stud protectors, bonded "Neo-Seal" gaskets, and corrosion resistant, adjustable 3" [76mm] dia. X 6" [152mm] couplings with integral test caps designed to increase flow velocity and line carry. EZCarry® system complies with the requirements of ASME A112.6.1M up to a 500 lbs [227 kg] static load rating.

OPTIONS (Check/specify appropriate options)

___ **Z1201-ND4** 4 [102] Hub Back-to-Back Inlet (Double)

PREFIXES

___ **Z** D.C.C.I. System with Zurn ZZ Adjustable Coupling*
___ **ZQ** D.C.C.I. System with NPT Faceplate, Non-Adjustable Coupling

SUFFIXES

___ -A Auxiliary Support Assembly (For 'P' Dim. Greater than 18 [457])	___ -G Galvanized Cast Iron
___ -CC Corrosion Resistant Cast Iron Coupling (2-1/4 [57] to 12 [305])	___ -M Auxiliary Foot Support (for 'P' Dim. 7 thru 18 [178 thru 457])
___ -CE EZ-Set™ Coupling (NPSM 6 [152] , 12 [305] or custom) (NPT 12 [305] or custom)	___ -RYK17 One Piece Unistrut Pre-Fab Foot Support
___ -CL Custom Length Standard Coupling with Integral Test Cap (Specify Length 4, 8, 10, 12 [102, 203, 254, 305])	___ -VP Vandal-Proof Trim
___ -CS 2-1/4 [57] Polymer Coupling with Integral Test Cap	___ -X2 2 [51] Carrier Foot Extension Assembly
___ -F Floor Mounted, Back Outlet Fixture Support	___ -X3 3 [76] Carrier Foot Extension Assembly
	___ -45 Finishing Frame for Siphon Jet System
	___ -50 Flush Valve Supply Support for Water Closets

* Regularly furnished unless otherwise specified.

⚠ WARNING: Cancer and Reproductive Harm - www.P65Warnings.ca.gov

⚠ ADVERTENCIA: Cáncer y daño reproductivo - www.P65Warnings.ca.gov

⚠ AVERTISSEMENT: Cancer et effets néfastes sur la reproduction - www.P65Warnings.ca.gov

Zurn Industries, LLC | Specification Drainage Operation
1801 Pittsburgh Avenue, Erie, PA 16502, Ph. 855.663.9876

In Canada | Zurn Industries Limited
7900 Goreway Drive, Unit 10, Brampton, Ontario L6T 5W6, Ph. 877.892.5216

www.zurn.com

Rev. P
Date: 06/04/2024
C.N. No. 146025
Patent zurn.com/patents
Prod. | Dwg. No. Z1201-ND4

Page 1 of 1



Z1231 RIGID SYSTEM FOR < L-1 / L-2

AMERICAN STANDARD CO. LAVATORIES W/ SHROUD

DIMENSIONAL DATA (INCHES [MM]) SUBJECT TO MANUFACTURING TOLERANCES AND CHANGES WITHOUT NOTICE

AMERICAN STANDARD CO. REFERENCE			ZURN REFERENCE							
NAME	CATALOG NO.	SIZE	A	B	C	D	E	F	G	H
MURRO	0954.000, 0954.023, 0954.021, 0958.000, 0955.000, 0955.023, 0955.021	22 X 21 $\frac{1}{4}$ [559 X 540]	16 $\frac{3}{4}$ [425]	32 $\frac{1}{4}$ [819]	34 [864]	4 [102]	6 [152]	4 [102]	14 $\frac{5}{8}$ [371]	36 [914]

UPRIGHTS:
(2) 36-UPRIGHT

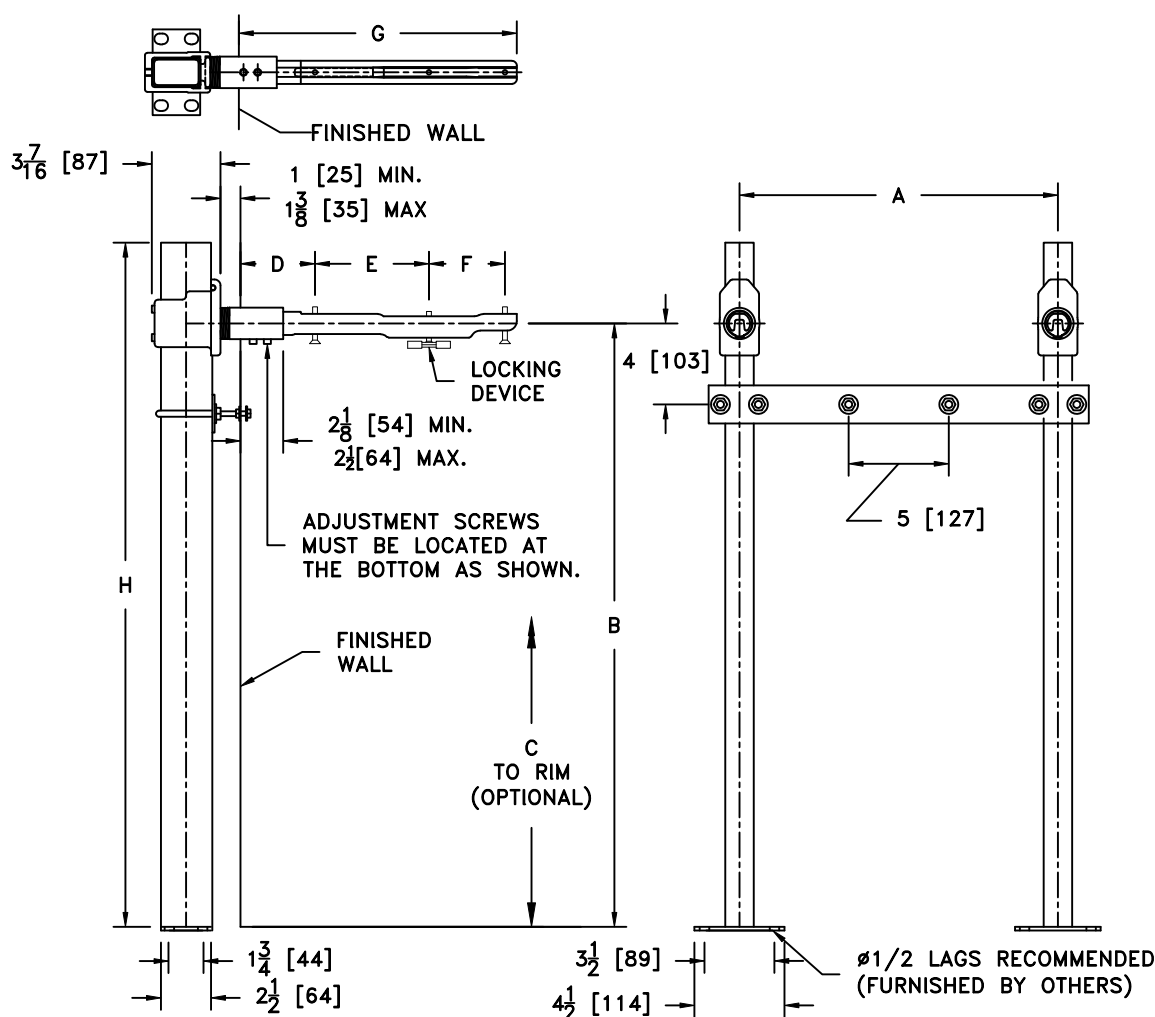
P.N.
56289-027

COMPONENTS:
(2) UNIVERSAL LAV ARM
(1) HANGER PLATE

P.N.
02008-091
57138-010

HARDWARE:
(1) Z1200-UBOLT-BAG-2
(1) Z1200-1/4-STUD-BAG-2

P.N.
66955-351
66955-352



*WITH STANDARD STUD LENGTH OF 6 [152]
-SL (SPECIFY WALL THICKNESS FOR LONGER STUDS)

ENGINEERING SPECIFICATION:

AS SHOWN; "DURA-COATED" STEEL STANCHIONS WITH WELDED FEET, STEEL SLEEVES, VALVE SUPPORT PLATE, CAST IRON HEADERS AND ARMS, AND MOUNTING BOLTS AND TRIM.

DATE: 8/22/18

REV. E

C.N. NO. 140484

PRODUCT NUMBER

Z1231

DRAWING NUMBER

84064

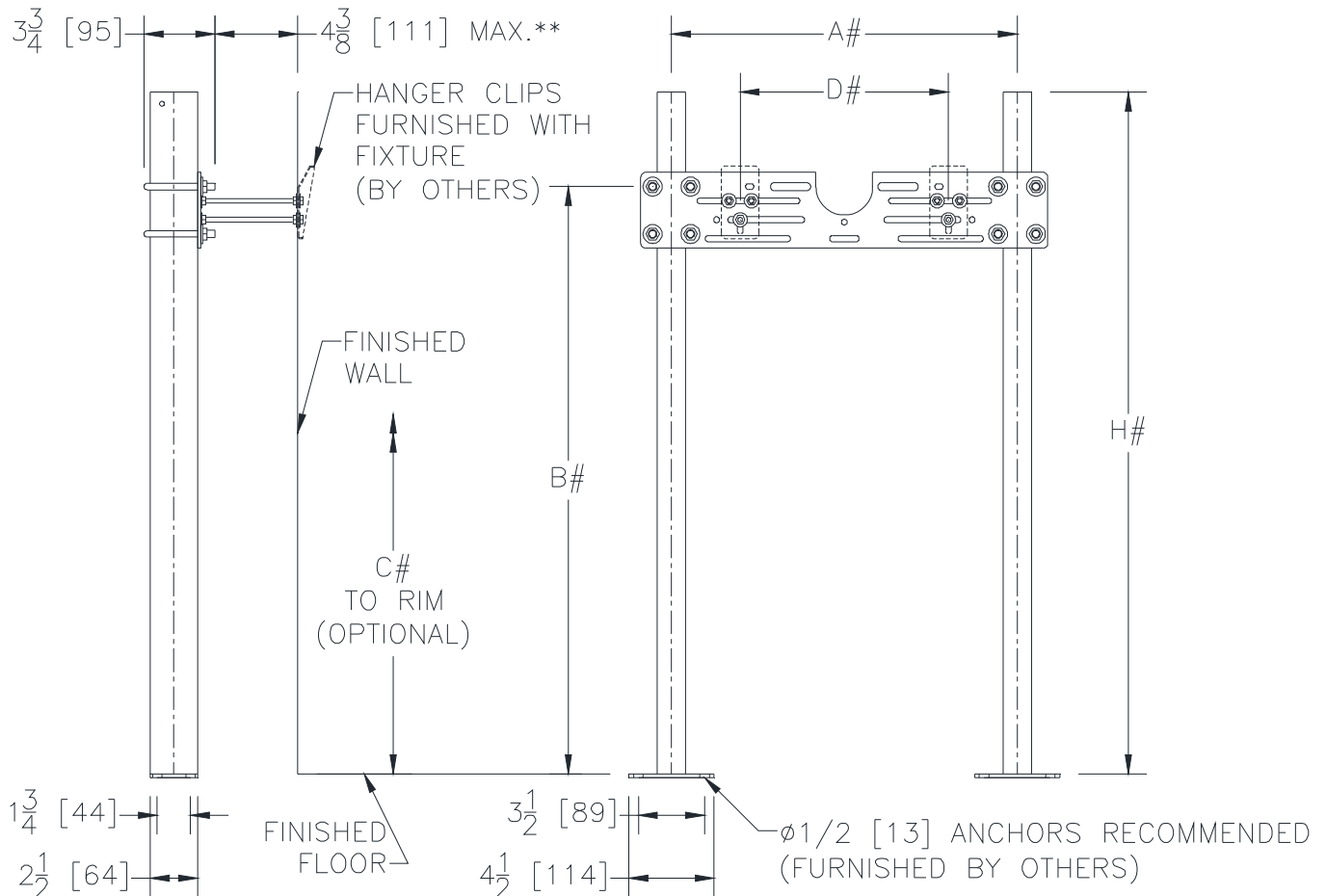


Z1221 ← **L-3**
PLATE TYPE SYSTEM
WALL URINALS

SPECIFICATION SHEET

TAG _____

Dimensional Data (inches and [mm]) are Subject to Manufacturing Tolerances and Change Without Notice



** WITH STANDARD STUD LENGTH OF 6 [152]

REFER TO ROUGH-IN GUIDE OF SPECIFIC FIXTURE FOR DIMENSIONS

Product No.	Approx. Wt. Lbs. [kg]
Z1221	28 [13]

ENGINEERING SPECIFICATION: ZURN Z1221

Wall urinal support system with top support plate. Complete with Dura-Coated rectangular steel uprights with welded feet, adjustable support plate, and mounting fasteners.

OPTIONS (Check/specify appropriate options)

PREFIXES

___ **Z** **Dura-Coated System with Universal Plate***

SUFFIXES

___ **-EZ** Easy to Install Assembly
___ **-58** Flush Valve Supply Support

SG:
MODEL OF WALL
CARRIER TO BE
Z1224 AS
SPECIFIED

* Regularly furnished unless otherwise specified.

Zurn Industries, LLC | Specification Drainage Operation
1801 Pittsburgh Avenue, Erie, PA U.S.A. 16502 · Ph. 855-663-9876, Fax 814-454-7929
In Canada | **Zurn Industries Limited**
3544 Nashua Drive, Mississauga, Ontario L4V 1L2 · Ph. 905-405-8272, Fax 905-405-1292
www.zurn.com

Rev. F
Date: 09/27/2017
C.N. No. 137975
Prod. | Dwg. No. Z1221