

**SHOP  
DRAWING  
REVIEW**

|   |
|---|
| X |
|   |
|   |
|   |

NOT REVIEWED  
REVIEWED  
REVIEWED AS NOTED  
REVISE AND RESUBMIT

This review by Hilditch Architect Inc. is for the sole purpose of ascertaining conformance with the general design concept features only, and does not in any way constitute review of the design of engineering elements which form part of the Contract Documents prepared by others. This review shall not mean that Hilditch Architect Inc. approves the design detail inherent in the shop drawings, responsibility for which shall remain with the Contractor submitting same, and such review shall not relieve the Contractor of his responsibility for errors or omissions in the shop drawings or of his responsibility for meeting all requirements of the Contract Documents. The Contractor is responsible for dimensions to be confirmed and correlated at the job site, for information that pertains solely to fabrication processes or to techniques of construction and installation and for co-ordination of the work of all trades.

***Hilditch Architect Inc.***

By: Sasha Stairs

Project No: 1809

Date Rec'd:

Date Rev'd: 2024.11.20

GC/CM: 2024.11.19

Consultant: 2024.11.19

## Submittal No. 02-R1

### Silencers


**Project Name:**  
**Neshama Hospice**

**Owner:**  
**Neshama**

**Prime Consultant:**  
**Hilditch Architect Inc**

**General Contractor: Renokrew**

RK: Tak Lau from Sustain Glode has already confirmed the substitution with E.H Price inhouse engineer (David Liong)

|  |  |                 |
|--|--|-----------------|
| <b>SHOP<br/>DRAWING</b><br><hr/> <b>SUBMITTAL<br/>REVIEW</b> | <b>JOB NAME</b>  | Neshama Hospice |
|  | <b>JOB #</b>   | 24-130          |
|  | <b>DATE</b>  | Nov 19, 2024    |
| <b>REVIEWED</b>  | <p>This review is for general conformance of plans and specifications only. Approvals are subject to subcontractors performance within the confines of the contract documents. Review of dimensions will not serve to relieve the subcontractor of contractual responsibility for any deviation from the contract requirements.</p> <p><b>SPECIFICATION</b></p> <p><input checked="" type="checkbox"/> SHOP DRAWING<br/><input type="checkbox"/> PRODUCT DATA<br/><input type="checkbox"/> DOCUMENTATION<br/><input type="checkbox"/> LETTER</p> <p><b>CHECKED BY:</b><br/><b>REVIEWED BY:</b><br/>JP<br/><b>TOTAL PAGES:</b> 14</p>  |                 |
| <b>REJECTED</b>  |  |                 |
| <b>REVIEW &amp; RESUBMIT</b>                                 |  |                 |
| <b>REVIEW AS NOTED</b>                                       |  |                 |
|  |  |                 |

### ***SustainGlobe Ltd.***

THIS DRAWING REVIEWED SOLELY FOR GENERAL CONFORMITY WITH DESIGN CONCEPTS. QUANTITIES, DETAILS, DIMENSIONS AND DESIGNS INHERENT IN THE SHOP DRAWINGS ARE THE CONTRACTOR'S RESPONSIBILITY TO VERIFY DATA WITH FIELD DIMENSIONS. CONTRACTOR IS SOLELY RESPONSIBLE FOR DESIGN OF MANUFACTURED ITEMS, FABRICATION PROCESSES AND TECHNIQUES OF CONSTRUCTION AND INSTALLATION OF EQUIPMENT.

**DATE RECEIVED:**

November 19, 2024

☒ MECHANICAL

☐ ELECTRICAL

☐ OTHERS

**THIS DRAWING IS:**

☐ REVIEWED

☒ REVIEWED AS NOTED

☐ REVIEWED AND  
TO BE RESUBMIT

**BY:** TL

**DATE:** November 19, 2024

**PROJ. NO.:** 18031



4 Audia Court, Unit 2  
Concord, ON L4K 3N5  
(905)-738-1400

## Su mittal 24-256-007

| PROJECT NAME    | PROJECT ADDRESS                                 | DATE SUBMITTED |
|-----------------|---|----------------|
| NESHAMA HOSPICE | 24-256 3 Cadillac Avenue North York, ON M3H 1R9 | Nov 13, 2024   |

| TO                                  | FROM  |
|-------------------------------------|---|
| Taranjeet Singh                     | PAUL LEDDY                                    |
| COMPANY                             | COMPANY                                       |
| 1568796 ONTARIO INC. C/A RENOKREW   | Consult Mechanical Inc.                       |
| EMAIL                               | EMAIL   |
| taranjeet@renokrew.com              | paul.l@consultmechanical.com                  |
| ADDRESS                             | ADDRESS                                       |
| 43 LEPAGE COURT TORONTO, ON M3J 1Z9 | 54 Audia Court, Unit 2<br>Concord, ON L4K 3N5 |

---

### Title

EH Price Silencers Rev 1

---

### Description

Tag SL-1R-2 EH Price Model # ERMT83/2D  
Tag SL-1R-3 EH Price Model # ERMT94/8C  
Tag SL-1R-1A EH Price Model # ERMT122/6D  
Tag SL-1R-1B EH Price Model # ERMT122/6D  
Tag SL-1S-2B EH Price Model # ERMT120/2D  
Tag SL-1S-2A EH Price Model # ERMT120/4D

---

### Package Items

| SPEC | SECTION | ITEM                  | TYPE          |
|------|---------|-----------------------|---------------|
| M-15 | M15     | Schedule of Silencers | Shop Drawings |



571 CHRISLEA RD., WOODBRIDGE ON., L4L 8A2

Tel: (905) 669-8988 Fax: (905) 669-8023

## Drawing Submittal:

**Project:** NESHAMA HOSPICE 3 CADILLAC AVE., NORTH YORK

**Contractor:** CONSULT MECHANICAL

**Engineer:** N/A

**Attention:** MARC

Enclosed are the submittal drawings for the above reference project.  
Would you please return one approved or corrected copy of each drawing.

Number of Copies: 1

## Delivery

SILENCERS

RESUBMIT

## E.H. Price Contact:

AMANDA STENNETT

Notes:

|                                     |   |
|-------------------------------------|---|
| <input type="checkbox"/>            | Orders released to the factory upon receipt of approved shop drawings.  |
| <input type="checkbox"/>            | For records only.   |
| <input type="checkbox"/>            | Orders released for fabrication at the request of the contractor.   |
| <input checked="" type="checkbox"/> | Orders released to the factory <u>upon receipt of approved shop drawings,</u><br>and <u>authorization by the contractor</u> to proceed. |

|   |     |           |            |             |                |             |           |                  |                         |   |                |         |              |                             |     |     |     |    |    |    |    |  |  |  |  |  |  |  |  |
|---|-----|-----------|------------|-------------|----------------|-------------|-----------|------------------|-------------------------|---|----------------|---------|--------------|-----------------------------|-----|-----|-----|----|----|----|----|--|--|--|--|--|--|--|--|
| Silencer Schedule   |     |           |            |             |                |             |           |                  |                         | <div>PRICE<sup>®</sup></div> <div>NOISE CONTROL</div> |                |         |              |                             |     |     |     |    |    |    |    |  |  |  |  |  |  |  |  |
| Project Name: Neshama Hospice   |     |           |            |             |                |             |           |                  |                         |   |                |         |              |                             |     |     |     |    |    |    |    |  |  |  |  |  |  |  |  |
| Engineer: Sustain Globe Ltd. Consulting Engineers   |     |           |            |             |                |             |           | Date: 11/13/2024 |                         |   |                |         |              |                             |     |     |     |    |    |    |    |  |  |  |  |  |  |  |  |
| Contractor:   |     |           |            |             |                |             |           | Revision:        |                         | Units: Metric   |                |         |              |                             |     |     |     |    |    |    |    |  |  |  |  |  |  |  |  |
| Customer:   |     |           |            |             |                |             |           |                  |                         |   |                |         |              |                             |     |     |     |    |    |    |    |  |  |  |  |  |  |  |  |
| Silencer Information  |     |           |            |             |                |             |           |                  | Duct System Information |   |                |         |              | Dynamic Insertion Loss (dB) |     |     |     |    |    |    |    |  |  |  |  |  |  |  |  |
| Tag   | Qty | Model     | Width (mm) | Height (mm) | Duct Dia. (mm) | Length (mm) | LegA (mm) | LegB (mm)        | Air Direction           | Flow (L/s)  | Velocity (m/s) | PD (Pa) | PD w/SE (Pa) | 63                          | 125 | 250 | 500 | 1k | 2k | 4k | 8k |  |  |  |  |  |  |  |  |
| SL-1R-2   | 1   | ERMT83/2C | 400        | 400         |                | 2100        | 1250      | 1250             | Reverse                 | 684   | 4.30           | 32      |              | 11                          | 18  | 26  | 32  | 42 | 49 | 39 | 21 |  |  |  |  |  |  |  |  |
| Const Notes: Galvanized, CL2 (18 GA), 22GA Perf Liner, Fiberglass, Polymer Film, Inlet: 2" Slip, Outlet: 2" Slip  |     |           |            |             |                |             |           |                  |                         |   |                |         |              |                             |     |     |     |    |    |    |    |  |  |  |  |  |  |  |  |
| SL-1R-3   | 1   | ERMT94/8C | 350        | 450         |                | 2400        | 1375      | 1375             | Forward                 | 748   | 4.70           | 25      |              | 11                          | 16  | 19  | 27  | 32 | 38 | 29 | 17 |  |  |  |  |  |  |  |  |
| Const Notes: Galvanized, CL2 (18 GA), 22GA Perf Liner, Fiberglass, Polymer Film, Inlet: 2" Slip, Outlet: 2" Slip  |     |           |            |             |                |             |           |                  |                         |   |                |         |              |                             |     |     |     |    |    |    |    |  |  |  |  |  |  |  |  |
| SL-1R-1A  | 1   | RMT122/6  | 305        | 610         |                | 3097        | 1878      | 1524             | Reverse                 | 1545  | 8.30           | 52      | 72           | 14                          | 20  | 25  | 39  | 45 | 48 | 36 | 20 |  |  |  |  |  |  |  |  |
| Const Notes: Galvanized, HTL2 (10 GA), 22GA Perf Liner, Fiberglass, Polymer Film, Inlet: 2" Slip, Outlet: 2" Slip |     |           |            |             |                |             |           |                  |                         |   |                |         |              |                             |     |     |     |    |    |    |    |  |  |  |  |  |  |  |  |
| SL-1R-1B  | 1   | RMT122/6  | 305        | 508         |                | 3097        | 1878      | 1524             | Reverse                 | 1287  | 8.30           | 52      | 72           | 14                          | 20  | 25  | 39  | 45 | 48 | 36 | 20 |  |  |  |  |  |  |  |  |
| Const Notes: Galvanized, HTL2 (10 GA), 22GA Perf Liner, Fiberglass, Polymer Film, Inlet: 2" Slip, Outlet: 2" Slip |     |           |            |             |                |             |           |                  |                         |   |                |         |              |                             |     |     |     |    |    |    |    |  |  |  |  |  |  |  |  |
| Acoustic Plenum   | 1   | AP        |            |             |                |             |           |                  |                         |   |                |         |              |                             |     |     |     |    |    |    |    |  |  |  |  |  |  |  |  |
| Const Notes:  |     |           |            |             |                |             |           |                  |                         |   |                |         |              |                             |     |     |     |    |    |    |    |  |  |  |  |  |  |  |  |
| SL-1S-2B  | 1   | RMT120/2C | 406        | 1016        |                | 3048        |           |                  | Forward                 | 2158  | 5.20           | 52      | 67           | 12                          | 17  | 26  | 41  | 47 | 55 | 34 | 20 |  |  |  |  |  |  |  |  |
| Const Notes: Galvanized, HTL2 (10 GA), 22GA Perf Liner, Fiberglass, Polymer Film, Inlet: 2" Slip, Outlet: 2" Slip |     |           |            |             |                |             |           |                  |                         |   |                |         |              |                             |     |     |     |    |    |    |    |  |  |  |  |  |  |  |  |
| SL-1S-2A  | 1   | RMT120/4C | 254        | 508         |                | 3048        |           |                  | Forward                 | 674   | 5.20           | 47      | 62           | 12                          | 16  | 27  | 40  | 45 | 49 | 26 | 15 |  |  |  |  |  |  |  |  |
| Const Notes: Galvanized, HTL2 (10 GA), 22GA Perf Liner, Fiberglass, Polymer Film, Inlet: 2" Slip, Outlet: 2" Slip |     |           |            |             |                |             |           |                  |                         |   |                |         |              |                             |     |     |     |    |    |    |    |  |  |  |  |  |  |  |  |



# Noise Control Submittals

**Job Name:** Neshama Hospice  
**Engineer:** Sustain Globe Ltd. Consulting Engineers  
**Date Printed:** 11/13/2024  
**Spec Section:** 15 - HVAC

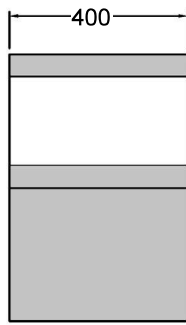
**Contact:** 571 Chrislea Rd., Unit 3  
Woodbridge, ON L4L 8A2

All-In-One  
Detailed Submittal Schedule  
Noise Control

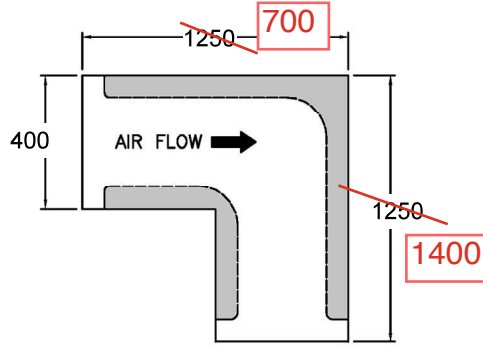
| #   | Qty | Model      | Tag             | Width (mm) | Height (mm) | Length (mm) | In. Leg (mm) | Out. Leg (mm) | Direction | Flow (L/s) | Vel. (m/s) | PD (Pa) | 63 | 125 | 250 | 500 | 1K | 2K | 4K | 8K | Line Instructions  |
|---|-----|------------|-----------------|------------|-------------|-------------|--------------|---------------|-----------|------------|------------|---------|----|-----|-----|-----|----|----|----|----|--|
| 1   | 1   | ERM783/20  | SL-18-2         | 400        | 400         | 2100        | 1250         | 1250          | Reverse   | 684        | 4.30       | 32      | 11 | 18  | 26  | 32  | 42 | 49 | 39 | 21 |  |
| Const Notes: Galvanized, CL2 (18 GA), 22GA Perf Liner, Fiberglass, Polymer Film, Inlet: 2" Slip, Outlet: 2" Slip  |     |            |                 |            |             |             |              |               |           |            |            |         |    |     |     |     |    |    |    |    |  |
| 2   | 1   | ERM794/8C  | SL-18-3         | 350        | 450         | 2400        | 1375         | 1375          | Forward   | 748        | 4.70       | 25      | 11 | 16  | 19  | 27  | 32 | 38 | 29 | 17 |  |
| Const Notes: Galvanized, CL2 (18 GA), 22GA Perf Liner, Fiberglass, Polymer Film, Inlet: 2" Slip, Outlet: 2" Slip  |     |            |                 |            |             |             |              |               |           |            |            |         |    |     |     |     |    |    |    |    |  |
| 3   | 1   | ERM7122/6B | SL-18-1A        | 305        | 610         | 3097        | 1878         | 1524          | Reverse   | 1545       | 8.30       | 63      | 16 | 23  | 26  | 36  | 41 | 45 | 35 | 21 | Transitional Elbow Silencer:<br>Inlet dimension: 300x600<br>Outlet dimension: 500x600  |
| Const Notes: Galvanized, HTL2 (10 GA), 22GA Perf Liner, Fiberglass, Polymer Film, Inlet: 2" Slip, Outlet: 2" Slip |     |            |                 |            |             |             |              |               |           |            |            |         |    |     |     |     |    |    |    |    |  |
| 4   | 1   | ERM7122/6B | SL-18-1B        | 305        | 508         | 3097        | 1878         | 1524          | Reverse   | 1287       | 8.30       | 52      | 16 | 23  | 26  | 36  | 41 | 45 | 35 | 21 | Transitional Elbow Silencer:<br>Inlet dimension: 300x500<br>Outlet dimension: 500x500  |
| Const Notes: Galvanized, HTL2 (10 GA), 22GA Perf Liner, Fiberglass, Polymer Film, Inlet: 2" Slip, Outlet: 2" Slip |     |            |                 |            |             |             |              |               |           |            |            |         |    |     |     |     |    |    |    |    |  |
| 5   | 1   | AP         | Acoustic Plenum |            |             |             |              |               |           |            |            |         |    |     |     |     |    |    |    |    | 2" H-Channel Acoustic Panels,<br>10 Gauge Galvanized Solid<br>Casing, 22 Gauge Galvanized<br>Perforated Liner, Glass Fiber<br>Acoustic Media with Polymer<br>Film Liner, c/w Trims and<br>Mounting Channels,<br>Hardware, Caulk and<br>Assembly Drawings. (Approx.<br>Total Panel Area = *42* sqft).<br>Exact location and size of<br>openings TBD at submittal<br>approval.<br>Estimated weight 518 lbs |
| Const Notes:  |     |            |                 |            |             |             |              |               |           |            |            |         |    |     |     |     |    |    |    |    |  |
| 6   | 1   | 8MT120/20  | SL-15-2B        | 406        | 1016        | 3048        |              |               | Forward   | 2158       | 5.20       | 52      | 12 | 17  | 26  | 41  | 47 | 55 | 34 | 20 |  |
| Const Notes: Galvanized, HTL2 (10 GA), 22GA Perf Liner, Fiberglass, Polymer Film, Inlet: 2" Slip, Outlet: 2" Slip |     |            |                 |            |             |             |              |               |           |            |            |         |    |     |     |     |    |    |    |    |  |
| 7   | 1   | 8MT120/40  | SL-15-2A        | 254        | 508         | 3048        |              |               | Forward   | 674        | 5.20       | 47      | 12 | 16  | 27  | 40  | 45 | 49 | 26 | 15 |  |
| Const Notes: Galvanized, HTL2 (10 GA), 22GA Perf Liner, Fiberglass, Polymer Film, Inlet: 2" Slip, Outlet: 2" Slip |     |            |                 |            |             |             |              |               |           |            |            |         |    |     |     |     |    |    |    |    |  |

## Dimensions

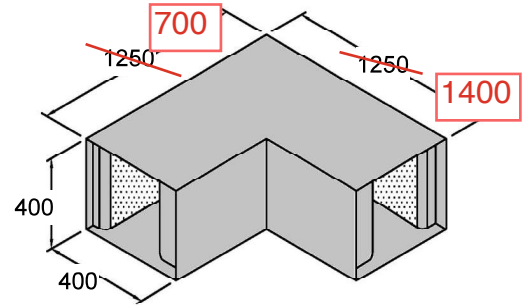
|              |    |                |           |                   |      |
|--------------|----|----------------|-----------|-------------------|------|
| Quantity:    | 1  | Width (mm):    | 400       | Center Line (mm): | 2100 |
| Weight (kg): | 57 | Height (mm):   | 400       | Inlet Leg (mm):   | 1250 |
|              |    | Configuration: | Un-Nested | Outlet Leg (mm):  | 1250 |



END VIEW



TOP VIEW



ISO VIEW

Images are generic representations of and not to scale. The actual configuration may not be shown.

## Performance

|                     |         |
|---------------------|---------|
| Air Volume (l/s):   | 684     |
| Air Velocity (m/s): | 4.3     |
| Air Direction:      | Reverse |
| Pressure Drop (Pa): | 32      |
| Installed PD (Pa):  | 35      |

### Dynamic Insertion Loss (dB)

| 63 Hz | 125 Hz | 250 Hz | 500 Hz | 1000 Hz | 2000 Hz | 4000 Hz | 8000 Hz |
|-------|--------|--------|--------|---------|---------|---------|---------|
| 11    | 18     | 26     | 32     | 42      | 49      | 39      | 21      |

### Generated Noise (dB)

| 63 Hz | 125 Hz | 250 Hz | 500 Hz | 1000 Hz | 2000 Hz | 4000 Hz | 8000 Hz |
|-------|--------|--------|--------|---------|---------|---------|---------|
| 42    | 36     | 30     | 16     | 31      | 30      | 28      | 19      |

## Construction

|                   |                  |                   |              |                    |         |
|-------------------|------------------|-------------------|--------------|--------------------|---------|
| Casing:           | 18 GA Galvanized | Acoustic Media:   | Glass Fiber  | Inlet Connection:  | 2" Slip |
| Perforated Liner: | 22 GA Galvanized | Media Protection: | Polymer Film | Outlet Connection: | 2" Slip |

## Notes

- Price silencer material has flame spread classification < 25 and smoke development rating < 50 when tested in accordance with ASTM E84, UL723 and NFPA255.
- System effects assume elbow with vanes at the silencer inlet and ideal at the silencer outlet.
- Price silencers consist of ASTM A653(M) steel casings and liners.
- Price silencers are tested in our NVLAP-Accredited sound lab.
- Performance data is derived from test data in conformance with ASTM-E477-20.
- Acoustic standoff is provided standard with polymer film liner.
- Customer to confirm all dimensions.

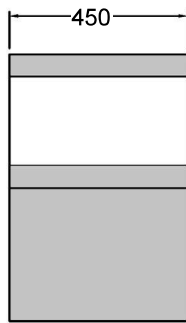
PROJECT: Neshama Hospice  
ENGINEER: Sustain Globe Ltd. Consulting Engineers  
DESCRIPTION: Elbow Medium Velocity Film Lined Silencer  
ERMT//I/2100/2/D/M/400/400/2100/400/400/1/400/1.0/1250/1250/850/850/CL2/G/U/F/PL/S2/S2/0////P22///

CUSTOMER:  
UNIT OF MEASURE: Hard Metric

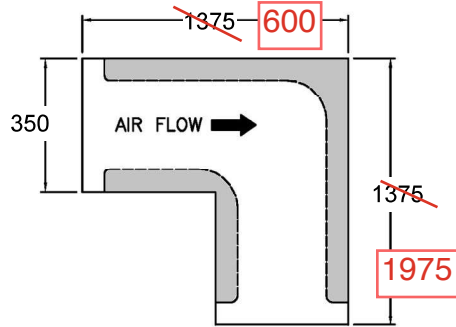
SUBMITTAL DATE: 11/13/2024  
PRICE QUOTE NO:  
DRAWING REVISION:

## Dimensions

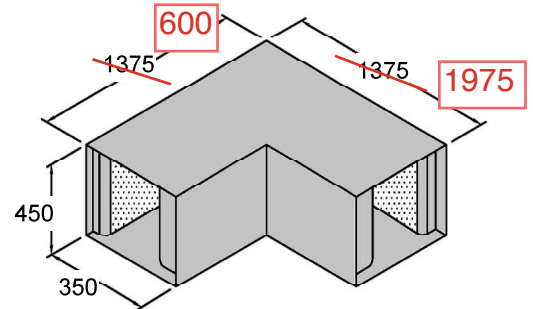
|              |    |                |           |                   |      |
|--------------|----|----------------|-----------|-------------------|------|
| Quantity:    | 1  | Width (mm):    | 350       | Center Line (mm): | 2400 |
| Weight (kg): | 56 | Height (mm):   | 450       | Inlet Leg (mm):   | 1375 |
|              |    | Configuration: | Un-Nested | Outlet Leg (mm):  | 1375 |



END VIEW



TOP VIEW



ISO VIEW

This silencer is selected a 0.5 module configuration, as per image above.  
Images are generic representations of and not to scale. The actual configuration may not be shown.

## Performance

|                     |         |
|---------------------|---------|
| Air Volume (l/s):   | 748     |
| Air Velocity (m/s): | 4.7     |
| Air Direction:      | Forward |
| Pressure Drop (Pa): | 25      |
| Installed PD (Pa):  | 25      |

### Dynamic Insertion Loss (dB)

| 63 Hz | 125 Hz | 250 Hz | 500 Hz | 1000 Hz | 2000 Hz | 4000 Hz | 8000 Hz |
|-------|--------|--------|--------|---------|---------|---------|---------|
| 11    | 16     | 19     | 27     | 32      | 38      | 29      | 17      |

### Generated Noise (dB)

| 63 Hz | 125 Hz | 250 Hz | 500 Hz | 1000 Hz | 2000 Hz | 4000 Hz | 8000 Hz |
|-------|--------|--------|--------|---------|---------|---------|---------|
| 33    | 34     | 27     | 30     | 30      | 22      | 24      | 14      |

## Construction

|                   |                  |                   |              |                    |         |
|-------------------|------------------|-------------------|--------------|--------------------|---------|
| Casing:           | 18 GA Galvanized | Acoustic Media:   | Glass Fiber  | Inlet Connection:  | 2" Slip |
| Perforated Liner: | 22 GA Galvanized | Media Protection: | Polymer Film | Outlet Connection: | 2" Slip |

## Notes

- Price silencer material has flame spread classification < 25 and smoke development rating < 50 when tested in accordance with ASTM E84, UL723 and NFPA255.
- System effects assume elbow with vanes at the silencer inlet and ideal at the silencer outlet.
- Price silencers consist of ASTM A653(M) steel casings and liners.
- Price silencers are tested in our NVLAP-Accredited sound lab.
- Performance data is derived from test data in conformance with ASTM-E477-20.
- Acoustic standoff is provided standard with polymer film liner.
- Customer to confirm all dimensions.

**PROJECT:** Neshama Hospice  
**ENGINEER:** Sustain Globe Ltd. Consulting Engineers  
**DESCRIPTION:** Elbow Medium Velocity Film Lined Silencer  
ERMT//I/2400/8/C/M/350/450/2400/350/450/1/700/0.5/1375/1375/1025/1025/CL2/G/U/F/PL/S2/S2/0//P22//

**CUSTOMER:**  
**UNIT OF MEASURE:** Hard Metric

**SUBMITTAL DATE:** 11/13/2024  
**PRICE QUOTE NO:**  
**DRAWING REVISION:**

SUBMITTAL SHEET

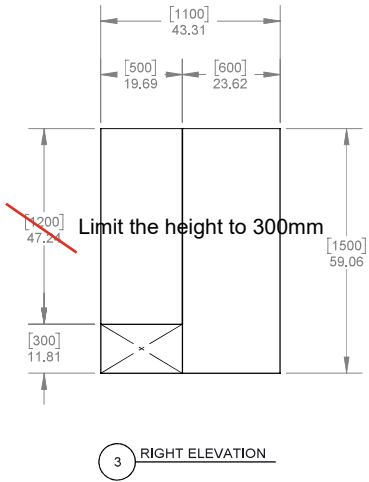
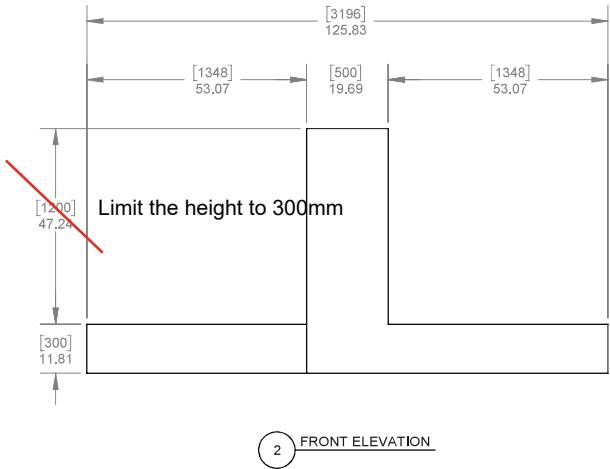
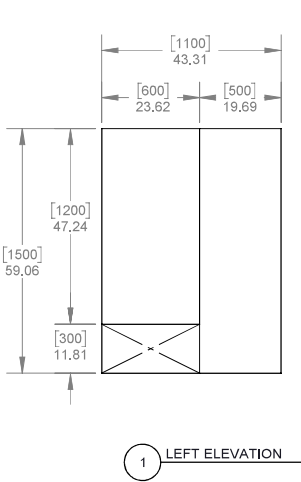
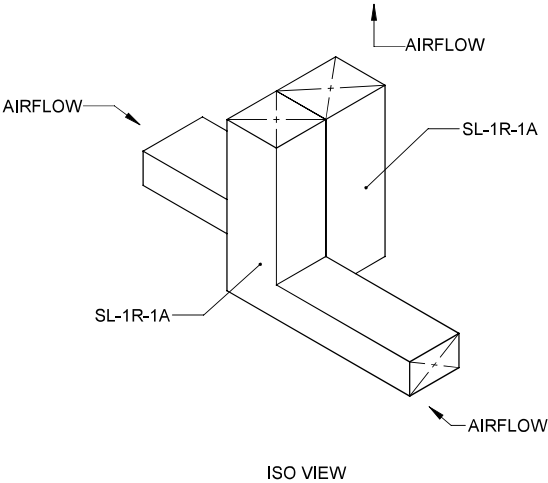
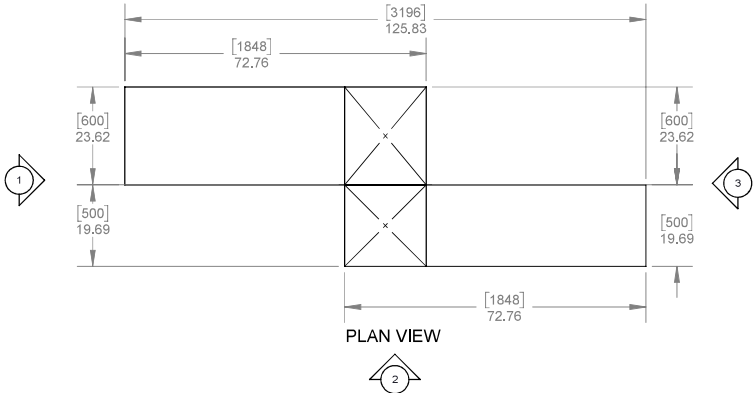
APPROVED FOR CONSTRUCTION

SIGNATURE: \_\_\_\_\_

DATE: \_\_\_\_\_

GENERIC SUBMITTAL ONLY.  
ACTUAL CONFIGURATION MAY DIFFER

APPROX. WEIGHTS  
SL-1R-1A = 215lbs  
SL-1R-1B = 194lbs



PRICE INDUSTRIES INC.  
2975 Shawnee Ridge Court | Suwanee, GA  
Phone: (770) 623-8050

PRICE INDUSTRIES LTD.  
638 Raleigh Street | Winnipeg, MB  
Phone: (204) 669-4220

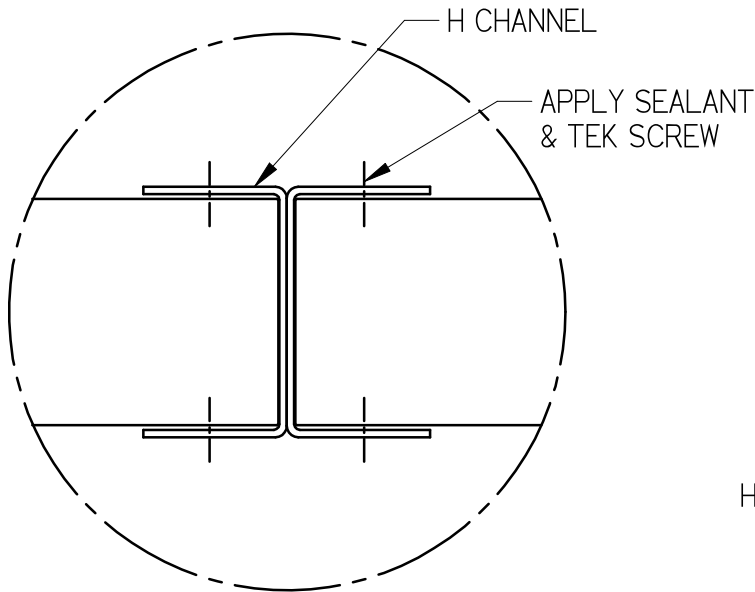
www.priceindustries.com  
NoiseControl@priceindustries.com

- STANDARD CONSTRUCTION:**
- 10GA GALVANIZED CASING
  - 22GA GALVANIZED INTERNALS
- MEDIA:**
- GLASS FIBER ACOUSTIC MEDIA W/ POLYMER FILM & ACOUSTIC STANDOFF
- DUCT CONNECTION:**
- 2" SLIP CONNECTION

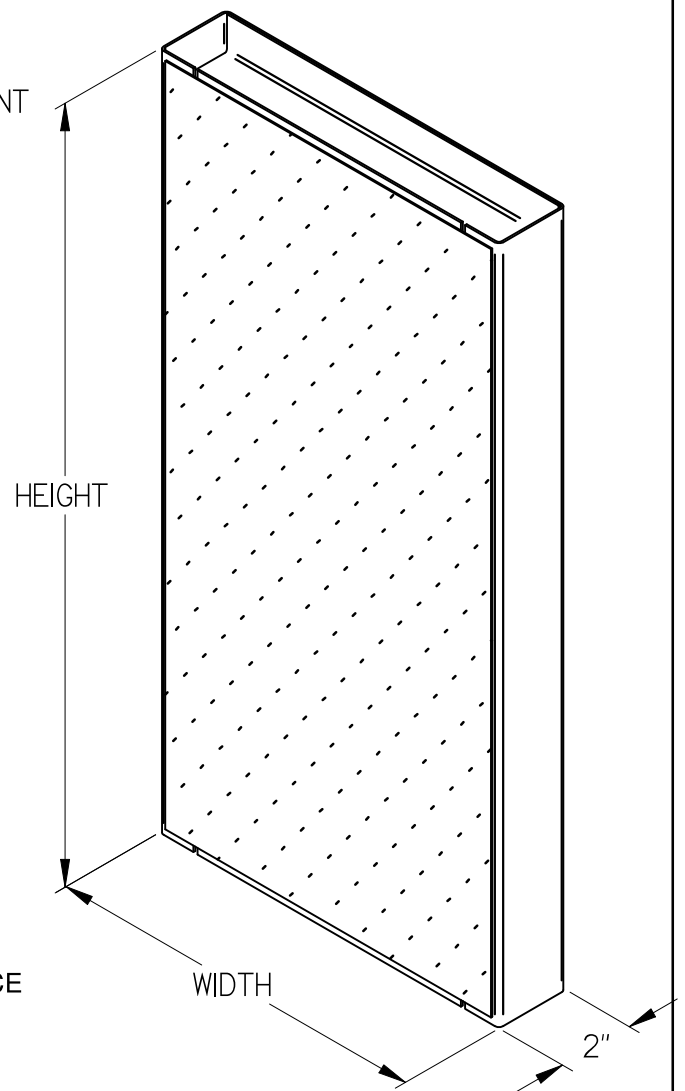
- GENERAL NOTES:
- PERFORMANCE DATA IS DERIVED FROM TEST VALUES OBTAINED IN STRICT ACCORDANCE WITH ASTM E477-13.
  - ALL MATERIAL USED IN THE CONSTRUCTION OF PRICE SILENCERS HAS A FLAME SPREAD CLASSIFICATION OF <25 AND A SMOKE DEVELOPMENT RATING OF <50 WHEN TESTED IN ACCORDANCE WITH ASTM E84, UL723 AND NFPA255.
  - DYNAMIC INSERTION LOSSES ARE LIMITED TO 55dB DUE TO FLANKING. THE INSTALLED SILENCER MAY HAVE INCREASED PRESSURE DROP RESULTING FROM SYSTEM EFFECT CAUSED BY DUCT ELEMENTS LOCATED UPSTREAM OR DOWNSTREAM OF THE SILENCER.
  -

|   |                   |            |              |
|---|-------------------|------------|--------------|
| A                                       | SUBMITTAL CREATED | 2024/11/12 | DB           |
| REV.                                    | DESCRIPTION       | DATE       | BY           |
| REVISIONS                               |                   |            |              |
| Issue Date                              | 11/12/2024        | Drawn: DB  | Checked: TP  |
|   |                   | TP         | TP           |
| Project: NESHAMA HOSPICE 3 CADILLAC AVE |                   |            |              |
| Rep Office: E.H. PRICE SALES-TORONTO    |                   |            |              |
| Description: SILENCERS                  |                   |            |              |
| Tag: SILENCERS                          |                   |            |              |
| Drawing No.                             | Q24-008330-A02    | Revision A | Sheet 1 of 1 |

| TAG      | MODEL       | DIRECTION | VELOCITY (m/s) | AIRFLOW (L/s) | P.D. (Pa) | INSERTION LOSS |     |     |     |    |    |    |    | GENERATED NOISE |     |     |     |    |    |    |    |
|----------|-------------|-----------|----------------|---------------|-----------|----------------|-----|-----|-----|----|----|----|----|-----------------|-----|-----|-----|----|----|----|----|
|          |             |           |                |               |           | 63             | 125 | 250 | 500 | 1K | 2K | 4K | 8K | 63              | 125 | 250 | 500 | 1K | 2K | 4K | 8K |
| SL-1R-1A | ERM122/6BXD | REVERSE   | 8.3            | 1545          | 63        | 16             | 23  | 26  | 36  | 41 | 45 | 35 | 21 | 52              | 45  | 40  | 30  | 40 | 40 | 40 | 32 |
| SL-1R-1B | ERM122/6BXD | REVERSE   | 8.3            | 1287          | 63        | 16             | 23  | 26  | 36  | 41 | 45 | 35 | 21 | 51              | 44  | 39  | 29  | 39 | 39 | 40 | 32 |



CONNECTION DETAIL



**STANDARD CONSTRUCTION:**

- 14 GAUGE GALVANIZED OUTSIDE FACE
- 22 GAUGE GALVANIZED PERFORATED INSIDE FACE
- FIBERGLASS ACOUSTIC MEDIA
- 2" NOMINAL WALL THICKNESS
- APPROXIMATELY 15 P.S.F.


| Transmission Loss (dB) Measured at Octave Band Cente Frequencies    |        |       |       |       |       |       | Overall |
|---|--------|-------|-------|-------|-------|-------|---------|
| Model   | 125 Hz | 250Hz | 500Hz | 1 kHz | 2 kHz | 4 kHz | STC     |
| QLP2  | 22     | 22    | 22    | 22    | 22    | 22    | 22      |
| Absorption (Coefficient) Measured at Octave Band Center Frequencies |        |       |       |       |       |       | STC     |
| Model   | 125 Hz | 250Hz | 500Hz | 1 kHz | 2 kHz | 4 kHz |         |
| QLP2  | 0.50   | 0.83  | 1.05  | 0.95  | 0.97  | 0.89  | 0.95    |

☐ APPROVED FOR CONSTRUCTION

SIGNED:

DATE:

ALL METRIC DIMENSIONS ( ) ARE SOFT CONVERTED. IMPERIAL DIMENSIONS ARE CONVERTED TO METRIC AND ROUNDED TO THE NEAREST MILLIMETER.

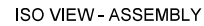
|  |                                      |   |  |
|--|--------------------------------------|---|--|
| <b>PROJECT:</b> Neshama Hospice                          |                                      |  |  |
| <b>ENGINEER:</b> Sustain Globe Ltd. Consulting Engineers |                                      |   | <b>QUIET-LINE</b><br>ACOUSTIC PANEL<br>2" THICK<br>H CHANNEL |
| <b>CUSTOMER:</b>   |                                      | PXY45204  |  |
| <b>SUBMITTAL DATE:</b> 11/13/2024                        | <b>SPEC. SYMBOL:</b> Acoustic Plenum | 05/12/2014  |  |

**APPROVED FOR CONSTRUCTION**

SIGNATURE: \_\_\_\_\_

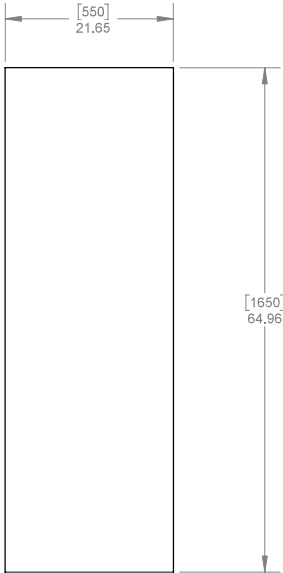
DATE: \_\_\_\_\_

**APPROX. WEIGHT** [ ][ ][ ][ ][ ][ ][ ][ ] = 987 lbs

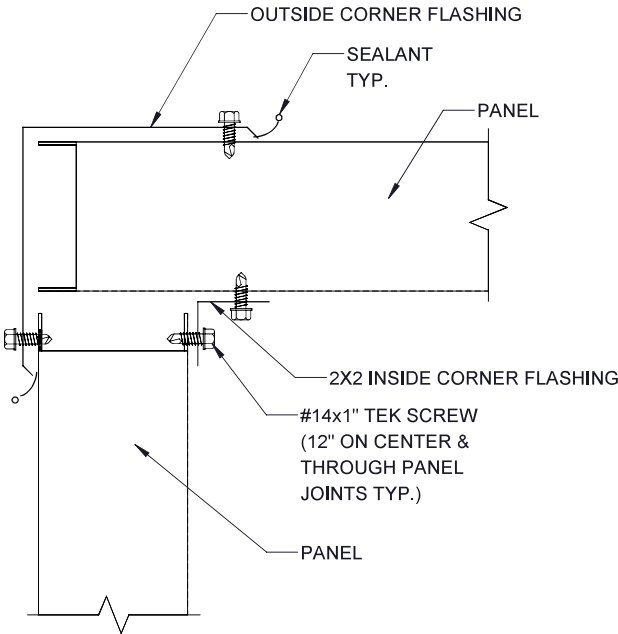


Solidworks

SUBMITTAL SHEET



5 BOTTOM VIEW



A PANEL TO PANEL CONNECTION



PRICE INDUSTRIES INC.  
2975 Shawnee Ridge Court | Suwanee, GA  
Phone: (770) 623-8050

PRICE INDUSTRIES LTD.  
638 Raleigh Street | Winnipeg, MB  
Phone: (204) 669-4220

www.priceindustries.com  
NoiseControl@priceindustries.com

- PANEL CONSTRUCTION:**
- 2" H-CHANNEL
- EXTERNAL CONSTRUCTION:**
- 10GA GALVANIZED SOLID CASING
- INTERNAL CONSTRUCTION:**
- 22GA GALVANIZED PERF. LINER
- MEDIA:**
- GLASS FIBER ACOUSTIC MEDIA W/ POLYMER FILM
- INCLUDED:**
- TRIM & FLASHING
  - MOUNTING CHANNELS
  - ASSEMBLY INSTRUCTIONS
  - QTY. 1 DOOR

\*ASSEMBLED ON-SITE BY OTHERS\*

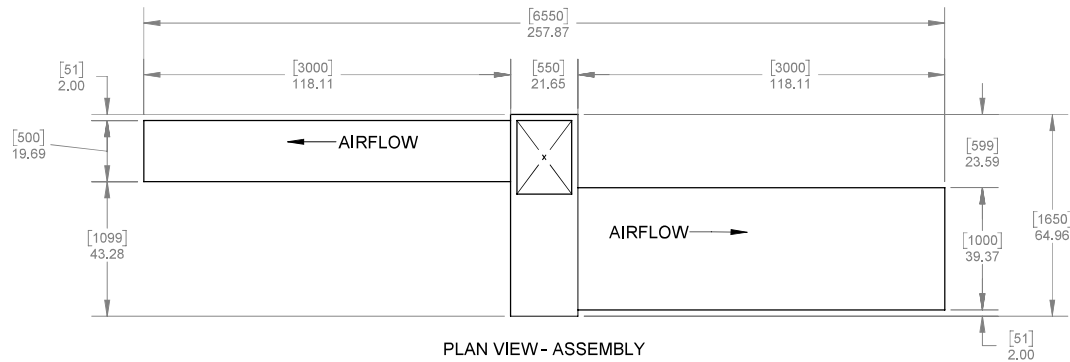
- GENERAL NOTES:**
1. PANEL SIZES TO BE DETERMINED ONCE C/O SIZES AND LOCATIONS HAVE BEEN FINALIZED AND APPROVED.
  2. ASSEMBLED ON SITE BY OTHERS. STRUCTURAL SUPPORT FOR PANELS AND MECHANICAL COMPONENTS TO BE DETERMINED AND SUPPLIED BY OTHERS.
  - 3.

|   |                   |            |    |
|---|-------------------|------------|----|
| A                                       | SUBMITTAL CREATED | 2024/11/12 | DB |
| REV.                                    | DESCRIPTION       | DATE       | BY |
| REVISIONS                               |                   |            |    |
| Issue Date                              | 11/12/2024        | Drawn:     | DB |
| Checked:                                | TP                | Approved:  | TP |
| Project: NESHAMA HOSPICE 3 CADILLAC AVE |                   |            |    |
| Rep Office: E.H. PRICE SALES-TORONTO    |                   |            |    |
| Description: ACOUSTICAL PANELS          |                   |            |    |
| Tag: ACOUSTIC PLENUM                    |                   |            |    |
| Drawing No.                             | Q24-008330-A01    | Revision   | A  |
| Sheet                                   | 2 of 3            |            |    |

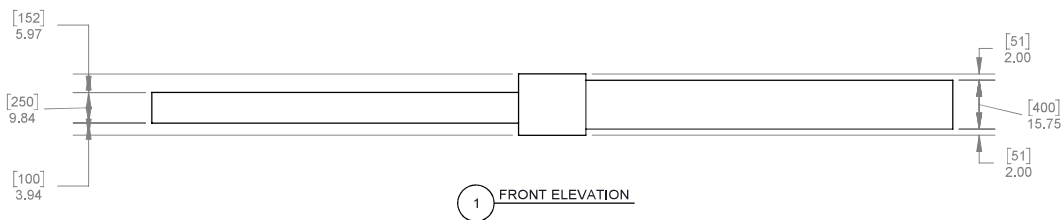
Solidworks

SUBMITTAL SHEET

GENERIC SUBMITTAL ONLY.  
ACTUAL CONFIGURATION MAY DIFFER



PLAN VIEW - ASSEMBLY



FRONT ELEVATION



PRICE INDUSTRIES INC.  
2975 Shawnee Ridge Court | Suwanee, GA  
Phone: (770) 623-8050

PRICE INDUSTRIES LTD.  
638 Raleigh Street | Winnipeg, MB  
Phone: (204) 669-4220

www.priceindustries.com  
NoiseControl@priceindustries.com

**PANEL CONSTRUCTION:**  
- 2" H-CHANNEL  
**EXTERNAL CONSTRUCTION:**  
- 10GA GALVANIZED SOLID CASING  
**INTERNAL CONSTRUCTION:**  
- 22GA GALVANIZED PERF. LINER  
**MEDIA:**  
- GLASS FIBER ACOUSTIC MEDIA  
W/ POLYMER FILM

**INCLUDED:**  
- TRIM & FLASHING  
- MOUNTING CHANNELS  
- ASSEMBLY INSTRUCTIONS  
- QTY. 1 DOOR

\*ASSEMBLED ON-SITE BY OTHERS\*

**GENERAL NOTES:**  
1. PANEL SIZES TO BE DETERMINED  
ONCE C/O SIZES AND LOCATIONS  
HAVE BEEN FINALIZED AND  
APPROVED.  
2. ASSEMBLED ON SITE BY OTHERS.  
3. STRUCTURAL SUPPORT FOR  
PANELS AND MECHANICAL  
COMPONENTS TO BE DETERMINED  
AND SUPPLIED BY OTHERS.

|      |                   |            |    |
|------|-------------------|------------|----|
| A    | SUBMITTAL CREATED | 2024/11/12 | DB |
| REV. | DESCRIPTION       | DATE       | BY |

| REVISIONS  |       |         |          |
|------------|-------|---------|----------|
| Issue Date | Drawn | Checked | Approved |
| 11/12/2024 | DB    | TP      | TP       |

Project: NESHAMA HOSPICE 3 CADILLAC AVE

Rep Office: E.H. PRICE SALES-TORONTO

Description: ACOUSTICAL PANELS

Tag: ACOUSTIC PLENUM

|                |          |        |
|----------------|----------|--------|
| Drawing No.    | Revision | Sheet  |
| Q24-008330-A01 | A        | 3 of 3 |

Soldworks

| Silencer Information   |     |           |            |             |                |             |           |           | Duct System Information |            |                |         |              | Dynamic Insertion Loss (dB) / Generated Noise (dB) |     |     |     |    |    |    |    |
|--|-----|-----------|------------|-------------|----------------|-------------|-----------|-----------|-------------------------|------------|----------------|---------|--------------|--|-----|-----|-----|----|----|----|----|
| Tag  | Qty | Model     | Width (mm) | Height (mm) | Duct Dia. (mm) | Length (mm) | LegA (mm) | LegB (mm) | Air Direction           | Flow (L/s) | Velocity (m/s) | PD (Pa) | PD w/SE (Pa) | 63   | 125 | 250 | 500 | 1k | 2k | 4k | 8k |
| SL-1S-2A   | 1   | RMT120/4D | 250        | 500         |                | 3000        |           |           | Forward                 | 674        | 5.20           | 47      | 62           | 19   | 23  | 34  | 46  | 51 | 55 | 32 | 21 |
| Const Notes: Galvanized, HTL2 (10 GA), 22GA Perf Liner, Fiberglass, Polymer Film, Inlet: 2" Slip, Outlet: 2" Slip; Approximate weight is 155 lbs |     |           |            |             |                |             |           |           |                         |            |                |         |              | 59   | 55  | 50  | 45  | 39 | 32 | 25 | 20 |
| SL-1S-2B   | 1   | RMT120/2D | 400        | 1000        |                | 3000        |           |           | Forward                 | 2158       | 5.20           | 52      | 67           | 14   | 20  | 34  | 53  | 55 | 55 | 45 | 31 |
| Const Notes: Galvanized, HTL2 (10 GA), 22GA Perf Liner, Fiberglass, Polymer Film, Inlet: 2" Slip, Outlet: 2" Slip; Approximate weight is 314 lbs |     |           |            |             |                |             |           |           |                         |            |                |         |              | 64   | 60  | 54  | 47  | 43 | 34 | 26 | 25 |

United States Department of Commerce  
National Institute of Standards and Technology



---

## Certificate of Accreditation to ISO/IEC 17025:2017

---

NVLAP LAB CODE: 200874-0

### Price Sound Laboratory

Winnipeg, Manitoba  
Canada

*is accredited by the National Voluntary Laboratory Accreditation Program for specific services,  
listed on the Scope of Accreditation, for:*

### Acoustical Testing Services

*This laboratory is accredited in accordance with the recognized International Standard ISO/IEC 17025:2017.  
This accreditation demonstrates technical competence for a defined scope and the operation of a laboratory quality  
management system (refer to joint ISO-ILAC-IAF Communiqué on ISO/IEC 17025).*

---

2024-06-03 through 2025-06-30

*Effective Dates*



A handwritten signature in blue ink, reading "Dana S. Laman".

---

*For the National Voluntary Laboratory Accreditation Program*