

FOR QUESTIONS, CALL THE  
International Sales Office  
REGION 20  
PHONE: (647) 977 - 2217  
EMAIL: [reg20@captiveaire.com](mailto:reg20@captiveaire.com)

HOOD INFORMATION - JOB#7179537

HOOD NO	TAG	MODEL	MANUFACTURER	LENGTH	MAX COOKING TEMP	TYPE	APPLIANCE DUTY	DESIGN CFM/FT	TOTAL EXH CFM	EXHAUST PLENUM							HOOD CONSTRUCTION	HOOD CONFIG	
										RISER(S)								END TO END	ROW
										WIDTH	LENG	HEIGHT	DIA	CFM	VEL	SP			
1	KH-1	3650 SA-BD-2	SUNAIR	4' 8"	600 DEG	I	HEAVY	175	817	9'	8'	4'		817	1634	-0.736"	430 SS WHERE EXPOSED	ALONE	ALONE
2	KH-2	3650 SA-BD-2	SUNAIR	4' 8"	600 DEG	I	HEAVY	175	817	9'	8'	4'		817	1634	-0.736"	430 SS WHERE EXPOSED	ALONE	ALONE

HOOD INFORMATION

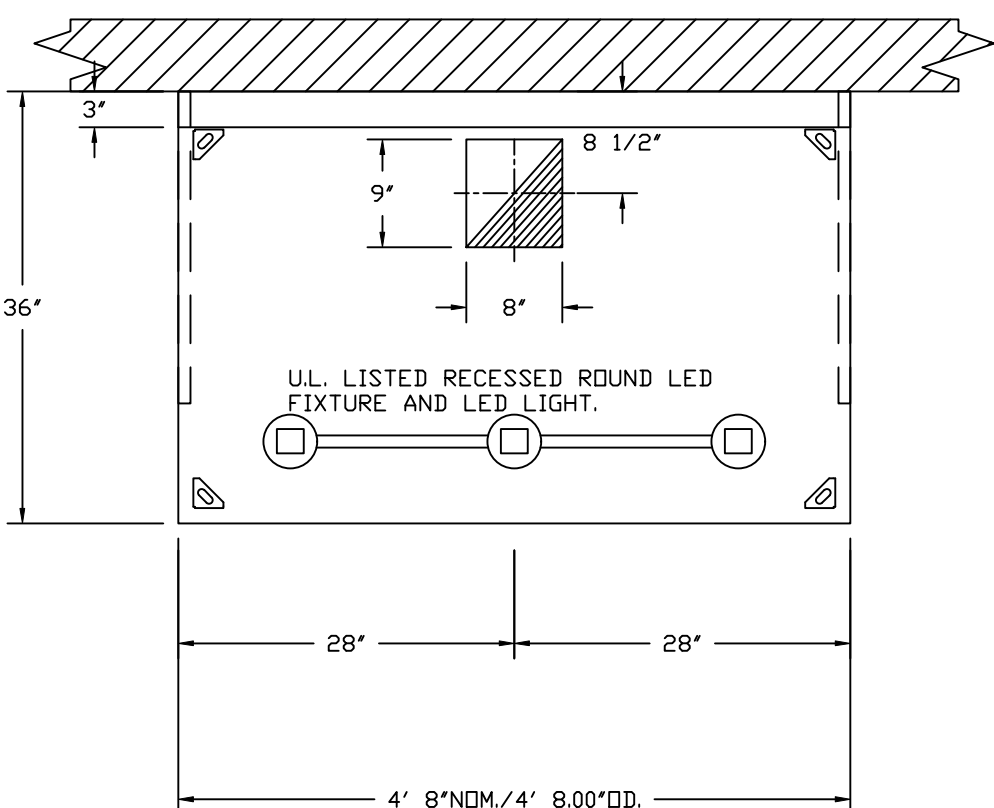
[illegible]

### HOOD OPTIONS

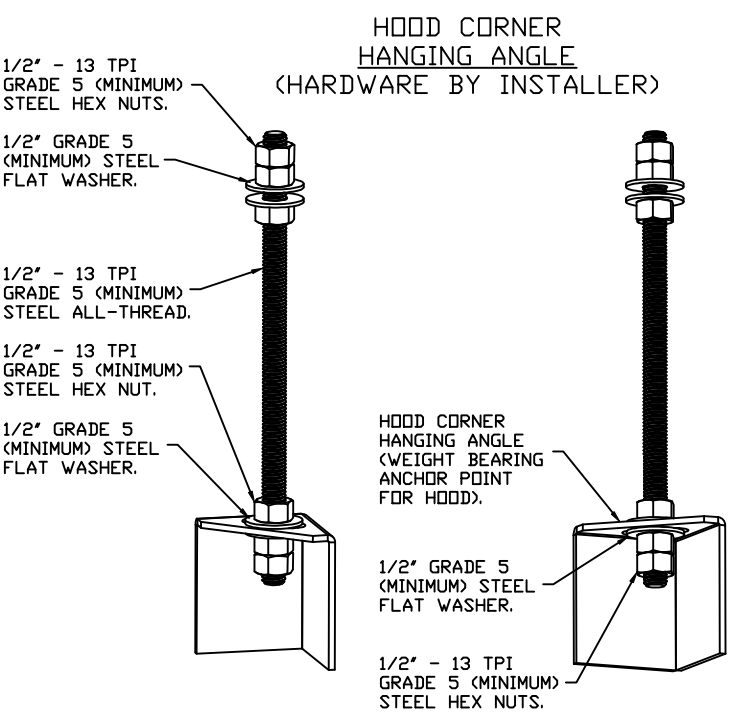
HOOD NO	TAG	OPTION							
1	KH-1	RIGHT QUARTER END PANEL	26"	TOP WIDTH,	0"	BOTTOM WIDTH,	26"	HIGH	430 SS.
		LEFT QUARTER END PANEL	26"	TOP WIDTH,	0"	BOTTOM WIDTH,	26"	HIGH	430 SS.
		RISER SENSOR INSTALL 6IN PLEN.							
2	KH-2	RIGHT QUARTER END PANEL	26"	TOP WIDTH,	0"	BOTTOM WIDTH,	26"	HIGH	430 SS.
		LEFT QUARTER END PANEL	26"	TOP WIDTH,	0"	BOTTOM WIDTH,	26"	HIGH	430 SS.
		RISER SENSOR INSTALL 6IN PLEN.							

### WALL-MOUNT UTILITY CABINET

UTILITY CABINET(S)							
HOOD NO	LOCATION	SIZE	FIRE SYSTEM		ELECTRICAL	SWITCHES	WEIGHT
			TYPE	SIZE	MODEL #	QUANTITY	
1	WALL MNT	12"x30"x24"	TANK FS	4.0			200.00 LBS
2	WALL MNT	12"x30"x24"	TANK FS	4.0			200.00 LBS

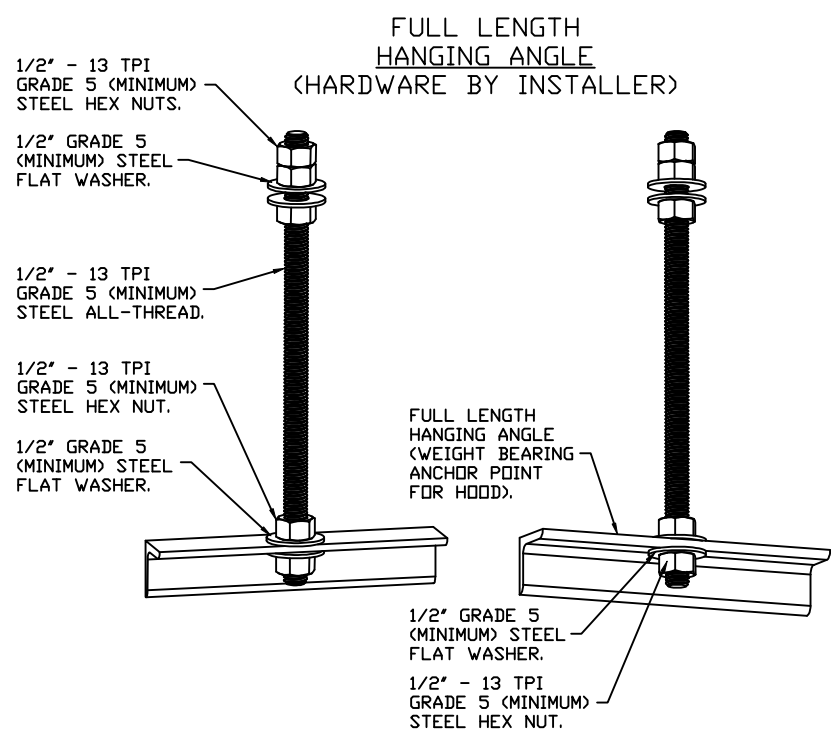


PLAN VIEW - HOOD #1 (KH-1), #2 (KH-2)  
4' 8.00" LONG 3650SA-BD-2



## ASSEMBLY INSTRUCTIONS

HANGING ANGLE MUST BE SUPPORTED WITH 1/2" - 13 TPI GRADE 5 (MINIMUM) ALL-THREAD, SANDWICH HANGING ANGLES AND CEILING ANCHOR POINTS WITH 1/2" GRADE 5 (MINIMUM) STEEL FLAT WASHERS AND 1/2" - 13 TPI GRADE 5 (MINIMUM) HEX NUTS AS SHOWN. MUST USE DOUBLED HEX NUT CONFIGURATION BENEATH HOOD HANGING ANGLES AND ABOVE CEILING ANCHORS. MAINTAIN 1/4" OF EXPOSED THREADS BENEATH BOTTOM HEX NUT. TORQUE ALL HEX NUTS TO 57 FT-LBS.



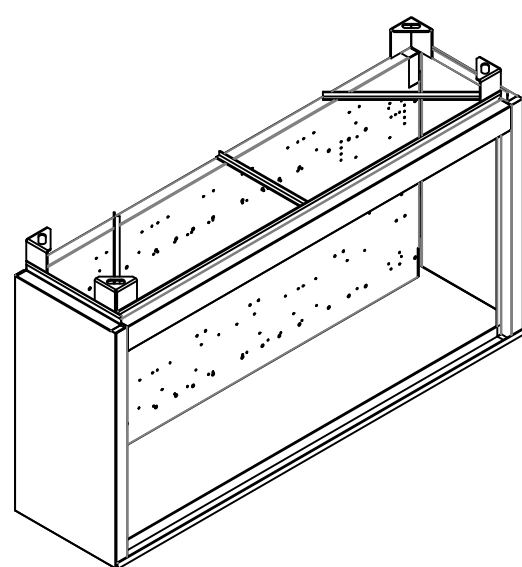
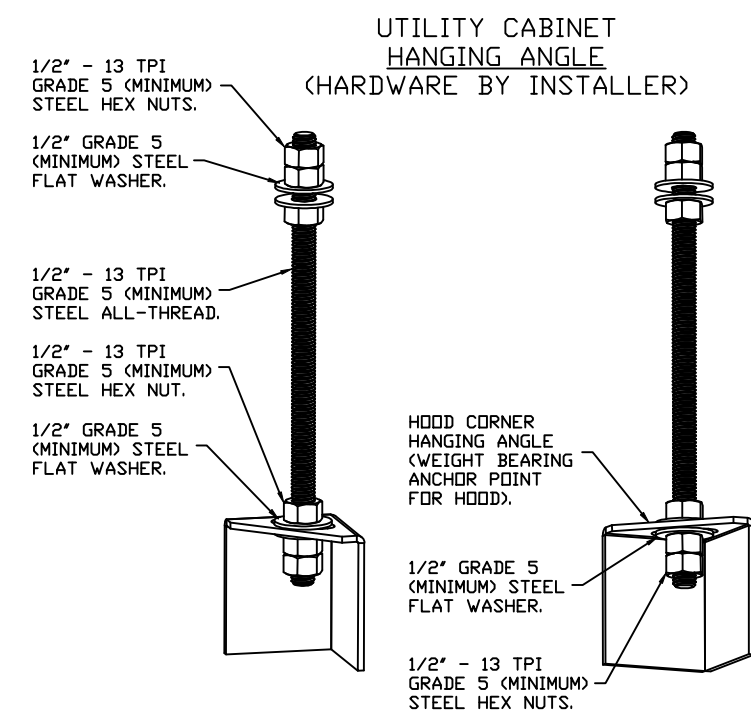
## ASSEMBLY INSTRUCTIONS

HANGING ANGLE MUST BE SUPPORTED WITH 1/2" - 13 TPI GRADE 5 (MINIMUM) ALL-THREAD. SANDWICH HANGING ANGLES AND CEILING ANCHOR POINTS WITH 1/2" GRADE 5 (MINIMUM) STEEL FLAT WASHERS AND 1/2" - 13 TPI GRADE 5 (MINIMUM) HEX NUTS AS SHOWN. MUST USE DOUBLED HEX NUT CONFIGURATION ABOVE CEILING ANCHORS. SINGLE HEX NUT BENEATH HANGING ANGLE IS ACCEPTABLE FOR FULL LENGTH HANGING ANGLES. MAINTAIN 1/4" OF EXPOSED THREADS BENEATH BOTTOM HEX NUT. TORQUE ALL HEX NUTS TO 57 FT-LBS.

## WALL-MOUNT UTILITY CABINET ASSEMBLY INSTRUCTIONS

CABINET TO BE HUNG BY OTHERS. SEE UTILITY CABINET  
SCHEDULE FOR CABINET SIZE.

HANGING ANGLE MUST BE SUPPORTED WITH 1/2" - 13 TPI GRADE 5 (MINIMUM) ALL-THREAD. SANDWICH HANGING ANGLES AND CEILING ANCHOR POINTS WITH 1/2" GRADE 5 (MINIMUM) STEEL FLAT WASHERS AND 1/2" - 13 TPI GRADE 5 (MINIMUM) HEX NUTS AS SHOWN. MUST USE DOUBLED HEX NUT CONFIGURATION BENEATH UTILITY CABINET HANGING ANGLES AND ABOVE CEILING ANCHORS. MAINTAIN 1/4" OF EXPOSED THREADS BENEATH BOTTOM HEX NUT. TORQUE ALL HEX NUTS TO 57 FT-LBS.



SPECIFICATION: CAPTRATE® GREASE-STOP® SOLID FILTER

THE CAPTRATE GREASE-STOP SOLID FILTER IS A SINGLE-STAGE FILTER FEATURING A UNIQUE S-BAFFLE DESIGN IN CONJUNCTION WITH A SLOTTED REAR BAFFLE DESIGN, TO DELIVER EXCEPTIONAL FILTRATION EFFICIENCY.

FILTER IS STAINLESS STEEL CONSTRUCTION, AND SIZED TO FIT INTO STANDARD 2-INCH DEEP HOOD CHANNEL(S).

UNITS SHALL INCLUDE STAINLESS STEEL HANDLES AND A FASTENING DEVICE TO SECURE THE TWO COMPONENTS WHEN ASSEMBLED.

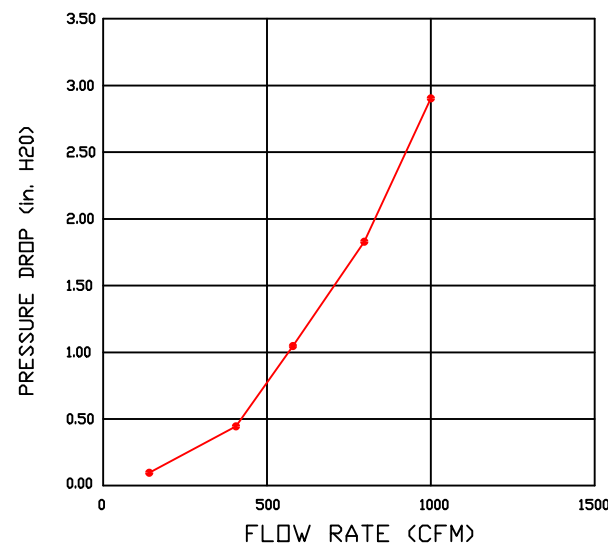
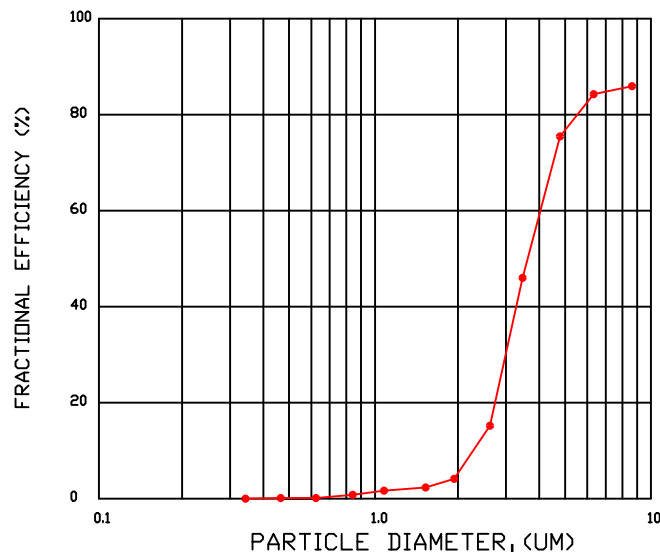
GREASE EXTRACTION EFFICIENCY PERFORMANCE SHALL REMOVE AT LEAST 75% OF GREASE PARTICLES FIVE MICRONS IN SIZE, AND 85% GREASE PARTICLES SEVEN MICRONS IN SIZE AND LARGER, WITH A CORRESPONDING PRESSURE DROP NOT TO EXCEED 1.0 INCHES OF WATER GAUGE.

THE CAPTRATE GREASE-STOP SOLD WAS TESTED TO ASTM STANDARD ASTM F2519-05.  
MANUFACTURER APPROVED FOR USE IN SOLID FUEL APPLICATIONS AS A SPARK ARRESTER.

EFFICIENCY VS. PARTICLE DIAMETER

### EFFICIENCY VS. PARTICLE DIAMETER

### PRESSURE DROP VS. FLOW RATE



CAPTRATE FILTERS ARE BUILT IN COMPLIANCE WITH:

NFPA #96.

NSF STANDARD #2.

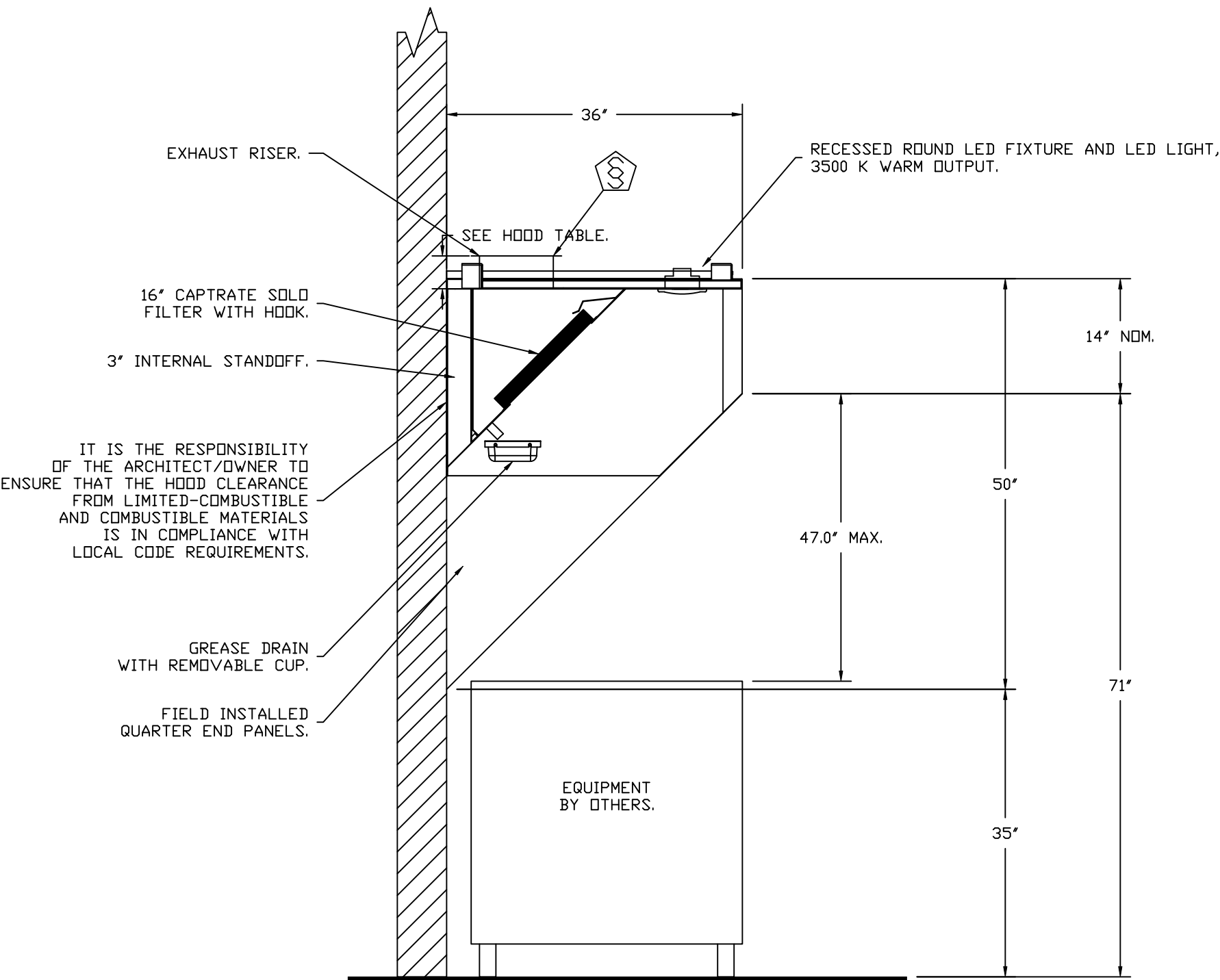
UL STANDARD #1046.  
INT. MECH. CERE. (MOS)

INT. MECH.  
ULC-S649.

### CLEARANCE TO COMBUSTIBLES


HOODS #	SURFACE	*CLEARANCE
1,2	TOP	18"
	FRONT	0"
	BACK	18"
	LEFT	18"
	RIGHT	18"

- \*0" CLEARANCE TO COMBUSTIBLES CONFORMS TO UL710 STANDARD.






SECTION VIEW - MODEL 3650SA-BD-2  
HOOD - #1 (KH-1), #2 (KH-2)

REVISIONS		DATE:
DESCRIPTION		
△		
△		
△		
△		



**International Sales Office**

4444 Eastgate Parkway, Unit #20, Mississauga, ON, L4W 4T6 PHONE: (647) 977 - 2217 FAX: 9192275905 EMAIL: reg20@captiveworld.com

Neshama Hospice R3

25 Brightwood Street,

Toronto, ON, M3H 2Z7

<b>DATE:</b> 11/20/2024
<b>DWG.#:</b> 7179537
<b>DRAWN BY:</b> Ryan Fung
<b>SCALE:</b> 3/4" = 1'-0"
<b>MASTER DRAWING</b>

**SHEET NO.**

1

FIRE SYSTEM INFORMATION – JOB#7179537

FIRE SYSTEM NO	TAG	TYPE	SIZE	MAX FP	DESIGN FP	INSTALLATION	
						SYSTEM	LOCATION ON HOOD
1		TANK FS	4.0	20	18	WALL UTILITY CABINET RIGHT	N/A
2		TANK FS	4.0	20	18	WALL UTILITY CABINET LEFT	N/A

GAS VALVE(S)

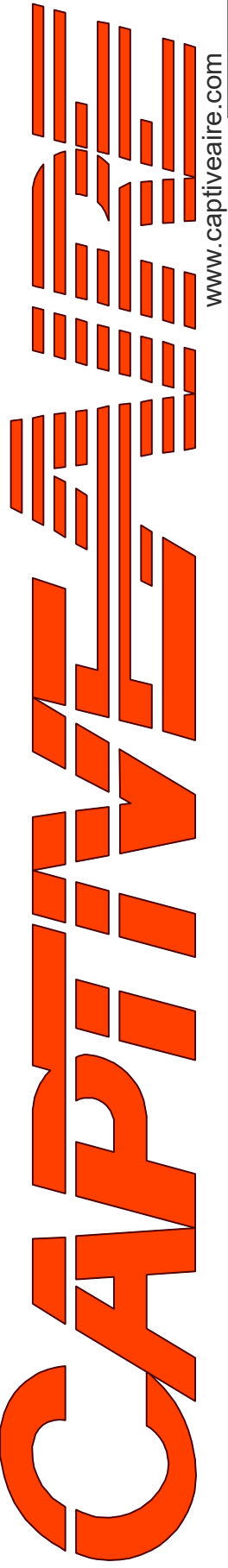
FIRE SYSTEM NO	TAG	TYPE	SIZE	SUPPLIED BY
1		SC ELECTRICAL	2.000	CAPTIVEAIRE SYSTEMS
2		SC ELECTRICAL	2.000	CAPTIVEAIRE SYSTEMS

FIRE SYSTEM PARTS LIST KEY

FIRE SYSTEM NO	TAG	KEY NUMBER – PART DESCRIPTION	QTY BY FACTORY	QTY BY DIST
1		0 – 0 – 12-F28021-32144-DT-360 DUCT FIRE THERMOSTAT WITH 12 FOOT WIRE LEADS. NO, CLOSE ON TEMP RISE AT 360°F. (A0034310).	1	0
		0 – 0 – 87-300001-001 TANK – PRESSURIZED TANK USED FOR TANK FIRE SUPPRESSION.	1	0
		0 – 0 – 87-300030-001 PRIMARY ACTUATOR KIT (PAK) – ACTUATOR AND RELEASE SOLENOID ASSEMBLY, ONE NEEDED PER FIRE SYSTEM, SUPERVISED, TANK FIRE SUPPRESSION.	1	0
		0 – 0 – 87-300152-001 HARDWARE, SVA BOLTS, TANK FIRE SUPPRESSION.	4	0
		0 – 0 – 98694A115 HARDWARE, DATANKLOCK LOCKING BRACKET SQUARE NUTS 5/16” ZINC, TANK FIRE SUPPRESSION.	2	0
		0 – 0 – A0034332 JUNCTION BOX FOR MANUAL PULL STATION. 1.5” DEEP BACK BOX, RED COLOR.	1	0
		0 – 0 – DATANKLOCK DISCHARGE ADAPTER TANK LOCKING PLATE FOR FIRE SYSTEM TANK INSTALLATION IN UTILITY CABINETS, TANK FIRE SUPPRESSION.	1	0
		0 – 0 – SLPOND-10FT SUPERVISED LOOP CONNECTION KIT. CONTAINS THE PARTS NEEDED TO CONNECT THE SUPERVISED LOOP BETWEEN END TO END HOODS WITH LESS THAN A 9’ GAP OR BACK TO BACK HOODS. KIT CONTAINS 12 FEET OF BLACK MG WIRE, 12 FEET OF TAN MG WIRE, 10 FEET OF FLEXIBLE CONDUIT, AND TWO 7/8” CONNECTORS.	2	0
		0 – 0 – TANK STRAP TANK STRAP – USED FOR TANK FIRE SUPPRESSION.	3	0
		0 – 0 – TFS-UCTANKBRACKET TANK BRACKET FOR FIRE SYSTEM TANK INSTALLATION IN UTILITY CABINETS, TANK FIRE SUPPRESSION.	1	0
		0 – 0 – WK-283952-000 DISCHARGE ADAPTER, TANK FIRE SUPPRESSION.	1	0
		34 – 34 – A0034331 24VDC SINGLE ACTION MANUAL ACTUATION DEVICE (PUSH/PULL STATION) WITH PROTECTIVE COVER, ONE (1) NORMALLY OPEN CONTACT. RED COLOR.	1	0
		0 – 0 – TANK FIRE SUPPRESSION MAINTENANCE GUIDE UTILITY CABINET LABEL SHEET.	1	0
		0 – 0 – TANK FIRE SUPPRESSION POST-DISCHARGE PROCEDURE UTILITY CABINET LABEL SHEET.	1	0
2		0 – 0 – 12-F28021-32144-DT-360 DUCT FIRE THERMOSTAT WITH 12 FOOT WIRE LEADS. NO, CLOSE ON TEMP RISE AT 360°F. (A0034310).	1	0
		0 – 0 – 4429K153 1/2” MALE NPT TO 1/2” FEMALE NPT ELBOW, BRASS.	1	0
		0 – 0 – 4429K422 1/2” X 1/4” BRASS REDUCING BUSHING.	1	0
		0 – 0 – 79525 1/2” 90 PRO-PRESS ELBOW WITH 1/2” NPT FEMALE CONNECTION, VIEGA.	1	0
		0 – 0 – 79580 1/2” X 1/2” PRO-PRESS TEE X 1/2” NPT FEMALE CONNECTION, VIEGA.	1	0
		0 – 0 – 87-300001-001 TANK – PRESSURIZED TANK USED FOR TANK FIRE SUPPRESSION.	1	0
		0 – 0 – 87-300030-001 PRIMARY ACTUATOR KIT (PAK) – ACTUATOR AND RELEASE SOLENOID ASSEMBLY, ONE NEEDED PER FIRE SYSTEM, SUPERVISED, TANK FIRE SUPPRESSION.	1	0
		0 – 0 – 87-300152-001 HARDWARE, SVA BOLTS, TANK FIRE SUPPRESSION.	4	0
		0 – 0 – 98694A115 HARDWARE, DATANKLOCK LOCKING BRACKET SQUARE NUTS 5/16” ZINC, TANK FIRE SUPPRESSION.	2	0
		0 – 0 – A0034332 JUNCTION BOX FOR MANUAL PULL STATION. 1.5” DEEP BACK BOX, RED COLOR.	1	0
		0 – 0 – A31484 1/4” NPT SCHRADER VALVE AND CAP, JB INDUSTRIES. 1/4” FLARE X 1/4” MPT HALF UNION. USED ON TANK SERVICE PORT.	1	0
		0 – 0 – DATANKLOCK DISCHARGE ADAPTER TANK LOCKING PLATE FOR FIRE SYSTEM TANK INSTALLATION IN UTILITY CABINETS, TANK FIRE SUPPRESSION.	1	0
		0 – 0 – SLPOND-10FT SUPERVISED LOOP CONNECTION KIT. CONTAINS THE PARTS NEEDED TO CONNECT THE SUPERVISED LOOP BETWEEN END TO END HOODS WITH LESS THAN A 9’ GAP OR BACK TO BACK HOODS. KIT CONTAINS 12 FEET OF BLACK MG WIRE, 12 FEET OF TAN MG WIRE, 10 FEET OF FLEXIBLE CONDUIT, AND TWO 7/8” CONNECTORS.	2	0
		0 – 0 – TANK STRAP TANK STRAP – USED FOR TANK FIRE SUPPRESSION.	3	0
		0 – 0 – TFS-UCTANKBRACKET TANK BRACKET FOR FIRE SYSTEM TANK INSTALLATION IN UTILITY CABINETS, TANK FIRE SUPPRESSION.	1	0
		0 – 0 – WK-283952-000 DISCHARGE ADAPTER, TANK FIRE SUPPRESSION.	1	0
		34 – 34 – A0034331 24VDC SINGLE ACTION MANUAL ACTUATION DEVICE (PUSH/PULL STATION) WITH PROTECTIVE COVER, ONE (1) NORMALLY OPEN CONTACT. RED COLOR.	1	0
		ADDITIONAL PARTS TO BE DETERMINED...		

REVISIONS

DESCRIPTION	DATE:
Δ	
Δ	
Δ	
Δ	



www.captivefire.com

International Sales Office

4444 Easigate Parkway, Unit #20, Mississauga, ON, L4W 4T6 PHONE: (647) 977 - 2217 FAX: 919275905 EMAIL: reg20@captivefire.com

Neshama Hospice R3

25 Brightwood Street,

Toronto, ON, M3H 2Z7

DATE: 11/20/2024

DWG.#: 7179537

DRAWN BY: Ryan Fung

SCALE: 3/4" = 1'-0"

MASTER DRAWING

SHEET NO.

2

EXHAUST FAN INFORMATION – JOB#7179537

FAN UNIT NO	TAG	QTY	FAN UNIT MODEL #	MANUFACTURER	CFM	ESP	RPM	MOTOR ENCL	HP	BHP	PHASE	VDLT	FLA	DISCHARGE VELOCITY	WEIGHT (LBS)	SDNES
1	KEF-1	1	SA-USBI11DD-RM	SUNAIR	817	2,500	2334	DDP,PREMIUM	2,000	0.7700	3	208	5.4	871 FPM	284	21.1
2	KEF-2	1	SA-USBI11DD-RM	SUNAIR	817	2,500	2334	DDP,PREMIUM	2,000	0.7700	3	208	5.4	871 FPM	284	21.1

FAN OPTIONS

FAN UNIT NO	TAG	QTY	DESCRIPTION
1	KEF-1	1	UTILITY SET GREASE CUP
		1	BI – DISCHARGE ORIENTATION VERTICAL UPPER LEFT – CW INLET SIDE
		1	CURB MOUNTED SLED FOR USBI 11. USED TO MOUNT ON 41" L X 27" W CURB
		1	BI11 – RAIN CAP ASSEMBLY
		1	BI11 – INLET RING USED TO CONNECT NON-FACTORY DUCT
		1	BLUE RUBBER VIBRATION ISOLATORS FOR BI UTILITY SETS (SET OF 4)
		1	2 YEAR PARTS WARRANTY
2	KEF-2	1	UTILITY SET GREASE CUP
		1	BI – DISCHARGE ORIENTATION VERTICAL UPPER LEFT – CW INLET SIDE
		1	CURB MOUNTED SLED FOR USBI 11. USED TO MOUNT ON 41" L X 27" W CURB
		1	BI11 – RAIN CAP ASSEMBLY
		1	BI11 – INLET RING USED TO CONNECT NON-FACTORY DUCT
		1	BLUE RUBBER VIBRATION ISOLATORS FOR BI UTILITY SETS (SET OF 4)
		1	2 YEAR PARTS WARRANTY

FAN ACCESSORIES

FAN UNIT NO	TAG	EXHAUST			SUPPLY			
		GREASE CUP	GRAVITY DAMPER	WALL MOUNT	SIDE DISCHARGE	GRAVITY DAMPER	MOTORIZED DAMPER	WALL MOUNT
1	KEF-1	YES						
2	KEF-2	YES						

CURB ASSEMBLIES

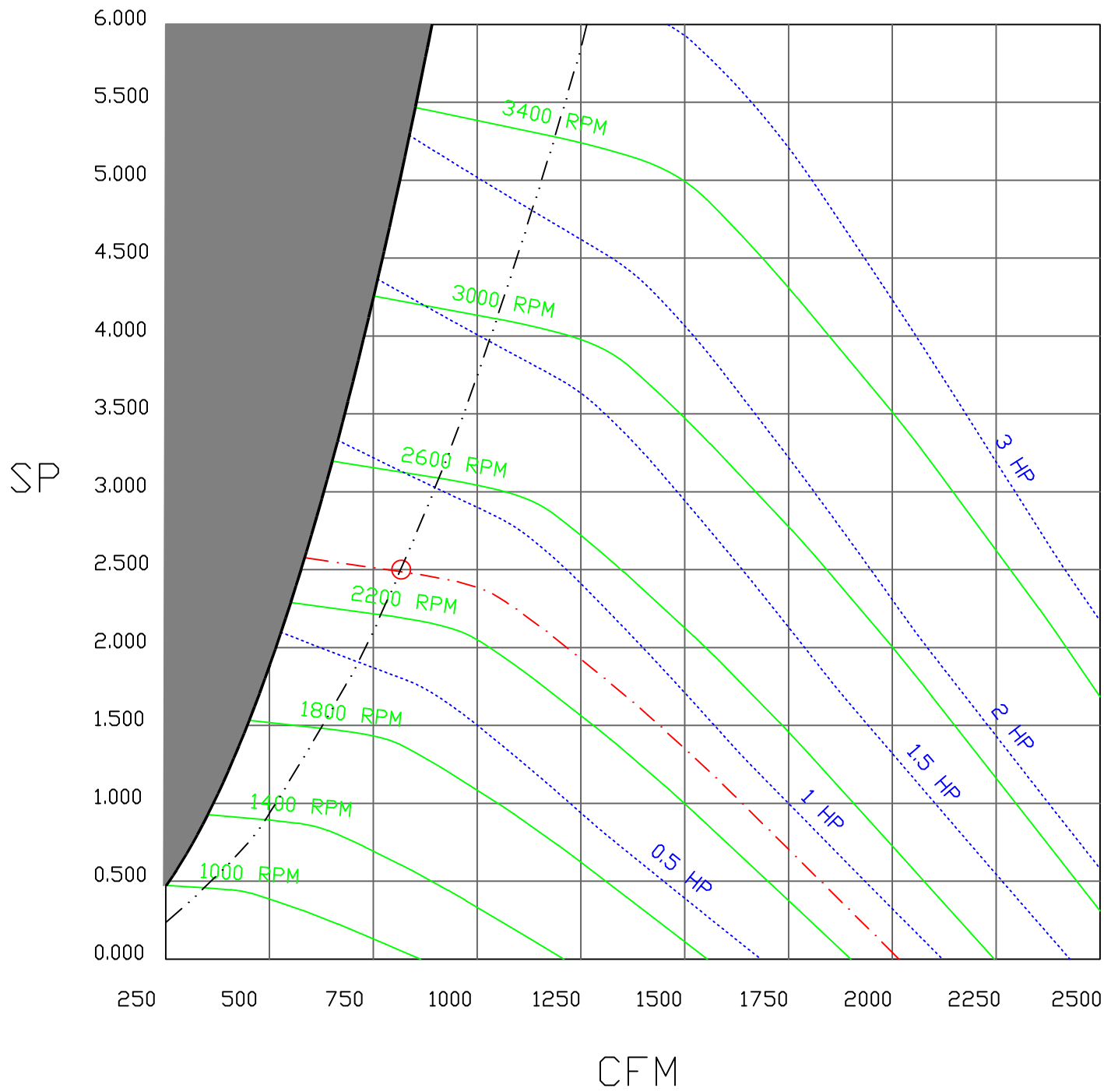
NO	ON FAN	TAG	WEIGHT	ITEM	SIZE
1	# 1	KEF-1	39 LBS	CURB	27,000"W X 41,000"L X 12,000"H.
2	# 2	KEF-2	39 LBS	CURB	27,000"W X 41,000"L X 12,000"H.

FAN SOUND DATA

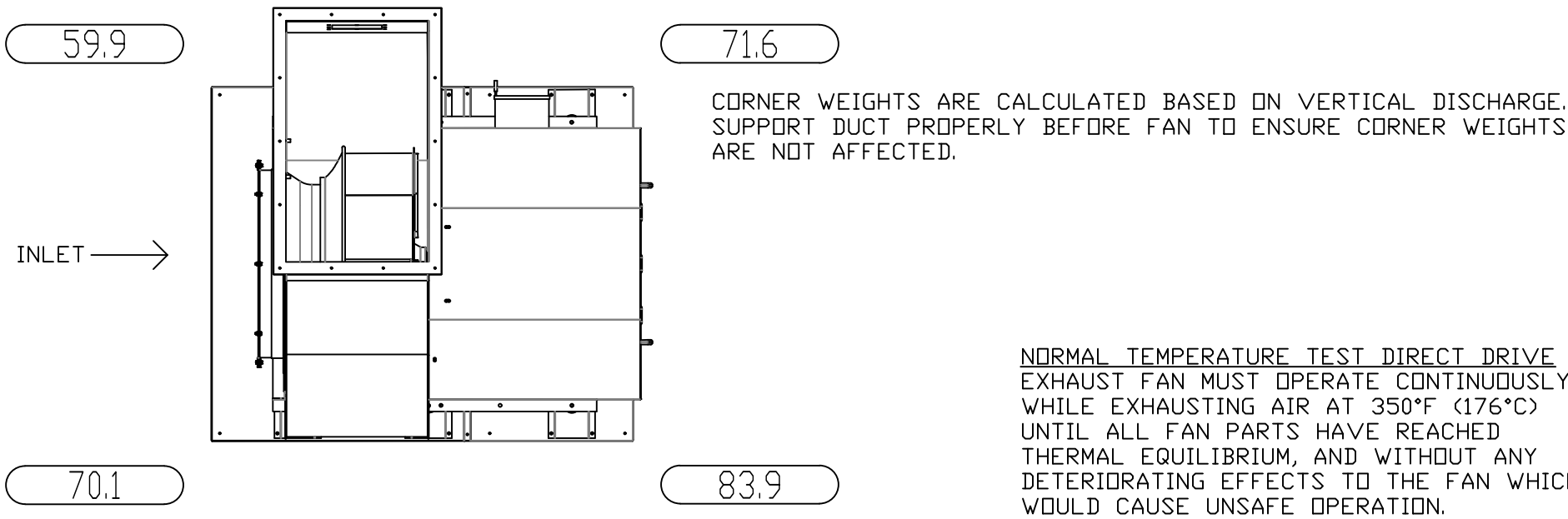
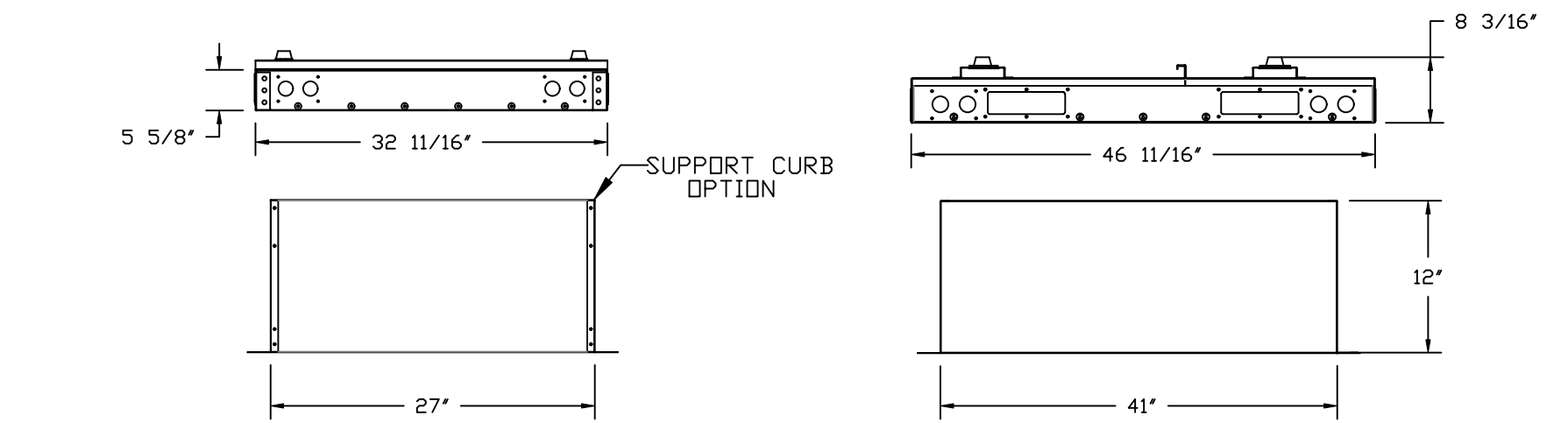
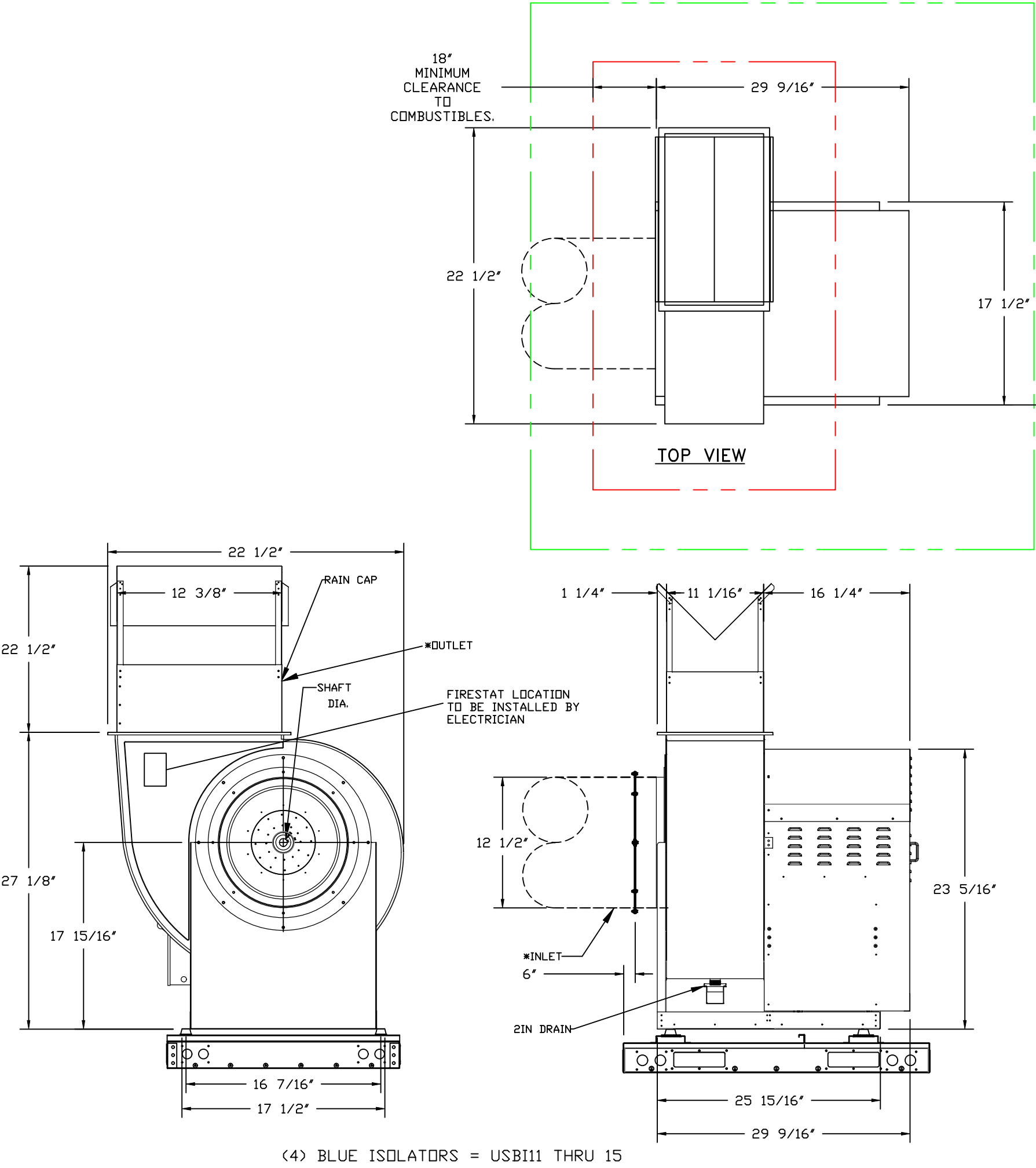
FAN UNIT NO	TAG	MOTOR	SOUND DATA			OCTAVE BAND SOUND DATA								
			LWA	SDNES @ 5 FT	DBA @ 5 FT	DISTANCE (FT)	63 HZ	125 HZ	250 HZ	500 HZ	1 KHZ	2 KHZ	4 KHZ	8 KHZ
1	KEF-1	EXHAUST	83.5	21.149535800634	72	5	75.2	85.5	86	82	77.4	72.5	66.7	60.7
2	KEF-2	EXHAUST	83.5	21.149535800634	72	5	75.2	85.5	86	82	77.4	72.5	66.7	60.7

FANS #1 (KEF-1) #2 (KEF-2) – EXHAUST PERFORMANCE CURVES.

817 CFM, 2.5 SP @ 2334 RPM AND 0.77 BHP AT 492 FEET AND 120 DEG F.  
\* PLEASE NOTE THAT THESE CURVES WERE ADJUSTED FOR JOB SPECIFIC TEMPERATURE AND ALTITUDE.



FANS #1 (KEF-1), #2 (KEF-2) – SA-USBI11DD-RM EXHAUST FAN



- FEATURES:**
- CURB MOUNTED FANS WITH VIBRATION ISOLATOR
  - FULL PERIMETER CURB
  - LIFTING HOOK POCKETS ON ALL SIDES
  - UL705
  - UL762 & ULC-S645 (RESTAURANT MODEL)
  - HIGH HEAT OPERATION DIRECT DRIVE 350°F (176°C)
  - HEAT SLINGER
  - GREASE CLASSIFICATION TESTING
  - 2" DRAIN
  - MOTOR WEATHER COVER
  - FULLY SEALED SCROLL HOUSING
  - SCROLL ACCESS DOOR
  - FLANGE 1 1/4" – 11 THRU 20

- OPTIONS**
- UTILITY SET GREASE CUP.
  - BI – DISCHARGE ORIENTATION VERTICAL UPPER LEFT – CW INLET SIDE.
  - CURB MOUNTED SLED FOR USBI 11. USED TO MOUNT ON 41" L X 27" W CURB.
  - BI11 – RAIN CAP ASSEMBLY.
  - BI11 – INLET RING USED TO CONNECT NON-FACTORY DUCT.
  - BLUE RUBBER VIBRATION ISOLATORS FOR BI UTILITY SETS (SET OF 4).
  - 2 YEAR PARTS WARRANTY.

REVISIONS

DESCRIPTION	DATE:
Δ	
Δ	
Δ	
Δ	

www.captiveair.com  
reg20@captiveair.com

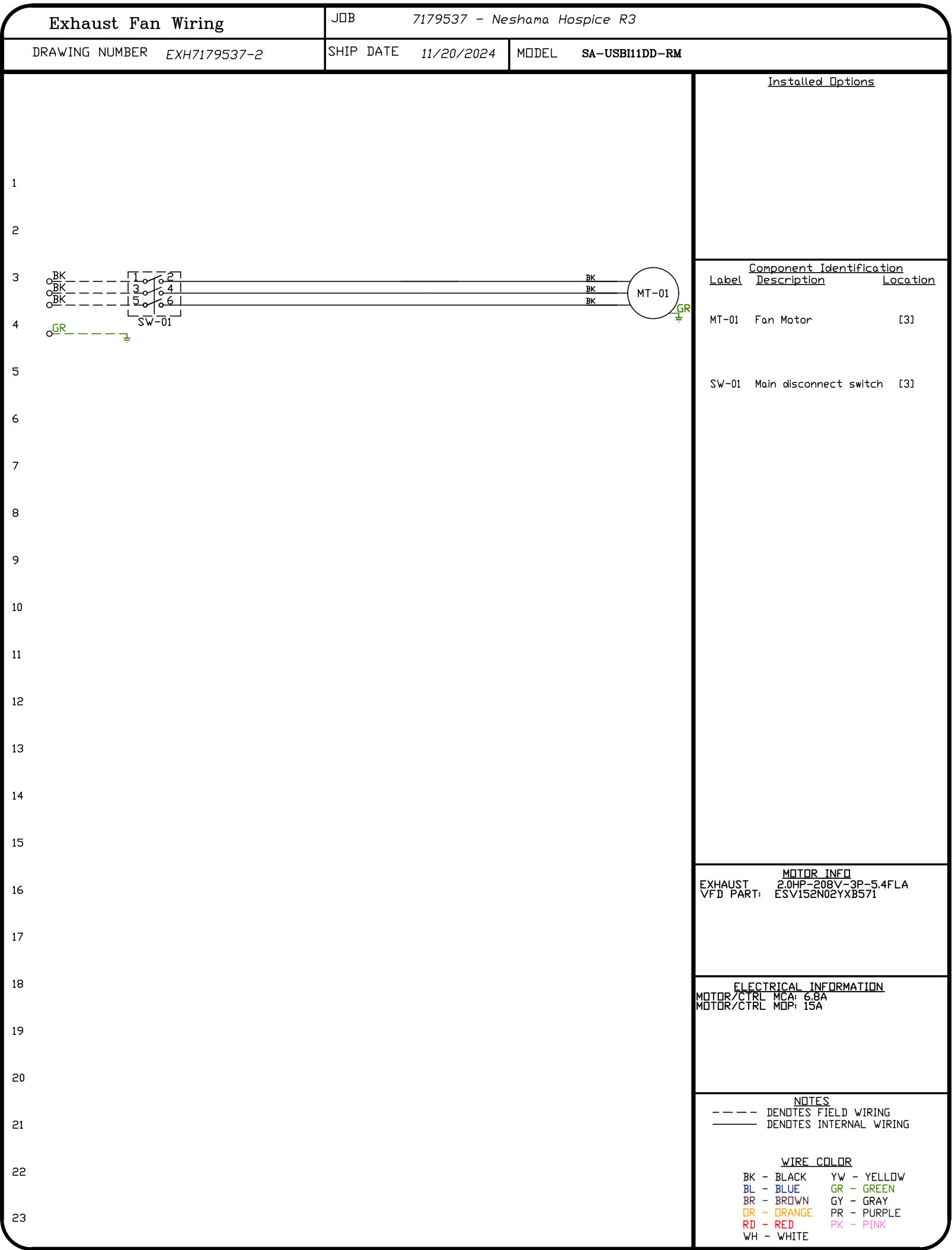
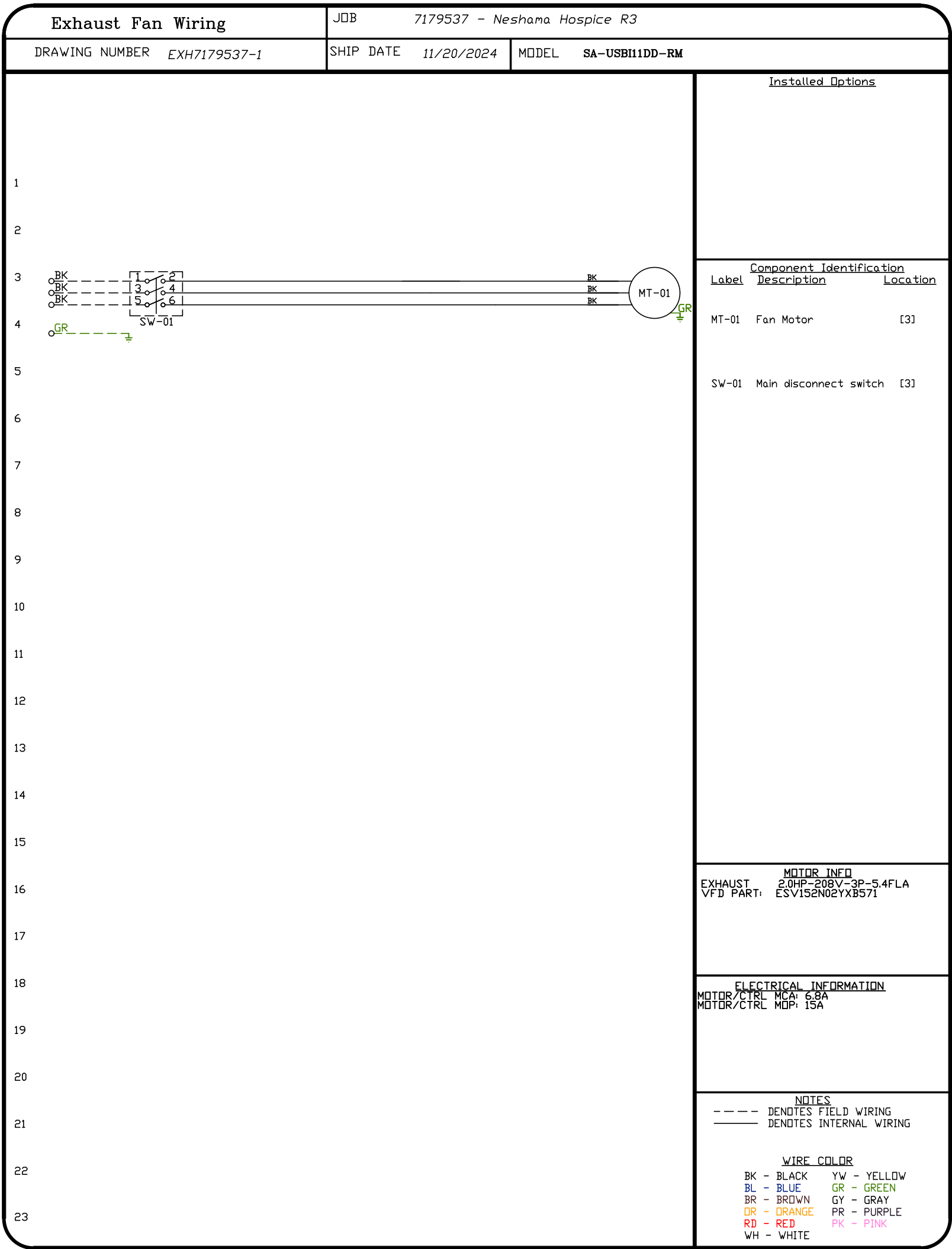
International Sales Office  
4444 Eastgate Parkway, Unit #20, Mississauga, ON, L4W 4T6 PHONE: (647) 977 - 2217 FAX: 9192275905 EMAIL: reg20@captiveair.com

Neshama Hospice R3  
25 Brightwood Street,  
Toronto, ON, M3H 2Z7

DATE: 11/20/2024  
DWG.#: 7179537  
DRAWN BY: Ryan Fung  
SCALE: 3/4" = 1'-0"  
MASTER DRAWING

SHEET NO.  
3





REVISIONS

DESCRIPTION	DATE:
△	
△	
△	
△	

CAPTIVE

International Sales Office

4444 Eastgate Parkway, Unit #20, Mississauga, ON, L4W 4T6 PHONE: (647) 977 - 2217 FAX: 9192275905 EMAIL: reg20@captivewire.com

www.captivewire.com

reg20@captivewire.com

Neshama Hospice R3

25 Brightwood Street,

Toronto, ON, M3H 2Z7

DATE: 11/20/2024

DWG.#: 7179537

DRAWN BY: Ryan Fung

SCALE: 3/4" = 1'-0"

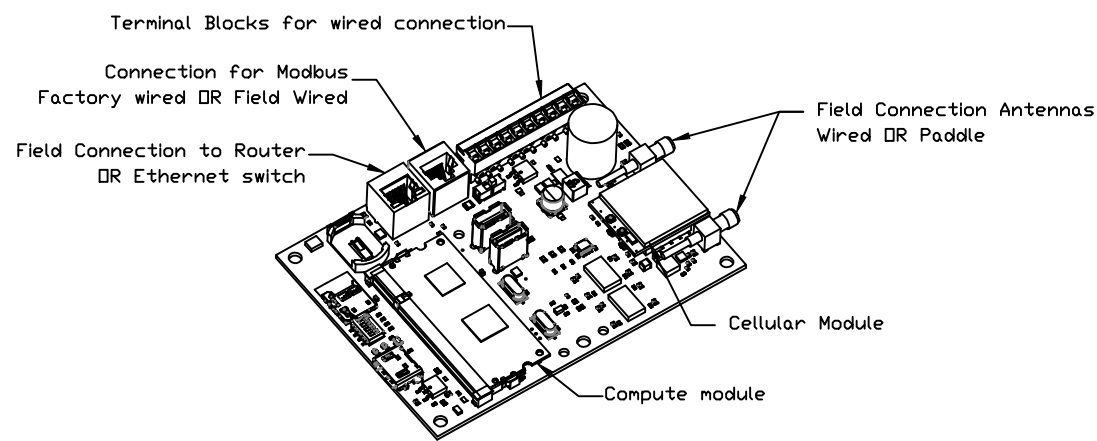
MASTER DRAWING

SHEET NO.

4

ELECTRICAL PACKAGE – JOB#7179537

NO	TAG	PACKAGE #	LOCATION	SWITCHES		OPTION	FANS CONTROLLED				
				LOCATION	QUANTITY		FAN TAG	TYPE	Ø	HP	VOLT FLA
1		SC-310110MA	WALL MOUNT IN SS BOX	SS WALL MOUNT BOX	1 LIGHT 1 FAN	SMART CONTROLS THERMOSTATIC CONTROL W/ RELAY ON/OFF WITH SUPPLY	KEF-1	EXHAUST	3	2.000	208 5.4
2		SC-310110MA	WALL MOUNT IN SS BOX	SS WALL MOUNT BOX	1 LIGHT 1 FAN	SMART CONTROLS THERMOSTATIC CONTROL W/ RELAY ON/OFF WITH SUPPLY	KEF-2	EXHAUST	3	2.000	208 5.4

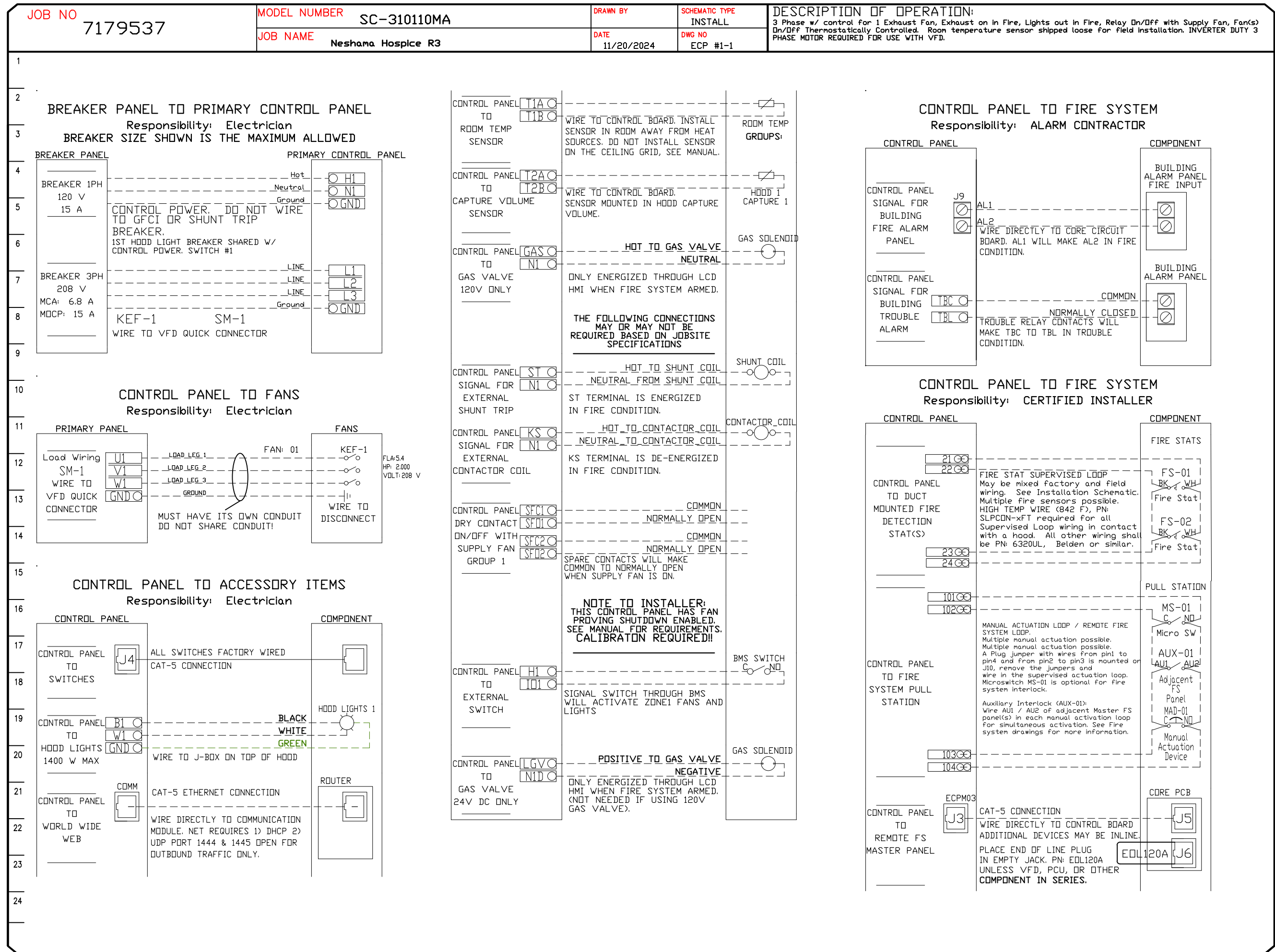


CASlink Monitor and Control

- Hood control panel to support communications to cloud-based Building Management System.
- Hood Control Panel to allow cloud-based Building Management System to monitor real time parameters outlined as MONITOR in the points list.
- Hood Control Panel to allow cloud-based Building Management System to control parameters outlined as CONTROL in the points list.
- Hood Control Panel to allow cloud-based Building Management System to implement SYSTEM ECONOMIZER control strategies for fully integrated Building Management.

MONITORING AND CONTROL POINTS LIST

DCV Packages	Function	SC Packages	Function
Room Temperature	MONITOR	Room Temperature(s)	MONITOR
Duct Temperature(s)	MONITOR	Duct Temperature(s)	MONITOR
MUA Discharge Temperature	MONITOR	MUA Discharge Temperature	MONITOR
Kitchen RTU Discharge Temperature	MONITOR	Kitchen RTU Discharge Temperature	MONITOR
Fan Speed	MONITOR	Controller Faults	MONITOR
Fan Amperage	MONITOR	Fan Faults	MONITOR
Fan Power	MONITOR	Fan Status	MONITOR
VFD Faults	MONITOR	PCU Faults	MONITOR
Controller Faults	MONITOR	PCU Filter Clog Percentages	MONITOR
Fan Faults	MONITOR	Fire Condition	MONITOR
Fan Status	MONITOR	CORE Fire System	MONITOR
PCU Faults	MONITOR	Building Pressures	MONITOR
PCU Filter Clog Percentages	MONITOR	Fans Button(s)	MONITOR & CONTROL
Fire Condition	MONITOR	Lights Button(s)	MONITOR & CONTROL
CORE Fire System	MONITOR	Wash Button	MONITOR & CONTROL
Building Pressures	MONITOR		
Prep Time Button	MONITOR & CONTROL		
Fans Button	MONITOR & CONTROL		
Lights Button	MONITOR & CONTROL		
Wash Button	MONITOR & CONTROL		



REVISIONS

DESCRIPTION	DATE:
Δ	
Δ	
Δ	
Δ	
Δ	

CAPTIVE

International Sales Office

4444 Eastgate Parkway, Unit #20, Mississauga, ON, L4W 4T6 PHONE: (647) 977 - 2217 FAX: 9192775905 EMAIL: reg20@captiveaire.com

Neshama Hospice R3

25 Brightwood Street,

Toronto, ON, M3H 2Z7

DATE: 11/20/2024

DWG.#: 7179537

DRAWN BY: Ryan Fung

SCALE: 3/4" = 1'-0"

MASTER DRAWING

SHEET NO.

5

<div> <div>JOB NO</div> <div>7179537</div> </div>	<div> <div>MODEL NUMBER</div> <div>SC-310110MA</div> </div> <div> <div>JOB NAME</div> <div>Neshana Hospice R3</div> </div>	<div> <div>DRAWN BY</div> <div>INSTALL</div> </div> <div> <div>DATE</div> <div>11/20/2024</div> </div>	<div> <div>SCHEMATIC TYPE</div> <div>INSTALL</div> </div> <div> <div>DWG NO</div> <div>ECP #1-2</div> </div>	<div> <div>DESCRIPTION OF OPERATION</div> <div>3 Phase w/ control for 1 Exhaust Fan, Exhaust on in Fire, Lights out in Fire, Relay On/Off with Supply Fan, Fan(s) On/Off Thermostatically Controlled, Room temperature sensor shipped loose for field installation, INVERTER DUTY 3 PHASE MOTOR REQUIRED FOR USE WITH VFD.</div> </div>
<div>1</div> <div>2</div> <div>3</div> <div>4</div> <div>5</div> <div>6</div> <div>7</div> <div>8</div> <div>9</div> <div>10</div> <div>11</div> <div>12</div> <div>13</div> <div>14</div> <div>15</div> <div>16</div> <div>17</div> <div>18</div> <div>19</div> <div>20</div> <div>21</div> <div>22</div> <div>23</div> <div>24</div>	<div> <div> <div>INTERLOCK NETWORK</div> <div> <div>CONTROL PANEL</div> <div> <div>CA</div> <div>CB</div> <div>CC</div> </div> </div> <div> <div>TO</div> <div>MASTER F'S</div> <div>PANEL</div> </div> </div> <div> <div>SHIELD</div> <div> <div>SHIELDED TWISTED PAIR</div> <div> <div>BLACK</div> <div>RED</div> </div> </div> <div> <div>WIRE TO LIKE TERMINALS IN ALL CORE PANELS THAT MUST ACTIVATE TOGETHER, SET MASTER &amp; SLAVE DIP SWITCHES PER FIRE SYSTEM MANUAL.</div> </div> </div> <div> <div>MASTER CORE</div> <div> <div>CA</div> <div>CB</div> <div>CC</div> </div> </div> </div>			

JOB NO <b>7179537</b>	MODEL NUMBER <b>SC-310110MA</b>	DRAWN BY <b>INSTALL</b>	DESCRIPTION OF OPERATION: <b>Fire System #1 TANK FS - 40.</b>
	JOB NAME <b>Neshoma Hospice R3</b>	DATE <b>11/20/2024</b>	SCHEMATIC TYPE <b>ECF #1-3</b>

## WALL MOUNT UTILITY CABINET TANK PROTECTION ELECTRICAL DETAIL


10/01/2023 Rev. 03

FS-1: MASTER

**ELECTRICIAN:**  
 WIRE MAIN CONTROL PANEL PER INCLUDED SCHEMATIC  
 WIRE ALL FANS PER INCLUDED SCHEMATIC  
 WIRE SHUNT TRIP BREAKER (OPTIONAL)  
 WIRE UDS APPLIANCE KILL SWITCH, IF EQUIPPED (OPTIONAL)  
 WIRE GAS VALVE

ELECTRICAL CONTRACTOR REQUIREMENT					
ITEM	CONNECTION IN PANEL	CONNECTION IN DEVICE	VOLTAGE	AMPERAGE	COMMENTS
SHUNT TRIP BREAKER (OPTIONAL)	ST & NI	BREAKER COIL (A1 & A2)	120 VAC	< 4 AMPS	ST TO A1 ON SHUNT BREAKER COIL, AND NEUTRAL TO A2 ON SHUNT TRIP BREAKER COIL
CONTROL PANEL POWER	H1 & N1 + GROUND	CIRCUIT BREAKER	120 VAC	15 AMPS	CONTROL PANEL POWER MUST NOT BE RUN THROUGH SHUNT TRIP BREAKER
UDS APPLIANCE KILL SWITCH (OPTIONAL)	KTS & NI	KTS & NI	120 VAC	< 4 AMPS	KILL SWITCH TERMINALS MUST BE IN SERIES WITH OTHER KILL SWITCHES
REMOTE 120VAC ANSUL AUTOMAN (OPTIONAL)	AU1, AU2	SOLENOID	120 VAC	< 6 AMPS	120V TO AU1, AU2 TO ANSUL ELECTRIC AUTOMAN, ANSUL SOLENOID TO NEUTRAL
GAS VALVE	LGV & NID (IF 24 VDC) GAS & NI (IF 120 VAC)	RED/RED/GREEN	24 VDC OR 120 VAC	< 10 AMPS	IF 24 VDC - 2 WIRES & GROUND, NID TO RED, LGV TO RED, AND GREEN TO GROUND IF 120 VAC - 2 WIRES & GROUND GAS TO RED, NI TO RED, AND GREEN TO GROUND

NOTE: SEE INSTALLATION, OPERATION, AND MAINTENANCE MANUAL FOR FURTHER INSTRUCTIONS

<div style="display: flex; justify-content: space-between;"> <div> <p><b>REVISIONS</b></p> <table border="1"> <thead> <tr> <th>DESCRIPTION</th> <th>DATE:</th> </tr> </thead> <tbody> <tr><td>△</td><td></td></tr> <tr><td>△</td><td></td></tr> <tr><td>△</td><td></td></tr> <tr><td>△</td><td></td></tr> <tr><td>△</td><td></td></tr> </tbody> </table> </div> <div>  <p><b>Capitve</b> International Sales Office</p> <p>4444 Eastgate Parkway, Unit #20, Mississauga, ON, L4W 4T6 PHONE: (647) 977-2217 FAX: 9192275905 EMAIL: <a href="mailto:reg20@capitveale.com">reg20@capitveale.com</a></p> <p><a href="http://www.capitveale.com">www.capitveale.com</a></p> </div> </div>		DESCRIPTION	DATE:	△		△		△		△		△	
DESCRIPTION	DATE:												
△													
△													
△													
△													
△													
<p>Neshama Hospice R3</p> <p>25 Brightwood Street,</p> <p>Toronto, ON, M3H 2Z7</p>	<p><b>DATE:</b> 11/20/2024</p> <p><b>DWG.#:</b> 7179537</p> <p><b>DRAWN BY:</b> Ryan Fung</p> <p><b>SCALE:</b> 3/4" = 1'-0"</p> <p><b>MASTER DRAWING</b></p>												
<p><b>SHEET NO.</b></p> <p>6</p>													



JOB NO  
7179537

MODEL NUMBER  
SC-310110MA

DATE  
11/20/2024

DWG NO  
ECP #1-4

DESCRIPTION OF OPERATION  
Fire System #1 TANK FS - 4.0

10/01/2023 Rev. 3

FS-1: MASTER

WALL MOUNT UTILITY CABINET TANK PROTECTION LOW-VOLTAGE DETAIL

ALARM CONTRACTOR REQUIREMENT

ITEM	CONNECTION IN PANEL	CONNECTION ON DEVICE	VOLTAGE	AMPERAGE	COMMENTS
MANUAL ACTUATION DEVICE(S)	101 AND 104 102 AND 103	1 & 2	24 VDC	< 1.0 AMPS	WIRE MANUAL ACTUATION DEVICE TERMINAL 1 BETWEEN CORE PANEL TERMINALS 102 AND 103 WIRE MANUAL ACTUATION DEVICE TERMINAL 2 BETWEEN CORE PANEL TERMINALS 101 AND 104 JUMPER 101 TO 104 AND 102 TO 103 IF NO MANUAL ACTUATION DEVICE IS INSTALLED
MANUAL ACTUATION DEVICE COVER	N/A	N/A	N/A	N/A	MANUAL ACTUATION DEVICE COVER MUST BE INSTALLED IF SURFACE MOUNTED, USE COVER EXTENSION ST1-655018
REMOTE FIRESTAT SENSOR(S)	21 AND 24 22 AND 23	BLACK AND WHITE	24 VDC	< 1.0 AMPS	WIRE FIRE SENSOR WHITE WIRES BETWEEN HOOD CORE PANEL TERMINALS 22 AND 23 WIRE FIRE SENSOR BLACK WIRE BETWEEN HOOD CORE PANEL TERMINALS 21 AND 24 HIGH TEMP (842°F) #4468002FES (WHT) & #4468002FES (BLK) WIRE OR SIMILAR ONLY IF RAN OF HOOD; OTHERWISE BELDEN #6320UL OR SIMILAR PLENUM RATED WIRE, SEE FIGURE 1
FIRE ALARM CONTACT	AL1, AL2	VARIES	50V MAX (AC/DC)	UP TO 1 AMP	FIRE ALARM RELAY CONTACTS FOR BUILDING FIRE ALARM LOCATED IN THE CORE ELECTRICAL CONTROL PANEL
CORE INTERLOCK(S)	CA, CB, CC	CA, CB, CC	RS-485 COMMUNICATIONS SIGNAL	UP TO 6 AMPS	CORE SYSTEM (1) CA, TO CORE SYSTEM (2) CB, TO CORE SYSTEM (2) CB CORE SYSTEM (1) CC, TO CORE SYSTEM (2) CC, USE BELDEN# 88760 OR SIMILAR WIRE
TROUBLE CONTACT	TBC, TBL, TDK	VARIES	MAX 120 VAC		WIRE TO TBL & TBC NORMALLY OPEN CONTACT, CLOSSES IN TROUBLE CONDITION
CORE COMMUNICATIONS CABLE	RJ-45 Jack	INTERNET CONNECTION	SIGNAL	<1.0 AMPS	TYPICAL CONNECTION CAT5 CABLE TO LOCAL AREA NETWORK VIA ETHERNET SWITCH OR WIRELESS ROUTER WITH VALID INTERNET CONNECTION

EXHAUST HOOD

ELECTRIC

GAS

COOKING APPLIANCE(S)

MANUAL ACTUATION DEVICE

42 TO 48 INCHES ABOVE FLOOR LEVEL TO CENTER OF PUSH STATION

36 INCHES CLEARANCE REQUIRED IN FRONT OF ALL UTILITY CABINET DOORS THE PANEL SHALL ALSO BE LOCATED IN AN ACCESSIBLE AREA WHERE THE AUDIBLE AND VISUAL ALARMS CAN BE HEARD AND SEEN

WIRING CONNECTIONS FOR FIRESTAT LOOP  
FIGURE 1

WIRING CONNECTIONS FOR MANUAL ACTUATION LOOP  
FIGURE 1A

WIRING CONNECTIONS FOR TROUBLE CONTACT  
FIGURE 4

WIRING CONNECTIONS FOR CORE INTERLOCK  
FIGURE 3

WIRING CONNECTIONS FOR FIRE ALARM CONTACT  
FIGURE 2

WIRING CONNECTIONS FOR FIRE ALARM CONTACT  
FIGURE 2

ATTENTION: LOW-VOLTAGE DC OR SIGNALING WIRE SHOULD BE ROUTED IN SEPARATE CONDUIT FROM ALL AC SOURCES

NOTE: SEE INSTALLATION, OPERATION, AND MAINTENANCE MANUAL FOR FURTHER INSTRUCTIONS

10/01/2023 Rev. 17

FS-1: MASTER

TOTAL PROTECTION LOW-VOLTAGE FIGURES

WIRING CONNECTIONS FOR FIRESTAT LOOP  
FIGURE 1

WIRING CONNECTIONS FOR MANUAL ACTUATION LOOP  
FIGURE 1A

WIRING CONNECTIONS FOR TROUBLE CONTACT  
FIGURE 4

WIRING CONNECTIONS FOR CORE INTERLOCK  
FIGURE 3

WIRING CONNECTIONS FOR FIRE ALARM CONTACT  
FIGURE 2

NOTE: SEE INSTALLATION, OPERATION, AND MAINTENANCE MANUAL FOR FURTHER INSTRUCTIONS

ATTENTION: LOW-VOLTAGE DC OR SIGNALING WIRE SHOULD BE ROUTED IN SEPARATE CONDUIT FROM ALL AC SOURCES

REVISIONS

DESCRIPTION	DATE:
Δ	
Δ	
Δ	
Δ	
Δ	

www.captiveair.com

reg20@captiveair.com

International Sales Office

4444 Eastgate Parkway, Unit #20, Mississauga, ON, L4W 4T6 PHONE: (647) 977 - 2217 FAX: 919275905

Neshama Hospice R3

25 Brightwood Street,

Toronto, ON, M3H 2Z7

DATE: 11/20/2024

DWG.#: 7179537

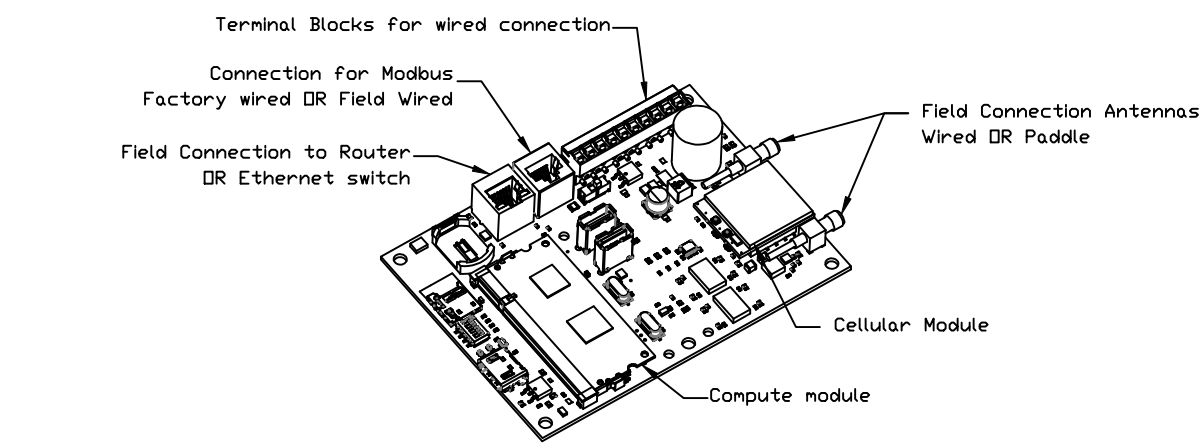
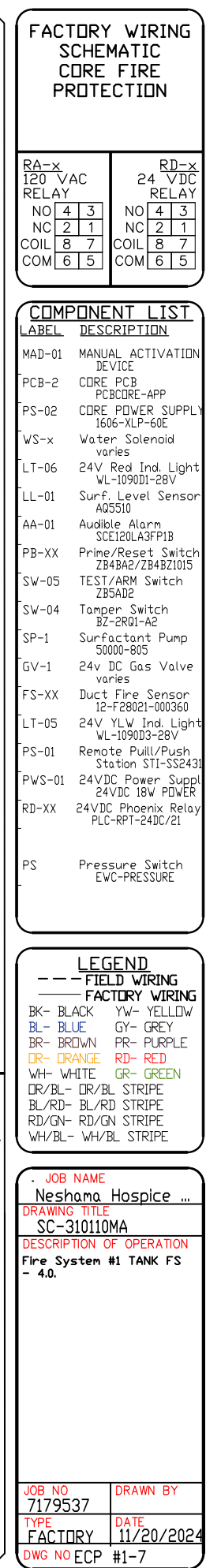
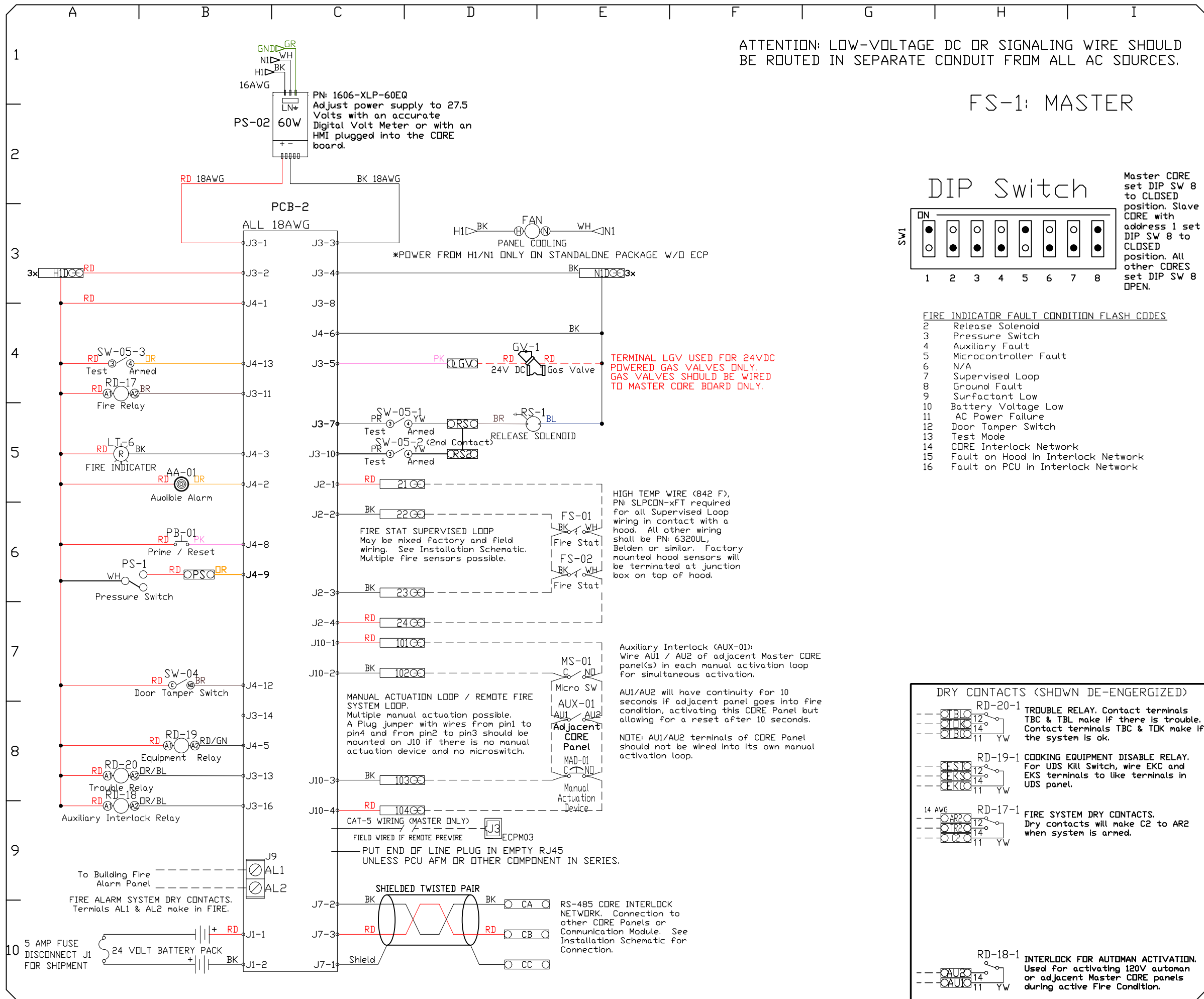
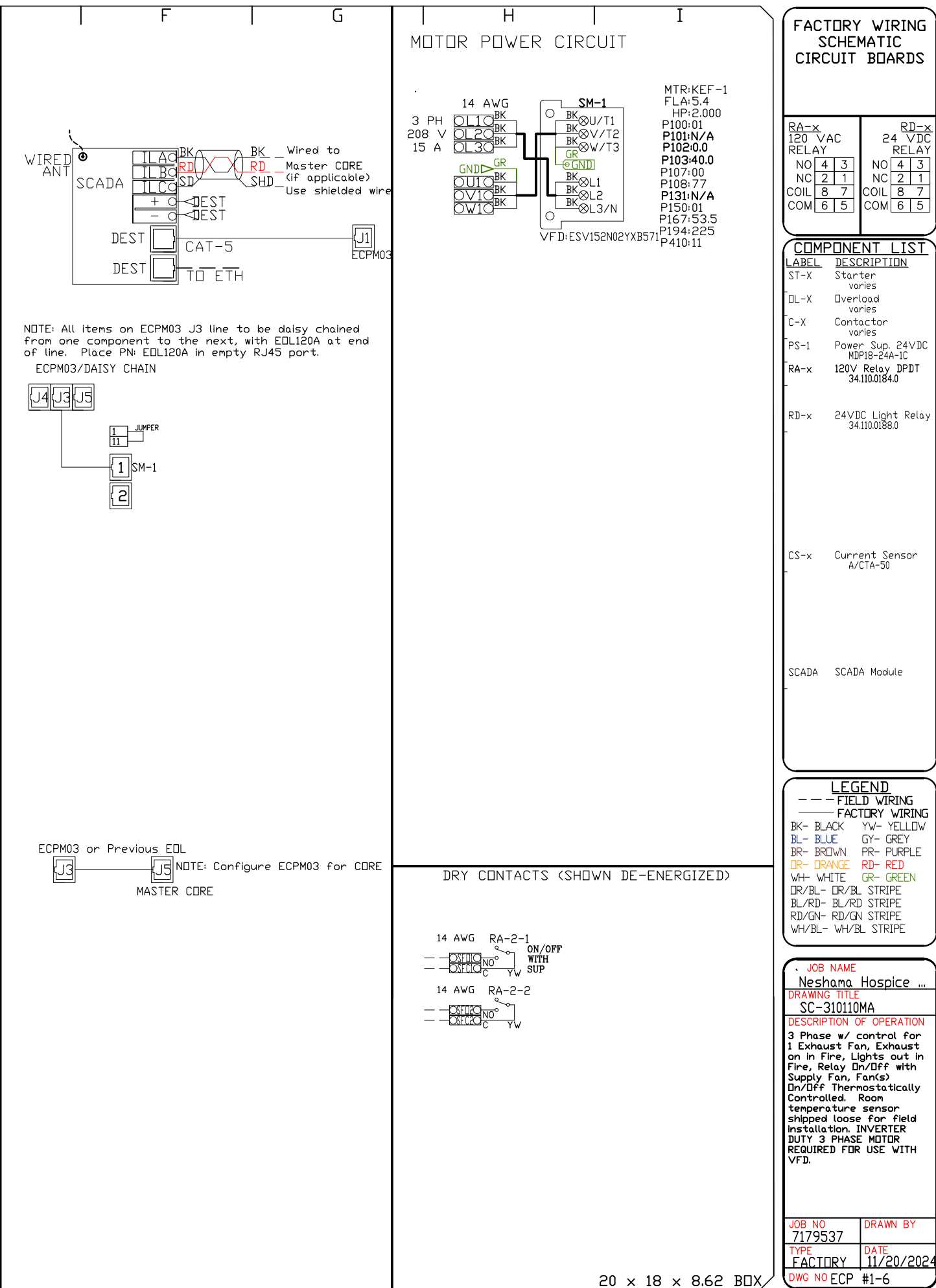
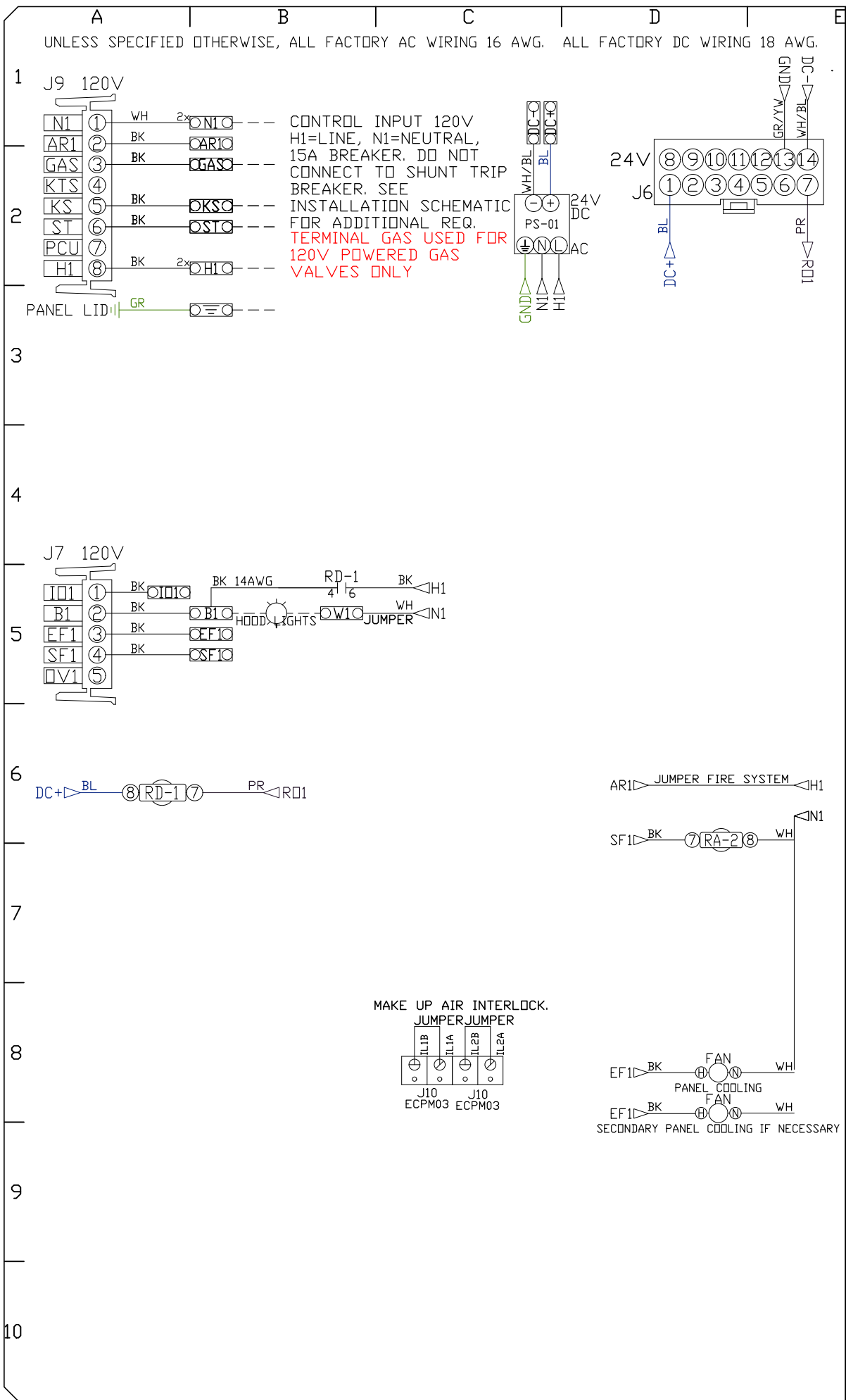
DRAWN BY: Ryan Fung

SCALE: 3/4" = 1'-0"

MASTER DRAWING

SHEET NO.

7



CASlink Monitor and Control

- Hood control panel to support communications to cloud-based Building Management System.
- Hood Control Panel to allow cloud-based Building Management System to monitor real time parameters outlined as MONITOR in the points list.
- Hood Control Panel to allow cloud-based Building Management System to control parameters outlined as CONTROL in the points list.
- Hood Control Panel to allow cloud-based Building Management System to implement SYSTEM ECONOMIZER control strategies for fully integrated Building Management.

MONITORING AND CONTROL POINTS LIST

DCV Packages	Function	SC Packages	Function
Room Temperature	MONITOR	Room Temperature(s)	MONITOR
Duct Temperature(s)	MONITOR	Duct Temperature(s)	MONITOR
MUA Discharge Temperature	MONITOR	MUA Discharge Temperature	MONITOR
Kitchen RTU Discharge Temperature	MONITOR	Kitchen RTU Discharge Temperature	MONITOR
Fan Speed	MONITOR	Controller Faults	MONITOR
Fan Amperage	MONITOR	Fan Faults	MONITOR
Fan Power	MONITOR	Fan Status	MONITOR
VFD Faults	MONITOR	PCU Faults	MONITOR
Controller Faults	MONITOR	PCU Filter Clog Percentages	MONITOR
Fan Faults	MONITOR	Fire Condition	MONITOR
Fan Status	MONITOR	CORE Fire System	MONITOR
PCU Faults	MONITOR	Building Pressures	MONITOR
PCU Filter Clog Percentages	MONITOR	Fans Button(s)	MONITOR & CONTROL
Fire Condition	MONITOR	Lights Button(s)	MONITOR & CONTROL
CORE Fire System	MONITOR	Wash Button	MONITOR & CONTROL
Building Pressures	MONITOR		
Prep Time Button	MONITOR & CONTROL		
Fans Button	MONITOR & CONTROL		
Lights Button	MONITOR & CONTROL		
Wash Button	MONITOR & CONTROL		

Neshama Hospice R3  
25 Brightwood Street,  
Toronto, ON, M3H 2Z7

DATE: 11/20/2024

DWG.#:  
7179537

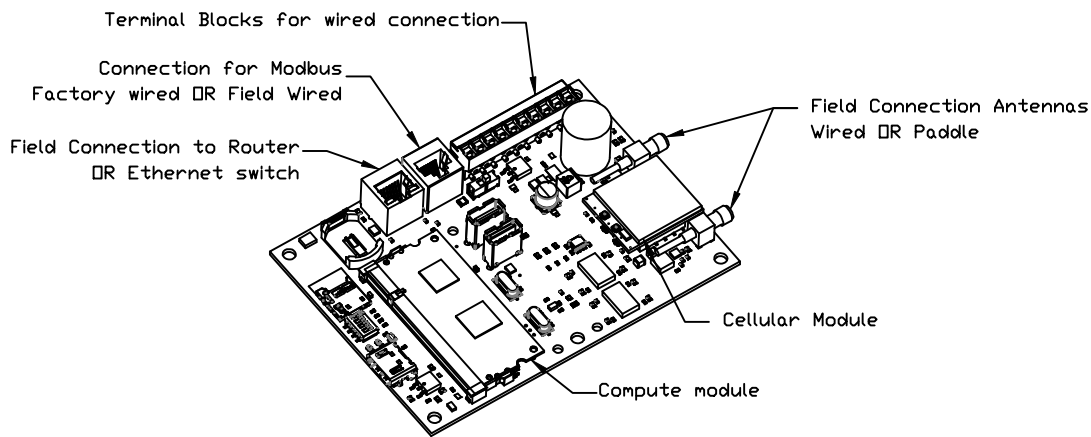
DRAWN BY: Ryan Fung

SCALE:  
3/4" = 1'-0"

MASTER DRAWING

SHEET NO.  
8



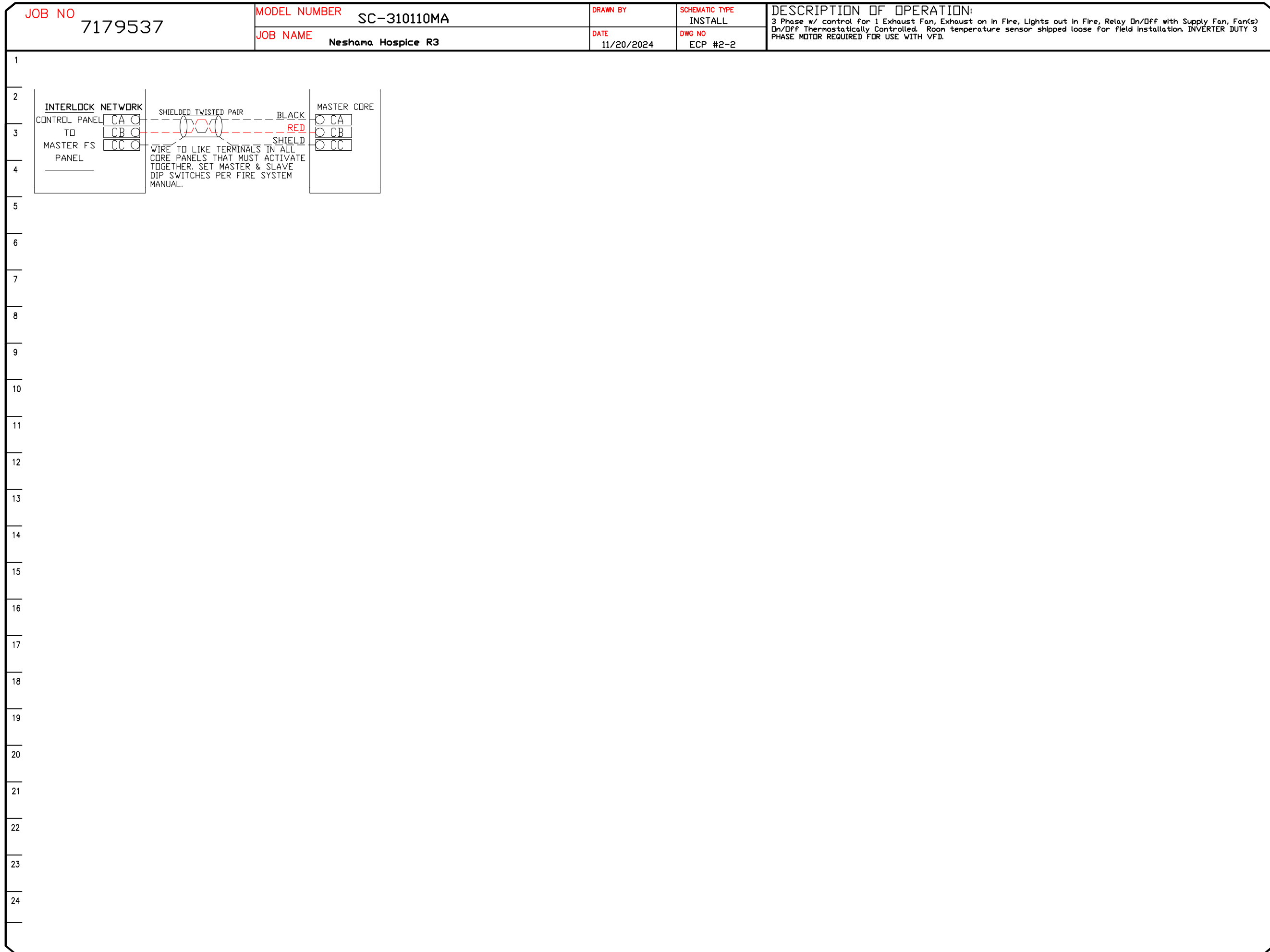
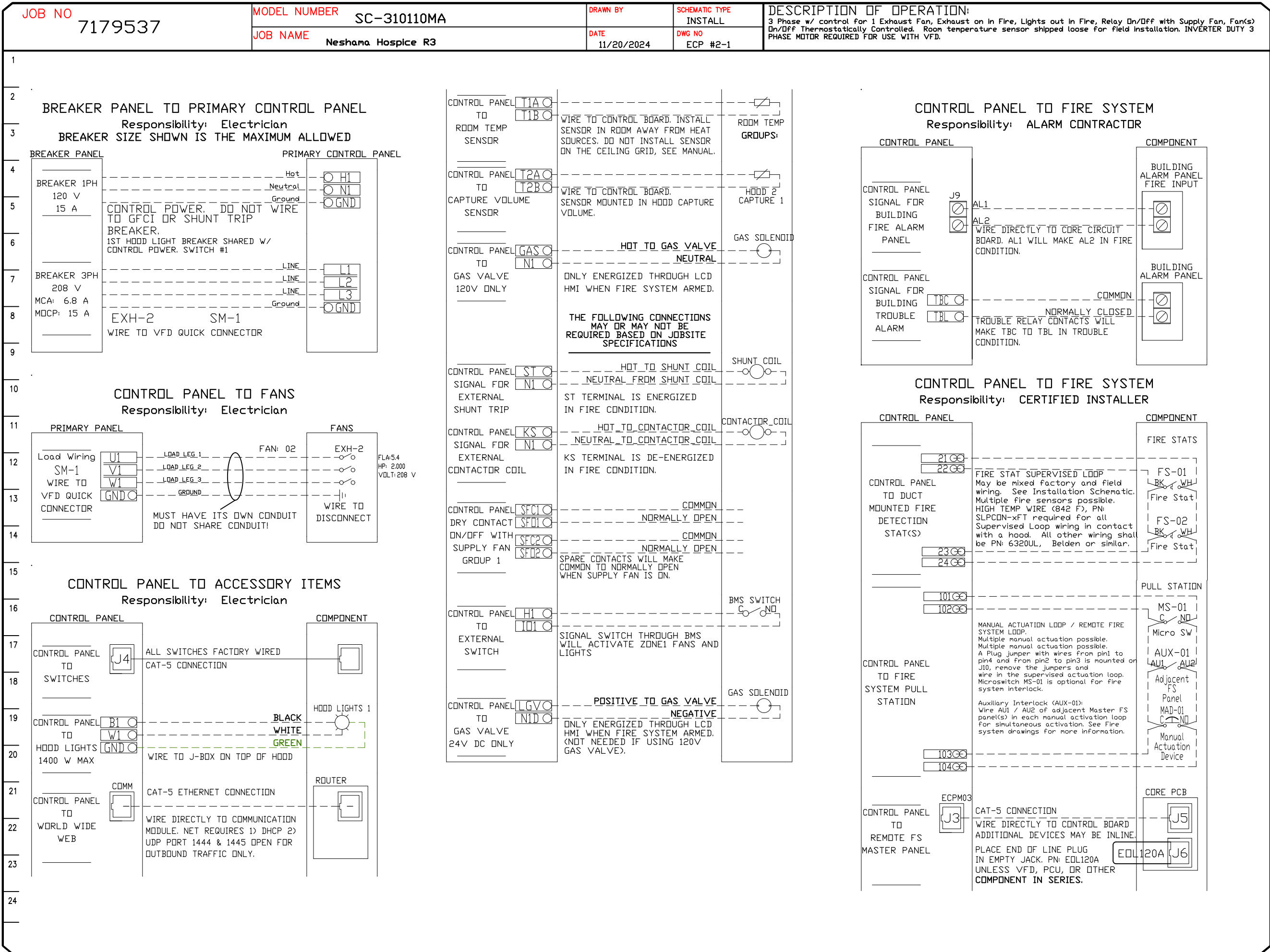


### CASlink Monitor and Control

- Hood control panel to support communications to cloud-based Building Management System.
- Hood Control Panel to allow cloud-based Building Management System to monitor real time parameters outlined as MONITOR in the points list.
- Hood Control Panel to allow cloud-based Building Management System to control parameters outlined as CONTROL in the points list.
- Hood Control Panel to allow cloud-based Building Management System to implement SYSTEM ECONOMIZER control strategies for fully integrated Building Management.

### MONITORING AND CONTROL POINTS LIST

DCV Packages	Function	SC Packages	Function
Room Temperature	MONITOR	Room Temperature(s)	MONITOR
Duct Temperature(s)	MONITOR	Duct Temperature(s)	MONITOR
MUA Discharge Temperature	MONITOR	MUA Discharge Temperature	MONITOR
Kitchen RTU Discharge Temperature	MONITOR	Kitchen RTU Discharge Temperature	MONITOR
Fan Speed	MONITOR	Controller Faults	MONITOR
Fan Amperage	MONITOR	Fan Faults	MONITOR
Fan Power	MONITOR	Fan Status	MONITOR
VFD Faults	MONITOR	PCU Faults	MONITOR
Controller Faults	MONITOR	PCU Filter Clog Percentages	MONITOR
Fan Faults	MONITOR	Fire Condition	MONITOR
Fan Status	MONITOR	CORE Fire System	MONITOR
PCU Faults	MONITOR	Building Pressures	MONITOR
PCU Filter Clog Percentages	MONITOR	Fans Button(s)	MONITOR & CONTROL
Fire Condition	MONITOR	Lights Button(s)	MONITOR & CONTROL
CORE Fire System	MONITOR	Wash Button	MONITOR & CONTROL
Building Pressures	MONITOR		
Prep Time Button	MONITOR & CONTROL		
Fans Button	MONITOR & CONTROL		
Lights Button	MONITOR & CONTROL		
Wash Button	MONITOR & CONTROL		



REVISIONS

DESCRIPTION	DATE:

www.captiveair.com

International Sales Office

4444 Eastgate Parkway, Unit #20, Mississauga, ON, L4W 4T6 PHONE: (647) 977 - 2217 FAX: 919275505 EMAIL: reg20@captiveair.com

Neshama Hospice R3

25 Brightwood Street,

Toronto, ON, M3H 2Z7

DATE: 11/20/2024

DWG.#: 7179537

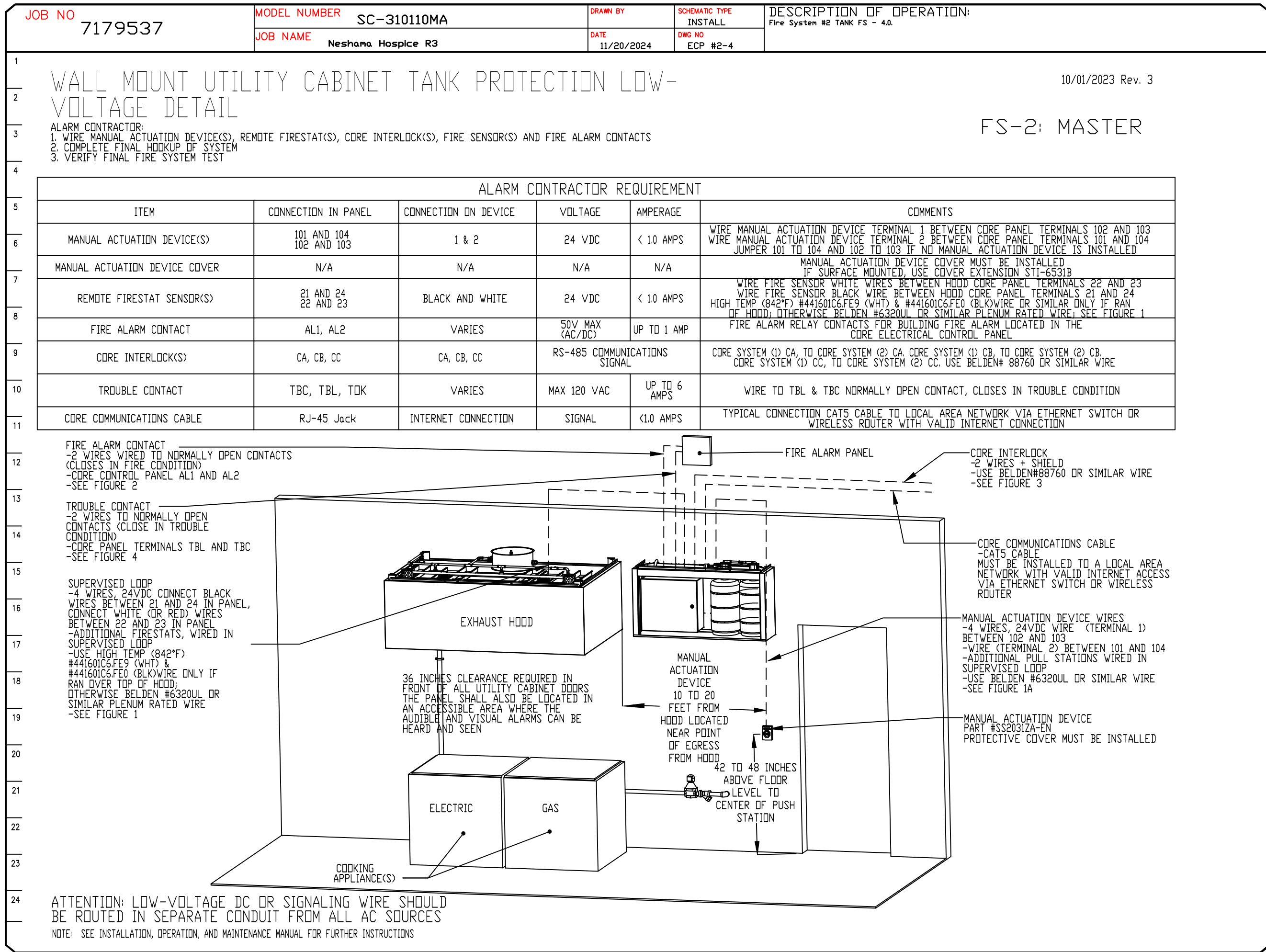
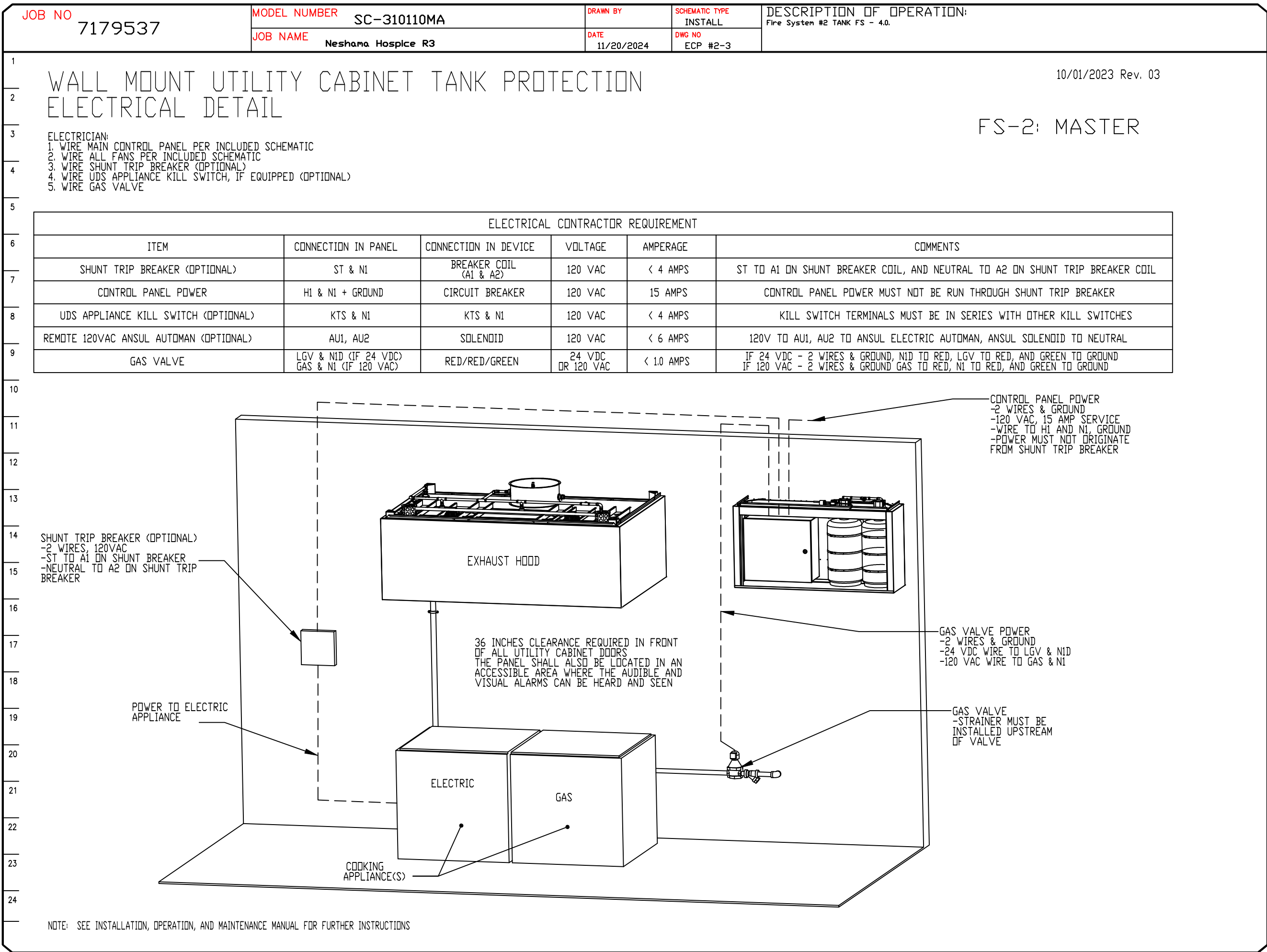
DRAWN BY: Ryan Fung

SCALE: 3/4" = 1'-0"

MASTER DRAWING

SHEET NO.

9



REVISIONS

DESCRIPTION	DATE:
Δ	
Δ	
Δ	
Δ	
Δ	

www.capitveire.com

reg20@capitveire.com

International Sales Office

4444 Eastgate Parkway, Unit #20, Mississauga, ON, L4W 4T6 PHONE: (647) 977 - 2217 FAX: 919275905

Neshama Hospice R3

25 Brightwood Street,

Toronto, ON, M3H 2Z7

DATE: 11/20/2024

DWG.#: 7179537

DRAWN BY: Ryan Fung

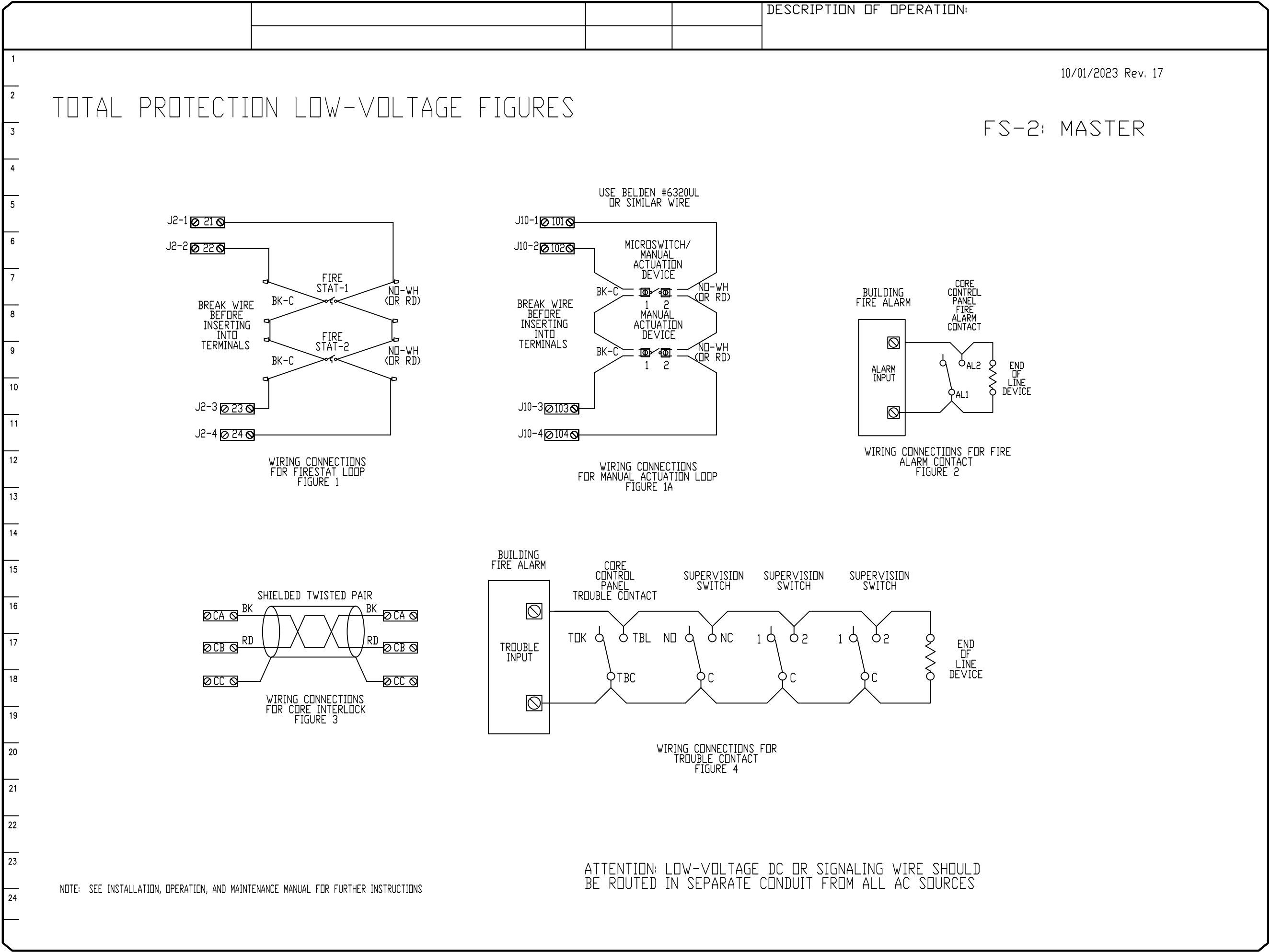
SCALE: 3/4" = 1'-0"

MASTER DRAWING

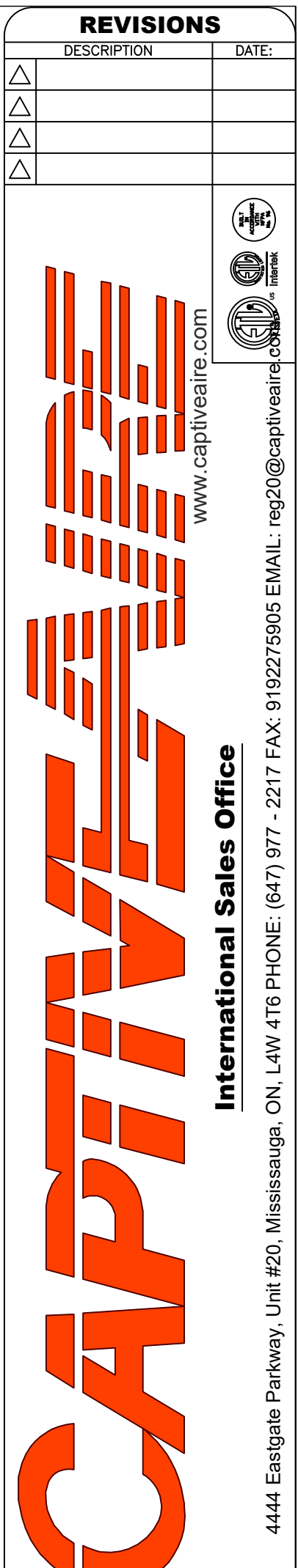
SHEET NO.

10









<b>DATE:</b> 11/20/2024
<b>DWG.#:</b> 7179537
<b>DRAWN BY:</b> Ryan Fung
<b>SCALE:</b> 3/4" = 1'-0"
<b>MASTER DRAWING</b>

**SHEET NO.**  
12

SYSTEM DESIGN VERIFICATION (SDV)

IF ORDERED, CAS SERVICE WILL PERFORM A SYSTEM DESIGN VERIFICATION (SDV) ONCE ALL EQUIPMENT HAS HAD A COMPLETE START UP PER THE OPERATION AND INSTALLATION MANUAL. TYPICALLY, THE SDV WILL BE PERFORMED AFTER ALL INSPECTIONS ARE COMPLETE.

ANY FIELD RELATED DISCREPANCIES THAT ARE DISCOVERED DURING THE SDV WILL BE BROUGHT TO THE ATTENTION OF THE GENERAL CONTRACTOR AND CORRESPONDING TRADES ON SITE. THESE ISSUES WILL BE DOCUMENTED AND FORWARDED TO THE APPROPRIATE SALES OFFICE. IF CAS SERVICE HAS TO RESOLVE A DISCREPANCY THAT IS A FIELD ISSUE, THE GENERAL CONTRACTOR WILL BE NOTIFIED AND BILLED FOR THE WORK. SHOULD A RETURN TRIP BE REQUIRED DUE TO ANY FIELD RELATED DISCREPANCY THAT CANNOT BE RESOLVED DURING THE SDV, THERE WILL BE ADDITIONAL TRIP CHARGES.

DURING THE SDV, CAS SERVICE WILL ADDRESS ANY DISCREPANCY THAT IS THE FAULT OF THE MANUFACTURER. SHOULD A RETURN TRIP BE REQUIRED, THE GENERAL CONTRACTOR AND APPROPRIATE SALES OFFICE WILL BE NOTIFIED. THERE WILL BE NO ADDITIONAL CHARGES FOR MANUFACTURER DISCREPANCIES.

REVISIONS

DESCRIPTION	DATE:
△	
△	
△	
△	



www.captiveaire.com

International Sales Office



4444 Eastgate Parkway, Unit #20, Mississauga, ON, L4W 4T6 PHONE: (647) 977 - 2217 FAX: 9192275905 EMAIL: reg20@captiveaire.com

Neshama Hospice R3  
25 Brightwood Street,  
Toronto, ON, M3H 2Z7

DATE: 11/20/2024

DWG.#:  
7179537

DRAWN  
BY: Ryan Fung

SCALE:  
3/4" = 1'-0"

MASTER DRAWING

SHEET NO.  
13