

Date of Issue: July 22, 2025**SI-23****Project:** Saverino Phase 1
556-560 Essa Road
Barrie ON L4N 9E6**Project No.:** 22-6229**Permit Number:** PMT20-01273**Prime Consultant:** McKnight Charron Limited (MCL) Architects**General Contractor:** Van Horne Construction Limited**Title:** *Parking Level Drainage Revision*

Site instructions are issued only for the purpose of recording any clarification or interpretation of the contract documents or giving direction on problems resulting from field conditions. These instructions are subject to the provisions of the contract documents and unless otherwise stated herein and specifically authorized by the *Owner*, will not affect the contract. If the *Contractor* believes this instruction affects the *Contract Price* or *Contract Time*, a *Contemplated Change Notice* must be requested and a change order authorized prior to the implementation of any work outlined herein.

Instruction

It is requested that the contractor undertake the work as described below in accordance with all applicable codes and standards. Ensure all updated drawings are reviewed, including General Notes and Scope of Work, these sections contain critical information the Contractor must be aware of prior to commencing the work.

Mechanical:

The following modifications are noted on attached drawings under revision number 17.

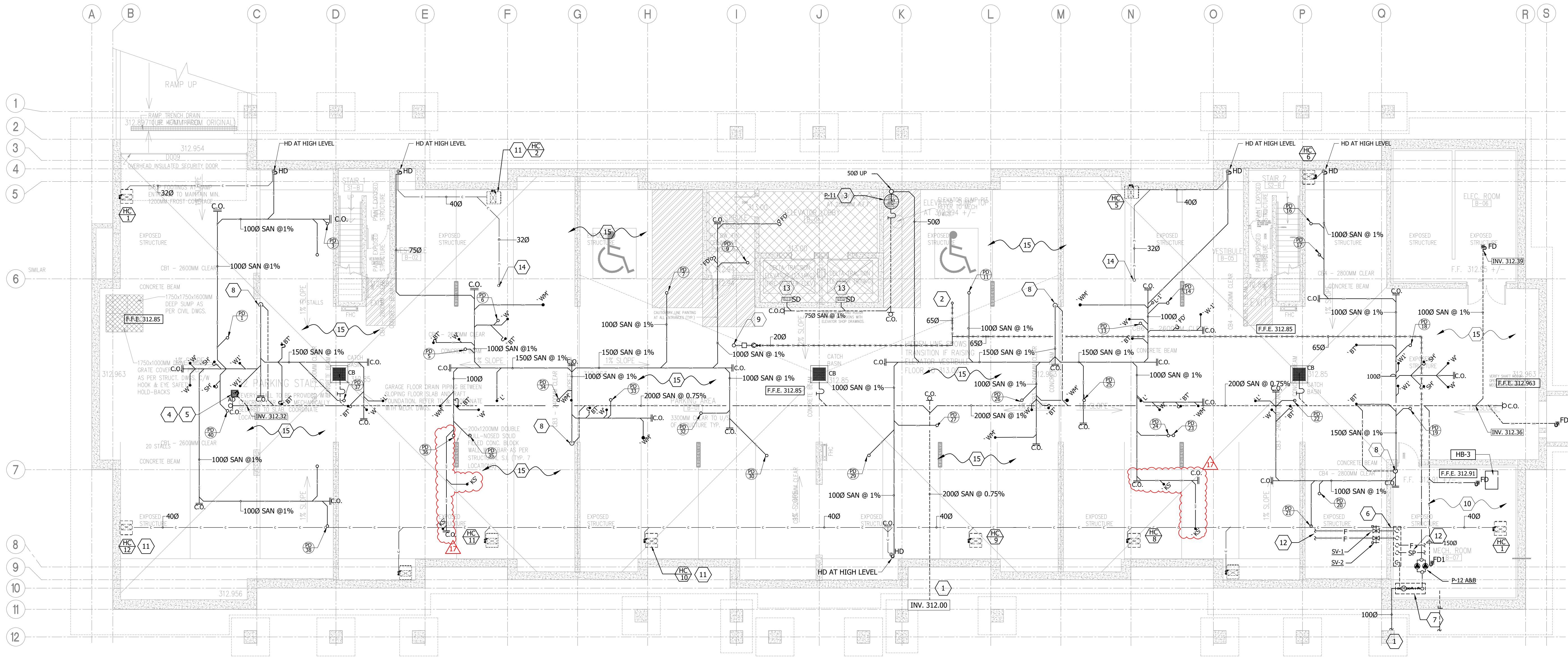
1. Install drainage pipes for fixtures from ground floor and connect to main sanitary pipe as shown on drawings PD-102.

Issued by;



Chris Langford, P.Eng.
EME Engineering, Inc.
President
chris@EMEeng.com

Attachments: PD-102



1 PARKING PLAN PLUMBING & DRAINAGE LAYOUT
Scale: 1:100

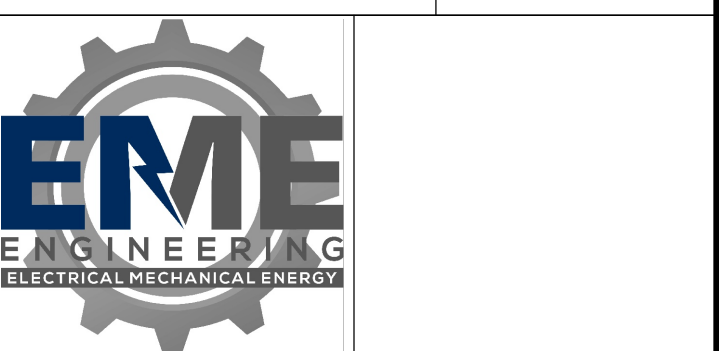
JUL 22/25	17	SI-23: PARKING LEVEL DRAINAGE REVISION	AK
JUL 09/25	16	SI-22: ADJUSTMENT TO SUIT CHASE WALL	AK
JUN 16/25	15	SI-20: ROOF DRAINS REVISION	AK
JUN 12/25	14	SI-15R2: SUITES REVISION	AK
MAY 01/25	-	ISSUED FOR COORDINATION	AK
MAY 01/25	13	SI-19: ROOF DRAINS REVISION	AK
APR 14/25	12	SI-18: PLUMBING RISERS FOR SUITES REVISION	AK
MAR 11/25	11	SI-15: SUITES REVISION	AK
JAN 16/25	10	SI-13: SUITES REVISION	AK
MAY 13/24	9	SI-8: FSD CHANGES	PD
MAY 07/24	8	SI-7: GENERATOR RELOCATION	PD
SEPT 07/23	-	SI-4: CHANGES BETWEEN JFP AND JFC	PD
MAY 24/23	-	ISSUED FOR CONSTRUCTION	PD
APR 17/23	6	RFI-52 PARKING HEATING PLENUM REMOVED	NN
APR 03/23	5	REVISED AS PER CITY COMMENTS	NN
MAR 24/23	4	REVISED AS PER CITY COMMENTS	EG
FEB 09/23	3	REVISED AS PER RFI#6	EG
SEP 01/22	2	REVISED AS PER CITY COMMENTS	JC
JUN 17/22	1	REISSUED AS PER CITY COMMENTS	EG
APR 26/22	-	ISSUED FOR PERMIT	MB

REVISIONS		
DATE	NO.	DESCRIPTION

CONTRACTOR MUST CHECK AND VERIFY ALL DIMENSIONS AND CONDITIONS IN THE FIELD AND REPORT ANY DISCREPANCIES TO THE ENGINEER PRIOR TO PROCEEDING WITH WORK.

THIS DRAWING IS THE PROPERTY OF THE ENGINEER AND MUST BE RETURNED UPON COMPLETION OF THE WORK. REPRODUCTION OF THIS DRAWING IS FORBIDDEN WITHOUT THE ENGINEER'S WRITTEN CONSENT.

DRAWINGS ARE PREPARED FOR PRINTING ON ARCH D PAPER (24"x36"). DRAWINGS ARE NOT TO BE SCALED.



Hubbert EME Engineering
90 WINGES ROAD, SUITE 201
VAUGHAN, ON L4L 6A9
TEL: (905) 851-5492
info@EMEng.com

67 HIGH STREET
BARRIE, ON L4N 1W5
TEL: (705) 735-1133

DRAWING TITLE		
PARKING LEVEL PLUMBING AND DRAINAGE		
DRAWN BY:	CHECKED BY:	SCALE:
MB	CL	1:100
DATE:	PROJECT NUMBER:	DRAWING NUMBER:
APR/2022	22-6229	PD-102

PARKING LEVEL PLUMBING AND DRAINAGE KEYNOTES	
1	FOR CONTINUATION AND EXACT LOCATION SEE SITE SERVICING AND GRADING PLAN PREPARED BY OTHERS.
2	650 DOMESTIC COLD WATER LINE UP.
3	600MM Ø x 600MM BELOW ELEVATOR PIT AND PUMP P-11, SEE DETAIL ON DWG M-116.
4	'AD' 12-3/4" x 12-3/4", 60" OUTLET AREA DRAIN EQUAL C/W SEDIMENT BUCKET.
5	APPROXIMATE LOCATION OF 'AD' PARKING GARAGE DRAIN. FOR EXACT LOCATION REFER TO SPRINKLER DWG. PREPARED BY OTHERS.
6	SPRINKLER STATION. FOR DETAIL REFER TO SPRINKLER DWG. PREPARED BY OTHERS.
7	650 WATER COMPOUND METER. REFER TO WATER METER DETAIL ON DWG. M-113.
8	SANITARY LINE DN. TO UNDER SIDE OF FLOOR SLAB
9	200 COLD WATER LINE UP. REFER TO CHUTE DETAIL ON DWG M-114.
10	FOR PIPING CONNECTIONS AND ARRANGEMENT REFER TO SCHEMATIC DWGS. M-111, M-112 AND M-113.
11	HEAT PUMP UNIT ABOVE. (TYPICAL)
12	FOR CONTINUATION REFER TO SPRINKLER DWG.
13	ANGLE PIT DRAIN WITH BACKWATER VALVE "MIFAB" MODEL BV210.
14	320 CONDENSATE DRAIN LINE UP.
15	ALL SANITARY 'P' TRAP, WATER LINES, AND CONDENSATE LINES RUNNING WITHIN UNHEATED PARKING GARAGE SHALL BE ELECTRICALLY HEAT TRACED AND INSULATED. ALL RECEPTACLES FOR PIPING HEAT TRACE BY DIV. 26
GENERAL NOTES: - REFER TO "PLUMBING FIXTURE CONNECTION SCHEDULE" FOR CONNECTION SIZES. - VENT ALL PLUMBING FIXTURES AS PER PROVINCIAL CODE. PROVIDE MIN 3" VENT SIZE AT ROOF TERMINATION. - PROVIDE BACKFLOW PREVENTER FOR KITCHEN EQUIPMENT AS REQUIRED BY PROVINCIAL CODE. - PROVIDE CLEANOUTS AND TRAP PRIMING FOR SANITARY DRAINAGE SYSTEM AS REQUIRED BY PROVINCIAL CODE - EXACT LOCATION OF EXISTING SERVICES TO BE VERIFIED ON SITE BY CONTRACTOR - ALL HOT AND COLD WATER PIPING TO BE INSULATED. - EXACT ELEVATIONS, INVERTS AND SLOPES OF SANITARY AND STORM LINES TO BE DETERMINED ON SITE BY MECH. CONTRACTOR. THIS MECH. CONTRACTOR SHALL CO-ORDINATE EXACT TERMINATION OF SERVICES WITH LOCATION SHOWN ON DRAWING.	