

## SHOP DRAWING TRANSMITTAL

To: Daniel Cusimano Architect Inc.  
185 Bridgeland Ave.  
Suite 107  
Toronto, ON M6A 1Y7

Att: Stacey Melville

Project: **Shopper's Drug Mart #1112**  
5050 Tecumseh Road East, Building 3  
Windsor, Ontario

From: Kyle McCallum  
Date: January 22, 2025  
File No: 7320.pt

---

We have reviewed the attached contractor's equipment shop drawings for general conformity with the design documents and are forwarding them to you for your use in association with the above noted project.

---

The documents are sent by: Courier • Hand • Pick-up • Facsimile • **E-Mail**

---

<u>Qty</u>	<u>Shop Drawings</u>	<u>Notes</u>
1	Floor Drains, Hub Drains, Trap Seal Primers, Trench Drain & Concealed Arms for Sinks (Zum)	Reviewed: Ensure 5'-0" trench drain length is being provided per mechanical drawings.  Ensure concealed arms are compatible with sinks.  Verify sizes (for floor drains/hub drains) & quantities prior to ordering (including quantities of distribution unit for trap seal primer).



54 Audia Court, Unit 2  
Concord, ON L4K 3N5  
(905)-738-1400

## Submittal

PROJECT NAME PROJECT ADDRESS DATE SUBMITTED  
SDM 1112 WINDSOR 24-283 5050 TECUMSEH RD EAST, BUILDING 3,  
WINDSOR, ONTARIO

TO FROM  
JEREMY DAVIS COMPANY  
COMPANY COMPANY  
LESTER CONSTRUCTION GROUP INC. EMAIL  
EMAIL EMAIL  
jeremy@lestergroup.ca ADDRESS  
ADDRESS  
3445 Wheelton Road, Unit 130, Windsor, Ontario N8W 5A6 54 Audia Court, Unit 2  
Concord, ON L4K 3N5

## Title


Drains, CO, TSP & Carriers

INTEGRATED ENGINEERING			
REVIEW OF THIS DRAWING IS FOR GENERAL CONFORMITY WITH THE DESIGN ONLY. THE CONTRACTOR IS RESPONSIBLE FOR ALL REQUIREMENTS OF THE INSTALLATION.			
PROJ No.	7320	REVIEWED	<input checked="" type="checkbox"/>
DATE	25.01.22	REVISED	<input type="checkbox"/>
BY	KJM	RESUBMIT	<input type="checkbox"/>

## Description

Items:  
FD: Z415-BZ1  
HD: Z415-BZ1 / Z329  
TSP: Z1022-XL (ALTERNATE EQUAL)  
CO: Z1454  
TD: ZS890  
HL: Z1231  
L: Z1231

SEE NOTES & COMMENTS  
ON TRANSMITTAL



REVIEWED AS TO GENERAL ARRANGEMENT AND LAYOUT ONLY. DIMENSIONS AND COMPLIANCE WITH CONTRACT DRAWINGS AND SPECIFICATIONS ARE THE RESPONSIBILITY OF THE SUBCONTRACTOR

REVIEWED STATUS: **Reviewed**

PROJECT NUMBER: **25820**

REVIEWED BY: **Jeremy Davis**

REVIEWED DATE: **Jan 15, 2025**



Shoppers Drug Mart #1112

**AM7128 - ZURN Drains SDP**



PREPARED BY: CARDINAL SALES

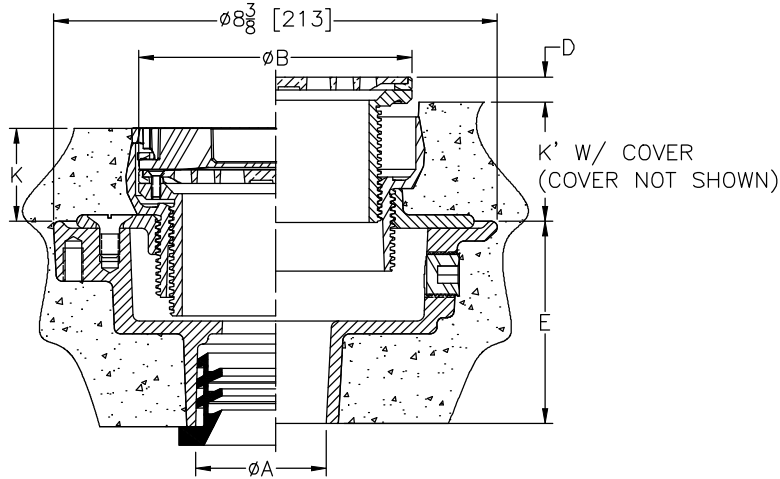


**Z415-BZ1** ← **FD**  
 BODY ASSEMBLY W/"TYPE B" STRAINER  
 and EZ1™ TECHNOLOGY

SPECIFICATION SHEET

TAG \_\_\_\_\_

Design and Dimensional Data (inches and [ mm ]) are Subject to Manufacturing Tolerances and Change Without Notice



Note:  
 Minimum K Dimension is only possible with -LR Option when using 6" [152] or 8" [203] Strainer

Dimensions In Inches								Approx. Wt. Lbs. [kg]	Strainer Open Area Sq. In [cm <sup>2</sup> ]
A Pipe Size	B Strainer Dia	D		K		K'			
		Min	Max	Min	Max	Min	Max		
2, 3 [51, 76]	5 [127]	0	1 [25]	1-25/32 [45]	2-31/32 [75]	2-9/32 [58]	3-15/32 [88]	16 [7]	6-1/4 [40]
2, 3, 4 [51, 76, 102]	6 [152]	0	1 [25]	1-13/16 [46]	3 [76]	2-5/16 [59]	3-1/2 [89]	19 [9]	9 [58]
3, 4 [76, 102]	8 [203]	0	31/32 [25]	2-5/32 [55]	3-11/32 [85]	2-21/32 [67]	3-27/32 [98]	24 [11]	20 [129]
6 [152]	8 [203]	0	31/32 [25]	2-5/32 [55]	3-11/32 [85]	2-21/32 [67]	3-27/32 [98]	26 [12]	20 [129]

**ENGINEERING SPECIFICATION:**

Zurn Z415-BZ1 floor and shower drain, Dura-coated cast iron body with bottom outlet, combination invertible membrane clamp and adjustable collar with seepage slots and top assembly. EZ1™ drainage series is engineered to simplify product installation, comprised of concrete shield, up to 1" [25] of vertical post pour adjustment, pre-packaged shims for tilt correction and integrated, self-contained "Type B" light duty, heel proof strainer with rough-in cover for protection during concrete pour.

**OPTIONS** (Check/specify appropriate options)

**PIPE SIZE**

- 2, 3, 4 [51, 76, 102]
- 2 [51]
- 3 [76]
- 4 [102]
- 6 [152]
- 2, 3, 4 [51, 76, 102]
- 2, 3, 4 [51, 76, 102]

(Specify size/type) **OUTLET**

- \_\_\_ -IC Inside Caulk
- \_\_\_ -IP Threaded
- \_\_\_ -IP Threaded
- \_\_\_ -IP Threaded
- \_\_\_ -IP Threaded
- \_\_\_ -IP Threaded
- \_\_\_ -NH No-Hub
- \_\_\_ -NL Neo-Loc

**'E' BODY HT. DIM.**

- 4-3/16 [106]
- 2-7/16 [62]
- 2-3/4 [70]
- 2-13/16 [71]
- 2-7/8 [73]
- 3-13/16 [97]
- 3-7/8 [98]

**PREFIXES**

- \_\_\_ ZB D.C.C.I. Body Assembly w/ Polished Bronze Top
- \_\_\_ ZN D.C.C.I. Body Assembly w/ Polished Nickel Bronze Top\*
- \_\_\_ ZS D.C.C.I. Body Assembly w/ Polished Stainless Steel Top

**SUFFIXES**

- \_\_\_ -AR Acid Resisting Epoxy Coated Cast Iron
- \_\_\_ -EF 3/4 [19] Extension Frame
- \_\_\_ -G Galvanized Cast Iron
- \_\_\_ -LR Low Rough-In (For 6 [152] and 8 [203] Strainers Only)
- \_\_\_ -P Trap Primer Connection (Specify 1/2" [13] or 3/4 [19])
- \_\_\_ -SA Stabilizer Assembly for Sub-Floor Install (See Z1035)
- \_\_\_ -SQ Stabilizer Assembly for Steel Decking Install (See Z1035-Q)
- \_\_\_ -SR Stabilizer Ring Assembly for On-Grade Install
- \_\_\_ -TC Neo-Loc Test Cap Gasket (2-3-4 [51-76-102] NL Outlet Only)
- \_\_\_ -TSP Trap Seal Protection Device (Size Matches Drain Outlet Selected) (See Z1072)
- \_\_\_ -U 2 - 3-1/4 [51-83] High Post-Pour Extension Adapter
- \_\_\_ -UP 1-3/4 [44] Pre-Pour Adjustment Extension Adapter
- \_\_\_ -VP Vandal-Proof Secured Top
- \_\_\_ -Y Sediment Bucket

\* Regularly furnished unless otherwise specified

**⚠ WARNING:** Cancer and Reproductive Harm - [www.P65Warnings.ca.gov](http://www.P65Warnings.ca.gov)

**⚠ ADVERTENCIA:** Cáncer y daño reproductivo - [www.P65Warnings.ca.gov](http://www.P65Warnings.ca.gov)

**⚠ AVERTISSEMENT:** Cancer et effets néfastes sur la reproduction - [www.P65Warnings.ca.gov](http://www.P65Warnings.ca.gov)

Zurn Industries, LLC | Specification Drainage Operation  
 1801 Pittsburgh Avenue, Erie, PA 16502, Ph. 855.663.9876

7900 Goreway Drive, Unit 10, Brampton, Ontario L6T 5W6, Ph. 877.892.5216

[www.zurn.com](http://www.zurn.com)

Rev. G  
 Date: 01/02/23  
 C.N. No. 144898  
 Patent [zurn.com/patents](http://zurn.com/patents)  
 Prod. | Dwg. No. Z415-BZ1

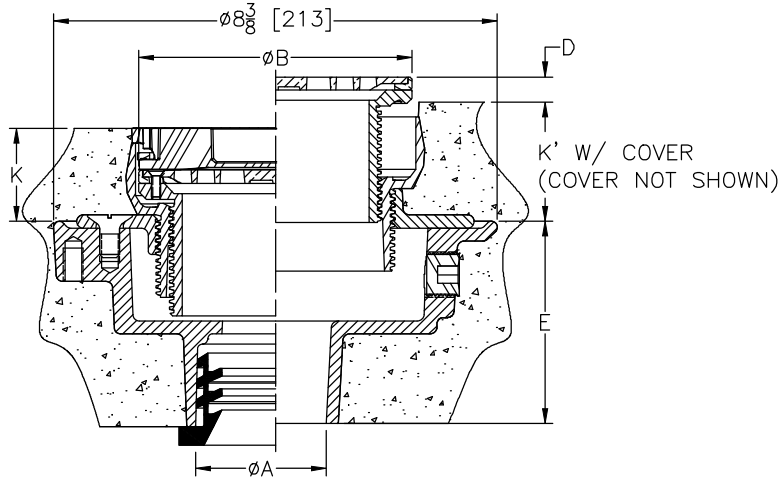


**Z415-BZ1** ← **HD**  
 BODY ASSEMBLY W/"TYPE B" STRAINER  
 and EZ1™ TECHNOLOGY

SPECIFICATION SHEET

TAG \_\_\_\_\_

Design and Dimensional Data (inches and [ mm ]) are Subject to Manufacturing Tolerances and Change Without Notice



Note:  
 Minimum K Dimension is only possible with -LR Option when using 6" [152] or 8" [203] Strainer

Dimensions In Inches								Approx. Wt. Lbs. [kg]	Strainer Open Area Sq. In [cm <sup>2</sup> ]
A Pipe Size	B Strainer Dia	D		K		K'			
		Min	Max	Min	Max	Min	Max		
2, 3 [51, 76]	5 [127]	0	1 [25]	1-25/32 [45]	2-31/32 [75]	2-9/32 [58]	3-15/32 [88]	16 [7]	6-1/4 [40]
2, 3, 4 [51, 76, 102]	6 [152]	0	1 [25]	1-13/16 [46]	3 [76]	2-5/16 [59]	3-1/2 [89]	19 [9]	9 [58]
3, 4 [76, 102]	8 [203]	0	31/32 [25]	2-5/32 [55]	3-11/32 [85]	2-21/32 [67]	3-27/32 [98]	24 [11]	20 [129]
6 [152]	8 [203]	0	31/32 [25]	2-5/32 [55]	3-11/32 [85]	2-21/32 [67]	3-27/32 [98]	26 [12]	20 [129]

**ENGINEERING SPECIFICATION:**

Zurn Z415-BZ1 floor and shower drain, Dura-coated cast iron body with bottom outlet, combination invertible membrane clamp and adjustable collar with seepage slots and top assembly. EZ1™ drainage series is engineered to simplify product installation, comprised of concrete shield, up to 1" [25] of vertical post pour adjustment, pre-packaged shims for tilt correction and integrated, self-contained "Type B" light duty, heel proof strainer with rough-in cover for protection during concrete pour.

**OPTIONS** (Check/specify appropriate options)

**PIPE SIZE**

- 2, 3, 4 [51, 76, 102]
- 2 [51]
- 3 [76]
- 4 [102]
- 6 [152]
- 2, 3, 4 [51, 76, 102]
- 2, 3, 4 [51, 76, 102]

(Specify size/type) **OUTLET**

- \_\_\_ -IC Inside Caulk
- \_\_\_ -IP Threaded
- \_\_\_ -IP Threaded
- \_\_\_ -IP Threaded
- \_\_\_ -IP Threaded
- \_\_\_ -IP Threaded
- \_\_\_ -NH No-Hub
- \_\_\_ -NL Neo-Loc

**'E' BODY HT. DIM.**

- 4-3/16 [106]
- 2-7/16 [62]
- 2-3/4 [70]
- 2-13/16 [71]
- 2-7/8 [73]
- 3-13/16 [97]
- 3-7/8 [98]

**PREFIXES**

- \_\_\_ ZB D.C.C.I. Body Assembly w/ Polished Bronze Top
- \_\_\_ ZN D.C.C.I. Body Assembly w/ Polished Nickel Bronze Top\*
- \_\_\_ ZS D.C.C.I. Body Assembly w/ Polished Stainless Steel Top

**SUFFIXES**

- \_\_\_ -AR Acid Resisting Epoxy Coated Cast Iron
- \_\_\_ -EF 3/4 [19] Extension Frame
- \_\_\_ -G Galvanized Cast Iron
- \_\_\_ -LR Low Rough-In (For 6 [152] and 8 [203] Strainers Only)
- \_\_\_ -P Trap Primer Connection (Specify 1/2" [13] or 3/4 [19])
- \_\_\_ -SA Stabilizer Assembly for Sub-Floor Install (See Z1035)
- \_\_\_ -SQ Stabilizer Assembly for Steel Decking Install (See Z1035-Q)
- \_\_\_ -SR Stabilizer Ring Assembly for On-Grade Install
- \_\_\_ -TC Neo-Loc Test Cap Gasket (2-3-4 [51-76-102] NL Outlet Only)
- \_\_\_ -TSP Trap Seal Protection Device (Size Matches Drain Outlet Selected) (See Z1072)
- \_\_\_ -U 2 - 3-1/4 [51-83] High Post-Pour Extension Adapter
- \_\_\_ -UP 1-3/4 [44] Pre-Pour Adjustment Extension Adapter
- \_\_\_ -VP Vandal-Proof Secured Top
- \_\_\_ -Y Sediment Bucket

\* Regularly furnished unless otherwise specified

**⚠ WARNING:** Cancer and Reproductive Harm - [www.P65Warnings.ca.gov](http://www.P65Warnings.ca.gov)

**⚠ ADVERTENCIA:** Cáncer y daño reproductivo - [www.P65Warnings.ca.gov](http://www.P65Warnings.ca.gov)

**⚠ AVERTISSEMENT:** Cancer et effets néfastes sur la reproduction - [www.P65Warnings.ca.gov](http://www.P65Warnings.ca.gov)

Zurn Industries, LLC | Specification Drainage Operation  
 1801 Pittsburgh Avenue, Erie, PA 16502, Ph. 855.663.9876

7900 Goreway Drive, Unit 10, Brampton, Ontario L6T 5W6, Ph. 877.892.5216

[www.zurn.com](http://www.zurn.com)

Rev. G  
 Date: 01/02/23  
 C.N. No. 144898  
 Patent [zurn.com/patents](http://zurn.com/patents)  
 Prod. | Dwg. No. Z415-BZ1

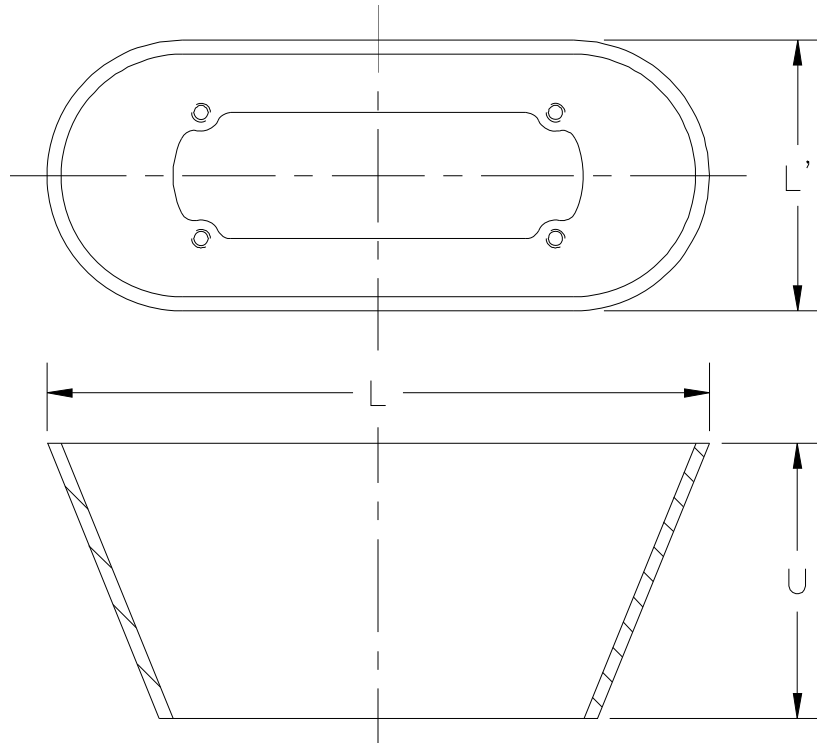


**Z329** ← **HD**  
**FUNNEL CONVERTING ASSEMBLY**

**SPECIFICATION SHEET**

**TAG** \_\_\_\_\_

Dimensional Data (inches and [ mm ]) are Subject to Manufacturing Tolerances and Change Without Notice



**ENGINEERING SPECIFICATION: ZURNZ329**  
 7" [178mm] or 9" [229mm] (specify) Oval funnel converting assembly, Dura-Coated cast iron (or finish to suit drain top), with necessary fasteners to secure funnel to strainer. (Available on 7" [178mm] diameter or larger size drain tops only.)

Product Designation	Dimensions In Inches [mm]			Approx. Wt. Lbs. [kg]
	L	L'	U	
-7	6-3/4 [171]	3 [76]	1[25]	2 [1]
-9	8-7/8 [225]	3-5/8 [92]	3-3/4 [95]	4 [2]

**OPTIONS** (Check/specify appropriate options)

**PREFIXES**

- \_\_\_ **Z** D.C.C.I. Funnel\*
- \_\_\_ **ZN** Polished Nickel Bronze Funnel

**SUFFIXES**

- \_\_\_ **-AR** Acid Resisting Epoxy Coated Cast Iron

\* Regularly furnished unless otherwise specified.

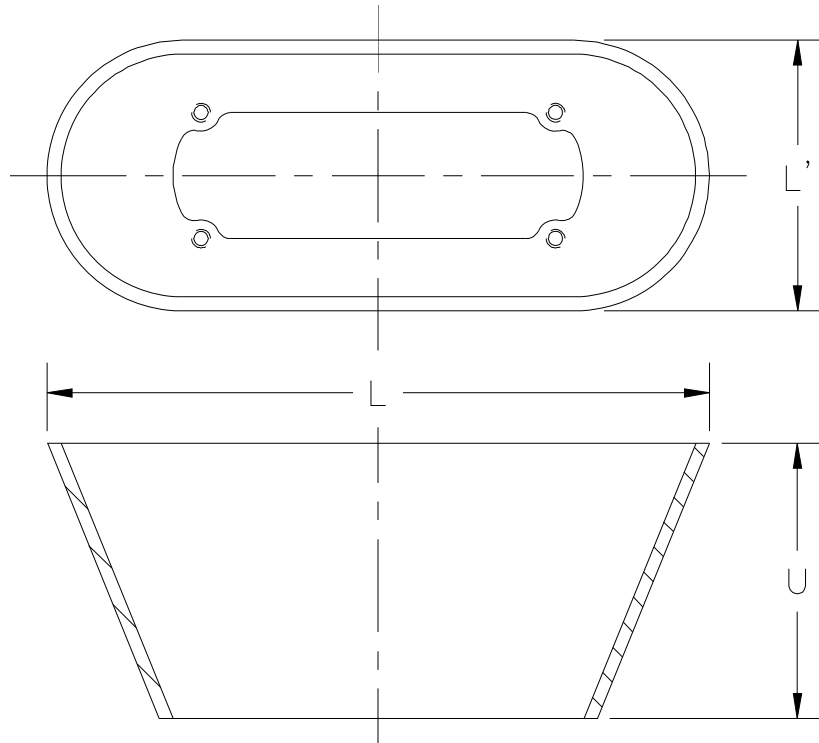


**Z329** ← **HD**  
**FUNNEL CONVERTING ASSEMBLY**

**SPECIFICATION SHEET**

**TAG** \_\_\_\_\_

Dimensional Data (inches and [ mm ]) are Subject to Manufacturing Tolerances and Change Without Notice



**ENGINEERING SPECIFICATION: ZURNZ329**  
 7" [178mm] or 9" [229mm] (specify) Oval funnel converting assembly, Dura-Coated cast iron (or finish to suit drain top), with necessary fasteners to secure funnel to strainer. (Available on 7" [178mm] diameter or larger size drain tops only.)

Product Designation	Dimensions In Inches [mm]			Approx. Wt. Lbs. [kg]
	L	L'	U	
-7	6-3/4 [171]	3 [76]	1[25]	2 [1]
-9	8-7/8 [225]	3-5/8 [92]	3-3/4 [95]	4 [2]

**OPTIONS** (Check/specify appropriate options)

**PREFIXES**

- \_\_\_ Z D.C.C.I. Funnel\*
- \_\_\_ **ZN** Polished Nickel Bronze Funnel

**SUFFIXES**

- \_\_\_ -AR Acid Resisting Epoxy Coated Cast Iron

\* Regularly furnished unless otherwise specified.

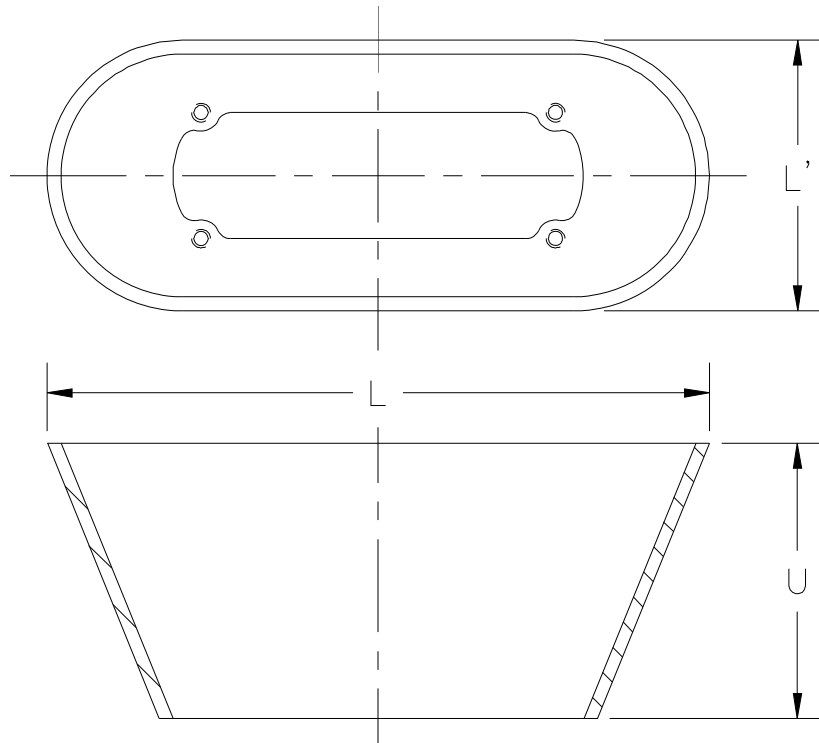


**Z329** ← **HD**  
**FUNNEL CONVERTING ASSEMBLY**

**SPECIFICATION SHEET**

**TAG** \_\_\_\_\_

Dimensional Data (inches and [ mm ]) are Subject to Manufacturing Tolerances and Change Without Notice



**ENGINEERING SPECIFICATION: ZURNZ329**  
 7" [178mm] or 9" [229mm] (specify) Oval funnel converting assembly, Dura-Coated cast iron (or finish to suit drain top), with necessary fasteners to secure funnel to strainer. (Available on 7" [178mm] diameter or larger size drain tops only.)

Product Designation	Dimensions In Inches [mm]			Approx. Wt. Lbs. [kg]
	L	L'	U	
-7	6-3/4 [171]	3 [76]	1[25]	2 [1]
-9	8-7/8 [225]	3-5/8 [92]	3-3/4 [95]	4 [2]

**OPTIONS** (Check/specify appropriate options)

**PREFIXES**

- \_\_\_ **Z** D.C.C.I. Funnel\*
- \_\_\_ **ZN** Polished Nickel Bronze Funnel

**SUFFIXES**

- \_\_\_ **-AR** Acid Resisting Epoxy Coated Cast Iron

\* Regularly furnished unless otherwise specified.



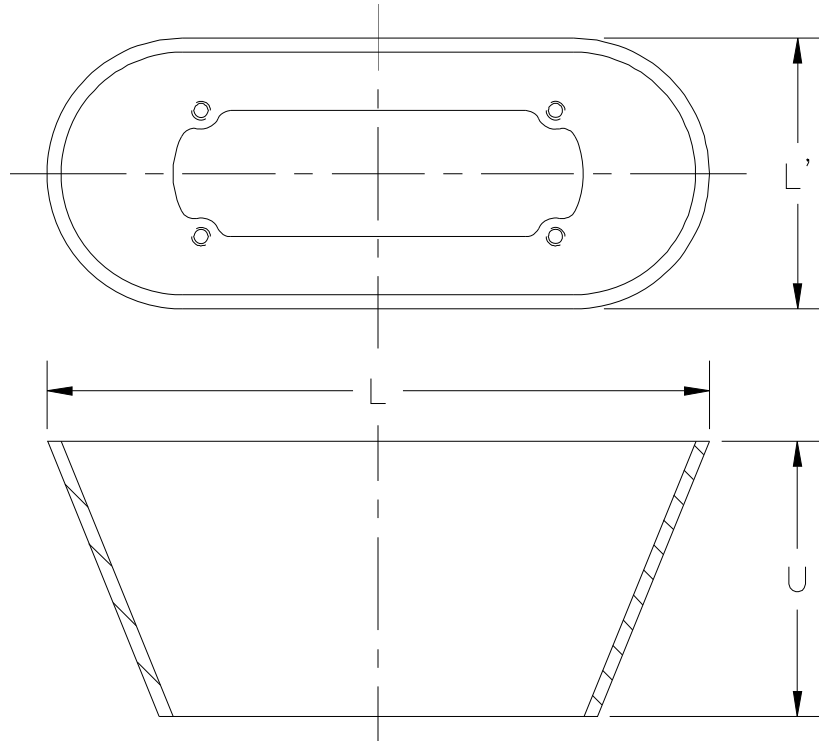


**Z329** HD  
**FUNNEL CONVERTING ASSEMBLY**

**SPECIFICATION SHEET**

**TAG** \_\_\_\_\_

Dimensional Data (inches and [ mm ]) are Subject to Manufacturing Tolerances and Change Without Notice



**ENGINEERING SPECIFICATION: ZURNZ329**  
 7" [178mm] or 9" [229mm] (specify) Oval funnel converting assembly, Dura-Coated cast iron (or finish to suit drain top), with necessary fasteners to secure funnel to strainer. (Available on 7" [178mm] diameter or larger size drain tops only.)

Product Designation	Dimensions In Inches [mm]			Approx. Wt. Lbs. [kg]
	L	L'	U	
-7	6-3/4 [171]	3 [76]	1[25]	2 [1]
-9	8-7/8 [225]	3-5/8 [92]	3-3/4 [95]	4 [2]

**OPTIONS** (Check/specify appropriate options)

**PREFIXES**

- \_\_\_ Z D.C.C.I. Funnel\*
- \_\_\_ **ZN** Polished Nickel Bronze Funnel

**SUFFIXES**

- \_\_\_ -AR Acid Resisting Epoxy Coated Cast Iron

\* Regularly furnished unless otherwise specified.



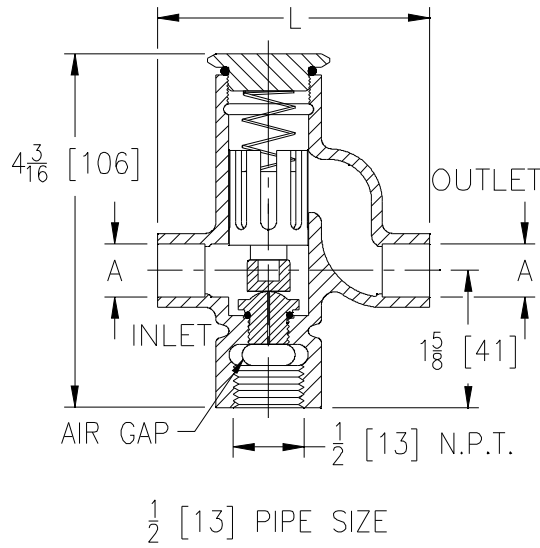
**Z1022-XL** ← TSP  
**SANI-GARD AUTOMATIC  
 TRAP PRIMER**

**SPECIFICATION SHEET**

**TAG** \_\_\_\_\_

Dimensional Data (inches and [ mm ]) are Subject to Manufacturing Tolerances and Change Without Notice

ALTERNATE  
 EQUAL



Dimensions In Inches[mm]		Approx. Wt. Lbs. [kg]
A Pipe Size/Connection	L	
1/2 [13] Solder Female	3-7/32 [82]	1 [.5]
1/2 [13] IP Female	3-7/32 [82]	1 [.5]
1/2 [13] Solder Female Union	5-21/32 [144]	1.5 [.75]
1/2 [13] IP Female Union	5-11/32 [136]	1.5 [.75]

**ENGINEERING SPECIFICATION: ZURN Z1022-XL**

Sani-Gard Automatic Trap Primer, all bronze body with integral vacuum breaker, non-liming internal operating piston, stainless steel spring, removable bronze seat with metering orifice, and sealed bronze cover.

*Zurn "XL" Lead-Free compliant products are a line of durable plumbing products designed and manufactured to comply with state laws and local codes that mandate maximum allowable lead content levels. Zurn "XL" products are manufactured in accordance to the Federal SWDA section 1417.*

**PIPE SIZE / CONNECTIONS** (Specify size/type)

- \_\_\_ 1/2 [13] Solder Female
- \_\_\_ 1/2 [13] IP Female
- \_\_\_ 1/2 [13] Solder Female Union
- \_\_\_ 1/2 [13] IP Female Union

**PREFIXES**

- \_\_\_ Z All Plain Bronze Body\*

**SUFFIXES**

- \_\_\_ -CP Chrome Plated Finish
- \_\_\_ -DU2 2-Outlet Distribution Unit
- \_\_\_ -DU3 3-Outlet Distribution Unit
- \_\_\_ -DU4 4-Outlet Distribution Unit
- \_\_\_ -RK Repair Kit



\* Regularly furnished unless otherwise specified.

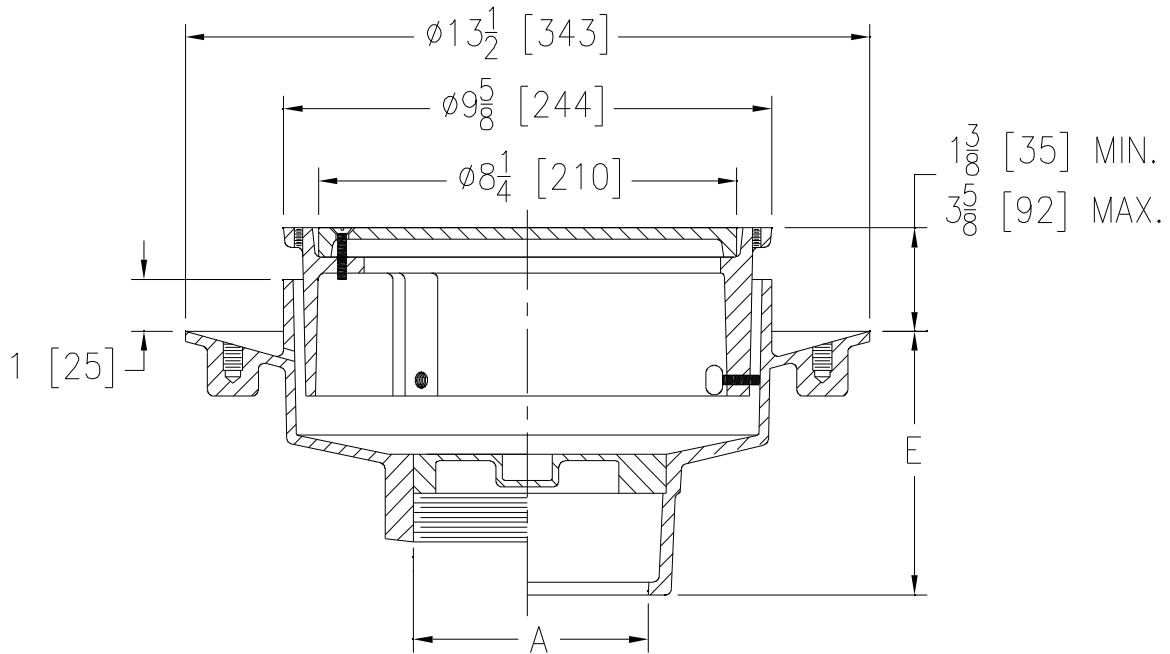


**Z1454** ← CO  
 ADJUSTABLE FLOOR CLEANOUT  
 W/ FLASHING FLANGE

SPECIFICATION SHEET

TAG \_\_\_\_\_

Dimensional Data (inches and [ mm ]) are Subject to Manufacturing Tolerances and Change Without Notice



A Pipe Size In. [mm]	Approx. Wt. Lbs [kg]
2,3 [51,76]	33 [15]
4 [102]	34 [15]

**ENGINEERING SPECIFICATION: ZURN Z1454**

Adjustable Floor cleanout, Dura-Coated cast iron body, gas and watertight ABS tapered thread plug, and round scoriated Dura-Coated cast iron adjustable with secured cover top complete with membrane flashing flange.

**OPTIONS** (Check/specify appropriate options)

**PIPE SIZE**

2,3,4 [51,76,102]  
 2,3,4 [51,76,102]

(Specify size/type) **OUTLET**

\_\_\_\_\_ IC Inside Caulk  
 \_\_\_\_\_ IP Threaded

**'E' DIM**

5-1/4 [133]  
 4-1/4 [108]

**PREFIXES**

\_\_\_\_\_ **Z** Dura-Coated Cast Iron.\*  
 \_\_\_\_\_ **ZN** D.C.C.I. with Polished Nickel Bronze Scoriated Top (Add 3/16 [5] to 1-3/8 [35] Min.- 3-5/8 [92] Max.)

**SUFFIXES**

\_\_\_\_\_ -C Clamp Collar  
 \_\_\_\_\_ -G Galvanized Cast Iron  
 \_\_\_\_\_ -VP Vandal-Proof Secured Top

\* Regularly furnished unless otherwise specified.



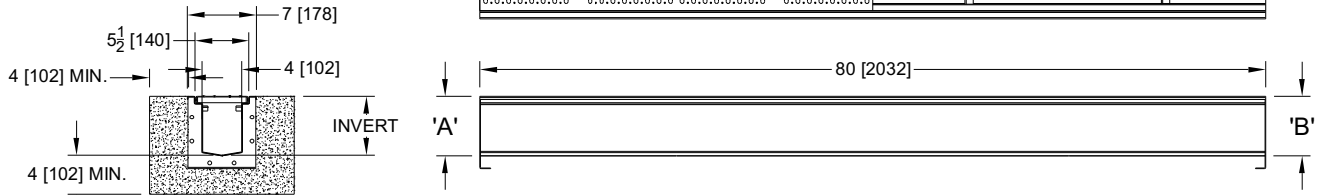
**ZS890** TD  
 7 [178] WIDE REVEAL TRENCH DRAIN SYSTEM  
 WITH "V" BOTTOM

SPECIFICATION SHEET

TAG \_\_\_\_\_

Design and Dimensional Data (inches and [ mm ]) are Subject to Manufacturing Tolerances and Change Without Notice

SPECIFYING ENGINEER IS RESPONSIBLE FOR  
 CONCRETE ENCASEMENT & REINFORCING  
 BASED UPON APPLICATION & LOCAL CODES



**ENGINEERING SPECIFICATION:** Zurn ZS890

Channels are 80" [2032mm] long, 7" [178mm] wide and have a 4" [102mm] throat. Modular channel sections are made of 16 ga. fabricated Stainless Steel conforming to ASTM A-240 (type 304). Channels have 10ga. bolted, flanged connection between channel sections that will not separate during the installation, gaskets available. Channels weigh less than 2.31 lbs. [1.05kg] per linear foot, have a smooth, 1-1/2" [38mm] radiused self cleaning bottom with a Manning's coefficient of .009 and 1.04% or neutral 0% built in slope. Channels have feet for patty pour or leveling studs standard to secure trench in its final location. Channels are provided with standard FS grates that lock down to frame. Zurn 6" [152mm] wide reveal Fabricated Stainless Steel Grate conforming to ASTM specification A-240, (type 304), is rated class A per the DIN EN1433 top load classification. Supplied in 40" [1016mm] nominal lengths with 5/16" [8mm] wide slots, and 3/4" [19mm] bearing depth. Grate has an open area of 12.00 sq. in. per ft. [7,742 sq. mm per meter]. Channels shall be produced in the U.S.A.

**PREFIX OPTIONS** (Check/specify appropriate options)

\_\_\_ **ZS** Type 304 (CF8) Stainless Steel\*

**SUFFIX OPTIONS** (Check/specify appropriate options)

**Outlet Adapters Add/Each**

- \_\_\_ E1 Closed End Cap
- \_\_\_ E2 2 [51] No-Hub End Outlet
- \_\_\_ E3 3 [76] No-Hub End Outlet
- \_\_\_ E4 4 [102] No-Hub End Outlet
- \_\_\_ U2 2 [51] No-Hub Bottom Outlet
- \_\_\_ U3 3 [76] No-Hub Bottom Outlet
- \_\_\_ U4 4 [102] No-Hub Bottom Outlet

**Grate Options** (Load Classifications are per DIN EN1433)

- \_\_\_ -BDC Black Acid Resistant Epoxy Coated Ductile Grate - Class C
- \_\_\_ -BDE Black Acid Resistant Epoxy Coated Ductile Grate - Class E
- \_\_\_ -DC Ductile Iron Solid Cover - Class C
- \_\_\_ -DGC Ductile Iron Slotted Grate - Class C
- \_\_\_ -DGE Ductile Iron Slotted Grate - Class E
- \_\_\_ -DGE-NA Ductile Iron Slotted Grate - Class E - North American
- \_\_\_ -GG Fiberglass Grate - Class A
- \_\_\_ -HPD Heel-Proof Ductile Slotted Grate - Class B
- \_\_\_ -HPDE Heel-Proof Ductile Slotted Grate - Class E
- \_\_\_ -HPP Heel-Proof Polyethylene Grate - Class A
- \_\_\_ -LD Ductile Iron Longitudinal Slotted Grate - Class B
- \_\_\_ -RFSC Reinforced Slotted Stainless Steel Grate - Class C
- \_\_\_ -RPSRC Reinforced Perforated Stainless Steel Reversed Punch Grate - Class C
- \_\_\_ -RPSRC Reinforced Perforated Stainless Steel Reversed Punch Grate - Class C

**Decorative Grate Options** (Load Classifications are per DIN EN1433)

- \_\_\_ -BCD Bronze Circular Decorative Grate - Class A
- \_\_\_ -BDD Bronze Diagonal Decorative Grate - Class A
- \_\_\_ -DCD Ductile Iron Circular Decorative Grate - Class C
- \_\_\_ -DDD Ductile Iron Diagonal Decorative Grate - Class A
- \_\_\_ -DOG Ductile Iron Decorative Grate - Class B
- \_\_\_ -DWV Ductile Wave Decorative Grate - Class A
- \_\_\_ -HPB Heel-Proof Bronze Slotted Grate - Class A
- \_\_\_ -HPS Heel-Proof Stainless Steel Slotted Grate - Class A
- \_\_\_ -SBG Stainless Steel Bar Grate - Class E
- \_\_\_ -SCD Stainless Steel Circular Decorative Grate - Class B
- \_\_\_ -SDD Stainless Steel Diagonal Decorative Grate - Class B
- \_\_\_ -SMG Stainless Steel Mesh Grate - Class B
- \_\_\_ -SOG Stainless Steel Decorative Grate - Class B
- \_\_\_ -SWGB Stainless Steel Wire Grate - Class B
- \_\_\_ -SWGB-AS Slip Resistant Stainless Steel Wire Grate - Class B

Trench No.**	Dimension In Inches [mm]				Flow		
	'A' Shallow Inv.		'B' Deep Inv.		(cfs)	(gpm)	(lps)
S89001	3.50	[88.9]	4.33	[110.1]	0.287	129	8
S89002	4.33	[110.1]	5.17	[131.2]	0.363	163	10
S89003	5.17	[131.2]	6.00	[152.4]	0.448	201	13
S89004	6.00	[152.4]	6.83	[173.6]	0.532	239	15
S89005	6.83	[173.6]	7.67	[194.7]	0.615	276	17
S89006	7.67	[194.7]	8.50	[215.9]	0.697	313	20
S89007	8.50	[215.9]	9.33	[237.1]	0.782	351	22
S89008	9.33	[237.1]	10.17	[258.2]	0.867	389	25
S89009	10.17	[258.2]	11.00	[279.4]	0.954	428	27
S89010	11.00	[279.4]	11.83	[300.6]	1.036	465	29
S89011	11.83	[300.6]	12.67	[321.7]	1.123	504	32
S89012	12.67	[321.7]	13.50	[342.9]	1.21	543	34
S89013	13.50	[342.9]	14.33	[364.1]	1.294	581	37
S89014	14.33	[364.1]	15.17	[385.2]	1.381	620	39
S89015	15.17	[385.2]	16.00	[406.4]	1.468	659	42

\*\* Neutral channel option (0% slope) available for each channel.

**MADE in the U.S.A.** (Load Classifications are per DIN EN1433)

- \_\_\_ -BDE Black Acid Resistant Epoxy Coated Ductile Grate - Class E
- \_\_\_ -DGC-USA Ductile Iron Slotted Grate - Class C
- \_\_\_ -DGE-USA Ductile Iron Slotted Grate - Class E
- \_\_\_ -FS Fabricated Stainless Steel Slotted Grate - Class A \*
- \_\_\_ -PPC Plastic Perforated Grate - Class C
- \_\_\_ -PS Perforated Stainless Steel Grate - Class A
- \_\_\_ -SBGS Serrated Stainless Steel Bar Grate CUSTOM - Class B
- \_\_\_ -BZ Bronze Decorative Grate - Class A
- \_\_\_ -NBZ-USA Nickel Bronze Decorative Grate - Class A
- \_\_\_ -PDE-USA Ductile Iron Perforated ADA Grate - Class E
- \_\_\_ -PSR Perforated Stainless Steel Raised Grate - Class A

**Miscellaneous Options**

- \_\_\_ -DB Drop-In Bucket Strainer
- \_\_\_ -K Anchor Flange
- \_\_\_ -KC Clamp Collar & Pan
- \_\_\_ -VP Vandal-Proof Lockdown
- \_\_\_ -W Single Piece of Welded

⚠ **WARNING:** Cancer and Reproductive Harm - [www.P65Warnings.ca.gov](http://www.P65Warnings.ca.gov)

⚠ **ADVERTENCIA:** Cáncer y daño reproductivo - [www.P65Warnings.ca.gov](http://www.P65Warnings.ca.gov)

⚠ **AVERTISSEMENT:** Cancer et effets néfastes sur la reproduction - [www.P65Warnings.ca.gov](http://www.P65Warnings.ca.gov)

\* Regularly furnished unless otherwise specified

Zurn Industries, LLC | Flo-Thru Division  
 1801 Pittsburgh Avenue, Erie, PA 16502, Ph. 855.663.9876

In Canada | Zurn Industries Limited  
 7900 Goreway Drive, Unit 10, Brampton, Ontario L6T 5W6, Ph. 877.892.5216

[www.zurn.com](http://www.zurn.com)

Rev. B  
 Date: 03/14/23  
 C.N. No. 145179  
 Prod. | Dwg. No. ZS890



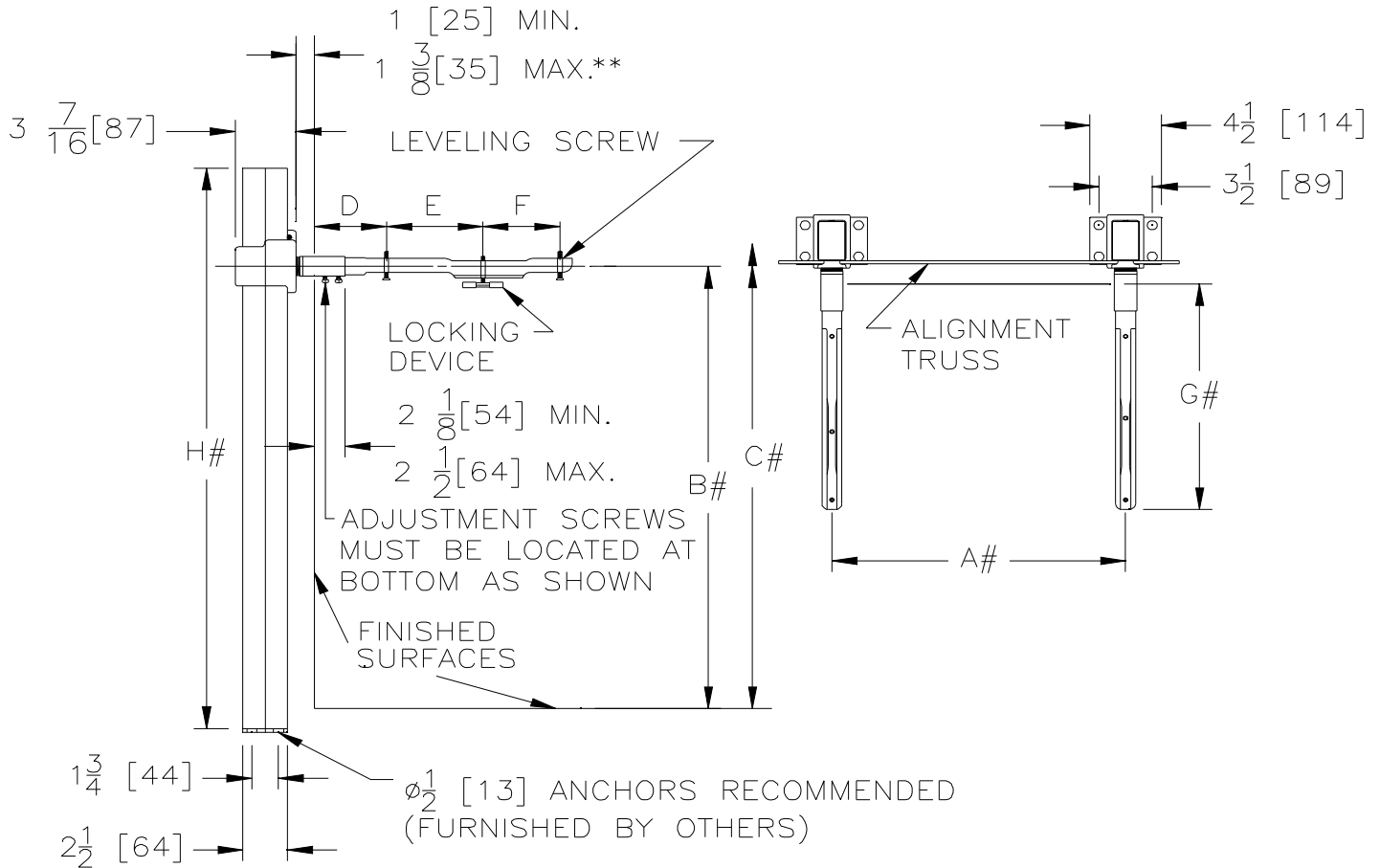
**Z1231** ← HL

**CONCEALED ARM SYSTEM  
WALL LAVATORIES**

**SPECIFICATION SHEET**

**TAG** \_\_\_\_\_

Dimensional Data (inches and [ mm ]) are Subject to Manufacturing Tolerances and Change Without Notice



**NOTES:**

# REFER TO ROUGH-IN GUIDE OF SPECIFIC FIXTURE FOR DIMENSION

\*\* WITH STANDARD SLEEVE LENGTH OF 4 [102]

Product No.	Approx. Wt. Lbs. [kg]
Z1231	45 [20]

**ENGINEERING SPECIFICATION: ZURN Z1231**

Lavatory support system with concealed arms. Complete with Dura-Coated rectangular steel uprights with welded feet, cast iron adjustable headers, concealed arms, steel sleeves, alignment truss, and mounting fasteners.

**OPTIONS** (Check/specify appropriate options)

**PREFIXES**

\_\_\_ **Z** Dura-Coated System with Concealed Arms\*

**SUFFIXES**

- \_\_\_ -AL Adapter Lug
- \_\_\_ -CB Carrier Bank
- \_\_\_ -D Back to Back System
- \_\_\_ -E2 Concealed Arm Escutcheons 2 [51] Long
- \_\_\_ -SL Sleeve Length Over 4 [102] (Specify Length)
- \_\_\_ -WS Wall Support Valve Plate (Specify Knee or Foot action, Valve Name, and Number)
- \_\_\_ **-79** ADA Rough-in

\* Regularly furnished unless otherwise specified.



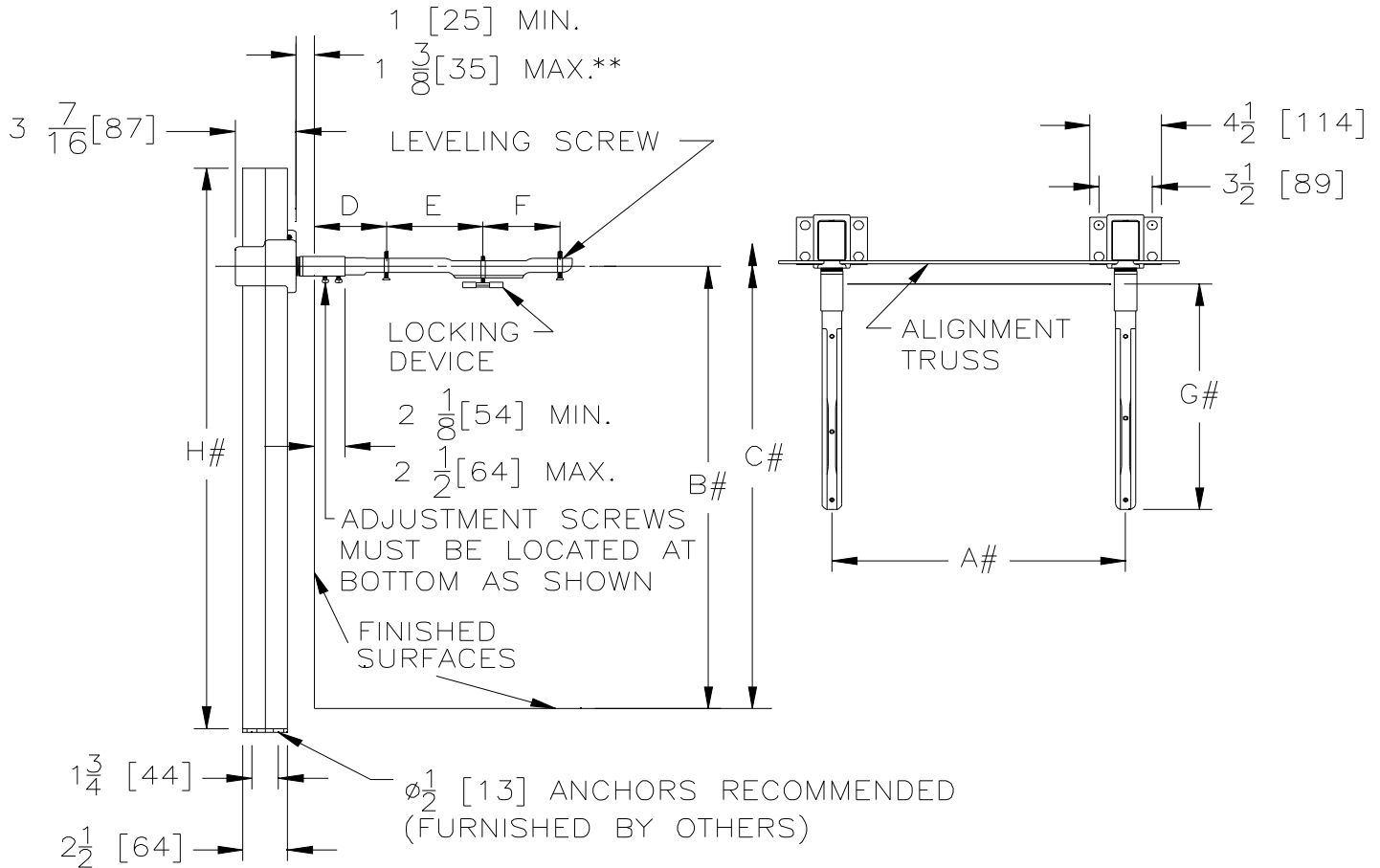
**Z1231** ← L

**CONCEALED ARM SYSTEM  
WALL LAVATORIES**

**SPECIFICATION SHEET**

**TAG** \_\_\_\_\_

Dimensional Data (inches and [ mm ]) are Subject to Manufacturing Tolerances and Change Without Notice



**NOTES:**

# REFER TO ROUGH-IN GUIDE OF SPECIFIC FIXTURE FOR DIMENSION

\*\* WITH STANDARD SLEEVE LENGTH OF 4 [102]

Product No.	Approx. Wt. Lbs. [kg]
Z1231	45 [20]

**ENGINEERING SPECIFICATION: ZURN Z1231**

Lavatory support system with concealed arms. Complete with Dura-Coated rectangular steel uprights with welded feet, cast iron adjustable headers, concealed arms, steel sleeves, alignment truss, and mounting fasteners.

**OPTIONS** (Check/specify appropriate options)

**PREFIXES**

\_\_\_ **Z** Dura-Coated System with Concealed Arms\*

**SUFFIXES**

- \_\_\_ -AL Adapter Lug
- \_\_\_ -CB Carrier Bank
- \_\_\_ -D Back to Back System
- \_\_\_ -E2 Concealed Arm Escutcheons 2 [51] Long
- \_\_\_ -SL Sleeve Length Over 4 [102] (Specify Length)
- \_\_\_ -WS Wall Support Valve Plate (Specify Knee or Foot action, Valve Name, and Number)
- \_\_\_ -79 ADA Rough-in

\* Regularly furnished unless otherwise specified.