



Shoppers Drug Mart #1112
4990 Tecumseh Rd. East

AM7128 - ZURN Drains SDP



PREPARED BY: CARDINAL SALES



Z415-BZ1

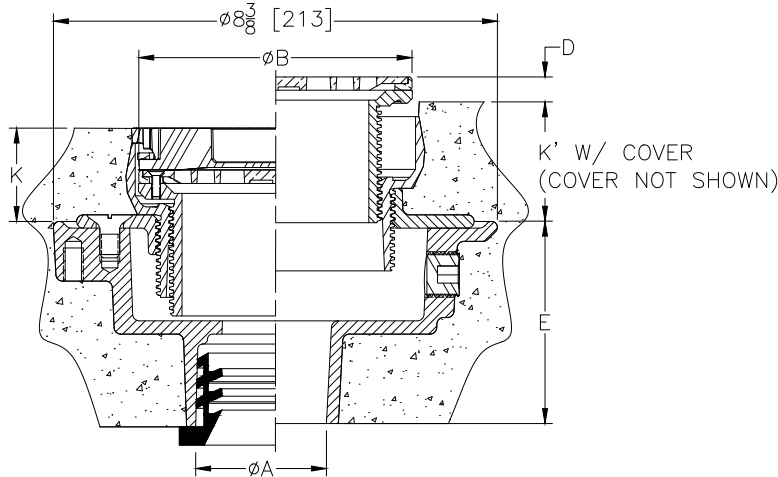
BODY ASSEMBLY W/"TYPE B" STRAINER
and EZ1™ TECHNOLOGY

FD

SPECIFICATION SHEET

TAG _____

Design and Dimensional Data (inches and [mm]) are Subject to Manufacturing Tolerances and Change Without Notice



Note:
Minimum K Dimension is only
possible with -LR Option when
using 6" [152] or 8" [203] Strainer

Dimensions In Inches								Approx.	Strainer
A Pipe Size	B Strainer Dia	D		K		K'		Wt. Lbs. [kg]	Open Area Sq. In [cm2]
		Min	Max.	Min.	Max	Min.	Max		
2, 3 [51, 76]	5 [127]	0	1 [25]	1-25/32 [45]	2-31/32 [75]	2-9/32 [58]	3-15/32 [88]	16 [7]	6-1/4 [40]
2, 3, 4 [51, 76, 102]	6 [152]	0	1 [25]	1-13/16 [46]	3 [76]	2-5/16 [59]	3-1/2 [89]	19 [9]	9 [58]
3, 4 [76, 102]	8 [203]	0	31/32 [25]	2-5/32 [55]	3-11/32 [85]	2-21/32 [67]	3-27/32 [98]	24 [11]	20 [129]
6 [152]	8 [203]	0	31/32 [25]	2-5/32 [55]	3-11/32 [85]	2-21/32 [67]	3-27/32 [98]	26 [12]	20 [129]

ENGINEERING SPECIFICATION:

Zurn Z415-BZ1 floor and shower drain, Dura-coated cast iron body with bottom outlet, combination invertible membrane clamp and adjustable collar with seepage slots and top assembly. EZ1™ drainage series is engineered to simplify product installation, comprised of concrete shield, up to 1" [25] of vertical post pour adjustment, pre-packaged shims for tilt correction and integrated, self-contained "Type B" light duty, heel proof strainer with rough-in cover for protection during concrete pour.

OPTIONS (Check/specify appropriate options)

PIPE SIZE

2, 3, 4 [51, 76, 102]
2 [51]
3 [76]
4 [102]
6 [152]
2, 3, 4 [51, 76, 102]
2, 3, 4 [51, 76, 102]

(Specify size/type) OUTLET

___ -IC Inside Caulk
___ -IP Threaded
___ -IP Threaded
___ -IP Threaded
___ -IP Threaded
___ -NH No-Hub
___ -NL Neo-Loc

'E' BODY HT.DIM.

4-3/16 [106]
2-7/16 [62]
2-3/4 [70]
2-13/16 [71]
2-7/8 [73]
3-13/16 [97]
3-7/8 [98]

PREFIXES

___ ZB D.C.C.I. Body Assembly w/ Polished Bronze Top
___ ZN D.C.C.I. Body Assembly w/ Polished Nickel Bronze Top*
___ ZS D.C.C.I. Body Assembly w/ Polished Stainless Steel Top

SUFFIXES

___ -AR Acid Resisting Epoxy Coated Cast Iron
___ -EF 3/4 [19] Extension Frame
___ -G Galvanized Cast Iron
___ -LR Low Rough-In (For 6 [152] and 8 [203] Strainers Only)
___ -P Trap Primer Connection (Specify 1/2* [13] or 3/4 [19])
___ -SA Stabilizer Assembly for Sub-Floor Install (See Z1035)
___ -SQ Stabilizer Assembly for Steel Decking Install (See Z1035-Q)

___ -SR Stabilizer Ring Assembly for On-Grade Install
___ -TC Neo-Loc Test Cap Gasket (2-3-4 [51-76-102] NL Outlet Only)
___ -TSP Trap Seal Protection Device (Size Matches Drain Outlet Selected) (See Z1072)
___ -U 2 - 3-1/4 [51-83] High Post-Pour Extension Adapter
___ -UP 1-3/4 [44] Pre-Pour Adjustment Extension Adapter
___ -VP Vandal-Proof Secured Top
___ -Y Sediment Bucket

* Regularly furnished unless otherwise specified

⚠ **WARNING:** Cancer and Reproductive Harm - www.P65Warnings.ca.gov

⚠ **ADVERTENCIA:** Cáncer y daño reproductivo - www.P65Warnings.ca.gov

⚠ **AVERTISSEMENT:** Cancer et effets néfastes sur la reproduction - www.P65Warnings.ca.gov

Zurn Industries, LLC | Specification Drainage Operation
1801 Pittsburgh Avenue, Erie, PA 16502, Ph. 855.663.9876

In Canada | Zurn Industries Limited
7900 Goreway Drive, Unit 10, Brampton, Ontario L6T 5W6, Ph. 877.892.5216

www.zurn.com

Rev. G
Date: 01/02/23
C.N. No. 144898
Patent zurn.com/patents
Prod. | Dwg. No. Z415-BZ1



Z415-BZ1

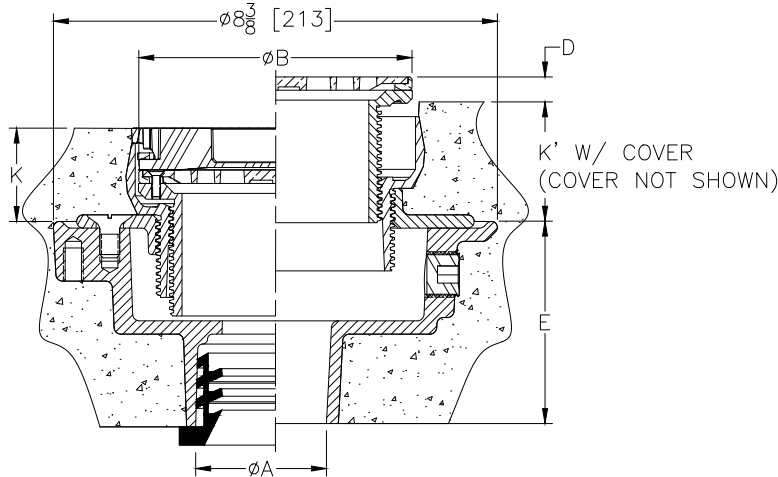
BODY ASSEMBLY W/"TYPE B" STRAINER
and EZ1™ TECHNOLOGY

HD

SPECIFICATION SHEET

TAG _____

Design and Dimensional Data (inches and [mm]) are Subject to Manufacturing Tolerances and Change Without Notice



Note:
Minimum K Dimension is only
possible with -LR Option when
using 6" [152] or 8" [203] Strainer

Dimensions In Inches								Approx.	Strainer
A Pipe Size	B Strainer Dia	D		K		K'		Wt. Lbs. [kg]	Open Area Sq. In [cm2]
		Min	Max.	Min.	Max	Min.	Max		
2, 3 [51, 76]	5 [127]	0	1 [25]	1-25/32 [45]	2-31/32 [75]	2-9/32 [58]	3-15/32 [88]	16 [7]	6-1/4 [40]
2, 3, 4 [51, 76, 102]	6 [152]	0	1 [25]	1-13/16 [46]	3 [76]	2-5/16 [59]	3-1/2 [89]	19 [9]	9 [58]
3, 4 [76, 102]	8 [203]	0	31/32 [25]	2-5/32 [55]	3-11/32 [85]	2-21/32 [67]	3-27/32 [98]	24 [11]	20 [129]
6 [152]	8 [203]	0	31/32 [25]	2-5/32 [55]	3-11/32 [85]	2-21/32 [67]	3-27/32 [98]	26 [12]	20 [129]

ENGINEERING SPECIFICATION:

Zurn Z415-BZ1 floor and shower drain, Dura-coated cast iron body with bottom outlet, combination invertible membrane clamp and adjustable collar with seepage slots and top assembly. EZ1™ drainage series is engineered to simplify product installation, comprised of concrete shield, up to 1" [25] of vertical post pour adjustment, pre-packaged shims for tilt correction and integrated, self-contained "Type B" light duty, heel proof strainer with rough-in cover for protection during concrete pour.

OPTIONS (Check/specify appropriate options)

PIPE SIZE

2, 3, 4 [51, 76, 102]
2 [51]
3 [76]
4 [102]
6 [152]
2, 3, 4 [51, 76, 102]
2, 3, 4 [51, 76, 102]

(Specify size/type) OUTLET

___ -IC Inside Caulk
___ -IP Threaded
___ -IP Threaded
___ -IP Threaded
___ -IP Threaded
___ -NH No-Hub
___ -NL Neo-Loc

'E' BODY HT.DIM.

4-3/16 [106]
2-7/16 [62]
2-3/4 [70]
2-13/16 [71]
2-7/8 [73]
3-13/16 [97]
3-7/8 [98]

PREFIXES

___ ZB D.C.C.I. Body Assembly w/ Polished Bronze Top
___ ZN D.C.C.I. Body Assembly w/ Polished Nickel Bronze Top*
___ ZS D.C.C.I. Body Assembly w/ Polished Stainless Steel Top

SUFFIXES

___ -AR Acid Resisting Epoxy Coated Cast Iron
___ -EF 3/4 [19] Extension Frame
___ -G Galvanized Cast Iron
___ -LR Low Rough-In (For 6 [152] and 8 [203] Strainers Only)
___ -P Trap Primer Connection (Specify 1/2* [13] or 3/4 [19])
___ -SA Stabilizer Assembly for Sub-Floor Install (See Z1035)
___ -SQ Stabilizer Assembly for Steel Decking Install (See Z1035-Q)

___ -SR Stabilizer Ring Assembly for On-Grade Install
___ -TC Neo-Loc Test Cap Gasket (2-3-4 [51-76-102] NL Outlet Only)
___ -TSP Trap Seal Protection Device (Size Matches Drain Outlet Selected) (See Z1072)
___ -U 2 - 3-1/4 [51-83] High Post-Pour Extension Adapter
___ -UP 1-3/4 [44] Pre-Pour Adjustment Extension Adapter
___ -VP Vandal-Proof Secured Top
___ -Y Sediment Bucket

* Regularly furnished unless otherwise specified

⚠ **WARNING:** Cancer and Reproductive Harm - www.P65Warnings.ca.gov

⚠ **ADVERTENCIA:** Cáncer y daño reproductivo - www.P65Warnings.ca.gov

⚠ **AVERTISSEMENT:** Cancer et effets néfastes sur la reproduction - www.P65Warnings.ca.gov

Zurn Industries, LLC | Specification Drainage Operation
1801 Pittsburgh Avenue, Erie, PA 16502, Ph. 855.663.9876

In Canada | Zurn Industries Limited
7900 Goreway Drive, Unit 10, Brampton, Ontario L6T 5W6, Ph. 877.892.5216

www.zurn.com

Rev. G
Date: 01/02/23
C.N. No. 144898
Patent zurn.com/patents
Prod. | Dwg. No. Z415-BZ1

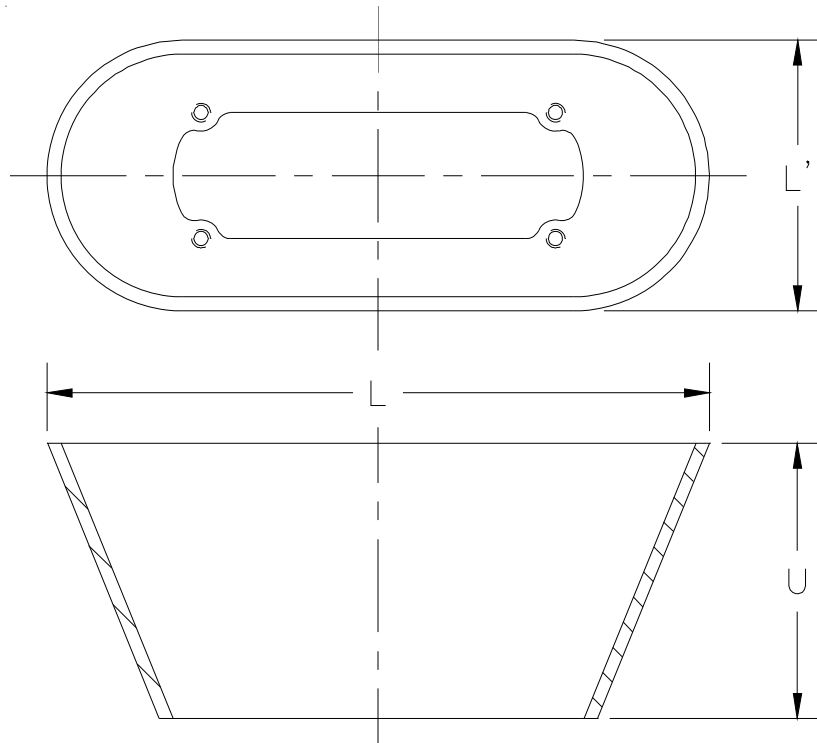


Z329 ← **HD**
FUNNEL CONVERTING ASSEMBLY

SPECIFICATION SHEET

TAG _____

Dimensional Data (inches and [mm]) are Subject to Manufacturing Tolerances and Change Without Notice



ENGINEERING SPECIFICATION: ZURN Z329

7" [178mm] or 9" [229mm] (specify) Oval funnel converting assembly, Dura-Coated cast iron (or finish to suit drain top), with necessary fasteners to secure funnel to strainer. (Available on 7" [178mm] diameter or larger size drain tops only.)

Product Designation	Dimensions In Inches [mm]			Approx. Wt. Lbs. [kg]
	L	L'	U	
-7	6-3/4 [171]	3 [76]	1[25]	2 [1]
-9	8-7/8 [225]	3-5/8 [92]	3-3/4 [95]	4 [2]

OPTIONS (Check/specify appropriate options)

PREFIXES

___ **Z** D.C.C.I. Funnel*
___ **ZN** Polished Nickel Bronze Funnel

SUFFIXES

___ **-AR** Acid Resisting Epoxy Coated Cast Iron

* Regularly furnished unless otherwise specified.

Zurn Industries, LLC | Specification Drainage Operation
1801 Pittsburgh Avenue, Erie, PA U.S.A. 16502 · Ph. 855-663-9876, Fax 814-454-7929
In Canada | **Zurn Industries Limited**
3544 Nashua Drive, Mississauga, Ontario L4V 1L2 · Ph. 905-405-8272, Fax 905-405-1292
www.zurn.com

Rev. J
Date: 09/26/2017
C.N. No. 137841
Prod. | Dwg. No. Z329

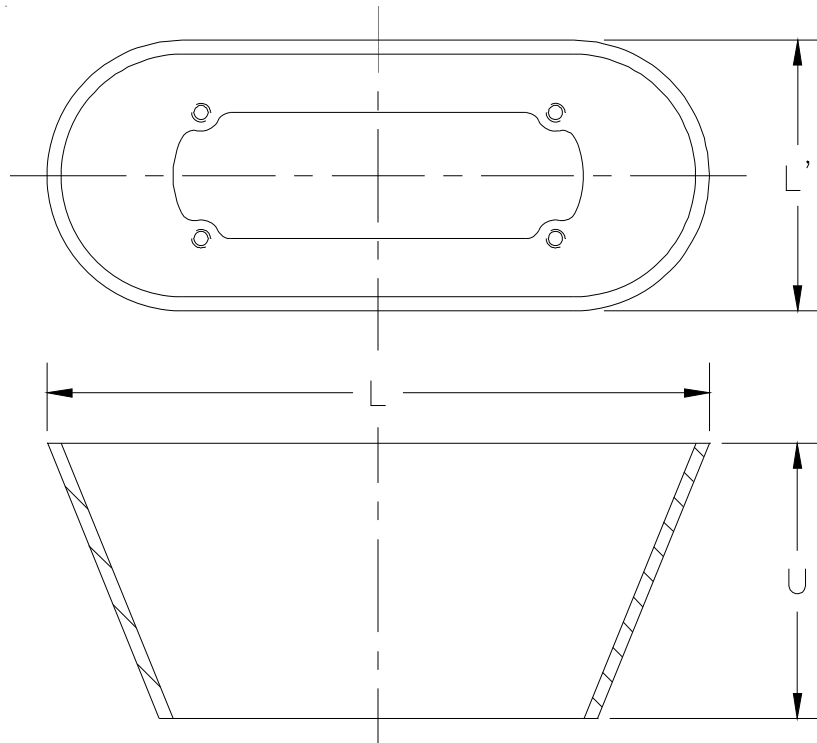


Z329 HD
FUNNEL CONVERTING ASSEMBLY

SPECIFICATION SHEET

TAG _____

Dimensional Data (inches and [mm]) are Subject to Manufacturing Tolerances and Change Without Notice



ENGINEERING SPECIFICATION: ZURN Z329

7" [178mm] or 9" [229mm] (specify) Oval funnel converting assembly, Dura-Coated cast iron (or finish to suit drain top), with necessary fasteners to secure funnel to strainer. (Available on 7" [178mm] diameter or larger size drain tops only.)

Product Designation	Dimensions In Inches [mm]			Approx. Wt. Lbs. [kg]
	L	L'	U	
-7	6-3/4 [171]	3 [76]	1[25]	2 [1]
-9	8-7/8 [225]	3-5/8 [92]	3-3/4 [95]	4 [2]

OPTIONS (Check/specify appropriate options)

PREFIXES

___ Z D.C.C.I. Funnel*
___ **ZN** Polished Nickel Bronze Funnel

SUFFIXES

___ -AR Acid Resisting Epoxy Coated Cast Iron

* Regularly furnished unless otherwise specified.

Zurn Industries, LLC | Specification Drainage Operation
1801 Pittsburgh Avenue, Erie, PA U.S.A. 16502 · Ph. 855-663-9876, Fax 814-454-7929
In Canada | **Zurn Industries Limited**
3544 Nashua Drive, Mississauga, Ontario L4V 1L2 · Ph. 905-405-8272, Fax 905-405-1292
www.zurn.com

Rev. J
Date: 09/26/2017
C.N. No. 137841
Prod. | Dwg. No. Z329

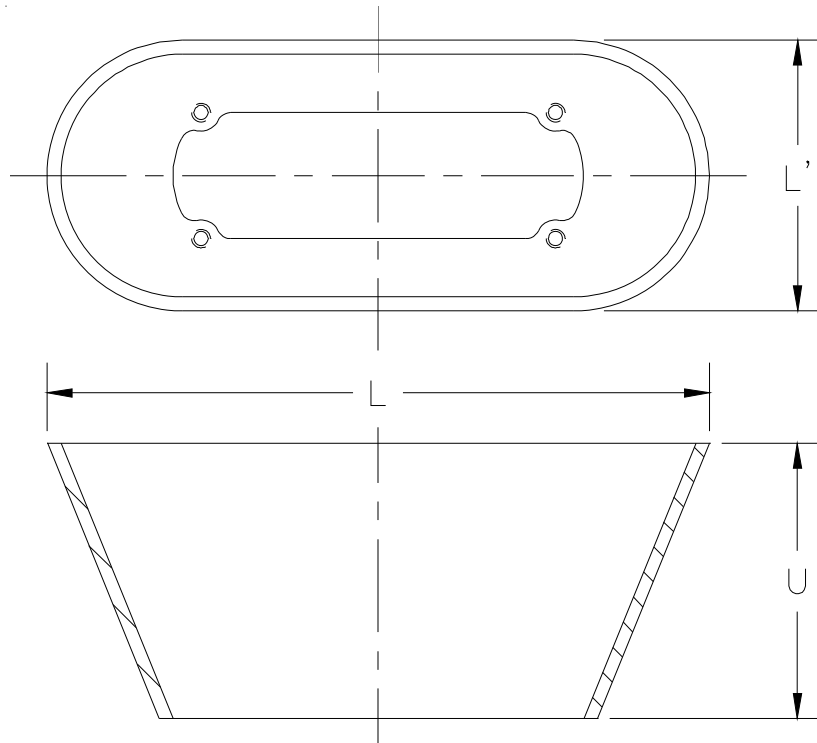


Z329 ← **HD**
FUNNEL CONVERTING ASSEMBLY

SPECIFICATION SHEET

TAG _____

Dimensional Data (inches and [mm]) are Subject to Manufacturing Tolerances and Change Without Notice



ENGINEERING SPECIFICATION: ZURN Z329
7" [178mm] or 9" [229mm] (specify) Oval funnel converting assembly, Dura-Coated cast iron (or finish to suit drain top), with necessary fasteners to secure funnel to strainer. (Available on 7" [178mm] diameter or larger size drain tops only.)

Product Designation	Dimensions In Inches [mm]			Approx. Wt. Lbs. [kg]
	L	L'	U	
-7	6-3/4 [171]	3 [76]	1[25]	2 [1]
-9	8-7/8 [225]	3-5/8 [92]	3-3/4 [95]	4 [2]

OPTIONS (Check/specify appropriate options)

PREFIXES

___ **Z** D.C.C.I. Funnel*
___ **ZN** Polished Nickel Bronze Funnel

SUFFIXES

___ **-AR** Acid Resisting Epoxy Coated Cast Iron

* Regularly furnished unless otherwise specified.

Zurn Industries, LLC | Specification Drainage Operation
1801 Pittsburgh Avenue, Erie, PA U.S.A. 16502 · Ph. 855-663-9876, Fax 814-454-7929
In Canada | **Zurn Industries Limited**
3544 Nashua Drive, Mississauga, Ontario L4V 1L2 · Ph. 905-405-8272, Fax 905-405-1292
www.zurn.com

Rev. J
Date: 09/26/2017
C.N. No. 137841
Prod. | Dwg. No. Z329

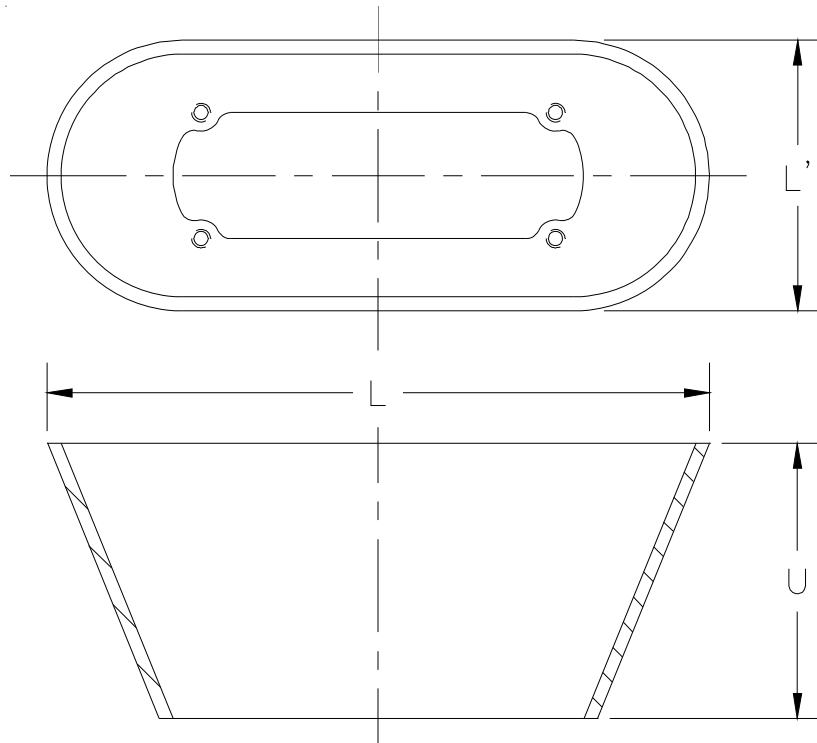


Z329 HD
FUNNEL CONVERTING ASSEMBLY

SPECIFICATION SHEET

TAG _____

Dimensional Data (inches and [mm]) are Subject to Manufacturing Tolerances and Change Without Notice



ENGINEERING SPECIFICATION: ZURN Z329

7" [178mm] or 9" [229mm] (specify) Oval funnel converting assembly, Dura-Coated cast iron (or finish to suit drain top), with necessary fasteners to secure funnel to strainer. (Available on 7" [178mm] diameter or larger size drain tops only.)

Product Designation	Dimensions In Inches [mm]			Approx. Wt. Lbs. [kg]
	L	L'	U	
-7	6-3/4 [171]	3 [76]	1[25]	2 [1]
-9	8-7/8 [225]	3-5/8 [92]	3-3/4 [95]	4 [2]

OPTIONS (Check/specify appropriate options)

PREFIXES

___ Z D.C.C.I. Funnel*
___ **ZN** Polished Nickel Bronze Funnel

SUFFIXES

___ -AR Acid Resisting Epoxy Coated Cast Iron

* Regularly furnished unless otherwise specified.

Zurn Industries, LLC | Specification Drainage Operation
1801 Pittsburgh Avenue, Erie, PA U.S.A. 16502 · Ph. 855-663-9876, Fax 814-454-7929
In Canada | **Zurn Industries Limited**
3544 Nashua Drive, Mississauga, Ontario L4V 1L2 · Ph. 905-405-8272, Fax 905-405-1292
www.zurn.com

Rev. J
Date: 09/26/2017
C.N. No. 137841
Prod. | Dwg. No. Z329

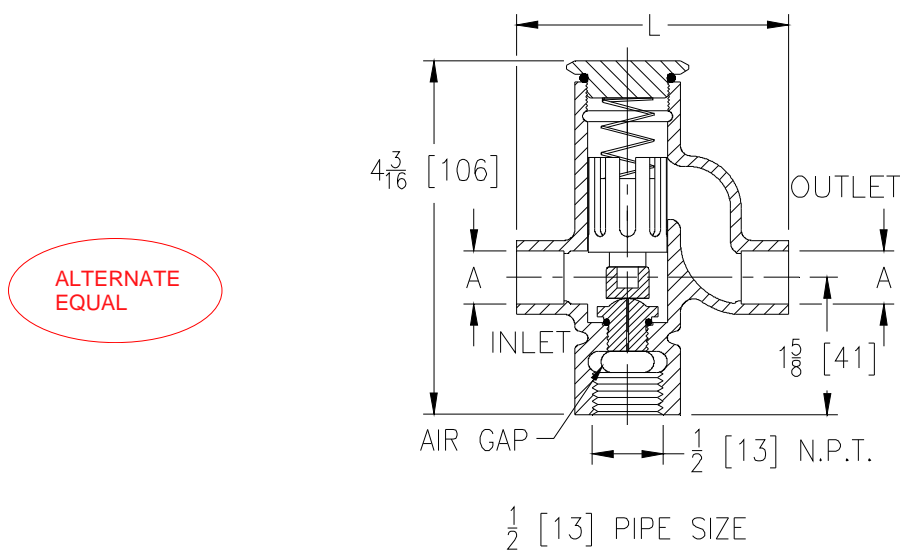


Z1022-XL ← TSP
SANI-GARD AUTOMATIC
TRAP PRIMER

SPECIFICATION SHEET

TAG _____

Dimensional Data (inches and [mm]) are Subject to Manufacturing Tolerances and Change Without Notice



Dimensions In Inches[mm]		Approx. Wt. Lbs. [kg]
A Pipe Size/Connection	L	
1/2 [13] Solder Female	3-7/32 [82]	1 [.5]
1/2 [13] IP Female	3-7/32 [82]	1 [.5]
1/2 [13] Solder Female Union	5-21/32 [144]	1.5 [.75]
1/2 [13] IP Female Union	5-11/32 [136]	1.5 [.75]

ENGINEERING SPECIFICATION: ZURN Z1022-XL

Sani-Gard Automatic Trap Primer, all bronze body with integral vacuum breaker, non-liming internal operating piston, stainless steel spring, removable bronze seat with metering orifice, and sealed bronze cover.

Zurn "XL" Lead-Free compliant products are a line of durable plumbing products designed and manufactured to comply with state laws and local codes that mandate maximum allowable lead content levels. Zurn "XL" products are manufactured in accordance to the Federal SWDA section 1417.

PIPE SIZE / CONNECTIONS (Specify size/type)

- ___ 1/2 [13] Solder Female
- ___ 1/2 [13] IP Female
- ___ 1/2 [13] Solder Female Union
- ___ 1/2 [13] IP Female Union

PREFIXES

- ___ Z All Plain Bronze Body*

SUFFIXES

- ___ -CP Chrome Plated Finish
- ___ -DU2 2-Outlet Distribution Unit
- ___ -DU3 3-Outlet Distribution Unit
- ___ -DU4 4-Outlet Distribution Unit
- ___ -RK Repair Kit



* Regularly furnished unless otherwise specified.

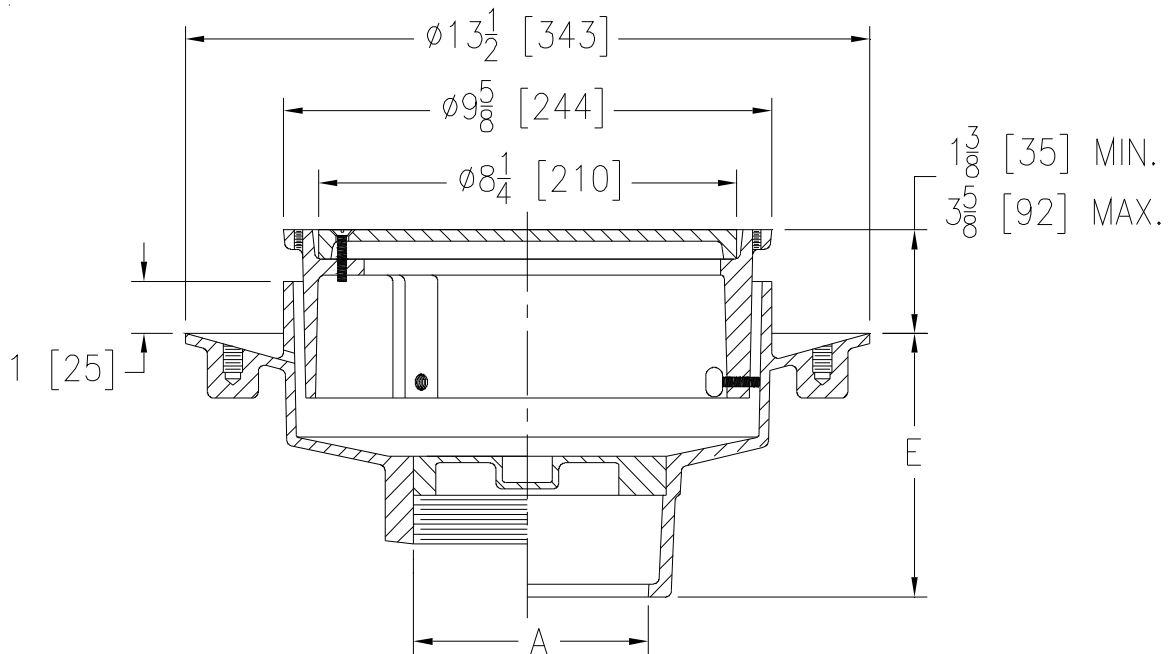


Z1454 ← **CO**
ADJUSTABLE FLOOR CLEANOUT
W/ FLASHING FLANGE

SPECIFICATION SHEET

TAG _____

Dimensional Data (inches and [mm]) are Subject to Manufacturing Tolerances and Change Without Notice



A Pipe Size In. [mm]	Approx. Wt. Lbs [kg]
2,3 [51,76]	33 [15]
4 [102]	34 [15]

ENGINEERING SPECIFICATION: ZURN Z1454

Adjustable Floor cleanout, Dura-Coated cast iron body, gas and watertight ABS tapered thread plug, and round scoriated Dura-Coated cast iron adjustable with secured cover top complete with membrane flashing flange.

OPTIONS (Check/specify appropriate options)

PIPE SIZE

2,3,4 [51,76,102]

2,3,4 [51,76,102]

(Specify size/type) **OUTLET**

_____ IC Inside Caulk

_____ IP Threaded

'E' DIM

5-1/4 [133]

4-1/4 [108]

PREFIXES

_____ **Z**

Dura-Coated Cast Iron.*

_____ **ZN**

D.C.C.I. with Polished Nickel Bronze Scoriated Top (Add 3/16 [5] to 1-3/8 [35] Min.- 3-5/8 [92] Max.)

SUFFIXES

_____ **-C** Clamp Collar

_____ **-G** Galvanized Cast Iron

_____ **-VP** Vandal-Proof Secured Top

* Regularly furnished unless otherwise specified.

Zurn Industries, LLC | Specification Drainage Operation
1801 Pittsburgh Avenue, Erie, PA U.S.A. 16502 · Ph. 855-663-9876, Fax 814-454-7929
In Canada | **Zurn Industries Limited**
3544 Nashua Drive, Mississauga, Ontario L4V 1L2 · Ph. 905-405-8272, Fax 905-405-1292
www.zurn.com

Rev. H
Date: 09/25/2017
C.N. No. 137827
Prod. | Dwg. No. Z1454



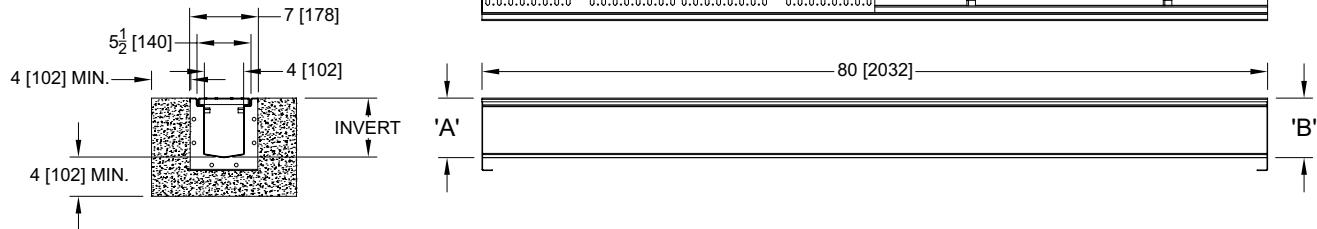
ZS890 TD

7 [178] WIDE REVEAL TRENCH DRAIN SYSTEM WITH "V" BOTTOM

SPECIFICATION SHEET

TAG _____

Design and Dimensional Data (inches and [mm]) are Subject to Manufacturing Tolerances and Change Without Notice

SPECIFYING ENGINEER IS RESPONSIBLE FOR
CONCRETE ENCASEMENT & REINFORCING
BASED UPON APPLICATION & LOCAL CODES**ENGINEERING SPECIFICATION:** Zurn ZS890

Channels are 80" [2032mm] long, 7" [178mm] wide and have a 4" [102mm] throat. Modular channel sections are made of 16 ga. fabricated Stainless Steel conforming to ASTM A-240 (type 304). Channels have 10ga. bolted, flanged connection between channel sections that will not separate during the installation, gaskets available. Channels weigh less than 2.31 lbs. [1.05kg] per linear foot, have a smooth, 1-1/2" [38mm] radiused self cleaning bottom with a Manning's coefficient of .009 and 1.04% or neutral 0% built in slope. Channels have feet for patty pour or leveling studs standard to secure trench in its final location. Channels are provided with standard FS grates that lock down to frame. Zurn 6" [152mm] wide reveal Fabricated Stainless Steel Grate conforming to ASTM specification A-240, (type 304), is rated class A per the DIN EN1433 top load classification. Supplied in 40" [1016mm] nominal lengths with 5/16" [8mm] wide slots, and 3/4" [19mm] bearing depth. Grate has an open area of 12.00 sq. in per ft. [7,742 sq. mm per meter]. Channels shall be produced in the U.S.A.

PREFIX OPTIONS (Check/specify appropriate options)☐ **ZS** ☐ **Type 304 (CF8) Stainless Steel*****SUFFIX OPTIONS** (Check/specify appropriate options)**Outlet Adapters Add/Each**

<input type="checkbox"/> E1	Closed End Cap	<input type="checkbox"/> U2	2 [51] No-Hub Bottom Outlet
<input type="checkbox"/> E2	2 [51] No-Hub End Outlet	<input type="checkbox"/> U3	3 [76] No-Hub Bottom Outlet
<input type="checkbox"/> E3	3 [76] No-Hub End Outlet	<input type="checkbox"/> U4	4 [102] No-Hub Bottom Outlet
<input type="checkbox"/> E4	4 [102] No-Hub End Outlet		

Grate Options (Load Classifications are per DIN EN1433)

<input type="checkbox"/> -BDC	Black Acid Resistant Epoxy Coated Ductile Grate - Class C
<input type="checkbox"/> -BDE	Black Acid Resistant Epoxy Coated Ductile Grate - Class E
<input type="checkbox"/> -DC	Ductile Iron Solid Cover - Class C
<input type="checkbox"/> -DGC	Ductile Iron Slotted Grate - Class C
<input type="checkbox"/> -DGE	Ductile Iron Slotted Grate - Class E
<input type="checkbox"/> -DGE-NA	Ductile Iron Slotted Grate - Class E - North American
<input type="checkbox"/> -GG	Fiberglass Grate - Class A
<input type="checkbox"/> -HPD	Heel-Proof Ductile Slotted Grate - Class B
<input type="checkbox"/> -HPDE	Heel-Proof Ductile Slotted Grate - Class E
<input type="checkbox"/> -HPP	Heel-Proof Polyethylene Grate - Class A
<input type="checkbox"/> -LD	Ductile Iron Longitudinal Slotted Grate - Class B
<input type="checkbox"/> -RFSC	Reinforced Slotted Stainless Steel Grate - Class C
<input type="checkbox"/> -RPSC	Reinforced Perforated Stainless Steel Grate - Class C
<input type="checkbox"/> -RPSRC	Reinforced Perforated Stainless Steel Reversed Punch Grate - Class C

Decorative Grate Options (Load Classifications are per DIN EN1433)

<input type="checkbox"/> -BCD	Bronze Circular Decorative Grate - Class A
<input type="checkbox"/> -BDD	Bronze Diagonal Decorative Grate - Class A
<input type="checkbox"/> -DCD	Ductile Iron Circular Decorative Grate - Class C
<input type="checkbox"/> -DDD	Ductile Iron Diagonal Decorative Grate - Class A
<input type="checkbox"/> -DOG	Ductile Iron Decorative Grate - Class B
<input type="checkbox"/> -DWV	Ductile Wave Decorative Grate - Class A
<input type="checkbox"/> -HPB	Heel-Proof Bronze Slotted Grate - Class A
<input type="checkbox"/> -HPS	Heel-Proof Stainless Steel Slotted Grate - Class A
<input type="checkbox"/> -SBG	Stainless Steel Bar Grate - Class E
<input type="checkbox"/> -SCD	Stainless Steel Circular Decorative Grate - Class B
<input type="checkbox"/> -SDD	Stainless Steel Diagonal Decorative Grate - Class B
<input type="checkbox"/> -SMG	Stainless Steel Mesh Grate - Class B
<input type="checkbox"/> -SOG	Stainless Steel Decorative Grate - Class B
<input type="checkbox"/> -SWGB	Stainless Steel Wire Grate - Class B
<input type="checkbox"/> -SWGB-AS	Slip Resistant Stainless Steel Wire Grate - Class B

Trench No.**	Dimension In Inches [mm]				Flow		
	'A' Shallow Inv.		'B' Deep Inv.		(cfs)	(gpm)	(lps)
S89001	3.50	[88.9]	4.33	[110.1]	0.287	129	8
S89002	4.33	[110.1]	5.17	[131.2]	0.363	163	10
S89003	5.17	[131.2]	6.00	[152.4]	0.448	201	13
S89004	6.00	[152.4]	6.83	[173.6]	0.532	239	15
S89005	6.83	[173.6]	7.67	[194.7]	0.615	276	17
S89006	7.67	[194.7]	8.50	[215.9]	0.697	313	20
S89007	8.50	[215.9]	9.33	[237.1]	0.782	351	22
S89008	9.33	[237.1]	10.17	[258.2]	0.867	389	25
S89009	10.17	[258.2]	11.00	[279.4]	0.954	428	27
S89010	11.00	[279.4]	11.83	[300.6]	1.036	465	29
S89011	11.83	[300.6]	12.67	[321.7]	1.123	504	32
S89012	12.67	[321.7]	13.50	[342.9]	1.21	543	34
S89013	13.50	[342.9]	14.33	[364.1]	1.294	581	37
S89014	14.33	[364.1]	15.17	[385.2]	1.381	620	39
S89015	15.17	[385.2]	16.00	[406.4]	1.468	659	42

** Neutral channel option (0% slope) available for each channel.

MADE in the U.S.A. (Load Classifications are per DIN EN1433)

<input type="checkbox"/> -BDE	Black Acid Resistant Epoxy Coated Ductile Grate - Class E
<input type="checkbox"/> -DGC-USA	Ductile Iron Slotted Grate - Class C
<input type="checkbox"/> -DGE-USA	Ductile Iron Slotted Grate - Class E
<input type="checkbox"/> -FS	Fabricated Stainless Steel Slotted Grate - Class A *
<input type="checkbox"/> -PPC	Plastic Perforated Grate - Class C
<input type="checkbox"/> -PS	Perforated Stainless Steel Grate - Class A
<input type="checkbox"/> -SBGS	Serrated Stainless Steel Bar Grate CUSTOM - Class B
Decorative MADE in the U.S.A. (Load Classifications are per DIN EN1433)	
<input type="checkbox"/> -BZ	Bronze Decorative Grate - Class A
<input type="checkbox"/> -NBZ-USA	Nickel Bronze Decorative Grate - Class A
<input type="checkbox"/> -PDE-USA	Ductile Iron Perforated ADA Grate - Class E
<input type="checkbox"/> -PSR	Perforated Stainless Steel Raised Grate - Class A

Miscellaneous Options

<input type="checkbox"/> -DB	Drop-In Bucket Strainer	<input type="checkbox"/> -VP	Vandal-Proof Lockdown
<input type="checkbox"/> -K	Anchor Flange	<input type="checkbox"/> -W	Single Piece of Welded Trench
<input type="checkbox"/> -KC	Clamp Collar & Pan		

⚠ **WARNING:** Cancer and Reproductive Harm - www.P65Warnings.ca.gov⚠ **ADVERTENCIA:** Cáncer y daño reproductivo - www.P65Warnings.ca.gov⚠ **AVERTISSEMENT:** Cancer et effets néfastes sur la reproduction - www.P65Warnings.ca.gov

* Regularly furnished unless otherwise specified

Zurn Industries, LLC | Flo-Thru Division

1801 Pittsburgh Avenue, Erie, PA 16502, Ph. 855.663.9876

In Canada | Zurn Industries Limited

7900 Goreway Drive, Unit 10, Brampton, Ontario L6T 5W6, Ph. 877.892.5216

www.zurn.com

Rev. B

Date: 03/14/23

C.N. No. 145179

Prod. | Dwg. No. ZS890

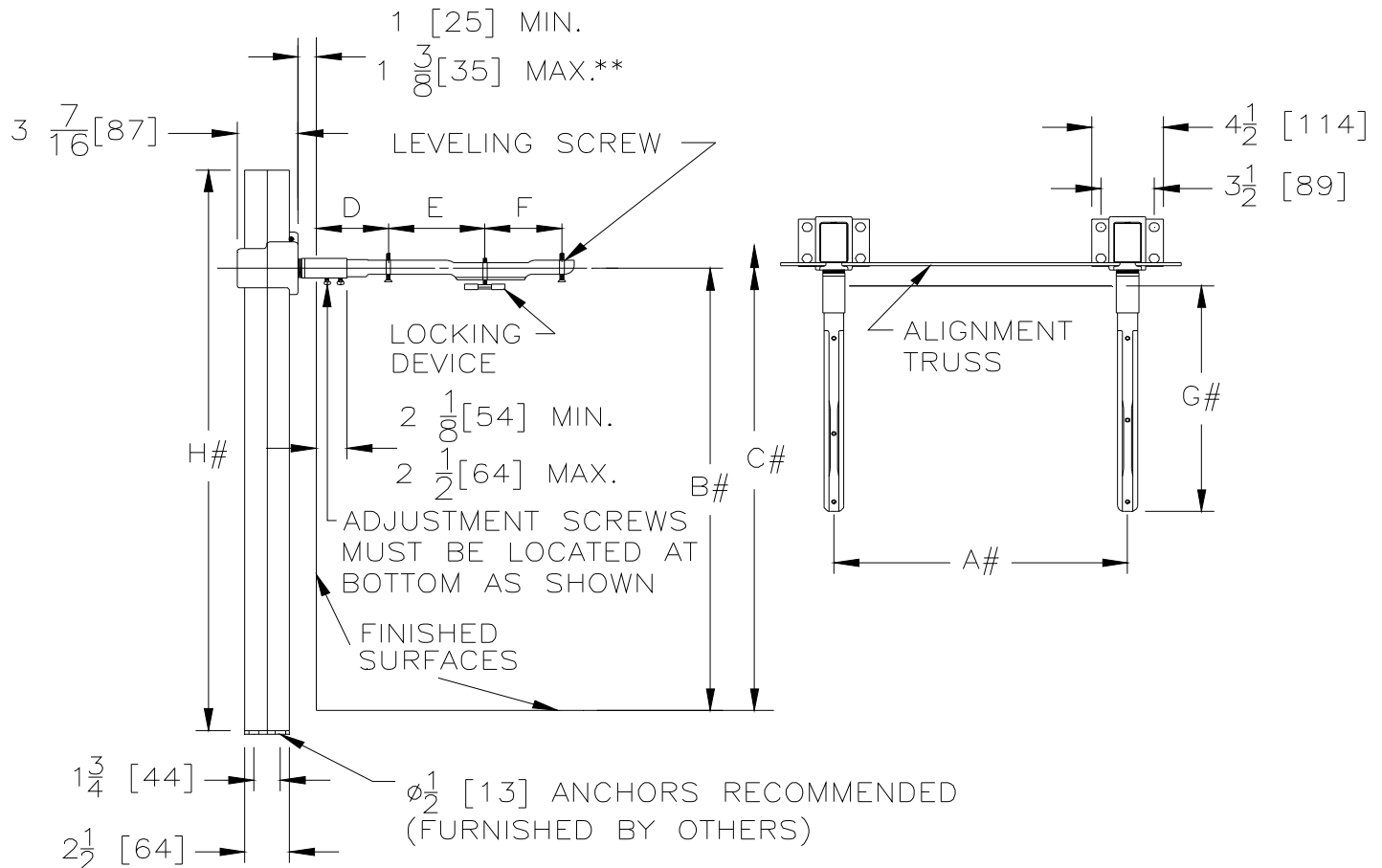


Z1231 ← HL
**CONCEALED ARM SYSTEM
WALL LAVATORIES**

SPECIFICATION SHEET

TAG _____

Dimensional Data (inches and [mm]) are Subject to Manufacturing Tolerances and Change Without Notice



NOTES:

REFER TO ROUGH-IN GUIDE OF SPECIFIC FIXTURE FOR DIMENSION

** WITH STANDARD SLEEVE LENGTH OF 4 [102]

Product No.	Approx. Wt. Lbs. [kg]
Z1231	45 [20]

ENGINEERING SPECIFICATION: ZURN Z1231

Lavatory support system with concealed arms. Complete with Dura-Coated rectangular steel uprights with welded feet, cast iron adjustable headers, concealed arms, steel sleeves, alignment truss, and mounting fasteners.

OPTIONS (Check/specify appropriate options)

PREFIXES

___ **Z** Dura-Coated System with Concealed Arms*

SUFFIXES

- ___ -AL Adapter Lug
- ___ -CB Carrier Bank
- ___ -D Back to Back System
- ___ -E2 Concealed Arm Escutcheons 2 [51] Long
- ___ -SL Sleeve Length Over 4 [102] (Specify Length)
- ___ -WS Wall Support Valve Plate (Specify Knee or Foot action, Valve Name, and Number)
- ___ **-79** ADA Rough-in

* Regularly furnished unless otherwise specified.



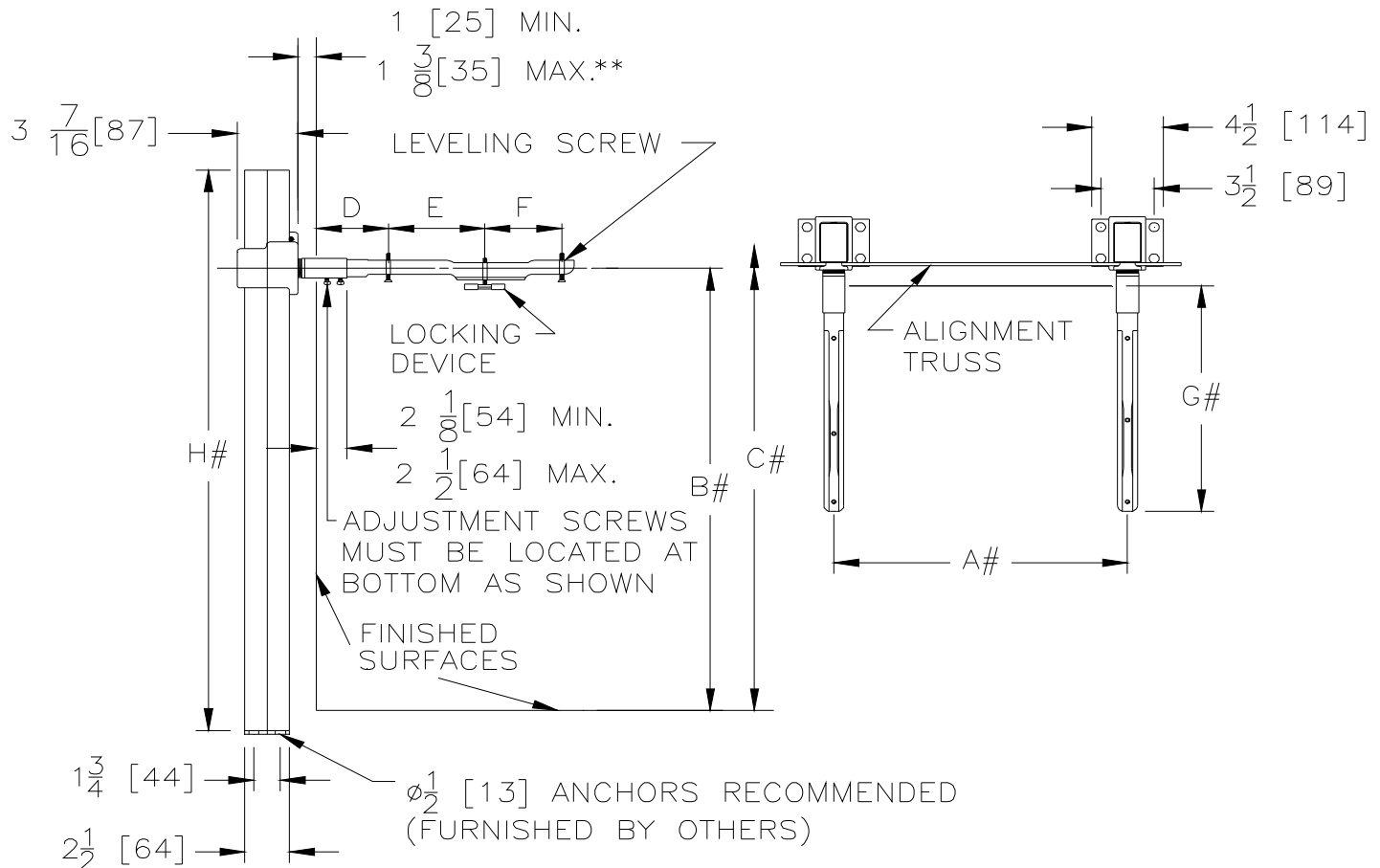
Z1231 L

CONCEALED ARM SYSTEM WALL LAVATORIES

SPECIFICATION SHEET

TAG _____

Dimensional Data (inches and [mm]) are Subject to Manufacturing Tolerances and Change Without Notice



NOTES:

REFER TO ROUGH-IN GUIDE OF SPECIFIC FIXTURE FOR DIMENSION

** WITH STANDARD SLEEVE LENGTH OF 4 [102]

Product No.	Approx. Wt. Lbs. [kg]
Z1231	45 [20]

ENGINEERING SPECIFICATION: ZURN Z1231

Lavatory support system with concealed arms. Complete with Dura-Coated rectangular steel uprights with welded feet, cast iron adjustable headers, concealed arms, steel sleeves, alignment truss, and mounting fasteners.

OPTIONS (Check/specify appropriate options)

PREFIXES

___ Z Dura-Coated System with Concealed Arms*

SUFFIXES

- ___ -AL Adapter Lug
- ___ -CB Carrier Bank
- ___ -D Back to Back System
- ___ -E2 Concealed Arm Escutcheons 2 [51] Long
- ___ -SL Sleeve Length Over 4 [102] (Specify Length)
- ___ -WS Wall Support Valve Plate (Specify Knee or Foot action, Valve Name, and Number)
- ___ -79 ADA Rough-in

* Regularly furnished unless otherwise specified.