



54 Audia Court, Unit 2
Concord, ON L4K 3N5
(905)-738-1400

Submittal 25-029-003

| PROJECT NAME | PROJECT ADDRESS | DATE SUBMITTED |
|------------------------|---|----------------|
| SDM 5872 LONDON 25-029 | 1540 ROB PANZER ROAD, UNIT #1-B LONDON, ONTARIO | Jul 2, 2025 |

| TO | FROM |
|---|---|
| Nick Cvik | INZAMAN KHAN |
| COMPANY | COMPANY |
| FLUID CONSTRUCTION & PROJECT MANAGEMENT | Consult Mechanical Inc. |
| EMAIL | EMAIL |
| nick@fluidconstruction.ca | inzaman@consultmechanical.com |
| ADDRESS | ADDRESS |
| 2800 JOHN ST #23 MARKHAM, ON L3R 0E2 | 54 Audia Court, Unit 2 Concord, ON L4K 3N5 |

Title

Trap Seal Primer

Description

Electronic Trap Primer: 695-ES01

Package Items

| SPEC | SUBSECTION | ITEM | TYPE |
|------|------------|------|------|
|------|------------|------|------|

ELECTRONIC TRAP PRIMER

» 695-ES01

ETP™

SPECIFICATION

Sioux Chief 695 Series ETP™ electronic trap primers shall be used where necessary to replenish water in floor drain traps to prevent escape of sewer gas. Trap Primer shall be listed and certified to ASSE 1044 and equipped with solenoid actuating device, vacuum breaker and proper electrical hardware. Trap primer's water release shall be factory-set for daily operation of 2 ounces of water and allow adjustment of the frequency and duration of the priming operation. Trap primer shall be equipped with an ASSE 1010 water hammer arrester to protect the solenoid device. Trap primer unit shall include a brass extension nipple (not pre-installed) to be used when additional length is needed. Trap primers not including an access box can be used in conjunction with various accessories within the 695 series (distribution splitter and wye) to prime up to 8 drains. The number of traps serviced by any trap primer is a function of activation frequency and evaporation rate and should be determined by the design engineer and/or the installing contractor.

MATERIALS

Arrester: stainless steel, EPDM o-ring, plastic piston, DOW 111 lubricant

Distribution vacuum breaker: brass

Solenoid: plastic housing, brass insides

Extension nipple: brass

OPTIMAL OPERATING TEMPERATURE/PRESSURE

35°F – 140°F / 20 psi – 80 psi

MAX OPERATING TEMPERATURE/PRESSURE

100 PSI operating / 150 PSI testing

ELECTRICAL

Connect unit to 120V AC supply. Power consumption is 9.2 watts at 60 Hz.

Maximum distance to electrical supply: 300 ft.

Minimum wire gauge: 18 ga.

DIMENSIONS

- A: inlet connection 1/2" MIP thread
B: outlet connections 1/2" MIP thread
C: extension nipple 1/2" FIP x 1/2" MIP x 4 1/2"

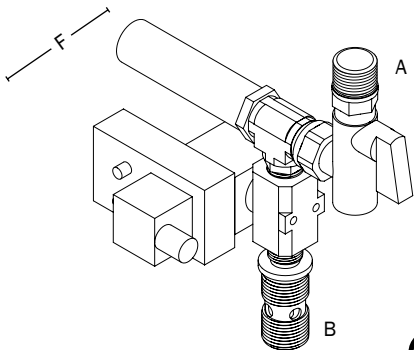
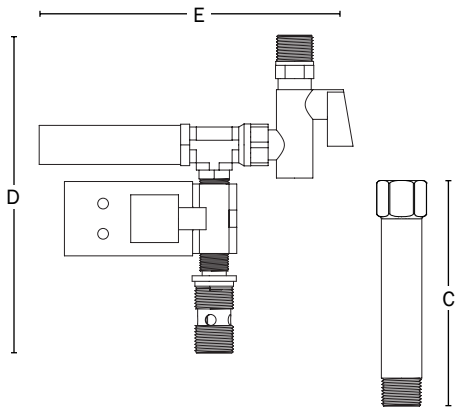
Surface Mount Unit

- D: overall height 7.5"
E: overall width 7.25"
F: overall depth 3.5"

| | |
|------------------|-----------------|
| ITEM # SUBMITTED | _____ |
| JOB NAME | _____ |
| LOCATION | _____ |
| ENGINEER | _____ |
| CONTRACTOR | _____ |
| PO# | _____ TAG _____ |



695-ES01



Item Number

695-ES01