



54 Audia Court, Unit 2
Concord, ON L4K 3N5
(905)-738-1400

Submittal 25-030-001

PROJECT NAME	PROJECT ADDRESS	DATE SUBMITTED
SDM 803, 1500 AVE. RD 25-030	1500 Avenue Rd, Toronto, ON M5M 3X2	May 21, 2025
TO	FROM	
Nick Cvik	INZAMAN KHAN	
COMPANY	COMPANY	
FLUID CONSTRUCTION & PROJECT MANAGEMENT	Consult Mechanical Inc.	
EMAIL	EMAIL	
nick@fluidconstruction.ca	inzaman@consultmechanical.com	
ADDRESS	ADDRESS	
2800 JOHN ST #23 MARKHAM, ON L3R 0E2	54 Audia Court, Unit 2 Concord, ON L4K 3N5	

Title

Plumbing Shops - HS / WH-1&2

Description

WH-1 & 2 Rheem RTEH4208T
HS- KINDRED LBS9106

Package Items

SPEC

SUBSECTION

ITEM

TYPE

SHOP DRAWING PACKAGE

Prepared for
CONSULT
MECHANICAL

**SHOPPERS
DRUG MART
#803**

MAY 21, 2025



Specification:

ADA compliant. Single compartment sink with faucet ledge. 20 gauge, type 302, 18-8 stainless steel. Self rimming. Exposed surfaces are satin finished. Undercoated to reduce condensation and resonance. Includes factory applied rim seal, cutout template, Universal Installation System hardware and waste assembly, location center.

Compartment Size: 9 1/4" x 11 5/8" x 6" (23cm x 30cm x 15cm)

Overall Size: 13 3/4" x 13 5/8" (35cm x 35cm)

Waste Options:

-1 = 3 1/2" (89mm) crumb cup waste assembly.

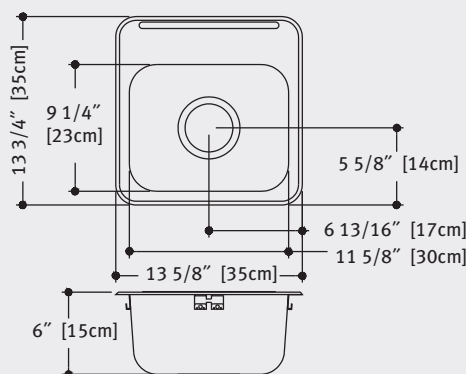
-3 = 1 1/2" (38mm) duplex waste assembly, with rubber stopper.

<p>3 1/2" waste</p> <ul style="list-style-type: none"> <input checked="" type="checkbox"/> LBS9106-1/1 <input type="checkbox"/> LBS9106-1/2 <input type="checkbox"/> LBS9106-1 	<p>1 1/2" waste</p> <ul style="list-style-type: none"> <input type="checkbox"/> LBS9106-3/1 <input type="checkbox"/> LBS9106-3/2 <input type="checkbox"/> LBS9106-3 	<p>Faucet hole drilling options</p> <p>1 hole, 1 1/2" diameter</p> <p>2 hole, 1 1/2" diameter, 4" centers</p> <p>Custom (non-returnable)</p>
--	---	---

***For custom please specify drilling requirements.**

Notes:

- Electronic specifications, reference www.kindred-sinkware.com
- The model as constructed is subject to the interpretation of local building codes. Check ADA, local wheelchair accessibility guidelines and local building codes to ensure the unobstructed knee space is achieved after installation.



cUPC®



PROJECT INFORMATION

Project Name:

Item Reference:

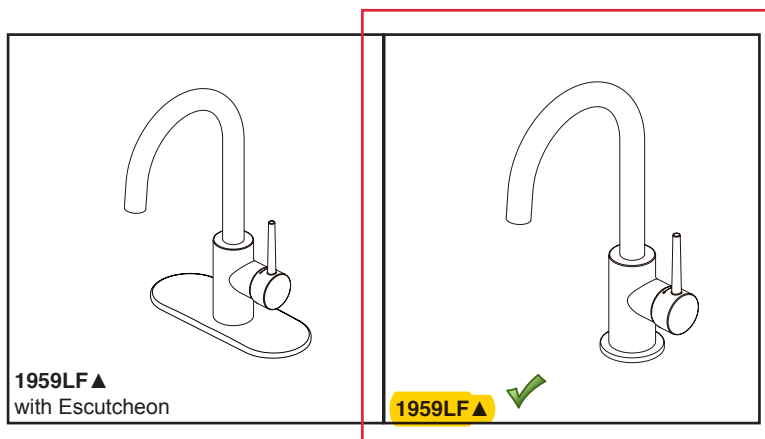
Location:

Quote #:

Faucet Model #:

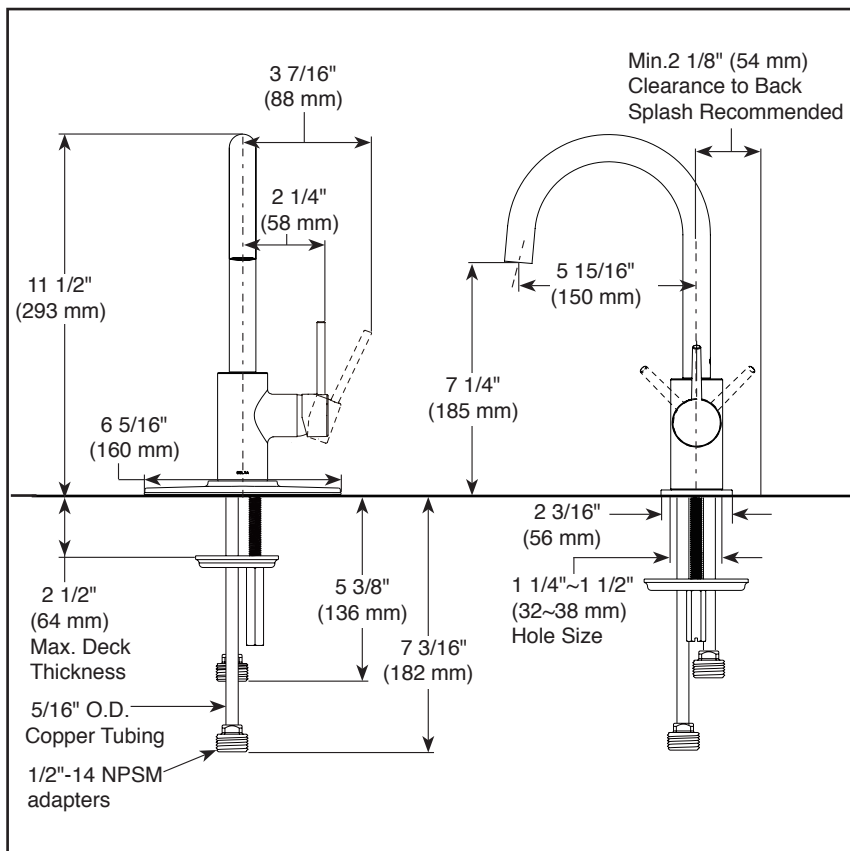
Drillings Required:

Notes:



Submitted Model No.: _____

Specific Features: _____



▲ Designate proper finish suffix



see what Delta can do™

BAR & PREP SINK FAUCETS

- Contemporary
- Single Handle Deck Mount


STANDARD SPECIFICATIONS

- One or three hole mount (escutcheon optional, not included)
- Max flow rate 1.5 gpm @ 60 psi, 5.7 L/min @ 414 kPa
- Solid brass fabricated body
- Spout rotates 120°
- Hot/Cold logo on handle to indicate temperature
- Ceramic disc cartridge
- 5/16" staggered copper supply lines with 1/2" adapters
- ADA compliant lever handle
- Order RP77702 for optional escutcheon
- Order RP1001 for coordinating soap dispenser

WARRANTY

- Parts and Finish - Lifetime limited warranty; or for commercial purchasers, 10 years for multi-family residential (apartments and condominiums) and 5 years for all other commercial uses, in each case from the date of purchase.
- Electronic Parts and Batteries (if applicable) - 5 years from the date of purchase; or for commercial purchasers, 1 year from the date of purchase. No warranty is provided on batteries.

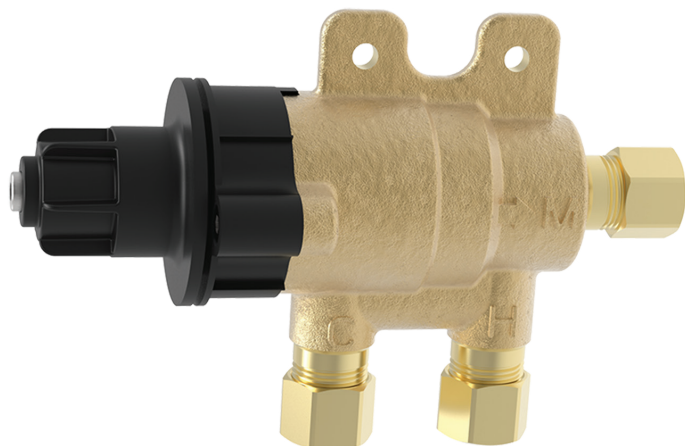
COMPLIES WITH:

- ASME A112.18.1 / CSA B125.1
-  Indicates compliance to ICC/ANSI A117.1

Delta reserves the right (1) to make changes in specifications and materials, and (2) to change or discontinue models, both without notice or obligation. Dimensions are for reference only. See current full-line price book or www.deltafaucet.com for finish options and product availability.

Delta Faucet Company

55 E. 111th Street, Indianapolis, IN 46280
350 South Edgeware Road, St. Thomas, ON N5P 4L1
© 2019 Delta Faucet Company



Model 570 Thermostatic Mixing Valve for Point of Use Controlled Fixtures Unit No. 86820

CAPACITIES – MODEL 570-3/8"

Pressure Drop PSI	5	10	20	40
Valve Number	Capacity			
570-GPM	3	4	5	6.5
570-LPM	11	15	19	25

The mixing valve for point of use mixing fixtures shall be a lead free brass thermostatic mixing valve. The mixing valve shall be 3/8" Compression Fit. The mixing valve shall have a spindle to adjust outlet temperature. The mixing valve shall have internal checks. The mixing valve shall be Lawler model 570.

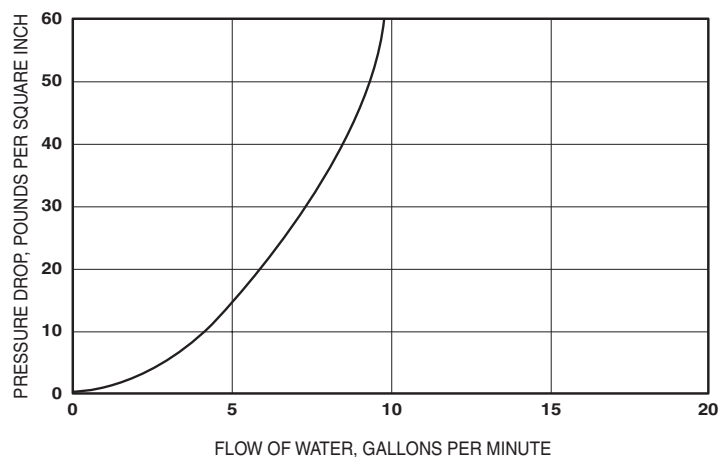
Specifications

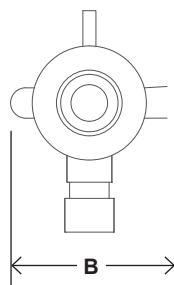
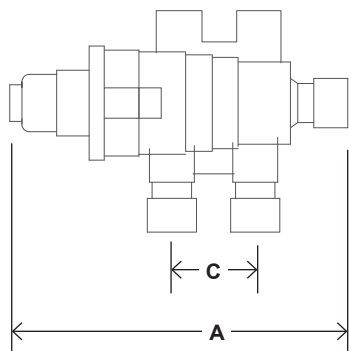
- Outlet temperature range: 95-115°F (35-46°C).
- Temperature, hot supply: 180°F max. (91°C).
- Temperature, cold supply: 40-80°F (4-27°C).
- Temperature stability (nominal): ±5°F (±3°C).
- Temperature differential (between hot supply and outlet temperature): 10°F (11°C).
- Hydrostatic pressure: 125 psi max. (1000 kPa).
- Permitted supply pressure variation: ±20%.
- Flow rate @ 45psi pressure loss: 7 gpm (26L/min).
- Flow rate, minimum: .25 gpm (4L/min).
- Flow rate, maximum: 8 gpm (30L/min).

Benefits

- Protects against scalding and chilling.
- Offers choice of temperature settings from 95° through 115°F.
- Easy installation.
- Backed by Lawler's One Year Warranty.

FLOW CAPACITIES - MODEL 570





Model 570 Unit No. 86820

Temperature Adjustment

To adjust the mixed outlet temperature of the valve, remove the cap to gain access to the adjusting spindle. The spindle should be rotated-clockwise to reduce the temperature, counter-clockwise to increase the temperature until the desired set point is reached.

DIMENSIONS

Valve Number	A	B	C
570	4-7/8"	1-3/4"	1-1/8"

Dimensions are for reference purposes only. For rough-in dimensions please refer to Lawler's Revit/BIM models found at temperedwater.com.

Inlets & outlet are 3/8" compression fittings.

Fitting the Valve

The mixed water outlet from the valve should be used to supply outlets used primarily for personal hygiene purposes.

It is recommended that the valve is installed as close as possible to the point of use; however, it may be fitted anywhere on the hot water supply pipe.



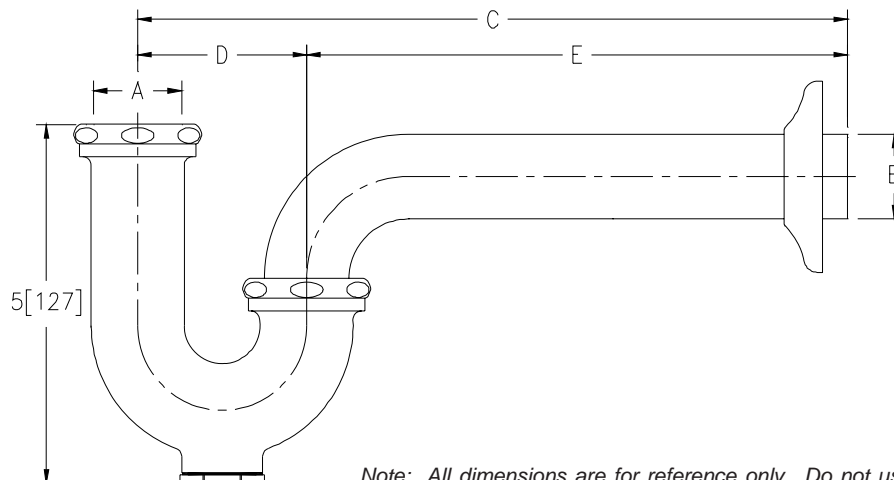
SEMI-CAST P-TRAPS WITH WALL BEND

Z8700-PC TO Z8708-PC

TAG



Engineering Specification: Zurn Z8700-PC to Z8708-PC. – Chrome-plated cast brass (copper alloy) body P-trap with cleanout, tubular brass wall bend as specified, die-cast nuts, and shallow escutcheon with compression inlet.



Note: All dimensions are for reference only. Do not use for pre-plumbing.

PRODUCT NUMBER	A INLET in[mm]	B OUTLET in[mm]	GAUGE	DIMENSIONS			MASTER CARTON	WEIGHT CARTON [lbs]
				C in[mm]	D in[mm]	E in[mm]		
Z8700-PC	1 1/4[32]	1 1/4[32]	17	10[254]	2 1/2[64]	7 1/2[191]	12	24
Z8700-8-PC	1 1/4[32]	1 1/4[32]	17	11[279]	2 1/2[64]	8 1/2[216]	12	24
Z8700-15-PC	1 1/4[32]	1 1/4[32]	17	15[381]	2 1/2[64]	12 1/2[318]	18	40
Z8701-PC	1 1/4[32]	1 1/2[38]	17	10 1/2[267]	3[76]	7 1/2[191]	12	24
Z8701-9-PC	1 1/4[32]	1 1/2[38]	17	12[305]	3[76]	9[229]	12	24
Z8701-15-PC	1 1/4[32]	1 1/2[38]	17	15[381]	3[76]	12[305]	18	42
Z8702-PC*	1 1/2[38]	1 1/2[38]	17	10 1/2[267]	3[76]	7 1/2[191]	12	24
Z8702-9-PC*	1 1/2[38]	1 1/2[38]	17	12[305]	3[76]	9[229]	12	24
Z8702-15-PC*	1 1/2[38]	1 1/2[38]	17	15[381]	3[76]	12[305]	18	42
Z8703B-PC**	1 1/2[38]	2[51]	17	12 1/2[318]	3 1/2[89]	9[229]	6	18
Z8704B-PC**	2[51]	2[51]	17	12 1/2[318]	3 1/2[89]	9[229]	6	18
Z8706-PC	1 1/4[32]	1 1/4[32]	20	10[254]	2 1/2[64]	7 1/2[191]	12	24
Z8707-PC	1 1/4[32]	1 1/2[38]	20	10 1/2[267]	3[76]	7 1/2[191]	12	24
Z8708-PC*	1 1/2[38]	1 1/2[38]	20	10 1/2[267]	3[76]	7 1/2[191]	12	24

OPTIONAL ACCESSORIES

Suffix

Description

- B Brass Nuts
- BX Box Escutcheon
- CE Cast Brass Escutcheon with Setscrew
- D Deep Escutcheon (Note = not available for Z8703B-PC and Z8704B-PC)
- J Metal to Metal Ground Joint Connection
- WC Waste Connections - Compression
- 15 15[381] C Dim. 1 1/4[32] and 1 1/2[38] Only
- 18 18[457] C Dim. 1 1/4[32] and 1 1/2[38] Only

* COMES WITH OPTIONAL 1-1/2" x 1-1/4" REDUCTION POLY-WASHER FOR INLET

** SHIPPED WITH BRASS NUTS UNLESS OTHERWISE SPECIFIED

ZURN INDUSTRIES, LLC ♦ COMMERCIAL BRASS OPERATION ♦ 2640 SOUTH WORK STREET ♦ FALCONER NY 14733

Phone: 1-800-997-3876 ♦ Fax: 1-919-775-3541 ♦ www.zurn.com

In Canada: ZURN INDUSTRIES LIMITED ♦ 3544 Nashua Drive ♦ Mississauga, Ontario L4V1L2 ♦ Phone: 905/405-8272 Fax: 905/405-1292



The new degree of comfort.®

Commercial Electric
Tankless Electric Water Heaters

Rheem® Thermostatic Tankless Electric Water Heater

Applications

- Handwashing
- Kitchen, bar, utility sinks
- Fixed or variable flow
- Ideal for multiple sensor or metering faucets

Performance Features

- Self-diagnostics with intelligent controls actively protect heater in installed environment
- SafeStart™ technology engages upon start-up to help avoid dry-fire occurrence
- Industry leading low flow activation at 0.2 GPM
- Digital LED display with accessible user interface communicates system status and heater operation feedback
- Silent operation on all models except for RTEH012240T
- Mounts in any orientation for a flexible installation
- Compact size fits almost anywhere; suitable for ADA compliant facilities

- Only one input line, hot or cold, needed for an easy installation
- Designed to deliver hot water to a single pipe faucet, mixing valves or mixing faucets
- Integral 3/8" compression fittings; no soldering or sweat connections required
- No T&P relief valve needed (check local codes); Ready to go, right out-of-the-box
- Save water and time by installing unit at the point-of-use
- Control system activates heater only on demand
- High temperature limit switch enables safe operation
- Active energy management with power modulation allows for thermostatic accuracy

Warranty

- 5-Year limited warranty on leaks, 1-year on parts

See Residential Warranty Certificate for complete information



Thermostatic Tankless Electric



Tested and certified by the Water Quality Association against NSF/ANSI 372 for lead free compliance.

**Note:** For optimum performance, mounting location should be within 2 feet of fixture.

Suggested Specification

Tankless water heater shall be a Rheem model number RTEH_____T.

Unit shall have ABS-UL 94-5VA rated cover. Unit shall have 0.2 GPM turn on. Unit shall allow mounting in any direction. Element shall be replaceable cartridge insert. Unit shall have replaceable filter in the inlet connector. Element shall be iron free, Nickel Chrome material. Tankless water heater to utilize complex algorithm, actively managing power application to real time system demand. Integrated flow meter, along with inlet and outlet temperature sensors provide data which allows the unit to instantly adapt to variations in input parameters. Heater shall be fitted with 3/8" compression fittings to eliminate need for soldering. Maximum operating pressure of 150 PSI. Accessible diagnostic features to include error/fault display. Hot water storage tanks prohibited. Unit shall be Rheem or approved equal.

Tankless water heater user interface must have the following capabilities:

- Selectable display including Celsius /Fahrenheit, set point, flow rate, inlet temperature, outlet temperature, and power factor

- Capable of displaying flow rate in gallons per minute & liters per minute
- Diagnostic features to include error/fault display
- Control board must maintain error/fault history of 5 events

Product Specifications

Dimensions:	9.75" H x 5.25" W x 3" D
Weight:	4 lb
Cover:	ABS-UL rated 94-5VA
Color:	Cool Grey
Adj. Temperature Range:	70°F-140°F
Min. Dynamic Operating Pressure:	35 PSI
Max. Dynamic Operating Pressure:	150 PSI
Element:	Replaceable nichrome cartridge insert
Fittings:	3/8" compression fittings
UL listed file number:	E86887

U.S. Patent #'s: 4,762,980 and 4,960,976



INTEGRATED HOME COMFORT



The new degree of comfort®



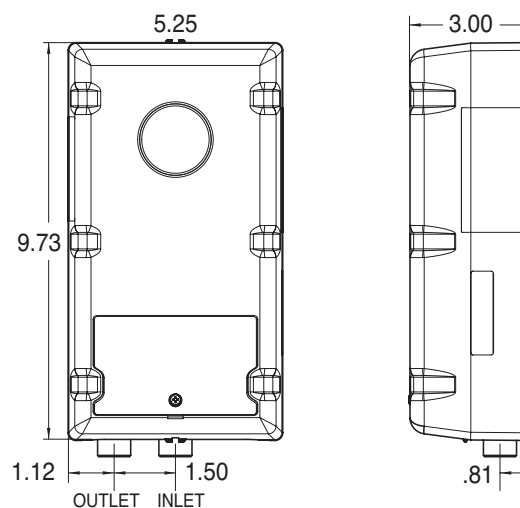
Rheem® Thermostatic Tankless Electric Water Heater Specifications

DESCRIPTION	FEATURES				TEMPERATURE RISE °F			
MODEL NUMBER	kW	AMPS	RECOMMENDED WIRE SIZE (75° C/CU)	TURN ON (GPM)	0.35 GPM	0.5 GPM	1.0 GPM	2.0 GPM
VOLTS 120								
RTEH1812T**	1.8	15	14 AWG	0.2	35°	25°	12°	6°
RTEH2412T**	2.4	20	14 AWG	0.2	47°	33°	16°	8°
RTEH3012T**	3.0	25	12 AWG	0.2	59°	41°	20°	10°
RTEH3512T**	3.5	29	10 AWG	0.2	68°	48°	24°	12°
VOLTS 208 Single Phase								
RTEH3208T**	3.0	15	14 AWG	0.2	59°	41°	20°	10°
RTEH4208T**	4.1	20	14 AWG	0.2	80°	56°	28°	14°
RTEH8208T**	8.3	40	8 AWG	0.2	†	†	57°	28°
VOLTS 240*								
RTEH35T**	3.5	15	14 AWG	0.2	68°	48°	24°	12°
RTEH35T (derated 208V perf.)	2.7	13	14 AWG	0.2	53°	37°	18°	9°
RTEH48T**	4.8	20	14 AWG	0.2	94°	66°	33°	16°
RTEH48T (derated 208V perf.)	3.6	17	14 AWG	0.2	70°	49°	25°	12°
RTEH55T**	5.5	23	12 AWG	0.2	107°	75°	38°	19°
RTEH55T (derated 208V perf.)	4.1	20	12 AWG	0.2	80°	56°	28°	14°
RTEH65T**	6.5	27	12 AWG	0.2	†	89°	44°	22°
RTEH65T (derated 208V perf.)	4.9	24	12 AWG	0.2	96°	67°	33°	17°
RTEH75T**	7.5	32	10 AWG	0.2	†	102°	51°	26°
RTEH75T (derated 208V perf.)	5.6	27	10 AWG	0.2	109°	76°	38°	19°
RTEH95T**	9.5	40	8 AWG	0.2	†	†	65°	32°
RTEH95T (derated 208V perf.)	7.0	34	8 AWG	0.2	†	96°	48°	24°
RTEH012240T**	11.5	48	8 AWG	0.2	†	†	79°	39°
RTEH012240T (derated 208V perf.)	8.7	42	8 AWG	0.2	†	†	59°	30°
VOLTS 277 Single Phase								
RTEH3277T	3.0	11	14 AWG	0.2	59°	41°	20°	10°
RTEH4277T	4.1	15	14 AWG	0.2	80°	56°	28°	14°
RTEH60T	6.0	22	12 AWG	0.2	†	82°	41°	20°
RTEH80T	8.0	29	10 AWG	0.2	†	109°	55°	27°
RTEH90T	9.0	33	10 AWG	0.2	†	†	61°	31°
RTEH100T	10.0	36	8 AWG	0.2	†	†	68°	34°

* 240V units can be used on 208V single phase with 25% reduced temperature output. Please note per UL standards the rating plate and installation instructions will all be according to a 240V applied voltage. Check with local officials prior to derating the electrical infrastructure.

**Indicates evaluation and compliance to either Underwriters Laboratories (UL) or Intertek (ETL) under CAN/CSA-C22.2 No. 64/No. 88.

† Temperature electronically limited to factory preset not to exceed temperature.



In keeping with its policy of continuous progress and product improvement, Rheem reserves the right to make changes without notice.

Rheem Water Heating • 1115 Northmeadow Parkway, Suite 100
Roswell, Georgia 30076 • www.rheem.com

Rheem Canada Ltd./Ltée • 125 Edgeware Road, Unit 1
Brampton, Ontario L6Y 0P5 • www.rheem.com



INTEGRATED HOME COMFORT