

- GENERAL NOTES**
- ALL LIGHT FIXTURES TO BE INDEPENDENTLY SUSPENDED REGARDLESS IF LAY-IN, SURFACE MOUNTED OR CHAIN HUNG. CO-ORDINATE FINAL LIGHTING LAYOUTS WITH SOM ARCHITECTURAL REFLECTED CEILING PLANS PRIOR TO ROUGH-IN AND INSTALLATION.
  - REFER TO ROOM FINISH SCHEDULE FOR CEILING HEIGHTS AND FINISHES.
  - COSMETICS COUNTERS c/w BUILT-IN LIGHTING FIXTURES. ELECTRICAL CONTRACTOR SHALL PROVIDE FINAL HOOKUP FOR QUANTITY OF LIGHT FIXTURES, SEE MERCHANDISING PLAN OR S.O.M. CO-ORDINATOR.
  - QUANTITY OF EMERGENCY LIGHTING FIXTURES SHOWN IS THE MINIMUM REQUIRED. ADDITIONAL FIXTURES MAY BE REQUIRED BY LOCAL AUTHORITIES. INCLUDE IN THIS CONTRACT FOR SUPPLY WIRING AND INSTALLATION OF 9 ADDITIONAL TWIN HEADS. IF NOT USED TURN OVER TO OWNER AS SPARE.
  - CO-ORDINATE SALES AREA LIGHTING WITH ARCHITECTURAL REFLECTED CEILING PLAN PRIOR TO ROUGH-IN AND INSTALLATION.
  - SUPPORT LIGHTING FIXTURES INDEPENDENTLY OF CEILING SUSPENSION SYSTEM.
  - SUPPORT OUTLET AND JUNCTION BOXES INDEPENDENTLY OF CONDUITS RUNNING TO THEM. USE NO.4 TENSQ PATTERN COIL CHAIN PLATED WITH A STRENGTH OF 180 LBS. AS MANUFACTURED BY DOMINION CHAIN CO. OR EQUAL. USE 5" HOOK NO. 6 TYPE WITH A STRENGTH OF 180 LBS.
  - CONTRACTOR TO NOTE THAT THE SALES AREA CEILING CAVITY IS UTILIZED AS A RETURN AIR PLenum. ALL WIRING IN THE RETURN AIR PLenum SPACE IS TO BE INSTALLED IN CONDUIT OR BE FIBER RATED. REMOVE JACKET FROM ANY FIBER CABLES WHICH IS NOT PERMITTED BY CODE. ALL DISCIPLINES INCLUDING AND NOT LIMITED TO DATA COMMUNICATIONS, SECURITY, SOUND AND ELECTRICAL CONTRACTORS ARE TO ADHERE TO THE LOCAL BUILDING CODE AND CURRENT CEC. THE CONTRACTOR IS TO MONITOR THE INSTALLATION OF CABLES IN THE RETURN AIR PLenum CAVITY.

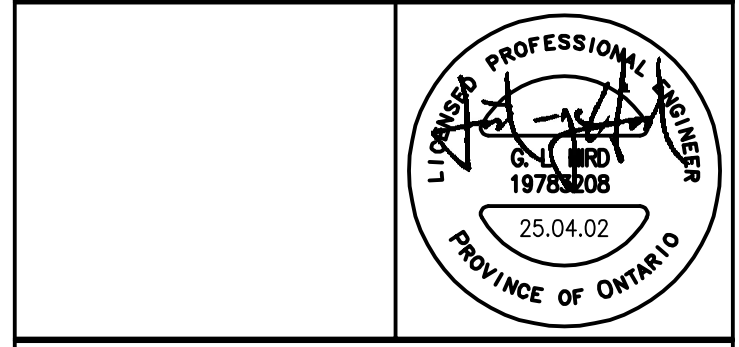
- LIGHTING NOTES**
- NEW LED TRACK LIGHTING TO BE CONNECTED TO EXISTING TRACK LIGHTING CIRCUITS.
  - CONTRACTOR TO ALLOW FOR THE AIMING OF TRACK LIGHT HEADS TO THE SATISFACTION OF THE SOM PROJECT MANAGER. TYPICAL.
  - CONTRACTOR TO CENTRE FIXTURE OVER WELCOME DESK. CONTRACTOR TO SUSPEND THE FIXTURE TO THE HEIGHT OF THE BULKHEAD AT 9'-9" AFF.
  - CONTRACTOR TO SUSPEND THE FIXTURE AT 9'-9" AFF. CONTRACTOR TO COORDINATE FINAL HEIGHT WITH SOM PROJECT MANAGER. CONTRACTOR TO ENSURE THE LIGHTS ARE INSTALLED AT A 30 DEGREE ANGLE. CONFIRM WITH SOM MANAGER PRIOR TO INSTALLATION.
  - PROVIDE NEW EMERGENCY LIGHTING HEADS IN THIS LOCATION. REFER TO SCHEDULE. EXTEND EXISTING EMERGENCY LIGHTING CIRCUIT TO NEW BATTERY LOCATION.
  - REFER TO ROOM FINISH SCHEDULE ON ARCHITECTURAL DRAWINGS FOR FINAL CEILING HEIGHTS AND FINISHES.
  - ALL HOME RUNS FOR LIGHTING CIRCUITS TO BE MINIMUM #10 COPPER.
  - NEW EXIT SIGN TO BE PROVIDED IN THIS LOCATION. REFER TO SCHEDULE. EXTEND EXISTING EMERGENCY LIGHTING CIRCUIT TO NEW LOCATION.

No.	DESCRIPTION	DATE
REVISIONS		

**INTEGRATED engineering**

1930 Blue Heron Drive  
London, ON N6H 5L9  
Tel: 519-472-3688  
Fax: 519-472-4322  
www.integratedengineering.ca  
IE Project No. 7467

1	TENDER	25.04.02
0	PERMIT	25.03.18
No. DESCRIPTION DATE		
ISSUED FOR		



PROJECT:  
**ALTERATIONS TO EXISTING  
RETAIL BUILDING**  
SHOPPERS DRUG MART #630  
FARMVIEW MALL  
1800 SHEPPARD AVENUE EAST, UNIT 2075  
TORONTO, ONTARIO

DATE: MARCH 2025  
DRAWN BY: SM  
CHECKED BY: PO/QLH

DRAWING TITLE:  
**ELECTRICAL CEILING PLAN  
- LIGHTING**