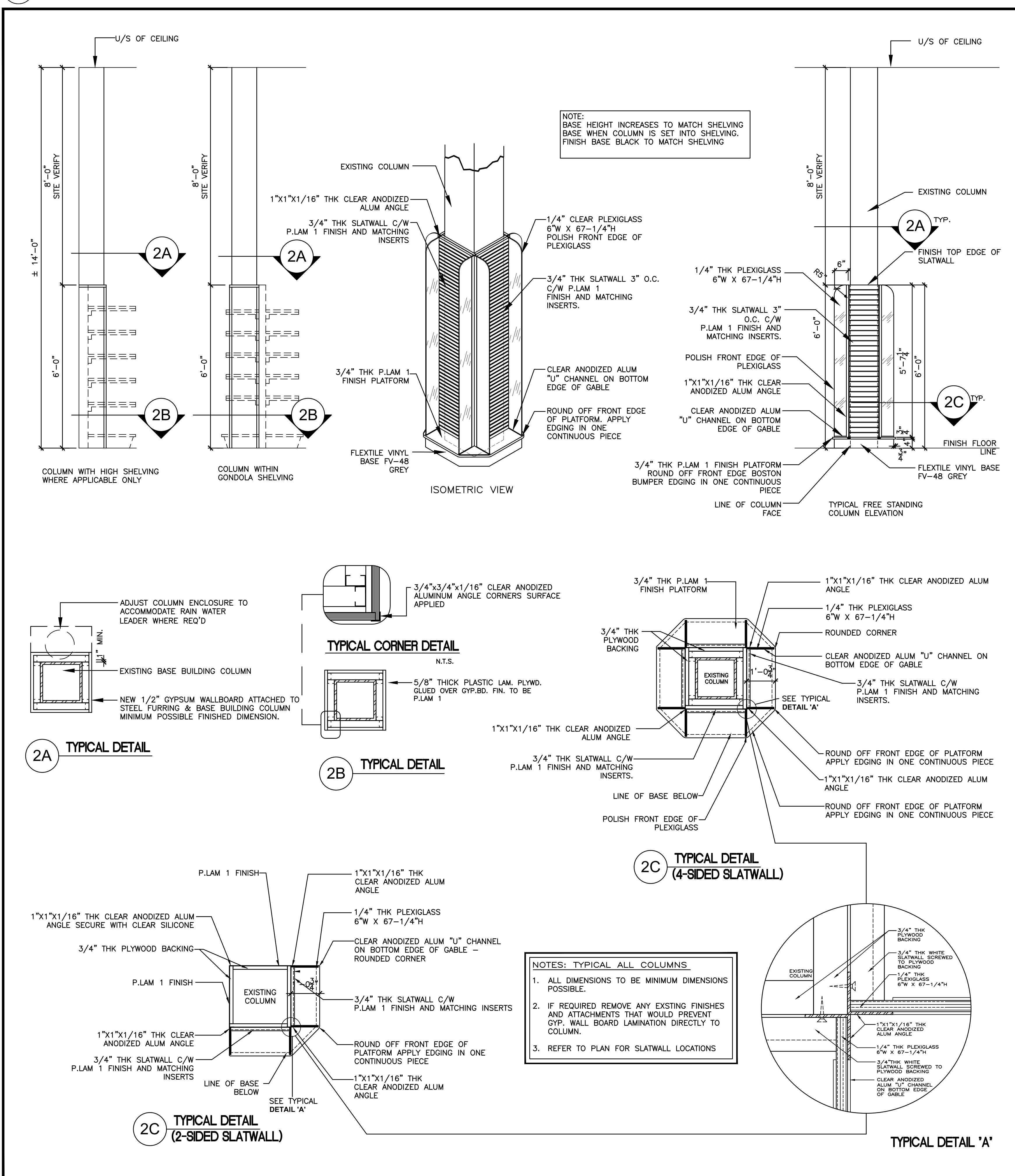
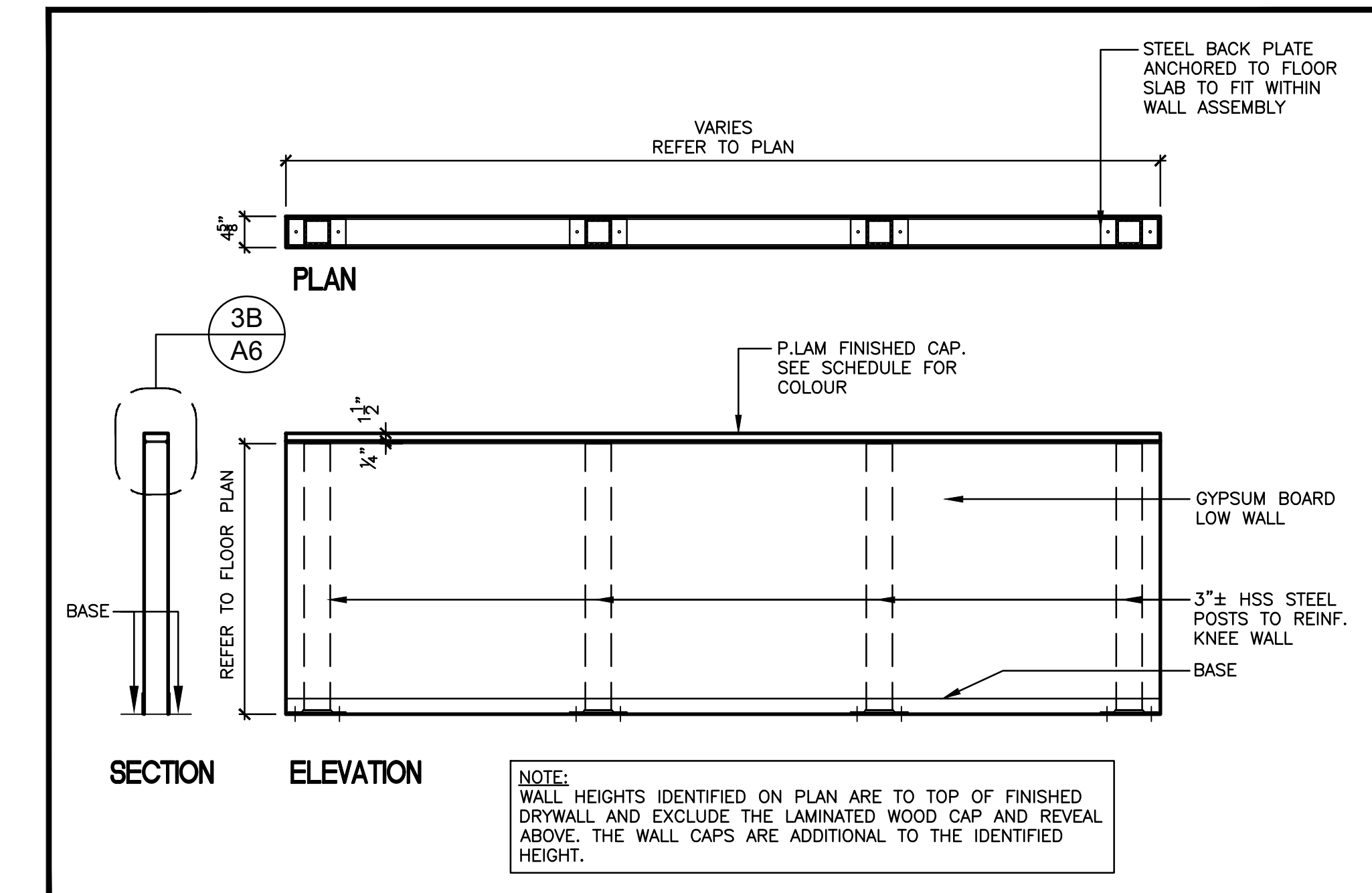


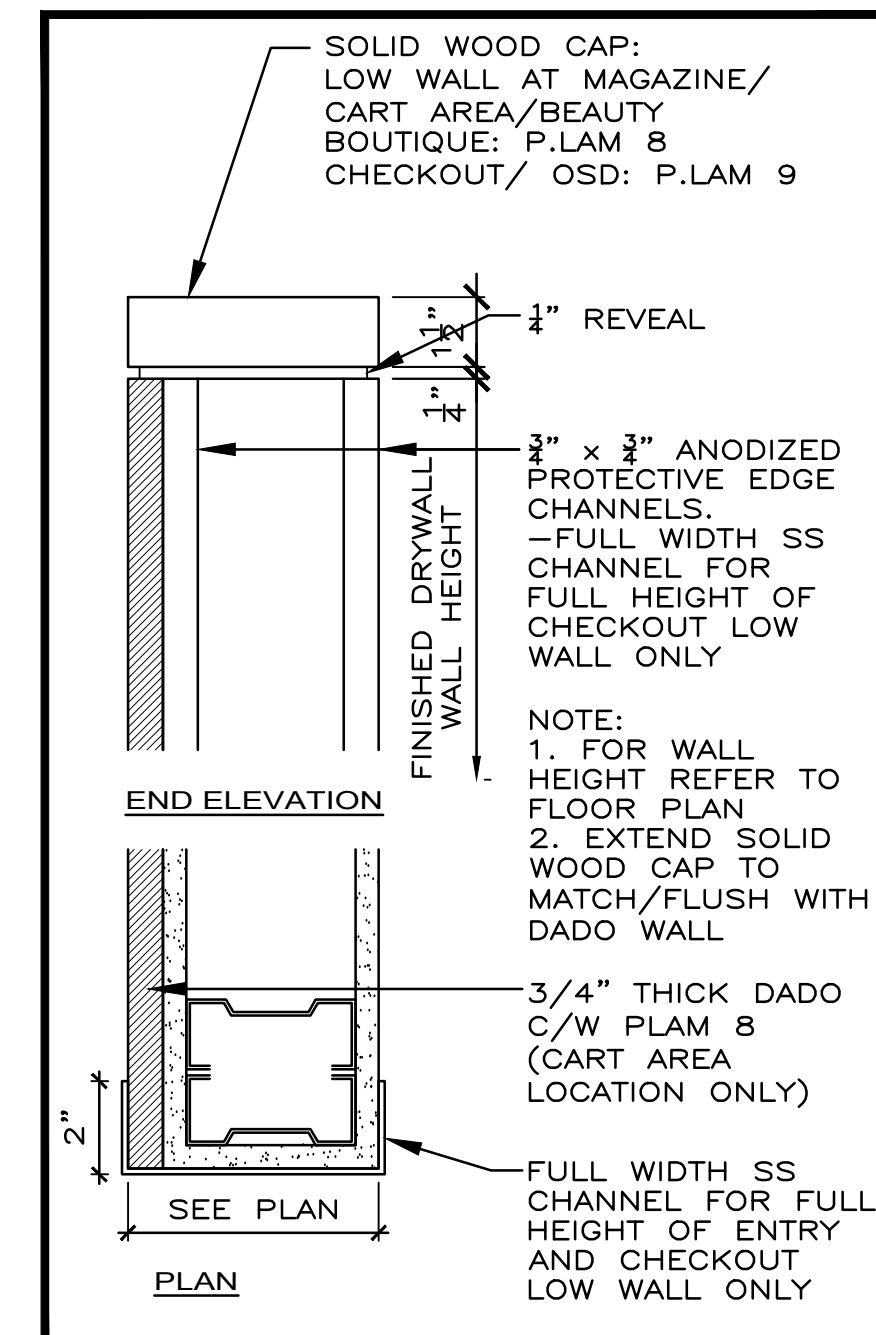
1 MISCELLANEOUS GABLE DETAILS
N.T.S.



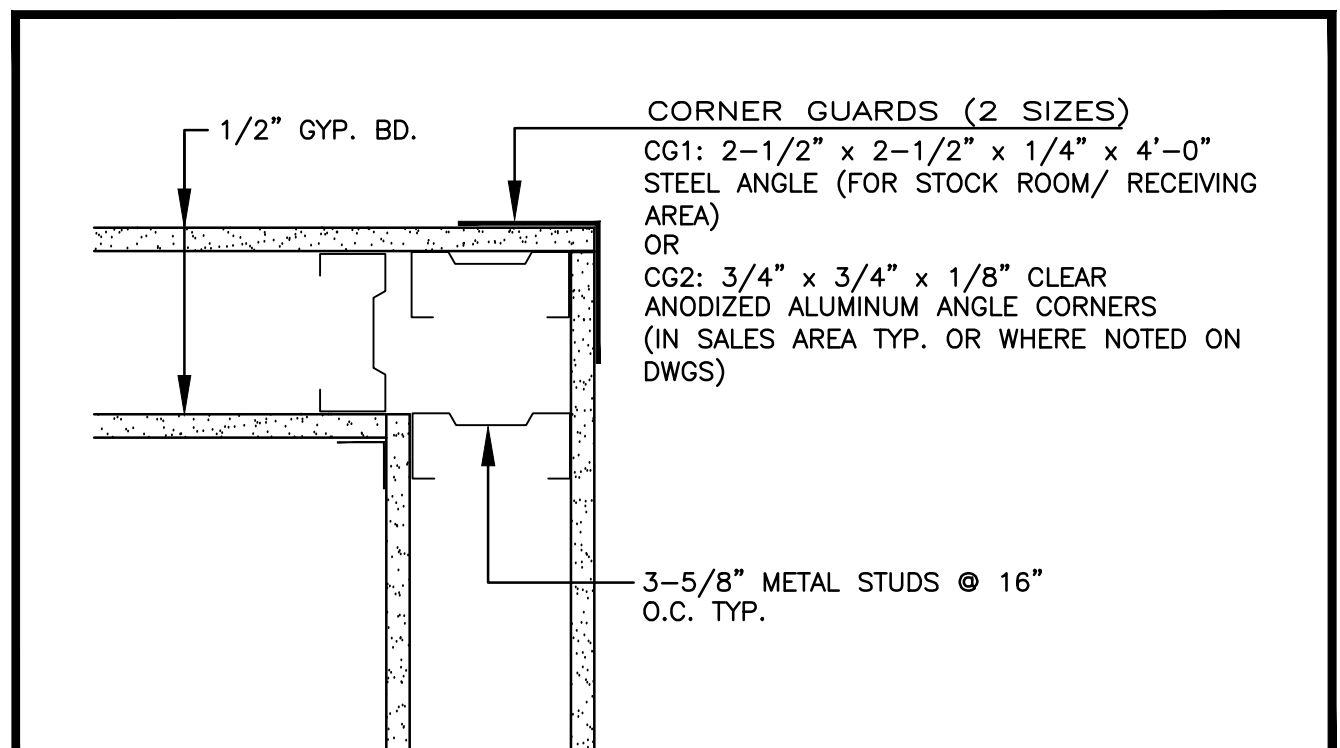
2 COLUMN DETAILS
1/2" = 1'-0"



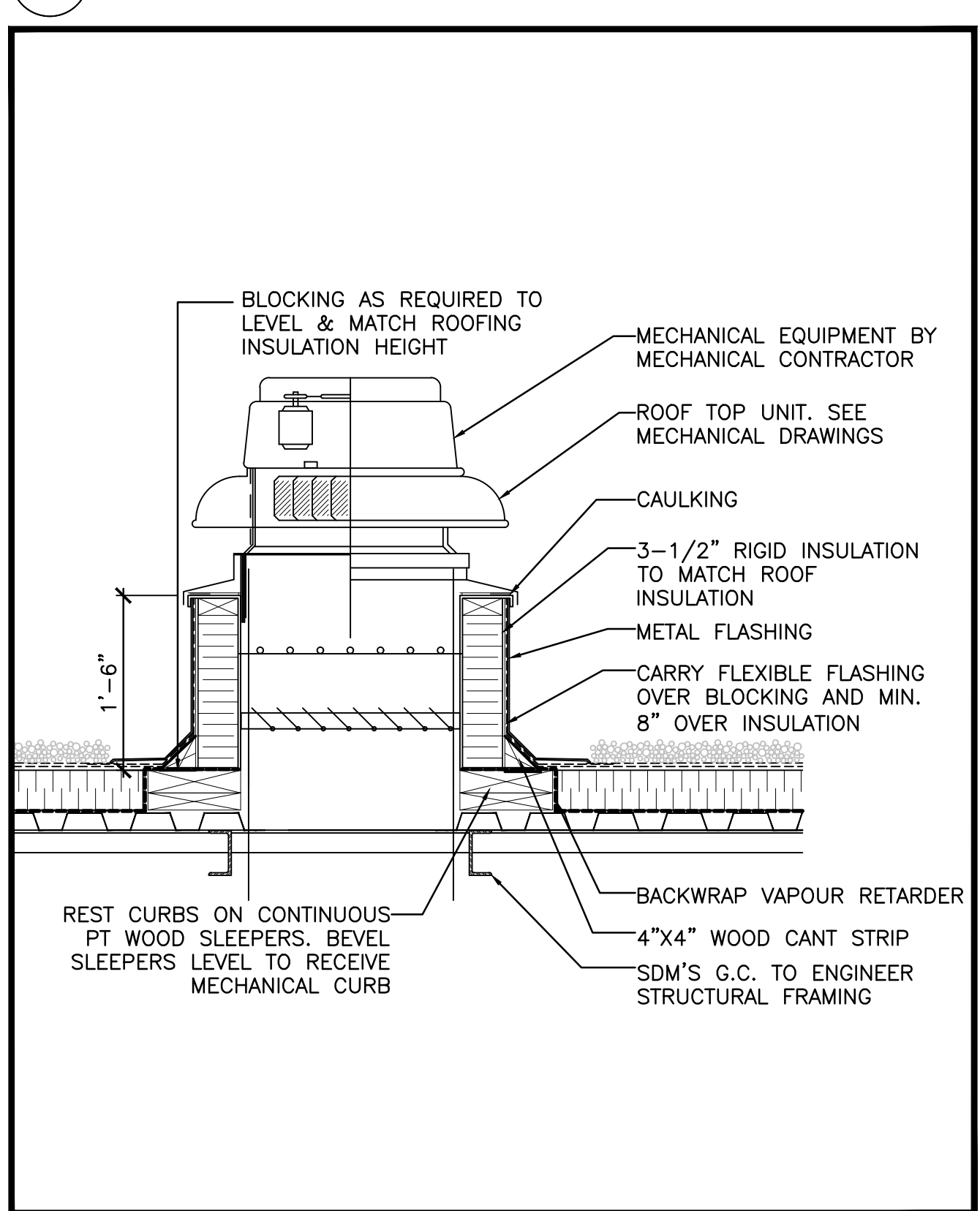
3A TYPICAL LOW WALL DETAIL
1/2" = 1'-0"



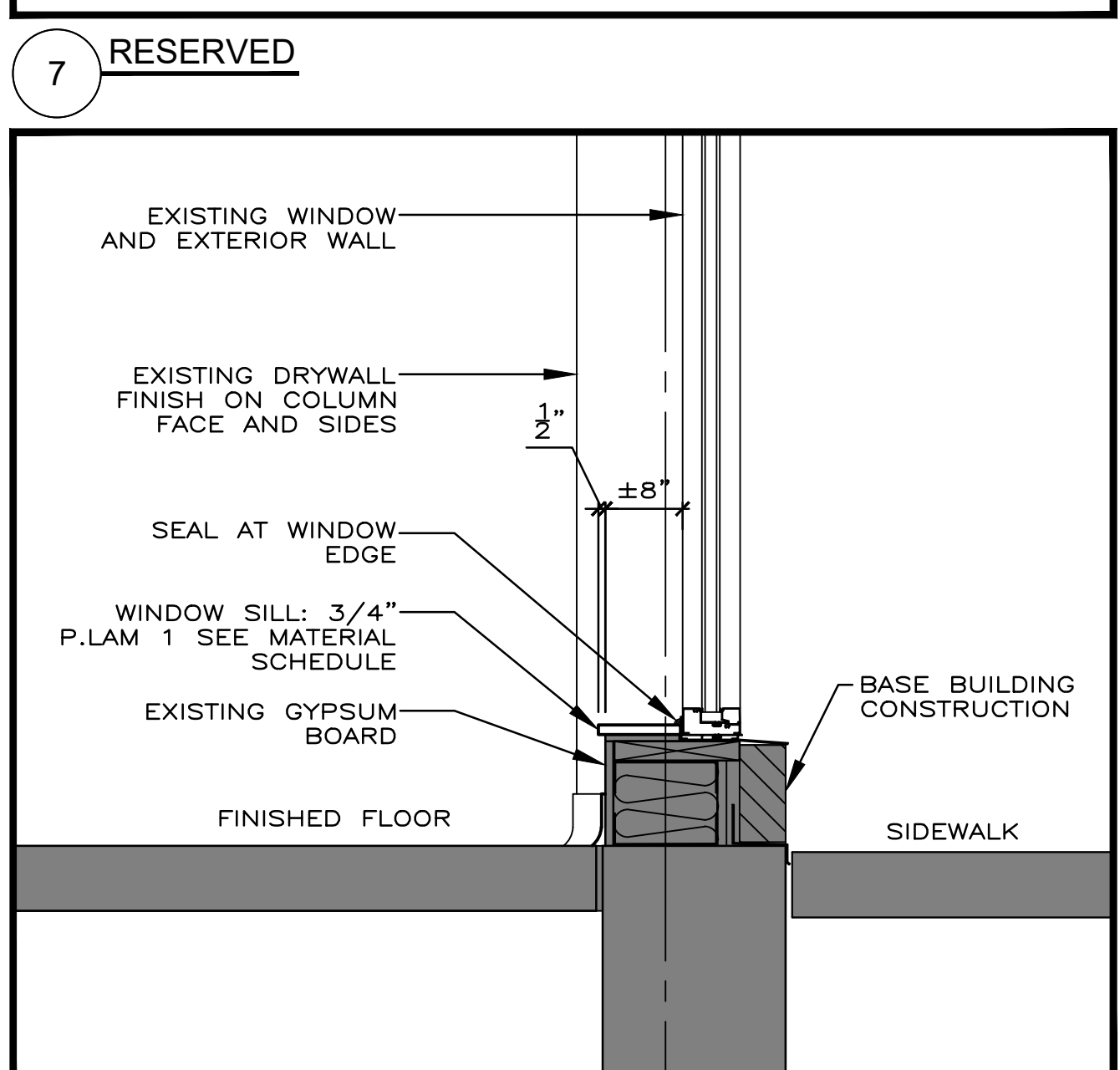
3B TYPICAL CAP DETAIL
3" = 1'-0"



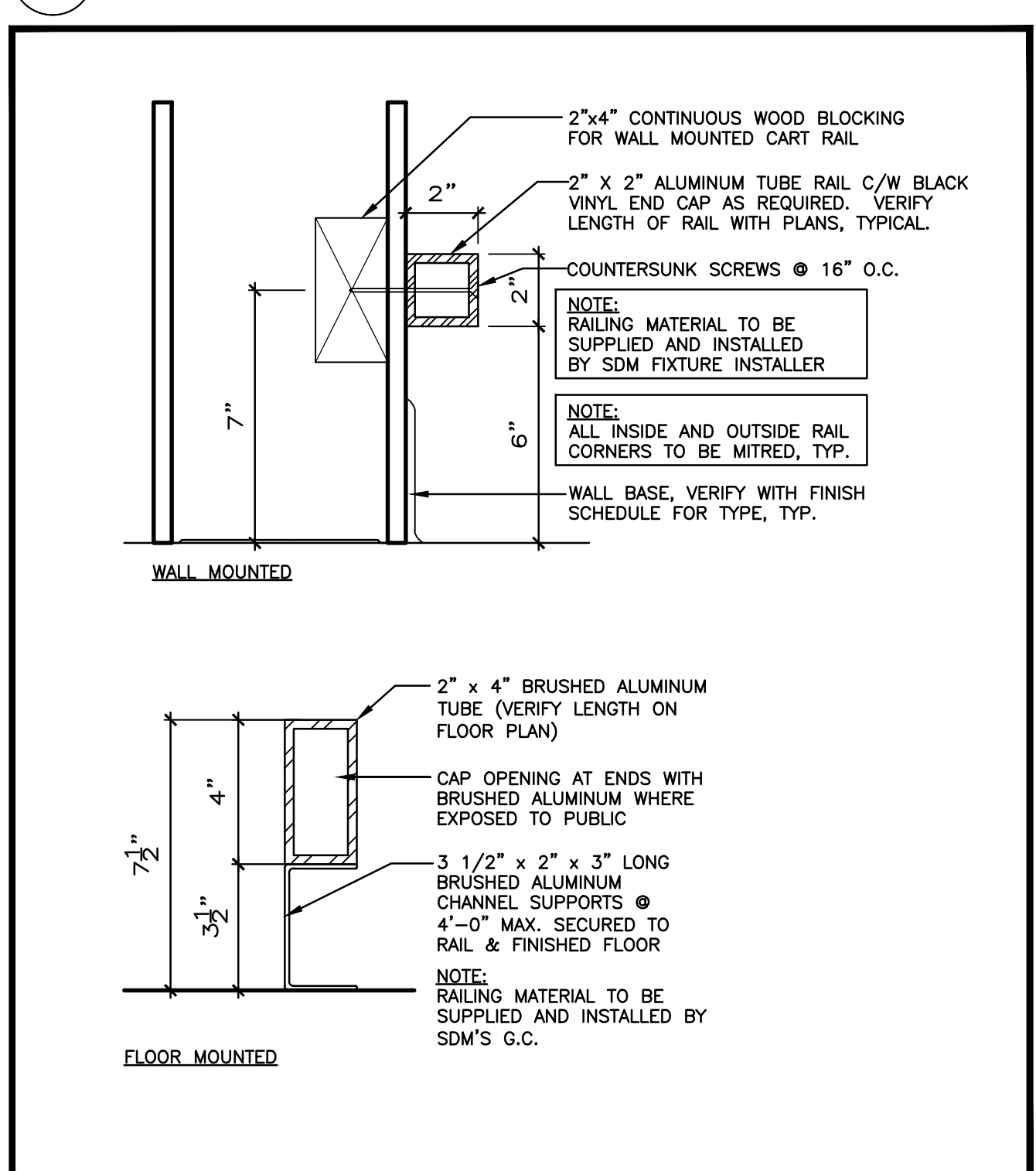
5 CORNER GUARD DETAIL
N.T.S.



6 ROOF CURB FOR FAN EQUIPMENT
1" = 1'-0"



8 WINDOW SILL DETAIL
1" = 1'-0"



9 CART RAIL DETAIL
3" = 1'-0"

THIS DRAWING, AS AN INSTRUMENT OF SERVICE, IS PROVIDED BY AND IS THE PROPERTY OF DANIEL L. CUSIMANO, ARCHITECT.
THE CONTRACTOR MUST VERIFY AND ACCEPT RESPONSIBILITY FOR ALL DIMENSIONS AND CONDITIONS ON SITE AND MUST NOTIFY DANIEL L. CUSIMANO, ARCHITECT, OF ANY VARIATIONS FROM THE SUPPLIED INFORMATION.

THIS DRAWING IS NOT TO BE SCALED.
THE ARCHITECT IS NOT RESPONSIBLE FOR THE ACCURACY OF SURVEY, STRUCTURAL, MECHANICAL, ELECTRICAL, ETC., INFORMATION SHOWN ON THIS DRAWING. REFER TO THE APPROPRIATE CONSULTANT'S DRAWINGS BEFORE PROCEEDING WITH THE WORK.
CONSTRUCTION MUST CONFORM TO ALL APPLICABLE CODES AND REQUIREMENTS OF AUTHORITIES HAVING JURISDICTION.
THE CONTRACTOR WORKING FROM DRAWINGS NOT SPECIFICALLY MARKED "FOR CONSTRUCTION" MUST ASSUME FULL RESPONSIBILITY AND BEAR COSTS FOR ANY CORRECTIONS OR DAMAGES RESULTING FROM HIS WORK.
DRAWINGS/SPECIFICATIONS "ISSUED FOR CONSTRUCTION" ARE TO THE BEST OF OUR KNOWLEDGE AN ACCURATE REPRESENTATION OF DOCUMENTED REVISIONS. IN THE CASE OF ANY DISCREPANCY, OMISSION OR CONFLICT BETWEEN THE "ISSUED FOR CONSTRUCTION" DOCUMENTS AND THE CONTRACT DOCUMENTS, THE CONTRACTOR IS TO PROMPTLY NOTIFY THE CLIENT, ARCHITECT AND ENGINEERS.

PRINT DATE:
2025-04-02

No.	DESCRIPTION	DATE
REVISIONS		

No.	DESCRIPTION	DATE
REVISIONS		

No.	DESCRIPTION	DATE
REVISIONS		

2 ISSUED FOR TENDER 2025-04-02
1 ISSUED FOR BUILDING PERMIT 2025-03-10

No. DESCRIPTION DATE
ISSUED FOR

CUSIMANO ARCHITECT
1800 SHEPPARD AVENUE EAST, UNIT 2075
TORONTO, ONTARIO M2X 1X7
(416) 491-1111

PROJECT:
ALTERATIONS TO EXISTING
RETAIL BUILDING
SHOPPERS DRUG MART #838
ARVUEVUE MALL
1800 SHEPPARD AVENUE EAST, UNIT 2075
TORONTO, ONTARIO

DATE: FEBRUARY 2025 DML: BT: DFD: BT:
DRAWING TITLE: SM: DLO:

MISCELLANEOUS DETAILS

SCALE: AS NOTED
PROJ. NO.: 2025-830

DRAWING NO.: A6.0