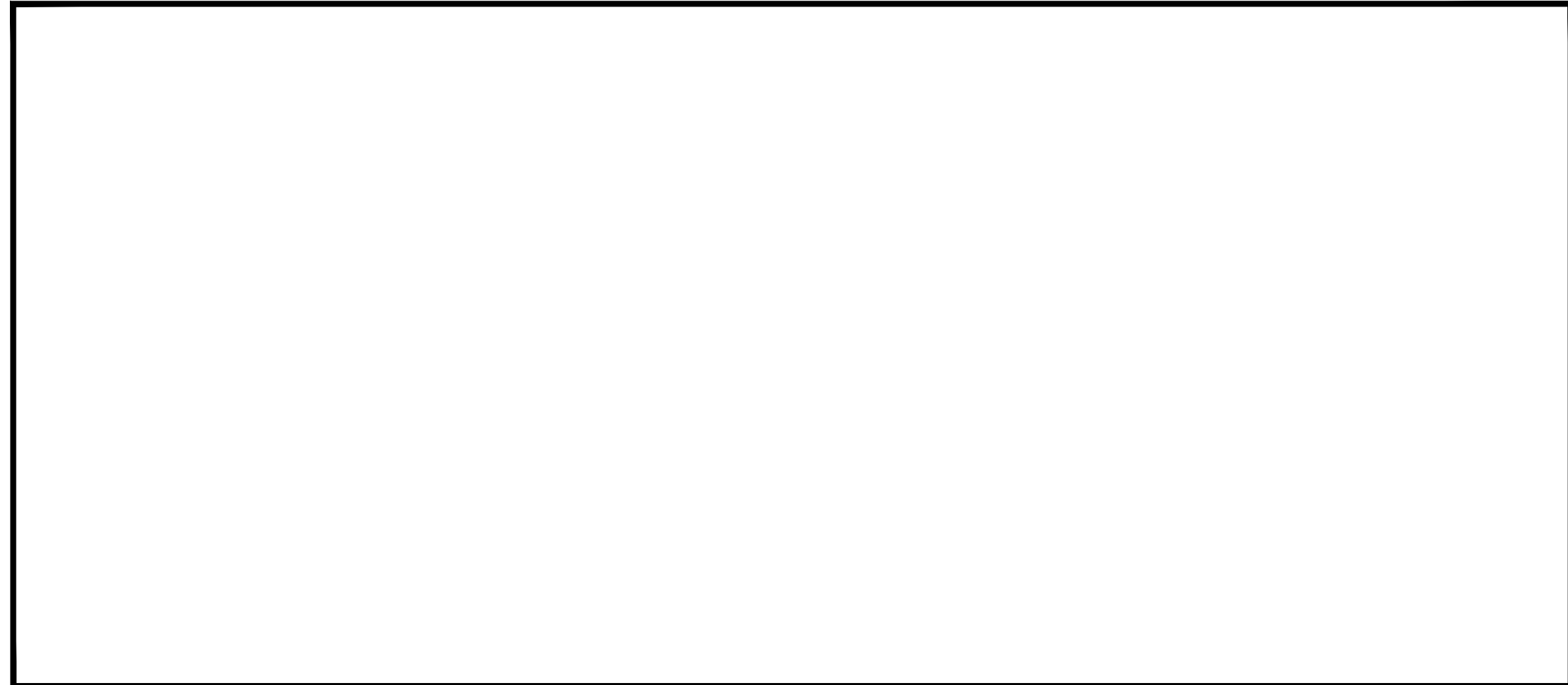
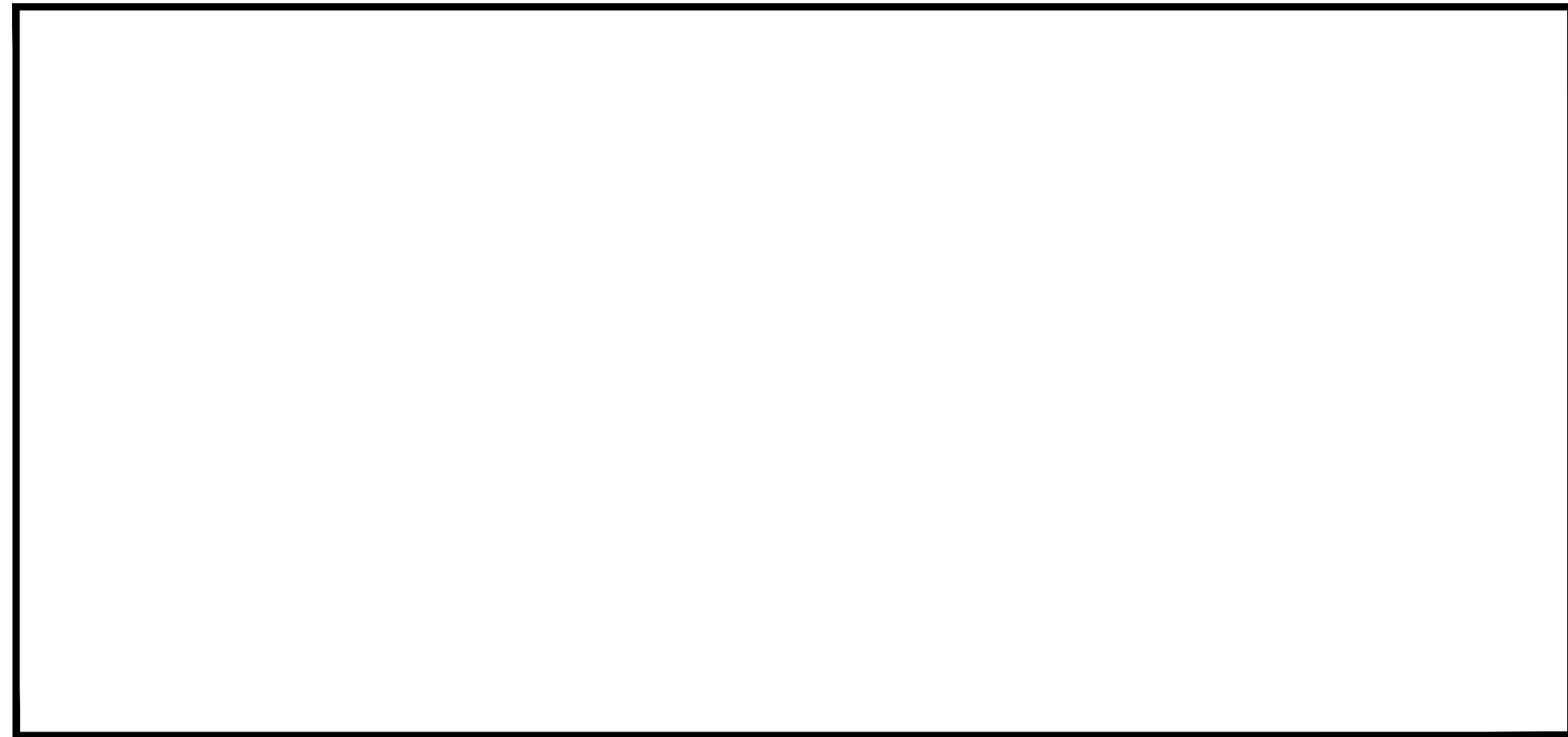


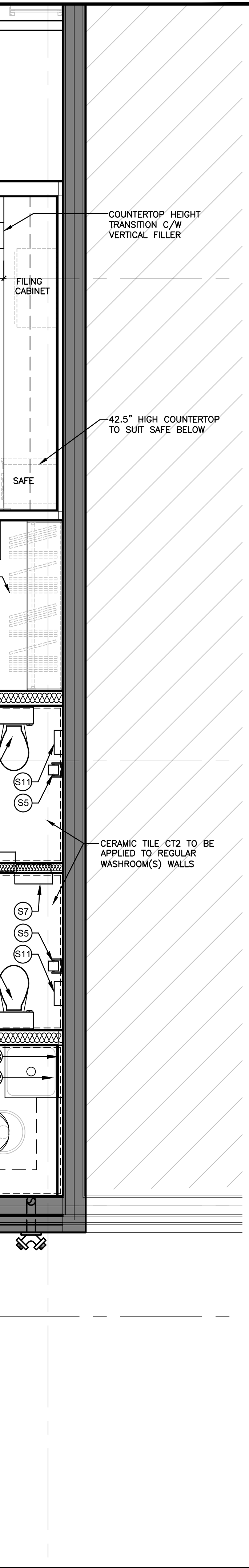
1 WASHROOM, JANITOR'S RM & STORAGE, OFFICE AND STAFF LOUNGE PLAN LAYOUT
1/2" = 1'-0"



6 RESERVED



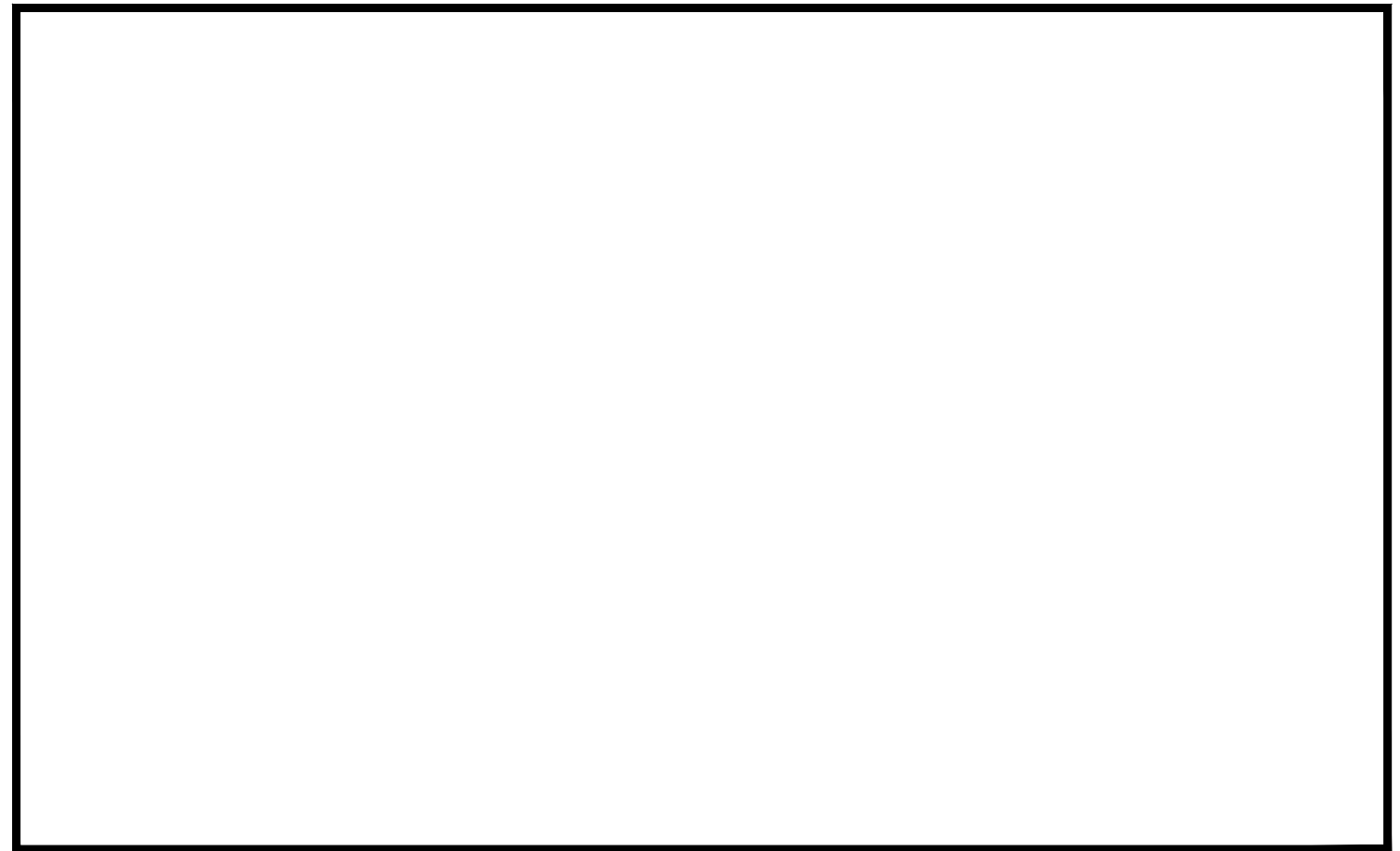
8 RESERVED



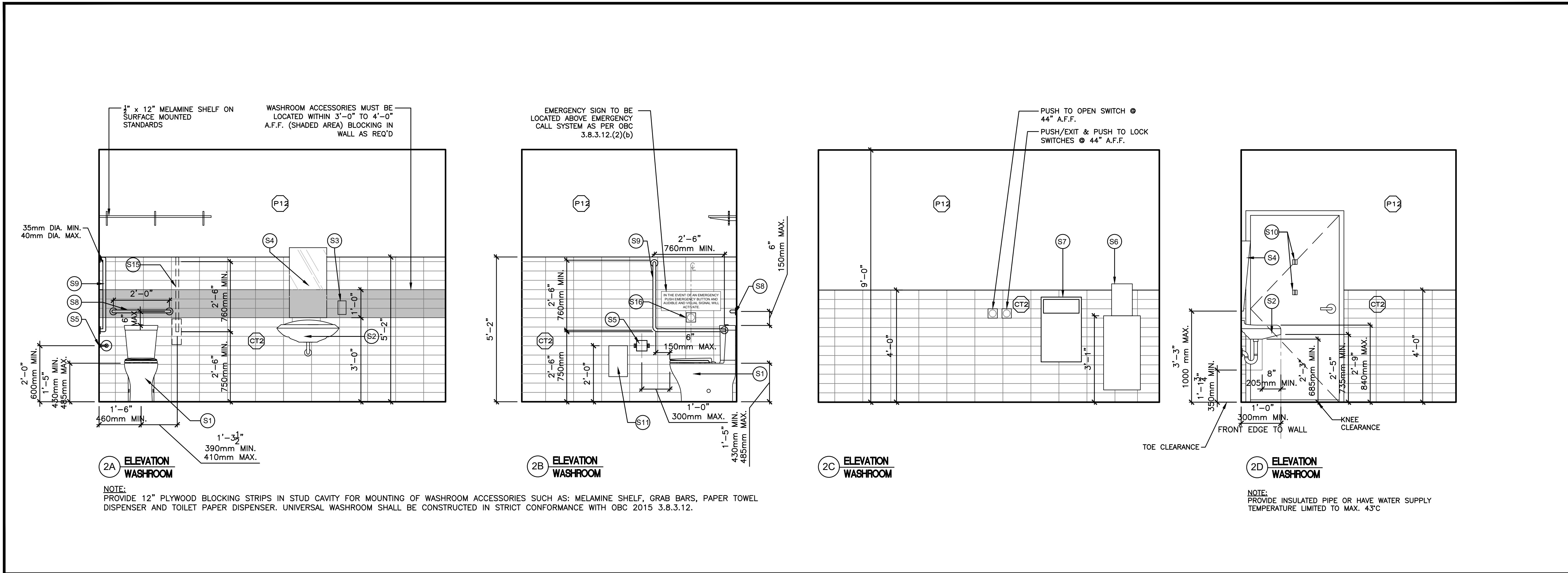
3 JANITOR'S ROOM ELEVATIONS
1/2" = 1'-0"



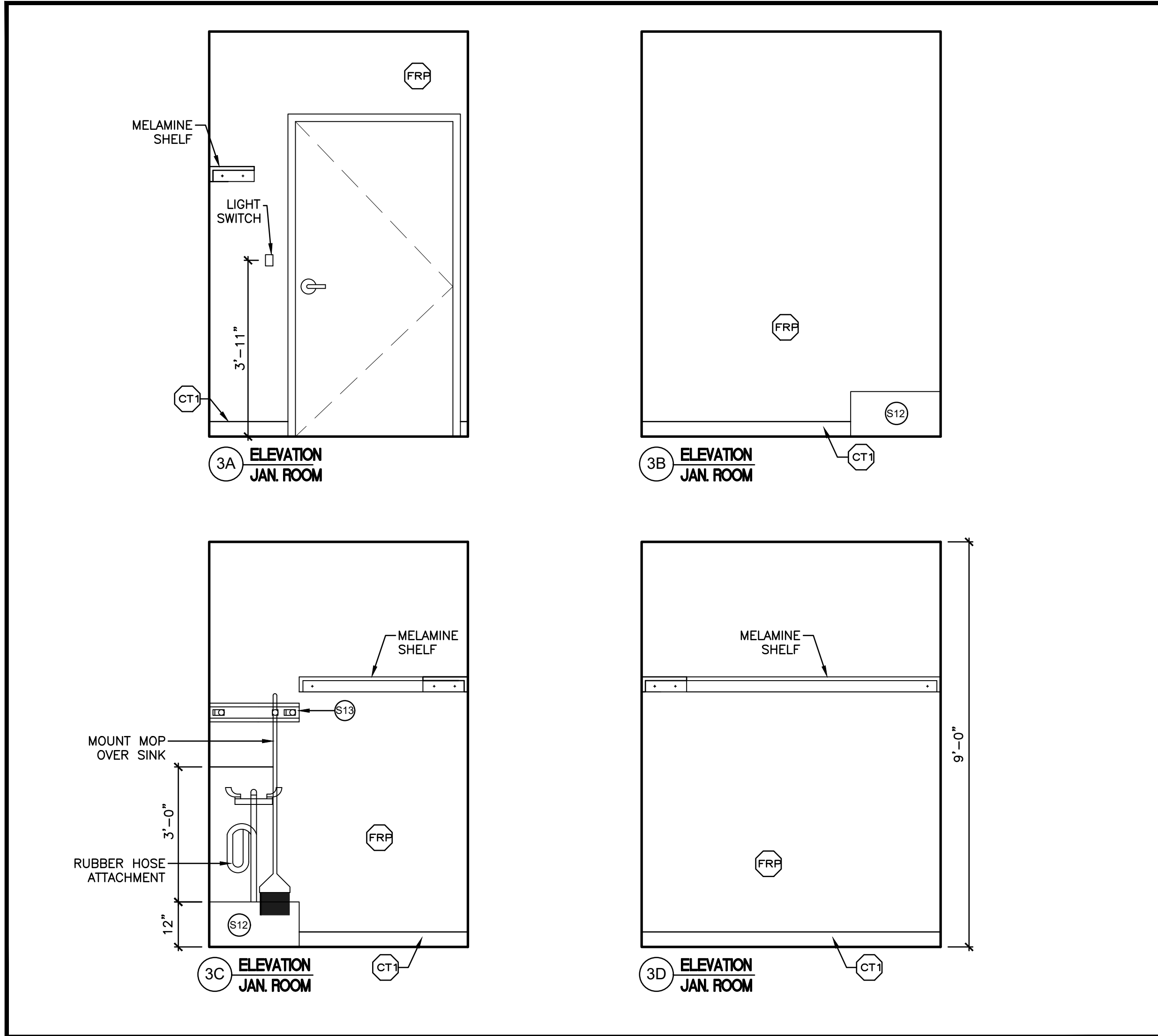
7 RESERVED



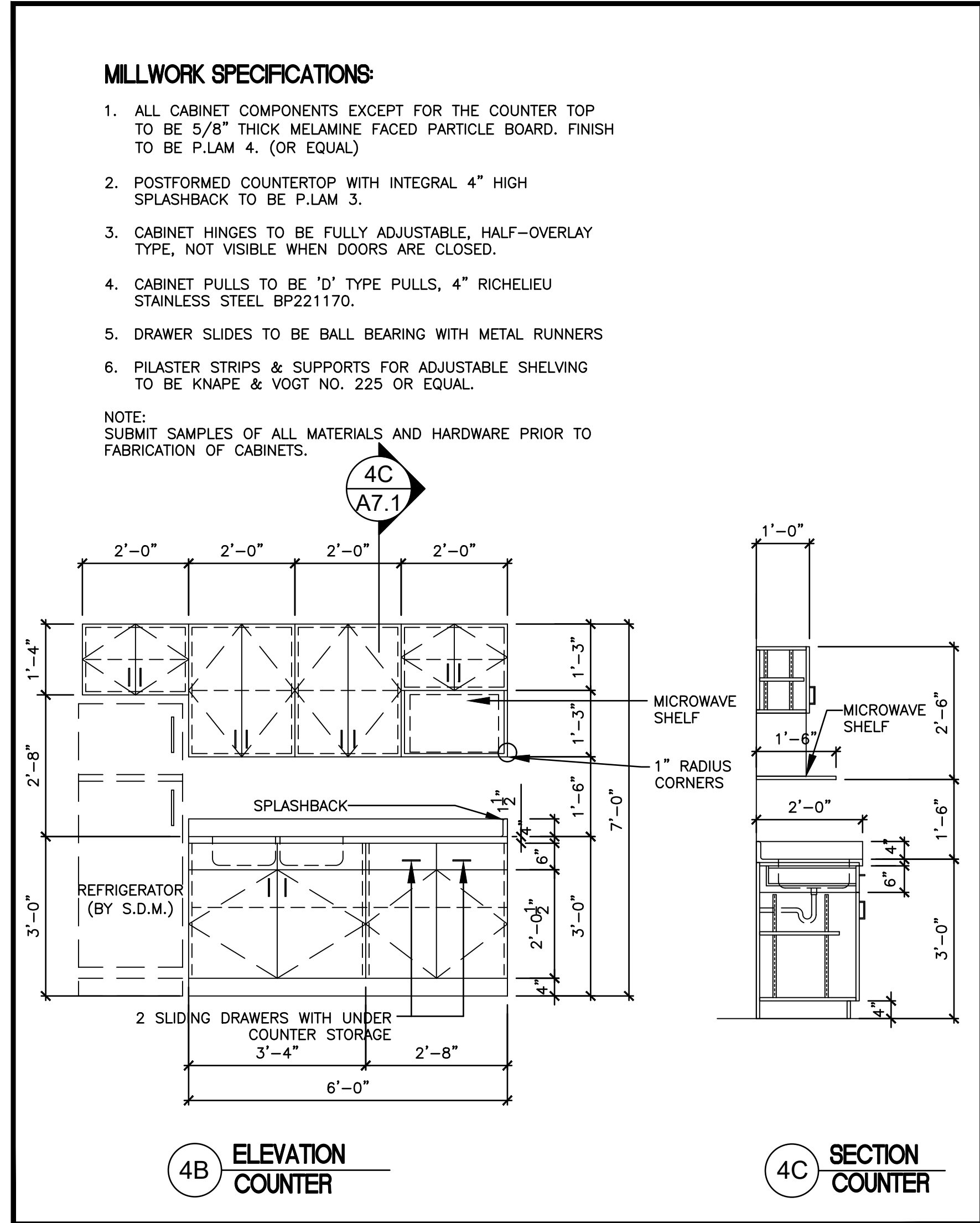
9 RESERVED



2 WASHROOM ELEVATIONS AND SECTIONS
3/8" = 1'-0"



3 JANITOR'S ROOM ELEVATIONS
1/2" = 1'-0"



4 TYPICAL KITCHEN MILLWORK ELEVATION AND SECTION
1/2" = 1'-0"



5 RESERVED

| EQUIPMENT SCHEDULE FOR STAFF ROOM, WASHROOM AND JANITOR'S ROOM | | | | |
|--|-----------------------------|--|---|--|
| CODE | ITEM | DESCRIPTION | SUPPLIER/ MFG AND MODEL NO. | NOTES |
| S1 | WATER CLOSET (BARRIER FREE) | FLOOR MOUNTED COMMERCIAL FLUSHOMETER, ELONGATED FRONT BOWL, LOW CONSUMPTION, WHITE FINISH. HEIGHT TO CONFORM WITH CSA AND ONTARIO BUILDING CODE REQUIREMENTS. | REFER TO MECHANICAL DRAWINGS FOR SPECIFICATION AND ADDITIONAL INFORMATION | REFER TO MECHANICAL DRAWINGS FOR SPECIFICATION AND ADDITIONAL INFORMATION |
| S1A | WATER CLOSET (REGULAR) | FLOOR MOUNTED COMMERCIAL FLUSHOMETER, ELONGATED FRONT BOWL, LOW CONSUMPTION, WHITE FINISH | REFER TO MECHANICAL DRAWINGS FOR SPECIFICATION AND ADDITIONAL INFORMATION | REFER TO MECHANICAL DRAWINGS FOR SPECIFICATION AND ADDITIONAL INFORMATION |
| S2 | LAVATORY | VITREOUS CHINA, WALL-HUNG, 4" CENTRES WHITE FINISH CARRIER | REFER TO MECHANICAL DRAWINGS FOR SPECIFICATION AND ADDITIONAL INFORMATION | REFER TO MECHANICAL DRAWINGS FOR SPECIFICATION AND ADDITIONAL INFORMATION |
| S3 | SOAP DISPENSER | | | SUPPLY AND INSTALL BY SDM THRU SMISH - VENDOR NUMBER 92144 |
| S4 | MIRROR | 24" X 30" ADJUSTABLE TILT SURFACE MOUNTED POLISHED STAINLESS STEEL FRAME | FROST PRODUCTS CODE NO. 941-2430AT FROST PRODUCTS CODE NO. 941-11 FOR UNIVERSAL WASHROOM | HEIGHT TO MEET BARRIER FREE REQUIREMENTS. SUPPLY AND INSTALL BY G.C. |
| S5 | TOILET PAPER HOLDER | DOUBLE ROLL - SCOTT SURFACE MOUNTED | | HEIGHT TO MEET BARRIER FREE REQUIREMENTS. SUPPLY AND INSTALL BY SDM THRU SMISH - VENDOR NUMBER 080550 |
| S6 | HAND DRYER WITH WALL GUARD | WALL-MOUNTED ELECTRIC HAND DRYER C/W WALL MOUNTED GUARD BONDED TO WALL DIRECTLY BELOW | THINAIR HAND DRYER - PRODUCT #TASB EXCEL HAND DRYER WALL GUARD - PRODUCT #XL-895 | HEIGHT TO MEET BARRIER FREE REQUIREMENTS. SUPPLY AND INSTALL BY G.C. REFER TO ELECTRICAL DRAWINGS FOR ADDITIONAL INFORMATION |
| S7 | WASTE RECEPTACLE | RECESSED WASTE RECEPTACLE | BOBRICK B-43644 | HEIGHT TO MEET BARRIER FREE REQUIREMENTS. SUPPLY AND INSTALL BY G.C. |
| S8 | GRAB BAR | 24" X 1-1/4" DIA. STAINLESS STEEL, PEENED FINISH WITH SNAP CONCEALED FLANGE (INSTALLED HORIZONTALLY) | FROST PRODUCTS CODE 1001SP 24" | SUPPLY AND INSTALL BY G.C. SIZE, LENGTH & LOCATION TO CONFORM WITH CSA & LOCAL BUILDING CODE REQUIREMENTS |
| S9 | GRAB BAR (L SHAPE) | 30" X 30" X 1-1/4" DIA. STAINLESS STEEL, PEENED FINISH WITH SNAP CONCEALED FLANGE (INSTALLED HORIZONTALLY) | FROST PRODUCT CODE 1003SP 30"x30" | SUPPLY AND INSTALL BY G.C. SIZE, LENGTH & LOCATION TO CONFORM WITH CSA & LOCAL BUILDING CODE REQUIREMENTS |
| S10 | COAT HOOKS | SINGLE TYPE, STAINLESS STEEL FINISH | FROST PRODUCTS CODE NO. 1139S | SUPPLY AND INSTALL BY G.C. PROVIDE HOOKS AS INDICATED IN WASHROOMS, CASH COUNTING ROOM, FSM OFFICE AND WHERE DIRECTED BY SDM |
| S11 | FEMININE NAPKIN DISPOSAL | SURFACE MOUNTED | | INSTALL IN ALL WASHROOMS - VENDOR NUMBER CITRON. THIS IS A SCHEDULED SERVICE. CONTACT LISA MILLER EMAIL: LMILLER@CITRONHYGIENE.COM |
| S12 | SERVICE SINK | 24" X 24" MOLDED STONE OR TERRAZZO FLOOR MOUNTED SERVICE BASIN | REFER TO MECHANICAL DRAWINGS FOR SPECIFICATION AND ADDITIONAL INFORMATION | REFER TO MECHANICAL DRAWINGS FOR SPECIFICATION AND ADDITIONAL INFORMATION |
| S13 | MOP AND BROOM HOLDER | BROOM/ MOP RACK 3 HOLDERS 26" LONG STAINLESS STEEL | FROST PRODUCTS CODE NO. 1113 | |
| S14 | STAFF ROOM SINK | DOUBLE BOWL STAINLESS STEEL SINK | REFER TO MECHANICAL DRAWINGS FOR SPECIFICATION AND ADDITIONAL INFORMATION | REFER TO MECHANICAL DRAWINGS FOR SPECIFICATION AND ADDITIONAL INFORMATION |
| S15 | GRAB BAR (FOLD DOWN) | 30" X 1-1/4" DIA. STAINLESS STEEL, PEENED FINISH WITH SNAP CONCEALED FLANGE | GALLERY SPECIALTY HARDWARE LTD. SPEC: C42 FINISH 32D | SUPPLY AND INSTALL BY G.C. SIZE, LENGTH & LOCATION TO CONFORM WITH CSA & LOCAL BUILDING CODE REQUIREMENTS. |
| S16 | EMERGENCY CALL SYSTEM | AUDIBLE AND VISUAL SIGNAL DEVICE LOCATED INSIDE AND OUTSIDE OF THE WASHROOM THAT ARE ACTIVATED BY A CONTROL DEVICE INSIDE THE WASHROOM AS PER OBC REQUIREMENTS | BESAM ASSA ABLOY OBC BPWASH-1 SYSTEM KIT | REFER TO ELECTRICAL DRAWINGS FOR SPECIFICATIONS |

10 WASHROOM EQUIPMENT SCHEDULE
N.T.S.

THIS DRAWING, AS AN INSTRUMENT OF SERVICE, IS PROVIDED BY AND IS THE PROPERTY OF DANIEL L. CUSIMANO, ARCHITECT.
THE CONTRACTOR MUST VERIFY AND ACCEPT RESPONSIBILITY FOR ALL DIMENSIONS AND CONDITIONS ON SITE AND MUST NOTIFY DANIEL L. CUSIMANO, ARCHITECT, OF ANY VARIATIONS FROM THE SUPPLIED INFORMATION.
THIS DRAWING IS NOT TO BE SCALED.
THE ARCHITECT IS NOT RESPONSIBLE FOR THE ACCURACY OF SURVEY, STRUCTURAL, MECHANICAL, ELECTRICAL, ETC. INFORMATION SHOWN ON THIS DRAWING. REFER TO THE APPROPRIATE CONSULTANT'S DRAWINGS BEFORE PROCEEDING WITH THE WORK.
CONSTRUCTION MUST CONFORM TO ALL APPLICABLE CODES AND REQUIREMENTS OF AUTHORITIES HAVING JURISDICTION.
THE CONTRACTOR WORKING FROM DRAWINGS NOT SPECIFICALLY MARKED "FOR CONSTRUCTION" MUST ASSUME FULL RESPONSIBILITY AND BEAR COSTS FOR ANY CORRECTIONS OR DAMAGES RESULTING FROM HIS WORK.
DRAWINGS/SPECIFICATIONS "ISSUED FOR CONSTRUCTION" ARE TO THE BEST OF OUR KNOWLEDGE AN ACCURATE REPRESENTATION OF DOCUMENTED REVISIONS. IN THE CASE OF ANY DISCREPANCY, OMISSION OR CONFLICT BETWEEN THE "ISSUED FOR CONSTRUCTION" DOCUMENTS AND THE CONTRACT DOCUMENTS, THE CONTRACTOR IS TO PROMPTLY NOTIFY THE CLIENT, ARCHITECT AND ENGINEERS.

PRINT DATE:
2025-04-28

| No. | DESCRIPTION | DATE |
|-----------|-------------|------|
| REVISIONS | | |

| | | |
|---|----------------------------------|------------|
| 2 | ISSUED FOR CONSTRUCTION | 2025-04-28 |
| 4 | KEY PLAN AND INTERIOR ELEVATIONS | 2025-04-21 |
| 3 | ISSUED FOR ADDENDUM #2 | 2025-03-14 |
| 2 | ISSUED FOR TENDER | 2025-02-27 |
| 1 | ISSUED FOR BUILDING PERMIT | 2024-11-06 |

| No. | DESCRIPTION | DATE |
|------------|-------------|------|
| ISSUED FOR | | |



INTERIOR ALTERATIONS TO EXISTING RETAIL BUILDING

SHOPPERS DRUG MART 9888
6520 MAJOR MACKENZIE DRIVE WEST, BUILDING A2
VAUGHAN, ONTARIO

DATE: OCTOBER 2024
DRAWN BY: MP
CHECKED BY: SM/DLC

DRAWING TITLE:
ENLARGED PLANS AND MISCELLANEOUS DETAILS

SCALE: AS NOTED
PROJECT: A7.1
2024-24