

REVISED
SHOP DRAWING PACKAGE

Prepared for
CONSULT MECHANICAL

SCARBOROUGH WARMING CENTRE
PH 2 885 SCARBOROUGH GOLF CLUB

AUG 26, 2024

American Standard

Style That Works Better

 BARRIER FREE

CADET® PRO™ RIGHT HEIGHT® ELONGATED TOILET

VITREOUS CHINA

CADET® PRO™ RIGHT HEIGHT® ELONGATED TOILET

❑ 215AA 104

- Features the **Cadet® Flushing System**
- Vitreous china
- High Efficiency Toilet (HET), ultra-low consumption (4.8 Lpf/1.07 gpf), utilizes 20% less water
- Meets EPA WaterSense® criteria (pending)
- Trade exclusive tank
- PowerWash® rim scrubs bowl with each flush
- Robust metal trip lever & metal shank fill valve
- Includes EZ-Install Tools w/colour match bowl caps
- EverClean® surface included
- Oversized 3" flush valve
- Fully-glazed 2-1/8" trapway
- 16-1/2" (419mm) rim height for accessible applications
- 12" (305mm) rough-in
- Generous 9" x 8" (229 x 203mm) water surface area
- Chrome finish trip lever is supplied
- 1,000g MaP Score** at 4.8 Lpf/1.07 gpf
- 5 year warranty



- ❑ 215AA 154 Same as above except with lined tank

Separate Component Parts:

- ✓ 3517A 101 Right Height® Elongated Bowl
- ❑ 4188A 104 Tank
- ✓ 4188A 154 Lined Tank

Nominal Dimensions:

767 x 441 x 771mm (30-1/8" x 17-3/8" x 30-3/8")

Fixture only, seat and supply sold separately

Alternative Tank Configurations Available:

- ❑ 4188A 164 Tank complete with tank cover locking device
- ❑ 4188A 174 Tank complete with Aquaguard Liner and tank cover locking device
- ❑ 4188A 105 Tank complete with trip lever located on right side
- ❑ 4188A 165 Tank complete with tank cover locking device and trip lever located on right side

Compliance Certifications -

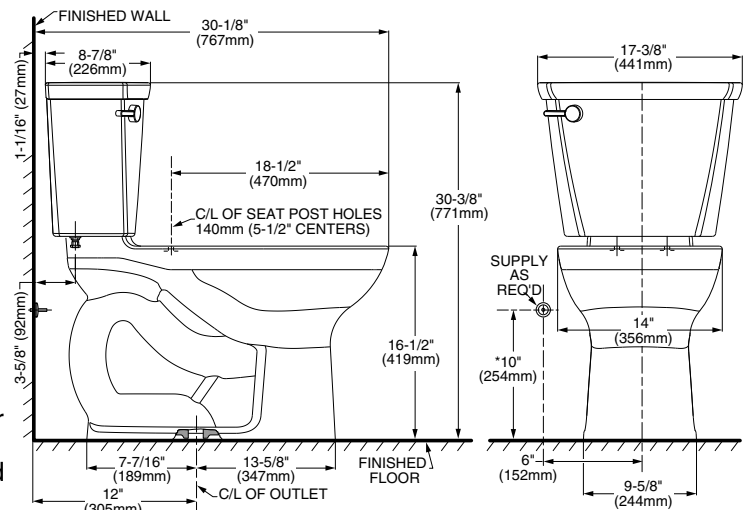
Meets or Exceeds the Following Specifications:

- ASME A112.19.2-2008/CSA B45.1-08 for Vitreous China Fixtures
- US EPA WaterSense® Specification for HETs

** Maximum Performance (MaP) testing performed by IAPMO R&T Lab. MaP Report conducted by Veritec Consulting, Inc. and Koeller and Company.

To Be Specified:

- ✓ Colour: ✓ White ❑ Bone ❑ Linen
- ❑ Seat: #5321 110 EverClean® Elongated Seat with Slow Close Snap-Off Hinges
- ❑ Supply with stop:



NOTES:

THIS TOILET IS DESIGNED TO ROUGH-IN AT A MINIMUM DIMENSION OF 305MM (12") FROM FINISHED WALL TO C/L OF OUTLET. SUPPLY NOT INCLUDED WITH FIXTURE AND MUST BE ORDERED SEPARATELY. * DIMENSION SHOWN FOR LOCATION OF SUPPLY IS SUGGESTED.

IMPORTANT: Dimensions of fixtures are nominal and may vary within the range of tolerances established by ANSI Standard A112.19.2. These measurements are subject to change or cancellation. No responsibility is assumed for use of superseded or voided pages.



MEETS THE AMERICANS WITH DISABILITIES ACT GUIDELINES AND ANSI A117.1 REQUIREMENTS FOR ACCESSIBLE AND USABLE BUILDING FACILITIES-CHECK LOCAL CODES.



Cadet®



*American
Standard*

CADET® PRO™ RIGHT HEIGHT® ELONGATED TOILET

 BARRIER FREE

VITREOUS CHINA

CADET® PRO™ RIGHT HEIGHT® ELONGATED TOILET

❑ 215AA.104

- Features the **Cadet® Flushing System**
- Vitreous china
- High Efficiency Toilet (HET), ultra-low consumption (4.8 Lpf/1.28 gpf), utilizes 20% less water
- Meets EPA WaterSense® criteria
- Trade exclusive tank
- PowerWash® rim scrubs bowl with each flush
- Robust metal trip lever & metal shank fill valve
- Includes EZ-Install Tools w/color match bowl caps
- EverClean® surface inhibits the growth of stain- and odor-causing bacteria, mold, and mildew on the surface
- 3" flush valve
- Fully-glazed 2-1/8" trapway
- 16-1/2" rim height for accessible applications
- 12" (305mm) rough-in
- Generous 9" x 8" water surface area
- Chrome finish trip lever is supplied
- 1,000g MaP Score** at 1.28 gpf
- 5 year warranty

❑ 215AA.105 Same as above except with trip lever on right side

❑ 3517A.101 Right Height® Elongated Bowl

❑ 4188A.104 Tank

Nominal Dimensions:

767 x 441 x 771mm (30-1/8" x 17-3/8" x 30-3/8")

Fixture only, seat and supply sold separately

Alternative Tank Configurations Available:

✓ 4188A.154 Tank complete with Aquaguard Liner

❑ 4188A.155 Tank complete with Aquaguard Liner and trip lever located on right side

❑ 4188A.164 Tank complete with tank cover locking device

❑ 4188A.174 Tank complete with Aquaguard Liner and tank cover locking device

❑ 4188A.105 Tank complete with trip lever located on right side

❑ 4188A.165 Tank complete with tank cover locking device and trip lever located on right side

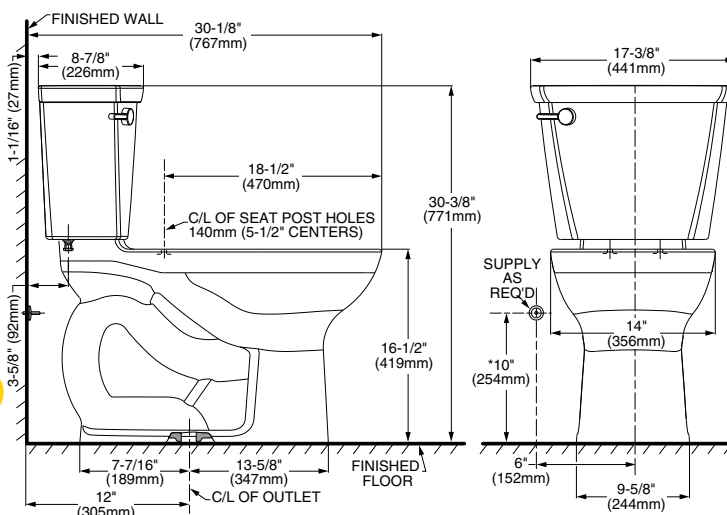
Compliance Certifications -

Meets or Exceeds the Following Specifications:

- ASME A112.19.2-2008/CSA B45.1-08 for Vitreous China Fixtures
- US EPA WaterSense® Specification for HETs

To Be Specified:

- ❑ Color: ☒ White ☐ Bone ☐ Linen ☐ Black
- ❑ Seat: #5321.110 EverClean® Elongated Seat with Slow Close Snap-Off Hinges
- ❑ Supply with stop:



NOTES:

THIS TOILET IS DESIGNED TO ROUGH-IN AT A MINIMUM DIMENSION OF 305MM (12") FROM FINISHED WALL TO C/L OF OUTLET. SUPPLY NOT INCLUDED WITH FIXTURE AND MUST BE ORDERED SEPARATELY. * DIMENSION SHOWN FOR LOCATION OF SUPPLY IS SUGGESTED.

IMPORTANT: Dimensions of fixtures are nominal and may vary within the range of tolerances established by ANSI Standard A112.19.2. These measurements are subject to change or cancellation. No responsibility is assumed for use of superseded or voided pages.

** Maximum Performance (MaP) testing performed by IAPMO R&T Lab. MaP Report conducted by Gauley Associates Ltd. and Koeller and Company.



MEETS THE AMERICANS WITH DISABILITIES ACT GUIDELINES AND ICC ANSI A117.1 REQUIREMENTS FOR ACCESSIBLE AND USABLE BUILDING FACILITIES-CHECK LOCAL CODES.



Cadet® PRO

© 2018 AS America Inc.

PART OF **LIXIL**

K2-2

Rev. 6/13



Solid Plastic Seats Elongated

Institutional • Commercial • Hotel/Motel • Residential

800 SERIES



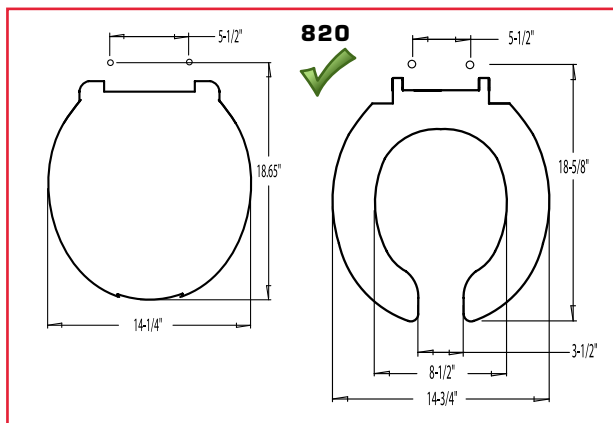
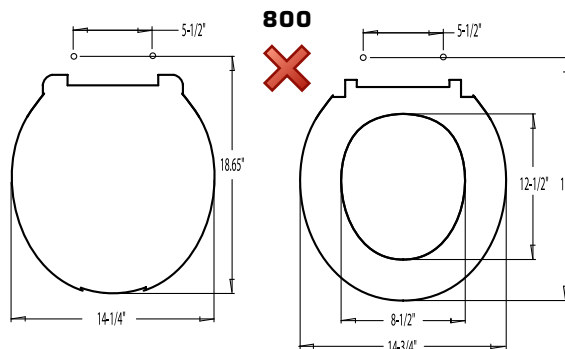
Available in Antimicrobial.
Available in Fire-Retardant.



820 SERIES



Available in Antimicrobial.
Available in Fire-Retardant.



DETAILS

800TM

Luxury closed front with cover for elongated bowl. Top-mount hinge. For residential and light-duty commercial use.

800STS

Extra heavy-duty, closed front with cover for elongated bowl. Stainless steel hinge.

800STSS

Extra heavy-duty, closed front with cover for elongated bowl. Stainless steel self-sustaining ring.

820TM

Light-duty commercial, open front with cover for elongated bowl. Top-mount hinge. For light-duty commercial use.

820STS

Extra heavy-duty, open front with cover for elongated bowl. Stainless steel hinge.

820STSS

Extra heavy-duty, open front with cover for elongated bowl. Self-sustaining, stainless steel hinge.

Standard Features:

- Impact-absorbing hinges
- Extended back with concealed hinge
- Integrally-molded, permanent and sanitary color-keyed bumpers
- Corrosion-free hardware
- Withstands cleansers, strong chemicals

Color	Code #	800 TM	800 STS	800 STSS	820 TM	820 STS	820 STSS
White	001	<input type="checkbox"/>	<input checked="" type="checkbox"/>	<input checked="" type="checkbox"/>	<input type="checkbox"/>	<input checked="" type="checkbox"/>	<input checked="" type="checkbox"/>
Cotton/							
Crane White	301	<input type="checkbox"/>	<input type="checkbox"/>			<input checked="" type="checkbox"/>	
Linen/							
Biscuit	416	<input type="checkbox"/>	<input type="checkbox"/>			<input type="checkbox"/>	
Black	407	<input type="checkbox"/>	<input checked="" type="checkbox"/>			<input checked="" type="checkbox"/>	
Bone/							
Almond	106-A	<input type="checkbox"/>	<input checked="" type="checkbox"/>	<input type="checkbox"/>	<input type="checkbox"/>	<input checked="" type="checkbox"/>	

Canada ● U.S. ☐



TOWNSEND® 48" x 36" SHOWER BASE SOLID SURFACE

TOWNSEND® 48" x 36" SOLID SURFACE SHOWER BASE

❑ **4836SMCOL** Low Threshold Center Drain

Product Features:

- Durable 100% solid, non-porous material
- Smooth matte surface
- Integral 3-sided 1" tiling / water retention flange for easy installation
- Low 2" threshold height
- Repairable and renewable surface
- Does not support bacteria and fungi growth
- Self-extinguishing
- UV resistant
- Resistant to stains and impact
- Easy maintenance and cleaning
- Drain not included



SEE REVERSE SIDE FOR ROUGHING-IN DIMENSIONS

Nominal Dimensions:

48" x 36" x 2"
(1219 x 914 x 51mm)

Shower Base Includes:

- Removable solid surface trench drain cover

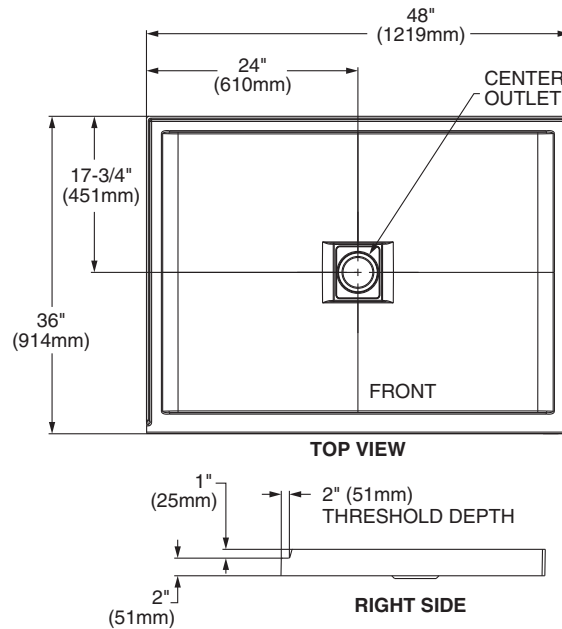
Compliance Certifications -

Meets or Exceeds the Following Specifications:

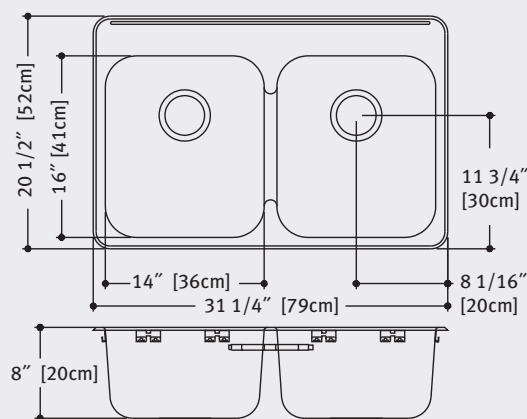
- CSA B45.5 / IAPMO Z124
- cUPC
- ASTM F462 (Pass w/COF=0.44)
- ASTM C1028
 - COF Dry = 0.66
 - COF Wet = 0.56

Flame & Smoke

- ASTM E84
 - Flame Spread Index = 0
 - Smoke Index = 20
- CAN/ULC S102.2
 - Flame Spread Rating = 0
 - Smoke Developed Classification = 15

4836SMCOL
Low Threshold Center Drain

GENERAL SPECIFICATIONS FOR 4836SM SHOWER BASE

INSTALLED SIZE	1219mm x 915mm (48 x 36 In.)
WEIGHT	48.1 Kg. (106 Lbs.)
SHOWER WELL AT SUMP	1037mm x 799mm (40-13/16 x 31-3/8 In.)
SHOWER WELL AT RIM	1133mm x 817mm (44-5/8 x 32-3/16 In.)
FLOOR LOADING (PROJECTED AREA)	43 Kgs/Sq. m. (9 Lbs./Sq. Ft.)



cUPC®

Specification:

Double compartment sink with faucet ledge. 20 gauge, type 302, 18-8 stainless steel. Self rimming. Exposed surfaces are satin finished. Spillway® between bowls. Undercoated to reduce condensation and resonance. Complete with factory applied rim seal, Universal Installation System hardware, cutout template and 3 1/2" crumb cup waste assembly, location center back.

Compartment Size: 16" x 14" x 8" (41 cm x 36cm x 20cm)

Overall Size: 20 1/2" x 31 1/4" (52cm x 79cm)

Faucet hole drilling options:

- ☒ LBD6408-1/1 1 hole, 1 1/2" diameter
- ☐ LBD6408-1/3 3 hole, 1 1/2" diameter, 4" centers, 8" centerset
- ☐ LBD6408-1/4 4 hole, as 3 hole above, plus 1 hole 4" to the right
- ☐ LBD6408-1 Custom (non-returnable)

***For custom please specify drilling requirements.**

Notes:

- Electronic specifications, reference www.kindred-sinkware.com

PROJECT INFORMATION

Project Name: _____

Item Reference: _____

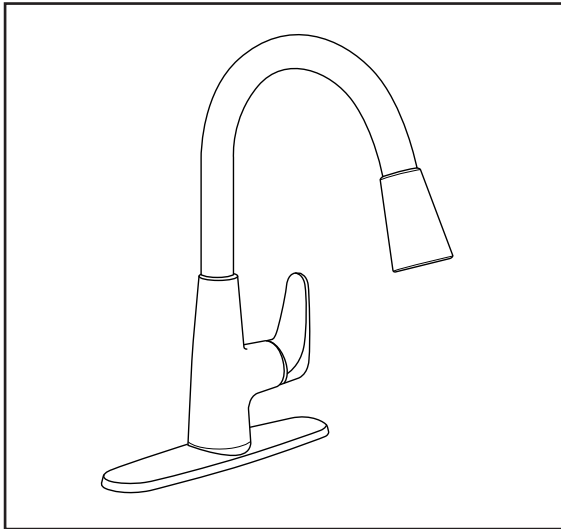
Location: _____

Quote #: _____

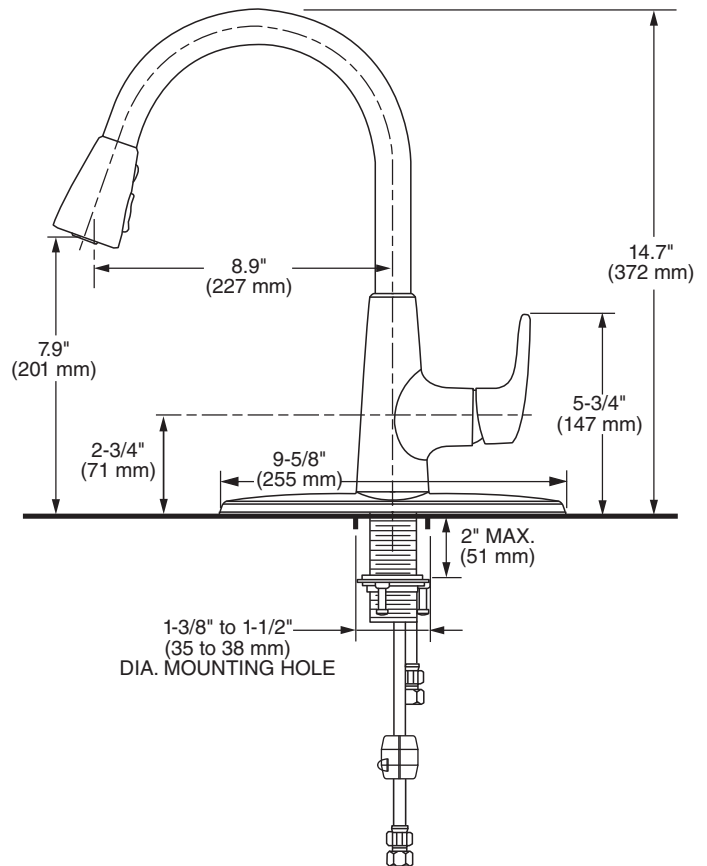
Faucet Model #: _____

Drillings Required: _____

Notes: _____



MODEL NUMBER:
✓ **7074.300 Pull-Down Faucet**



GENERAL DESCRIPTION:

Metal body and handle with brass swivel spout. Pull-down spray with adjustable spray pattern and pause feature. Nylon braided pull out hose complete with two integral check valves. Washerless 35 mm ceramic disc valve cartridge. 24" Flexible, color coded braided stainless steel supply hoses with 3/8" compression connections. Mounting shank with brass fixation ring. 1.5 gpm/5.7 L/min. maximum flow rate. Fitting can be mounted with or without metal escutcheon plate.

PRODUCT FEATURES:

Ceramic Disc Valve Cartridge: Assures a lifetime of smooth handle operation and drip-free performance.

Metal Construction: Quality materials for durability & long life.

Memory Position Valving: Allows user to turn valve on and off at preferred temperature setting without readjusting handle position each time.

Lead Free: Faucet contains $\leq 0.25\%$ total lead content by weighted average.

Pull-down Spray: Adjustable spray pattern-stream to spray and pause feature.

Integral Check Valves: Prevents back flow.

Choice of Finishes: Choice of Polished Chrome or Stainless Steel (PVD).

SUGGESTED SPECIFICATION

Single control kitchen faucet shall feature a metal body with pull-down spray. Shall also feature washerless ceramic disc valve cartridge, flexible stainless steel supply hoses and two integral check valves. Fitting shall be American Standard Model # 7074.300.____.



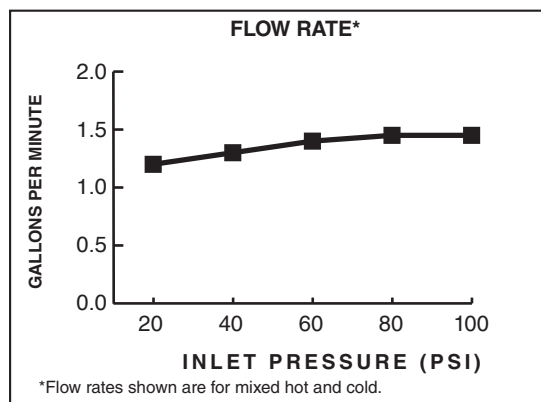
COLONY® PRO

SINGLE CONTROL KITCHEN FAUCET WITH PULL-DOWN SPRAY

CODES AND STANDARDS

These products meet or exceed the following codes and standards:

ANSI A117.1
ASME A112.18.1
CSA B125.1
NSF 61/Section 9
NSF 372

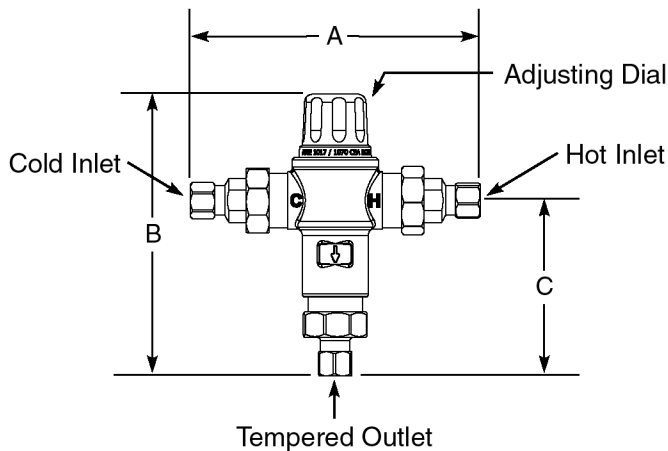


1.5 gpm/5.7 L/min. FLOW RATE

Product Number	Description	Finish Options	
		Polished Chrome	PVD Stainless Steel
		002	075
7074.300	Pull-Down Kitchen Faucet	✓	



Meets the American Disabilities Act Guidelines and **ANSI A117.1** Requirements for the physically challenged.



Thermostatic Mixing Valve for Point of Use and Master Controlled Fixtures

Model 570

Unit No. 86820

Inlets & Outlet are $\frac{3}{8}$ " Compression Fit

ASSE 1017 & 1070 Approved

Certified to
CSA B125.3

The mixing valve for point of use master controlled fixtures shall be a nickel plated thermostatic mixing valve. The mixing valve shall be $\frac{3}{8}$ " Compression Fit. The mixing valve shall have a spindle to adjust outlet temperature. The mixing valve shall have internal checks. The mixing valve shall be Lawler model 570.

Specifications

- Outlet temperature range: 95-115°F.
- Temperature, hot supply: 180°F max.
- Temperature, cold supply: 40-80°F.
- Temperature stability (nominal): $\pm 5^\circ\text{F}$.
- Temperature differential (between hot supply and outlet temperature): 10°F.
- Hydrostatic pressure: 125 psi max.
- Permitted supply pressure variation: $\pm 20\%$.
- Flow rate @ 45psi pressure loss: 7 gpm.
- Flow rate, minimum: .5 gpm.
- Flow rate, maximum: 8 gpm.

Benefits

- Protects against scalding and chilling.
- Offers choice of temperature settings from 95° through 115°F.
- Easy installation.
- Backed by Lawler's One Year Warranty.
- ASSE 1017 & 1070 approved.

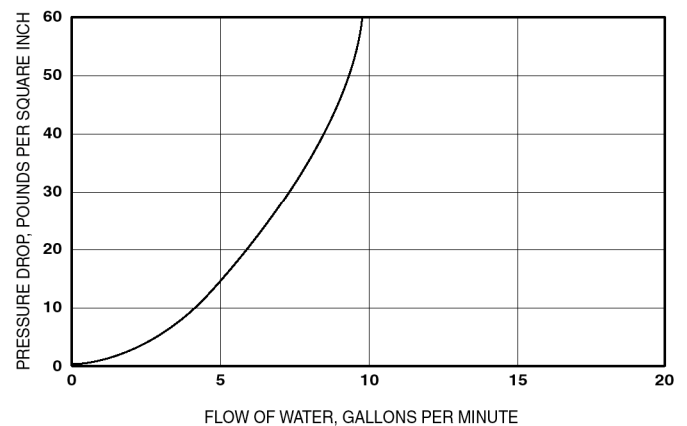
Engineer Approval ☐**MANUFACTURING CO., INC.**

5330 East 25th Street
Indianapolis, Indiana 46218
Phone (317) 261-1212
Fax (317) 261-1208

DIMENSIONS:

Valve Number	A	B	C
M 570	5.6"	5.4"	3.4"

FLOW CAPACITIES - MODEL 570



CAPACITIES - MODEL 570

Pressure Drop PSI	5	10	20	40
Valve Number	Capacity			
570-GPM	3	4	5	6.5
570-LPM	11	15	19	25

Temperature Adjustment

To adjust the mixed outlet temperature of the valve, remove the cap to gain access to the adjusting spindle. The spindle should be rotated-clockwise to reduce the temperature, counter-clockwise to increase the temperature until the desired set point is reached.

Note: For ASSE 1017 & 1070 applications.

Design and specification subject to change without notice.



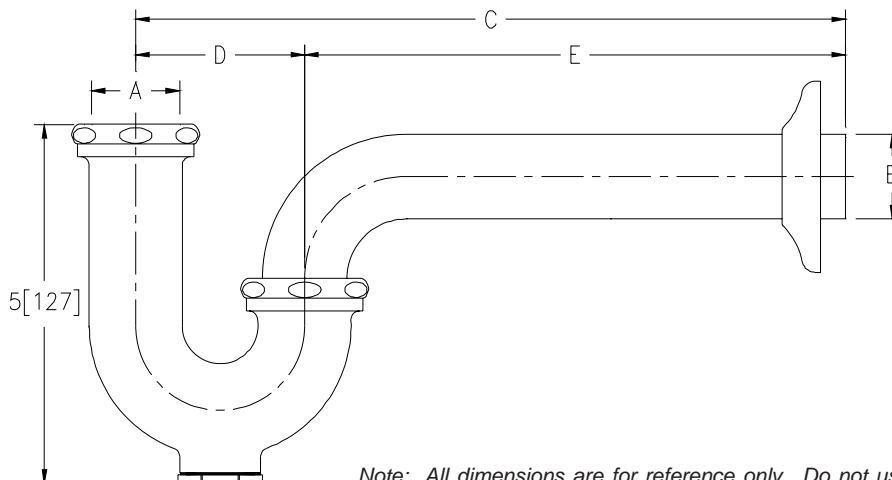
SEMI-CAST P-TRAPS WITH WALL BEND

Z8700-PC TO Z8708-PC

TAG



Engineering Specification: Zurn Z8700-PC to Z8708-PC. – Chrome-plated cast brass (copper alloy) body P-trap with cleanout, tubular brass wall bend as specified, die-cast nuts, and shallow escutcheon with compression inlet.



Note: All dimensions are for reference only. Do not use for pre-plumbing.

PRODUCT NUMBER	A INLET in[mm]	B OUTLET in[mm]	GAUGE	DIMENSIONS			MASTER CARTON	WEIGHT CARTON [lbs]
				C in[mm]	D in[mm]	E in[mm]		
Z8700-PC	1 1/4[32]	1 1/4[32]	17	10[254]	2 1/2[64]	7 1/2[191]	12	24
Z8700-8-PC	1 1/4[32]	1 1/4[32]	17	11[279]	2 1/2[64]	8 1/2[216]	12	24
Z8700-15-PC	1 1/4[32]	1 1/4[32]	17	15[381]	2 1/2[64]	12 1/2[318]	18	40
Z8701-PC	1 1/4[32]	1 1/2[38]	17	10 1/2[267]	3[76]	7 1/2[191]	12	24
Z8701-9-PC	1 1/4[32]	1 1/2[38]	17	12[305]	3[76]	9[229]	12	24
Z8701-15-PC	1 1/4[32]	1 1/2[38]	17	15[381]	3[76]	12[305]	18	42
Z8702-PC*	1 1/2[38]	1 1/2[38]	17	10 1/2[267]	3[76]	7 1/2[191]	12	24
Z8702-9-PC*	1 1/2[38]	1 1/2[38]	17	12[305]	3[76]	9[229]	12	24
Z8702-15-PC*	1 1/2[38]	1 1/2[38]	17	15[381]	3[76]	12[305]	18	42
Z8703B-PC**	1 1/2[38]	2[51]	17	12 1/2[318]	3 1/2[89]	9[229]	6	18
Z8704B-PC**	2[51]	2[51]	17	12 1/2[318]	3 1/2[89]	9[229]	6	18
Z8706-PC	1 1/4[32]	1 1/4[32]	20	10[254]	2 1/2[64]	7 1/2[191]	12	24
Z8707-PC	1 1/4[32]	1 1/2[38]	20	10 1/2[267]	3[76]	7 1/2[191]	12	24
Z8708-PC*	1 1/2[38]	1 1/2[38]	20	10 1/2[267]	3[76]	7 1/2[191]	12	24

OPTIONAL ACCESSORIES

Suffix	Description
-B	Brass Nuts
-BX	Box Escutcheon
-CE	Cast Brass Escutcheon with Setscrew
-D	Deep Escutcheon (Note = not available for Z8703B-PC and Z8704B-PC)
-J	Metal to Metal Ground Joint Connection
-WC	Waste Connections - Compression
-15	15[381] C Dim. 1 1/4[32] and 1 1/2[38] Only
-18	18[457] C Dim. 1 1/4[32] and 1 1/2[38] Only

* COMES WITH OPTIONAL 1-1/2" x 1-1/4" REDUCTION POLY-WASHER FOR INLET

** SHIPPED WITH BRASS NUTS UNLESS OTHERWISE SPECIFIED

ZURN INDUSTRIES, LLC ♦ COMMERCIAL BRASS OPERATION ♦ 2640 SOUTH WORK STREET ♦ FALCONER NY 14733

Phone: 1-800-997-3876 ♦ Fax: 1-919-775-3541 ♦ www.zurn.com

In Canada: ZURN INDUSTRIES LIMITED ♦ 3544 Nashua Drive ♦ Mississauga, Ontario L4V1L2 ♦ Phone: 905/405-8272 Fax: 905/405-1292



ZS880 ← SH-2 LINEAR SHOWER DRAIN

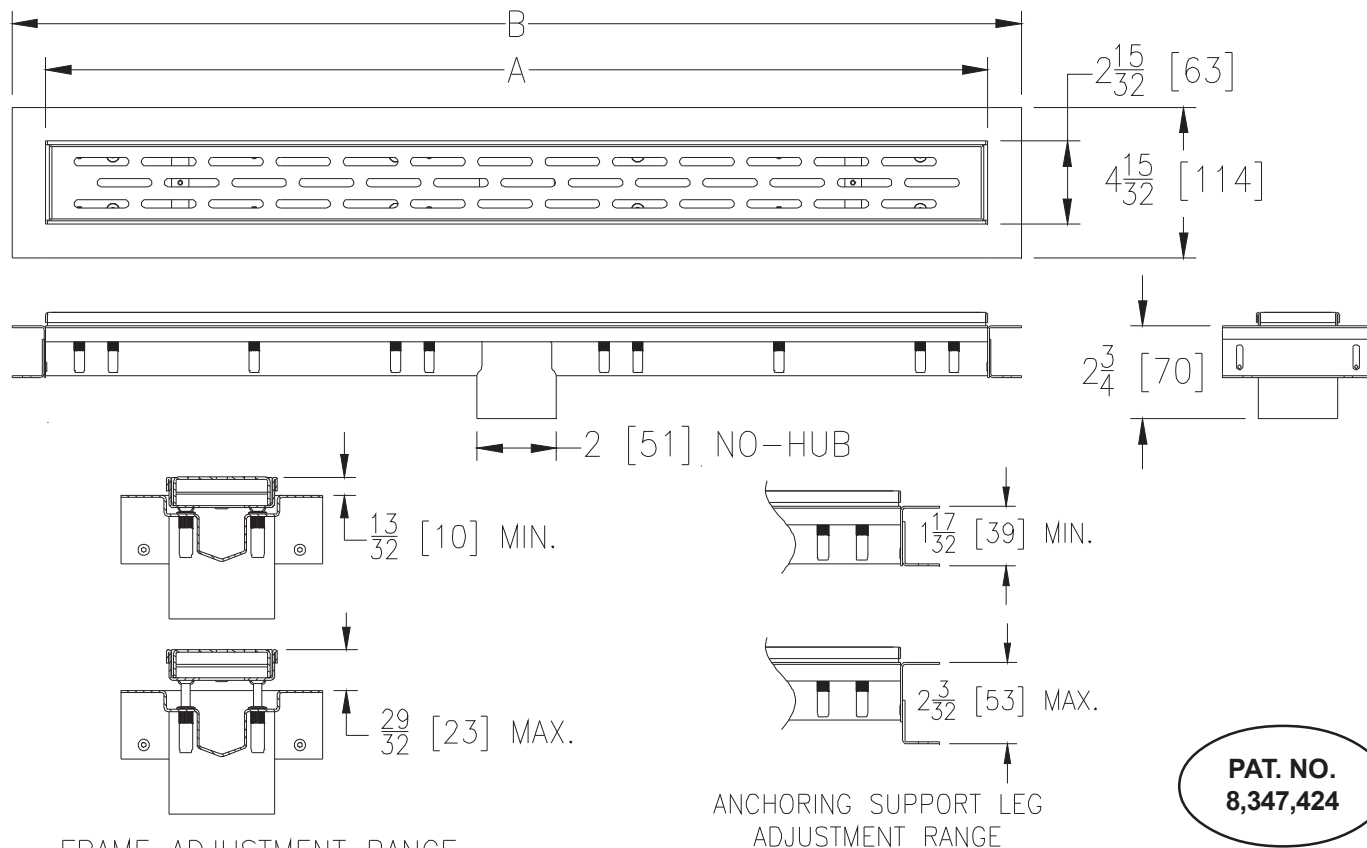
STAINLESS STEEL
LINEAR SHOWER DRAIN

Drainage slope achievable as
per architectural details

SPECIFICATION SHEET

TAG _____

Dimensional data (inches and [mm]) are subject to manufacturing tolerances and change without notice.



PAT. NO.
8,347,424

FRAME ADJUSTMENT RANGE

ANCHORING SUPPORT LEG
ADJUSTMENT RANGE

Dimensions In Inches [mm]			Approx. Wt. Lbs. [kg]	Grate Open Area Sq. In. [cm ²]
Product Designation	A	B		
-12	12 [305]	14 [356]	2.9 [1.3]	6 [38]
-28	28 [711]	30 [762]	5.4 [2.5]	15 [97]
-32	32 [813]	34 [864]	5.9 [2.7]	18 [116]
-36	36 [914]	38 [965]	6.4 [2.9]	20 [129]
-40	40 [1016]	42 [1069]	7.2 [3.3]	22 [142]
-48	48 [1219]	50 [1270]	8.4 [3.8]	27 [174]
-60	60 [1524]	62 [1575]	10.3 [4.7]	34 [219]
-72	72 [1829]	74 [1880]	12.4 [5.6]	41 [265]

ENGINEERING SPECIFICATION: ZS880

All Type 304 (CF8) Fabricated Stainless Steel Linear Shower Drain. Complete with vertically adjustable anchoring support legs, anti-ponding V-shaped channel with 2" [51 mm] No-Hub center outlet, adjustable secured leveling frame with built-in tile edge, integral membrane flange for glue on waterproofing membrane, and secured, light-duty, slotted heel-proof grate. Drain is designed for installation in a minimum 2" [51 mm] concrete pour and can be adjusted to accommodate 1/4" [6 mm] and 3/8" [10 mm] finished tile thicknesses.

End Bottom Outlet will be provided and recommended. Other options also available if suggested otherwise.

OPTIONS (Check/specify appropriate options)

PREFIXES

- ___ ZS All Type 304 (CF8) Stainless Steel*
___ ZR All Type 304 (CF8) Stainless Steel w/ Oil-Rubbed Bronze Finish

GRATE OPTIONS

- ___ -BW Basket Weave Grate
___ -DB Decorative Block Grate
___ -SG Serenity Grate
___ -TG Tile In-Lay Grate
___ -WG Wave Grate

SUFFIXES

- ___ -2 Two Bottom Outlets (2 [51] No-Hub, Not Available on Size -12)
___ -2IP 2 [51] Female IP Threaded Outlet
___ -3 Three Bottom Outlets (2 [51] No-Hub, Not Available on Size -12)
___ -EO End Bottom Outlet (2 [51] No-Hub, Not Available on Size -12)
___ -FS Outlet Filter Screen
___ -KC Clamp Collar on Anchor Flange
___ -LB Lower Body With Membrane Clamp Collar
___ -SO Side Outlet (2 [51] No-Hub), Not available with -LB Option

* Regularly furnished unless otherwise specified