

Date Received 10-Jul-2025

Date Returned 14-Jul-2025

Reviewed

Reviewed as Noted

Returned for Correction

Resubmit

This drawing has been reviewed by Serosima Architects Inc. for the general design Concept as defined solely by our architectural drawings and our architectural specifications.

This review shall not mean that Serosima approves the detail design inherent in the shop drawing, responsibility for which shall remain with the Contractor submitting same, and such review shall not relieve the Contractor of its responsibility for errors or omissions in this shop drawing or of its responsibility for meeting all requirements of the contract documents.

The Contractor is responsible for dimensions to be confirmed and correlated at the job site, for information that pertains to fabrication processes or techniques of construction and installation and for co-ordination of the work of all related sub-trades.

Serosima Architects Inc.

Signed: **Youssef Moussaoui**

REFER TO ENGINEER'S COMMENTS



BOLD ENGINEERING INC.

2778 DUFFERIN STREET, SUITE 104

TORONTO, ONTARIO M6B 3R7

REVIEWED

REVIEWED AS NOTED

REJECTED

REVISE AND RESUBMIT

This review is only for general conformance with the design concept of the project and general compliance with the information given in the Contract Documents. Corrections or comments made on the shop drawings during this review do not relieve Contractor from compliance with the requirements of the plans and specifications. Approval of a specific item shall not include approval of an assembly of which the item is a component. Contractor is responsible for: dimensions to be confirmed and correlated at the jobsite; information that pertains solely to the fabrication processes or to the means, methods, techniques, sequences and procedures of construction; coordination of the Work of all trade; and for performing all Work in a safe and satisfactory manner.

NAME: Justin Tam TITLE: Mechanical Engineer

DATE: 2025-07-14

SIGNATURE:

Notes:

- 1) Preferred option is Option 1: Jay R. Smith. Strainer top to be round to match the corridor drains. Other features to remain the same as shown in submittal.
- 2) Ensure actual sanitary drain line size matches existing drawings (100Ø). New drains to match on-site measurements.
- 3) Verify actual strainer size of existing corridor drains. New drains to match.



Project Title Sudbury Jail Flooring & Refresh
Drain Shop Drawings Submittal

Submittal # 25-036-1
Sent Date
Due Date
Date Received

Submitted By Nick Sabatino
Coordinator Nick Sabatino

Plan Sheet #
Spec Section

Sent To (CC)

External Approver

Submittal Items

Item #	Name	Sent	Received	Status
Drain Shop Drawings	Drain Shop Drawings For Approval			Submitted

Description: Shop Drawings for Drains for Approval

Attachments (Click to Open):

~~[\[FILE\] Submittal_25-010-001_Floor_drains_R.1_1752185630385.pdf](#)~~

Please do not send embedded files and keep as a simple PDF to be edited by all in a simple and visible way.

Last Edited: 07/10/2025 06:14 PM by Nick Sabatino



54 Audia Court, Unit 2
Concord, ON L4K 3N5
(905)-738-1400

Submittal 25-010-001

PROJECT NAME	PROJECT ADDRESS	DATE SUBMITTED
Sudbury Jail Flooring & Refresh 25-010	181 Elm Street Greater Sudbury, ON P3C 1T8	Jul 8, 2025

TO	FROM
Nick Sabatino	INZAMAN KHAN
COMPANY	COMPANY
PRIMARY CONSTRUCTION	Consult Mechanical Inc.
EMAIL	EMAIL
nick@primaryconstruction.ca	inzaman@consultmechanical.com
ADDRESS	ADDRESS
315 ATTWELL DRIVE, TORONTO, ONTARIO M9W 5C1	54 Audia Court, Unit 2 Concord, ON L4K 3N5

Title

Floor Drains FD-1

Description

Floor Drain :

Drains Option 1:

JAY R. SMITH 2005Y-B05SS-U-P050

Preferred option with round strainer to match corridor drains.

Primers Option 1:

1. JAY R. SMITH PRESSURE DROP ACTIVATED TRAP PRIMER
2. JAY R. SMITH ELECTRONIC TRAP PRIMER

Drains Option 2:

A. WATTS FD-100-C-A

~~B. WATTS FD-100-C-A~~

Primers Option 2:

- A. Z1022-XL SANI-GUARD AUTOMATIC TRAP PRIMER - The inlet and outlet on the Z1022 are either both female or male.
- B. P1-500 PRESSURE DROP ACTIVATED TRAP PRIMER
- C. DU-U TRAP PRIMER FRESH WATER DISTRIBUTION SYSTEM
- D. PT-4 ELECTRONIC TRAP PRIMER

Rev 1: Primers removed from the shops as they are not required.

Note: Engineers to confirm the size and options for the drains and primers.

Package Items

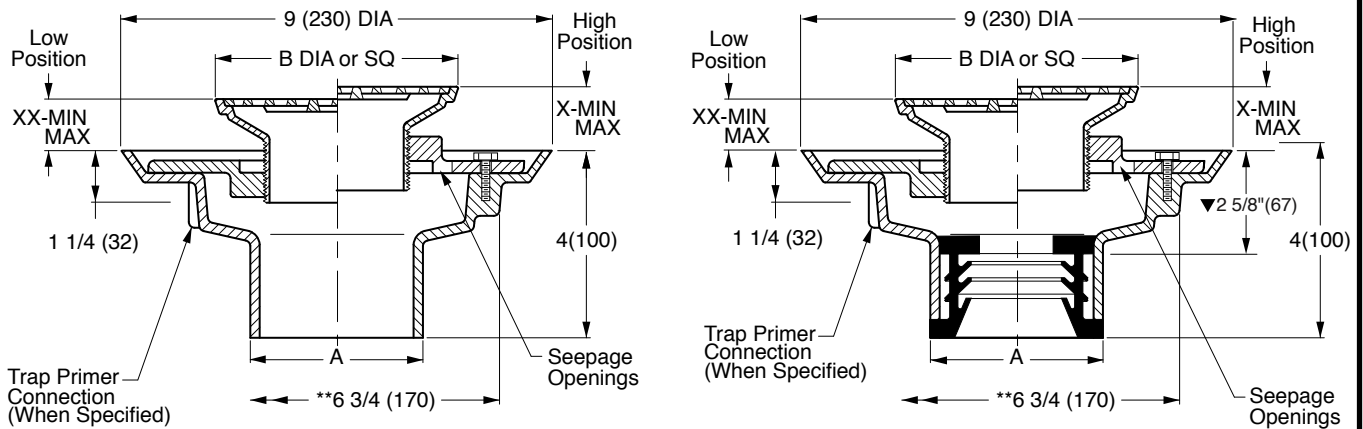
SPEC	SUBSECTION	ITEM	TYPE
------	------------	------	------

OPTION 1:

U		  	LOCATION
---	---	---	----------

FLOOR OR SHOWER DRAINS WITH ADJUSTABLE STRAINER HEADS

General service floor drain for use in showers, toilets, kitchens and other finished areas where foot traffic is expected.
 Load Rating: Light Duty having a Safe Live (Static) Load less than 2,000 lbs. (900 kg) per ASME A112.6.3 Floor Drain Standard.
 For the specific Safe Live Load rating of any grate, contact the Smith representative or factory direct.



A (Pipe Size) = 02(50), 03(75), 04(100), 05(125) or 06(150)

NO-HUB OUTLET

- Fig. 2005Y.....(A) ROUND TOP
- Fig. 2005Y.....(B) SQUARE TOP

SPEEDI-SET OUTLET

- Fig. 2005L.....(A) ROUND TOP
- Fig. 2005L.....(B) SQUARE TOP

Outlet Size	Nickel Bronze Strainer Head
▲ 02(50)	05(125) DIA or SQ
▲ 03(75)	06(150) DIA or SQ
▲ 04(100)	08(205) DIA or SQ

Strainer Size B	*Collar In High Position X		*Collar In Low Position XX		Free Area SQ IN (SQ CM)	
	MIN	MAX	MIN	MAX	ROUND	SQUARE
05 (125)	1 1/4(32)	2 1/4(57)	3/4(19)	1 5/8(41)	7(45)	6.5(42)
06 (150)	1 1/4(32)	2 1/4(57)	3/4(19)	1 5/8(41)	9(58)	12.5(81)
07 (180)	1 1/4(32)	2 1/4(57)	7/8(22)	1 7/8(48)	14(90)	11(71)
08 (205)	1 1/2(38)	2 1/2(64)	1(25)	1 7/8(48)	17(110)	14(90)
*09 (230)	1 1/2(38)	2 3/8(60)	1(25)	1 7/8(48)	18(116)	16(103)
*10 (255)	1 1/2(38)	2 3/8(60)	1(25)	1 7/8(48)	23(48)	16(103)

- ▼ This dimension to internal stop of speedi-set gasket.
- Add 3/8"(10) to all min/max dimensions for round strainers.
- * Collar is reversible to obtain extreme high and low strainer positions.
- ** Not available for 5"(125) size strainer.
- ** MIN 6 3/4"(170) hole required for core drilled application.

REGULARLY FURNISHED:

Duco Cast Iron Body with Flashing Collar and Adjustable Strainer Head as Indicated by Suffix Letter Selected.



NOTE: Dimensions shown in parentheses are in millimeters.

- ▲ Meets ASME Standard A112.6.3-2001 02(50), 03(75) or 04"(100) sizes only.

VARIATIONS:

- Flapper Type Backwater Valve -V
- ** Hinged Grate -H
- L Speedi-Set Service Weight 2(50), 3(75) & 4"(100) only
- LXH Speedi-Set Extra Heavy 2(50), 3(75) & 4"(100) only
- Sediment Bucket -B
- Trap Primer Connection -P050 1/2" (13) & -P075 3/4" (19)
- Vandal Proof Screws -U
- Wide Flanged Strainer (Specify Fig. DX2005)
- T Threaded Outlet
- Heelproof Grate -HP -AHP (Round) or -BHP (Square)
- Quad Close Trap Seal (Specify Fig. 2692)

OPTIONAL MATERIALS:

- Bronze Body -BB
- Chrome Plated Strainer -CP
- Galvanized Cast Iron Body -G
- Nickel Bronze Strainer -NB
- Polished Bronze Strainer -PB
- All Stainless Steel (Specify Fig. 9700)
- Stainless Steel Strainers -SS [Available in 05(125) & 06(150) sizes only]

Preferred option w/ round strainer to match corridor drains.

SEE PM 0457 FOR OPTIONAL STRAINER HEADS.

DRAWING NUMBER S2005
SCALE: NONE
DATE: 5-17-85
APPROVED BY: TD
CHECKED BY: TD
DRAWN BY: PJ
FIGURE NUMBER 2005

WE CAN ASSUME NO RESPONSIBILITY FOR USE OF SUPERSEDED OR VOID DATA
DIMENSIONS ARE SUBJECT TO MANUFACTURERS TOLERANCE AND CHANGE WITHOUT NOTICE

REV.	DATE	DESCRIPTION	BY	CKD. BY	WEIGHT POUNDS	VOLUME CUBIC FEET	FIGURE NUMBER
							2005

OPTION 2:

Engineering Specification

Job Name _____ Contractor _____

Job Location _____ Approval _____

Engineer _____ Contractor's P.O. No. _____

Approval _____ Representative _____

Tag _____

FD-100-C-A Floor Drain With Round Strainer Specification

Watts FD-100-C-A epoxy coated cast iron floor drain with anchor flange, reversible membrane clamp with primary and secondary weepholes, 1/4"(6) thick (specify diameter) adjustable nickel bronze (standard) strainer, and no hub (MJ) (standard) outlet.

Pipe Sizing		
Suffix	Description	
2	2"(51) Pipe Size	<input type="checkbox"/>
3	3"(76) Pipe Size	<input type="checkbox"/>
4	4"(102) Pipe Size	<input type="checkbox"/>
6	6"(152) Pipe Size	<input type="checkbox"/>

Outlet Type		
Suffix	Description	
NH	No Hub (MJ)	<input type="checkbox"/>
P	Push On	<input type="checkbox"/>
T	Threaded Outlet	<input type="checkbox"/>
X	Inside Caulk	<input type="checkbox"/>

Strainer		
Suffix	Description	
A5-1	5"(127) Dia., Nickel Bronze	<input type="checkbox"/>
A6-1	6"(152) Dia., Nickel Bronze	<input type="checkbox"/>
A7-1	7"(178) Dia., Nickel Bronze	<input type="checkbox"/>
A8-1	8"(206) Dia., Nickel Bronze	<input type="checkbox"/>

Options		
Suffix	Description	
-5	Sediment Bucket	<input type="checkbox"/>
-6	Vandal Proof	<input type="checkbox"/>
-8	Backwater Valve (2, 3, 4" Only)	<input type="checkbox"/>
-12	Galvanized Top	<input type="checkbox"/>
-13	All Galvanized	<input type="checkbox"/>
-15	Strainer Extension (DD-50)	<input type="checkbox"/>
-113M	Special Epoxy from 3M Range	<input type="checkbox"/>
-F4-50	4" Round Cast Iron Funnel	<input type="checkbox"/>
-F4-1	4" Round Nickel Bronze Funnel	<input type="checkbox"/>
-F6-1	6" Round Nickel Bronze Funnel	<input type="checkbox"/>
-G-50	4x9" Oval Cast Iron Funnel	<input type="checkbox"/>
-G-1	4x9" Oval Nickel Bronze Funnel	<input type="checkbox"/>
-S0	Side Outlet	<input type="checkbox"/>
-Z	Elastomeric Flange	<input type="checkbox"/>

Optional Body Material		
Suffix	Description	
-60	PVC Body w/Socket Outlet	<input type="checkbox"/>
-61	ABS Body w/Socket Outlet	<input type="checkbox"/>

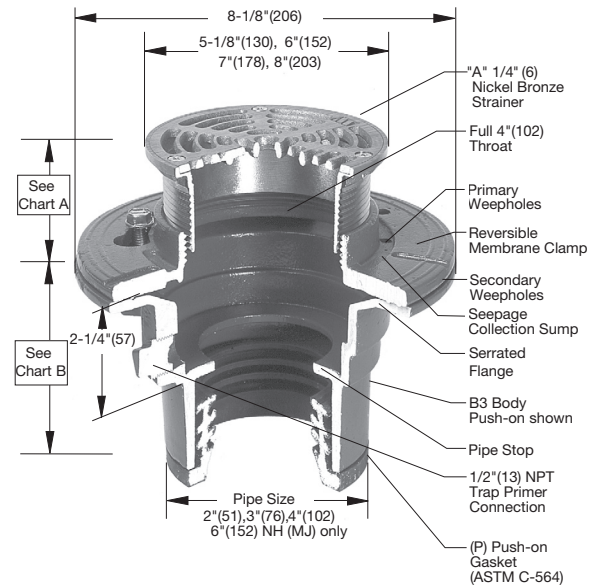


Chart A				
Str. Dia.	Min.	Max.	Load Rating	Free Area Sq. In.
5"(127)	13/16"(21)	2-1/2"(64)	*MD	8
6"(152)	7/8"(22)	2-3/4"(70)	*MD	9
7"(178)	11/16"(17)	2-1/2"(64)	*MD	12
8"(203)	7/8"(22)	2-7/8"(73)	*MD	18

Chart B					
Pipe Size	Std. No Hub	P Push On	T Female Thread	X Inside Caulk	60/61 PVC/ABS
2"(51)	3-5/8"(92)	4-1/4"(108)	4-1/4"(108)	4-1/2"(114)	3-3/4"(95)
3"(76)	3-5/8"(92)	4-1/4"(108)	4-1/4"(108)	4-1/2"(114)	3-3/4"(95)
4"(102)	3-5/8"(92)	4-1/4"(108)	4-1/4"(108)	4-1/2"(114)	4"(102)
6"(152)	3-1/2"(89)				

NOTICE

The information contained herein is not intended to replace the full product installation and safety information available or the experience of a trained product installer. You are required to thoroughly read all installation instructions and product safety information before beginning the installation of this product.

Watts product specifications in U.S. customary units and metric are approximate and are provided for reference only. For precise measurements, please contact Watts Technical Service. Watts reserves the right to change or modify product design, construction, specifications, or materials without prior notice and without incurring any obligation to make such changes and modifications on Watts products previously or subsequently sold.



USA: T: (800) 338-2581 • Watts.com
Canada: T: (888) 208-8927 • Watts.ca
Latin America: T: (52) 55-4122-0138 • Watts.com

Engineering Specification

Job Name _____
 Job Location _____
 Engineer _____
 Approval _____

Contractor _____
 Approval _____
 Contractor's P.O. No. _____
 Representative _____

FD-1100-C-L

Floor Drain with Square Stainless Steel Strainer

Specification

Watts FD-1100-C-L epoxy coated cast iron floor drain with membrane clamp, weepholes, and adjustable square Type 304 cast stainless steel grate.

Call customer service if you need assistance with technical details.

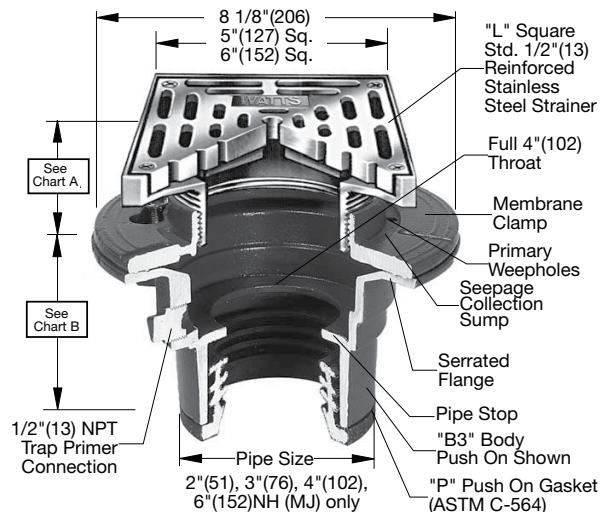


Chart A

Str. Dia.	Min.	Max.	Load Rating	Free Area Sq. In.
5"(127)	13/16"(21)	2 1/2"(64)	*XHD	6
6"(152)	7/8"(22)	2 3/4" (70)	*XHD	10

Chart B

Pipe Size	Std. No Hub	P Push On	T Female Thread	X Inside Caulk	60/61 PVC/ ABS
2"(51)	3 5/8"(92)	4 1/4"(108)	4 1/4"(108)	4 1/2"(114)	3-3/4"(95)
3"(76)	3 5/8"(92)	4 1/4"(108)	4 1/4"(108)	4 1/2"(114)	3-3/4" (95)
4"(102)	3 5/8"(92)	4 1/4"(108)	4 1/4"(108)	4 1/2"(114)	4"(102)
6"(152)	3 1/2"(89)				

NOTICE

*The load classification are in accordance with the American National Standards ASME A112.21.1M ASME Ratings are as follows:
 XHD - Safe Live Load 7500-10,000 lbs.(3375-4500 kg)
 The above categories are given as a guide only. Please consult factory.

NOTICE

The information contained herein is not intended to replace the full product installation and safety information available or the experience of a trained product installer. You are required to thoroughly read all installation instructions and product safety information before beginning the installation of this product.

Pipe Sizing		
Suffix	Description	
2	2"(51) Pipe Size	<input type="checkbox"/>
3	3"(76) Pipe Size	<input type="checkbox"/>
4	4"(102) Pipe Size	<input type="checkbox"/>
6	6"(152) Pipe Size	<input type="checkbox"/>

Outlet Type		
Suffix	Description	
NH	No Hub (MJ)	<input type="checkbox"/>
P	Push On	<input type="checkbox"/>
T	Threaded Outlet	<input type="checkbox"/>
X	Inside Caulk	<input type="checkbox"/>

Strainer		
Suffix	Description	
L5-3	5" x 5"(127x127), Stainless Steel	<input type="checkbox"/>
L6-3	6" x 6"(152x152), Stainless Steel	<input type="checkbox"/>

Optional Body Material		
Suffix	Description	
-60	PVC Body w/Socket Outlet	<input type="checkbox"/>
-61	ABS Body w/Socket Outlet	<input type="checkbox"/>

Options		
Suffix	Description	
-5	Sediment Bucket	<input type="checkbox"/>
-6	Vandal Proof	<input type="checkbox"/>
-8	Backwater Valve (3" & 4" only)	<input type="checkbox"/>
-10	Secured Top c/w Phillips Screws	<input type="checkbox"/>
-13	Galvanized Body	<input type="checkbox"/>
-15	Strainer Extension (DD-50)	<input type="checkbox"/>
-28	All Stainless Steel	<input type="checkbox"/>
-113M	Special Epoxy from 3M Range	<input type="checkbox"/>
-S0	Side Outlet	<input type="checkbox"/>

Watts product specifications in U.S. customary units and metric are approximate and are provided for reference only. For precise measurements, please contact Watts Technical Service. Watts reserves the right to change or modify product design, construction, specifications, or materials without prior notice and without incurring any obligation to make such changes and modifications on Watts products previously or subsequently sold.



USA: T: (800) 338-2581 • Watts.com
 Canada: T: (888) 208-8927 • Watts.ca
 Latin America: T: (52) 55-4122-0138 • Watts.com