



## SHOP DRAWING REVIEW

Project Name: Victoria Park Arena

Project No. CA-WSP-221-05263-00

Date 2025-07-07

Received:

Shop Drawing: Title: Plumbing Specialties

Revision: 00

Submission No.: 21-18

This review by consultant is for sole purpose of ascertaining conformance with general design concept. This review does not mean that consultant approves detail design inherent in shop drawings, responsibility for which remains with contractor, and such review does not relieve contractor of responsibility for errors or omissions in shop drawings or of contractor's responsibility for meeting all requirements of contract documents. Be responsible for dimensions to be confirmed and correlated at job site, for information that pertains solely to fabrication process or to techniques of construction and installation, and for coordination of the work of subtrades.

<input type="checkbox"/> Reviewed	<b>Mechanical Review Required</b> <input checked="" type="checkbox"/>	<b>Electrical Review Required</b> <input type="checkbox"/>
<input checked="" type="checkbox"/> Reviewed as Noted	<b>Reviewed by:</b> Val Kurdaliev	<b>Reviewed by:</b>
<input type="checkbox"/> Revise & Resubmit	<b>Review Date:</b> 2025-07-07	<b>Review Date:</b>

Item	Comments
	Plumbing Review Comments Below:
1.	<b>(FD) Finished Area Floor Drain</b> <ul style="list-style-type: none"><li>Specification: Lists ZURN Industries Ltd. as one of the acceptable manufacturers, but no model number is specified.</li><li>Submittal: Identifies ZURN model ZN415-B5 with body assembly TYPE B strainer.</li><li>Drawing Specialties: Reference JR Smith model 2006 LA-NB.</li></ul> <b>Clarification/Confirmation:</b> <ul style="list-style-type: none"><li>The ZURN ZN415-B5 model is matching with the specification, if contractor likes to choose JR Smith, submittal to be reissued with their proposed models.</li></ul>
2.	<b>(FD) Unfinished Area Floor Drain</b> <ul style="list-style-type: none"><li>Specification: Lists ZURN Industries Ltd. as one of the acceptable manufacturers, but no model number is specified.</li><li>Submittal: Identifies ZURN model Z-536 with Dura-Coated cast iron (D.C.C.I.) body and grate heavy duty adjustable floor drain, including trap primer connection.</li><li>Drawing Specialties: References JR Smith model #2110Y-B-PO50</li></ul> <b>Clarification/Confirmation:</b> <p>The ZURN Z-536 model is matching with the specification, if contractor likes to choose JR Smith, submittal to be reissued with their proposed models.</p>
3.	<b>(FFD) Funnel Floor Drain Finished Area</b> <ul style="list-style-type: none"><li>Specification: Lists ZURN Industries Ltd. as one of the acceptable manufacturers, but no model number is specified.</li><li>Submittal: Identifies ZURN model ZN-415-BE with TYPE BE strainer &amp; trap primer connection.</li><li>Drawing Specialties: References JR Smith model #2006Y-A6-3591</li></ul> <b>Clarification/Confirmation:</b> <p>The ZURN ZN-415-BE model is matching with the specification, if contractor likes to choose JR Smith, submittal to be reissued with their proposed models.</p>
4.	<b>(FD) Unfinished Area Floor Drain</b> <ul style="list-style-type: none"><li>Specification: Lists ZURN Industries Ltd. as one of the acceptable manufacturers, but no model number is specified.</li><li>Submittal: Identifies ZURN model ZN-415-B6 TYPE B Strainer.</li><li>Drawing Specialties: References JR Smith model #2110Y-B-PO50</li></ul> <b>Clarification/Confirmation:</b> <p>The ZURN ZN-415-B6 model is matching with the specification, if contractor likes to choose JR Smith, submittal to be reissued with their proposed models.</p>
5.	<b>(SD) Shower Drain</b> <ul style="list-style-type: none"><li>Specification: This Model is not Cited or detailed in the project specification.</li><li>Submittal: Specifies ZURN model ZXN-415-H "TYPE H" heavy-duty polished nickel bronze strainer. with a trap primer connection for the shower drain.</li><li>Drawing Specialties: References JR Smith model #2006LB-6"X6"-NB.</li></ul> <b>Clarification/Confirmation:</b> <p>The ZURN ZXN-415-H model is matching with the <b>Floor Drain specification</b>, if contractor likes to choose JR Smith, submittal to be reissued with their proposed models.</p>

6.	<p><b>(SD) Shower Drain</b></p> <ul style="list-style-type: none"> <li>Specification: This Model is not Cited or detailed in the project specification.</li> <li>Submittal: Specifies ZURN model ZN-415-Y6 "Type Y" polished nickel bronze square strainer with stainless steel screws, with a trap primer connection for the shower drain.</li> <li>Drawing Specialties: References JR Smith model #2006LB-6"X6"-NB.</li> </ul> <p><b>Clarification/Confirmation:</b> The ZURN ZN-415-Y6 model is matching with the <b>Floor Drain specification</b>, if contractor likes to choose JR Smith, submittal to be reissued with their proposed models.</p>
7.	<p><b>(SD) Linear Shower Drain</b></p> <ul style="list-style-type: none"> <li>Specification: This Model is not Cited or detailed in the project specification.</li> <li>Submittal: Specifies <b>ZURN model ZS-880, a stainless-steel linear shower drain.</b></li> <li>Drawing Specialties: References JR Smith model J.R. SMITH #2005M-NB- (100X300 STRAINER)</li> </ul> <p><b>Clarification/Confirmation:</b> The ZURN ZN-415-Y6 model is matching with the <b>Floor Drain specification</b>, if contractor likes to choose JR Smith, submittal to be reissued with their proposed models.</p>
8.	<p><b>(HD) HUB Drain</b></p> <ul style="list-style-type: none"> <li>Specification: Lists ZURN Industries Ltd. as one of the acceptable manufacturers, but no model number is specified.</li> <li>Submittal: Specifies ZURN model ZN-415-S Type S" circular adjustable hub funnel with a trap primer connection.</li> <li>Drawing Specialties: References JR Smith model #2005A-2645NB</li> </ul> <p><b>Clarification/Confirmation:</b> The ZURN <b>ZN-415-S</b> model is matching with the specification, if contractor likes to choose JR Smith, submittal to be reissued with their proposed models.</p>
9.	<p><b>((HD) HUB Drain</b></p> <ul style="list-style-type: none"> <li>Specification: Lists ZURN Industries Ltd. as one of the acceptable manufacturers, but no model number is specified.</li> <li>Submittal: Specifies ZURN model Z-415-S Type S" circular adjustable hub funnel with a trap primer connection.</li> <li>Drawing Specialties: References JR Smith model #2005A-2645.</li> </ul> <p><b>Clarification/Confirmation:</b> The <b>ZURN Z-415-S</b> model is matching with the specification, if contractor likes to choose JR Smith, submittal to be reissued with their proposed models.</p>
10.	<p><b>Heavy Duty FCO</b></p> <ul style="list-style-type: none"> <li>Specification: Model is not Cited or detailed in the project specification.</li> <li>Submittal: Specifies <b>ZURN model ZN-1400-HD</b>, a D.C.C.I. (Dura-Coated cast iron) floor cleanout with a polished nickel bronze heavy-duty top.</li> <li>Drawing Specialties: References <b>JR Smith Series 4000</b> to suit the floor finish.</li> </ul> <p><b>Clarification/Confirmation:</b> The ZURN model ZN-1400-HD model is acceptable, if contractor likes to choose JR Smith, submittal to be reissued with their proposed models.</p>
11.	<p><b>Light Duty FCO</b></p> <ul style="list-style-type: none"> <li>Specification: Model is not Cited or detailed in the project specification.</li> <li>Submittal: Specifies <b>ZURN model ZN-1400</b>, a D.C.C.I. (Dura-Coated cast iron) Light duty floor cleanout with a polished nickel bronze top.</li> <li>Drawing Specialties: References <b>JR Smith Series 4000</b> to suit the floor finish.</li> </ul> <p><b>Clarification/Confirmation:</b> The ZURN model ZN-1400 model is acceptable, if contractor likes to choose JR Smith, submittal to be reissued with their proposed models.</p>
12.	<p><b>. Recessed for Tile FCO</b></p> <ul style="list-style-type: none"> <li>Specification: Model is not Cited or detailed in the project specification.</li> <li>Submittal: Specifies <b>ZURN model ZN-1400-X</b>, a D.C.C.I. (Dura-Coated cast iron) Light Duty floor cleanout with a polished nickel bronze top.</li> <li>Drawing Specialties: References <b>JR Smith Series 4000</b> to suit the floor finish.</li> </ul> <p><b>Clarification/Confirmation:</b> The ZURN model ZN-1400-X model is acceptable, if contractor likes to choose JR Smith, submittal to be reissued with their proposed models.</p>
13.	<p><b>. Tiled Area FCO</b></p> <ul style="list-style-type: none"> <li>Specification: Model is not Cited or detailed in the project specification.</li> <li>Submittal: Specifies <b>ZURN model ZN-1400-T</b>, a D.C.C.I. (Dura-Coated cast iron) light duty floor cleanout with a polished nickel bronze top.</li> <li>Drawing Specialties: References <b>JR Smith Series 4000</b> to suit the floor finish.</li> </ul> <p><b>Clarification/Confirmation:</b> The ZURN model ZN-1400-T model is acceptable, if contractor likes to choose JR Smith, submittal to be reissued with their proposed models.</p>

14.	<p><b>Terrazzo Area FCO</b></p> <ul style="list-style-type: none"> <li>Specification: Model is not Cited or detailed in the project specification.</li> <li>Submittal: Specifies <b>ZURN model ZN-1400-Z</b>, a D.C.C.I. (Dura-Coated cast iron) floor cleanout with a polished nickel bronze top.</li> <li>Drawing Specialties: References <b>JR Smith Series 4000</b> to suit the floor finish.</li> </ul> <p><b>Clarification/Confirmation:</b></p> <ul style="list-style-type: none"> <li>The ZURN model ZN-1400-Z model is acceptable, if contractor likes to choose JR Smith, submittal to be reissued with their proposed models.</li> </ul>
15.	<p><b>Carpet Area FCO</b></p> <ul style="list-style-type: none"> <li>Specification: Model is not Cited.</li> <li>Submittal: Specifies <b>ZURN model ZN-1400-CM</b>, a D.C.C.I. (Dura-Coated cast iron) light duty floor cleanout with a polished nickel bronze top.</li> <li>Drawing Specialties: References not found.</li> </ul> <p><b>Clarification/Confirmation:</b></p> <ul style="list-style-type: none"> <li>The ZURN model ZN-1400-CM model is acceptable.</li> </ul>
16.	<p><b>Unfinished Area FCO</b></p> <ul style="list-style-type: none"> <li>Specification: Model is not Cited.</li> <li>Submittal: Specifies <b>ZURN model Z-1400</b>, Dura coated cast iron Extra Heavy Duty "Level-Trol" adjustable Floor Cleanout</li> <li>Drawing Specialties: References not found.</li> </ul> <p><b>Clarification/Confirmation:</b></p> <ul style="list-style-type: none"> <li>The ZURN model Z-1400 model is acceptable</li> </ul>
17.	<p><b>Non-Freeze wall Hydrant (NFHB)</b></p> <ul style="list-style-type: none"> <li>Specification: Lists ZURN Industries Ltd. as one of the acceptable manufacturers, but no model number is specified.</li> <li>Submittal: Specifies ZURN model Z1350 Narrow Wall Hydrant.</li> <li>Drawing Specialties: References JR Smith model #5509QTNB.</li> </ul> <p><b>Clarification/Confirmation:</b></p> <ul style="list-style-type: none"> <li>The ZURN model Z1350 model is matching with the specification, if contractor likes to choose JR Smith, submittal to be reissued with their proposed models.</li> </ul>
18.	<p><b>Roof Drain (RD)</b></p> <ul style="list-style-type: none"> <li>Specification: Lists Cast iron body <b>with aluminium dome</b>, ZURN Industries Ltd. as one of the acceptable manufacturers, but no model number is specified.</li> <li>Submittal: Specifies ZURN model Z125-C-E-R, D.C.C.I. Body with Low Silhouette Cast Iron Dome (4-1/4 [108] Dome Height).</li> <li>Drawing Specialties: References JR Smith model #1330Y-RC-AD.</li> </ul> <p><b>Clarification/Confirmation:</b></p> <ul style="list-style-type: none"> <li>The ZURN model Z125-C-E-R model is partially matching with the specification, <b>ZA can be used as aluminium dome.</b> if contractor likes to choose JR Smith, submittal to be reissued with their proposed models.</li> </ul>
19.	<p><b>Scupper Drain (SD)</b></p> <ul style="list-style-type: none"> <li>Specification: Model is not Cited in specification.</li> <li>Submittal: Specifies <b>ZURN model Z187</b>, D.C.C.I. Body with Grate.</li> <li>Drawing Specialties: References JR Smith model #1510T.</li> </ul> <p><b>Clarification/Confirmation:</b></p> <ul style="list-style-type: none"> <li>The ZURN model <b>ZURN model Z187</b> model is acceptable.</li> </ul>
20.	<p><b>ELECTRONIC TRAP PRIMER (TSP)</b></p> <ul style="list-style-type: none"> <li>Specification: Lists Precision Plumbing Products model #PT Series.</li> <li>Submittal: Specifies ZURN model Z1020XL Electronic Trap Primer.</li> <li>Drawing Specialties: References not found.</li> </ul> <p><b>Clarification/Confirmation:</b></p> <ul style="list-style-type: none"> <li>The ZURN model ZURN Z1020XL is not matching with the specification Precision Plumbing Products model #PT Series, if contractor likes to choose Precision Plumbing Products model #PT Series, submittal to be reissued with their proposed models.</li> </ul>
21.	<p><b>Interior Hose Bib</b></p> <ul style="list-style-type: none"> <li>Submittal: Zurn Z1333XL hose bib match with the project specification.</li> </ul> <p><b>Clarification/Confirmation:</b></p> <ul style="list-style-type: none"> <li>The ZURN model Z1333XL hose bib model is matching with the specification.</li> </ul>
22.	<p><b>Hose Bib</b></p> <ul style="list-style-type: none"> <li>Submittal: Zurn Z1341XL hose bib match with the project specifications.</li> </ul> <p><b>Clarification/Confirmation:</b></p> <ul style="list-style-type: none"> <li>The ZURN model Z1341XL hose bib model is matching with the specification.</li> </ul>
23.	<p><b>Hose Bib</b></p> <ul style="list-style-type: none"> <li>Submittal: Zurn Z841L1-RC hose bib for hot and cold-water service match with the project specifications.</li> </ul> <p><b>Clarification/Confirmation:</b></p> <ul style="list-style-type: none"> <li>The ZURN model Z841L1-RC hose bib model is matching with the specification.</li> </ul>

24.	<p><b>Exterior non-freeze wall Hydrant (NFHB)</b></p> <ul style="list-style-type: none"> <li>Specification: Lists ZURN Industries Ltd. as one of the acceptable manufacturers, but no model number is specified.</li> <li>Submittal: Identifies specifies Zurn Z1320XL.</li> <li>Drawing Specialties: Reference J.R. Smith #5509QTNB.</li> </ul> <p><b>Clarification/Confirmation:</b></p> <ul style="list-style-type: none"> <li>The Zurn Z1320XL model is matching with the specification, if contractor likes to choose JR Smith, submittal to be reissued with their proposed models.</li> </ul>
25.	<p><b>Shock Absorbers (WHA)</b></p> <ul style="list-style-type: none"> <li>Submittal: Z1700 Shoktrol water hammer arrestors match with the project specifications.</li> </ul> <p><b>Clarification/Confirmation:</b></p> <ul style="list-style-type: none"> <li>The Z1700 Shoktrol water hammer arrestors model is matching with the specification.</li> </ul>
26.	<p><b>Line Clean out (Line CO)</b></p> <ul style="list-style-type: none"> <li>Specification: Lists TY pipe fitting with an extra heavy brass plug screwed into the fitting.</li> <li>Submittal: Identifies Zurn Z1440 Dura-Coated Cast Iron Body and ABS Plug, Bronze Plug.</li> <li>Drawing Specialties: Reference J.R. Smith Series 4420.</li> </ul> <p><b>Clarification/Confirmation:</b></p> <ul style="list-style-type: none"> <li>Zurn Z1440 is proposed as a substitution &amp; is acceptable, if contractor likes to choose JR Smith, submittal to be reissued with their proposed models.</li> </ul>
27.	<p><b>Stack Clean out (CO)</b></p> <ul style="list-style-type: none"> <li>Specification: Lists For copper piping: Bronze or copper cleanout tees, each complete with a bronze ferrule. For cast iron piping: "BARRETT" type cast iron cleanout tees, gas- and water-tight, with a bolted cover.</li> <li>Submittal: Identifies Zurn Z1445 Dura-Coated Cast Iron Body and ABS Plug, Bronze Plug.</li> <li>Drawing Specialties: Reference not found.</li> </ul> <p><b>Clarification/Confirmation:</b></p> <p>Zurn Model Z1445 is acceptable for Cast Iron piping, separate submittal to be proposed for copper piping.</p>
28.	<p><b>Urinal Clean out</b></p> <ul style="list-style-type: none"> <li>Submittal: Zurn Z1666-1 cleanout with vandal proof screws match with the project specification.</li> </ul> <p><b>Clarification/Confirmation:</b></p> <p>The Zurn Z1666-1 cleanout model is matching with the specification.</p>
29.	<p><b>Floor Clean out (FCO)</b></p> <ul style="list-style-type: none"> <li>Submittal: Zurn ZN-1602-SP adjustable round medium-duty floor cleanout match with the project specification.</li> </ul> <p><b>Clarification/Confirmation:</b></p> <p>The Zurn ZN-1602-SP medium-duty floor cleanout model is matching with the specification.</p>
30.	<p><b>. Floor Drain (FD)</b></p> <ul style="list-style-type: none"> <li>Specification: Model is not Cited in specification.</li> <li>Submittal: Zurn ZX415-A floor and shower drain, featuring a Dura-Coated cast iron body with bottom outlet, invertible membrane clamp, adjustable collar, and "Type A" heavy-duty cast iron strainer with trap primer connection noted.</li> <li>Drawing Specialties: Reference not found.</li> </ul> <p><b>Clarification/Confirmation:</b></p> <p>Proposed Zurn model ZX415-A is acceptable.</p>
31.	<p><b>. Floor Drain (FD)</b></p> <ul style="list-style-type: none"> <li>Specification: Model is not Cited in specification.</li> <li>Submittal: Zurn ZN415-B5 floor and shower drain, featuring a Dura-Coated cast iron body with bottom outlet, invertible membrane clamp, adjustable collar, and "Type B" polished nickel bronze strainer with stainless steel screws, with trap primer connection &amp; vandal-proof secured top noted.</li> <li>Drawing Specialties: Reference not found.</li> </ul> <p><b>Clarification/Confirmation:</b></p> <p>Proposed Zurn model ZX415-B5 is acceptable.</p>
32.	<p><b>Funnel Floor Drain (FFD)</b></p> <ul style="list-style-type: none"> <li>Specification: Model is not Cited in specification.</li> <li>Submittal: Zurn Z415-BF funnel drain, featuring a galvanized cast iron body with a vandal-proof secured top noted.</li> <li>Drawing Schedule: The corresponding specification or detail is missing from the IFC drawings.</li> </ul> <p><b>Clarification/Confirmation:</b></p> <p>Proposed Zurn model ZX415-BF is acceptable.</p>
33.	<p><b>Funnel 4" (FFD)</b></p> <ul style="list-style-type: none"> <li>Specification: Model is not Cited in specification.</li> <li>Submittal: Zurn Z415-BE funnel floor drain with trap primer and sediment bucket is noted.</li> <li>Drawing Specialties: The corresponding specification or detail is missing from the IFC drawings.</li> </ul> <p><b>Clarification/Confirmation:</b></p> <p>Proposed Zurn model Z415-BE is acceptable.</p>

34.	<p><b>Roof Drain (RD)</b></p> <ul style="list-style-type: none"> <li>Specification: Model is not Cited in specification.</li> <li>Submittal: Zurn Z121 roof drain with sump receiver, featuring a Dura-Coated cast iron body, aluminium dome, and underdeck clamp noted.</li> <li>Drawing Specialties: The corresponding specification or detail is missing from the IFC drawings.</li> </ul> <p><b>Clarification/Confirmation:</b> Proposed Zurn model Z121 is acceptable.</p>
35.	<p><b>Roof Drain (RD)</b></p> <ul style="list-style-type: none"> <li>Specification: Model is not Cited in specification.</li> <li>Submittal: Zurn Z100 roof drain with sump receiver, featuring a Dura-Coated cast iron body, aluminium dome, and underdeck clamp noted.</li> <li>Drawing Specialties: The corresponding specification or detail is missing from the IFC drawings.</li> </ul> <p><b>Clarification/Confirmation:</b> Proposed Zurn model Z100 is acceptable.</p>
36.	<p><b>Backwater Valve Flapper type (BWV)</b></p> <ul style="list-style-type: none"> <li>Submittal: Zurn Z-1095-15 flapper-type backwater valve match with the project specification.</li> <li>Drawing Specialties: The corresponding specification or detail is missing from the IFC drawings.</li> </ul> <p><b>Clarification/Confirmation:</b> The Zurn Z-1095-15 flapper-type backwater valve model is matching with the specification.</p>
37.	<p><b>Washing Machine (MMV)</b></p> <ul style="list-style-type: none"> <li>Specification: Model is not Cited in specification.</li> <li>Submittal: Zurn WM2961 encased washing machine valve is noted.</li> <li>Drawing Specialties: The corresponding specification or detail is missing from the IFC drawings.</li> </ul> <p><b>Clarification/Confirmation:</b> Proposed Zurn model WM2961 is acceptable.</p>
38.	<p><b>Water Closet Carrier System (W-1 &amp; WH-1)</b></p> <ul style="list-style-type: none"> <li>Specification Document: Watts #ISCA-101-M11 single horizontal adjustable toilet carrier is specified.</li> <li>Submittal: Zurn Z1201-N_4 EZ Carry adjustable horizontal high-performance siphon jet no-hub water closet carrier system is noted.</li> <li>Drawing Specialties: The corresponding specification or detail is missing from the IFC drawings.</li> </ul> <p><b>Clarification/Confirmation:</b> That Zurn Z1201-N_4 EZ is acceptable, if contractor likes to choose Watts, submittal to be reissued with their proposed models.</p>
39.	<p><b>Water Closet Carrier System (W-1 &amp; WH-1)</b></p> <ul style="list-style-type: none"> <li>Specification: Watts #ISCA-101-M11 single horizontal adjustable toilet carrier is specified.</li> <li>Submittal: Zurn Z1201-ND4 Dura-Coated cast iron (D.C.C.I.) with Zurn ZZ adjustable coupling horizontal high-performance back-to-back siphon jet no-hub water closet carrier system is noted.</li> <li>Drawing Specialties: The corresponding specification or detail is missing from the IFC drawings.</li> </ul> <p><b>Clarification/Confirmation:</b> That Zurn Z1201-ND4 is acceptable, if contractor likes to choose Watts, submittal to be reissued with their proposed models.</p>
40.	<p><b>Concealed arm system Wall Lavatories (LH-2)</b></p> <ul style="list-style-type: none"> <li>Specification: Watts #WCA-411-CA-481 basin carrier is specified.</li> <li>Submittal: Zurn Z1231 Dura coated system with concealed arm system for wall-hung lavatories is noted.</li> <li>Drawing Schedule: The corresponding specification or detail is missing from the IFC drawings.</li> </ul> <p><b>Clarification/Confirmation:</b> That Zurn Z1231 concealed arm system is acceptable, if contractor likes to choose Watts, submittal to be reissued with their proposed models.</p>
41.	<p><b>Plate type system Wall Urinals (WF)</b></p> <ul style="list-style-type: none"> <li>Specification: Model is not Cited in specification.</li> <li>Submittal: Zurn Z1221 Dura coated system with universal plate carrier system for wall-hung urinals is noted.</li> <li>Drawing Specialties: The corresponding specification or detail is missing from the IFC drawings.</li> </ul> <p><b>Clarification/Confirmation:</b> Proposed Zurn model Z1221 is acceptable.</p>
42.	<p><b>Plate type system Water Coolers (BFS)</b></p> <ul style="list-style-type: none"> <li>Specification: Watts #CA-311 fixture carrier is specified.</li> <li>Submittal: Zurn Z1225 Dura coated system with universal plate carrier system for water coolers is noted.</li> <li>Drawing Specialties: The corresponding specification or detail is missing from the IFC drawings.</li> </ul> <p><b>Clarification/Confirmation:</b> That Zurn Z1225 plate-type carrier system is acceptable, if contractor likes to choose Watts, submittal to be reissued with their proposed models.</p>

End of Review



# RAFAT

8850 GEORGE BOLTON PARKWAY, CALEDON, ONTARIO L7E 2Y4

Shop Drawings Transmittal No:	22-11-00-03R0
----------------------------------	---------------

Project Name:	Construction of Victoria Park Arena and Brampton Sports Hall of Fame	Project No.	NRFP2024-232
		DATE:	24 Jun 2025
		Submittal Required Return Date:	08 Jul 2025
Submittal No:	93		

Title:	Plumbing Specialties
--------	----------------------

To:	Mark Falkenburger	
-----	-------------------	--

Checked by:	Veronica Soulaka	To Be Reviewed By the Following Consutlants	Architecture49 & WSP
-------------	------------------	--	----------------------

Submitted for:	Review and Approval
----------------	---------------------

Consultants Response	
----------------------	--



SHOP DRAWING  
DATA SHEET

*Affixing this stamp confirms that an administrative approval and/or a review of compliance with shop drawings or specifications was made, but does not entail the liability of the author of the work or its owner with regards to this shop drawing or data sheet, for which the contractor is the sole responsible.*

☐ Reviewed

☐ Revise and resubmit

☐ Rejected

☒ Revise as noted

By: V.K. Mech.      Date: 2025/07/07

Project #: 209-0028-00



**SUBMITTAL REVIEW**

For general compliance with the design concept and contract documents. Subcontractor is solely responsible for jobsite correlation and correctness of all ratings, sizings, type, style, dimensions, finish, quantities and satisfactory fitting to other work and equipment. This review does not change the intent of the contract document.

REVIEWED

RESUBMIT

REJECTED



54 Audia Court, Unit 2  
Concord, ON L4K 3N5  
(905)-738-1400

## Submittal 24-280-020

PROJECT NAME	PROJECT ADDRESS	DATE SUBMITTED
VICTORIA PARK ARENA	24-280 20 Victoria Crescent, Brampton, ON L6T 1E4	Jun 5, 2025

TO	FROM
Abdullah Hissamuddin	INZAMAN KHAN
COMPANY	COMPANY
RAFAT GENERAL CONTRACTOR INC.	Consult Mechanical Inc.
EMAIL	EMAIL
abdullah.hissam@rafat.ca	inzaman@consultmechanical.com
ADDRESS	ADDRESS
8850 GEORGE BOLTON PKWY BOLTON, ON L7E 2Y4	54 Audia Court, Unit 2 Concord, ON L4K 3N5

---

### Title

Plumbing Specialities (22 11 00)

---

### Description

Plumbing Specialities: FD / FFD / SD / HD / FCO / CO / NFHB / RD / SCD / TSP / HB / WHA / BWV / W-1, WH-1, LH-2 & WF CARRIER / BFS

---

### Package Items

SPEC

SUBSECTION

ITEM

TYPE





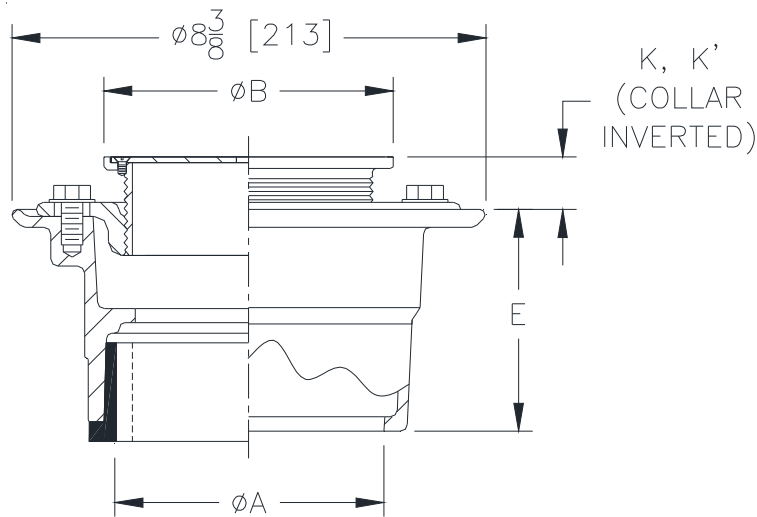
# ZN415-B

## BODY ASSEMBLY WITH "TYPE B" STRAINER

SPECIFICATION SHEET

TAG Fin Area FD

Dimensional Data (inches and [ mm ]) are Subject to Manufacturing Tolerances and Change Without Notice



Strainer Designation	Dimensions In Inches [mm]						Approx. Weight lbs [kg]	Strainer Open Area Sq. In. [sq. cm]
	A' Pipe Size	B' Pipe Size	K		K'			
			Min.	Max.	Min.	Max.		
✓ -B5	2,3,4 [51, 76,102]	5 [127]	1/2 [13]	1-5/8 [41]	1-3/8 [35]	2-3/8 [60]	11 [5]	8 [52]
-B6	2,3,4 [51, 76,102]	6 [152]	3/4 [19]	1-3/4 [44]	1-5/8 [41]	2-3/4 [70]	13 [6]	9 [58]
-B7	2,3,4 [51, 76,102]	7 [178]	1 [25]	2-1/4 [57]	2 [51]	3-1/8 [79]	14 [6]	12 [77]
-B8	3,4 [76,102]	8 [203]	1-1/8 [29]	2-1/4 [57]	2 [51]	3-1/8 [79]	16 [7]	18 [116]
-B8	6 [152]	8 [203]	1-1/8 [29]	2-1/4 [57]	2 [51]	3-1/8 [79]	18 [8]	18 [116]

### ENGINEERING SPECIFICATION: ZURN ZN-415-B

Floor and Shower Drain, Dura-Coated cast iron body with bottom outlet, combination invertible membrane clamp and adjustable collar with "Type B" polished nickel bronze strainer with stainless steel screws.

### OPTIONS (Check/specify appropriate options)

#### PIPE SIZE

2,3,4 [51,76,102]  
2,3,4 [51,76,102]  
2,3,4,6 [51,76,102,152]  
2,3,4 [51,76,102]  
2,3,4 [51,76,102]

#### (Specify size/type) OUTLET

\_\_\_\_\_ IC Inside Caulk  
\_\_\_\_\_ IG Inside Gasket  
\_\_\_\_\_ IP Threaded  
\_\_\_\_\_ NH No-Hub  
\_\_\_\_\_ NL Neo-Loc

#### E BODY HT. DIM.

3-7/8 [98]  
3-7/8 [98]  
2-5/8 [67]  
3-7/8 [98]  
4-5/8 [117]

### SUFFIXES

\_\_\_\_\_ -AR Acid Resistant Epoxy Coated Cast Iron  
\_\_\_\_\_ -FS Floating Slab  
\_\_\_\_\_ -G Galvanized Cast Iron  
✓ \_\_\_\_\_ -P 1/2" [13mm] Trap Primer Connection  
\_\_\_\_\_ -U 1" [25mm] - 3" [76mm] High Extension Adapter  
\_\_\_\_\_ -VP Vandal-Proof Secured Top

\_\_\_\_\_ -X Squeezin Backwater Valve  
\_\_\_\_\_ -Y Sediment Bucket  
\_\_\_\_\_ -414 4" [102mm] Diameter Cast Iron Funnel  
\_\_\_\_\_ -6NH 6" [152mm] No-Hub Outlet (6IP w/Z-1040)  
\_\_\_\_\_ -90 2" [51mm], 3" [76mm] or 4" [102mm] Side Outlet Body Assembly (IP or NH only)

\* Regularly furnished unless otherwise specified.

Zurn Industries, LLC | Specification Drainage Operation  
1801 Pittsburgh Avenue, Erie, PA U.S.A. 16502 · Ph. 855-663-9876, Fax 814-454-7929  
In Canada | Zurn Industries Limited  
3544 Nashua Drive, Mississauga, Ontario L4V 1L2 · Ph. 905-405-8272, Fax 905-405-1292  
[www.zurn.com](http://www.zurn.com)

Rev. B  
Date: 07/06/2017  
C.N. No. 137250  
Prod. | Dwg. No. ZN415-B



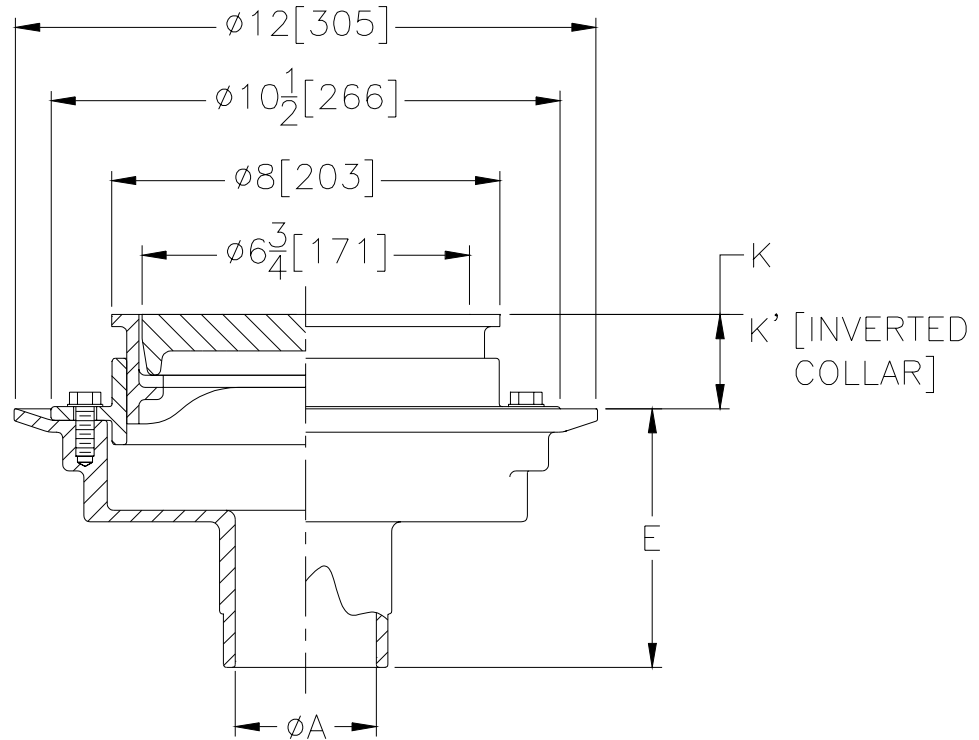
**Z-536**  
**8" [203mm] DIAMETER**  
**HEAVY-DUTY ADJUSTABLE FLOOR DRAIN**

SPECIFICATION SHEET

TAG Unfin Area FD



Dimensional Data (inches and [mm]) are Subject to Manufacturing Tolerances and Change Without Notice



Dimensions In Inches / [mm]					Approx. Wt. Lbs. / [kg]	Grate Open Area Sq. In. / [sq cm]
A Pipe Size Inches / [mm]	K		K'			
	Min.	Max.	Min.	Max.		
3-4-6 [76-102-152]	1-1/2 [38]	2-1/4 [57]	2-1/4 [57]	3 [76]	29 [13]	17 [112]

**ENGINEERING SPECIFICATION: ZURN Z-536 8" [203mm] diameter heavy-duty adjustable floor drain, Dura-Coated cast iron bottom outlet body, invertible clamping collar, adjustable leveling frame, and deep grate.**

**OPTIONS** (Check/specify appropriate options)

**PIPE SIZE**

2 thru 6 [50 thru 150]  
2 thru 6 [50 thru 150]  
2 thru 6 [50 thru 150]  
2,3,4 [50,75,100]

(Specify size/type) **OUTLET**

\_\_\_\_\_ IC Inside Caulk  
\_\_\_\_\_ IP Threaded  
\_\_\_\_\_ NH No-Hub  
\_\_\_\_\_ NL Neo-Loc

**E BODY HT. DIM.**

5 1/4 [133]  
3 3/4 [95]  
5 1/4 [133]  
4 5/8 [117]

**PREFIXES**

☒ Z- D.C.C.I. Body with Grate\*  
\_\_\_\_\_ ZN- D.C.C.I. Body with Polished Nickel Bronze Top\*  
\*Add 3/16" [5mm] to Min./Max. Dimension

**SUFFIXES**

\_\_\_\_\_ -F0 3-1/2" x 9" [89 x 229] Funnel  
\_\_\_\_\_ -G Galvanized  
☒ -P 1/2" [13mm] Trap Primer Connection  
\_\_\_\_\_ -VP Vandal-Proof Secured Top  
\_\_\_\_\_ -Y Sediment Bucket

\*REGULARLY FURNISHED UNLESS OTHERWISE SPECIFIED

REV. A    DATE: 1/21/00    C.N. NO. 84099

DWG. NO. 63662    PRODUCT NO. Z-536



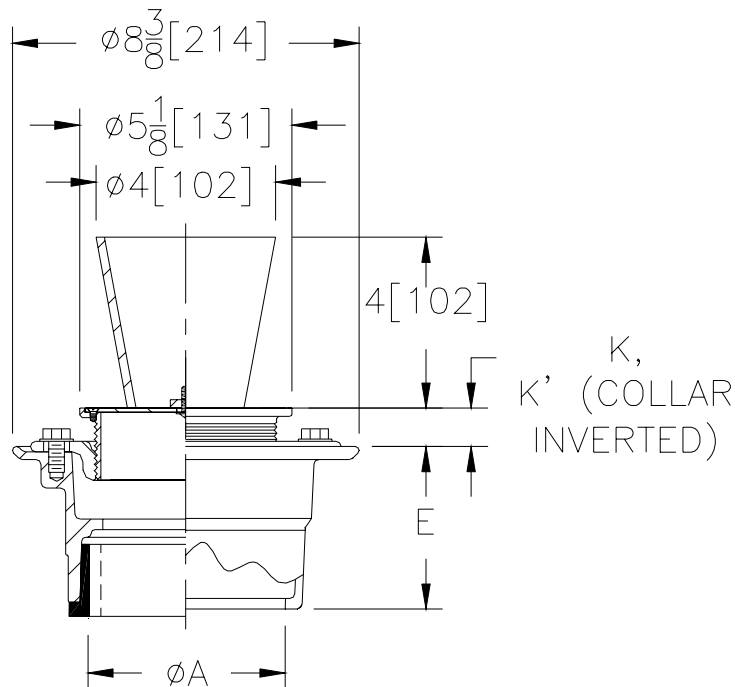
**ZN-415-BE**  
**BODY ASSEMBLY**  
**WITH "TYPE BE" STRAINER**

**SPECIFICATION SHEET**

**TAG** FFD FIN AREA



Dimensional Data (inches and [mm]) are Subject to Manufacturing Tolerances and Change Without Notice



Str. Desig.	Dimensions In Inches / [mm]						Approx. Wt. Lbs. / (kg)	Strainer Open Area Sq. In. / [sq cm]
	A Pipe Size	Str. Dia.	K		K'			
			Min.	Max.	Min.	Max.		
-BE5	2-3-4-6 [51-76-102-152]	5 [127]	1/2 [13]	1-5/8 [41]	1-3/8 [35]	2-3/8 [60]	8 [4]	5 [32]

**ENGINEERING SPECIFICATION:** ZURN ZN-415-BE Funnel Floor Drain, Dura-Coated cast iron body with bottom outlet, combination invertible membrane clamp and adjustable collar with "Type BE" polished nickel bronze round funnel grate with stainless steel screws.

**OPTIONS** (Check/specify appropriate options)

**PIPE SIZE**

2,3,4 [50,75,100]  
2,3,4 [50,75,100]  
2,3,4,6 [50,75,100,152]  
2,3,4 [50,75,100]  
2,3,4 [50,75,100]

(Specify size/type) **OUTLET**

\_\_\_\_ IC Inside Caulk  
\_\_\_\_ IG Inside Gasket  
\_\_\_\_ IP Threaded  
\_\_\_\_ NH No-Hub  
\_\_\_\_ NL Neo-Loc

**E BODY HT. DIM.**

3 7/8 [98]  
3 7/8 [98]  
2 5/8 [67]  
3 7/8 [98]  
4 5/8 [117]

**SUFFIXES**

\_\_\_\_ -AR Acid Resistant Epoxy Coated Cast Iron  
\_\_\_\_ -FS Floating Slab  
\_\_\_\_ -G Galvanized Cast Iron  
✓ -P 1/2" [13mm] Trap Primer Connection  
\_\_\_\_ -U 1" [25mm] - 3" [76mm] High Extension Adapter  
\_\_\_\_ -VP Vandal-Proof Secured Top  
\_\_\_\_ -X Squeezin Backwater Valve  
\_\_\_\_ -Y Sediment Bucket  
\_\_\_\_ -6NH 6" [152mm] No-Hub Outlet (6IP w/Z-1040)  
\_\_\_\_ -90 2" [51mm], 3" [76mm] or 4" [102mm] Side  
Outlet Body Assembly (IP or NH only)

**REV. A** **DATE: 06/16/05** **C.N. NO. 89830**

**DWG. NO. 63638** **PRODUCT NO. ZN-415-BE**

\*REGULARLY FURNISHED UNLESS OTHERWISE SPECIFIED



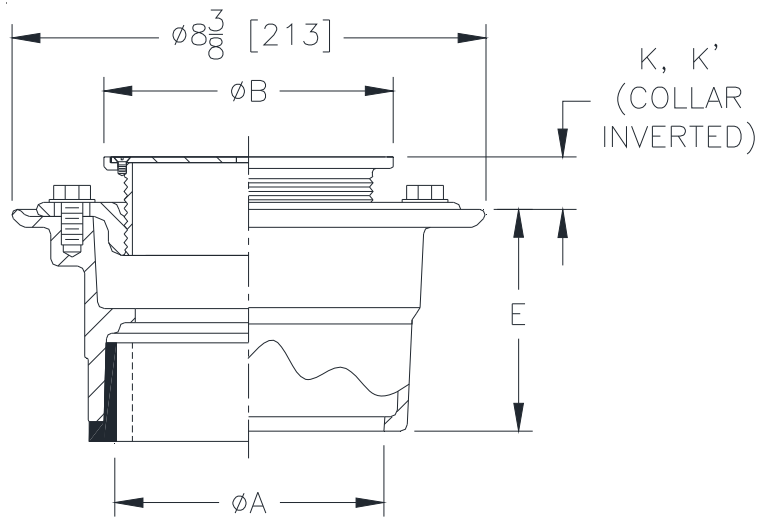
# ZN415-B

## BODY ASSEMBLY WITH "TYPE B" STRAINER

SPECIFICATION SHEET  
TAG UNFIN AREA FD



Dimensional Data (inches and [ mm ]) are Subject to Manufacturing Tolerances and Change Without Notice



Strainer Designation	Dimensions In Inches [mm]						Approx. Weight lbs [kg]	Strainer Open Area Sq. In. [sq. cm]
	A' Pipe Size	B' Pipe Size	K		K'			
			Min.	Max.	Min.	Max.		
-B5	2,3,4 [51, 76,102]	5 [127]	1/2 [13]	1-5/8 [41]	1-3/8 [35]	2-3/8 [60]	11 [5]	8 [52]
✓ -B6	2,3,4 [51, 76,102]	6 [152]	3/4 [19]	1-3/4 [44]	1-5/8 [41]	2-3/4 [70]	13 [6]	9 [58]
-B7	2,3,4 [51, 76,102]	7 [178]	1 [25]	2-1/4 [57]	2 [51]	3-1/8 [79]	14 [6]	12 [77]
-B8	3,4 [76,102]	8 [203]	1-1/8 [29]	2-1/4 [57]	2 [51]	3-1/8 [79]	16 [7]	18 [116]
-B8	6 [152]	8 [203]	1-1/8 [29]	2-1/4 [57]	2 [51]	3-1/8 [79]	18 [8]	18 [116]

### ENGINEERING SPECIFICATION: ZURN ZN-415-B

Floor and Shower Drain, Dura-Coated cast iron body with bottom outlet, combination invertible membrane clamp and adjustable collar with "Type B" polished nickel bronze strainer with stainless steel screws.

### OPTIONS (Check/specify appropriate options)

#### PIPE SIZE

2,3,4 [51,76,102]  
2,3,4 [51,76,102]  
2,3,4,6 [51,76,102,152]  
2,3,4 [51,76,102]  
2,3,4 [51,76,102]

#### (Specify size/type) OUTLET

\_\_\_\_\_ IC Inside Caulk  
\_\_\_\_\_ IG Inside Gasket  
\_\_\_\_\_ IP Threaded  
\_\_\_\_\_ NH No-Hub  
\_\_\_\_\_ NL Neo-Loc

#### E BODY HT. DIM.

3-7/8 [98]  
3-7/8 [98]  
2-5/8 [67]  
3-7/8 [98]  
4-5/8 [117]

### SUFFIXES

\_\_\_\_\_ -AR Acid Resistant Epoxy Coated Cast Iron  
\_\_\_\_\_ -FS Floating Slab  
✓ \_\_\_\_\_ -G Galvanized Cast Iron  
\_\_\_\_\_ -P 1/2" [13mm] Trap Primer Connection  
\_\_\_\_\_ -U 1" [25mm] - 3" [76mm] High Extension Adapter  
\_\_\_\_\_ -VP Vandal-Proof Secured Top

\_\_\_\_\_ -X Squeezin Backwater Valve  
\_\_\_\_\_ -Y Sediment Bucket  
\_\_\_\_\_ -414 4" [102mm] Diameter Cast Iron Funnel  
\_\_\_\_\_ -6NH 6" [152mm] No-Hub Outlet (6IP w/Z-1040)  
\_\_\_\_\_ -90 2" [51mm], 3" [76mm] or 4" [102mm] Side Outlet Body Assembly (IP or NH only)

\* Regularly furnished unless otherwise specified.

Zurn Industries, LLC | Specification Drainage Operation  
1801 Pittsburgh Avenue, Erie, PA U.S.A. 16502 · Ph. 855-663-9876, Fax 814-454-7929  
In Canada | Zurn Industries Limited  
3544 Nashua Drive, Mississauga, Ontario L4V 1L2 · Ph. 905-405-8272, Fax 905-405-1292  
[www.zurn.com](http://www.zurn.com)

Rev. B  
Date: 07/06/2017  
C.N. No. 137250  
Prod. | Dwg. No. ZN415-B

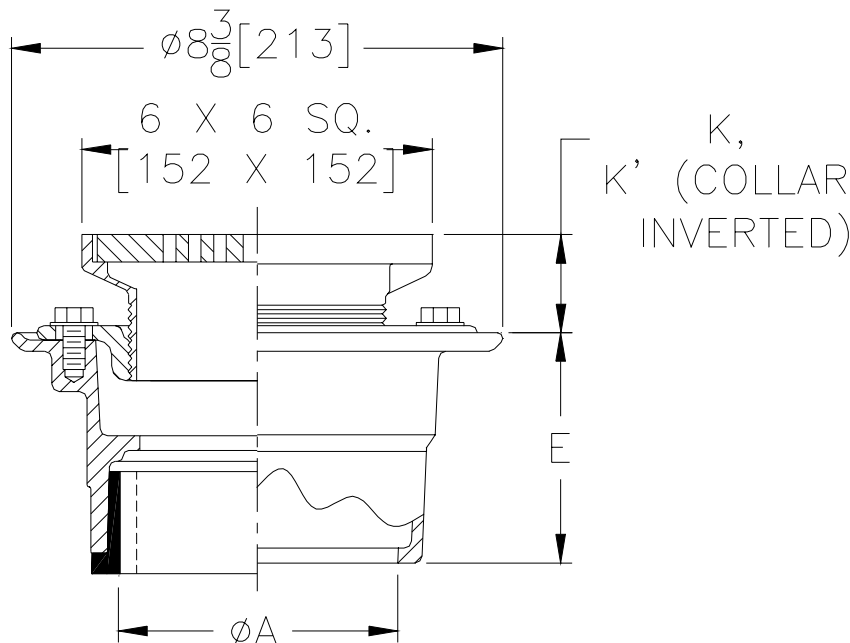


# ZXN-415-H

## BODY ASSEMBLY WITH "TYPE H" STRAINER

TAG SD

Dimensional Data (inches and [ mm ]) are Subject to Manufacturing Tolerances and Change Without Notice



Str. Desig	Dimensions In Inches / [mm]						Approx. Wt. Lbs. / (kg)	Strainer Open Area Sq. In. / [sq cm]
	A Pipe Size	Str. Dia.	K		K'			
			Min.	Max.	Min.	Max.		
-H6	2-3-4-6 [51-76-102-152]	6 x 6 [152 x 152]	1-1/4 [32]	2 [51]	2-1/8 [54]	3-1/4 [83]	15 [7]	3 [19]

**ENGINEERING SPECIFICATION:** ZURN ZXN-415 Floor and Shower Drain, Dura-Coated cast iron body with bottom outlet, combination invertible membrane clamp and adjustable collar with "TYPE H" heavy-duty polished nickel bronze strainer.

**OPTIONS** (Check/specify appropriate options)**PIPE SIZE**(Specify size/type) **OUTLET****'E' BODY HT. DIM.**

2 thru 4 [50 thru 100]	___	IC	Inside Caulk	3 7/8 [98]
2 thru 4 [50 thru 100]	___	IG	Inside Gasket	3 7/8 [98]
2 thru 4, 6 [50 thru 100, 152]	___	IP	Threaded	2 5/8 [67]
2 thru 4 [50 thru 100]	___	NH	No-Hub	3 7/8 [98]
2 thru 4 [50 thru 100]	___	NL	Neo-Loc	4 5/8 [117]

**SUFFIXES**

___	-AR	Acid Resisting Epoxy Coated Cast Iron
___	-G	Galvanized Cast Iron
<input checked="" type="checkbox"/>	-P	1/2" [13] Trap Primer Connection
___	-U	1" [25] - 3" [76] High Extension Adapter
___	-VP	Vandal Proof Secured Top
___	-X	Squeezin Backwater Valve
___	-Y	Sediment Bucket
___	-6NH	6" [152] No-Hub Outlet (6IP w/Z-1040)
___	-90	2" [51], 3" [76] or 4" [102] Side Outlet Body Assembly (IP or NH only)

\*REGULARLY FURNISHED UNLESS OTHERWISE SPECIFIED

REV. DATE: 11/15/99 C.N. NO. 83464

DWG. NO. 65032 PRODUCT NO. ZXN-415-H



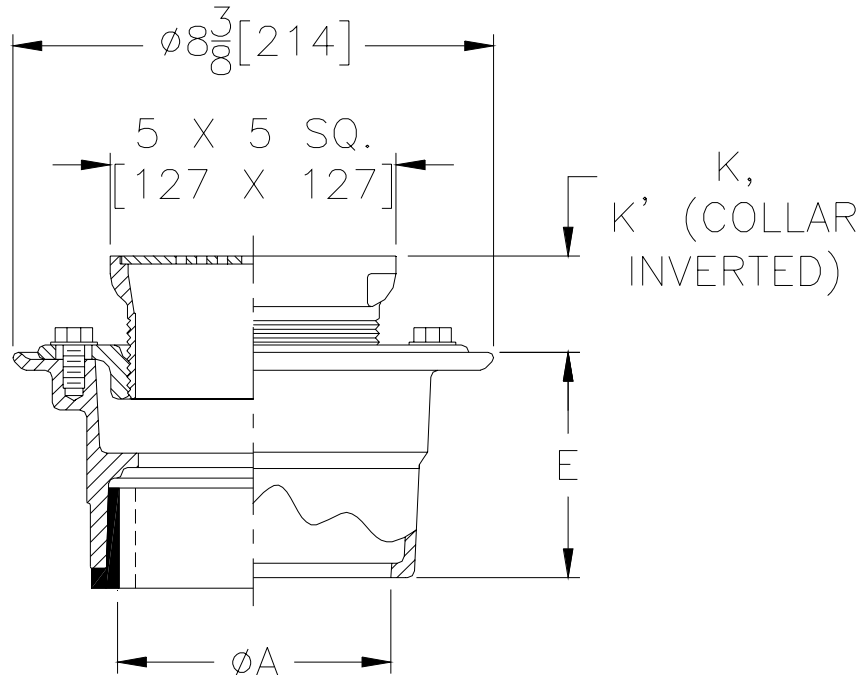
**ZN-415-Y**  
**BODY ASSEMBLY**  
**WITH "TYPE Y" STRAINER**

**SPECIFICATION SHEET**

TAG SD



Dimensional Data (inches and [mm]) are Subject to Manufacturing Tolerances and Change Without Notice



Str. Desig	Dimensions In Inches / [mm]						Approx. Wt. Lbs. / (kg)	Str Open Area Sq. In. / [sq cm]
	A Pipe Size	B X B' Size	K		K'			
			Min.	Max.	Min.	Max.		
-Y5	2-3-4-6 [51-76-102-152]	5 x 5 [127 x 127]	1-1/4 [32]	2-1/8 [54]	2 [51]	2-7/8 [73]	10 [5]	9 [58]
-Y6	2-3-4-6 [51-76-102-152]	6 x 6 [152 x 152]	1-1/4 [32]	2-1/8 [54]	2 [51]	2-7/8 [73]	10 [5]	12 [77]

**ENGINEERING SPECIFICATION:** ZURN ZN-415-Y Floor and Shower Drain, Dura-Coated cast iron body with bottom outlet, combination invertible membrane clamp and adjustable collar with "Type Y" polished nickel bronze square strainer with stainless steel screws.

**OPTIONS** (Check/specify appropriate options)

**PIPE SIZE**

2,3,4 [50,75,100]  
2,3,4 [50,75,100]  
2,3,4,6 [50,75,100,152]  
2,3,4 [50,75,100]  
2,3,4 [50,75,100]

(Specify size/type) **OUTLET**

\_\_\_ IC Inside Caulk  
\_\_\_ IG Inside Gasket  
\_\_\_ IP Threaded  
\_\_\_ NH No-Hub  
\_\_\_ NL Neo-Loc

**E BODY HT. DIM.**

3 7/8 [98]  
3 7/8 [98]  
2 5/8 [67]  
3 7/8 [98]  
4 5/8 [117]

**SUFFIXES**

\_\_\_ -AR Acid Resistant Epoxy Coated Cast Iron  
\_\_\_ -FS Floating Slab  
\_\_\_ -G Galvanized Cast Iron  
✓ \_\_\_ -P 1/2" [13mm] Trap Primer Connection  
\_\_\_ -U 1" [25mm] - 3" [76mm] High Extension Adapter  
\_\_\_ -VP Vandal-Proof Secured Top  
\_\_\_ -X Squeezin Backwater Valve  
\_\_\_ -Y Sediment Bucket

\_\_\_ -414 4" [102mm] Diameter Nickel Bronze Funnel  
\_\_\_ -6NH 6" [152mm] No-Hub Outlet (6IP w/Z-1040)  
\_\_\_ -90 2" [51mm], 3" [76mm] or 4" [102mm] Side  
Outlet Body Assembly (IP or NH only)

\*REGULARLY FURNISHED UNLESS OTHERWISE SPECIFIED

REV. A DATE: 06/16/05 C.N. NO. 89832

DWG. NO. 63658 PRODUCT NO. ZN-415-Y





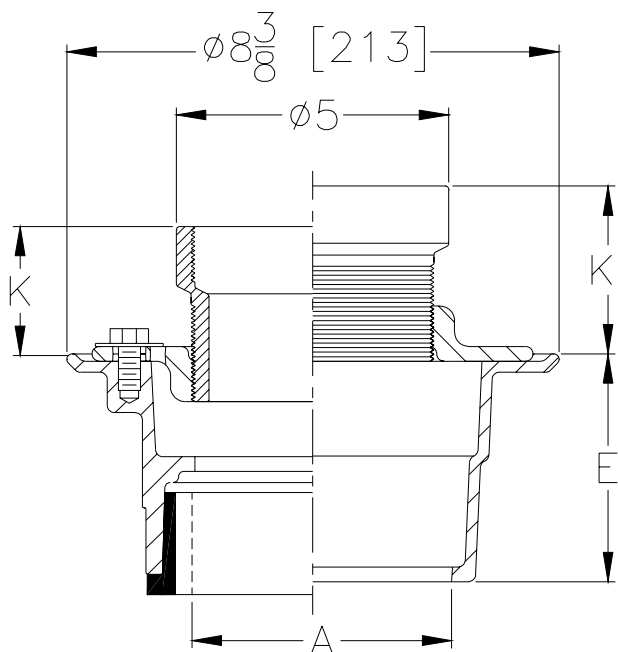
**Z-415-S**  
**BODY ASSEMBLY**  
**WITH "TYPE S" STRAINER**

**SPECIFICATION SHEET**

**TAG** HD



Dimensional Data (inches and [mm]) are Subject to Manufacturing Tolerances and Change Without Notice



Str. Desig.	Dimensions In Inches / [mm]						Approx. Wt. Lbs. / (kg)
	A Pipe Size	Str. Dia.	K		K'		
			Min.	Max.	Min.	Max.	
-S	2-3-4-6 [51-76-102-152]	5 [127]	1-3/8 [35]	2-1/2 [64]	2-1/4 [57]	3-3/8 [86]	10 [5]

**ENGINEERING SPECIFICATION:** ZURN Z(z)-415-S Hub Floor Drain, Dura-Coated cast iron body with bottom outlet, combination invertible membrane clamp and adjustable collar with "Type S" circular adjustable hub funnel (Specify Z or ZN) ✓

**OPTIONS** (Check/specify appropriate options)

**PIPE SIZE**

2,3,4 [50,75,100]  
2,3,4 [50,75,100]  
2,3,4,6 [50,75,100,152]  
2,3,4 [50,75,100]  
2,3,4 [50,75,100]

(Specify size/type) **OUTLET**

\_\_\_\_\_ IC Inside Caulk  
\_\_\_\_\_ IG Inside Gasket  
\_\_\_\_\_ IP Threaded  
\_\_\_\_\_ NH No-Hub  
\_\_\_\_\_ NL Neo-Loc

**E BODY HT. DIM.**

3 7/8 [98]  
3 7/8 [98]  
2 5/8 [67]  
3 7/8 [98]  
4 5/8 [117]

**SUFFIXES**

\_\_\_\_\_ -AR Acid Resistant Epoxy Coated Cast Iron  
\_\_\_\_\_ -FS Floating Slab  
\_\_\_\_\_ -G Galvanized Cast Iron  
✓ \_\_\_\_\_ -P 1/2" [13] Trap Primer Connection  
\_\_\_\_\_ -U 1" [25] - 3" [76] High Extension Adapter  
\_\_\_\_\_ -X Squeezin Backwater Valve  
\_\_\_\_\_ -Y Sediment Bucket  
\_\_\_\_\_ -6NH 6" [152] No-Hub Outlet (6IP w/Z-1040)  
\_\_\_\_\_ -90 2" [51], 3" [76] or 4" [102] Side  
Outlet Body Assembly (IP or NH only)

\*REGULARLY FURNISHED UNLESS OTHERWISE SPECIFIED

**REV.** **DATE: 11/15/99** **C.N. NO. 83369**

**DWG. NO. 63657** **PRODUCT NO. Z-415-S**





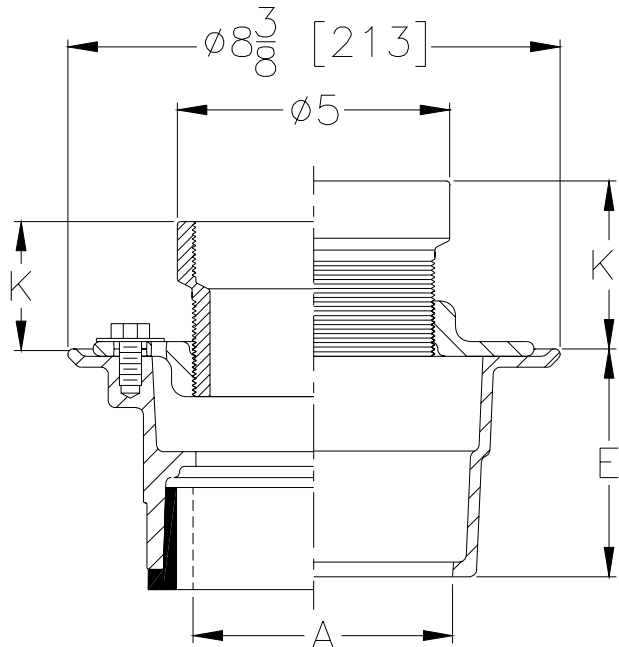
**Z-415-S**  
**BODY ASSEMBLY**  
**WITH "TYPE S" STRAINER**

**SPECIFICATION SHEET**

**TAG** HD



Dimensional Data (inches and [mm]) are Subject to Manufacturing Tolerances and Change Without Notice



Str. Desig.	Dimensions In Inches / [mm]						Approx Wt. Lbs. / (kg)
	A Pipe Size	Str. Dia.	K		K'		
			Min.	Max.	Min.	Max.	
-S	2-3-4-6 [51-76-102-152]	5 [127]	1-3/8 [35]	2-1/2 [64]	2-1/4 [57]	3-3/8 [86]	10 [5]

**ENGINEERING SPECIFICATION:** ZURN Z(z)-415-S Hub Floor Drain, Dura-Coated cast iron body with bottom outlet, combination invertible membrane clamp and adjustable collar with "Type S" circular adjustable hub funnel (Specify Z or ZN).

**OPTIONS** (Check/specify appropriate options)

**PIPE SIZE**

2,3,4 [50,75,100]  
2,3,4 [50,75,100]  
2,3,4,6 [50,75,100,152]  
2,3,4 [50,75,100]  
2,3,4 [50,75,100]

(Specify size/type) **OUTLET**

\_\_\_\_\_ IC Inside Caulk  
\_\_\_\_\_ IG Inside Gasket  
\_\_\_\_\_ IP Threaded  
\_\_\_\_\_ NH No-Hub  
\_\_\_\_\_ NL Neo-Loc

**E BODY HT. DIM.**

3 7/8 [98]  
3 7/8 [98]  
2 5/8 [67]  
3 7/8 [98]  
4 5/8 [117]

**SUFFIXES**

\_\_\_\_\_ -AR Acid Resistant Epoxy Coated Cast Iron  
\_\_\_\_\_ -FS Floating Slab  
\_\_\_\_\_ -G Galvanized Cast Iron  
☒ -P 1/2" [13] Trap Primer Connection  
\_\_\_\_\_ -U 1" [25] - 3" [76] High Extension Adapter  
\_\_\_\_\_ -X Squeezin Backwater Valve  
\_\_\_\_\_ -Y Sediment Bucket  
\_\_\_\_\_ -6NH 6" [152] No-Hub Outlet (6IP w/Z-1040)  
\_\_\_\_\_ -90 2" [51], 3" [76] or 4" [102] Side  
Outlet Body Assembly (IP or NH only)

\*REGULARLY FURNISHED UNLESS OTHERWISE SPECIFIED

**REV.** **DATE: 11/15/99** **C.N. NO. 83369**

**DWG. NO. 63657** **PRODUCT NO. Z-415-S**



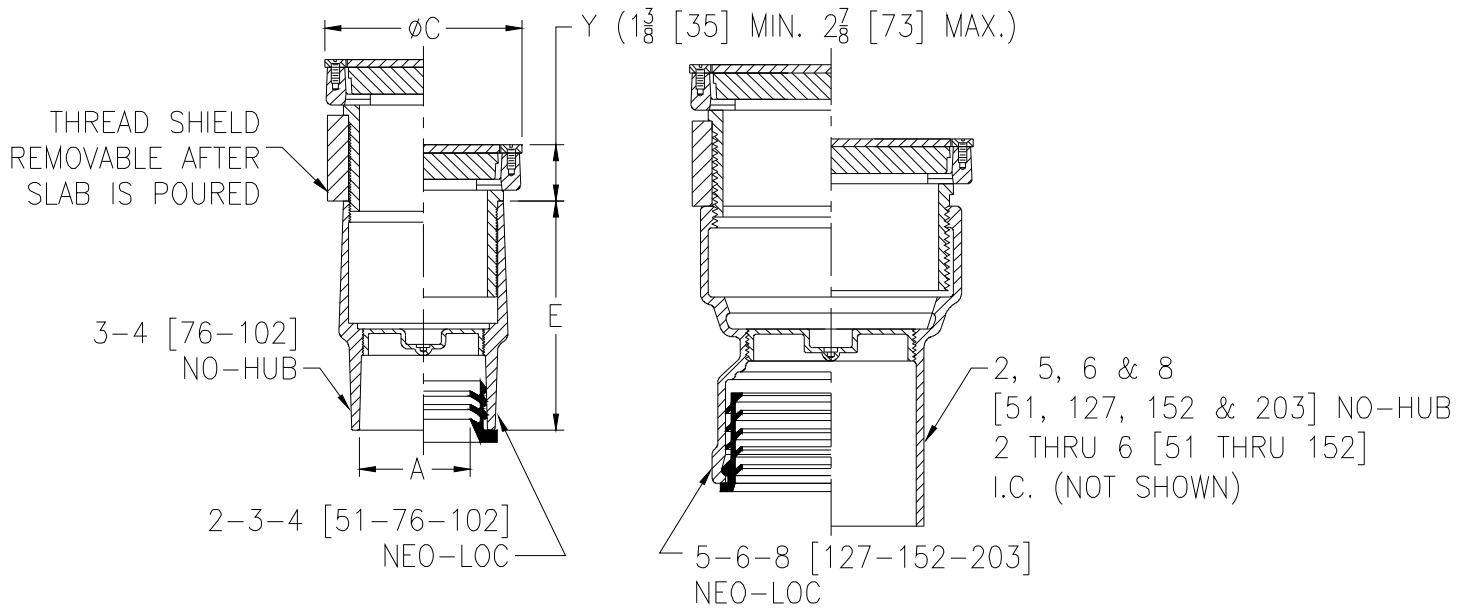
# ZN1400-HD

## "LEVEL-TROL" ADJUSTABLE FLOOR CLEANOUT W/ HEAVY-DUTY TOP

SPECIFICATION SHEET

TAG HD FCO

Dimensional Data (inches and [ mm ]) are Subject to Manufacturing Tolerances and Change Without Notice



Dimensions In Inches			Approx. Wt. Lbs. [kg]
A-Pipe Size	C	E	
Inside Caulk			
2 [51]	6 1/8 [156]	6 7/8 [175]	16.1 [7]
3 [76]	6 1/8 [156]	6 7/8 [175]	15.8 [7]
4 [102]	7 1/4 [184]	6 7/8 [175]	21.3 [10]
5 [127]	8 1/4 [210]	6 7/8 [175]	24.9 [11]
6 [152]	9 1/4 [235]	6 7/8 [175]	33.7 [15]
No-Hub			
2 [51]	4 1/8 [105]	4 5/8 [117]	8.2 [4]
3 [76]	4 1/8 [105]	4 3/4 [121]	9.3 [4]
4 [102]	5 1/8 [130]	4 3/4 [121]	12.9 [6]
5 [127]	7 1/4 [184]	7 1/2 [191]	21.3 [10]
6 [152]	8 1/4 [210]	4 3/4 [121]	26.6 [12]
8 [203]	9 1/4 [235]	7 1/2 [191]	36.1 [16]
Neo-Loc			
2 [51]	4 1/8 [105]	4 3/4 [121]	9.5 [4]
3 [76]	5 1/8 [130]	4 3/4 [121]	13.2 [6]
4 [102]	5 1/8 [130]	4 3/4 [121]	14.1 [6]
5 [127]	7 1/4 [184]	6 1/2 [165]	22 [10]
6 [152]	8 1/4 [210]	5 7/8 [149]	24 [11]
8 [203]	9 1/4 [235]	6 1/2 [165]	32 [15]

**ENGINEERING SPECIFICATION: ZURN ZN1400-HD**

"Level-Trol" Adjustable floor cleanout, Dura-Coated cast iron body, with gas and watertight ABS tapered thread plug, and round heavy-duty top adjustable to finished floor.

**OPTIONS** (Check/specify appropriate options)**PREFIXES**

- ☒ ZB D.C.C.I. with Polished Bronze Top  
☒ ZN D.C.C.I. with Polished Nickel Bronze Top\*

**SUFFIXES**

- \_\_\_ -AR Acid Resisting Epoxy Coated Finish  
\_\_\_ -BP Bronze Plug  
\_\_\_ -G Galvanized Cast Iron  
\_\_\_ -K Anchor Flange  
\_\_\_ -KC Anchor Flange with Clamp Collar  
\_\_\_ -SG Solid Gasketed Cover  
\_\_\_ -SM Special Marking Stamped on Top  
\_\_\_ -T Square Top  
\_\_\_ -TC Neo-Loc Test Cap Gasket  
(2-4 [51-102] NL Bottom Outlet Only)  
\_\_\_ -VP Vandal-Proof Screws

**PIPE SIZE**

2 thru 6 [51 thru 152]  
2 thru 6-8 [51 thru 152-203]  
2 thru 6-8 [51 thru 152-203]

**(Specify size/type) OUTLET**

- \_\_\_ IC Inside Caulk  
\_\_\_ NH No-Hub  
\_\_\_ NL Neo-Loc

**'E' BODY HT. DIM.**

See Chart  
See Chart  
See Chart

\*REGULARLY FURNISHED UNLESS OTHERWISE SPECIFIED

REV. A DATE: 6/7/10 C.N. NO. 111232

DWG. NO. 82442 PRODUCT NO. ZN1400-HD

ZURN INDUSTRIES, LLC. ♦ SPECIFICATION DRAINAGE OPERATION ♦ 1801 Pittsburgh Ave. ♦ Erie, PA 16514

Phone: 814/455-0921 ♦ Fax: 814/454-7929 ♦ World Wide Web: www.zurn.com

In Canada: ZURN INDUSTRIES LIMITED ♦ 3544 Nashua Drive ♦ Mississauga, Ontario L4V1L2 ♦ Phone: 905/405-8272 Fax: 905/405-1292



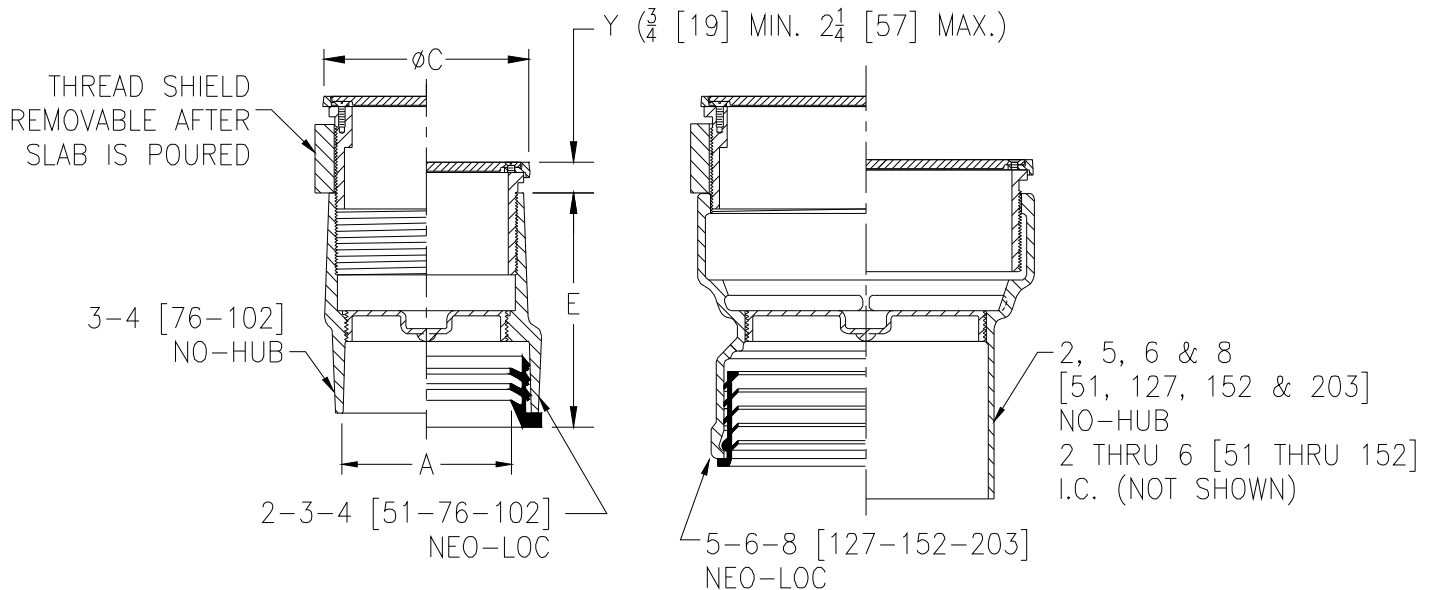
# ZN1400

## LIGHT-DUTY ADJUSTABLE FLOOR CLEANOUT

SPECIFICATION SHEET

TAG LIGHT DUTY FCO

Dimensional Data (inches and [ mm ]) are Subject to Manufacturing Tolerances and Change Without Notice



Dimensions In Inches			Approx. Wt. Lbs. [kg]
A-Pipe Size	C	E	
Inside Caulk			
2 [51]	6 1/8 [156]	6 7/8 [175]	10.9 [5]
3 [76]	6 1/8 [156]	6 7/8 [175]	10.6 [5]
4 [102]	7 1/4 [184]	6 7/8 [175]	14.1 [6]
5 [127]	8 1/4 [210]	6 7/8 [175]	16.5 [7]
6 [152]	9 1/4 [235]	6 7/8 [175]	24.4 [11]
No-Hub			
2 [51]	4 1/8 [105]	4 5/8 [117]	5.8 [3]
3 [76]	4 1/8 [105]	4 3/4 [121]	6.9 [3]
4 [102]	5 1/8 [130]	4 3/4 [121]	9.3 [4]
5 [127]	7 1/4 [184]	7 1/2 [191]	12.1 [6]
6 [152]	8 1/4 [210]	4 3/4 [121]	18.1 [8]
8 [203]	9 1/4 [235]	7 1/2 [191]	26.8 [12]
Neo-Loc			
2 [51]	4 1/8 [105]	4 3/4 [121]	7 [3]
3 [76]	5 1/8 [130]	4 3/4 [121]	9.6 [4]
4 [102]	5 1/8 [130]	4 3/4 [121]	10.5 [5]
5 [127]	7 1/4 [184]	6 1/2 [165]	15.2 [7]
6 [152]	8 1/4 [210]	5 7/8 [149]	15.5 [7]
8 [203]	9 1/4 [235]	6 1/2 [165]	23 [10]

**ENGINEERING SPECIFICATION: ZURN ZN1400**

"Level-Trol" Adjustable floor cleanout, Dura-Coated cast iron body, with gas and watertight ABS tapered thread plug, and round scoriated secured light-duty polished nickel bronze top, adjustable to finished floor.

**OPTIONS** (Check/specify appropriate options)**PREFIXES**

- ☒ ZB D.C.C.I. with Polished Bronze Top  
☒ ZN D.C.C.I. with Polished Nickel Bronze Top\*

**SUFFIXES**

- \_\_\_ -AR Acid Resisting Epoxy Coated Finish  
\_\_\_ -BP Bronze Plug  
\_\_\_ -CF Carpet Flange Cover  
\_\_\_ -CM Carpet Marker  
\_\_\_ -DX Round ZB or ZN Top with Dex-o-tex Flange  
(2 thru 4 [51 thru 102] Sizes Only)  
\_\_\_ -G Galvanized Cast Iron  
\_\_\_ -K Anchor Flange  
\_\_\_ -KC Anchor Flange with Clamp Collar  
\_\_\_ -TX Square Top recessed for 1/8 [3] tile  
\_\_\_ -SG Solid Gasketed Cover  
\_\_\_ -T Square Top  
\_\_\_ -TX Square Top Recessed for 1/8 [3] Tile  
(Available in 2 - 6 [51-129] Tops Only)  
\_\_\_ -VP Vandal-Proof Screws  
\_\_\_ -X Round Top Recessed for 1/8 [3] Tile

**PIPE SIZE**

2 thru 6 [51 thru 152]  
2 thru 6, 8 [51 thru 152, 203]  
2 thru 6, 8 [51 thru 152, 203]

(Specify size/type) **OUTLET**

- \_\_\_ IC Inside Caulk  
\_\_\_ NH No-Hub  
\_\_\_ NL Neo-Loc

**'E' BODY HT. DIM.**

See Chart  
See Chart  
See Chart

REV. D DATE: 6/7/10 C.N. NO. 111230

DWG. NO. 62103 PRODUCT NO. ZN1400

ZURN INDUSTRIES, LLC. ♦ SPECIFICATION DRAINAGE OPERATION ♦ 1801 Pittsburgh Ave. ♦ Erie, PA 16514

Phone: 814/455-0921 ♦ Fax: 814/454-7929 ♦ World Wide Web: www.zurn.com

In Canada: ZURN INDUSTRIES LIMITED ♦ 3544 Nashua Drive ♦ Mississauga, Ontario L4V1L2 ♦ Phone: 905/405-8272 Fax: 905/405-1292



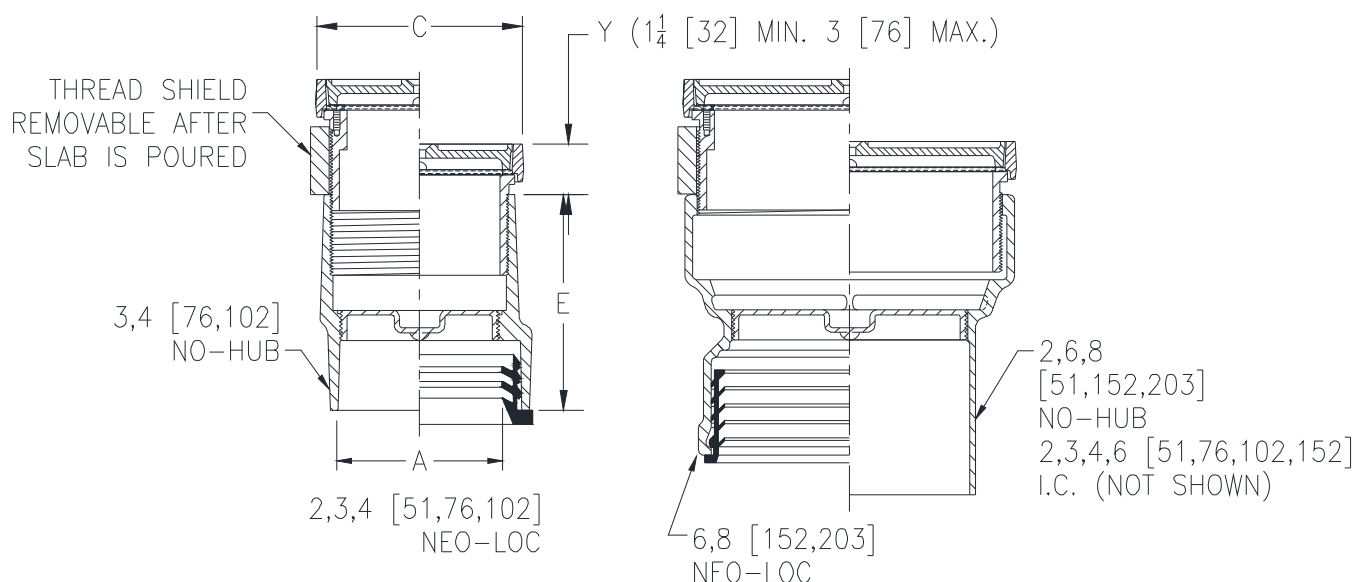
# ZN1400-X

## LIGHT-DUTY ADJUSTABLE FLOOR CLEANOUT W/ RECESSED COVER FOR 1/8 [3] TILE

### SPECIFICATION SHEET

TAG RECESSED FOR TILE

Dimensional Data (inches and [ mm ]) are Subject to Manufacturing Tolerances and Change Without Notice



Dimensions In Inches [mm]			Approx. Wt. Lbs. [kg]
A-Pipe Size	C	E	
Inside Caulk			
2 [51]	6-1/8 [156]	6-7/8 [175]	6 [3]
3 [76]	6-1/8 [156]	6-7/8 [175]	8 [4]
4 [102]	7-1/4 [184]	6-7/8 [175]	9 [4]
6 [152]	9-1/4 [235]	6-7/8 [175]	15 [7]
No-Hub			
2 [51]	4-1/8 [105]	4-5/8 [117]	6 [3]
3 [76]	4-1/8 [105]	4-3/4 [121]	8 [4]
4 [102]	5-1/8 [130]	4-3/4 [121]	9 [4]
6 [152]	8-1/4 [210]	4-3/4 [121]	15 [7]
8 [203]	9-1/4 [235]	7-1/2 [191]	21 [10]
Neo-Loc			
2 [51]	4-1/8 [105]	4-3/4 [121]	6 [3]
3 [76]	5-1/8 [130]	4-3/4 [121]	8 [4]
4 [102]	5-1/8 [130]	4-3/4 [121]	9 [4]
6 [152]	8-1/4 [210]	5-7/8 [149]	15 [7]
8 [203]	9-1/4 [235]	6-1/2 [165]	21 [10]

### ENGINEERING SPECIFICATION: ZURN ZN1400-X

"Level-Trol" Adjustable floor cleanout, Dura-Coated cast iron body, with gas and watertight ABS tapered thread plug, and round scoriated secured light-duty polished nickel bronze top recessed for 1/8" [3mm] tile, adjustable to finished floor.

### OPTIONS (Check/specify appropriate options)

#### PREFIXES

- ☒ ZB D.C.C.I. with Polished Bronze Top  
☒ ZN D.C.C.I. with Polished Nickel Bronze Top\*

#### SUFFIXES

- \_\_\_ -AR Acid Resisting Epoxy Coated Finish  
 \_\_\_ -BP Bronze Plug  
 \_\_\_ -G Galvanized Cast Iron  
 \_\_\_ -K Anchor Flange  
 \_\_\_ -KC Anchor Flange with Clamp Collar  
 \_\_\_ -VP Vandal-Proof Screws

### PIPE SIZE

2,3,4,6 [51,76,102,152]  
 2,3,4,6,8 [51,76,102,152,203]  
 2,3,4,6,8 [51,76,102,152,203]

### (Specify size/type) OUTLET

- \_\_\_ IC Inside Caulk  
 \_\_\_ NH No-Hub  
 \_\_\_ NL Neo-Loc

### 'E' BODY HT. DIM.

See Chart  
 See Chart  
 See Chart

\* Regularly furnished unless otherwise specified.



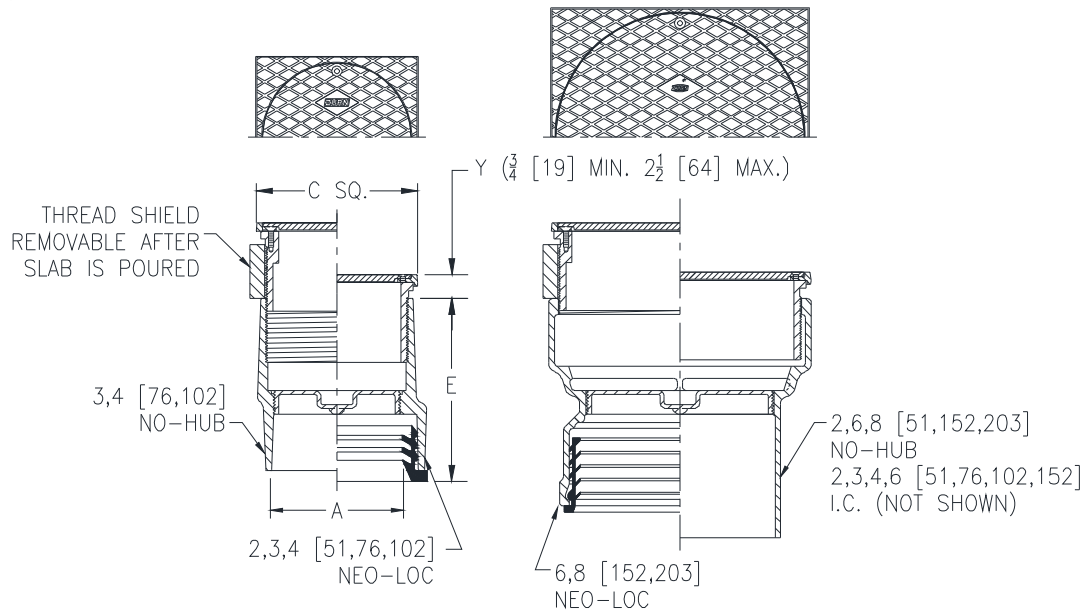
# ZN1400-T

## "LEVEL-TROL" ADJUSTABLE FLOOR CLEANOUT W/ SQUARE TOP

### SPECIFICATION SHEET

TAG TILED AREA

Dimensional Data (inches and [ mm ]) are Subject to Manufacturing Tolerances and Change Without Notice



Dimensions In Inches [mm]			Approx. Wt. Lbs. [kg]
A-Pipe Size	C	E	
Inside Caulk			
2 [51]	6-1/8 [156]	6-7/8 [175]	6 [3]
3 [76]	6-1/8 [156]	6-7/8 [175]	8 [4]
4 [102]	7-1/4 [184]	6-7/8 [175]	9 [4]
6 [152]	9-1/4 [235]	6-7/8 [175]	15 [7]
No-Hub			
2 [51]	4-1/8 [105]	4-5/8 [117]	6 [3]
3 [76]	4-1/8 [105]	4-3/4 [121]	8 [4]
4 [102]	5-1/8 [130]	4-3/4 [121]	9 [4]
6 [152]	8-1/4 [210]	4-3/4 [121]	15 [7]
8 [203]	9-1/4 [235]	7-1/2 [191]	21 [10]
Neo-Loc			
2 [51]	4-1/8 [105]	4-3/4 [121]	6 [3]
3 [76]	5-1/8 [130]	4-3/4 [121]	8 [4]
4 [102]	5-1/8 [130]	4-3/4 [121]	9 [4]
6 [152]	8-1/4 [210]	6-1/2 [165]	15 [7]
8 [203]	9-1/4 [235]	6-1/2 [165]	21 [10]

### ENGINEERING SPECIFICATION: ZURN ZN1400-T

"Level-Trol" Adjustable floor cleanout, Dura-Coated cast iron body, with gas and watertight ABS tapered thread plug, and square scoriated secured light-duty polished nickel bronze top, adjustable to finished floor.

### OPTIONS (Check/specify appropriate options)

#### PREFIXES

- ☒ ZB D.C.C.I. with Polished Bronze Top  
☒ ZN D.C.C.I. with Polished Nickel Bronze Top\*

#### SUFFIXES

- ☐ -AR Acid Resisting Epoxy Coated Finish  
☐ -BP Bronze Plug  
☐ -CF Carpet Flange Cover  
☐ -CM Carpet Marker  
☐ -DC Duresist Cover (Only When -HD is Specified)  
☐ -G Galvanized Cast Iron  
☐ -HD Extra Heavy-Duty Veneer Top - Add 3/4 [19] to 'Y' Dim.  
☐ -K Anchor Flange  
☐ -KC Anchor Flange with Clamp Collar  
☐ -SG Solid Gasketed Cover  
☐ -SM Special Marking Stamped on Top  
☐ -TC Neo-Loc Test Cap Gasket  
(2,3,4 [51,76,102] NL Bottom Outlet Only)  
☐ -VP Vandal-Proof Screws

### PIPE SIZE

2,3,4,6 [51,76,102,152]  
2,3,4,6,8 [51,76,102,152,203]  
2,3,4,6,8 [51,76,102,152,203]

### (Specify size/type) OUTLET

☐ IC Inside Caulk  
☐ NH No-Hub  
☐ NL Neo-Loc

### 'E' BODY HT. DIM.

See Chart  
See Chart  
See Chart

\* Regularly furnished unless otherwise specified.



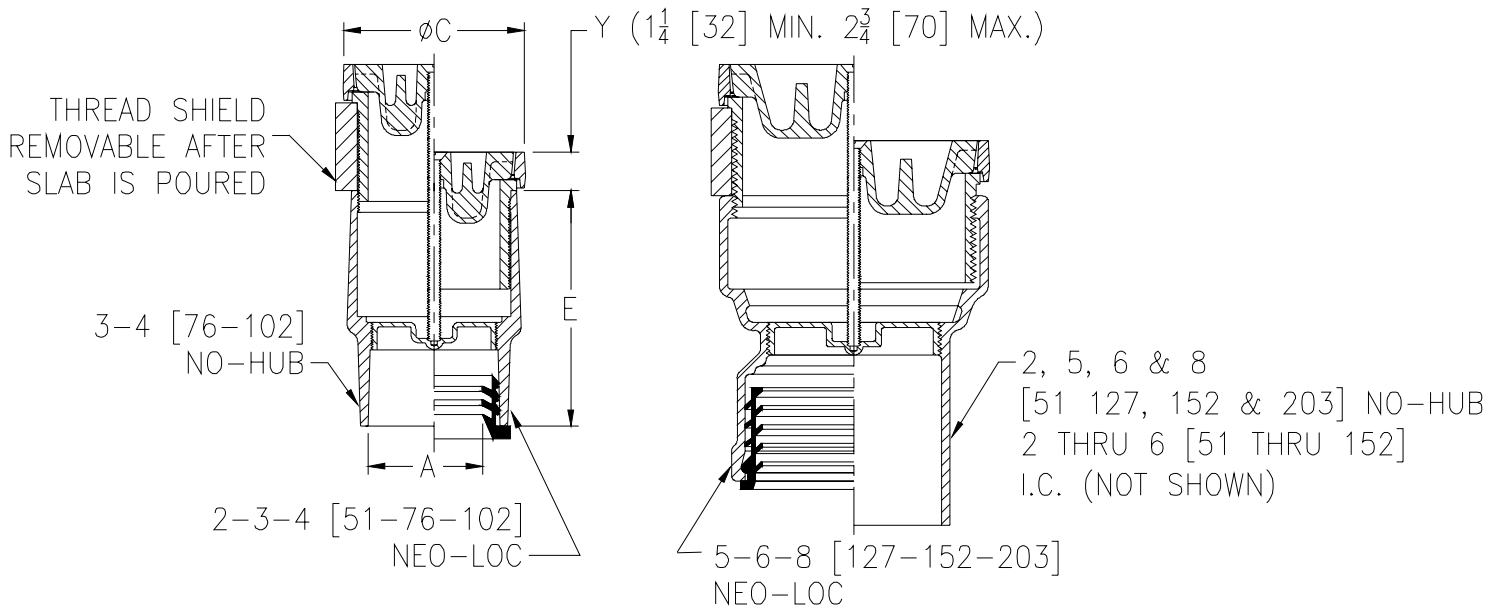
# ZN1400-Z

## "LEVEL-TROL" ADJUSTABLE CLEANOUT W/ TOP RECESSED FOR TERRAZZO

SPECIFICATION SHEET

TAG TERRAZZO AREA

Dimensional Data (inches and [ mm ]) are Subject to Manufacturing Tolerances and Change Without Notice



Dimensions In Inches			Approx. Wt. Lbs. [kg]
A-Pipe Size	C	E	
Inside Caulk			
2 [51]	6 1/8 [156]	6 7/8 [175]	6 [3]
3 [76]	6 1/8 [156]	6 7/8 [175]	8 [4]
4 [102]	7 1/4 [184]	6 7/8 [175]	9 [4]
5 [127]	8 1/4 [210]	6 7/8 [175]	12 [5]
6 [152]	9 1/4 [235]	6 7/8 [175]	15 [7]
No-Hub			
2 [51]	4 1/8 [105]	7 1/2 [191]	6 [3]
3 [76]	4 1/8 [105]	5 3/8 [137]	8 [4]
4 [102]	5 1/8 [130]	5 3/8 [137]	9 [4]
5 [127]	7 1/4 [184]	7 1/2 [191]	12 [5]
6 [152]	8 1/4 [210]	7 1/2 [191]	15 [7]
8 [203]	9 1/4 [235]	7 1/2 [191]	21 [10]
Neo-Loc			
2 [51]	4 1/8 [105]	5 3/8 [137]	6 [3]
3 [76]	5 1/8 [130]	5 3/8 [137]	8 [4]
4 [102]	5 1/8 [130]	5 3/8 [137]	9 [4]
5 [127]	7 1/4 [184]	6 1/2 [165]	12 [5]
6 [152]	8 1/4 [210]	6 1/2 [165]	15 [7]
8 [203]	9 1/4 [235]	6 1/2 [165]	21 [10]

**ENGINEERING SPECIFICATION: ZURN ZN1400-Z**

"Level-Trol" Adjustable floor cleanout, Dura-Coated cast iron body, with gas and watertight ABS tapered thread plug, and round top recessed for 1 1/4 [32] terazzo adjustable to finished floor.

**OPTIONS** (Check/specify appropriate options)**PREFIXES**

- ☒ ZB D.C.C.I. with Polished Bronze Top  
☒ ZN D.C.C.I. with Polished Nickel Bronze Top\*

**SUFFIXES**

- ☐ -AR Acid Resisting Epoxy Coated Finish  
☐ -BP Bronze Plug  
☐ -G Galvanized Cast Iron  
☐ -K Anchor Flange  
☐ -KC Anchor Flange with Clamp Collar  
☐ -SG Solid Gasketed Cover  
☐ -VP Vandal-Proof Screws

**PIPE SIZE**

2 thru 6 [51 thru 152]  
2 thru 6-8 [51 thru 152-203]  
2 thru 6-8 [51 thru 152-203]

**(Specify size/type) OUTLET**

- ☐ IC Inside Caulk  
☐ NH No-Hub  
☐ NL Neo-Loc

**'E' BODY HT. DIM.**

See Chart  
See Chart  
See Chart

\*REGULARLY FURNISHED UNLESS OTHERWISE SPECIFIED

REV. DATE: 7/27/05 C.N. NO. 93645

DWG. NO. 82440 PRODUCT NO. ZN1400-Z

ZURN INDUSTRIES, INC. ♦ SPECIFICATION DRAINAGE OPERATION ♦ 1801 Pittsburgh Ave. ♦ Erie, PA 16514

Phone: 814/455-0921 ♦ Fax: 814/454-7929 ♦ World Wide Web: www.zurn.com

In Canada: ZURN INDUSTRIES LIMITED ♦ 3544 Nashua Drive ♦ Mississauga, Ontario L4V1L2 ♦ Phone: 905/405-8272 Fax: 905/405-1292





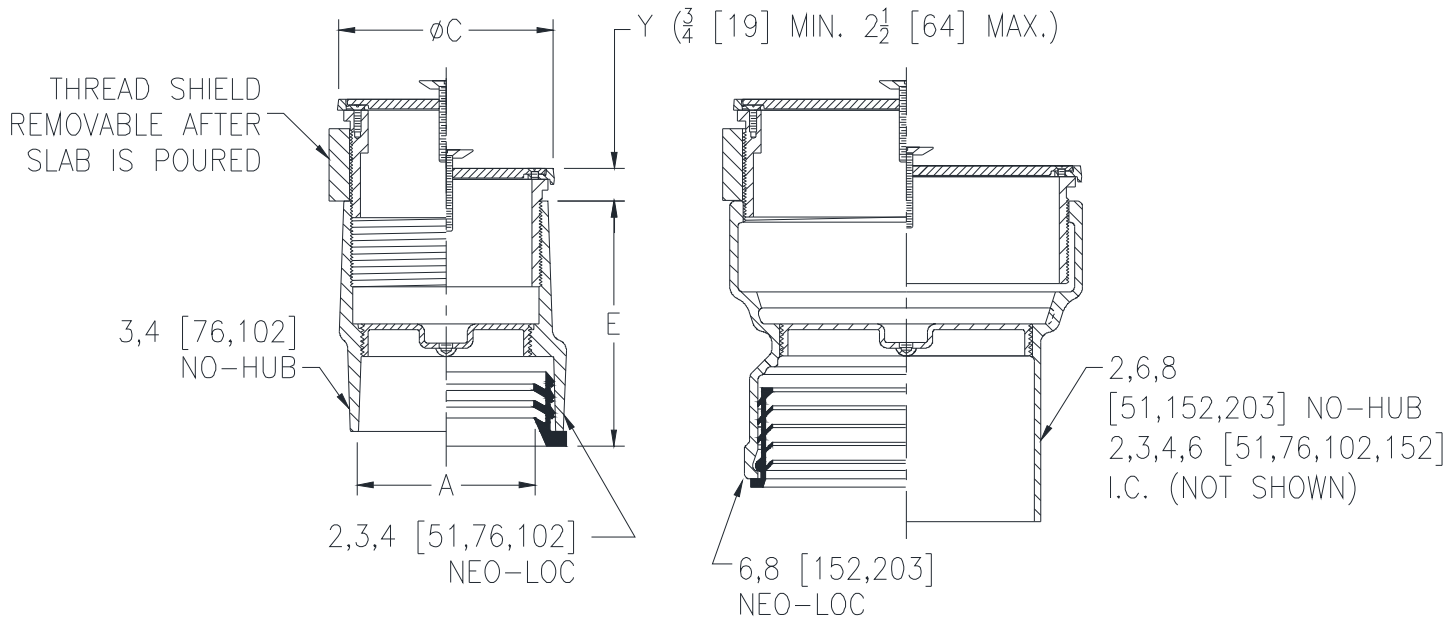
# ZN1400-CM

## "LEVEL-TROL" ADJUSTABLE FLOOR CLEANOUT W/ CARPET MARKER

### SPECIFICATION SHEET

TAG CARPET AREA

Dimensional Data (inches and [ mm ]) are Subject to Manufacturing Tolerances and Change Without Notice



Dimensions In Inches [mm]			Approx. Wt. Lbs. [kg]
A-Pipe Size	C	E	
Inside Caulk			
2 [51]	6-1/8 [156]	6-7/8 [175]	6 [3]
3 [76]	6-1/8 [156]	6-7/8 [175]	8 [4]
4 [102]	7-1/4 [184]	6-7/8 [175]	9 [4]
6 [152]	9-1/4 [235]	6-7/8 [175]	15 [7]
No-Hub			
2 [51]	4-1/8 [105]	4-5/8 [117]	6 [3]
3 [76]	4-1/8 [105]	4-3/4 [121]	8 [4]
4 [102]	5-1/8 [130]	4-3/4 [121]	9 [4]
6 [152]	8-1/4 [210]	4-3/4 [121]	15 [7]
8 [203]	9-1/4 [235]	7-1/2 [191]	21 [10]
Neo-Loc			
2 [51]	4-1/8 [105]	4-3/4 [121]	6 [3]
3 [76]	5-1/8 [130]	4-3/4 [121]	8 [4]
4 [102]	5-1/8 [130]	4-3/4 [121]	9 [4]
6 [152]	8-1/4 [210]	5-7/8 [149]	15 [7]
8 [203]	9-1/4 [235]	6-1/2 [165]	21 [10]

### ENGINEERING SPECIFICATION: ZURN ZN1400-CM

"Level-Trol" Adjustable floor cleanout, Dura-Coated cast iron body, with gas and watertight ABS tapered thread plug, and round scoriated secured light-duty polished nickel bronze top with carpet marker adjustable to finished floor.

### OPTIONS (Check/specify appropriate options)

#### PREFIXES

- ☐ Z Dura Coated Cast Iron (Add 3/4 [19] to 'Y' Dim.)
- ☐ ZB D.C.C.I. w/ Polished Bronze Top
- ☒ ZN D.C.C.I. w/ Polished Nickel Bronze Top\*
- ☐ ZS D.C.C.I. w/ Polished Stainless Steel Top

#### SUFFIXES

- ☐ -AR Acid Resisting Epoxy Coated Finish
- ☐ -BP Bronze Plug
- ☐ -DX Round ZB or ZN Top with Dex-O-Tex Flange (2,3,4 [51,76,102] Sizes Only)
- ☐ -G Galvanized Cast Iron
- ☐ -K Anchor Flange
- ☐ -KC Anchor Flange with Clamp Collar
- ☐ -T Square Top
- ☐ -TC Neo-Loc Test Cap Gasket (2,3,4 [51,76,102] NL Bottom Outlet Only)
- ☐ -VP Vandal-Proof Screws

### PIPE SIZE

2,3,4,6 [51,76,102,152]  
2,3,4,6,8 [51,76,102,152,203]  
2,3,4,6,8 [51,76,102,152,203]

### (Specify size/type) OUTLET

☐ IC Inside Caulk  
☐ NH No-Hub  
☐ NL Neo-Loc

### 'E' BODY HT. DIM.

See Chart  
See Chart  
See Chart

\* Regularly furnished unless otherwise specified.



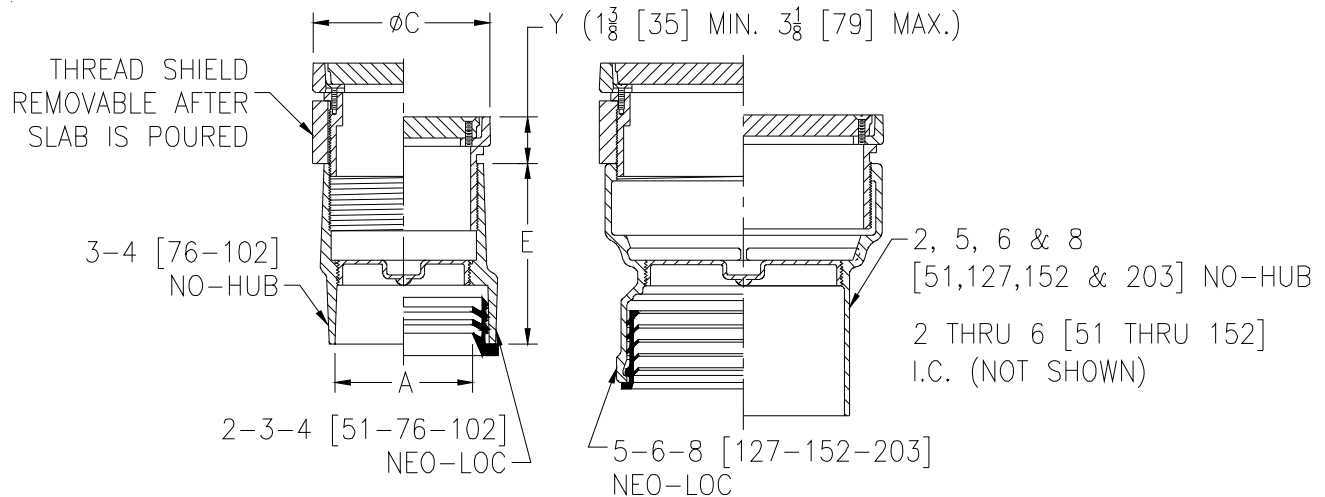
# Z1400

## EXTRA-HEAVY-DUTY "LEVEL-TROL" ADJUSTABLE FLOOR CLEANOUT

### SPECIFICATION SHEET

TAG UNFIN AREA

Dimensional Data (inches and [ mm ]) are Subject to Manufacturing Tolerances and Change Without Notice



#### ENGINEERING SPECIFICATION: ZURN Z1400

"Level-Trol" Adjustable floor cleanout, Dura-Coated cast iron body with gas and watertight ABS tapered thread plug and round scoriated cast iron extra-heavy-duty secured top (Specify finish Z, ZB, ZN, ZS) adjustable to finished floor.

Dimension In Inches			Approx. Wt. Lbs. [kg.]
A-Pipe Size	C	E	
Inside Caulk			
2 [51]	6-1/8 [156]	6-7/8 [175]	13.8 [6.3]
3 [76]	6-1/8 [156]	6-7/8 [175]	14 [6.4]
4 [102]	7-1/4 [184]	6-7/8 [175]	18.3 [8.3]
5 [127]	8-1/4 [210]	6-7/8 [175]	22.6 [10.3]
6 [152]	9-1/4 [235]	6-7/8 [175]	32.2 [14.6]
No-Hub			
2 [51]	4-1/8 [105]	4-5/8 [117]	7 [3]
3 [76]	4-1/8 [105]	4-3/4 [121]	7.7 [3.5]
4 [102]	5-1/8 [130]	4-3/4 [121]	10.3 [4.7]
5 [127]	7-1/4 [184]	7-1/2 [191]	17.6 [8]
6 [152]	8-1/4 [210]	4-3/4 [121]	22.2 [10.1]
8 [203]	9-1/4 [235]	7-1/2 [191]	29.9 [13.6]
Neo-Loc			
2 [51]	4-1/8 [105]	4-3/4 [121]	7.9 [3.6]
3 [76]	5-1/8 [130]	4-3/4 [121]	10.6 [4.8]
4 [102]	5-1/8 [130]	4-3/4 [121]	11.9 [5.4]
5 [127]	7-1/4 [184]	6-1/2 [165]	18.7 [8.5]
6 [152]	8-1/4 [210]	5-7/8 [149]	21.9 [9.9]
8 [203]	9-1/4 [235]	6-1/2 [165]	23.5 [10.7]

#### OPTIONS (Check/specify appropriate options)

##### PREFIXES

- ☒ Z Dura Coated Cast Iron\*
- ☐ ZB D.C.C.I. w/ Polished Bronze Light-Duty Top (Deduct 1/2 [13] from 'Y' Dim.)
- ☐ ZN D.C.C.I. w/ Polished Nickel Bronze Light-Duty Top (Deduct 1/2 [13] from 'Y' Dim.)
- ☐ ZS D.C.C.I. w/ Polished Stainless Steel Extra-Heavy-Duty Top (Add 3/16 [5] to 'Y' Dim.)

##### SUFFIXES

- ☐ -AR Acid Resisting Epoxy Coated Finish
- ☐ -BP Bronze Plug
- ☐ -CF Carpet Flange Cover (ZB and ZN only)
- ☐ -CM Carpet Marker
- ☐ -DC Duresist Cover
- ☐ -DX Round ZB or ZN Top with Dex-o-tex Flange (2 thru 4 [51 thru 102] Sizes only)
- ☐ -G Galvanized Cast Iron
- ☐ -HD Extra-Heavy-Duty Veneer Top (Add 1/8 [3] to 'Y' Dim.) (ZB and ZN only)
- ☐ -K Anchor Flange
- ☐ -KC Anchor Flange w/ Clamping Collar
- ☐ -PC Protective Cover
- ☐ -SG Solid Gasketed Cover
- ☐ -SM Special Marking Stamped on Top
- ☐ -T Square Top
- ☐ -TC Neo-Loc Test Cap Gasket (2-4 [51-102] NL Bottom Outlet Only)
- ☐ -TX Square Top Recessed for 1/8 [3] Tile (ZB and ZN only)
- ☐ -VP Vandal-Proof Screws
- ☐ -X Round Top Recessed for 1/8 [3] Tile (ZB or ZN only)
- ☐ -Z Round Top Recessed for 1-1/4 [32] Terrazzo (ZB or ZN only)

#### PIPE SIZE

2-3-4-5-6 [51-76-102-127-152]  
2-3-4-5-6-8 [51-76-102-127-152-203]  
2-3-4-5-6-8 [51-76-102-127-152-203]

#### (Specify size/type) OUTLET

☐ IC Inside Caulk  
☐ NH No-Hub  
☐ NL Neo-Loc

#### 'E' BODY HT. DIM.

See Chart  
See Chart  
See Chart

\* Regularly furnished unless otherwise specified.

Zurn Industries, LLC | Specification Drainage Operation  
1801 Pittsburgh Avenue, Erie, PA U.S.A. 16502 · Ph. 855-663-9876, Fax 814-454-7929

In Canada | Zurn Industries Limited  
3544 Nashua Drive, Mississauga, Ontario L4V 1L2 · Ph. 905-405-8272, Fax 905-405-1292

[www.zurn.com](http://www.zurn.com)

Rev. Q  
Date: 06/04/14  
C.N. No. 131071  
Prod. | Dwg. No. Z1400





# Z1350

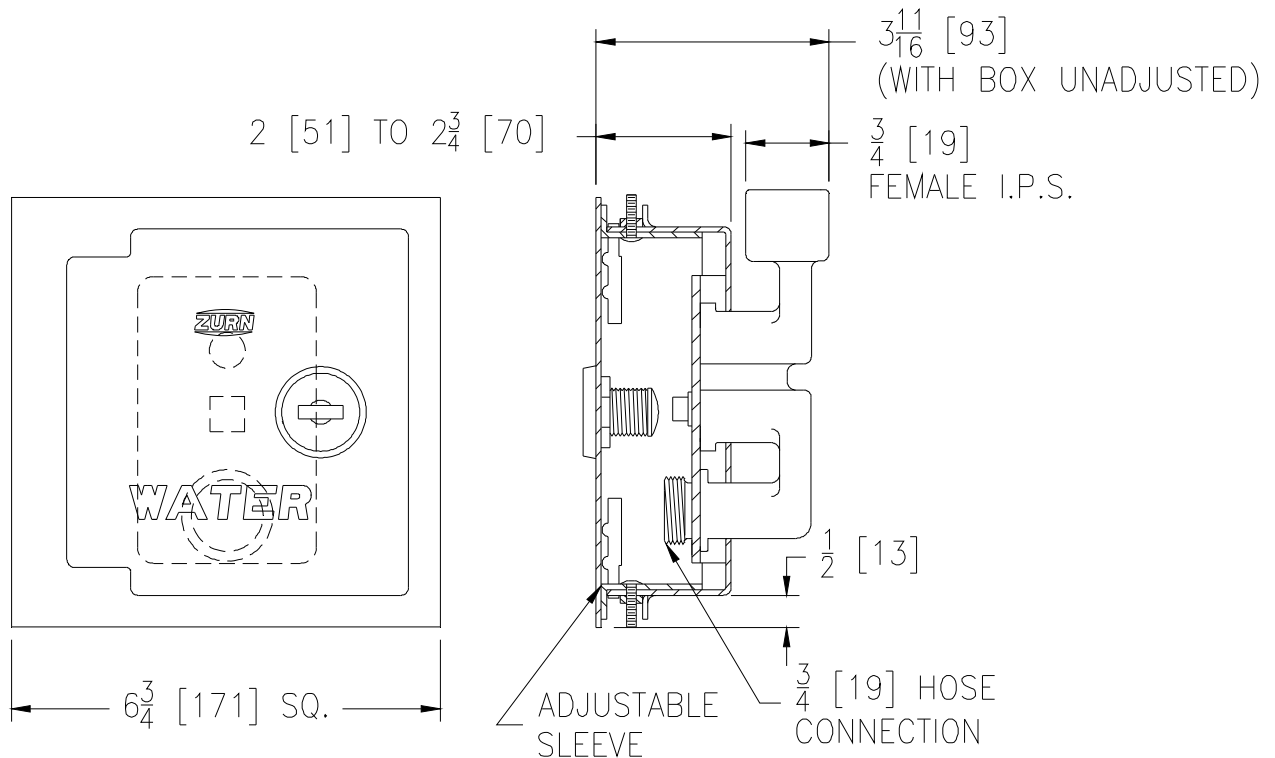
## NARROW WALL HYDRANT

### Encased, Moderate Climate

SPECIFICATION SHEET

TAG NFHB

Dimensional Data (inches and [ mm ]) are Subject to Manufacturing Tolerances and Change Without Notice



Wall Thickness Inches	Approx. Wt. Lbs. [kg]
4 [102]	4 [2]

**ENGINEERING SPECIFICATION:** ZURN Z1350 Encased moderate climate wall hydrant for narrow wall installation. Complete with bronze body, all bronze interior parts, replaceable seat washer, screwdriver operated stop valve in supply, key operated control valve, and 3/4 [19] IP female inlet and 3/4 [19] male hose connection standard. Adjustable stainless steel box furnished with hinged cover, cylinder lock and "WATER" stamped on cover.

**OPTIONS** (Check/specify appropriate options)

#### SUFFIXES

___ -RK	Hydrant Parts Repair Kit
___ -VB	3/4 [19] Adapter Vacuum Breaker
___ -34EL	3/4 [19] IP 90° Inlet Elbow Adapter
___ -34FS	3/4 [19] Solder Female Inlet Adapter

**\*\*NOTE:** The adjustable sleeve on the stainless steel box is provided with a gasket as standard, but additional caulking of all inside joints is required (by others) after the hydrant box has been properly set. Caulking should be performed on all open seams, including the seams where the gasket is present.

REV. J DATE: 10/22/10 C.N. NO. 111945

DWG. NO. 58877 PRODUCT NO. Z1350

ZURN INDUSTRIES, LLC. ♦ SPECIFICATION DRAINAGE OPERATION ♦ 1801 Pittsburgh Ave. ♦ Erie, PA 16514

Phone: 814/455-0921 ♦ Fax: 814/454-7929 ♦ World Wide Web: [www.zurn.com](http://www.zurn.com)

In Canada: ZURN INDUSTRIES LIMITED ♦ 3544 Nashua Drive ♦ Mississauga, Ontario L4V1L2 ♦ Phone: 905/405-8272 Fax: 905/405-1292



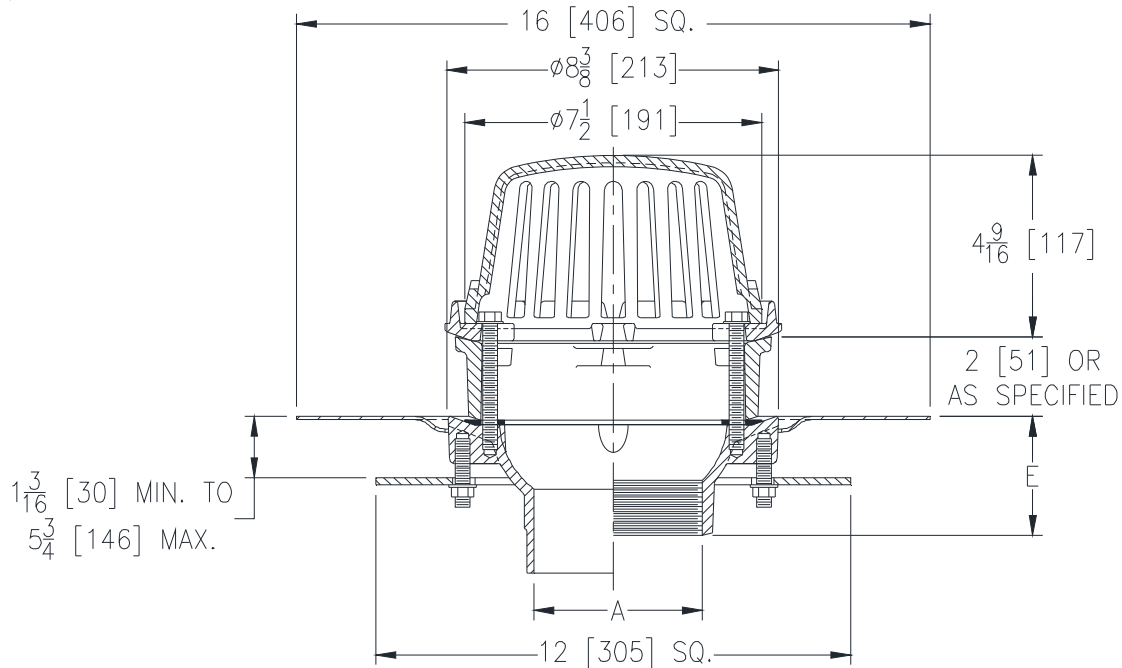
# Z125-C-E-R

8-3/8 [213] DIAMETER ROOF DRAIN W/ UNDERDECK CLAMP, STATIC EXTENSION & ROOF SUMP RECEIVER

SPECIFICATION SHEET

TAG RD

Dimensional Data (inches and [ mm ]) are Subject to Manufacturing Tolerances and Change Without Notice



A Pipe Size In. [mm]	Approx. Wt. Lbs. [kg]	Dome Open Area Sq. In. [cm <sup>2</sup> ]
2,3,4 [51,76,102]	18 [8]	43 [277]

**ENGINEERING SPECIFICATION: ZURN Z125-C-E-R**  
8-3/8" [213mm] Diameter roof drain, Dura-Coated cast iron body with combination membrane flashing clamp/gravel guard, static extension low silhouette Poly-Dome, roof sump receiver and underdeck clamp.

## OPTIONS (Check/specify appropriate options)

### PIPE SIZE

2,3,4 [51,76,102]  
2 [51]  
3 [76]  
4 [102]  
2,3,4 [51,76,102]  
2,3,4 [51,76,102]

### (Specify size/type) OUTLET

\_\_\_ IC Inside Caulk  
\_\_\_ IP Threaded  
\_\_\_ IP Threaded  
\_\_\_ IP Threaded  
\_\_\_ NH No-Hub  
\_\_\_ NL Neo-Loc

### 'E' BODY HT. DIM.

3-7/8 [98]  
2-7/16 [62]  
2-3/4 [70]  
3 [76]  
4 [102]  
3-13/16 [97]

### PREFIXES

\_\_\_ Z D.C.C.I. Body with Poly-Dome (4-1/4 [108] Dome Height)\*  
\_\_\_ ZA D.C.C.I. Body with Aluminum Dome (4-1/4 [108] Dome Height)  
☒ ZC D.C.C.I. Body with Low Silhouette Cast Iron Dome (4-1/4 [108] Dome Height)

### SUFFIXES

___ -AR Acid Resistant Epoxy Coated Finish	___ -XJ Vertical Expansion Joint (See Z190)
___ -FG Flush Grate	___ -84 Stainless Steel Perforated Gravel Guard
___ -G Galvanized Cast Iron	___ -85 Stainless Steel Perforated Extension
___ -SC Secondary Clamping Collar	___ -89 2 [51] High External Water Dam
___ -SS Stainless Mesh Screen Over Dome	___ -90 90° Threaded Side Outlet Body (2,3,4 [51,76,102])
___ -TC Neo-Loc Test Cap Gasket (2,3,4 [51,76,102] NL Bottom Outlet Only)	
___ -VP Vandal-Proof Secured Top	

\* Regularly furnished unless otherwise specified.



# Z187

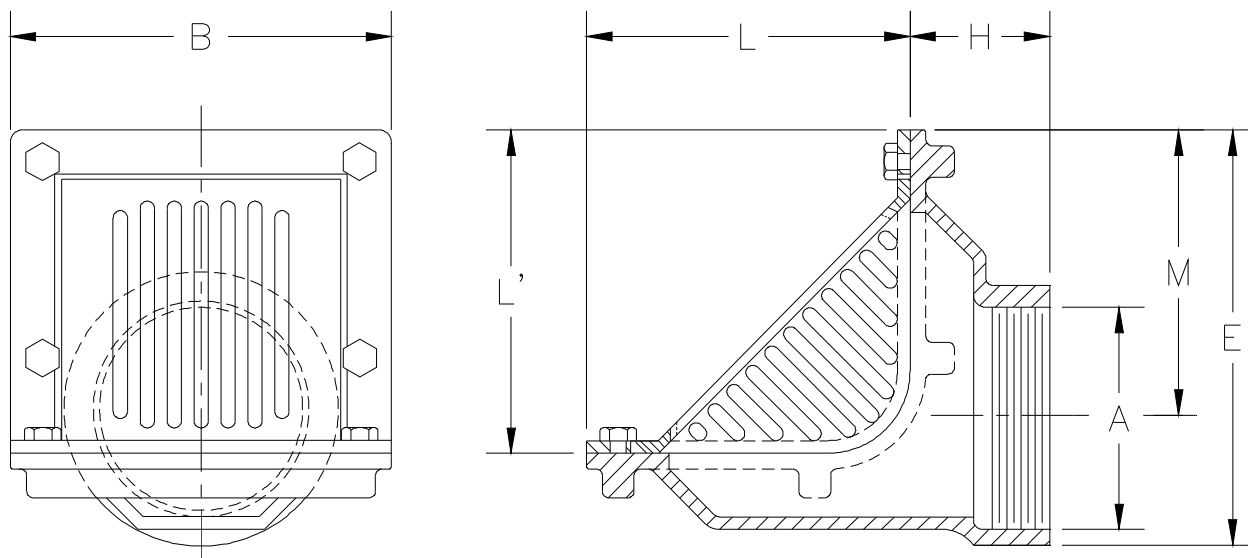
6 X 7 [152 X 178] OR 8 X 12 [203 X 305]

OBLIQUE SCUPPER DRAIN

SPECIFICATION SHEET

TAG SCD

Dimensional Data (inches and [ mm ]) are Subject to Manufacturing Tolerances and Change Without Notice



A-Pipe Size Inches	Dimensions In Inches [mm]					Approx. Wt. Lbs. [kg]	Grate Open Area Sq. In. [cm <sup>2</sup> ]
	B	H	L	L'	M		
2 [51]					6-11/16 [170]	22 [10]	
3 [76]	7-1/2 [191]	2-3/4 [70]	6-3/8 [162]	6-3/8 [162]	6-5/32 [156]	20 [9]	57 [368]
4 [102]					5-5/8 [143]	20 [9]	
6 [152]	12-1/2 [318]	3-1/2 [89]	8-3/8 [213]	8-3/8 [213]	7-3/8 [200]	32 [15]	57 [368]
8 [203]	12-1/2 [318]	3-1/2 [89]	8-3/8 [213]	8-3/8 [213]	6-3/8 [187]	33 [15]	57 [368]

## ENGINEERING SPECIFICATION: ZURN Z187

6 x 7 [152 x 178] or 8 x 12 [203 x 305] Scupper drain, Dura-Coated cast iron body with reversible back or bottom outlet, oblique aluminum grate with 90° combination frame and membrane flashing clamp.

## OPTIONS (Check/specify appropriate options)

### PIPE SIZE

2, 3, 4  
6, 8 [51 thru 102, 150, 203]  
2, 3, 4

### (Specify size/type) OUTLET

\_\_\_ IP Threaded  
\_\_\_ IP Threaded  
\_\_\_ NH No-Hub  
(IP w/Z1040)  
\_\_\_ NH No-Hub  
(IP w/Z1040)

### 'E' BODY HT. DIM.

8-3/16 [208]  
11 [279]  
8-3/16 [208]  
11 [279]

## PREFIXES

☒ Z D.C.C.I. Body with Grate\*  
\_\_\_ ZB D.C.C.I. Body with Polished Bronze Grate  
\_\_\_ ZN D.C.C.I. Body with Polished Nickel Bronze Grate  
\_\_\_ ZRB D.C.C.I. Body with Plain Bronze Grate

## SUFFIXES

\_\_\_ -BS Bronze Mesh Screen Over Grate  
\_\_\_ -DA Downspout Adapter (Previously Z188)  
(2 [51] thru 4 [102], 6 [152] only)  
\_\_\_ -FG Flush Grate

\_\_\_ -G Galvanized Cast Iron  
\_\_\_ -TS Secured Top  
\_\_\_ -VP Vandal Proof Secured Top

\* Regularly furnished unless otherwise specified.

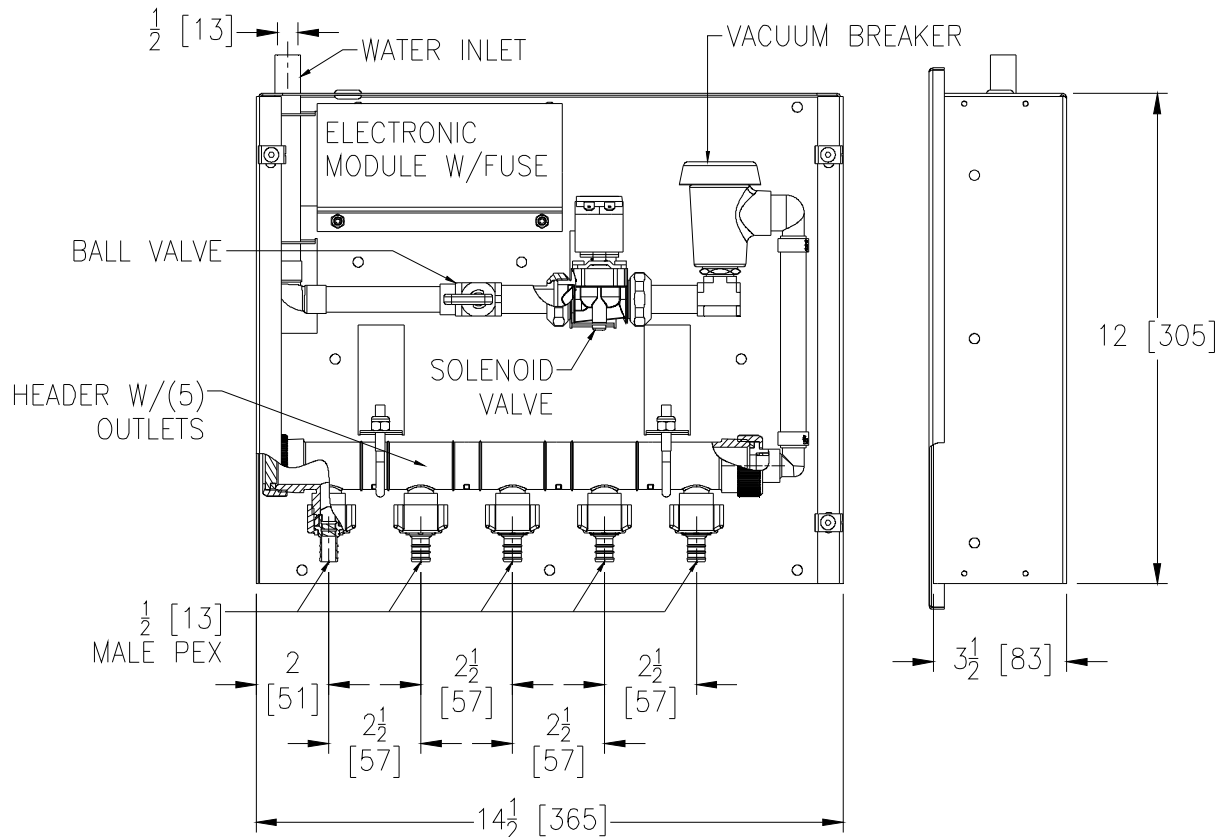


# Z1020XL ELECTRONIC TRAP PRIMER

SPECIFICATION SHEET

TAG TSP

Dimensional Data (inches and [ mm ]) are Subject to Manufacturing Tolerances and Change Without Notice



Approx. Wt. Lbs. [kg]
12 [5]

## ENGINEERING SPECIFICATION: ZURN Z1020XL

Factory programmed, 5-port, Lead-Free Electronic Trap Primer providing a six second water injection to traps every twenty-four hours\*. Trap primer features a galvanized steel combination surface or recessed housing and cover, 1/2 [13] solder copper inlet connection, brass ball-type stop valve, slow closing 24 VAC solenoid valve with integral strainer, 120 - 24 VAC transformer, brass atmospheric vacuum breaker, PEX waterway, and anti-scaling multi-port manifold with five 1/2 [13] Male PEX outlet connections.

*Zurn "XL" Lead-Free compliant products are a line of durable plumbing products designed and manufactured to comply with state laws and local codes that mandate maximum allowable lead content levels. Zurn "XL" products are manufactured in accordance to the Federal SWDA section 1417.*

## OPTIONS (Check/specify appropriate options)

### SUFFIXES

- \_\_\_ -CW Copper Waterway (with 1/2 [13] Female I.P.S. Connection)
- \_\_\_ -DU4 Additional Distribution Units with Copper Waterway (Specify Quantity)  
(Contact Zurn for Sizing Specifications)
- \_\_\_ -VP Vandal-Proof Secured Cover with Vandal-Proof Driver
- \_\_\_ -10 Ten Outlets

Min. Pressure: 3 psi  
Working Pressure: 20 to 100 psig  
Default Settings:  
-Frequency: 24 hours  
-Injection Time: 6 seconds.  
-Volume: 2 oz. min. per port

\* Regularly furnished unless otherwise specified. Alternate flow settings available upon request.

Zurn Industries, LLC | Specification Drainage Operation  
1801 Pittsburgh Avenue, Erie, PA U.S.A. 16502 · Ph. 855-663-9876, Fax 814-454-7929  
In Canada | Zurn Industries Limited  
3544 Nashua Drive, Mississauga, Ontario L4V 1L2 · Ph. 905-405-8272, Fax 905-405-1292  
[www.zurn.com](http://www.zurn.com)

Rev. -  
Date: 5/5/15  
C.N. No. 132620  
Prod. | Dwg. No. Z1020XL



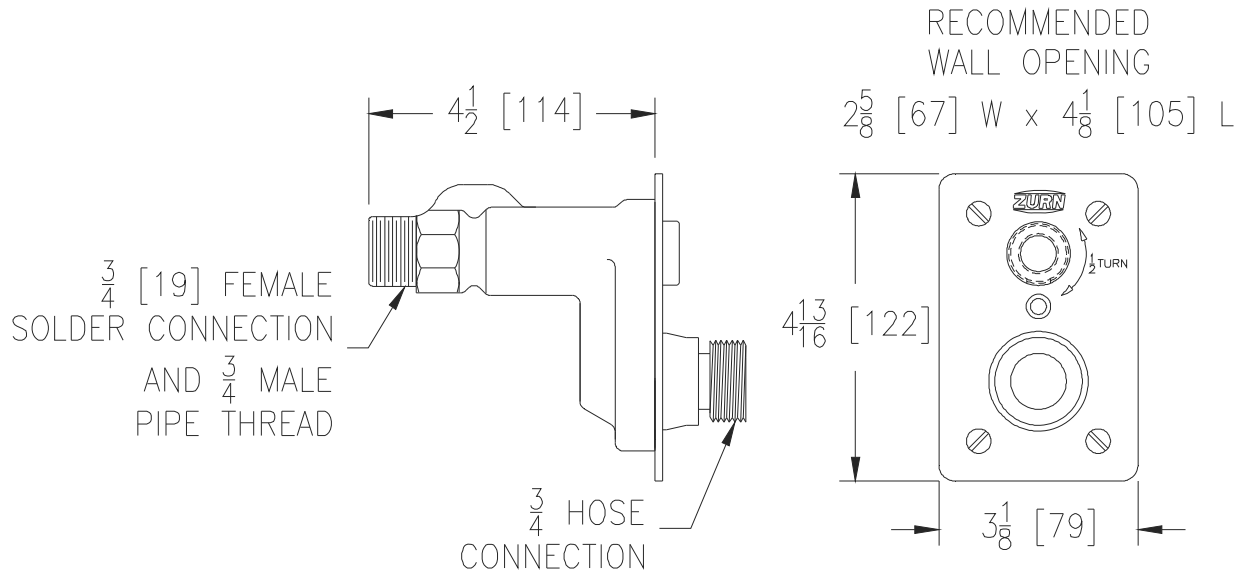
# Z1333XL

ECOLOTROL CERAMIC DISC WALL HYDRANT  
Exposed, Anti-Siphon, Automatic Draining, Moderate Climate

SPECIFICATION SHEET

TAG INTERIOR HB

Dimensional Data (inches and [mm]) are Subject to Manufacturing Tolerances and Change Without Notice

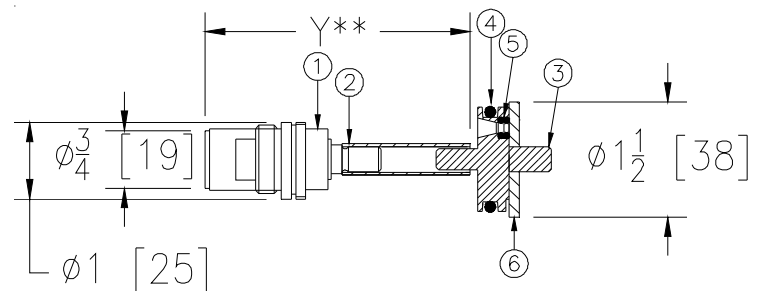


Wall Thickness in [mm]	Approx. Wt. lbs [kg]
6 [152]	3 [1]

## ENGINEERING SPECIFICATION: ZURN Z1333XL

Exposed, Ecolotrol™, lead-free, anti-siphon, moderate / interior wall hydrant for flush installation. Hydrant features integral backflow preventer with anti-siphon technology, all-bronze interior components with 1/2 turn long-life ceramic disc cartridge, combination 3/4" [19mm] female solder and 3/4" male pipe thread inlet connection, and 3/4" male hose connection. Hydrant furnished with type 304 stainless steel faceplate and includes operating key.

*Zurn "XL" Lead-Free compliant products are a line of durable plumbing products designed and manufactured to comply with state laws and local codes that mandate maximum allowable lead content levels. Zurn "XL" products are manufactured in accordance to the Federal SWDA section 1417.*



## OPTIONS (Check/specify appropriate options)

### SUFFIXES

—PB	Polished Bronze Face
—RK	Hydrant Parts Repair Kit (HYD-RK-Z1321XL/33XL)
—RT12	Ceramic Cartridge Removal Tool (up to 12 [305] wall)

### Internal Components

Item	Name	Quan.
1	Ceramic Cartridge	1
2	Operating Tube	1
3	Operating Coupling	1
4	O-Ring	1
5	O-Ring	1
6	Retaining Washer	1

\* Regularly furnished unless otherwise specified.

\*\* When ordering replacement cartridge assembly Specify Y dim.

Zurn Industries, LLC | Specification Drainage Operation  
1801 Pittsburgh Avenue, Erie, PA U.S.A. 16502 · Ph. 855-663-9876, Fax 814-454-7929  
In Canada | Zurn Industries Limited  
3544 Nashua Drive, Mississauga, Ontario L4V 1L2 · Ph. 905-405-8272, Fax 905-405-1292  
[www.zurn.com](http://www.zurn.com)

Rev. B  
Date: 09/28/2017  
C.N. No. 138012  
Prod. | Dwg. No. Z1333XL

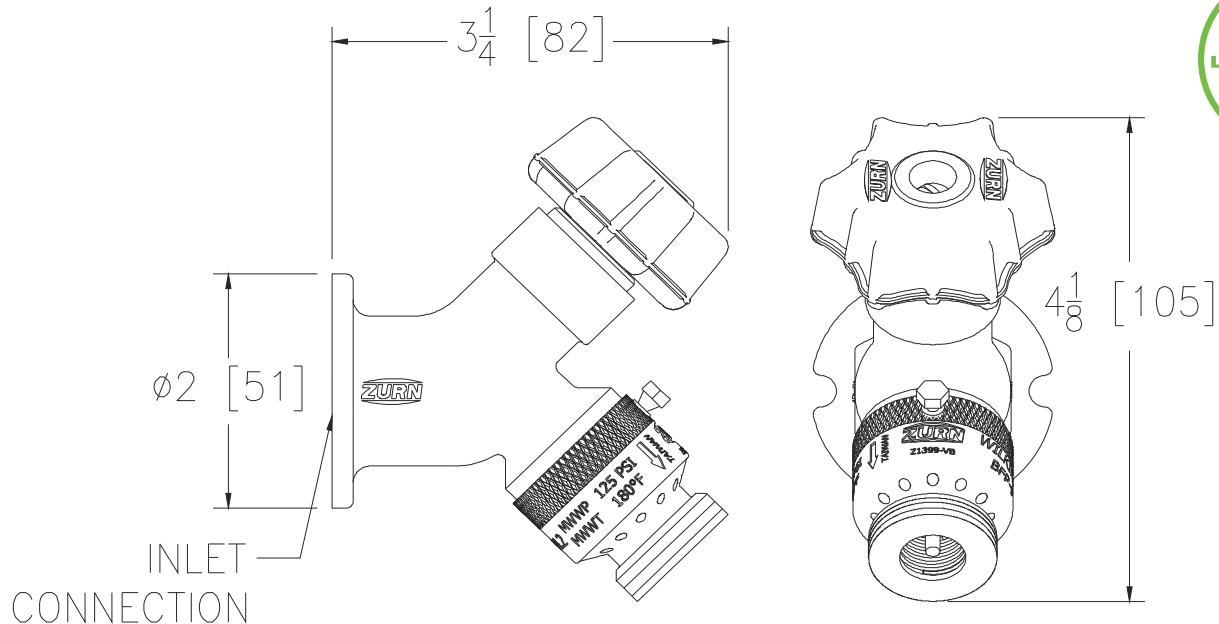


# Z1341XL WALL FAUCET

SPECIFICATION SHEET

TAG HB

Dimensional Data (inches and [mm]) are Subject to Manufacturing Tolerances and Change Without Notice



## -P12 and -P34 Inlet Connection Shown

Inlet Connection	Inlet Description in [mm]	Approx. Wt. lbs [kg]
___ -C12	1/2 [13] Solder x 3/4 [19] Solder	2 [1]
___ -C12-PX	1/2 [13] PEX	2 [1]
___ -CP12	1/2 [13] Solder x 1/2 [13] MPT	2 [1]
___ -P12	1/2 [13] FPT	2 [1]
___ -P34	3/4 [19] FPT	2 [1]

## ENGINEERING SPECIFICATION: ZURN Z1341XL

Exposed, lead-free, anti-siphon, moderate climate wall hydrant for residential and light commercial applications. Hydrant features Z1399-VB external vacuum breaker with 3/4" [19] male hose connection, bronze and stainless steel interior components, vandal resistant operating stem, and secured wheel-type handle. Hydrant is finished with rough bronze exterior with a choice of five different inlet connection options and includes an optional loose key.

## OPTIONS (Check/specify appropriate options)

### SUFFIXES

___ -PB	Polished Bronze Finish
___ -PC	Polished Chrome Finish
___ -RC	Rough Chrome Finish
___ -RK	Hydrant Parts Repair Kit

*Zurn "XL" Lead-Free compliant products are a line of durable plumbing products designed and manufactured to comply with state laws and local codes that mandate maximum allowable lead content levels. Zurn "XL" products are manufactured in accordance to the Federal SWDA section 1417.*

\* Regularly furnished unless otherwise specified.

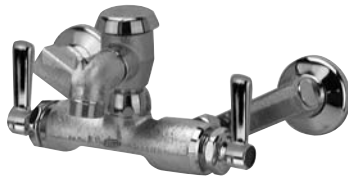
Zurn Industries, LLC | Specification Drainage Operation  
1801 Pittsburgh Avenue, Erie, PA U.S.A. 16502 · Ph. 855-663-9876, Fax 814-454-7929  
In Canada | Zurn Industries Limited  
3544 Nashua Drive, Mississauga, Ontario L4V 1L2 · Ph. 905-405-8272, Fax 905-405-1292  
[www.zurn.com](http://www.zurn.com)

Rev. -  
Date: 3/23/15  
C.N. No. 131803  
Prod. | Dwg. No. Z1341XL



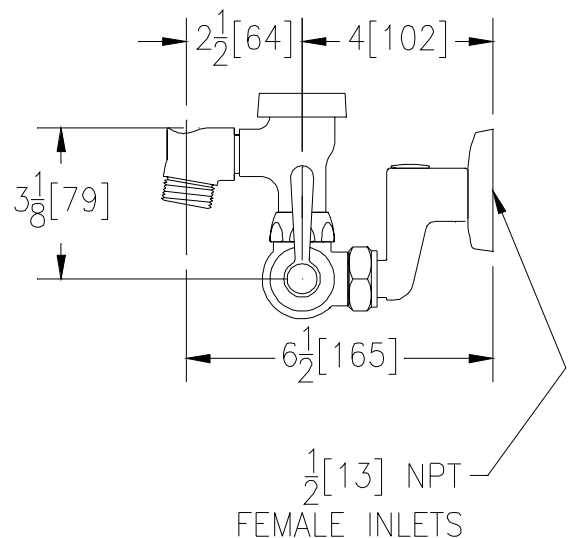
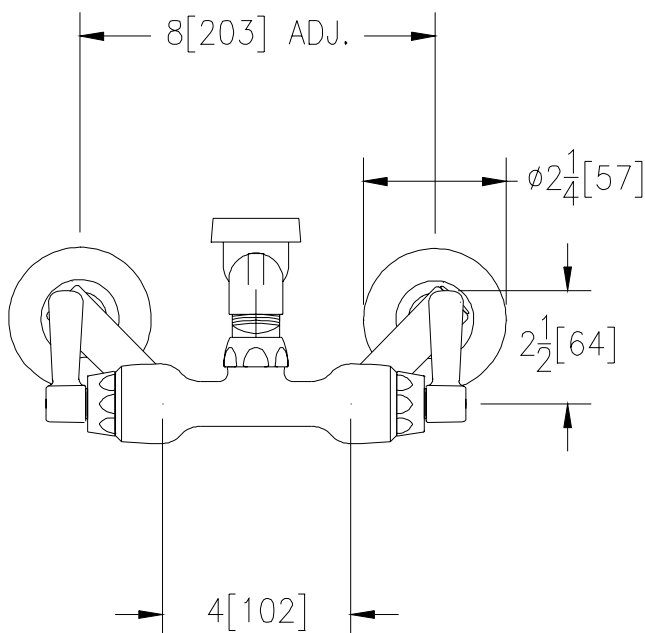
# SERVICE SINK FAUCET Z841L1-RC

TAG HB



## Engineering Specifications: Zurn AquaSpec® Z841L1-RC

Rough chrome-plated cast brass service sink faucet with quarter turn ceramic disc cartridges, 2-1/2" [64mm] long swivel inlets (with integral stops) providing adjustable centers from 4" [102mm] to 8-3/8" [213mm] and a 2-1/2" [64mm] vacuum breaker spout with pail hook and an integral 3/4" [19mm] hose-threaded outlet. Unit is provided with 2-1/2" [64mm] vandal-resistant color-coded brass lever handles.



Note: All dimensions are for reference only. Do not use for pre-plumbing

## OPTIONAL ACCESSORIES

Suffix	Description
— -SSI	3/8" [10mm] Short Swivel Inlets
— -WHK	Wall Hook
— -5H	5' [152cm] Vinyl Hose

ZURN INDUSTRIES, INC. ♦ COMMERCIAL BRASS OPERATION ♦ 2640 SOUTH WORK STREET ♦ FALCONER NY 14733

Phone: 1-716-665-1132 ♦ Fax: 1-716-665-1135 ♦ World Wide Web: [www.zurn.com](http://www.zurn.com)

In Canada: ZURN INDUSTRIES LIMITED ♦ 3544 Nashua Drive ♦ Mississauga, Ontario L4V1L2 ♦ Phone: 905/405-8272 Fax: 905/405-1292





# Z1320XL

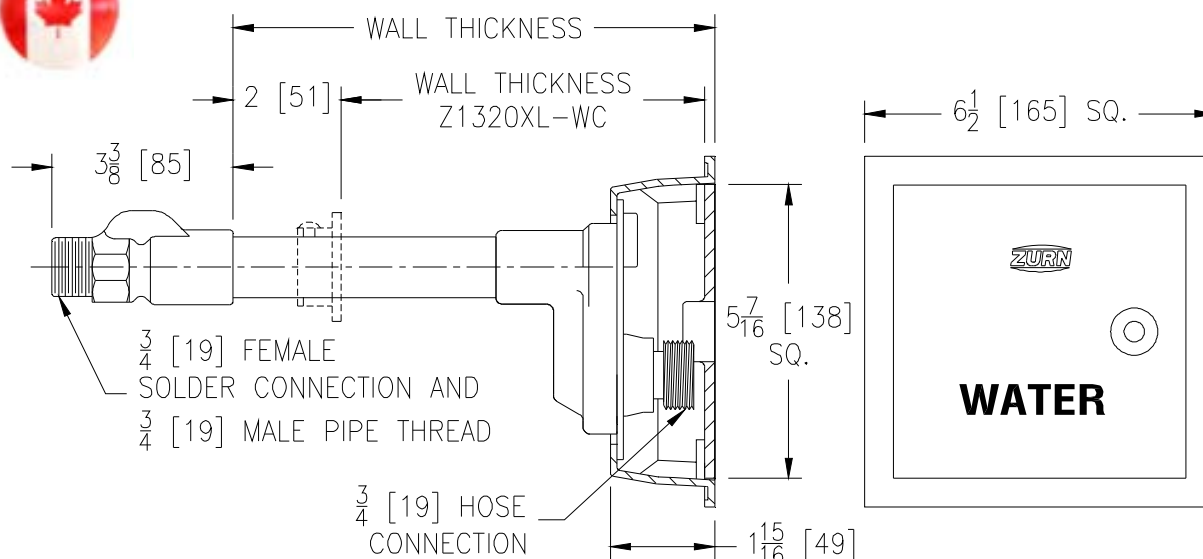
## ECOLOtrol CERAMIC DISC WALL HYDRANT

Encased, Non-Freeze, Anti-Siphon, Automatic Draining

SPECIFICATION SHEET

TAG EXT NFHB

Dimensional Data (inches and [mm]) are Subject to Manufacturing Tolerances and Change Without Notice



Wall Thickness in [mm]	Approx. Wt. lbs [kg]
6, 8 [152, 203]	8 [4]
10, 12, 14 [254, 305, 356]	9 [4]
16, 18 [406, 457]	10 [5]
20, 22, 24 [508, 559, 610]	11 [5]
26, 30 [660, 762]	13 [6]

### ENGINEERING SPECIFICATION: ZURN Z1320XL

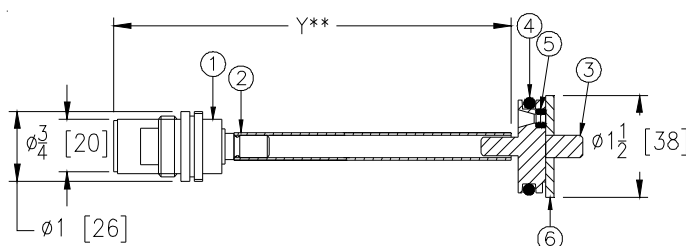
Encased, Ecolotrol™, lead-free, non-freeze automatic draining wall hydrant for flush installation. Hydrant features integral backflow preventer with anti-siphon technology, copper casing, all-bronze interior components with 1/2 turn long-life ceramic disc cartridge, combination 3/4" [19] female solder and 3/4" [19] male pipe thread inlet connection, and 3/4" [19] male hose connection. Hydrant furnished with nickel bronze housing with locking hinged cover stamped "WATER" and includes operating key.

*Zurn "XL" Lead-Free compliant products are a line of durable plumbing products designed and manufactured to comply with state laws and local codes that mandate maximum allowable lead content levels. Zurn "XL" products are manufactured in accordance to the Federal SWDA section 1417.*

### OPTIONS (Check/specify appropriate options)

#### SUFFIXES

___ -CL	Cylinder Lock
___ -PB	Polished Bronze Face
___ -RK	Hydrant Parts Repair Kit (HYD-RK-Z1321XL-33XL)
___ -RT12	Ceramic Cartridge Removal Tool (Up to 12 [305] Wall)
___ -RT24	Ceramic Cartridge Removal Tool (Up to 24 [610] Wall)
___ -RT36	Ceramic Cartridge Removal Tool (Up to 36 [915] Wall)
___ -WC	Wall Clamp
___ -34EL	3/4 [19] 90° Solder Inlet Elbow
___ -34FIP	3/4 [19] IP Straight Female Inlet Adapter



### Internal Components

Item	Name	Quan.
1	Ceramic Cartridge	1
2	Operating Tube	1
3	Operating Coupling	1
4	O-Ring	1
5	O-Ring	1
6	Retaining Washer	1

\* Regularly furnished unless otherwise specified.

\*\* When ordering replacement cartridge assembly Specify Y dim.

Zurn Industries, LLC | Specification Drainage Operation  
1801 Pittsburgh Avenue, Erie, PA U.S.A. 16502 · Ph. 855-663-9876, Fax 814-454-7929  
In Canada | Zurn Industries Limited  
3544 Nashua Drive, Mississauga, Ontario L4V 1L2 · Ph. 905-405-8272, Fax 905-405-1292  
[www.zurn.com](http://www.zurn.com)

Rev. A  
Date: 8/2815  
C.N. No. 133098  
Prod. | Dwg. No. Z1320XL





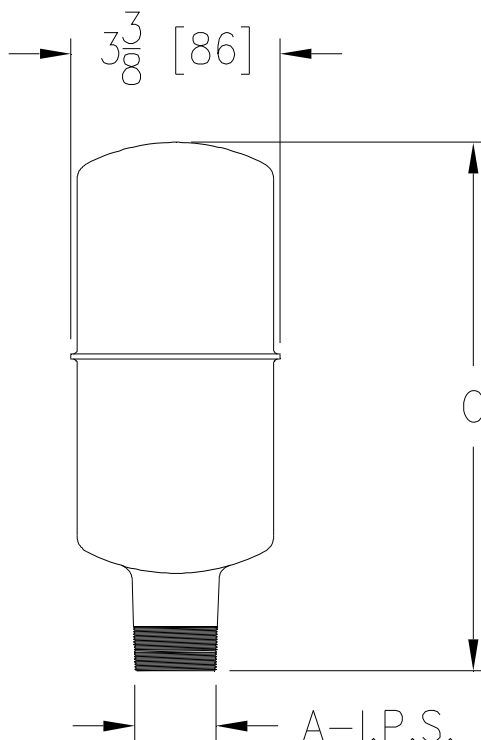
# Z1700

## SHOKTROL WATER HAMMER ARRESTORS

SPECIFICATION SHEET

TAG WHA

Dimensional Data (inches and [ mm ]) are Subject to Manufacturing Tolerances and Change Without Notice



Size	A Inches C		Approx. Wt. Lbs. [kg]	Fixture Unit Capacity
100	3/4 [19]	3-1/2 [90]	1 [.5]	1-11
200	3/4 [19]	3-1/2 [90]	1-1/2 [.7]	12-32
300	1 [25]	4-1/2 [114]	1-3/4 [.8]	33-60
400	1 [25]	6-5/8 [168]	2-3/4 [1.2]	61-113
500	1 [25]	7-1/2 [191]	3-1/4 [1.5]	114-154
600	1 [25]	8-1/2 [216]	3-3/4 [1.7]	155-330

**ENGINEERING SPECIFICATION: ZURN Z1700**

Shoktrol Water Hammer Arrestors are regularly furnished in all stainless steel construction. Pipe threads are accurately machined to assure tight connection. 3/4 [19] male I.P.S. inlet is standard for the 100 and 200 size units, while 1 [25] male I.P.S. inlet is standard for sizes 300 thru 600.

All sizes of Zurn Z1700 Shoktrol Water Hammer Arrestors comply with the following specifications:

PDI WH-201  
ANSI A112.26.1M  
ASSE 1010

Where required in piping systems, properly sized water hammer arrestors shall be ZURN Z1700 (specify size) with nesting type bellows contained within a casing having sufficient displacement volume to dissipate the calculated kinetic energy generated, in the piping system. Both casing and bellows constructed of Type 304 stainless steel.

REV. C DATE: 11/15/10 C.N. NO. 120379

DWG. NO. 59412 PRODUCT NO. Z1700

\*REGULARLY FURNISHED UNLESS OTHERWISE SPECIFIED

ZURN INDUSTRIES, LLC ♦ SPECIFICATION DRAINAGE OPERATION ♦ 1801 Pittsburgh Ave. ♦ Erie, PA 16514

Phone: 814/455-0921 ♦ Fax: 814/454-7929 ♦ World Wide Web: [www.zurn.com](http://www.zurn.com)

In Canada: ZURN INDUSTRIES LIMITED ♦ 3544 Nashua Drive ♦ Mississauga, Ontario L4V1L2 ♦ Phone: 905/405-8272 Fax: 905/405-1292



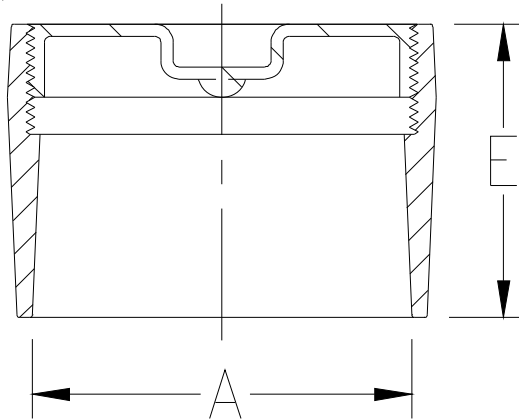
# Z1440

## CLEANOUT FERRULE WITH PLUG

SPECIFICATION SHEET

TAG LINE CO

Dimensional Data (inches and [ mm ]) are Subject to Manufacturing Tolerances and Change Without Notice



Dimensions In Inches[mm]		Approx. Wt. Lbs. [kg]
A-Pipe Size	E	
2 [51]	2-1/2 [64]	2 [1]
3 [76]	2-3/4 [70]	4 [2]
4 [102]	3 [76]	5 [2]
6 [152]	3 [76]	8 [4]
8 [203]	3-1/2 [89]	13 [6]

**ENGINEERING SPECIFICATION: ZURN Z1440**

Cleanout with Dura-Coated cast iron body, with gas and watertight ABS tapered thread plug.

**OPTIONS** (Check/specify appropriate options)**PIPE SIZE**

2,3,4,6,8, [51,76,102,152,203]

(Specify size) **OUTLET**

\_\_\_\_ NH No-Hub

**'E' BODY HT. DIM.**

See Chart

**PREFIXES**☒ Z Dura-Coated Cast Iron Body and ABS Plug\***SUFFIXES**☐ -A Raised Head Plug  
☒ -BP Bronze Plug  
☐ -G Galvanized Cast Iron

\* Regularly furnished unless otherwise specified.

**Zurn Industries, LLC | Specification Drainage Operation**  
1801 Pittsburgh Avenue, Erie, PA U.S.A. 16502 · Ph. 855-663-9876, Fax 814-454-7929  
In Canada | **Zurn Industries Limited**  
3544 Nashua Drive, Mississauga, Ontario L4V 1L2 · Ph. 905-405-8272, Fax 905-405-1292  
[www.zurn.com](http://www.zurn.com)

Rev. F  
Date: 09/28/2017  
C.N. No. 138022  
Prod. | Dwg. No. Z1440

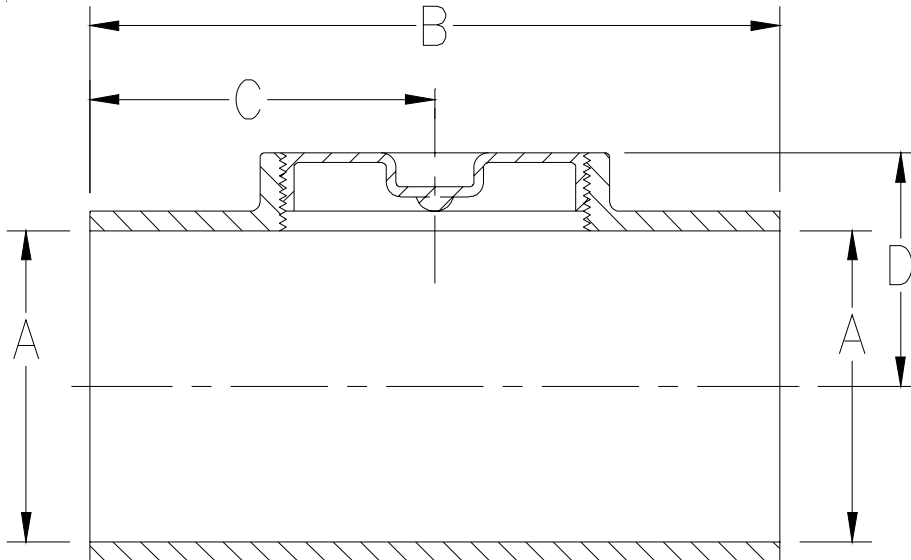


# Z1445 CLEANOUT TEE

SPECIFICATION SHEET

TAG STACK CO

Dimensional Data (inches and [ mm ]) are Subject to Manufacturing Tolerances and Change Without Notice



Dimensions In Inches							Approx. Wt. Lbs. [kg]
A- Pipe Size	NH			HB X SP			
	B	C	D	B	C	D	
2 [51]	6-3/8 [162]	3-3/16 [81]	1-3/4 [44]	10 [254]	4-1/2 [114]	2-3/4 [70]	8 [4]
3 [76]	7-3/4 [197]	3-7/8 [98]	2-1/2 [64]	12 [305]	5-3/4 [146]	3 [76]	15 [7]
4 [102]	8-7/8 [225]	4-7/16 [113]	3 [76]	12 [305]	5-3/4 [146]	3-1/2 [89]	16 [7]
5 [127]	—	—	—	13 [330]	6-1/4 [159]	4 [102]	22 [10]
6 [152]	12-1/2 [318]	6-1/4 [159]	4-5/16 [110]	14 [356]	6-3/4 [171]	4-1/2 [114]	35 [16]
8 [203]	17 [432]	8-1/2 [216]	6-3/8 [162]	17 [432]	8-1/4 [210]	5-1/2 [140]	49 [22]

**ENGINEERING SPECIFICATION: ZURN Z1445**

Cleanout Tee. Dura-Coated cast iron body with gas and watertight ABS tapered thread plug.

**OPTIONS** (Check/specify appropriate options)**PIPE SIZE**(Specify size/type) **OUTLET**

2 thru 4-6-8 [51 thru 102-152-203]

\_\_\_ NH

No-Hub

2 thru 6-8 [51 thru 152-203]

\_\_\_ HB X SP

Hub x Spigot

**PREFIXES**

Z

Dura-Coated Cast Iron\*

**SUFFIXES**

-A

Raised Head Plug



-BP

Bronze Plug



-G

Galvanized Cast Iron

REV. D DATE: 11/04/10 C.N. NO. 120250

DWG. NO. 58766

PRODUCT NO. Z1445

\*REGULARLY FURNISHED UNLESS OTHERWISE SPECIFIED

ZURN INDUSTRIES, LLC. ♦ SPECIFICATION DRAINAGE OPERATION ♦ 1801 Pittsburgh Ave. ♦ Erie, PA 16514

Phone: 814/455-0921 ♦ Fax: 814/454-7929 ♦ World Wide Web: www.zurn.com

In Canada: ZURN INDUSTRIES LIMITED ♦ 3544 Nashua Drive ♦ Mississauga, Ontario L4V1L2 ♦ Phone: 905/405-8272 Fax: 905/405-1292

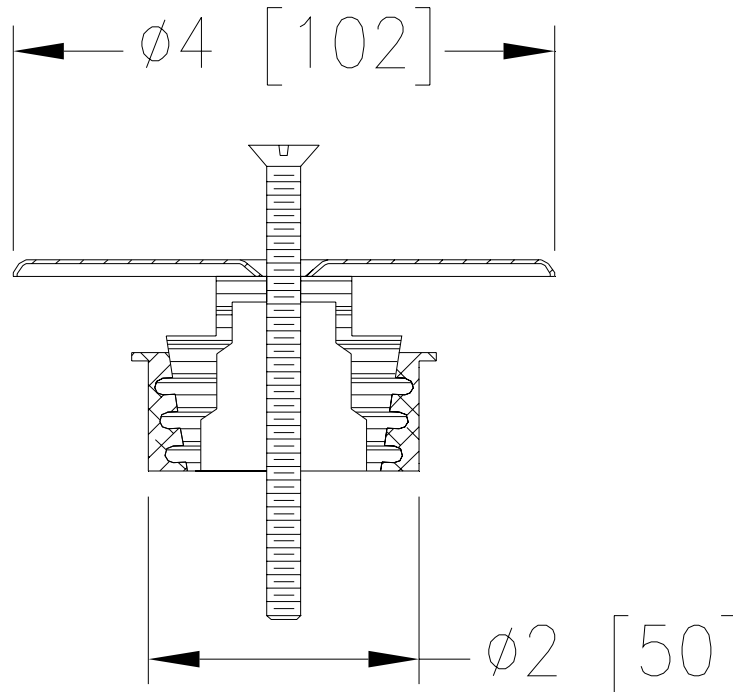


# Z1666-1 URINAL CLEANOUT

SPECIFICATION SHEET

TAG URINAL CO

Dimensional Data (inches and [mm]) are Subject to Manufacturing Tolerances and Change Without Notice



Pipe Size	Approx. Wt. Lbs. [kg]
1-1/2, 2 [38, 51]	2 [1]

**ENGINEERING SPECIFICATION: ZURN Z1666-1**

Urinal Cleanout with 4 [102] diameter stainless steel access cover, centre securing screw, complete with 1-1/2 [38] or 2 [51] expandable plug.

**OPTIONS** (Check/specify appropriate options)**SUFFIXES**

- ☒ -VP Vandal-Proof Screws
- ☐ -7 7 [178] Stainless Steel Access Cover
- ☐ -9 9 [229] Stainless Steel Access Cover

REV. A DATE: 3/30/09 C.N. NO. 99855

DWG. NO. 63654 PRODUCT NO. Z1666-1

\*REGULARLY FURNISHED UNLESS OTHERWISE SPECIFIED



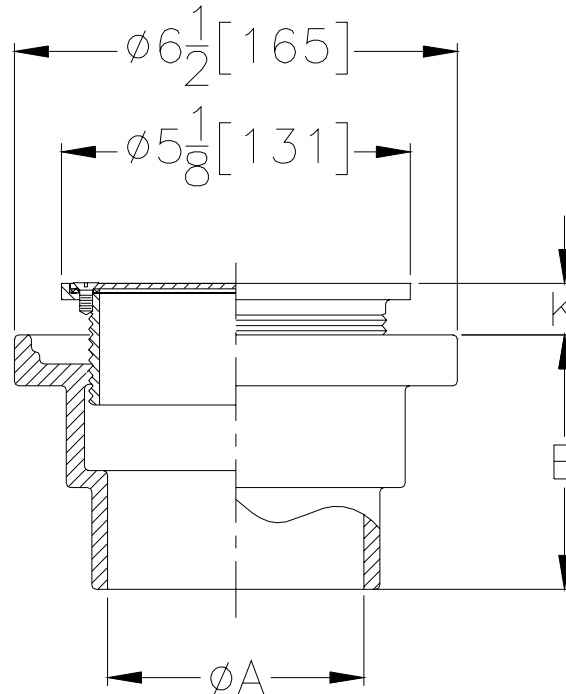
**ZN-1602**  
**ADJUSTABLE ROUND MEDIUM-DUTY**  
**NICKEL BRONZE CLEANOUT**

**SPECIFICATION SHEET**

**TAG** FCO



Dimensional Data (inches and [mm]) are Subject to Manufacturing Tolerances and Change Without Notice



Pipe Size Inches / [mm]	Approx. Wt. Lbs. / [kg]	K	
		Min.	Max.
2-3-4 [51-76-102]	6 [3]	1/2 [13]	1-3/8 [35]

**ENGINEERING SPECIFICATION:** ZURN ZN-1602 Adjustable Floor Cleanout, Dura-Coated cast iron body with neoprene body sleeve, polished nickel bronze adjustable head and gasketed, secured, scoriated cover with stainless steel screws.

**OPTIONS** (Check/specify appropriate options)

**PIPE SIZE**

2,3,4 [51,76,102]

(Specify size/type) **OUTLET**

\_\_\_\_ NH No-Hub

**E BODY HT. DIM.**

3-3/4" [95mm]

**PREFIXES**

\_\_\_\_ ZX- Heavy-Duty Cast Iron Top

**SUFFIXES**

\_\_\_\_ -CM Carpet Marker  
\_\_\_\_ -G Galvanized  
☒ -SP Seal Plug  
\_\_\_\_ -T Square Top  
\_\_\_\_ -TX Square Top Recessed 1/8" [3mm] Tile (Formerly ZN-1614)  
\_\_\_\_ -VP Vandal-Proof Screws  
\_\_\_\_ -X Round Top Recessed 1/8" [3mm] Tile (Formerly ZN-1608)  
\_\_\_\_ -1600 Wide Flange Body

**REV. B**    **DATE: 06/16/05**    **C.N. NO. 89833**

**DWG. NO. 65129**    **PRODUCT NO. ZN-1602**

\*REGULARLY FURNISHED UNLESS OTHERWISE SPECIFIED



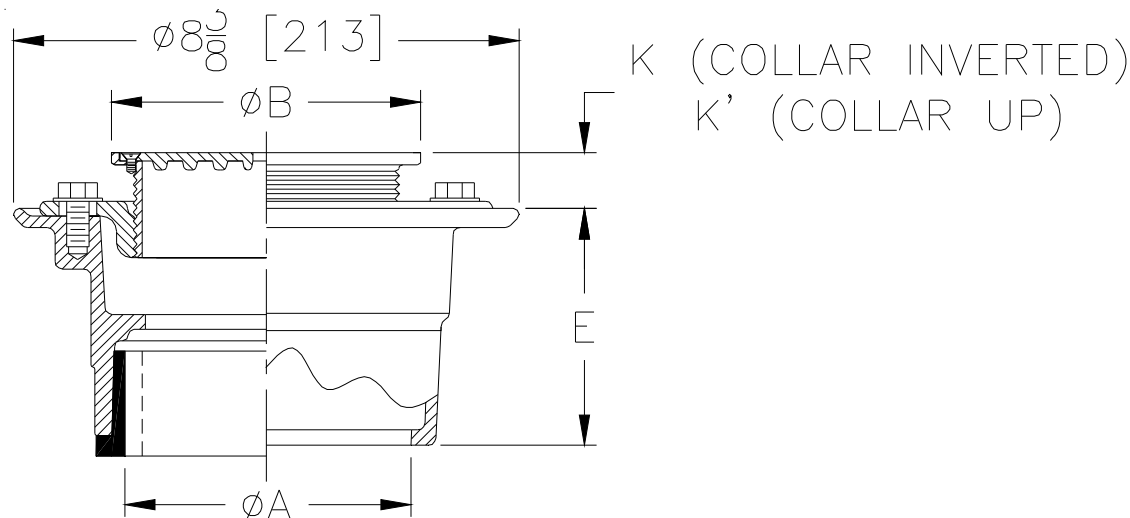
# ZX415-A

## BODY ASSEMBLY WITH "TYPE A" STRAINER

SPECIFICATION SHEET

TAG FD

Dimensional Data (inches and [mm]) are Subject to Manufacturing Tolerances and Change Without Notice



Str. Desig.	Dimensions In Inches						Approx. Wt. Lbs. [kg]	Strainer Open Area Sq. In. [cm²]
	A Pipe Size	B Strainer Dia.	K		K'			
			Min.	Max.	Min.	Max.		
-5A	2-3-4-6 [51-76-102-152]	5 [127]	1 [25]	2 [51]	1-5/8 [41]	2-5/8 [67]	11 [5]	7 [45]

**ENGINEERING SPECIFICATION: ZURN ZX415-A**

Floor and Shower Drain, Dura-Coated cast iron body with bottom outlet, combination invertible membrane clamp, and adjustable collar with "Type A" heavy-duty Dura-Coated cast iron strainer.

**OPTIONS** (Check/specify appropriate options)**PIPE SIZE**

2,3,4 [51,76,102]  
2,3,4 [51,76,102]  
2,3,4,6 [51,76,102,152]  
2,3,4 [51,76,102]  
2,3,4 [51,76,102]

(Specify size/type) **OUTLET**

\_\_\_\_\_ IC Inside Caulk  
\_\_\_\_\_ IG Inside Gasket  
\_\_\_\_\_ IP Threaded  
\_\_\_\_\_ NH No-Hub  
\_\_\_\_\_ NL Neo-Loc

**E BODY HT. DIM.**

3-7/8 [98]  
3-7/8 [98]  
2-5/8 [67]  
3-7/8 [98]  
4-5/8 [117]

**SUFFIXES**

\_\_\_\_\_ -AR Acid Resistant Epoxy Coated Cast Iron  
\_\_\_\_\_ -DC Debris Cover  
\_\_\_\_\_ -EF 3/8 [10mm] Extension Frame  
\_\_\_\_\_ -FS Floating Slab  
\_\_\_\_\_ -G Galvanized Cast Iron  
✓ \_\_\_\_\_ -P 1/2 [13mm] Trap Primer Connection  
\_\_\_\_\_ -SA Stabilizer Assembly  
\_\_\_\_\_ -SQ Stabilizer Q-Deck  
\_\_\_\_\_ -SR Stabilizer Ring  
\_\_\_\_\_ -TC Neo-Loc Test Cap Gasket  
\_\_\_\_\_ -U 1 [25mm] - 3 [76mm] High Extension Adapter

\_\_\_\_\_ -V Backwater Valve  
\_\_\_\_\_ -VP Vandal-Proof Secured Top  
\_\_\_\_\_ -X Squeezin Backwater Valve  
\_\_\_\_\_ -Y Sediment Bucket  
\_\_\_\_\_ -414 4 [102mm] Diameter Cast Iron Funnel  
\_\_\_\_\_ -6NH 6 [152mm] No-Hub Outlet (6IP w/Z-1040)  
\_\_\_\_\_ -90 2 [51mm], 3 [76mm] or 4 [102mm] Side Outlet  
Body Assembly (IP or NH only)

\*REGULARLY FURNISHED UNLESS OTHERWISE SPECIFIED

REV. A DATE: 01/22/13 C.N. NO. 128705

DWG. NO. 63635

PRODUCT NO. ZX415-A



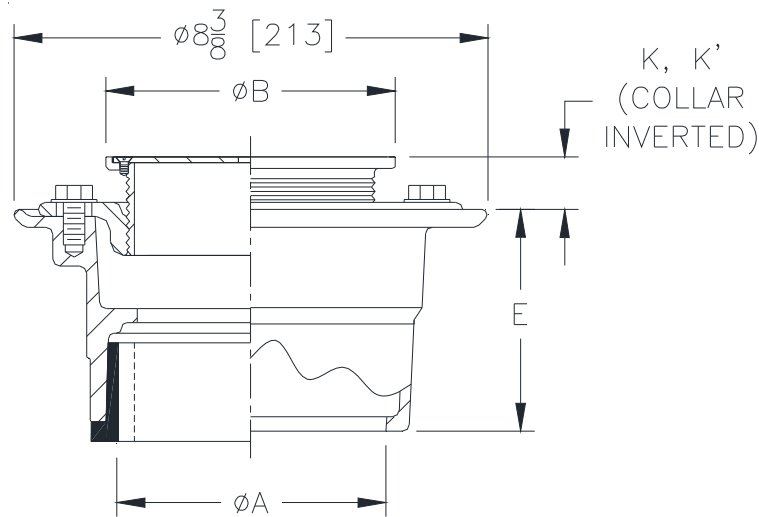
# ZN415-B

## BODY ASSEMBLY WITH "TYPE B" STRAINER

SPECIFICATION SHEET

TAG FD FIN AREA

Dimensional Data (inches and [ mm ]) are Subject to Manufacturing Tolerances and Change Without Notice



Strainer Designation	Dimensions In Inches [mm]						Approx. Weight lbs [kg]	Strainer Open Area Sq. In. [sq. cm]
	A' Pipe Size	B' Pipe Size	K		K'			
			Min.	Max.	Min.	Max.		
✓ -B5	2,3,4 [51, 76,102]	5 [127]	1/2 [13]	1-5/8 [41]	1-3/8 [35]	2-3/8 [60]	11 [5]	8 [52]
-B6	2,3,4 [51, 76,102]	6 [152]	3/4 [19]	1-3/4 [44]	1-5/8 [41]	2-3/4 [70]	13 [6]	9 [58]
-B7	2,3,4 [51, 76,102]	7 [178]	1 [25]	2-1/4 [57]	2 [51]	3-1/8 [79]	14 [6]	12 [77]
-B8	3,4 [76,102]	8 [203]	1-1/8 [29]	2-1/4 [57]	2 [51]	3-1/8 [79]	16 [7]	18 [116]
-B8	6 [152]	8 [203]	1-1/8 [29]	2-1/4 [57]	2 [51]	3-1/8 [79]	18 [8]	18 [116]

### ENGINEERING SPECIFICATION: ZURN ZN-415-B

Floor and Shower Drain, Dura-Coated cast iron body with bottom outlet, combination invertible membrane clamp and adjustable collar with "Type B" polished nickel bronze strainer with stainless steel screws.

### OPTIONS (Check/specify appropriate options)

#### PIPE SIZE

2,3,4 [51,76,102]  
2,3,4 [51,76,102]  
2,3,4,6 [51,76,102,152]  
2,3,4 [51,76,102]  
2,3,4 [51,76,102]

#### (Specify size/type) OUTLET

\_\_\_\_\_ IC Inside Caulk  
\_\_\_\_\_ IG Inside Gasket  
\_\_\_\_\_ IP Threaded  
\_\_\_\_\_ NH No-Hub  
\_\_\_\_\_ NL Neo-Loc

#### E BODY HT. DIM.

3-7/8 [98]  
3-7/8 [98]  
2-5/8 [67]  
3-7/8 [98]  
4-5/8 [117]

### SUFFIXES

\_\_\_\_\_ -AR Acid Resistant Epoxy Coated Cast Iron  
\_\_\_\_\_ -FS Floating Slab  
✓ \_\_\_\_\_ -G Galvanized Cast Iron  
✓ \_\_\_\_\_ -P 1/2" [13mm] Trap Primer Connection  
\_\_\_\_\_ -U 1" [25mm] - 3" [76mm] High Extension Adapter  
✓ \_\_\_\_\_ -VP Vandal-Proof Secured Top

\_\_\_\_\_ -X Squeezin Backwater Valve  
\_\_\_\_\_ -Y Sediment Bucket  
\_\_\_\_\_ -414 4" [102mm] Diameter Cast Iron Funnel  
\_\_\_\_\_ -6NH 6" [152mm] No-Hub Outlet (6IP w/Z-1040)  
\_\_\_\_\_ -90 2" [51mm], 3" [76mm] or 4" [102mm] Side Outlet Body Assembly (IP or NH only)

\* Regularly furnished unless otherwise specified.

Zurn Industries, LLC | Specification Drainage Operation  
1801 Pittsburgh Avenue, Erie, PA U.S.A. 16502 · Ph. 855-663-9876, Fax 814-454-7929  
In Canada | Zurn Industries Limited  
3544 Nashua Drive, Mississauga, Ontario L4V 1L2 · Ph. 905-405-8272, Fax 905-405-1292  
[www.zurn.com](http://www.zurn.com)

Rev. B  
Date: 07/06/2017  
C.N. No. 137250  
Prod. | Dwg. No. ZN415-B



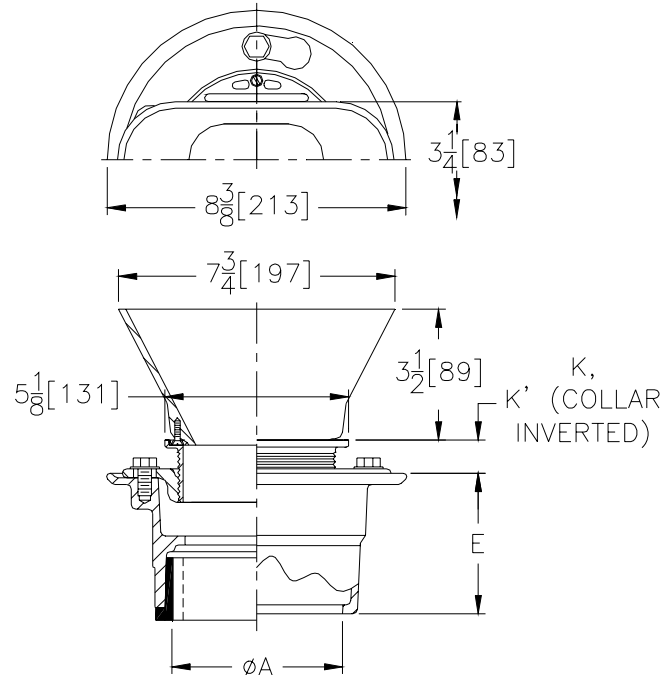
**Z -415-BF**  
**BODY ASSEMBLY**  
**WITH "TYPE BF" STRAINER**

**SPECIFICATION SHEET**

**TAG** FFD



Dimensional Data (inches and [mm]) are Subject to Manufacturing Tolerances and Change Without Notice



Str. Desig	Dimensions In Inches / [mm]						Approx. Wt. Lbs. / (kg)	Strainer Open Area Sq. In. / [sq cm]
	A Pipe Size	Str. Dia.	K		K'			
			Min.	Max.	Min.	Max.		
-BF	2-3-4-6 [51-76-102-152]	3-1/4 x 8 [83 x 203]	1/2 [13]	1-5/8 [41]	1-3/8 [35]	2-3/8 [60]	12 [5]	3 [19]

**ENGINEERING SPECIFICATION:** ZURN ZN-415-BF Oval Funnel Floor Drain, Dura-Coated cast iron body with bottom outlet, combination invertible membrane clamp and adjustable collar with "Type BF" cast iron open throat oval funnel grate with stainless steel screws.

**OPTIONS** (Check/specify appropriate options)

**PIPE SIZE**

2,3,4 [50,75,100]  
2,3,4 [50,75,100]  
2,3,4,6 [50,75,100,152]  
2,3,4 [50,75,100]  
2,3,4 [50,75,100]

(Specify size/type) **OUTLET**

\_\_\_\_ IC Inside Caulk  
\_\_\_\_ IG Inside Gasket  
\_\_\_\_ IP Threaded  
\_\_\_\_ NH No-Hub  
\_\_\_\_ NL Neo-Loc

**E BODY HT. DIM.**

3 7/8 [98]  
3 7/8 [98]  
2 5/8 [67]  
3 7/8 [98]  
4 5/8 [117]

**SUFFIXES**

\_\_\_\_ -AR Acid Resistant Epoxy Coated Cast Iron  
\_\_\_\_ -FS Floating Slab  
☒ -G Galvanized Cast Iron  
\_\_\_\_ -P 1/2" [13mm] Trap Primer Connection  
☒ -U 1" [25mm] - 3" [76mm] High Extension Adapter  
\_\_\_\_ -VP Vandal-Proof Secured Top  
\_\_\_\_ -X Squeezin Backwater Valve  
\_\_\_\_ -Y Sediment Bucket  
\_\_\_\_ -6NH 6" [152mm] No-Hub Outlet (6IP w/Z-1040)  
\_\_\_\_ -90 2" [51mm], 3" [76mm] or 4" [102mm] Side  
Outlet Body Assembly (IP or NH only)

**REV. A**    **DATE: 06/16/05**    **C.N. NO. 89831**

**DWG. NO. 63639**    **PRODUCT NO. ZN-415-BF**

\*REGULARLY FURNISHED UNLESS OTHERWISE SPECIFIED





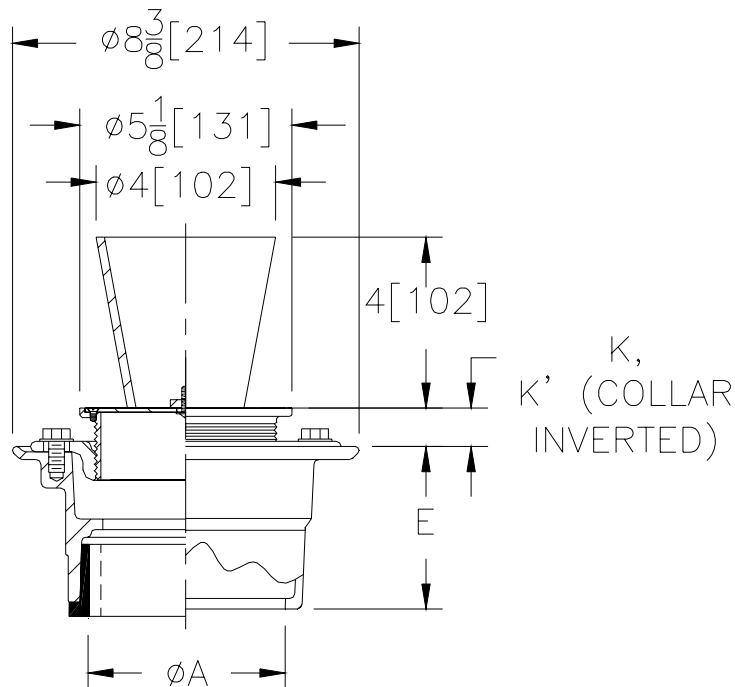
**Z -415-BE**  
**BODY ASSEMBLY**  
**WITH "TYPE BE" STRAINER**

**SPECIFICATION SHEET**

**TAG** FFD 4" FUNNEL



Dimensional Data (inches and [mm]) are Subject to Manufacturing Tolerances and Change Without Notice



Str. Desig.	Dimensions In Inches / [mm]						Approx. Wt. Lbs. / (kg)	Strainer Open Area Sq. In. / [sq cm]
	A Pipe Size	Str. Dia.	K		K'			
			Min.	Max.	Min.	Max.		
-BE5	2-3-4-6 [51-76-102-152]	5 [127]	1/2 [13]	1-5/8 [41]	1-3/8 [35]	2-3/8 [60]	8 [4]	5 [32]

**ENGINEERING SPECIFICATION:** ZURN Z-415-BE Funnel Floor Drain, Dura-Coated cast iron body with bottom outlet, combination invertible membrane clamp and adjustable collar with "Type BE" cast iron round funnel grate with stainless steel screws.

**OPTIONS** (Check/specify appropriate options)

**PIPE SIZE**

2,3,4 [50,75,100]  
2,3,4 [50,75,100]  
2,3,4,6 [50,75,100,152]  
2,3,4 [50,75,100]  
2,3,4 [50,75,100]

(Specify size/type) **OUTLET**

\_\_\_\_ IC Inside Caulk  
\_\_\_\_ IG Inside Gasket  
\_\_\_\_ IP Threaded  
\_\_\_\_ NH No-Hub  
\_\_\_\_ NL Neo-Loc

**E BODY HT. DIM.**

3 7/8 [98]  
3 7/8 [98]  
2 5/8 [67]  
3 7/8 [98]  
4 5/8 [117]

**SUFFIXES**

\_\_\_\_ -AR Acid Resistant Epoxy Coated Cast Iron  
\_\_\_\_ -FS Floating Slab  
\_\_\_\_ -G Galvanized Cast Iron  
\_\_\_\_ -P 1/2" [13mm] Trap Primer Connection  
\_\_\_\_ -U 1" [25mm] - 3" [76mm] High Extension Adapter  
\_\_\_\_ -VP Vandal-Proof Secured Top  
\_\_\_\_ -X Squeezin Backwater Valve  
\_\_\_\_ -Y Sediment Bucket  
\_\_\_\_ -6NH 6" [152mm] No-Hub Outlet (6IP w/Z-1040)  
\_\_\_\_ -90 2" [51mm], 3" [76mm] or 4" [102mm] Side  
Outlet Body Assembly (IP or NH only)

**REV. A** **DATE: 06/16/05** **C.N. NO. 89830**

**DWG. NO. 63638** **PRODUCT NO. ZN-415-BE**

\*REGULARLY FURNISHED UNLESS OTHERWISE SPECIFIED

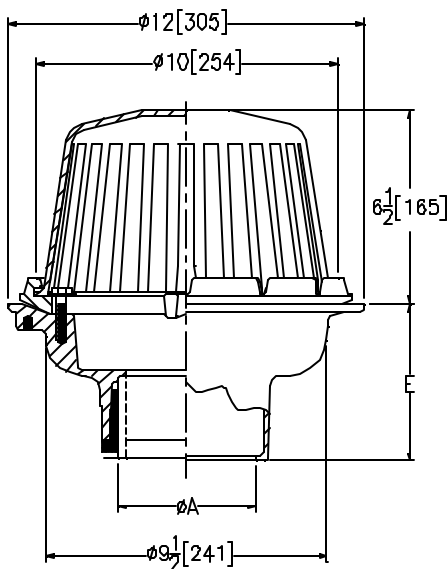


# Z121 12" [305] DIAMETER ROOF DRAIN

SPECIFICATION SHEET

TAG RD

Dimensional Data (inches and [mm]) are Subject to Manufacturing Tolerances and Change Without Notice



A Pipe Size Inches / [mm]	Approx. Wt. Lbs. / [kg]	Dome Open Area Sq. In. / [sq cm]
2-3-4 [51-76-102]	22 [10]	78 [503]
5-6 [127-152]		

**ENGINEERING SPECIFICATION:** ZURN Z121 12" [305] diameter roof drain. Dura-Coated cast iron body with combination membrane flashing clamp/gravel guard and Poly-Dome.

## OPTIONS (Check/specify appropriate options)

### PIPE SIZE

2 thru 6 [50 thru 150]  
2 thru 6 [50 thru 150]  
2 thru 6 [50 thru 150]  
2,3,4 [50,75,100]

### (Specify size/type) OUTLET

\_\_\_ IC Inside Caulk  
\_\_\_ IP Threaded  
\_\_\_ NH No-Hub  
\_\_\_ NL Neo-Loc

### E BODY HT. DIM.

5 1/4 [133]  
3 3/4 [95]  
5 1/4 [133]  
4 5/8 [117]

### PREFIXES

\_\_\_ Z D.C.C.I. Body with Poly-Dome\*  
☒ ZA D.C.C.I. Body with Aluminum Dome  
\_\_\_ ZC D.C.C.I. Body with Cast Iron Dome  
\_\_\_ ZRB D.C.C.I. Body with Plain Bronze Dome

### SUFFIXES

\_\_\_ -A Waterproof Flange  
\_\_\_ -AR Acid Resistant Epoxy Coated Finish  
\_\_\_ -BS Bronze Mesh Screen Over Dome  
☒ -C Underdeck Clamp  
\_\_\_ -DP Top Set® Roof Deck Plate (Replaces both the -C and -R)  
\_\_\_ -DR Adjustable Drain Riser Extension Assembly 3-5/8" [92] to 7-1/4" [184]  
\_\_\_ -E Static Extension 1 [25] thru 4 [102] (Specify Ht.)  
\_\_\_ -EB Elevating Body Plate  
\_\_\_ -ES Static Extension with Secondary Clamp Collar at Body (For clamping at roof drain body)  
\_\_\_ -FG Flush Grate  
\_\_\_ -G Galvanized Cast Iron

☒ -R Roof Sump Receiver  
\_\_\_ -SC Secondary Clamp Collar  
\_\_\_ -SE 3 3/8 [86] Slotted Extension  
\_\_\_ -SSM Stainless Steel Mesh Screen Over Dome  
\_\_\_ -TC Neo-LocTest CapGasket (2 [51] to 4 [102] NL Bottom Outlet Only)  
\_\_\_ -VP Vandal Proof Secured Top  
\_\_\_ -XJ Vertical Expansion Joint (See Z-1900)  
\_\_\_ -84 Stainless Steel Perforated Gravel Guard  
\_\_\_ -85 Stainless Steel Perforated Extension  
\_\_\_ -89 2 [51] High External Water Dam  
\_\_\_ -90 90° Threaded Side Outlet Body

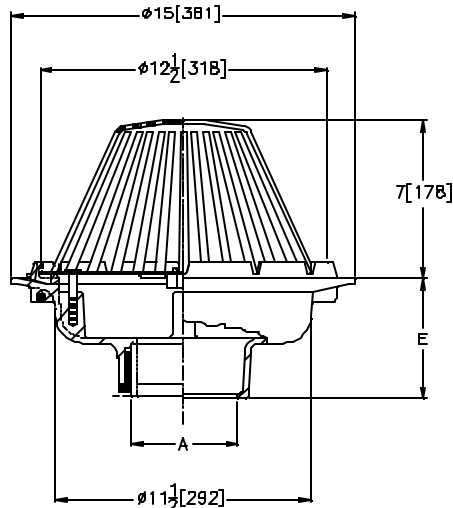
\*REGULARLY FURNISHED UNLESS OTHERWISE SPECIFIED

REV. B DATE: 05/17/04 C.N. NO. 89815

DWG. NO. 63602 PRODUCT NO. Z121

**Z100****SPECIFICATION SHEET****15" [381] DIAMETER MAIN ROOF DRAIN**TAG RD

Dimensional Data (inches and [mm]) are Subject to Manufacturing Tolerances and Change Without Notice



A Pipe Size Inches / [mm]	Approx. Wt. Lbs. / [kg]	Dome Open Area Sq. In. / [sq cm]
2-3-4 [51-76-102]	26 [12]	148 [955]
5-6 [127-152]	27 [12]	
8 [203]	28 [13]	

**ENGINEERING SPECIFICATION:** ZURN Z100 15 [381] diameter roof drain. Dura-Coated cast iron body with combination membrane flashing clamp/gravel guard and Poly-Dome.**OPTIONS** (Check/specify appropriate options)**PIPE SIZE**

2 thru 6, 8 [50 thru 150,200]  
2 thru 6, 8 [50 thru 150,200]  
2 thru 6, 8 [50 thru 150,200]  
2,3,4 [50,75,100]

(Specify size/type) **OUTLET**

\_\_\_ IC Inside Caulk  
\_\_\_ IP Threaded  
\_\_\_ NH No-Hub  
\_\_\_ NL Neo-Loc

**E BODY HT. DIM.**

5 1/4 [133]  
3 3/4 [95]  
5 1/4 [133]  
4 5/8 [117]

**PREFIXES**

\_\_\_ Z D.C.C.I. Body with Poly-Dome\*  
☒ ZA D.C.C.I. Body with Aluminum Dome  
\_\_\_ ZC D.C.C.I. Body with Cast Iron Dome  
\_\_\_ ZRB D.C.C.I. Body with Plain Bronze Dome

**SUFFIXES**

___ -A Waterproof Flange	___ -G Galvanized Cast Iron
___ -AC Angular Underdeck Clamp	___ -GD Galvanized Cast Iron Dome (ZC Only)
___ -AR Acid Resistant Epoxy Coated Finish	<input checked="" type="checkbox"/> -R Roof Sump Receiver
___ -AW 3/4 [19] to 4 [102] Adj. Water Level Regulator	___ -SC Secondary Clamp Collar
___ -BS Bronze Mesh Screen Over Dome	___ -SE 3 3/4 [95] Slotted Extension - Inverted Roof
<input checked="" type="checkbox"/> -C Underdeck Clamp	___ -SSM Stainless Steel Mesh Screen Over Dome
___ -DP Top Set® Roof Deck Plate (Replaces both the -C and -R)	___ -TC Neo-LocTest CapGasket (2 [51] to 4 [102] N Bottom Outlet Only)
___ -DR Adjustable Drain Riser Extension Assembly 3-5/8" [92] to 7-1/4" [184]	___ -VP Vandal Proof Secured Top
___ -DX Dex-O-Tex Flange	___ -W Internal Water Dam (Specify 2 [51], 3 [76], 4 [100])
___ -E Static Extension 1 [25] thru 4 [102] (Specify Ht.)	___ -XJ Vertical Expansion Joint (See Z-190)
___ -EA Adjustable Extension Assembly 1 3/4 [44] thru 3 1/2 [89]	___ -84 Stainless Steel Perforated Gravel Guard
___ -EB Elevating Body Plate	___ -89 2 [51] High External Water Dam
___ -ES Static Extension with Secondary Clamp Collar Body	___ -90 90° Threaded Side Outlet Body
___ -FG Flush Grate (Replaces Dome Strainer)	

**REV. A    DATE: 05/17/04    C.N. NO. 89814****DWG. NO. 63600    PRODUCT NO. Z100**

\*REGULARLY FURNISHED UNLESS OTHERWISE SPECIFIED



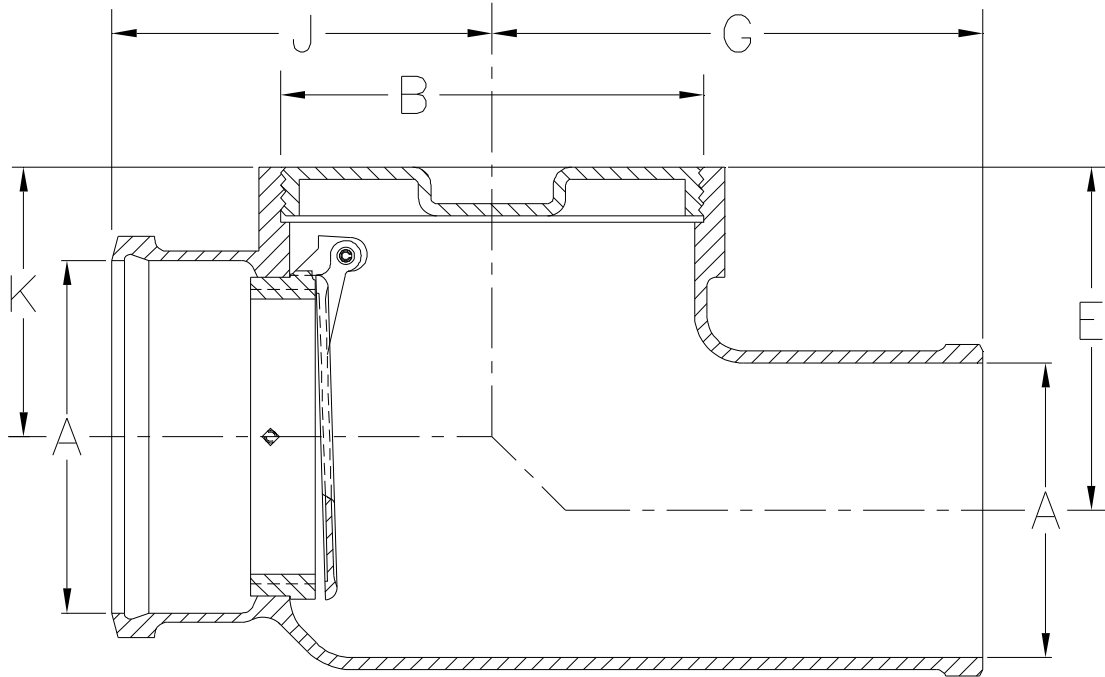
# Z1095

## BACKWATER VALVE FLAPPER TYPE

SPECIFICATION SHEET

TAG BWV

Dimensional Data (inches and [ mm ]) are Subject to Manufacturing Tolerances and Change Without Notice



Dimensions In Inches						Approx. Wt. Lbs. [kg]
Pipe Size		E	G	J	K	
A	B					
2 [52]	4 [102]	4-3/8 [111]	7 [178]	5 [127]	2-7/8 [73]	23 [10]
3 [76]	5 [127]	5-1/8 [130]	8 [203]	6 [152]	3-5/8 [92]	30 [14]
4 [102]	6 [152]	5-5/8 [143]	8-1/2 [216]	6-3/4 [171]	4-1/8 [105]	34 [15]
5 [127]	7 [178]	5-1/2 [140]	9-1/2 [241]	7-1/4 [184]	4 [102]	50 [23]
6 [152]	8 [203]	6 [156]	10 [254]	7-3/4 [197]	4-1/2 [114]	57 [26]
8 [203]	10 [254]	7-1/2 [190]	11-7/8 [302]	9-3/8 [238]	6 [152]	79 [36]
10 [254]	12 [305]		12-3/4 [324]	10-7/8 [276]	7 [178]	102 [46]

**ENGINEERING SPECIFICATION:** ZURN Z1095 Backwater Valve, Dura-Coated cast iron body, hub inlet and offset spigot outlet, bronze threaded cover, automatic PVC (3 [76] and 4 [102] sizes only) flapper type backwater valve with O-ring.

**CONNECTIONS** (Check/specify appropriate options)**PIPE SIZE**(Specify size) **CONNECTION**

2 thru 6, 8, 10 [52 thru 152, 203, 254]

\_\_\_\_ HB X SP Hub x Spigot

**PREFIXES**☒ Z D.C.C.I. Body\***SUFFIXES**☒ -BC Bolted Cover  
☒ -BV Bronze Flapper Valve (3 and 4 [76 thru 102] Sizes)  
\_\_\_\_ -G Galvanized Cast Iron

REV. E DATE: 11/01/10 C.N. NO. 120208

DWG. NO. 58902 PRODUCT NO. Z1095

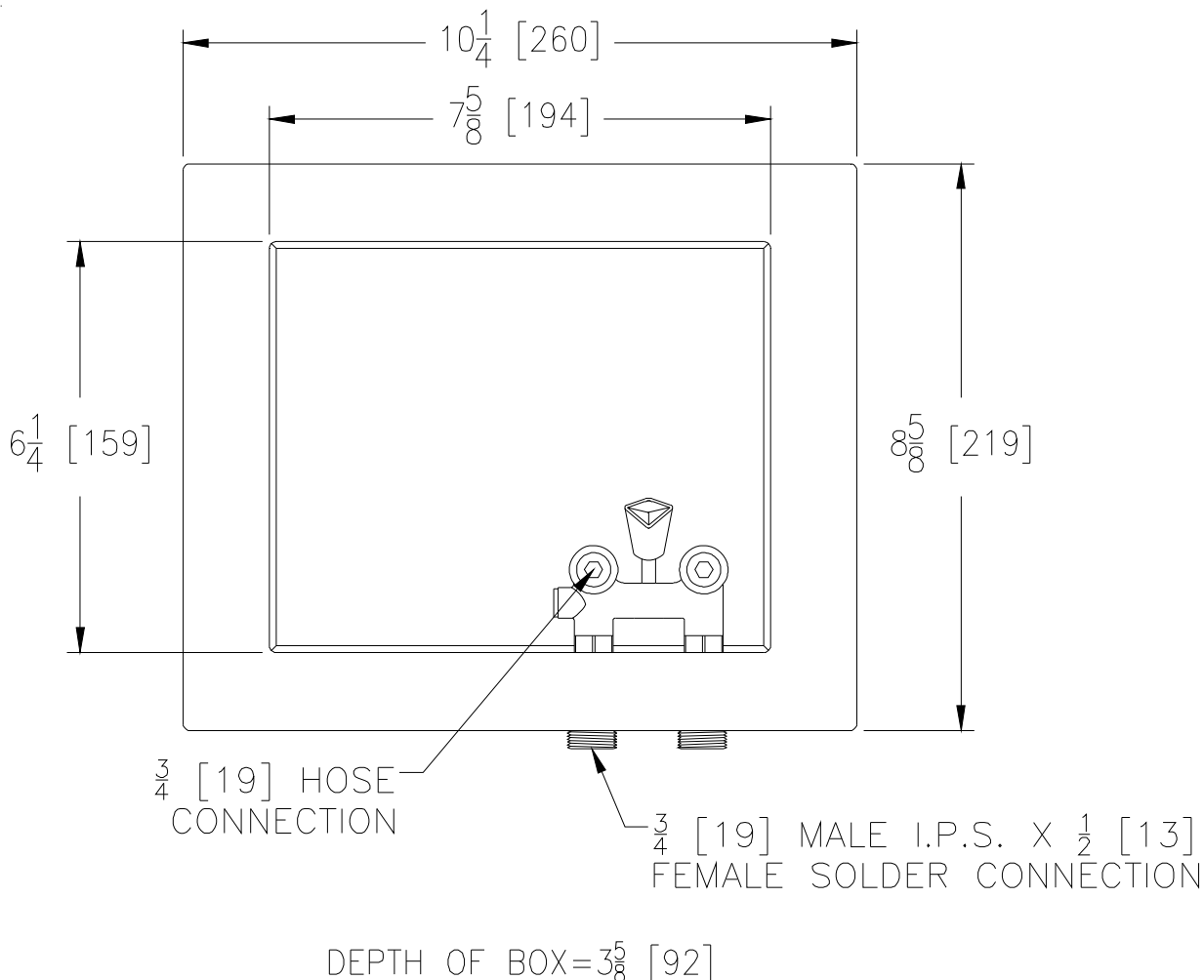
\*REGULARLY FURNISHED UNLESS OTHERWISE SPECIFIED

ZURN INDUSTRIES, LLC. ♦ SPECIFICATION DRAINAGE OPERATION ♦ 1801 Pittsburgh Ave. ♦ Erie, PA 16514

Phone: 814/455-0921 ♦ Fax: 814/454-7929 ♦ World Wide Web: www.zurn.com

In Canada: ZURN INDUSTRIES LIMITED ♦ 3544 Nashua Drive ♦ Mississauga, Ontario L4V1L2 ♦ Phone: 905/405-8272 Fax: 905/405-1292

Dimensional data (inches and [mm]) are subject to manufacturing tolerances and change without notice.



Model Number	Connections Inches [mm]	Approx. Wt. Lbs. [cm <sup>2</sup> ]
WM2961-34	$\frac{3}{4}$ [19] M.I.P. x $\frac{1}{2}$ [13] Solder Inlet	3 [1]

**ENGINEERING SPECIFICATION: ZURN WM2961**

Encased washing machine valve designed to improve overall appearance of the laundry room. Complete with single lever handle valve, heavy-duty mounting straps, knockouts for a right or left mounting, and a 1-1/2" [38mm] x 2" [51mm] tailpiece that adapts easily to either ABS or PVC standpipe.

**⚠ WARNING:** Cancer and Reproductive Harm - [www.P65Warnings.ca.gov](http://www.P65Warnings.ca.gov)

**⚠ ADVERTENCIA:** Cáncer y daño reproductivo - [www.P65Warnings.ca.gov](http://www.P65Warnings.ca.gov)

**⚠ AVERTISSEMENT:** Cancer et effets néfastes sur la reproduction - [www.P65Warnings.ca.gov](http://www.P65Warnings.ca.gov)

\*Regularly furnished unless otherwise specified.



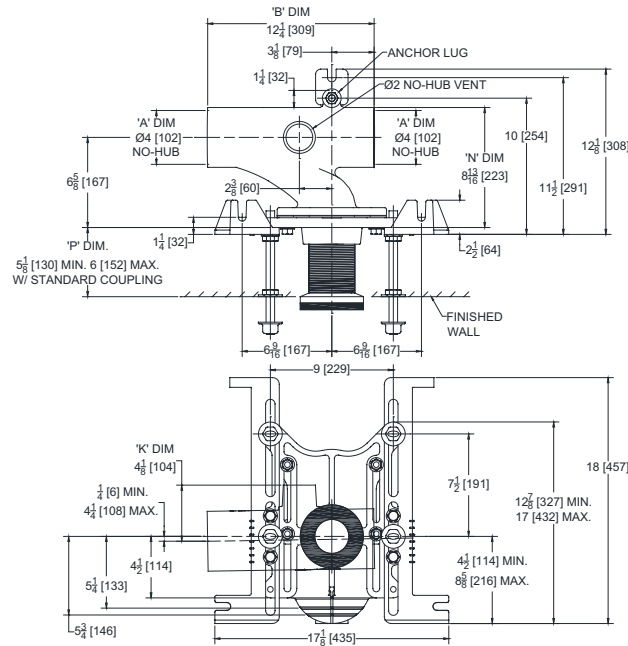
## Z1201-N\_4

EZCARRY® ADJUSTABLE HORIZONTAL HIGH PERFORMANCE  
SIPHON JET NO-HUB WATER CLOSET CARRIER SYSTEM

SPECIFICATION SHEET

TAG W-1 AND WH-1

Design and Dimensional Data (inches and [ mm ]) are Subject to Manufacturing Tolerances and Change Without Notice



Product Number	Approx. Wt. lbs [kg]
Z1201-NL4	58 [26]
Z1201-NR4	

### Note:

1. Z coupling, Min. 'P' Dim Obtainable=2 [51].EZ-Set™ Coupling, Min. 'P' Dim. Obtainable=4-1/4 [108] or 2-1/16 [52] for 12 [305] NPT.
2. Feet bolted to floor using min.1/2 [13] dia. anchors.
3. Rear anchor foot required for secure installation.

### Z1201-NR4 Illustrated

### ENGINEERING SPECIFICATION: ZURN Z1201-N\_4

EZCarry® horizontal siphon jet water closet carrier system with high performance waterway and 4" [102mm] no-hub connections. System includes Dura-Coated cast iron main fitting with hydro-mechanically optimized sweep and extended 2" [51mm] vent, adjustable gasketed faceplate, floor mounted pre-fab slotted foot supports with top anchoring pre-fab support base, heavy-duty 1/2" [13mm] rear anchor tie down, fixture bolts, trim, stud protectors, bonded "Neo-Seal" gasket, and corrosion resistant, adjustable 3" [76mm] dia. X 6" [152mm] coupling with integral test cap designed to increase flow velocity and line carry. EZCarry® system complies with the requirements of ASME A112.6.1M up to a 500 lbs [227 kg] static load rating

### OPTIONS (Check/specify appropriate options)

- ☐ Z1201-NL4 4 [102] No-Hub Left Hand Inlet with Flow to Right  
☐ Z1201-NR4 4 [102] No-Hub Right Hand Inlet with Flow to Left

### PREFIXES

- ☒ Z D.C.C.I. System with Zurn ZZ Adjustable Coupling\*  
☐ ZQ D.C.C.I. System with NPT Faceplate, Non-Adjustable Coupling

### SUFFIXES

- |   |  |
|---|--|
| <input type="checkbox"/> -A Auxiliary Support Assembly (For 'P' Dim. Greater than 18 [457])   | <input type="checkbox"/> -G Galvanized Cast Iron   |
| <input type="checkbox"/> -CC Corrosion Resistant Cast Iron Coupling (2-1/4 [57] to 12 [305])  | <input type="checkbox"/> -JC 2 [51] Auxiliary Inlet with 1/8 Bend                          |
| <input type="checkbox"/> -CE EZ-Set™ Coupling (NPSM 6 [152] ,12 [305] or custom) (NPT 12 [305] or custom)                             | <input type="checkbox"/> -M Auxiliary Foot Support (for 'P' Dim. 7 thru 18 [178 thru 457]) |
| <input type="checkbox"/> -CL Custom Length Standard Coupling with Integral TestCap (Specify Length 4, 8, 10, 12 [102, 203, 254, 305]) | <input type="checkbox"/> -RYK17 One Piece Unistrut Pre-Fab Foot                            |
| <input type="checkbox"/> -CS 2-1/4 [57] Polymer Coupling with Integral Test Cap   | <input type="checkbox"/> -VP Vandal-Proof Trim   |
| <input type="checkbox"/> -F Floor Mounted, Back Outlet Fixture Support  | <input type="checkbox"/> -X2 2 [51] Carrier Foot Extension Assembly                        |
|   | <input type="checkbox"/> -X3 3 [76] Carrier Foot Extension Assembly                        |
|   | <input type="checkbox"/> -45 Finishing Frame for Siphon Jet System                         |
|   | <input type="checkbox"/> -50 Flush Valve Supply Support for Water Closets                  |

\* Regularly furnished unless otherwise specified.

⚠ **WARNING:** Cancer and Reproductive Harm - [www.P65Warnings.ca.gov](http://www.P65Warnings.ca.gov)

⚠ **ADVERTENCIA:** Cáncer y daño reproductivo - [www.P65Warnings.ca.gov](http://www.P65Warnings.ca.gov)

⚠ **AVERTISSEMENT:** Cancer et effets néfastes sur la reproduction - [www.P65Warnings.ca.gov](http://www.P65Warnings.ca.gov)

Zurn Industries, LLC | Specification Drainage Operation  
1801 Pittsburgh Avenue, Erie, PA USA 16502, Ph. 855.663.9876

In Canada | Zurn Industries Limited  
7900 Goreway Drive, Unit 10, Brampton, Ontario L6T 5W6, Ph. 877.892.5216

[www.zurn.com](http://www.zurn.com)

Rev. M  
Date: 01/05/23  
C.N. No. 144897  
Patent [zurn.com/patents](http://zurn.com/patents)  
Prod. | Dwg. No. Z1201-N\_4

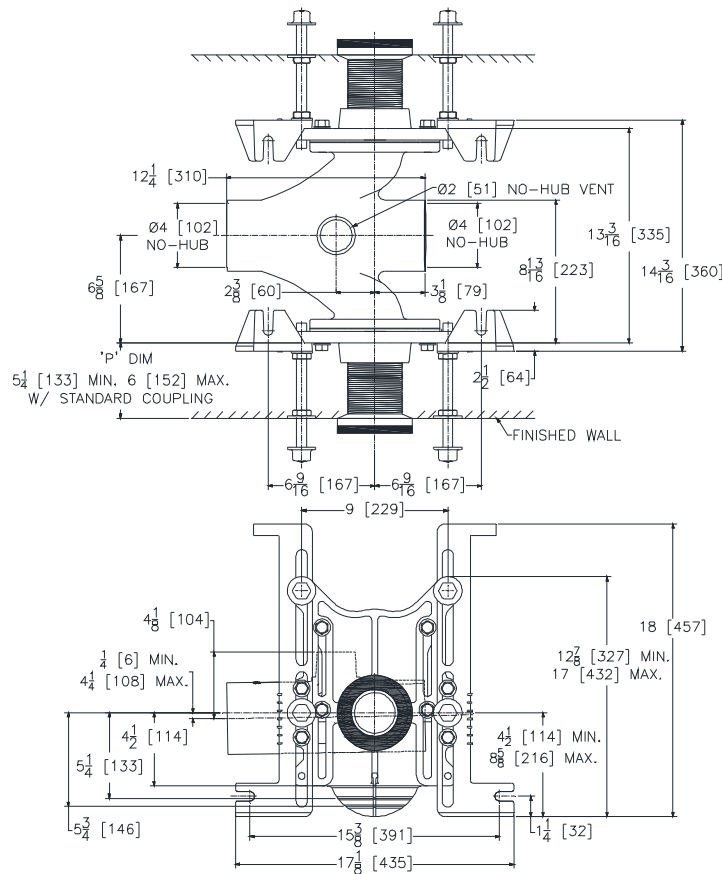
# Z1201-ND4

# EZCARRY® ADJUSTABLE HORIZONTAL HIGH PERFORMANCE BACK-TO-BACK SIPHON JET NO-HUB WATER CLOSET CARRIER SYSTEM

## SPECIFICATION SHEET

TAG W-1 AND WH-1

Dimensional Data (inches and [mm]) are Subject to Manufacturing Tolerances and Change Without Notice



Product Number	Approx. Wt. lbs [kg]
Z1201-ND4	104 [47]

Note:

1. Z coupling, Min. 'P' Dim.  
Obtainable=2 [51].  
EZ-Set™ Coupling, Min. 'P' Dim.  
Obtainable=4-1/4 [108] or  
2-1/16 [52] for 12 [305] NPT.
2. Feet bolted to floor using min.  
1/2 [13] dia. anchors.

### ENGINEERING SPECIFICATION: ZURN Z1201-ND4

EZCarry® horizontal siphon jet water closet carrier system with high performance waterway and 4" [102mm] no-hub connections. System includes Dura-Coated cast iron double main fitting with hydro-mechanically optimized sweep and extended 2" [51mm] vent, adjustable gasketed faceplates, floor mounted pre-fab slotted foot supports with top anchoring pre-fab support base, fixture bolts, trim, stud protectors, bonded "Neo-Seal" gaskets, and corrosion resistant, adjustable 3" [76mm] dia. X 6" [152mm] couplings with integral test caps designed to increase flow velocity and line carry. EZCarry® system complies with the requirements of ASME A112.6.1M up to a 500 lbs [227 kg] static load rating.

**OPTIONS** (Check/specify appropriate options)

Z1201-ND4 4 [102] No-Hub Back-to-Back Inlet (Double)

## PREFIXES

☒ Z D.C.C.I. System with Zurn ZZ Adjustable Coupling\*

☐ ZQ D.C.C.I. System with NPT Faceplate, Non-Adjustable Coupling

## SUFFIXES

___-A	Auxiliary Support Assembly (For 'P' Dim. Greater than 18 [457])	___-F	Floor Mounted, Back Outlet Fixture Support
___-CC	Corrosion Resistant Cast Iron Coupling (2-1/4 [57] to 12 [305])	___-G	Galvanized Cast Iron
___-CE	EZ-Set™ Coupling (NPSM 6 [152] ,12 [305] or custom) (NPT 12 [305] or custom)	___-M	Auxiliary Foot Support (for 'P' Dim. 7 thru 18 [178 thru 457])
___-CL	Custom Length Standard Coupling with Integral Test Cap (Specify Length 4, 8, 10, 12 [102, 203, 254, 305])	___-RYK	Unistrut Pre-Fab Foot Support
___-CS	2-1/4 [57] Polymer Coupling with Integral Test Cap	___-VP	Vandal-Proof Trim
		___-45	Finishing Frame for Siphon Jet System
		___-50	Flush Valve Supply Support for Water Closets

\* Regularly furnished unless otherwise specified.

**Zurn Industries, LLC | Specification Drainage Operation**  
1801 Pittsburgh Avenue, Erie, PA U.S.A. 16502 · Ph. 855-663-9876, Fax 814-454-7929  
In Canada | **Zurn Industries Limited**  
3544 Nashua Drive, Mississauga, Ontario L4V 1L2 · Ph. 905-405-8272, Fax 905-405-1292  
[www.zurn.com](http://www.zurn.com)

Rev. K  
Date: 09/19/18  
C.N. No. 140612  
Prod. | Dwg. No. Z1201-ND4





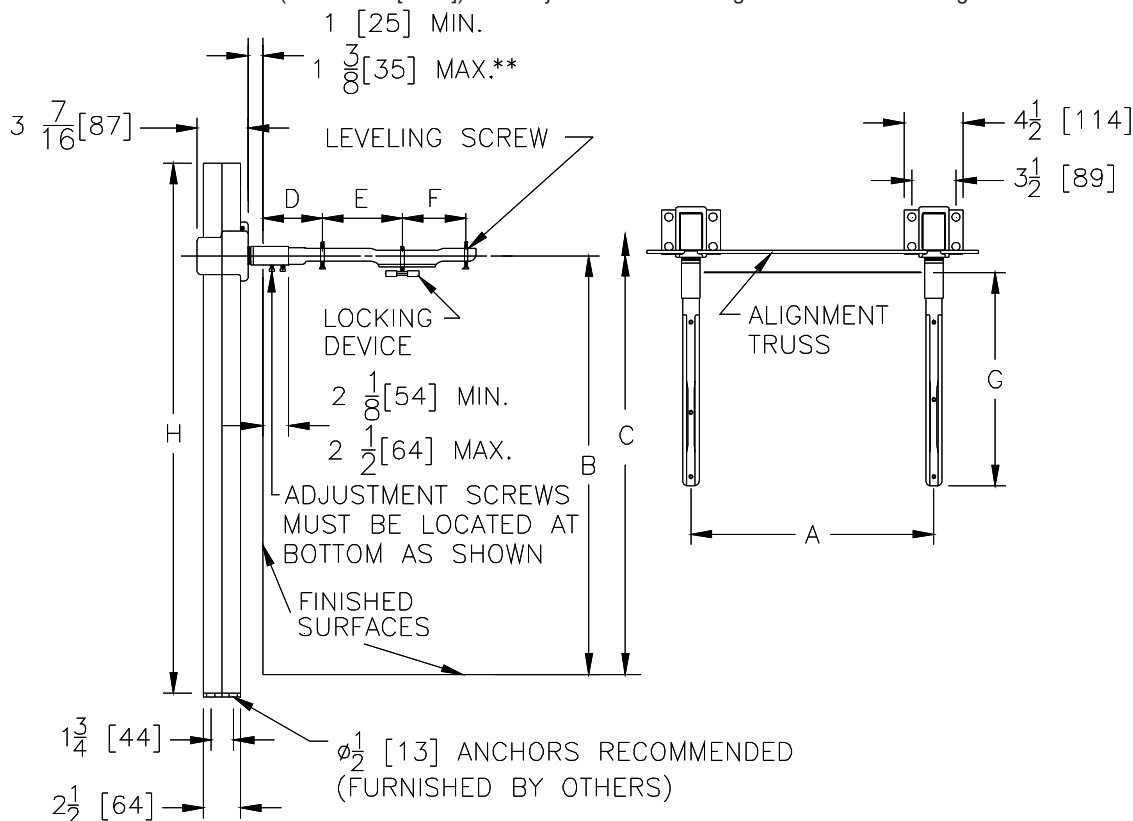
# Z1231

## CONCEALED ARM SYSTEM WALL LAVATORIES

SPECIFICATION SHEET

TAG LH-2

Dimensional Data (inches and [ mm ]) are Subject to Manufacturing Tolerances and Change Without Notice



\*\* WITH STANDARD SLEEVE LENGTH OF 4 [102]

Product No.	Approx. Wt. Lbs. [kg]
Z1231	45 [20]

**ENGINEERING SPECIFICATION:** ZURN Z1231 Lavatory support system with concealed arms. Complete with Dura-Coated rectangular steel uprights with welded feet, cast iron adjustable headers, concealed arms, steel sleeves, alignment truss, and mounting fasteners.

**OPTIONS** (Check/specify appropriate options)**PREFIXES**☒ Z Dura-Coated System with Concealed Arms\***SUFFIXES**

- ☐ -AL Adapter Lug
- ☐ -CB Carrier Bank
- ☐ -CU Floor to Ceiling Upright (Specify Height Required)
- ☐ -D Back to Back System
- ☐ -E2 Concealed Arm Escutcheons 2 [51] Long
- ☐ -E4 Concealed Arm Escutcheons 4 [102] Long
- ☐ -E6 Concealed Arm Escutcheons 6 [152] Long
- ☐ -SL Sleeve Length Over 4 [102] (Specify Length)
- ☐ -WS Wall Support Valve Plate (Specify Valve Name and Number)
- ☐ -79 Paraplegic Rough-in

Note: Dimensional data for letter dimensions depends upon fixture type and manufacturer. See Zurn Carrier/Fixture Rough-In information at [www.zurn.com](http://www.zurn.com) for specific rough-in dimensions

\*REGULARLY FURNISHED UNLESS OTHERWISE SPECIFIED

REV. I DATE: 11/29/10 C.N. NO. 120530

DWG. NO. 58855 PRODUCT NO. Z1231

ZURN INDUSTRIES, LLC. ♦ SPECIFICATION DRAINAGE OPERATION ♦ 1801 Pittsburgh Ave. ♦ Erie, PA 16514

Phone: 814/455-0921 ♦ Fax: 814/454-7929 ♦ World Wide Web: [www.zurn.com](http://www.zurn.com)

In Canada: ZURN INDUSTRIES LIMITED ♦ 3544 Nashua Drive ♦ Mississauga, Ontario L4V1L2 ♦ Phone: 905/405-8272 Fax: 905/405-1292



# Z1221

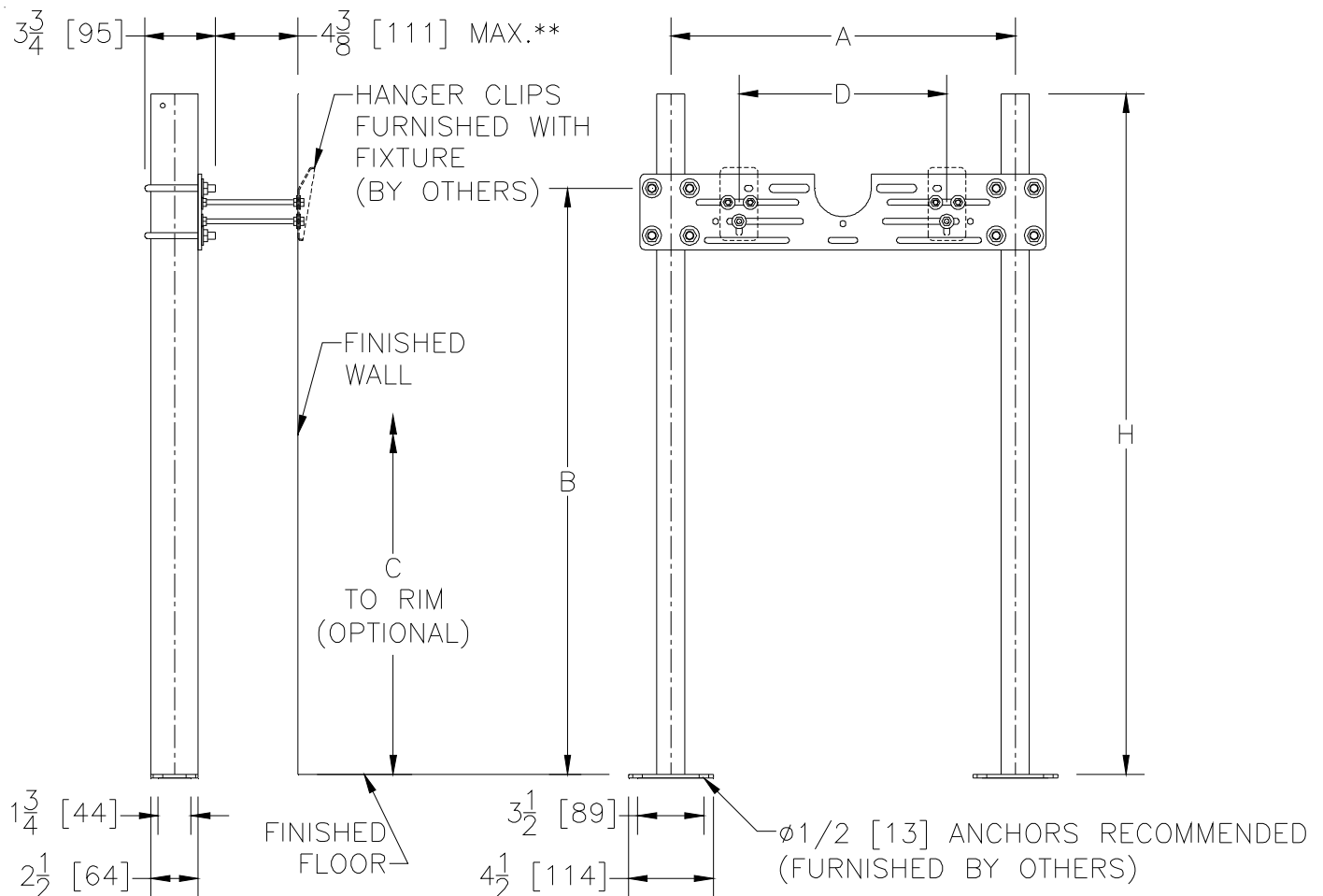
## PLATE TYPE SYSTEM

### WALL URINALS

SPECIFICATION SHEET

TAG WF

Dimensional Data (inches and [ mm ]) are Subject to Manufacturing Tolerances and Change Without Notice



\*\* WITH STANDARD STUD LENGTH OF 6 [152]

Product No.	Approx. Wt. Lbs. [kg]
Z1221	50 [23]

**ENGINEERING SPECIFICATION:** ZURN Z1221 Wall urinal support system with top support plate. Complete with Dura-Coated rectangular steel uprights with welded feet, adjustable support plate, and mounting fasteners.

**OPTIONS** (Check/specify appropriate options)**PREFIXES**☒ Z Dura-Coated System with Universal Plate\***SUFFIXES**

☐ -CB Carrier Bank  
☐ -CU Floor to Ceiling Upright  
☐ -D Back to Back System  
☐ -EZ Easy to Install Assembly

Note: Dimensional data for letter dimensions depends upon fixture type and manufacturer. See Zurn Carrier/Fixture Rough-In Information at [www.zurn.com](http://www.zurn.com) for specific rough-in dimensions.

☐ -SL Stud Length Greater Than 6 [152] (Specify Length)  
☐ -58 Flush Valve Supply Support

\*REGULARLY FURNISHED UNLESS OTHERWISE SPECIFIED

REV. E DATE: 11/4/10 C.N. NO. 120243

DWG. NO. 58849 PRODUCT NO. Z1221

ZURN INDUSTRIES, LLC ♦ SPECIFICATION DRAINAGE OPERATION ♦ 1801 Pittsburgh Ave. ♦ Erie, PA 16514

Phone: 814/455-0921 ♦ Fax: 814/454-7929 ♦ World Wide Web: [www.zurn.com](http://www.zurn.com)

In Canada: ZURN INDUSTRIES LIMITED ♦ 3544 Nashua Drive ♦ Mississauga, Ontario L4V1L2 ♦ Phone: 905/405-8272 Fax: 905/405-1292



# Z1225

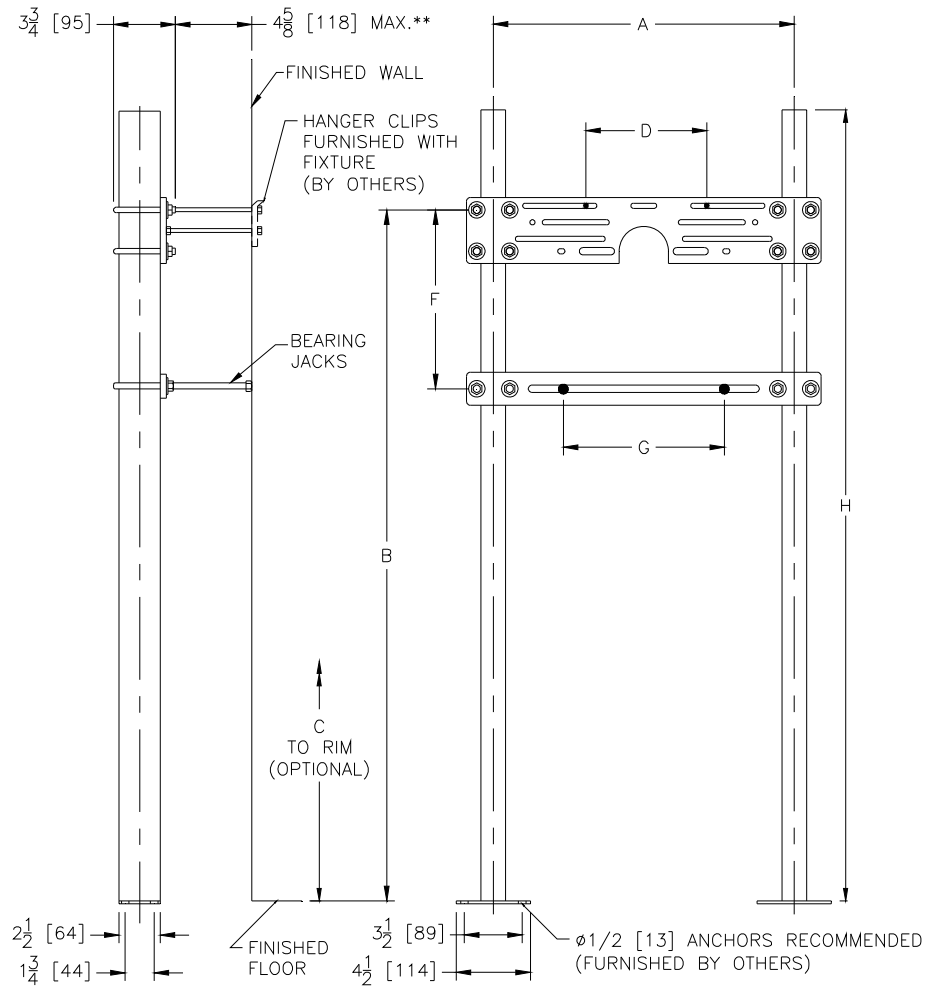
## PLATE TYPE SYSTEM

### WATER COOLERS

SPECIFICATION SHEET

TAG BFS

Dimensional Data (inches and [ mm ]) are Subject to Manufacturing Tolerances and Change Without Notice



\*\* WITH STANDARD STUD LENGTH OF 6 [152].

Product No.	Approx. Wt. Lbs. [kg]
Z1225	49 [22]

**ENGINEERING SPECIFICATION:** ZURN Z1225 Water cooler support system with top and bottom plates. Complete with Dura-Coated rectangular steel uprights with welded feet, adjustable support plates, and mounting fasteners.

Note: Dimensional data for letter dimensions depends upon fixture type and manufacturer. See Zurn Carrier/Fixture Rough-In information at [www.zurn.com](http://www.zurn.com) for specific rough-in dimensions

#### OPTIONS (Check/specify appropriate options)

#### PREFIXES

☒ Z Dura-Coated System with Universal Plate\*

#### SUFFIXES

- ☐ -BL Bi-Level Cooler Support
- ☐ -BR Bracket Support
- ☐ -CB Carrier Bank
- ☐ -D Back to Back System
- ☐ -EZ Easy to Install Assembly
- ☐ -L2 Less Bearing Plate
- ☐ -SL Stud Length Over 6 [152] (Specify Length)

\*REGULARLY FURNISHED UNLESS OTHERWISE SPECIFIED

REV. E DATE: 11/4/10 C.N. NO. 120512

DWG. NO. 58853 PRODUCT NO. Z1225

ZURN INDUSTRIES, LLC. ♦ SPECIFICATION DRAINAGE OPERATION ♦ 1801 Pittsburgh Ave. ♦ Erie, PA 16514

Phone: 814/455-0921 ♦ Fax: 814/454-7929 ♦ World Wide Web: [www.zurn.com](http://www.zurn.com)

In Canada: ZURN INDUSTRIES LIMITED ♦ 3544 Nashua Drive ♦ Mississauga, Ontario L4V1L2 ♦ Phone: 905/405-8272 Fax: 905/405-1292