

GPY+ Associates Engineering Inc.

MECHANICAL SHOP DRAWINGS

PROJECT: York Region Administrative
Centre – Interior Fit-up
Package 'D'

17250 Yonge Street,
Newmarket, Ontario
L3R 0T5

Reviewed ☐
Not Reviewed ☐

Reviewed as Modified ☒
Revise and Resubmit ☐

This review is for conformance with the general design intent only and does not change the intent of the Contract Documents. Responsibility for errors or omissions in the shop drawings, details, co-ordination and dimensioning remains solely with the Contractor.

GPY+ Associates Engineering Inc.

Name: Grant Youdelis

Date: December 16, 2024

PROJECT NO.: GPY-9920

Shop Drawing No.: M-6

Product: Finned Tube Radiation

Supplier: E.H. Price/ Rittling

Comments:

1. Wall fin radiators WF-1 & WF-2: **Acceptable, Ensure all required accessories & valves are provided as per piping schematic on mechanical drawings.**
2. Wall fin radiators enclosure cabinet: **Acceptable, Ensure site measurements are provided to supplier for a continuous run along curved perimeter wall. Provide end caps on enclosure near wall where the enclosure meets the rain water leader/ altos partition. Enclosure shall be accessible at all times. Cabinet lengths along curved wall to be site measured to avoid gaps between cabinet and wall as per drawings. Contractor to ensure mounting channel and bracket are properly secured to the wall. Provide locking bottom mounting clip for enclosure.**
3. For valve locations, ensure 'AS' access enclosure shall come without grilles. Access panel shall be provided for control valve location.
4. Wall fin enclosure shall be color white.
5. Contractor to ensure all heating water supply & return risers are within enclosure and all valves shall be installed within the enclosure and easily accessible.
6. Contractor to create a mock-up section of the Wall fin radiator configuration c/w wall finned tube element, all valves, vent, drain, brackets & removable enclosure installed for York Region PM & consultants review before proceeding with the installation.



SUBMITTAL

TO: GPY + Associates Engineering Inc. – ATTN: Sherwin Reyes
PROJECT: York Region, Administration Building Package D Renovations
ADDRESS: 17250 Yonge Street, Newmarket, ON
INCLUDED: Mechanical Shop Drawing – Wall Fin Heaters
SPEC DIV: 23 50 00

From: Trisect Construction Corporation
7-4020A Sladeview Crescent
Mississauga, ON L5L 6B1
Tom Butkovic / Ivan Lulic / Jay Cowie

The shop drawings included below have been:

- ☒ REVIEWED
- ☐ REVIEWED AS NOTED
- ☐ RESUBMIT
- ☐ REJECTED

Review of this submission is for compliance with the general intent of the contract. This review does not relieve the Sub-Contractor, Trade Contractor, Supplier or Manufacturer of the responsibility of meeting all requirements of the contract documents. Any deviation from the contract documents initiated by the Sub-Contractor, Trade Contractor, Supplier or Manufacturer shall be at his sole risk and responsibility. QUANTITIES AND DETAIL DIMENSIONS ARE THE SUBCONTRACTORS OR SUPPLIERS' RESPONSIBILITY. VERIFY THE DATA WITH FIELD DIMENSIONS AND CONDITIONS.

Per: Tom Butkovic	Dated: November 28/2024
Final review to be received by: G. Bruce Stratton Architects	





54 Audia Court, Unit 2
Concord, ON L4K 3N5
(905)-738-1400

Submittal 24-277-006

PROJECT NAME	PROJECT ADDRESS	DATE SUBMITTED
YORK REGION VARIOUS PROJECTS 24-277	17250 Young Street Newmarket, ON	Nov 27, 2024

TO	FROM
Tom Butkovic	PAUL LEDDY
COMPANY	COMPANY
TRISECT CONSTRUCTION	Consult Mechanical Inc.
EMAIL	EMAIL
tbutkovic@trisectionconstruction.com	paul.l@consultmechanical.com
ADDRESS	ADDRESS
4020A SLADEVIEW cRESCENT, UNIT 7 MISSISSAUGA, ON L5L 6B1 JOB: 1300 INSLINGTON SUITE 103	54 Audia Court, Unit 2 Concord, ON L4K 3N5

Title

Wall Fin Heaters

Description

Tag WF-1/2 Wallfin Heaters Manufacturer Zehnder Rittling

Package Items

SPEC	SUBSECTION	ITEM	TYPE
M101	M101	Wallfin Heater Schedule	Shop Drawings



Mechanical Sales

571 Chrislea Rd, Unit 3, Woodbridge, Ontario, L4L 8A2; Tel: 416 888 7814; Email: bsolaimani@ehpricesales.com

SUBMITTALS – Wall Fins

Project	:	York Admin - Second, Third, Fourth Floor Hydronics
Shipping Address	:	17250 Yonge Street Newmarket, ON L3Y 4W5
Mech. Consultant	:	GPY Associates Engineering Inc.
Customer	:	Consult Mechanical
Salesperson	:	Bijan Solaimani
Price Job Number	:	PTS2404026
Revision Number	:	Rev. 0
Equipment	:	WF-1 & WF-2
Specification Section	:	
Submittal Date	:	November 27, 2024
Expected Delivery	:	10 to 12 Weeks Upon Approved Shop Drawings

Rittling Architectural Enclosures

Catalog





Model **Copper-Aluminum**

Project: York Admin 3rd

Tag: WF-1, 2

Qty	Coil Config	Rows of Element	Min. Installed Height
1	Hot Water	2	24 inches

General Information

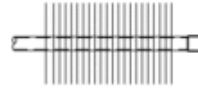
Altitude:	0	Feet
Tube Diameter:	3/4" TUBE	
Fin Size:	4-1/4" X 4-1/4" FIN	
Fin Spacing:	48 FINS PER FOOT	
Length of Active Element:	10	Feet

Enclosure General Information

Model:	SIBG	
Depth:	5 3/8" D	
Height:	20" H	
Bracket Type:	Hot water	
Minimum Installed Height:	24	inches
Floor to Top of Enclosure:	24	inches

Hot Water Heat

Element Output:	943.8	Btuh/Ft
Entering Air Temperature:	65.0	°F
Entering Fluid Temperature:	140.0	°F
Leaving Fluid Temperature:	120.0	°F
Fluid ΔT:	20.0	°F
Fluid Pressure Drop:	0.3	ft. H2O/ 10ft
Fluid Type:	Water	
Glycol %:	0	



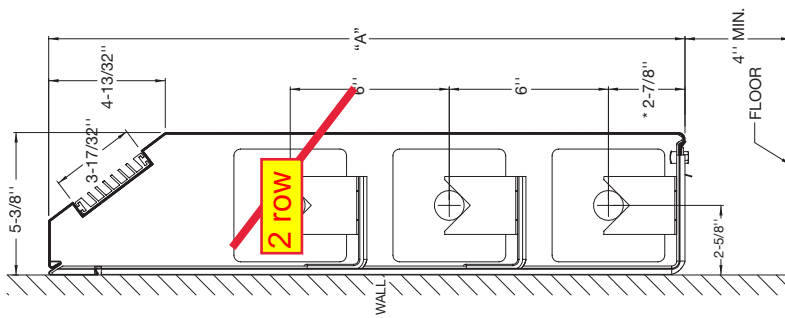
COPPER TUBE-ALUMINUM FIN



SIBG - SLOPE TOP IBG OUTLET

The results reported herein are based on testing by Zehnder Rittling. Variations in the installation and operational environment may alter performance. Zehnder Rittling disclaims all warranties, express and implied, that the performance will be as reported, including the warranty of merchantability and fitness for purpose. Continuous research and development may result in a change to an appliances design and specifications, which Zehnder Rittling may change without notice

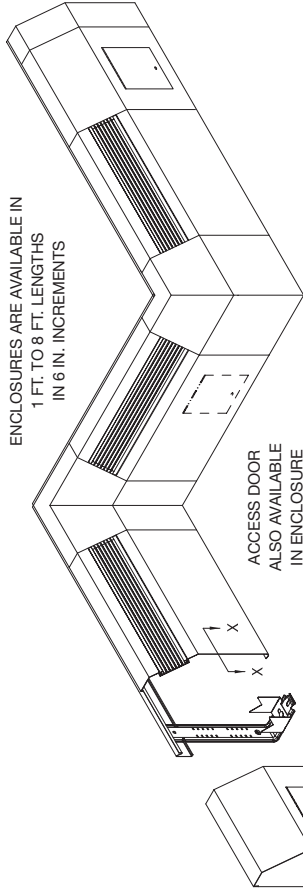
zehnder
Rittling



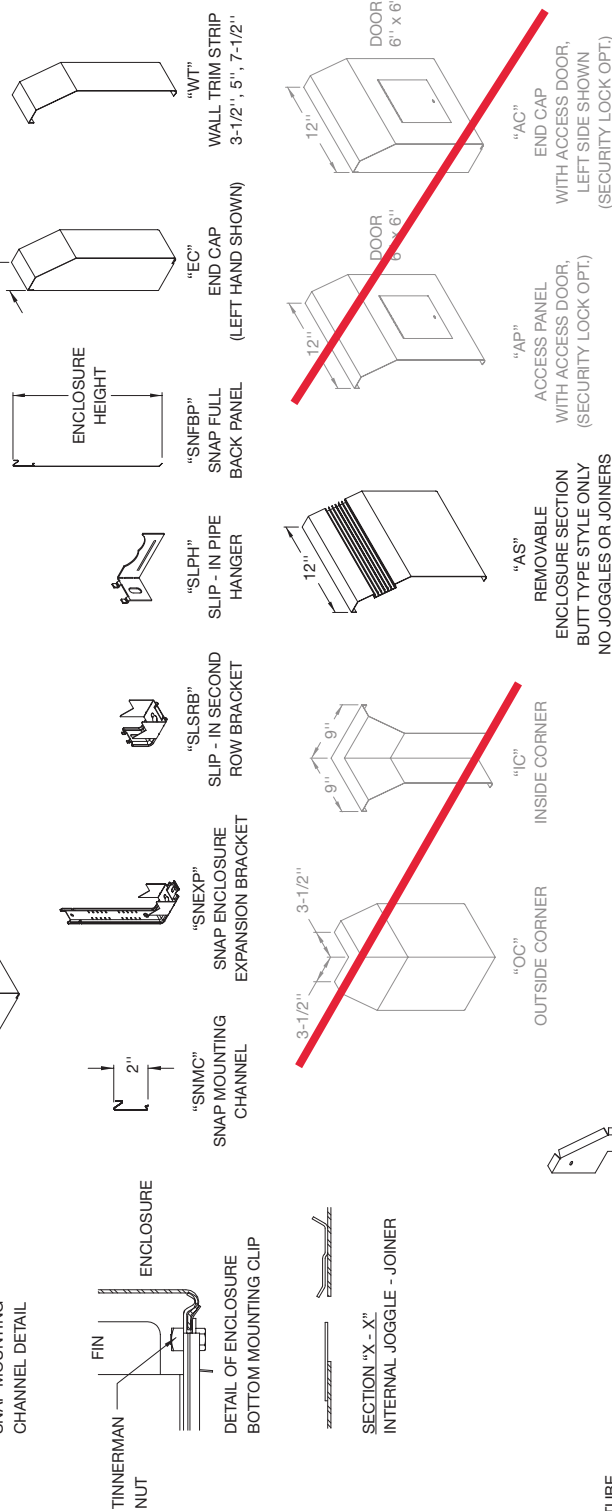
* CENTERLINES BASED ON 1" COPPER TUBE

MODEL	PIPE SIZE		FIN SIZE	A
	STEEL	COPPER		
SIBG5	N/A	3/4", 1", 1-1/4"	2-3/4" x 4"	14"
	1", 1-1/4"	3/4", 1", 1-1/4"	3-1/4", x 3-1/4"	20"
	1", 1-1/4", 2"	3/4", 1", 1-1/4"	4-1/4" x 4-1/4"	24"

ENCLOSURES ARE AVAILABLE IN
1 FT. TO 8 FT. LENGTHS
IN 6 IN. INCREMENTS



ACCESSORIES



NOTE:

- 1) ALL ACCESSORIES OVERLAP (EXCEPT AS NOTED)
- 2) BUTT TYPE (INTERLOCKING) STYLE OPTIONAL (EXCEPT AS NOTED)



CONTRACTOR	ELEMENT				
ARCHITECT	RATING	BTU	A.W.T.	E.A.T.	
ENGINEER	BACKPLATE	FULL	PARTIAL		
REPRESENTATIVE	ENCL. GAUGE	MATERIAL			
LOCATION	COLOR	DAMPER			

ZEHNDER RITTLING 100 RITTLING BLVD. • BUFFALO, NY USA 14220	
JOB:	
ENCLOSURE MODEL: SIBG5	
DATE: January 2011	DWG.NO.: SIBG5

Sloped top enclosures

SBG5/SIBG5, SBGVL5/SIBGVL5

Features

Rittling's Sloped Top Bargrille Enclosure provide strong contemporary styling and high output with a depth of 5-3/8".

Enclosure

- 16-gauge cold rolled steel, phosphatized with painted finish
- 1'-8' lengths in 6" increments
- Powder coated finish in decorator colors available
- 20" standard heights

Copper/Aluminum Element

- Tube: 3/4"
- Fin: 4-1/4" x 4-1/4"
- 1' to 12' lengths in 6" increments

Mounting

- Snap mounting channel
- 4' or 8' lengths

Joints

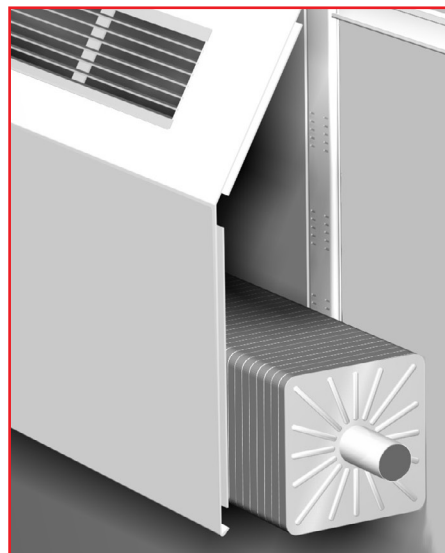
- Internal joggle joiners provide hairline joints without any external fasteners

Grille

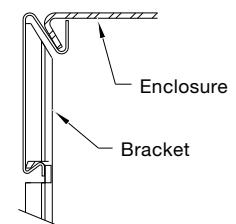
- SIBG: heavy-duty aluminum extrusion, R-204 clear anodized finish, 15° grille deflection, pencil proof

Hangers

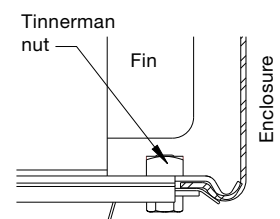
- Self-gauging, snap-fit, expansion cradle with positive-locking, bottom-mounting clip provide easy installation as well as security
- 16-gauge galvanized steel
- Slide cradle will accommodate 1-3/4" linear expansion for quiet operation.
- Second row bracket, slip-in or wall mounted. Used for multiple tiers of element
- Slip-in pipe hanger or wall pipe hanger for use with bare tube supply and return pipes
- See charts on pages 69-71 for available combinations



Cutaway view of SIBG5 enclosure showing 4-1/4" x 4-1/4" fin configuration.



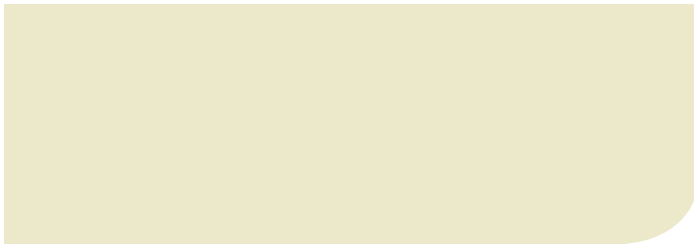
Mounting channel detail



Positive locking bottom mounting clip detail

Standard Colors

zehnder



Ivory



Gray



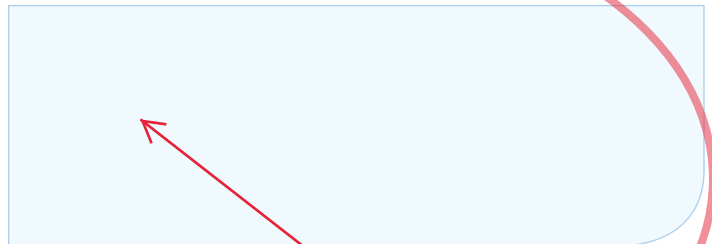
Beige



Dark Gray



Bronze



White

Confirm White

Pricing for standard colors varies by product and color, refer to price lists for detailed information.

Electronic file is for reference only, subject to the calibration of each individual monitor it is viewed on. Contact the factory for a printed color chart to obtain an accurate representation of standard colors.

Notes

- Slight color variation may exist between actual finish and color chips. All colors are supplied in semi-gloss.
- Variation in color and gloss may occur in the manufacturing process.
- Custom color matching is available at additional cost. Metallic colors are not available.
- All products with a prime finish must have a field-applied topcoat for a consistent color.



Mechanical Sales

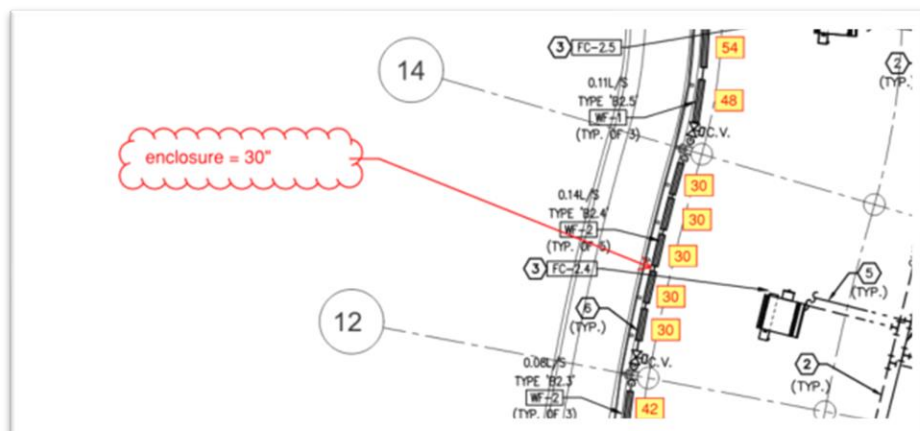
571 Chrislea Rd, Unit 3, Woodbridge, Ontario, L4L 8A2; Tel: 647 670 9090; Email: Bsolaimani@ehpricesales.com

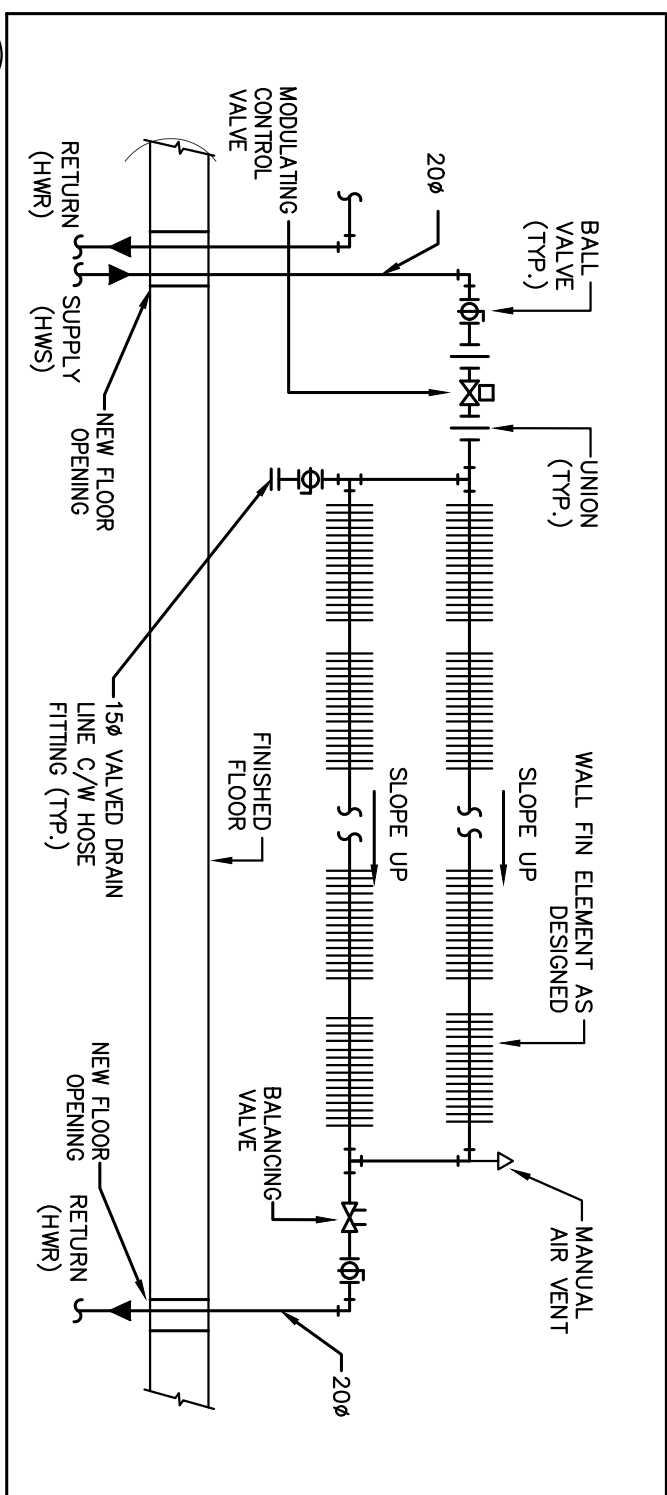
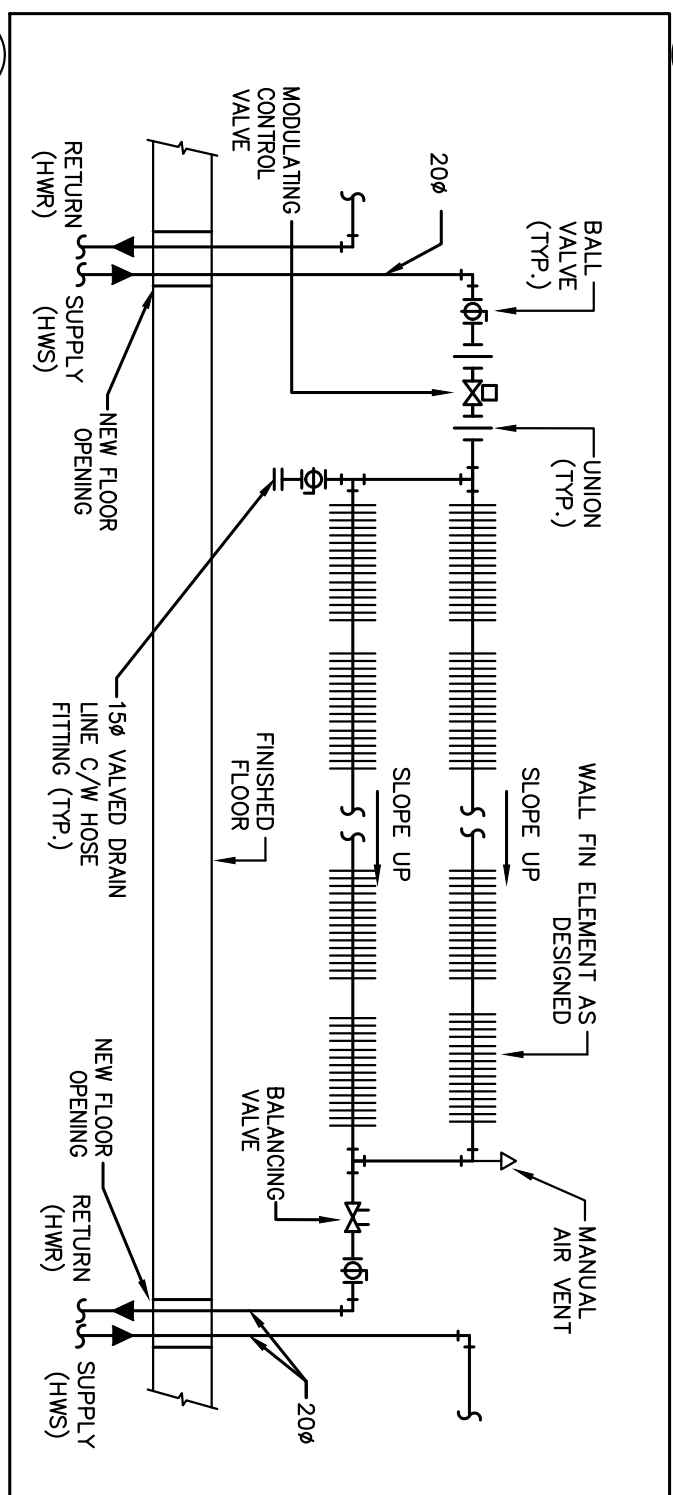
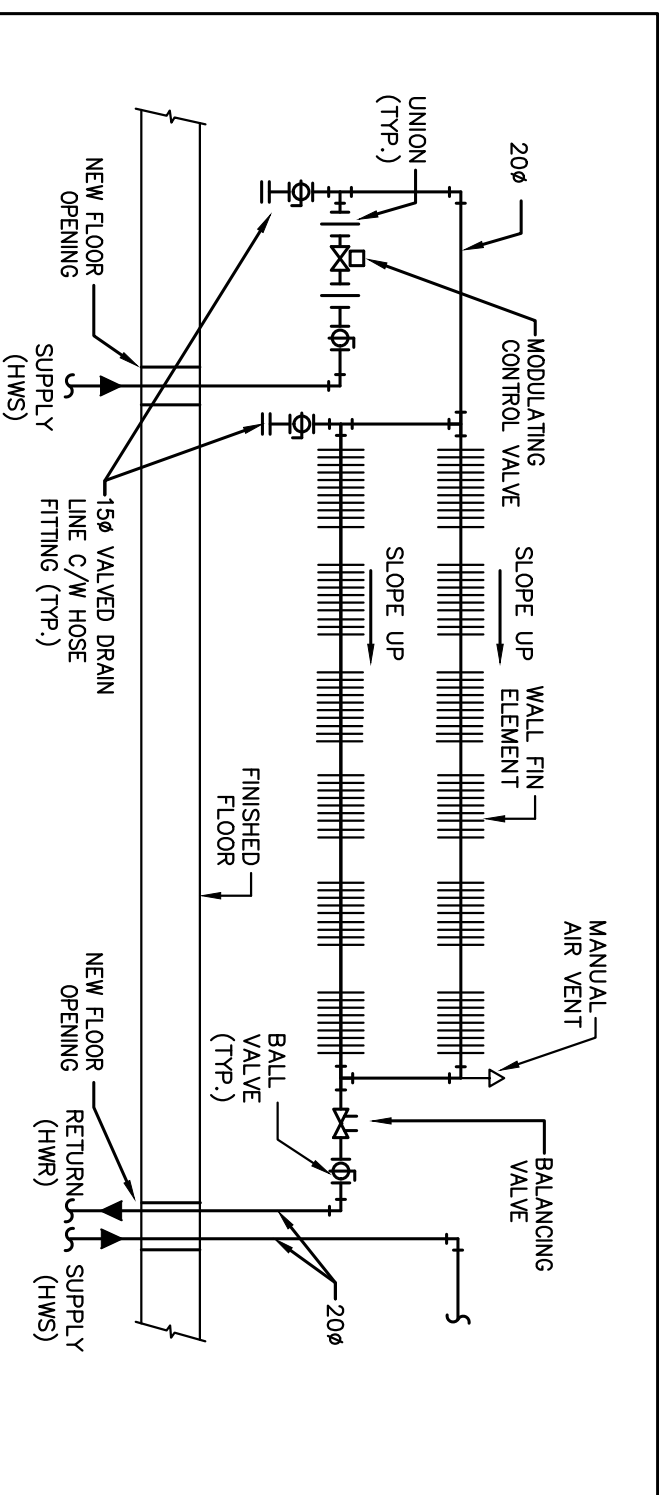
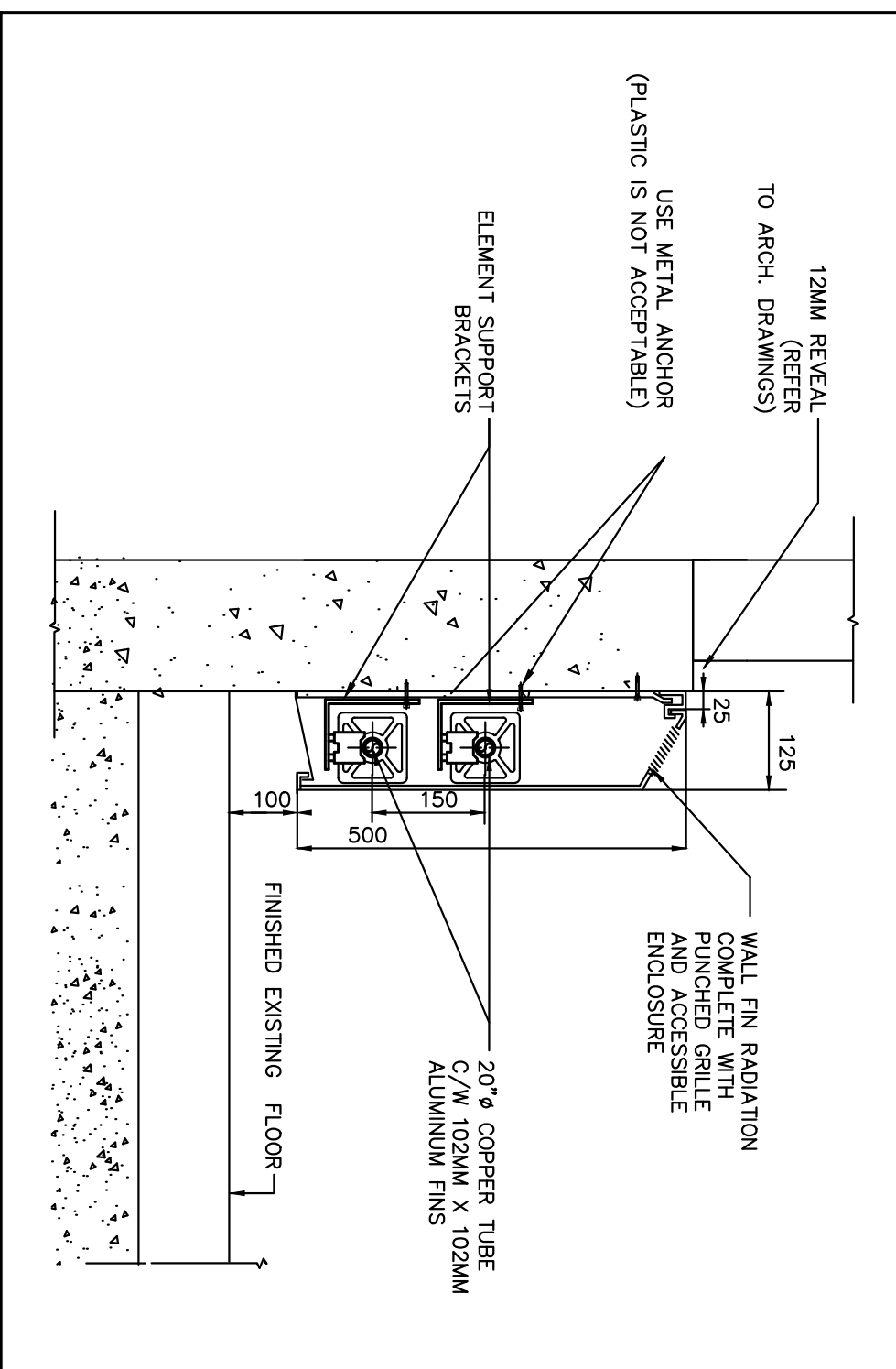
SUBMITTALS – WALL FIN

Project	:	York Admin Centre, RFTC-652-22
Shipping Address	:	17250 Yonge St Toronto, Ontario, L3Y 4W5
Mech. Consultant	:	GPY
Customer	:	Consult Mechanical
Price Salesperson	:	Bijan Solaimani
Price Job Number	:	PTS2404026
Revision Number	:	rev1
Equipment	:	WF-1, 2
Specification Section	:	N/A
Submittal Date	:	Dec 17, 2024
Expected Delivery	:	3-4 weeks after approved release for fins 6-8 weeks after approved release for enclosure

There are 11 wall fins (enclosures) as following marked on the drawings to be confirmed by the contractor, as an enclosure is to be provided for each window:

Drawing	Location	Length(inch)
M-400	Pillar 38 to 41	36
M-401	Pillar 12 to 14	30
M-402	Pillar 97 to 98	42
M-402	Pillar 98 to 99	42
M-402	Pillar 99 to 101	36
M-402	Pillar 101 to 103	42
M-402	Pillar 103 to 109	36
M-403	before pillar 139	42
M-403	after pillar 149	42
M-403	after pillar 149	66
M-403	after pillar 149	60





- [illegible]

- DRAWING NOTES

- [illegible]

- NOTES

- ALL MECHANICAL PERSONNEL INVOLVED ON THE BASEMENT FLOOR SHALL ONLY BE DONE AFTER HOURS (5:30 PM TO 8:30 AM). THIS INCLUDES REMOVAL & CAPPING OF OUTDOOR AIR DUCTWORK IN CEILING SPACE, REMOVAL/CAPPING/NEW CONNECTION OF CHILLED WATER PIPES & HEATING WATER PIPES, REMOVAL/CAPPING/NEW CONNECTION OF CONDENSATE DRAIN, FLOOR SLAB CUTTING/PATCHING, ETC. CONTRACTOR SHALL COORDINATE WITH RESIDENTS PRIOR TO COMMENCEMENT OF ANY WORK.

- ### LEAN COIL PLACEMENT & PING INSTALLATION NOTES:

- BE INSTALLED IN A WAY WHERE NO INTERFERENCES (E.G. SPRINKLER PIPE, CHIMNEY, HEATING WATER LINES, ETC.) ARE NOT RUNNING UNDER THE UNIT. THIS IS TO ALLOW FOR THE MOTOR TO BE SECURED TO THE MAINTENANCE CONNECTION TO ENSURE ADEQUATE RESISTANCE IS PROVIDED TO ALLOW FOR REMOVAL & RE-INSTALLATION OF THE COIL UNIT FOR REGULAR MAINTENANCE SERVICE AND OR UNIT RE-ALIGNMENT IF/WHEN IT HAS A TENDENCY TO SCAR-OFF ON THE INSTALLATION. THE DOWNFLOW IS TO BE DONE ALL ACROSS THE NETWORK.


GENERAL NOTES

- [illegible]

- [illegible]

- G. Bruce Straton Architects


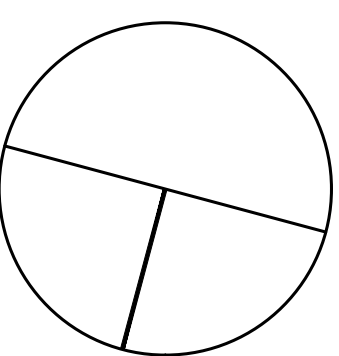
217 Richmond Street W
Toronto Ontario M5V 1W4
telephone: 416.351.8145
facsimile: 416.351.8146

GPY + 

Associates Engineering Inc.

90C Centurian Drive
Unit 6
Markham, Ontario
L3R 8C5

Tel: 905 475 3138
Fax: 866 853 3732
email: engineering@gpyearchitecting.com



York Region

PROPERTY SERVICES

DEPARTMENT: BUILDING & FACILITIES

FLOOR: GROUND, 2ND, 3RD, 4TH

BASE DATE: 11-28-2023

PROJECT:

TENDER # RFTC-652-22

YORK REGION

Administrative Centre
17250 Yonge Street
Newmarket, Ontario

SCALE: 1:100

DRAWN BY: K.J/G.P.Y

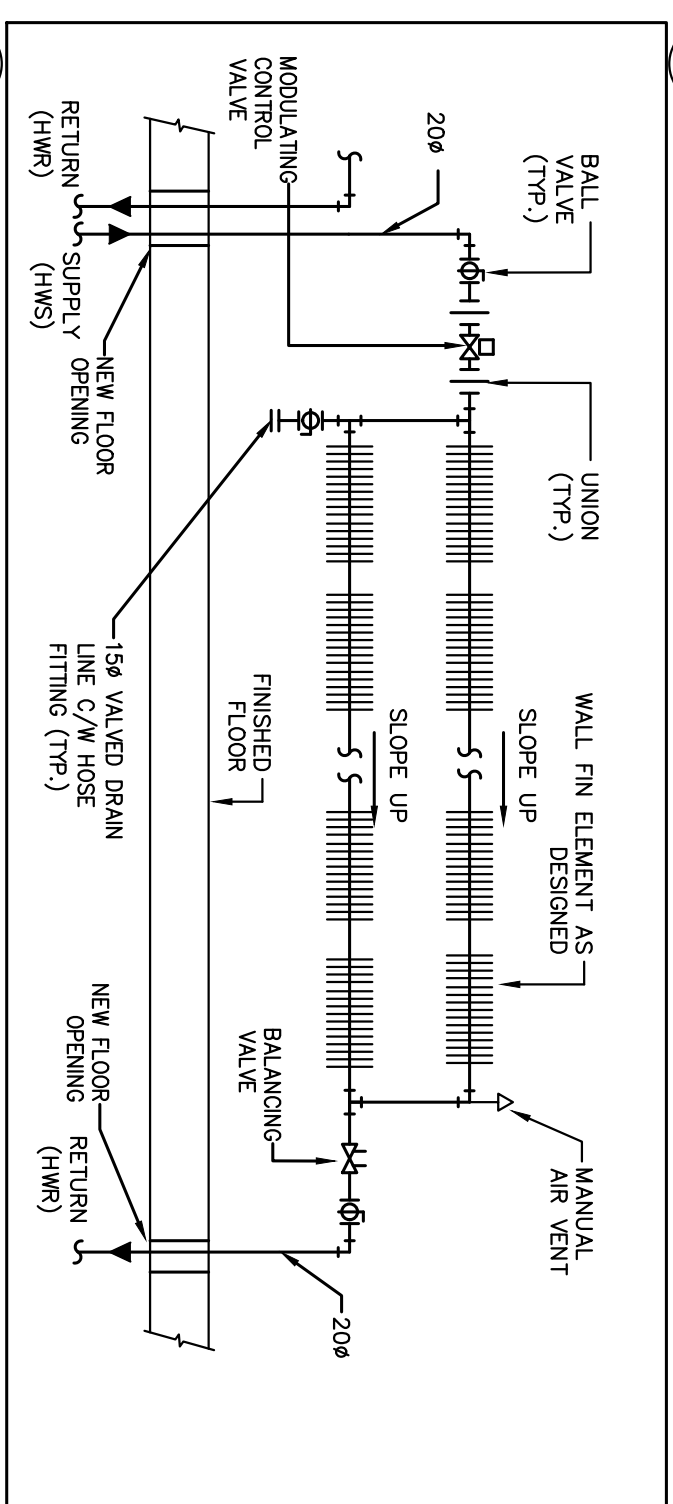
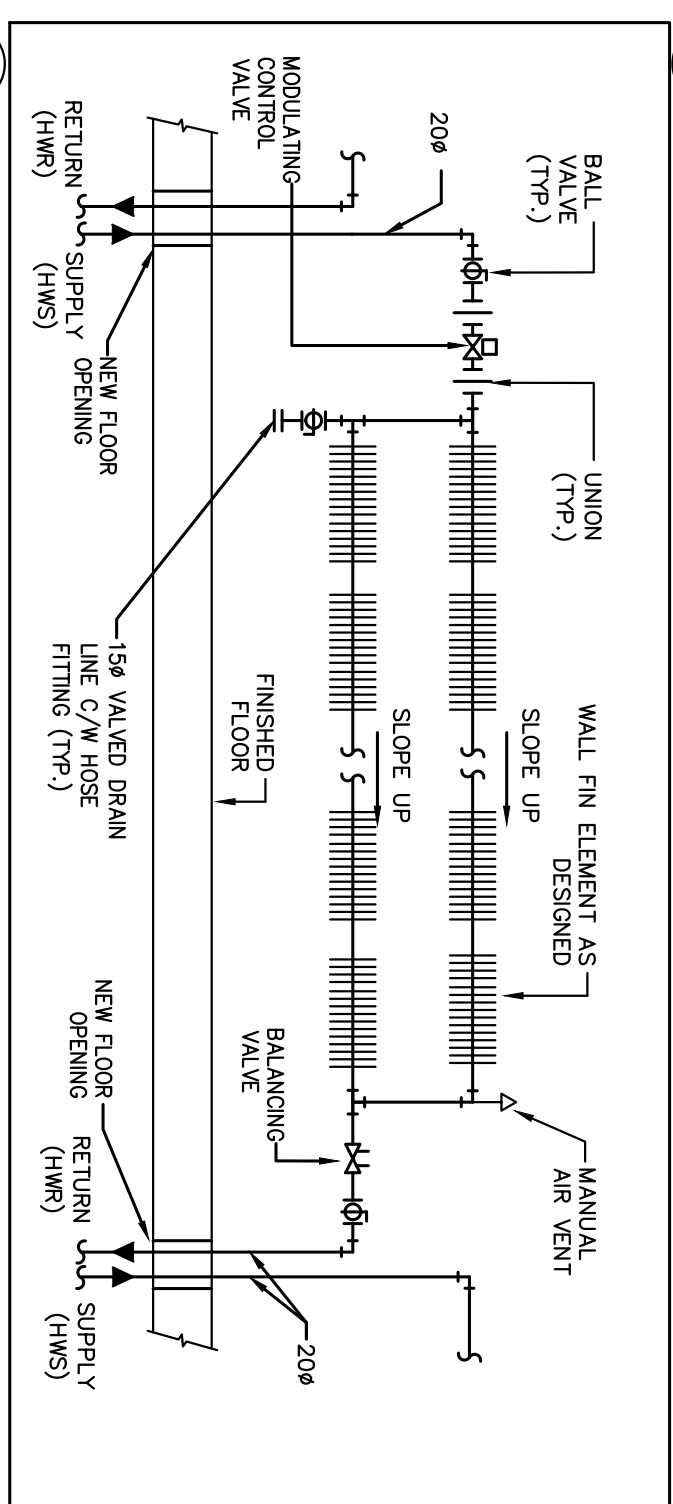
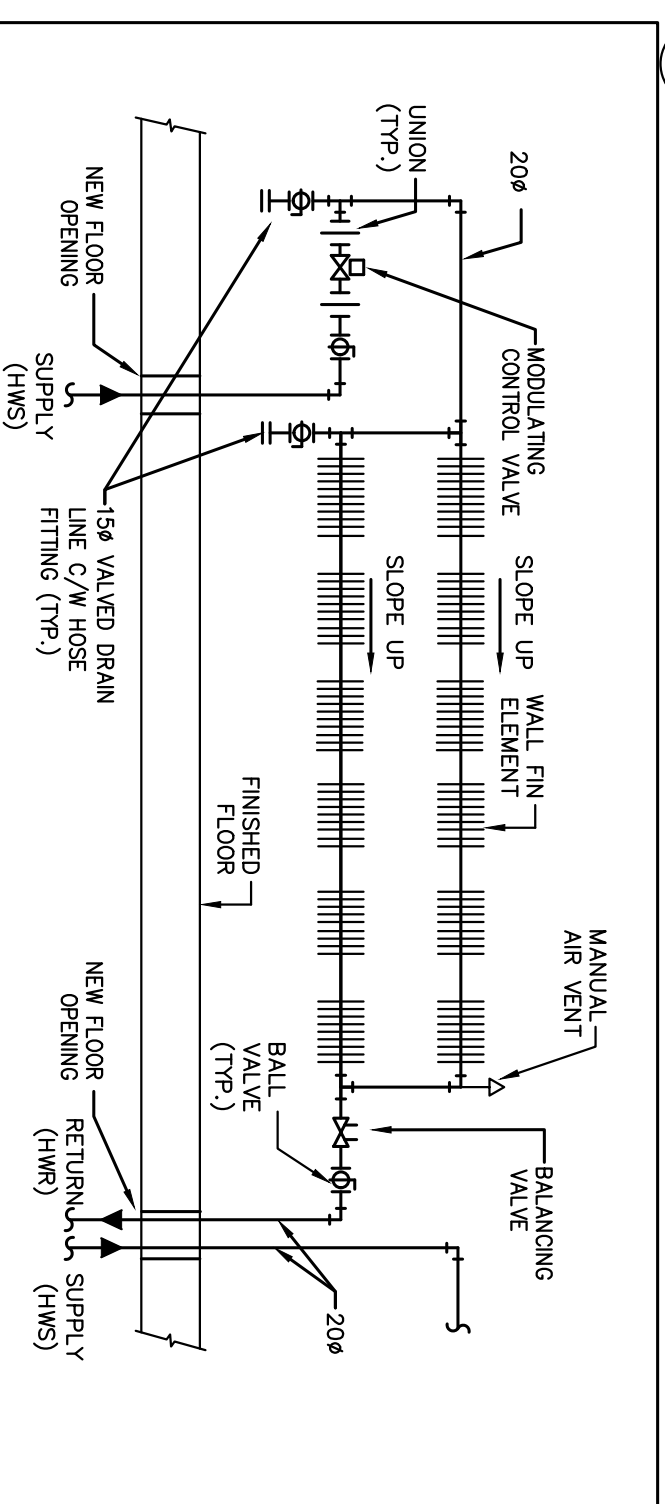
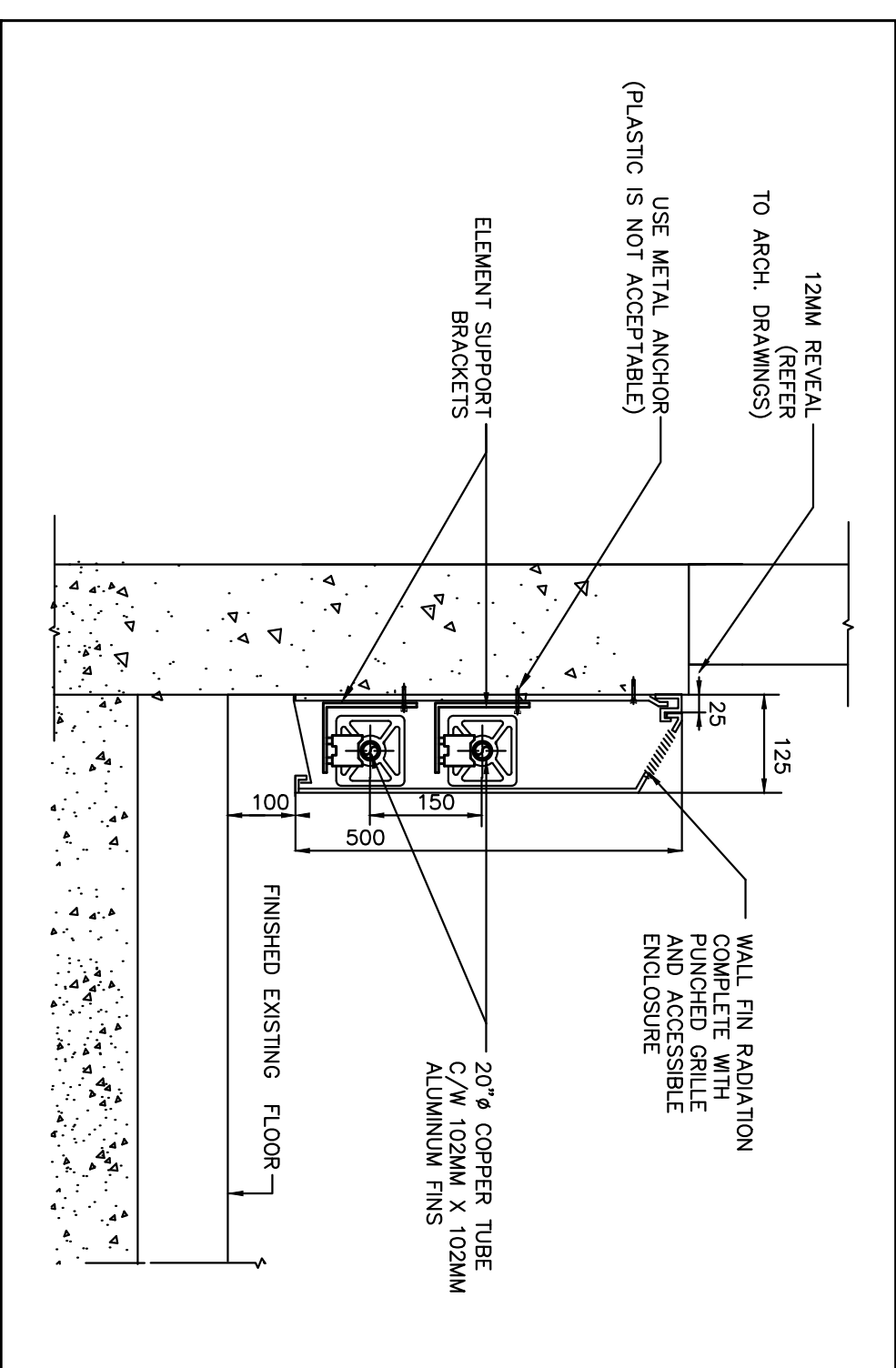
SUBMITTED TO: MUNICIPALITY OF YORK

SHEET TITLE:

PARTIAL GROUND FLOOR AT BLOCK 'D' - HYDRONIC NEW LAYOUT

SHEET NUMBER

M-400



- ## GENERAL NOTES
1. CONSULTING SHALL BE RESPONSIBLE FOR OBTAINING THE PERMIT OF ALL DISTRICTS AND AGENCIES PRIOR TO SAMPLING AND/OR TESTING.
 2. ANY OBTAINING DATA, BENTHIC SAMPLING, AND SPECIFICATIONS AND/OR DESIGN OF SAMPLING ARE TO BE REFERRED TO CONSULTANT FOR INSPECTING ENGINEER'S WORK.
 3. CONSULTING TO COORDINATE WORK ON SITE WITH DISTRICT, A NEW CALIFORNIA, STRUCTURAL, AND ELECTRICAL SPECIFICATIONS.
 4. CONSULTING IS RESPONSIBLE TO HAVE SITE INVESTIGATIONS AND TO DESIGN THAT ALL CONDUITS AND ACCESSORIES BE PROTECTED.
 5. CONSULTING SHALL PROVIDE WORK IN SUCH A MANNER THAT OTHER SERVICES ARE NOT INTERRUPTED.
 6. PROVIDE ALL REQUIRED CUTOFFS AND PLACING OF EXISTING MATERIALS DUE TO WORKS.
 7. DESIGN THAT ALL REQUIRED CUTOFFS AND PLACING OF EXISTING MATERIALS DUE TO WORKS.
 8. REPORT ALL OBSERVATIONS TO THE PROJECT MANAGER AND ENGINEER, PROVIDE ACCESS TO ALL EQUIPMENT AND DESIGN CUTOFFS IN A JOB SHALL BE THE SIGNED, SEALED, COUNTERSIGNED, AND WATERS.
 9. ALL EQUIPMENT, PERSONNEL, AND MATERIALS TO BE PROVIDED BY THE SIGNED, SEALED, COUNTERSIGNED, AND WATERS.
 10. WHERE CUTOFFS, PILING, AND CONCRETE IS REQUIRED TO BE REMOVED, REMOVE ALL ASSOCIATED CUTOFF, PILING, AND CONCRETE.
 11. MATERIALS, SAMPLING, AND DESIGN CUTOFFS SHALL BE OF "A", "B", "C", "D", "E", "F", "G", "H", "I", "J", "K", "L", "M", "N", "O", "P", "Q", "R", "S", "T", "U", "V", "W", "X", "Y", "Z", "AA", "AB", "AC", "AD", "AE", "AF", "AG", "AH", "AI", "AJ", "AK", "AL", "AM", "AN", "AO", "AP", "AQ", "AR", "AS", "AT", "AU", "AV", "AW", "AX", "AY", "AZ", "BA", "BB", "BC", "BD", "BE", "BF", "BG", "BH", "BI", "BJ", "BK", "BL", "BM", "BN", "BO", "BP", "BQ", "BR", "BS", "BT", "BU", "BV", "BW", "BX", "BY", "BZ", "CA", "CB", "CC", "CD", "CE", "CF", "CG", "CH", "CI", "CJ", "CK", "CL", "CM", "CN", "CO", "CP", "CQ", "CR", "CS", "CT", "CU", "CV", "CW", "CX", "CY", "CZ", "DA", "DB", "DC", "DD", "DE", "DF", "DG", "DH", "DI", "DJ", "DK", "DL", "DM", "DN", "DO", "DP", "DQ", "DR", "DS", "DT", "DU", "DV", "DW", "DX", "DY", "DZ", "EA", "EB", "EC", "ED", "EE", "EF", "EG", "EH", "EI", "EJ", "EK", "EL", "EM", "EN", "EO", "EP", "EQ", "ER", "ES", "ET", "EU", "EV", "EW", "EX", "EY", "EZ", "FA", "FB", "FC", "FD", "FE", "FF", "FG", "FH", "FI", "FJ", "FK", "FL", "FM", "FN", "FO", "FP", "FQ", "FR", "FS", "FT", "FU", "FV", "FW", "FX", "FY", "FZ", "GA", "GB", "GC", "GD", "GE", "GF", "GG", "GH", "GI", "GJ", "GK", "GL", "GM", "GN", "GO", "GP", "GQ", "GR", "GS", "GT", "GU", "GV", "GW", "GX", "GY", "GZ", "HA", "HB", "HC", "HD", "HE", "HF", "HG", "HH", "HI", "HJ", "HK", "HL", "HM", "HN", "HO", "HP", "HQ", "HR", "HS", "HT", "HU", "HV", "HW", "HX", "HY", "HZ", "IA", "IB", "IC", "ID", "IE", "IF", "IG", "IH", "II", "IJ", "IK", "IL", "IM", "IN", "IO", "IP", "IQ", "IR", "IS", "IT", "IU", "IV", "IW", "IX", "IY", "IZ", "JA", "JB", "JC", "JD", "JE", "JF", "JG", "JH", "JI", "JJ", "JK", "JL", "JM", "JN", "JO", "JP", "JQ", "JR", "JS", "JT", "JU", "JV", "JW", "JX", "JY", "JZ", "KA", "KB", "KC", "KD", "KE", "KF", "KG", "KH", "KI", "KJ", "KL", "KM", "KN", "KO", "KP", "KQ", "KR", "KS", "KT", "KU", "KV", "KW", "KX", "KY", "KZ", "LA", "LB", "LC", "LD", "LE", "LF", "LG", "LH", "LI", "LJ", "LK", "LL", "LM", "LN", "LO", "LP", "LQ", "LR", "LS", "LT", "LU", "LV", "LW", "LX", "LY", "LZ", "MA", "MB", "MC", "MD", "ME", "MF", "MG", "MH", "MI", "MJ", "MK", "ML", "MM", "MN", "MO", "MP", "MQ", "MR", "MS", "MT", "MU", "MV", "MW", "MX", "MY", "MZ", "NA", "NB", "NC", "ND", "NE", "NF", "NG", "NH", "NI", "NJ", "NK", "NL", "NM", "NN", "NO", "NP", "NQ", "NR", "NS", "NT", "NU", "NV", "NW", "NX", "NY", "NZ", "OA", "OB", "OC", "OD", "OE", "OF", "OG", "OH", "OI", "OJ", "OK", "OL", "OM", "ON", "OO", "OP", "OQ", "OR", "OS", "OT", "OU", "OV", "OW", "OX", "OY", "OZ", "PA", "PB", "PC", "PD", "PE", "PF", "PG", "PH", "PI", "PJ", "PK", "PL", "PM", "PN", "PO", "PP", "PQ", "PR", "PS", "PT", "PU", "PV", "PW", "PX", "PY", "PZ", "QA", "QB", "QC", "QD", "QE", "QF", "QG", "QH", "QI", "QJ", "QK", "QL", "QM", "QN", "QO", "QP", "QQ", "QR", "QS", "QT", "QU", "QV", "QW", "QX", "QY", "QZ", "RA", "RB", "RC", "RD", "RE", "RF", "RG", "RH", "RI", "RJ", "RK", "RL", "RM", "RN", "RO", "RP", "RQ", "RR", "RS", "RT", "RU", "RV", "RW", "RX", "RY", "RZ", "SA", "SB", "SC", "SD", "SE", "SF", "SG", "SH", "SI", "SJ", "SK", "SL", "SM", "SN", "SO", "SP", "SQ", "SR", "SS", "ST", "SU", "SV", "SW", "SX", "SY", "SZ", "TA", "TB", "TC", "TD", "TE", "TF", "TG", "TH", "TI", "TJ", "TK", "TL", "TM", "TN", "TO", "TP", "TQ", "TR", "TS", "TT", "TU", "TV", "TW", "TX", "TY", "TZ", "UA", "UB", "UC", "UD", "UE", "UF", "UG", "UH", "UI", "UJ", "UK", "UL", "UM", "UN", "UO", "UP", "UQ", "UR", "US", "UT", "UU", "UV", "UW", "UX", "UY", "UZ", "VA", "VB", "VC", "VD", "VE", "VF", "VG", "VH", "VI", "VJ", "VK", "VL", "VM", "VN", "VO", "VP", "VQ", "VR", "VS", "VT", "VU", "VV", "VW", "VX", "VY", "VZ", "WA", "WB", "WC", "WD", "WE", "WF", "WG", "WH", "WI", "WJ", "WK", "WL", "WM", "WN", "WO", "WP", "WQ", "WR", "WS", "WT", "WU", "WV", "WW", "WX", "WY", "WZ", "XA", "XB", "XC", "XD", "XE", "XF", "XG", "XH", "XI", "XJ", "XK", "XL", "XM", "XN", "XO", "XP", "XQ", "XR", "XS", "XT", "XU", "XV", "XW", "XX", "XY", "XZ", "YA", "YB", "YC", "YD", "YE", "YF", "YG", "YH", "YI", "YJ", "YK", "YL", "YM", "YN", "YO", "YP", "YQ", "YR", "YS", "YT", "YU", "YV", "YW", "YX", "YY", "YZ", "ZA", "ZB", "ZC", "ZD", "ZE", "ZF", "ZG", "ZH", "ZI", "ZJ", "ZK", "ZL", "ZM", "ZN", "ZO", "ZP", "ZQ", "ZR", "ZS", "ZT", "ZU", "ZV", "ZW", "ZX", "ZY", "ZZ".

DRAWING NOTES

- [illegible]

NOTES

ALL MECHANICAL WORKS INVOLVED ON THE GROUND FLOOR SHALL ONLY BE DONE AFTER HOURS (5:30 PM TO 8:30 AM). THIS INCLUDES REMOVAL & CAPPING OF OUTDOOR AIR DUCTWORK IN CEILING SPACE, REMOVAL/CAPPING/NEW CONNECTION OF CHILLED WATER PIPES & HEATING WATER PIPES, REMOVAL/CAPPING/NEW CONNECTION OF CONDENSATE DRAIN, FLOOR SLAB CUTTING/PATCHING, ETC. CONTRACTOR SHALL COORDINATE WITH REGIONS PM PRIOR TO COMMENCEMENT OF ANY WORK.

EAM COIL PLACEMENT & PIPING INSTALLATION NOTES:

ON-FAN COIL UNIT, CONDENSATE AND PUMP INSTALLATIONS, ALL MECHANICAL FAN COIL UNITS TO BE INSTALLED IN A WAY WHERE NO INTERFERENCES (E.G. SPRINKLER PIPING, CHILLED/HEATING WATER LINES, ETC.) ARE NOT RUNNING UNDER THE UNIT. THIS IS TO ALLOW FOR THE OWNER TO BE ABLE TO SERVICE THE MAINTENANCE CONTRACTOR TO ENSURE ADEQUATE SPACE IS PROVIDED TO ALLOW FOR REMOVAL & RE-INSTALLATION OF FAN COIL UNIT FOR RECLAM MAINTENANCE/SERVING AND OR UNIT BECOMING FAULTY TO HAVE A MEETING TO SHUT-OFF ON THE INSTALLATION, THE CONTRACTOR IS TO BEAR ALL COSTS FOR THE REMOVAL

SUBMISSION	DATE	DESCRIPTION
1	2022-01-30	ISSUED FOR 60% PROGRESS REVIEW
2	2024-04-17	ISSUED FOR 90% PROGRESS REVIEW
3	2024-05-24	ISSUED FOR PERMITTING UNDER
4	2024-07-15	ISSUED AS PER ADDENDUM M-1
5	2024-07-23	ISSUED AS PER ADDENDUM M-2
6	2024-09-18	ISSUED FOR CONSTRUCTION

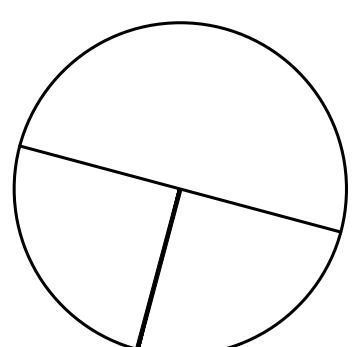

G. Bruce Stratton Architects

217 Richmond Street West
Toronto Ontario M5V 1W5
telephone: 416.351.8145
facsimile: 416.351.8146

GPY +
Associates Engineering Inc.

90C Centurian Drive
Unit 6
Markham, Ontario
L3R 8C5

Tel: 905 475 3138
Fax: 866 853 3732
email: engineering
@gpyengineering.com



York Region
PROPERTY SERVICES

PROPERTY SERVICES

DEPARTMENT: BUILDING & FACILITIES

FLOOR: GROUND, 2ND, 3RD, 4TH

BASE DATE: 11-28-2023

PROJECT:

TENDER # RFTC-652-22

YORK REGION

Administrative Centre
17250 Yonge Street
Newmarket, Ontario

SCALE: 1:100

DRAWN BY: K.J/G.P.Y.

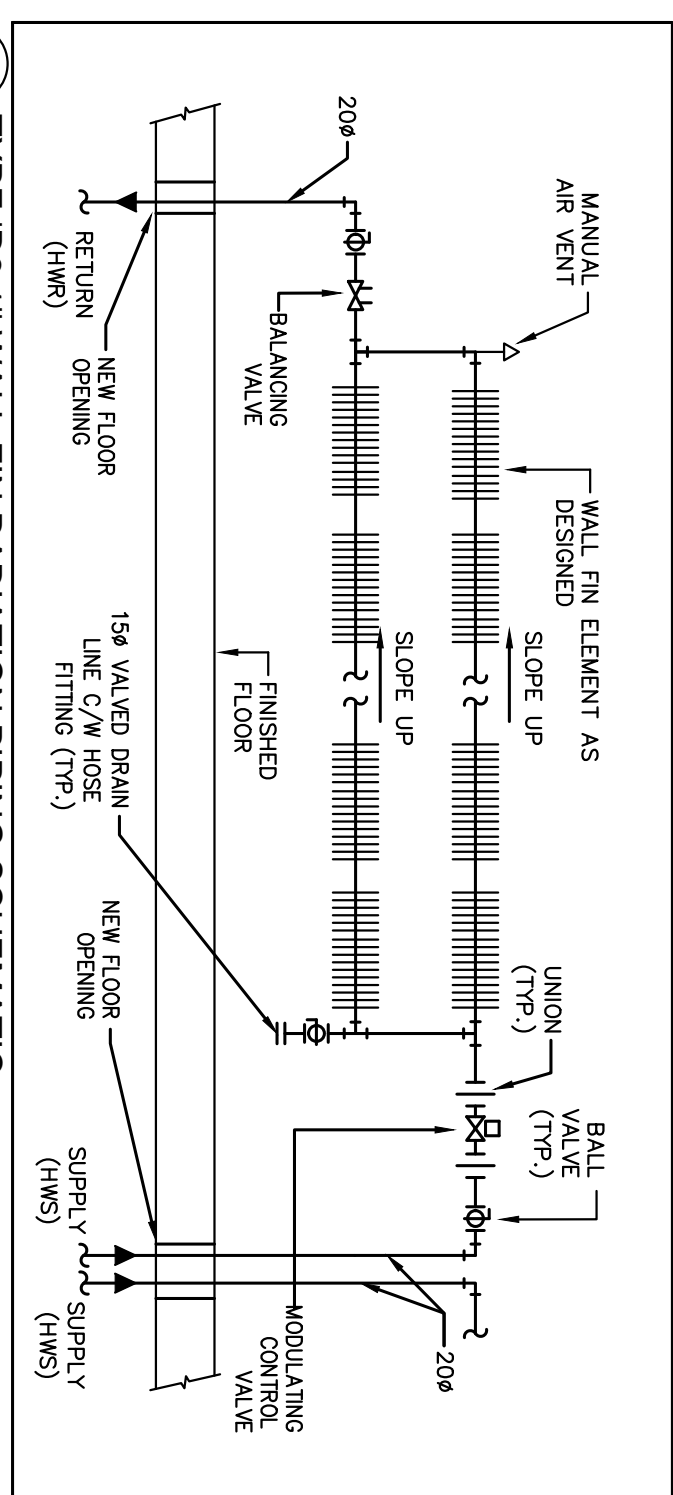
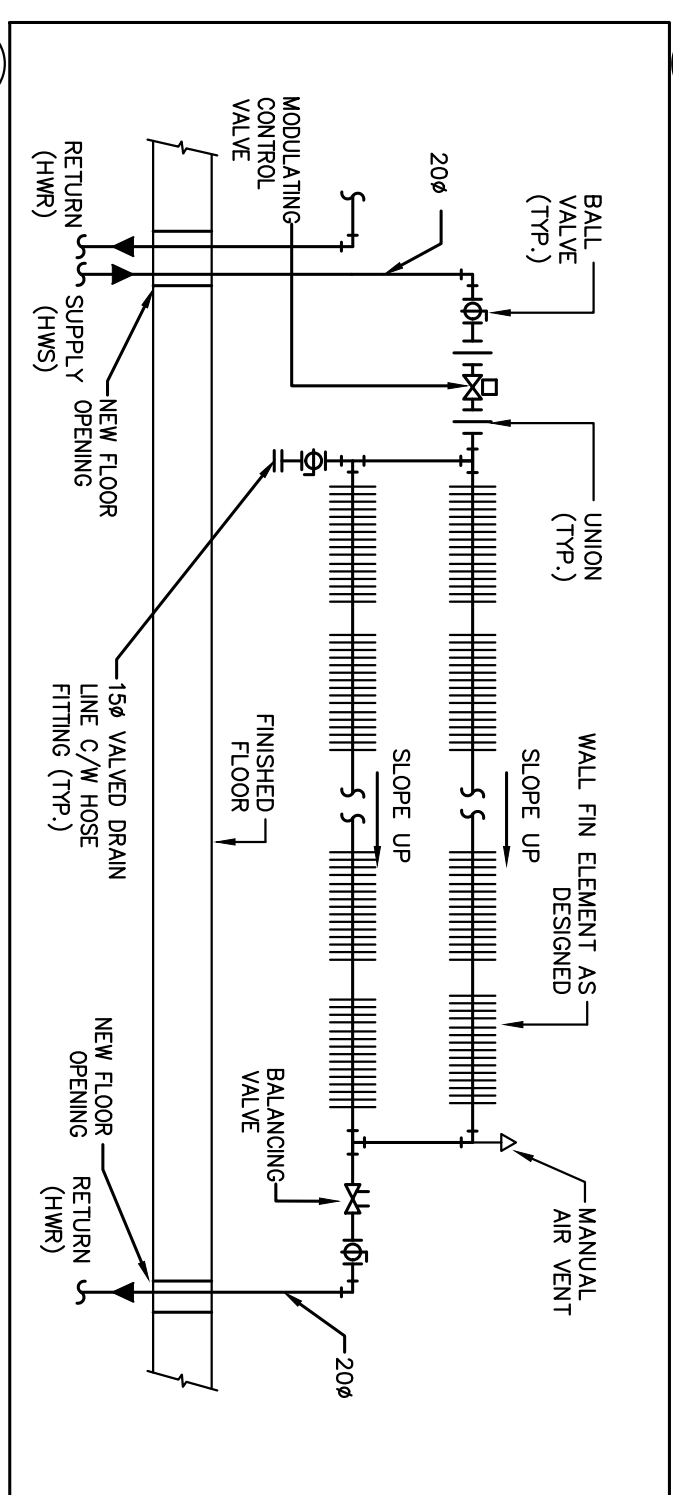
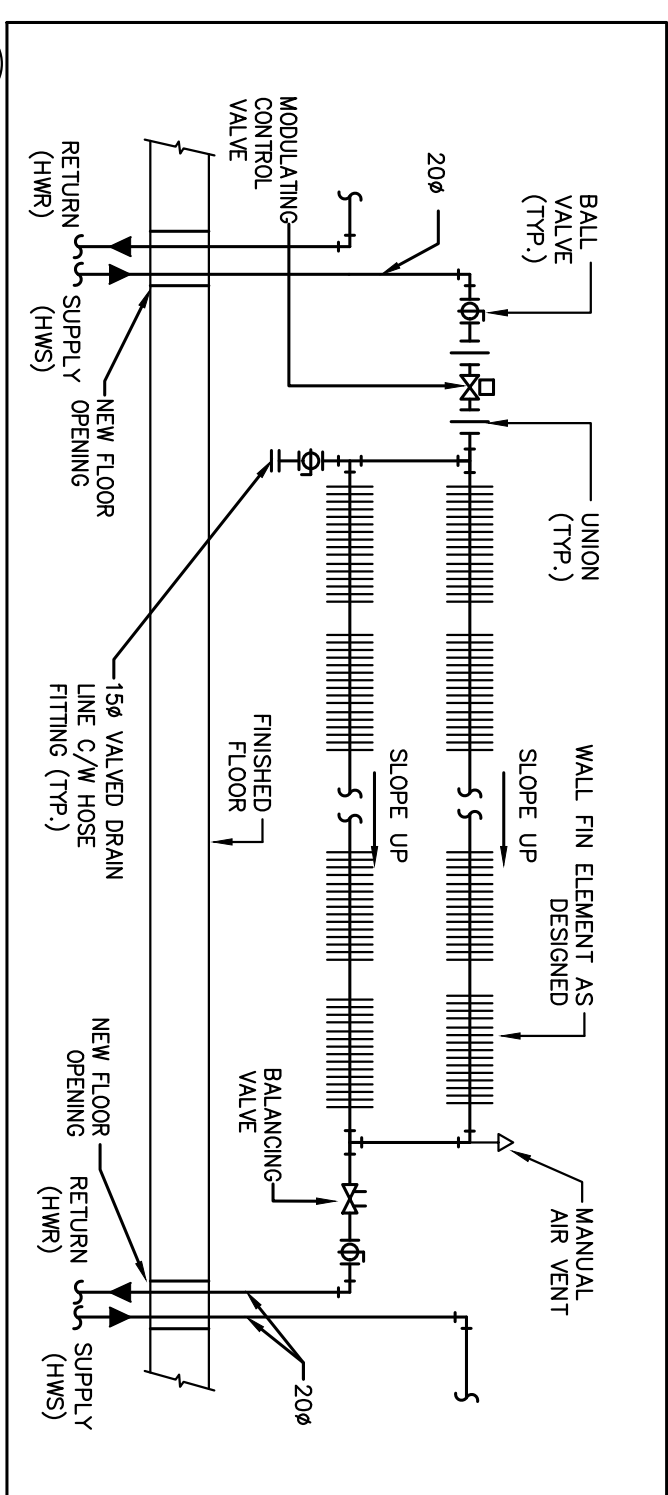
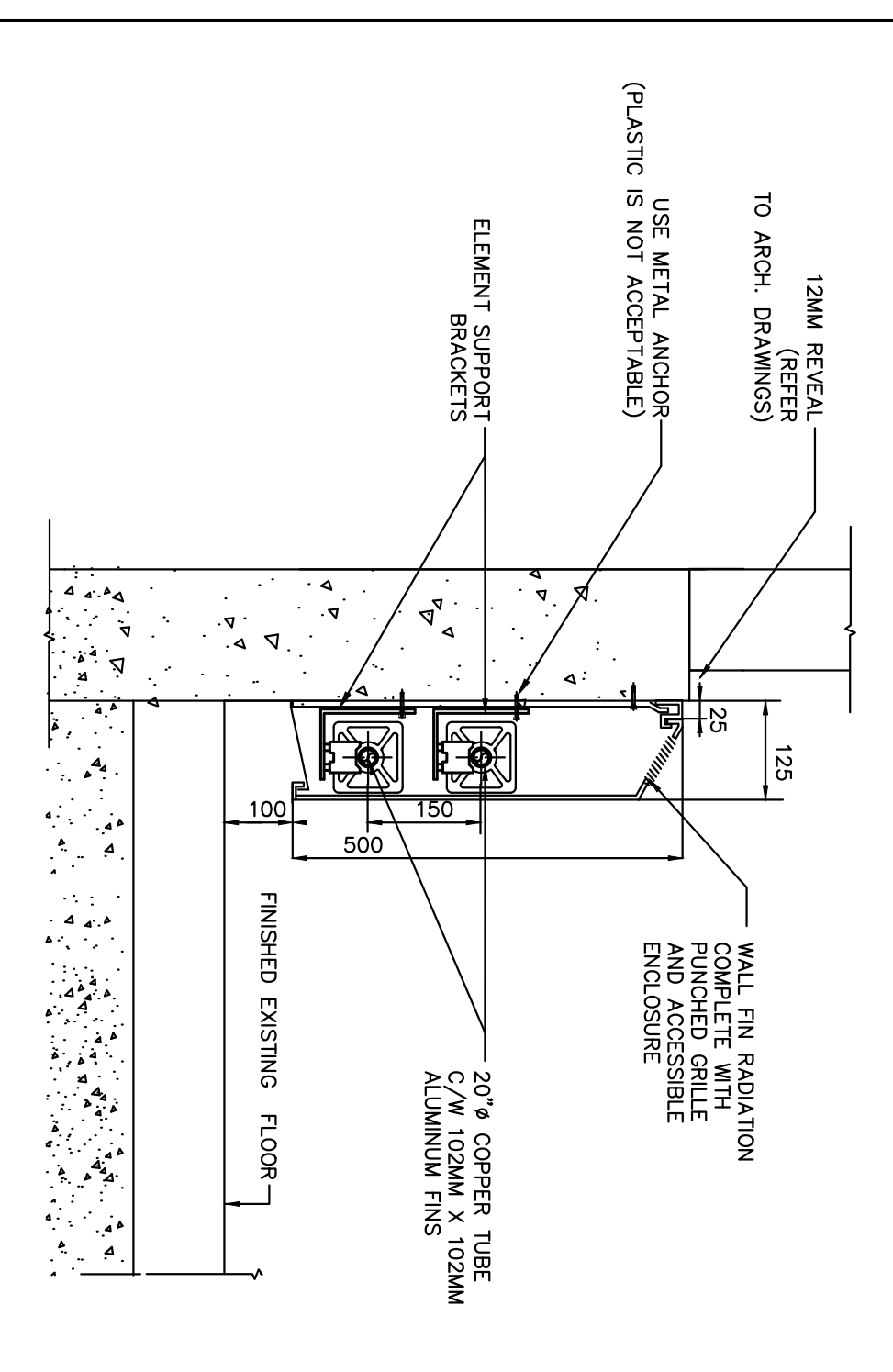
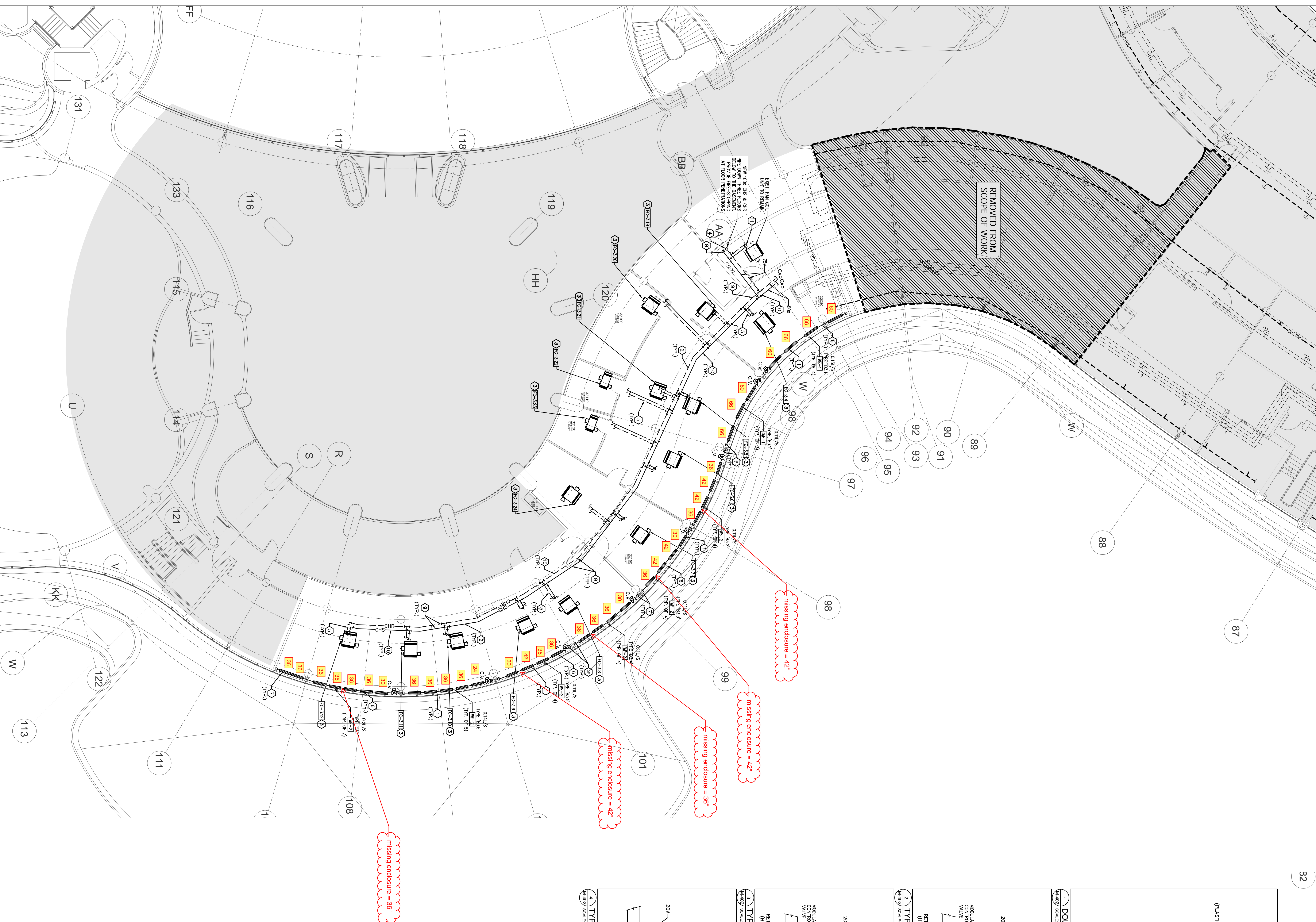
SUBMITTED TO: MUNICIPALITY OF YORK

SHEET TITLE:

PARTIAL SECOND FLOOR AT BLOCK 'A' - HYDRONIC NEW LAYOUT

SHEET NUMBER

M-401



1. CONTRACTOR SHALL VISIT TO DETERMINE THE EXTENT OF ALL EXISTING UTILITIES PRIOR TO STARTING WORK AND NOTIFICATION.
2. ANY DISCREPANCIES BETWEEN DRAWINGS AND FIELD EXISTING UTILITIES SHALL BE REPORTED TO THE ENGINEER IMMEDIATELY. ANY WORK IS TO BE STOPPED IMMEDIATELY UNTIL THE DISCREPANCY IS RESOLVED.
3. CONTRACTOR TO COORDINATE WORK ON ALL EXISTING AND NEW MECHANICAL, ELECTRICAL, AND TELEPHONE SERVICES.
4. CONTRACTOR SHALL PROTECT ALL EXISTING UTILITIES AND TO ENSURE THAT ALL UTILITIES ARE ACCESSIBLE THROUGHOUT THE PROJECT.
5. MECHANICAL CONTRACTOR SHALL AVOID WORK IN SUCH WAY THAT OTHER SERVICES ARE NOT DISRUPTED.
6. PROVIDE ALL EXISTING DUCTING AND PIPING OF EXISTING SYSTEMS, CLEAN TO MEET THE REQUIREMENTS OF THE MECHANICAL AND ELECTRICAL SPECIFICATIONS AND TO BE USED FOR THE PROJECT.
7. DURING THE ALL MECHANICAL CONTRACTOR REMOVING MAINTENANCE IS AVOIDANCE. THE CONTRACTOR SHALL BE RESPONSIBLE FOR THE PROTECTION OF ALL EXISTING UTILITIES AND TO ENSURE THAT ALL UTILITIES ARE ACCESSIBLE THROUGHOUT THE PROJECT.
8. ALL EXISTING AND DISCREPANCIES IN SNA SHALL BE PREPARED, SIGNED, CAPTIONED, AND MAILED.
9. WHERE DUCTING, PIPING, AND EQUIPMENT IS REQUIRED TO BE REMOVED, DRAINAGE ALL DISCREPANCIES TO BE REPORTED IMMEDIATELY TO THE ENGINEER.
10. CONTRACTOR SHALL BE TO BE SURE IN CONSULTATION WITH ARCHITECTURAL DRAWINGS.
11. INSTALLATION METHOD OF REMOVED SERVICES SHALL BE "AS-BUILT" (TYPICAL PER AIA).

DRAWING NOTES

- [illegible]

NOTES

- ALL MECHANICAL WORKS INVOLVED ON THE FIRST FLOOR AND BASEMENT SHALL ONLY BE DONE AFTER HOURS (5:30 PM TO 8:30 AM). THIS INCLUDES REMOVAL & CAPPING OUTDOOR AIR DUCTWORK IN CEILING SPACE, REMOVAL/CAPPING/NEW CONNECTION IN CHILLED WATER PIPES & HEATING WATER PIPES, REMOVAL/CAPPING/NEW CONNECTION CONDENSATE DRAIN, FLOOR SLAB CUTTING/PATCHING, E.T.C., CONTRACTOR SHALL COORDINATE WITH REGION'S PM PRIOR TO COMMENCEMENT OF ANY WORK.

EAM COIL PLACEMENT & PIPING INSTALLATION NOTES

STAFFING AND MAINTENANCE MEETING OR SITE TO REVIEW AND DISCUSS THE FOLLOWING: (1) THE NEED FOR MAINTENANCE OF THE FAN COIL UNIT PLACEMENT AND PIPE INSTALLATIONS, ALL MECHANICAL FAN COIL UNITS TO BE INSTALLED IN A WAY WHERE NO INTERFERENCES (E. SPRINKLER PIPE, CHILLED/HEATING WATER LINES, ETC.) ARE NOT FORMING UNDER THE UNIT. THIS IS TO ALLOW FOR THE MOTORS TO BE REPLACED IN FUTURE MAINTENANCE. CONTRACTOR TO ASSESS ALTERNATE SIZES TO BE PROVIDED TO ALLOW FOR REMOVAL & RE-INSTALLATION OF FAN COIL UNIT FOR FUTURE MAINTENANCE; (2) SERVICE AND/OR UNIT REPLACEMENT. FAILURE TO HAVE A MEETING TO SORT-OUT THE INSTALLATION, THE CONTRACTOR IS TO BEAR ALL COSTS FOR THE REPAIRS/REWORK.

SUBMISSION	DATE	DESCRIPTION
6	2024-09-18	ISSUED FOR CONSTRUCTION
5	2024-07-23	ISSUED AS PER ADDENDUM M-2
4	2024-07-15	ISSUED AS PER ADDENDUM M-1
3	2024-06-24	ISSUED FOR PERMIT/TENDER
2	2024-04-17	ISSUED FOR 90% PROGRESS REVIEW
1	2024-01-30	ISSUED FOR 60% PROGRESS REVIEW

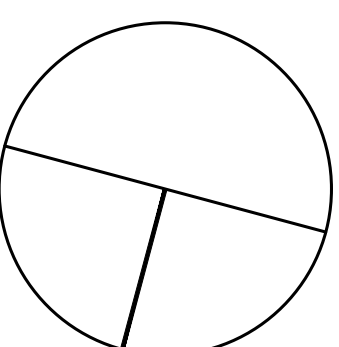

G. Bruce Stratton Architects

217 Richmond Street West
Toronto Ontario M5V 1W1
telephone: 416.351.8145
facsimile: 416.351.8146

GPY +
Associates Engineering Inc.

90C Centurian Drive
Unit 6
Markham, Ontario
L3R 8C5

Tel: 905 475 3138
Fax: 866 853 3732
email: engineering
@gpyengineering.com



York Region
PROPERTY SERVICES

PROPERTY SERV

DEPARTMENT: BUILDING & FACILITIES

FLOOR: GROUND,

PROJECT:

TENDER # RFTC-652-22

YORK REGION

Administrative Centre
17250 Yonge Street
Newmarket, Ontario

SCALE: 1:100

DRAWN BY: K.J/G.P.Y.

SUBMITTED TO: MUNICIPALITY OF YORK

**PARTIAL THIRD FLOOR AT
BLOCK 'B' & 'C' - HYDRONIC
NEW LAYOUT**

SHEET NUMBER

M-402

Item	Drawing	Location Marker	Tag	Enclosure Length (ft)	Element Length (ft)	Enclosure Length (in)	Element Length (in)
1	M400	before Pillar 37	WF-2	4.5	3.5	54.0	42
2	M400	Pillar 37 to 38	WF-2	3.5	2.5	42.0	30
3	M400	Pillar 37 to 38	WF-2	4.0	3.0	48.0	36
4	M400	Pillar 37 to 38	WF-2	4.0	3.0	48.0	36
5	M400	Pillar 37 to 38	WF-2	4.0	3.0	48.0	36
6	M400	Pillar 37 to 38	WF-2	3.5	2.5	42.0	30
7	M400	Pillar 38 to 41	WF-2	3.0	2.0	36.0	24
8	M400	Pillar 38 to 41	WF-2	3.5	2.5	42.0	30
9	M400	Pillar 38 to 41	WF-2	3.5	2.5	42.0	30
10	M400	Pillar 38 to 41	WF-2	3.5	2.5	42.0	30
11	M400	Pillar 38 to 41	WF-2	3.5	2.5	42.0	30
12	M400	Pillar 38 to 41	WF-2	3.0	2.0	36.0	24
13	M400	Pillar 41 to 45	WF-2	3.0	2.0	36.0	24
14	M400	Pillar 41 to 45	WF-2	3.5	2.5	42.0	30
15	M400	Pillar 41 to 45	WF-2	3.5	2.5	42.0	30
16	M400	Pillar 41 to 45	WF-2	3.5	2.5	42.0	30
17	M400	Pillar 41 to 45	WF-1	3.5	2.5	42.0	30
18	M400	Pillar 45 to 50	WF-1	4.0	3.0	48.0	36
19	M400	Pillar 45 to 50	WF-1	5.0	4.0	60.0	48
20	M400	Pillar 45 to 50	WF-1	5.0	4.0	60.0	48
21	M400	Pillar 45 to 50	WF-1	4.5	3.5	54.0	42
22	M400	Pillar 50 to 51	WF-1	4.5	3.5	54.0	42
23	M400	Pillar 50 to 51	WF-1	5.0	4.0	60.0	48
24	M400	Pillar 50 to 51	WF-1	5.0	4.0	60.0	48
25	M400	Pillar 50 to 51	WF-1	5.0	4.0	60.0	48
26	M400	Pillar 50 to 51	WF-1	4.5	3.5	54.0	42
27	M400	Pillar 51 to 52	WF-1	4.5	3.5	54.0	42
28	M400	Pillar 51 to 52	WF-1	5.0	4.0	60.0	48
29	M400	Pillar 51 to 52	WF-1	5.0	4.0	60.0	48
30	M400	Pillar 51 to 52	WF-1	5.0	4.0	60.0	48
31	M400	Pillar 51 to 52	WF-1	5.0	4.0	60.0	48
32	M400	Pillar 51 to 52	WF-1	4.5	3.5	54.0	42
33	M400	Pillar 52 to 53	WF-1	4.5	3.5	54.0	42
34	M400	Pillar 52 to 53	WF-1	5.0	4.0	60.0	48
35	M400	Pillar 52 to 53	WF-1	5.0	4.0	60.0	48
36	M400	Pillar 52 to 53	WF-1	5.0	4.0	60.0	48
37	M400	Pillar 52 to 53	WF-1	5.0	4.0	60.0	48
38	M400	Pillar 52 to 53	WF-1	4.5	3.5	54.0	42
39	M400	Pillar 53 to 54	WF-1	4.5	3.5	54.0	42
40	M400	Pillar 53 to 54	WF-1	5.0	4.0	60.0	48
41	M400	Pillar 53 to 54	WF-1	5.0	4.0	60.0	48
42	M400	Pillar 54 to 55	WF-1	5.0	4.0	60.0	48
43	M400	Pillar 54 to 55	WF-1	4.5	3.5	54.0	42
44	M400	Pillar 55 to 59	WF-1	4.5	3.5	54.0	42
45	M400	Pillar 55 to 59	WF-1	5.0	4.0	60.0	48
46	M400	Pillar 55 to 59	WF-1	5.0	4.0	60.0	48
47	M400	Pillar 55 to 59	WF-1	5.0	4.0	60.0	48
48	M400	Pillar 55 to 59	WF-1	4.0	3.0	48.0	36
49	M400	Pillar 59 to 61	WF-2	4.5	3.5	54.0	42
50	M400	Pillar 59 to 61	WF-2	5.0	4.0	60.0	48

51	M400	Pillar 59 to 61	WF-2	2.0	1.0	24.0	12
52	M401	Pillar 1 to 2	WF-2	4.0	3.0	48.0	36
53	M401	Pillar 1 to 2	WF-2	4.0	3.0	48.0	36
54	M401	Pillar 1 to 2	WF-2	4.0	3.0	48.0	36
55	M401	Pillar 2 to 5	WF-2	3.0	2.0	36.0	24
56	M401	Pillar 2 to 5	WF-2	4.0	3.0	48.0	36
57	M401	Pillar 2 to 5	WF-2	4.0	3.0	48.0	36
58	M401	Pillar 2 to 5	WF-2	3.5	2.5	42.0	30
59	M401	Pillar 5 to 9	WF-1	4.5	3.5	54.0	42
60	M401	Pillar 5 to 9	WF-1	4.5	3.5	54.0	42
61	M401	Pillar 5 to 9	WF-1	4.5	3.5	54.0	42
62	M401	Pillar 5 to 9	WF-1	4.5	3.5	54.0	42
63	M401	Pillar 9 to 12	WF-2	3.0	2.0	36.0	24
64	M401	Pillar 9 to 12	WF-2	4.0	3.0	48.0	36
65	M401	Pillar 9 to 12	WF-2	3.5	2.5	42.0	30
66	M401	Pillar 12 to 14	WF-2	2.5	1.5	30.0	18
67	M401	Pillar 12 to 14	WF-2	2.5	1.5	30.0	18
68	M401	Pillar 12 to 14	WF-2	2.5	1.5	30.0	18
69	M401	Pillar 12 to 14	WF-2	2.5	1.5	30.0	18
70	M401	Pillar 12 to 14	WF-2	2.5	1.5	30.0	18
71	M401	Pillar 12 to 14	WF-2	2.5	1.5	30.0	18
72	M401	Pillar 14 to 15	WF-1	4.0	3.0	48.0	36
73	M401	Pillar 14 to 15	WF-1	4.5	3.5	54.0	42
74	M401	Pillar 14 to 15	WF-1	4.5	3.5	54.0	42
75	M401	Pillar 15 to 16	WF-1	4.5	3.5	54.0	42
76	M401	Pillar 15 to 16	WF-1	4.5	3.5	54.0	42
77	M401	Pillar 15 to 16	WF-1	4.5	3.5	54.0	42
78	M401	Pillar 16 to 16x	WF-2	3.5	2.5	42.0	30
79	M401	Pillar 16 to 16x	WF-2	4.0	3.0	48.0	36
80	M401	Pillar 16 to 16x	WF-2	4.0	3.0	48.0	36
81	M401	Pillar 16 to 16x	WF-2	3.5	2.5	42.0	30
82	M401	Pillar 16x to 17	WF-2	3.5	2.5	42.0	30
83	M401	Pillar 16x to 17	WF-2	4.0	3.0	48.0	36
84	M401	Pillar 16x to 17	WF-2	4.0	3.0	48.0	36
85	M401	Pillar 16x to 17	WF-2	3.5	2.5	42.0	30
86	M401	Pillar 17 to 17x	WF-2	3.5	2.5	42.0	30
87	M401	Pillar 17 to 17x	WF-2	4.0	3.0	48.0	36
88	M401	Pillar 17 to 17x	WF-2	4.0	3.0	48.0	36
89	M401	Pillar 17 to 17x	WF-2	3.5	2.5	42.0	30
90	M401	Pillar 17x to 18	WF-2	3.5	2.5	42.0	30
91	M401	Pillar 17x to 18	WF-2	4.0	3.0	48.0	36
92	M401	Pillar 17x to 18	WF-2	4.0	3.0	48.0	36
93	M401	Pillar 17x to 18	WF-2	3.5	2.5	42.0	30
94	M401	Pillar 18 to 18x	WF-2	3.0	2.0	36.0	24
95	M401	Pillar 18 to 18x	WF-2	4.0	3.0	48.0	36
96	M401	Pillar 18 to 18x	WF-2	4.0	3.0	48.0	36
97	M401	Pillar 18 to 18x	WF-2	3.5	2.5	42.0	30
98	M401	Pillar 18x to 19	WF-2	3.5	2.5	42.0	30
99	M401	Pillar 18x to 19	WF-2	4.0	3.0	48.0	36
100	M401	Pillar 18x to 19	WF-2	4.0	3.0	48.0	36
101	M401	Pillar 18x to 19	WF-2	3.0	2.0	36.0	24

102	M401	Pillar 19 to 20	WF-2	3.5	2.5	42.0	30
103	M401	Pillar 19 to 20	WF-2	4.0	3.0	48.0	36
104	M401	Pillar 19 to 20	WF-2	4.0	3.0	48.0	36
105	M401	Pillar 19 to 20	WF-2	3.5	2.5	42.0	30
106	M402	before pillar 94	WF-1	5.0	4.0	60.0	48
107	M402	Pillar 94 to 97	WF-1	5.5	4.5	66.0	54
108	M402	Pillar 94 to 97	WF-1	5.5	4.5	66.0	54
109	M402	Pillar 94 to 97	WF-1	5.0	4.0	60.0	48
110	M402	Pillar 94 to 97	WF-1	5.0	4.0	60.0	48
111	M402	Pillar 94 to 97	WF-1	5.5	4.5	66.0	54
112	M402	Pillar 94 to 97	WF-1	5.5	4.5	66.0	54
113	M402	Pillar 97 to 98	WF-2	3.0	2.0	36.0	24
114	M402	Pillar 97 to 98	WF-2	3.5	2.5	42.0	30
115	M402	Pillar 97 to 98	WF-2	3.5	2.5	42.0	30
116	M402	Pillar 97 to 98	WF-2	3.5	2.5	42.0	30
117	M402	Pillar 97 to 98	WF-2	3.0	2.0	36.0	24
118	M402	Pillar 98 to 99	WF-2	2.5	1.5	30.0	18
119	M402	Pillar 98 to 99	WF-2	3.5	2.5	42.0	30
120	M402	Pillar 98 to 99	WF-2	3.5	2.5	42.0	30
121	M402	Pillar 98 to 99	WF-2	3.5	2.5	42.0	30
122	M402	Pillar 98 to 99	WF-2	3.0	2.0	36.0	24
123	M402	Pillar 99 to 101	WF-2	2.5	1.5	30.0	18
124	M402	Pillar 99 to 101	WF-2	3.0	2.0	36.0	24
125	M402	Pillar 99 to 101	WF-2	3.0	2.0	36.0	24
126	M402	Pillar 99 to 101	WF-2	3.0	2.0	36.0	24
127	M402	Pillar 99 to 101	WF-2	3.0	2.0	36.0	24
128	M402	Pillar 101 to 103	WF-2	3.0	2.0	36.0	24
129	M402	Pillar 101 to 103	WF-2	3.0	2.0	36.0	24
130	M402	Pillar 101 to 103	WF-2	3.5	2.5	42.0	30
131	M402	Pillar 101 to 103	WF-2	3.5	2.5	42.0	30
132	M402	Pillar 101 to 103	WF-2	2.5	1.5	30.0	18
133	M402	Pillar 103 to 109	WF-2	2.0	1.0	24.0	12
134	M402	Pillar 103 to 109	WF-2	3.0	2.0	36.0	24
135	M402	Pillar 103 to 109	WF-2	3.0	2.0	36.0	24
136	M402	Pillar 103 to 109	WF-2	3.0	2.0	36.0	24
137	M402	Pillar 103 to 109	WF-2	3.0	2.0	36.0	24
138	M402	Pillar 103 to 109	WF-2	2.5	1.5	30.0	18
139	M402	Pillar 103 to 109	WF-2	3.0	2.0	36.0	24
140	M402	Pillar 103 to 109	WF-2	3.0	2.0	36.0	24
141	M402	Pillar 103 to 109	WF-2	3.0	2.0	36.0	24
142	M402	Pillar 103 to 109	WF-2	3.0	2.0	36.0	24
143	M402	Pillar 103 to 109	WF-2	3.0	2.0	36.0	24
144	M402	after pillar 109	WF-2	3.0	2.0	36.0	24
145	M402	after pillar 109	WF-2	3.0	2.0	36.0	24
146	M403	before pillar 139	WF-1	3.5	2.5	42.0	30
147	M403	Pillar 139 to 141	WF-1	4.0	3.0	48.0	36
148	M403	Pillar 139 to 141	WF-1	5.0	4.0	60.0	48
149	M403	Pillar 139 to 141	WF-1	5.0	4.0	60.0	48
150	M403	Pillar 139 to 141	WF-1	5.0	4.0	60.0	48
151	M403	Pillar 139 to 141	WF-1	4.0	3.0	48.0	36
152	M403	Pillar 141 to 142	WF-2	4.0	3.0	48.0	36

153	M403	Pillar 141 to 142	WF-2	5.0	4.0	60.0	48
154	M403	Pillar 141 to 142	WF-2	5.0	4.0	60.0	48
155	M403	Pillar 141 to 142	WF-2	5.0	4.0	60.0	48
156	M403	Pillar 141 to 142	WF-2	4.0	3.0	48.0	36
157	M403	Pillar 142 to 143	WF-2	4.0	3.0	48.0	36
158	M403	Pillar 142 to 143	WF-2	4.5	3.5	54.0	42
159	M403	Pillar 142 to 143	WF-2	5.0	4.0	60.0	48
160	M403	Pillar 142 to 143	WF-2	4.5	3.5	54.0	42
161	M403	Pillar 142 to 143	WF-2	4.0	3.0	48.0	36
162	M403	Pillar 143 to 145	WF-1	4.5	3.5	54.0	42
163	M403	Pillar 143 to 145	WF-1	4.5	3.5	54.0	42
164	M403	Pillar 143 to 145	WF-1	4.5	3.5	54.0	42
165	M403	Pillar 143 to 145	WF-1	5.0	4.0	60.0	48
166	M403	Pillar 143 to 145	WF-1	4.0	3.0	48.0	36
167	M403	Pillar 145 to 147	WF-1	4.0	3.0	48.0	36
168	M403	Pillar 145 to 147	WF-1	5.5	4.5	66.0	54
169	M403	Pillar 145 to 147	WF-1	4.0	3.0	48.0	36
170	M403	Pillar 145 to 147	WF-1	4.5	3.5	54.0	42
171	M403	Pillar 145 to 147	WF-1	4.0	3.0	48.0	36
172	M403	Pillar 145 to 147	WF-1	4.0	3.0	48.0	36
173	M403	Pillar 145 to 147	WF-1	5.5	4.5	66.0	54
174	M403	Pillar 145 to 147	WF-1	5.0	4.0	60.0	48
175	M403	Pillar 145 to 147	WF-1	5.0	4.0	60.0	48
176	M403	Pillar 145 to 147	WF-1	4.0	3.0	48.0	36
177	M403	Pillar 147 to 149	WF-1	4.0	3.0	48.0	36
178	M403	Pillar 147 to 149	WF-1	5.0	4.0	60.0	48
179	M403	Pillar 147 to 149	WF-1	5.0	4.0	60.0	48
180	M403	Pillar 147 to 149	WF-1	5.0	4.0	60.0	48
181	M403	Pillar 147 to 149	WF-1	4.0	3.0	48.0	36
182	M403	after pillar 149	WF-1	4.0	3.0	48.0	36
183	M403	after pillar 149	WF-1	4.5	3.5	54.0	42
184	M403	after pillar 149	WF-1	5.0	4.0	60.0	48
185	M403	after pillar 149	WF-1	5.0	4.0	60.0	48
186	M403	after pillar 149	WF-1	4.5	3.5	54.0	42
187	M403	after pillar 149	WF-1	2.5	1.5	30.0	18
188	M403	after pillar 149	WF-1	3.5	2.5	42.0	30
189	M403	after pillar 149	WF-1	3.5	2.5	42.0	30
190	M403	after pillar 149	WF-1	3.5	2.5	42.0	30
191	M403	after pillar 149	WF-1	3.5	2.5	42.0	30
192	M403	after pillar 149	WF-1	3.5	2.5	42.0	30
193	M403	after pillar 149	WF-1	3.5	2.5	42.0	30
194	M403	after pillar 149	WF-1	3.5	2.5	42.0	30
195	M403	after pillar 149	WF-1	3.5	2.5	42.0	30
196	M403	after pillar 149	WF-1	5.5	4.5	66.0	54
197	M403	after pillar 149	WF-2	3.0	2.0	36.0	24
198	M403	after pillar 149	WF-2	3.0	2.0	36.0	24
199	M403	after pillar 149	WF-2	3.0	2.0	36.0	24
200	M403	after pillar 149	WF-2	2.5	1.5	30.0	18