

GPY+ Associates Engineering Inc.

## MECHANICAL SHOP DRAWINGS

**PROJECT: York Region Administrative  
Centre – Interior Fit-up  
Package 'D'**

17250 Yonge Street,  
Newmarket, Ontario  
L3R 0T5

Reviewed ☒  
Not Reviewed ☐

Reviewed as Modified ☐  
Revise and Resubmit ☐

This review is for conformance with the general design intent only and does not change the intent of the Contract Documents. Responsibility for errors or omissions in the shop drawings, details, co-ordination and dimensioning remains solely with the Contractor.

GPY+ Associates Engineering Inc.

Name: Sherwin Reyes

Date: January 24, 2025

**PROJECT NO.:** GPY-9920

---

**Shop Drawing No.:** M-2R1

**Product:** Plumbing Fixtures

**Supplier:** Next Plumbing & Hydronics Supply Inc.

---

### Comments:

1. 'WC-1' flush valve: **Acceptable.**
2. 'WC-2' flush valve: **Acceptable.**
3. **We recommend the shop drawings to be reviewed by architect & electrical consultant for their comments.**



# SUBMITTAL

<b>TO:</b> GPY + Associates Engineering Inc. – ATTN: Sherwin Reyes
<b>PROJECT:</b> York Region, Administration Building Package D Renovations
<b>ADDRESS:</b> 17250 Yonge Street, Newmarket, ON
<b>INCLUDED:</b> Mechanical Shop Drawing – Flush Valves
<b>SPEC DIV:</b> 22 42 00

**From:** Trisect Construction Corporation  
7-4020A Sladeview Crescent  
Mississauga, ON L5L 6B1  
Tom Butkovic / Ivan Lulic / Jay Cowie

**The shop drawings included below have been:**

- ☒ REVIEWED
- ☐ REVIEWED AS NOTED
- ☐ RESUBMIT
- ☐ REJECTED

Review of this submission is for compliance with the general intent of the contract. This review does not relieve the Sub-Contractor, Trade Contractor, Supplier or Manufacturer of the responsibility of meeting all requirements of the contract documents. Any deviation from the contract documents initiated by the Sub-Contractor, Trade Contractor, Supplier or Manufacturer shall be at his sole risk and responsibility. QUANTITIES AND DETAIL DIMENSIONS ARE THE SUBCONTRACTORS OR SUPPLIERS' RESPONSIBILITY. VERIFY THE DATA WITH FIELD DIMENSIONS AND CONDITIONS.

<b>Per:</b> Tom Butkovic  <b>Final review to be received by:</b> G. Bruce Stratton Architects	<b>Dated:</b> January 17/2025
--	-------------------------------





54 Audia Court, Unit 2  
Concord, ON L4K 3N5  
(905)-738-1400

## Submittal 24-277-008

PROJECT NAME	PROJECT ADDRESS	DATE SUBMITTED
YORK REGION VARIOUS PROJECTS 24-277	17250 Young Street Newmarket, ON	Jan 14, 2025
TO	FROM	
Tom Butkovic	INZAMAN KHAN	
COMPANY	COMPANY	
TRISECT CONSTRUCTION	Consult Mechanical Inc.	
EMAIL	EMAIL	
tbutkovic@trisectionconstruction.com	inzaman@consultmechanical.com	
ADDRESS	ADDRESS	
4020A SLADEVIEW cRESCENT, UNIT 7 MISSISSAUGA, ON L5L 6B1	54 Audia Court, Unit 2	
JOB: 1300 INSLINGTON SUITE 103	Concord, ON L4K 3N5	

---

### Title

WC-1 & WC-2 flush valve R.1

---

### Description

Please refer to the suppliers comment below and confirm:

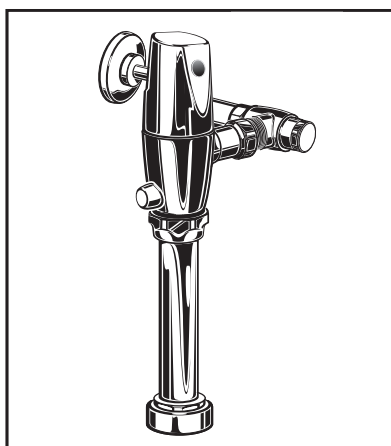
The chosen WC1 & WC2 fixture is Afwall TS Bowl so you can use Base Model TS FV # 606B121.002 (1.28 gpf) with Hard Wired AC adapter # PK01.HAC. I have attached the spec of both the FV and power pack separately. Alternatively you can also choose any of the flow rates (1.6 or 1.1 gpf based on site requirement, all flow rates are indicated on spec sheet).

---

### Package Items

# SELECTRONIC® SENSOR-OPERATED TOILET FLUSH VALVE

## HARD-WIRED AC POWER, BASE MODEL



### GENERAL DESCRIPTION:

Exposed, Sensor Operated Selectronic Water Closet Flush Valve for floor-mounted or wall-hung 1-1/2" top spud bowls. Inlet includes 1" I.P.S. angle stop with back-flow protection, vandal-resistant cap, sweat solder kit, cover tube and wall flange. Outlet includes 1-1/2" vacuum breaker, spud coupling and flange.

### PRODUCT FEATURES:

- **Self-Cleaning Piston** with integral wiper spring significantly reduces clogging and maintenance
- **No Routine Maintenance:** no diaphragms to replace; no filters to clean
- **Optional Cover Plate** for transformer installation from the front
- **Selectronic Proximity System** with universal sensor provides hygienic, "hands free" operation
- **State-of-the-Art Electronics** prevent ghost flushing
- **Dezincification Resistant** brass alloy
- **Fully Mechanical Manual Override Button** can flush the valve without power
- **Fail-Safe:** Valve automatically closes upon loss of power or water pressure and does not need to be reset
- **Adjustable Sanitary Flush** cleans the fixture & maintains the trap seal.
- **Chemical Resistant EPDM Seals** for extended life
- **High Back Pressure Vacuum Breaker**
- **Adjustable Tailpiece**
- **Range can be adjusted manually or with optional remote control**
- **No external volume adjustment**
- **Can be installed left or right handed**

### BASE MODEL: (Does Not Include Power Supply)

☐ **606B.161** Base Model, 1.6 gpf/6.0 Lpf  
For use with Hard-Wired AC or Multi-AC power kits. 11-1/2" rough-in



☐ **606B.121** Base Model, 1.28 gpf/4.8 Lpf  
**SAME AS ABOVE**



☐ **606B.111** Base Model, 1.1 gpf/4.2 Lpf  
**SAME AS ABOVE**



☐ **606B.761** Base Model, Dual Flush 1.6/1.1 gpf/6.0/4.2 Lpf  
**SAME AS ABOVE**



☐ **606B.721** Base Model, Dual Flush 1.28/1.1 gpf/4.8/4.2 Lpf  
**SAME AS ABOVE**

### POWER KITS: (Must be Purchased Separately)

☐ **PK00.HAC** Hard-Wired AC transformer, 10' extension cable and capacitor module

☐ **PK00.MAC** Multi-AC adapter and 10" extension cable

### OPTIONAL Battery Back-up

☐ **PK00.BBU** Allows faucet to continuously operate during a power failure

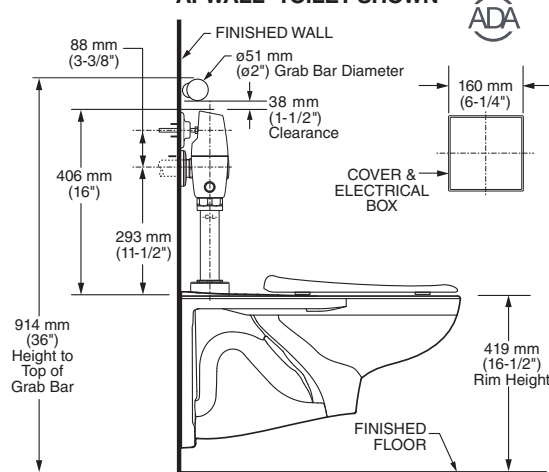
### OPERATING PRESSURE:

25 psi (flowing) - 80 psi (static)

### FLOW REQUIREMENT:

25 gpm/94.6 L/min

### ADA WATER CLOSET INSTALLATION: AFWALL® TOILET SHOWN



\*\* Flush Valve can be installed to meet ADA 2010 Section 609 when installed as shown

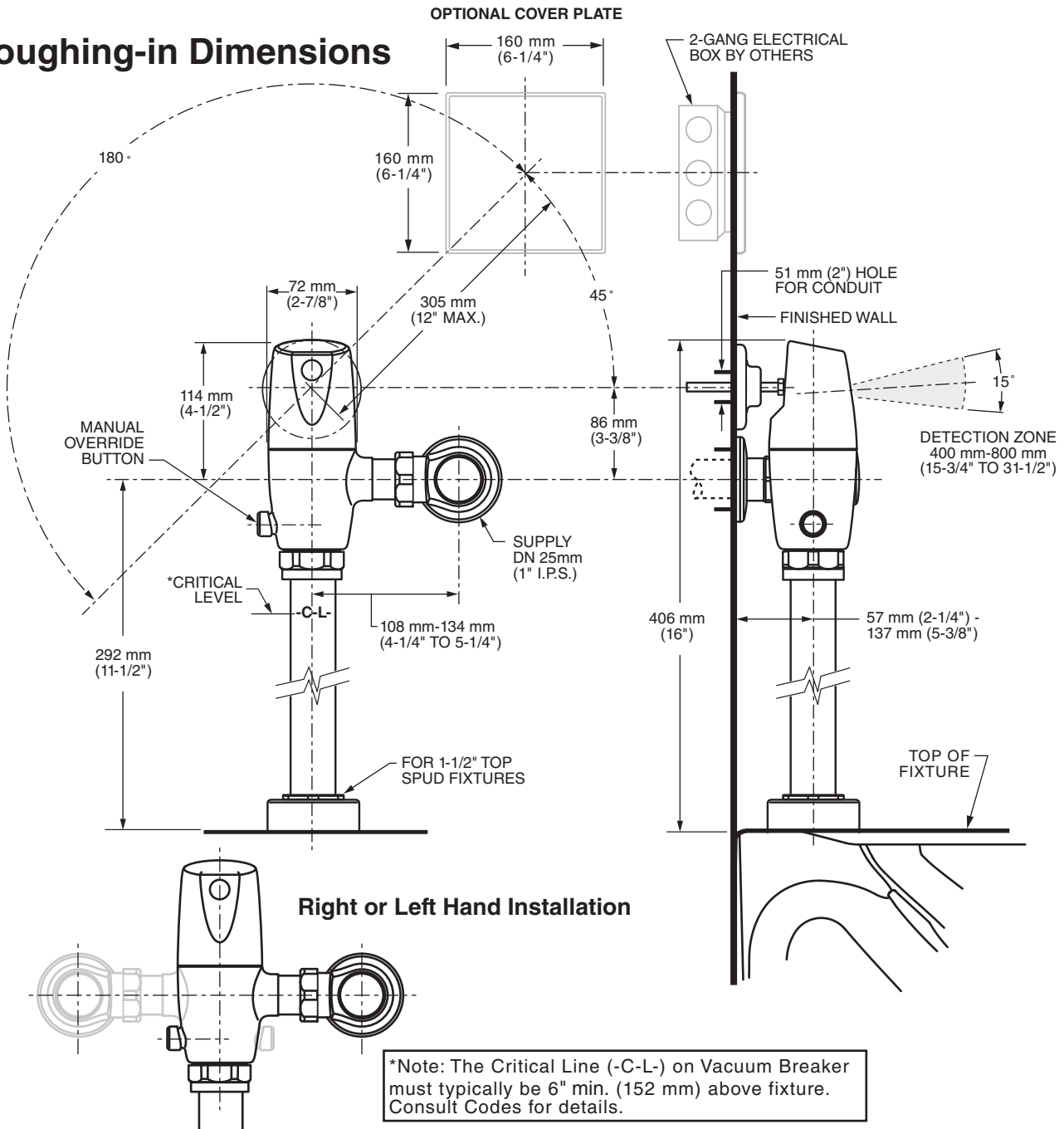
### RECOMMENDED SPECIFICATION:

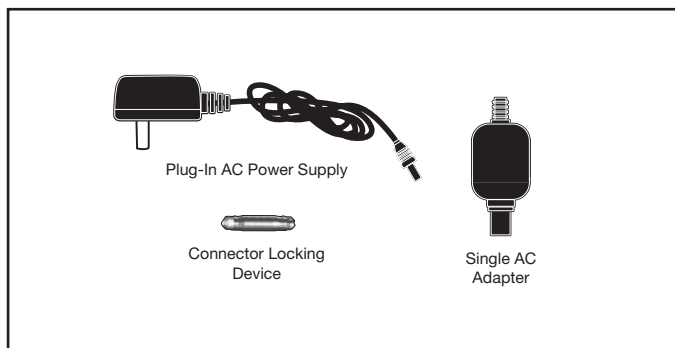
Electronic proximity infrared sensor activated toilet flush valve shall feature self-cleaning piston valve. Includes a fully mechanical manual over-ride that can provide a complete flush without power. Includes dezincification-resistant brass valve body and metal cover with chrome finish and vandal resistant stop cap. Angle stop with back-flow protection and vacuum breaker included. Flush valve shall be American Standard Model # 606B.\_\_\_\_.002

**LISTINGS:**

- ASSE 1037
- ANSI/ASME A112.19.2
- ADA Compliant

**Roughing-in Dimensions**

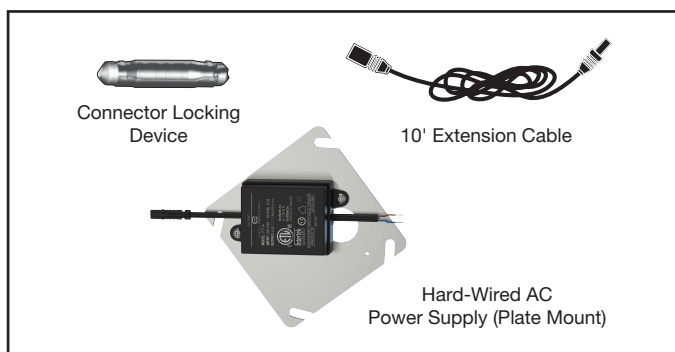




## MODEL NUMBER:

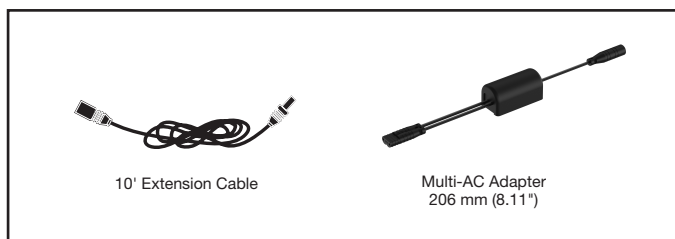
### ❑ PK00.PAC Plug-In AC Power Kit

Includes universal Plug-In AC power supply with 6' long power cord, single AC adapter and connector locking device.



### ❑ PK01.HAC Hard-Wired AC Power Kit

Includes Hard-Wired AC power supply (plate mount), 10' extension cable, and connector locking device.



### ❑ PK01.MAC Multi-AC Power Kit

Includes 10' extension cable and multi-AC adapter. One AC power supply can power up to 15 Selectronic faucets and/or flush valves at one time in a daisy chain configuration.

## FOR USE WITH SELECTRONIC BASE FAUCET & FLUSH VALVE MODELS

### FEATURES:

**Plug-In AC:** Class 2 UL certified universal Plug-In AC power supply with 6' long power cord.

**Input Voltage:** 100 - 240 VAC, 50 / 60 Hz. **Output Voltage:** 6VDC.

**Hard-Wired AC:** Class 2 UL certified Hard-Wired AC transformer (electrical box by others). Includes 10' extension cable to allow for remote installation of transformer. **Input Voltage:** 120-240 VAC, 50/60 Hz. **Output Voltage:** 6VDC.

**Multi-AC:** One AC transformer (plug-in or hard-wire) can power up to 15 faucets and/or flush valves in a daisy chain configuration. 10' maximum distance between units. **SEPARATE AC POWER KIT REQUIRED.**

**Fail-Safe:** Faucet and/or flush valve automatically shuts off upon loss of AC power. Prevents costly excess water usage and potential flooding.

**Connector Locking Device:** Secures connection of power supply to sensor. Prevents disconnection.

## ONE POWER KIT REQUIRED FOR EACH FAUCET AND FLUSH VALVE